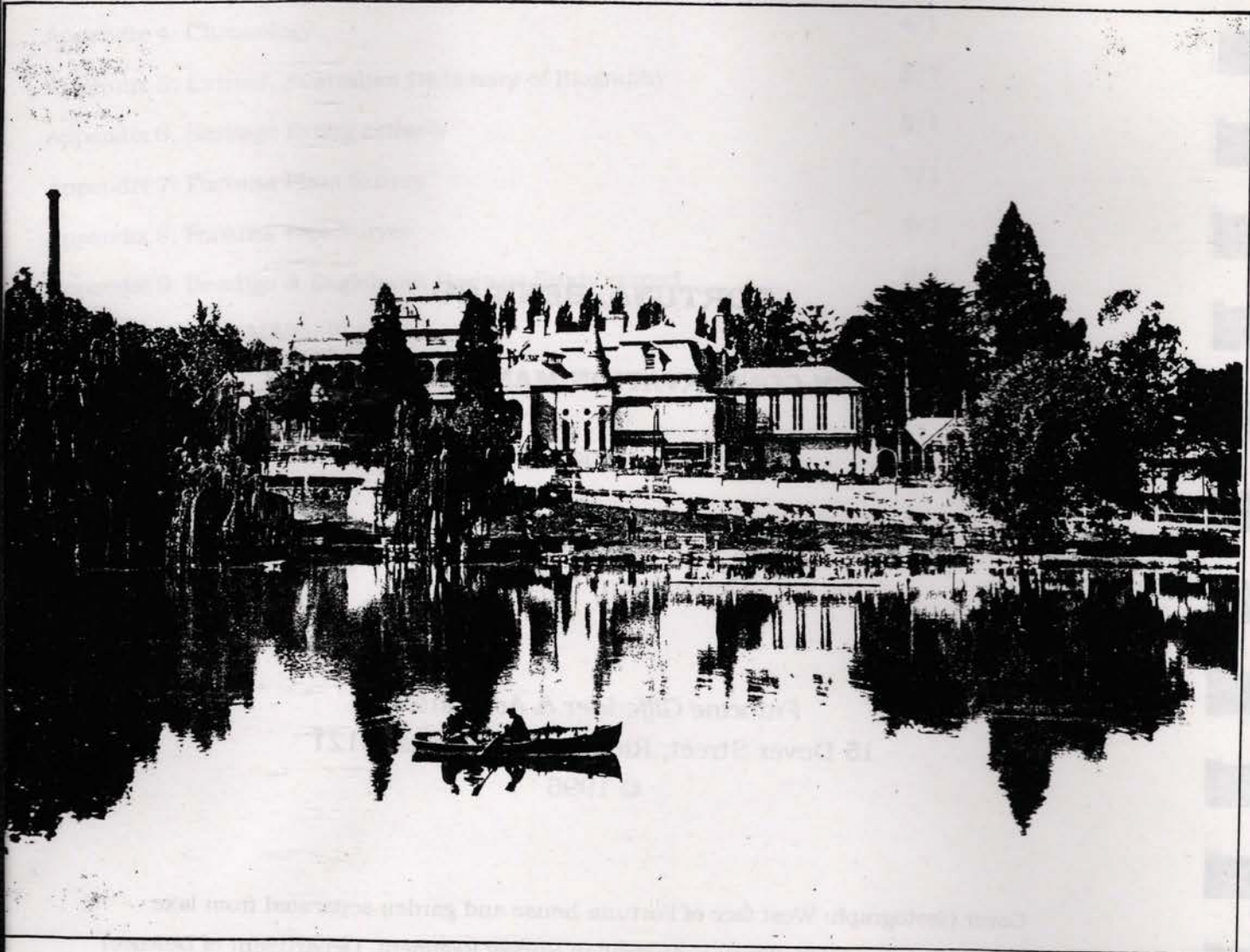


# FORTUNA, BENDIGO

## GARDEN CONSERVATION MANAGEMENT PLAN



***Francine Gilfedder & Associates***

**15 Dover Street**

**RICHMOND 3121**

**1996**

**FORTUNA, BENDIGO**  
**GARDEN CONSERVATION MANAGEMENT PLAN**

1996

for the  
Department of Defence

*Francine Gilfedder & Associates*  
15 Dover Street, Richmond, Victoria, 3121

© 1996

Cover photograph: West face of Fortuna house and garden separated from lake by the main drive, c.1908. (Source: Australian Survey Regiment, Department of Defence)

APPENDICES

Appendix 1: Study brief	1/1
Appendix 2: Australia ICOMOS 'Burra Charter'	2/1
Appendix 3: AHC criteria for assessment of significance	3/1
Appendix 4: Chronology	4/1
Appendix 5: Extract, Australian Dictionary of Biography	5/1
Appendix 6: Heritage listing extracts	6/1
Appendix 7: Fortuna Plant Survey	7/1
Appendix 8: Fortuna Tree Survey	8/1
Appendix 9: Bendigo & Eaglehawk Heritage Study extract	9/1

ILLUSTRATIONS, MAPS, PLANS

# FORTUNA GARDEN CONSERVATION PLAN

EXECUTIVE SUMMARY	page i
List of illustrations, maps, plans	C 3
1.0 INTRODUCTION	1
1.1 Background	1
1.2 Study area	1
1.3 Existing heritage status	1
1.4 Methodology	2
1.5 Terminology	3
1.6 Acknowledgements	5
2.0 GARDEN HISTORY	6
2.1 Introduction	6
2.2 Overview of the garden development	7
2.3 General history of the site	9
2.4 Development phases	13
2.5 Significant material and features	14
2.6 Summary	16
3.0 EXISTING SITE CONDITIONS	18
3.1 Introduction	18
3.2 General site conditions	18
3.3 Existing conditions survey	19
3.4 Architectural features	23
3.5 Plant survey	31
4.0 ANALYSIS OF EVIDENCE	32
4.1 Introduction	32
4.2 Criteria for assessment of significance	32
4.3 Garden elements of significance	33
4.4 Comparative analysis	35
5.0 STATEMENT OF SIGNIFICANCE	38
5.1 Discussion	38
5.2 Overview of significance	40
5.3 Statement of significance	40
6.0 MANAGEMENT CONSTRAINTS & OPPORTUNITIES	42
6.1 Constraints arising from the statement of significance	42
6.2 Statutory and non statutory requirements	42
6.3 User requirements	44
6.4 Physical constraints	45
7.0 CONSERVATION MANAGEMENT POLICY	46
7.1 General policy recommendations	46
7.2 Policies for components	47
8.0 IMPLEMENTATION	53
8.1 General development guidelines	53
8.2 Specific recommendations	53
8.3 Management recommendations	57
9.0 MANAGEMENT AND MAINTENANCE GUIDELINES	61
9.1 Introduction	61
9.2 Tree assessment, management and maintenance	61
9.3 Shrubberies	67
9.4 Roses	70
9.5 Lawn	70
9.6 Drive/paths	72
9.7 Structures	73
BIBLIOGRAPHY	74