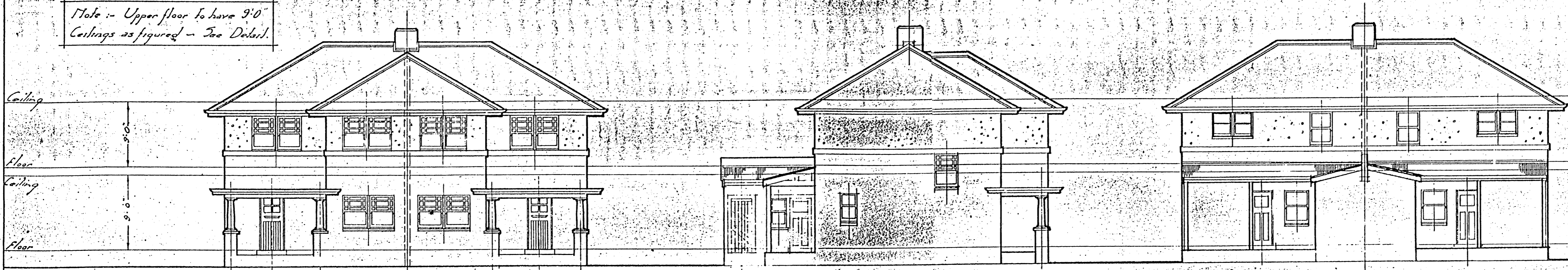


# STATE SAVINGS BANK OF VICTORIA - PROPOSED DWELLINGS, FISHERMANS BEND.

# TYPE 1

Note - Upper floor to have 9'0" Ceilings as figured - See Detail.

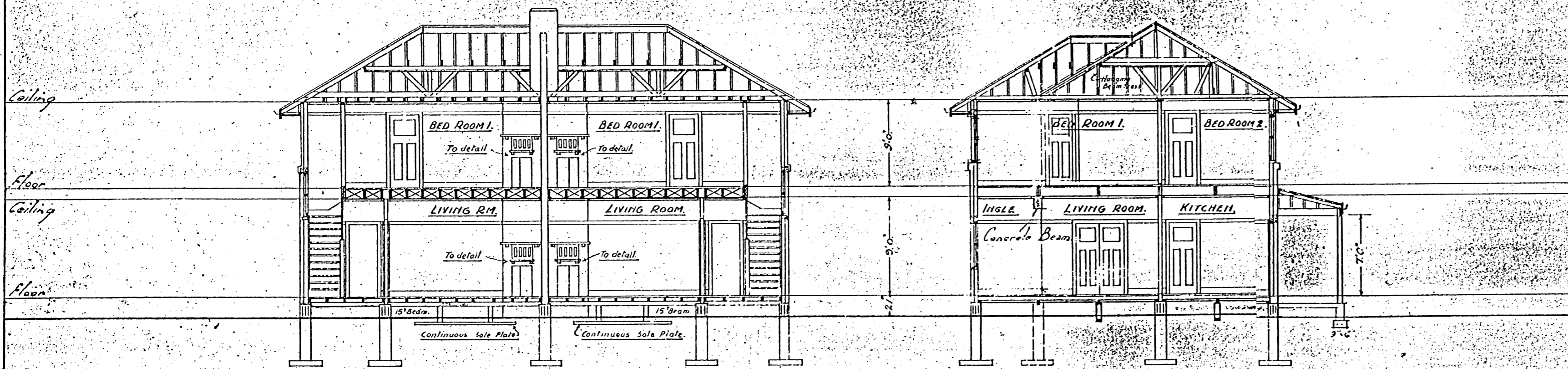


FRONT ELEVATION

SIDE ELEVATION

REAR ELEVATION

Note - For Barrel Drain see Specification



SECTION A-A

SECTION B-B

Note - For position of Piers see Foundation Plan

This is the plan referred to in a Contract dated 13<sup>th</sup> August 1937.

Contractor *W. H. Sturt*

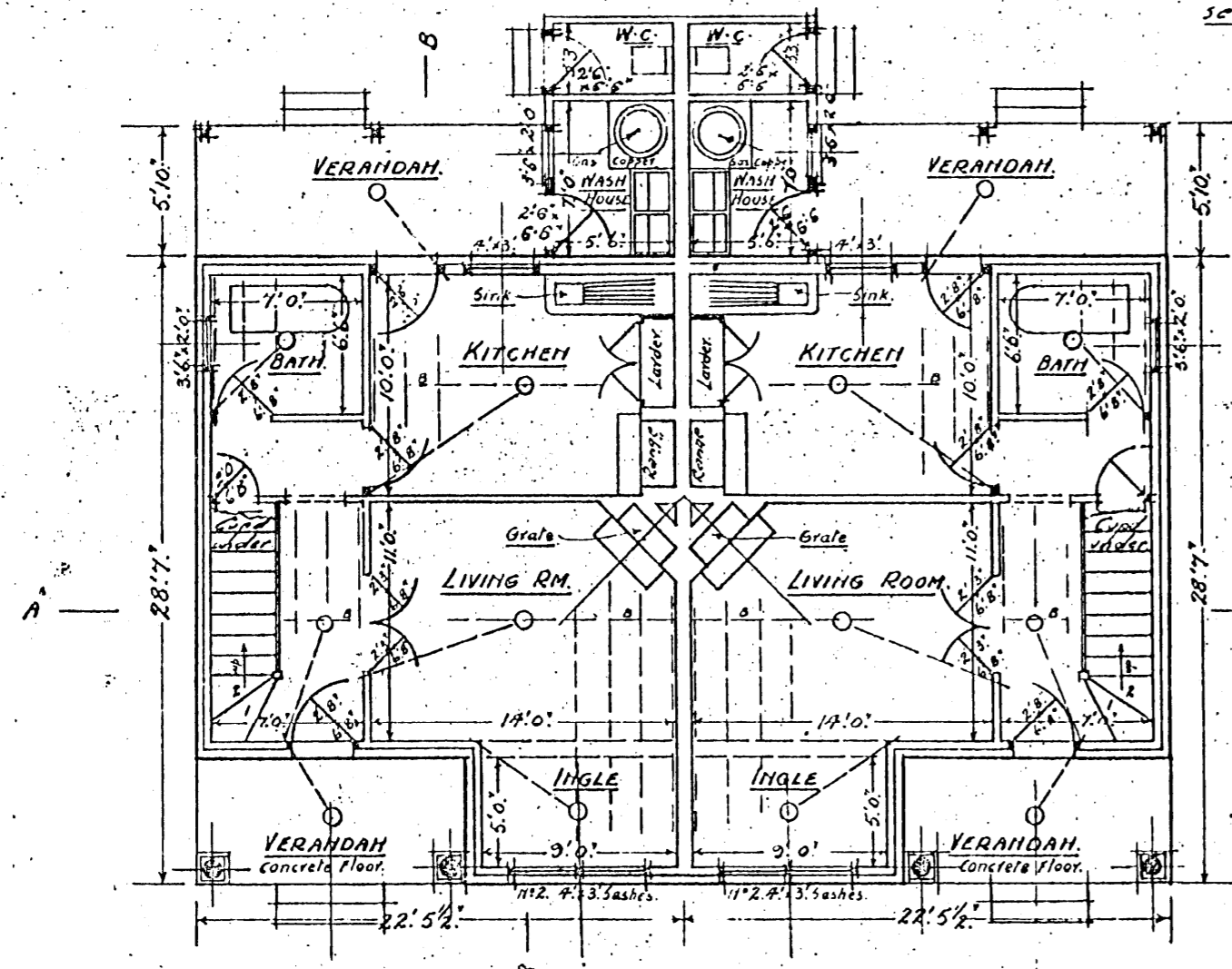
Witness *G. Burridge Leith*  
for and on behalf of the Commissioners of the State Savings Bank of

Victoria

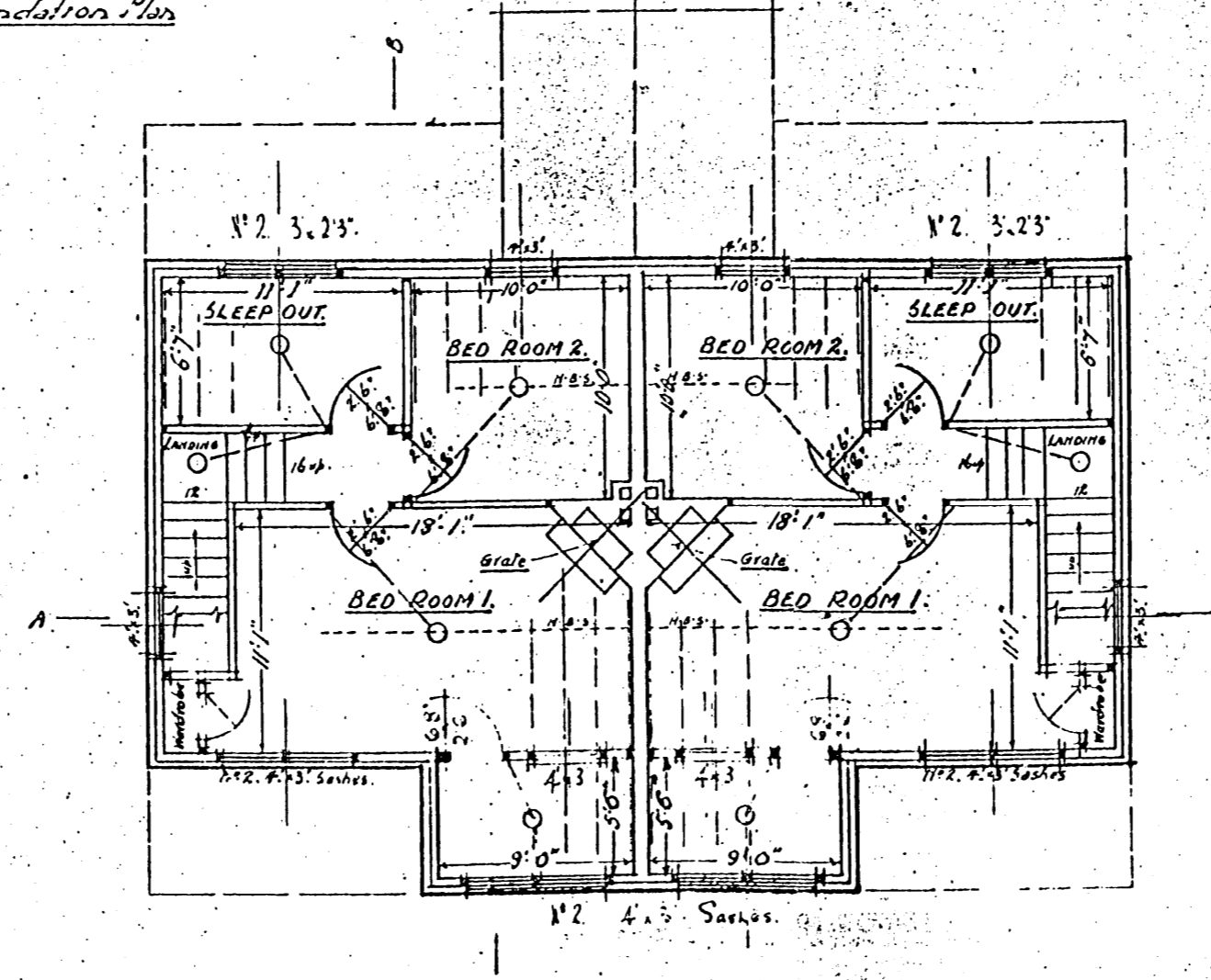
Witness

Note - Quantities of Fencing and Drainage hereunder Scheduled are to be taken as covering pair of Semi-Detached Houses.

- DRAINAGE**
- S.W. DRAIN 175' U.P.D. Combined
- SEWERAGE 150' S.P.D. Combined
- FENCING**
- CYCLONE 138' Round Galv.
- PALING 178' Duo.
- 1/2 COST ONLY 171'
- LEVELS**
- LEVELS SHOWN ARE APPROX ONLY
- CONTRACTORS TO INSPECT SITE

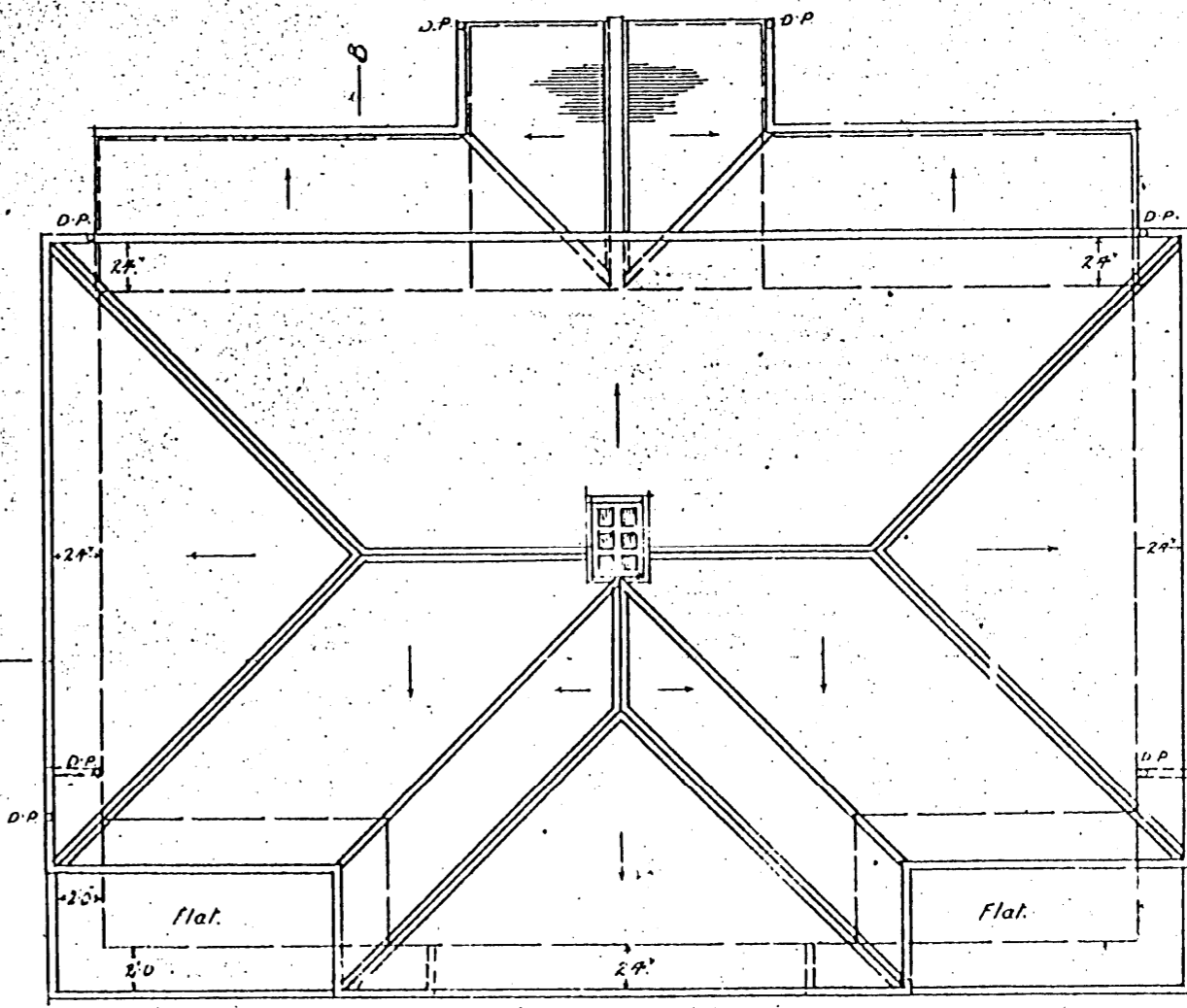


GROUND PLAN

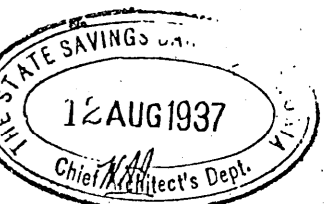
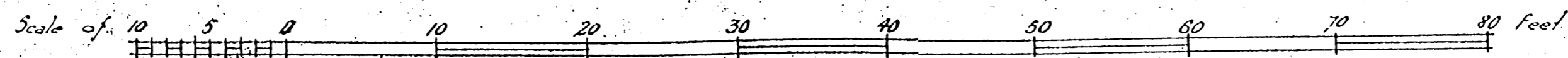


UPPER FLOOR PLAN

BLOCK PLAN - 1/40 INCH SCALE



ROOF PLAN



G. Burridge Leith ARCHT.  
Chief Architect.