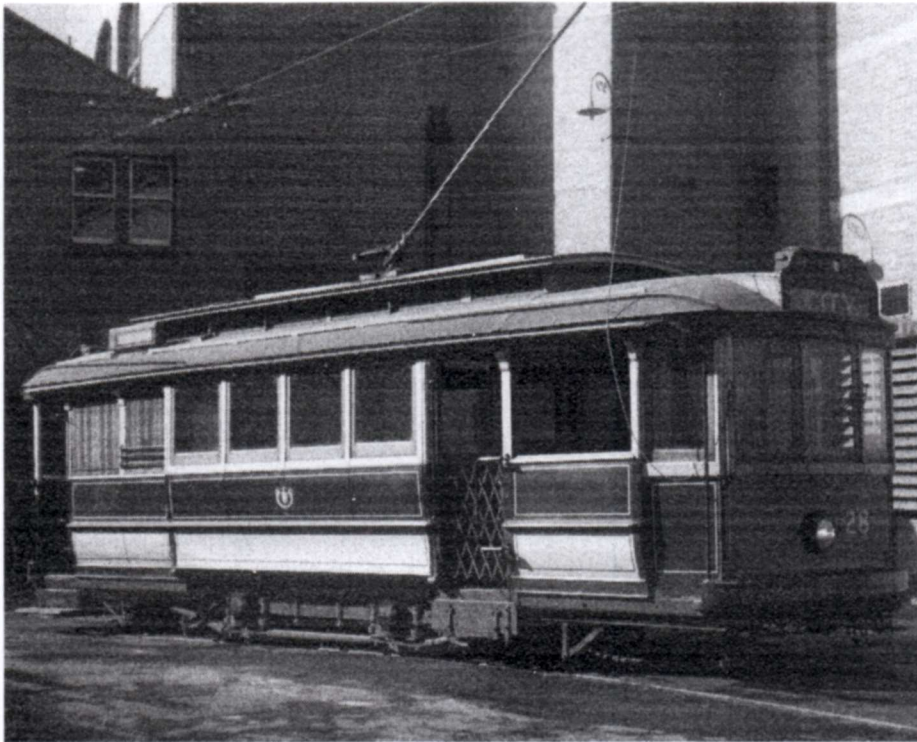

From: Cameron & Associates <office@cameronandassociates.com.au>
To: Warren Doubleday <warren.doubleday@btm.org.au>
Date: Sunday, April 9, 2023 1:01:52 PM
Subject: Scans of Geelong 28
Folder: Inbox/warren.doubleday@btm.org.au

Many thanks Warren. I have #426 and attach a better scan for you of 1930, a KK slide that Roger Greenwood - with KK's permission - shared when he was making his DVD. Also via KK, a blowup of the interior of one of the Pengelley cars for you to check out that maker's plate! I was wondering whether Bob Lilburn collected any of those D&F plates we found on Saturday from Butterbox cars. I didn't ever find two screw holes the right distance apart for them in no.2. It's possible D&F was gold leafed on above the saloon doors.

I had no idea that John Webster was the photographer of 4228-31. All 5 photos would have been taken on the same day (21/8/55), given the position of the trolley rope, side desto, weather and unusual road the tram was on. They must have asked for it to be run out specially and Keith, perfectionist that he was, took his photo showing the apron with the number on. The tram had had a prang according to Bob Lilburn in May on a rare run in service and by August they hadn't yet painted the repaired apron. What's interesting about that apron is that it had score marks for zebra striping that were never applied.

I unscrewed (but kept) the tow bar lugs from no 2. Maybe they should go back on.

Cheers
Warrington



On 9 Apr 2023, at 11:25 am, Warren Doubleday
<warren.doubleday@btm.org.au> wrote:

Warrington,

Our good photos of Geelong 28 attached.

I may have already sent these to you but just in case

8658

426 - KSK
1930 - KSK - needs a rescan
4228 - John Webster - ex Jack Richardson collection -
4229 - John Webster
4231 - John Webster

Warren

Saturday, April 8, 2023, 9:28:46 PM, you wrote:

That's the one. Bob gave me a 5x7" blowup but it's a lot fuzzier than your scan.
Many thanks
Warrington

On 8 Apr 2023, at 6:42 pm, Warren Doubleday
<warren.doubleday@btm.org.au> wrote:

Warrington

3200 dpi scan of the negative attached.

What's that device alongside the truck frame - some brake adjustment mechanism?

Was good to see you today.

--

Best regards,
Warren Doubleday
Collection Manager
Ballarat Tramway Museum
0418 315 321<Geelong 28 - 3200dpi scan.jpg>

--

Best regards,
Warren Doubleday
Manager Museum Services
Ballarat Tramway Museum
0418 315
321<btm426i.jpg><btm1930i.jpg><btm4228i.jpg><btm4229i.jpg><btm4231i.jpg>
