

The Operation of one-man fare-box trams, the use of tokens, the financial and statistical results of the Ballarat Tramways during the period 1909 to 1921 proved to be very enlightening. Researching old time-tables too, is a fruitful and rewarding pastime; and so it was with two official Ballarat Time-Tables issued by The Electric Supply Company of Victoria, for the periods:—

October 1st., 1914 to 30th. April 1915 (presumably the "Summer table") and, May 1st., 1915 to 30th., September, 1915 (Winter Table)

The delightful prose of the featured advertisements is to be admired amid today's trend towards jargon....to illustrate:—

"Mrs Busfield
(Late Town Mission Laundry)
Victoria Street (next A. Levy & Co.),
BALLARAT EAST

Mrs. Busfield desires to notify the clients of the Town Mission, Victoria-street, that she has purchased the business, and solicits a continuance of the favors hitherto extended to the Laundry.

The quality of the work and the care bestowed upon each parcel, no matter how small, are guaranteed by the fact that present staff is being retained.

Latest machinery installed driven by electricity.

(Under new management)".

At 211 Sturt Street, J.G. Tucker, Proprietor, advertises - "Irvines Champion Prize Wines at 3d. and 6d. a glass; also Champagne at 6d. per glass". It makes one wonder what the price of a nip of Scotch would be!

However, let us turn our attention to the main topics in hand, namely the tramway and some of its prominent details....

TIME-TABLE

The Electric Supply Co. felt, that, "with the issue of the Tramway Time-table in its present form, they were supplying a long-felt want.

"Visitors will find within its pages a very complete Time-table,

Stop! All Trams Stop!
AT
Southern Cross Hotel
STURT STREET, opp. Hospital
S. A. BRABNER, Proprietor

Every Comfort and Convenience
Tariff Moderate. Hot and Cold Baths.
First-Class Billiard Table.

NEAR LAKE WENDOUREE

and all the information that is necessary to enable them to travel freely and comfortably from place to place.

"The Places of Interest notified on a Special page should be read with pleasure, as all the important points on each route are drawn attention to. There are also many pleasant spots that will come under the notice of visitors as the natural and artificial beauties of Ballarat expand themselves to them. One of the chief features is the altitude of the City, which gives, under ordinary conditions, a temperature in the summer months that is incomparable with any other place in the State. One can live in comfort in Ballarat, whilst their less fortunate citizens who cannot avail themselves of a week-end trip are suffering the discomforts of the metropolis and other cities less advantageously placed. In addition to this you have the attractions of a beautiful City wherein, and in the vicinity, can be found many avenues of pleasure, the whole assisting to make the title of "Queen of Inland Cities", which Ballarat holds, well and deservedly earned.

"The Tramway System commands the entire City and environs, and is run on up-to-date lines, giving every facility for the rapid transit of visitors to the many places of attraction.

"Visitors are welcomed at all times by the officials at the Traffic Office at the Terminus at Grenville Street, where all information can be obtained, and at which place is displayed in the outside waiting room a large diagram showing plainly the various Tramway routes.

<u>Rubicon Street</u>	<u>(Weekdays)</u>	<u>Sebastopol</u>
Daylight Disc - Blue,		Daylight Disc - Blue with White centre
Night Light - Blue.		Night Light - Blue, illuminated "S" on canopy.
Grenville Street to Sebastopol.		4d.
Grenville Street to Sebastopol (Bridge Street).		3 $\frac{1}{2}$ d., Children, 2d.
Grenville Street to Rubicon Street.	3d. Cash, 2d. by Token, Children, 1d.	
Grenville Street to Drummond Street.	2d. Cash, 1 $\frac{1}{2}$ d. by Token, Children, 1d.	
Rubicon Street to Sebastopol.	2d. Cash or Token, Children, 1d.	
Rubicon Street to Sebastopol (Bridge Street).	1 $\frac{1}{2}$ d. Cash or Token, Children, 1d.	
Bridge Street to Sebastopol.	1d. Cash, Children, 1d.	
Sebastopol to City, up to tram leaving Sebastopol at 8.34 a.m., and from Grenville Street at 8.28 a.m., available day of issue.	4d. Return.	

(Sundays, Public Holidays and Railway Picnic Days)
Same as on Week-days, excepting that no 2d. Tokens are available. 3d. Cash only to Rubicon Street, and Children are 2d. Cash to any point beyond Hospital Corner.

NOTE:- Between Rubicon Street and Sebastopol all cars run on the Fare Box system. Drivers supply passengers as they get on car with a Fare to collect docket, which must be presented to the Conductor when collecting the amount of Fare. Fares between Sebastopol and Rubicon Street only must be placed in the Fare Box.

TOKENS AND FARE BOX ROUTES:-

Lydiard Street, Drummond Street North, Orphanage, and Mount Pleasant Routes are run entirely on the Fare Box system.

Fares must be paid as follows:-

<u>Going towards the City</u>	<u>On entering the tram</u>
<u>Going from the City</u>	<u>On leaving the tram</u>
<u>Lydiard Street North (Weekdays)</u>	
Daylight Disc - Amber; Night Light - Amber.	
Grenville Street to Gregory Street.	3d. Cash, 2d. by Token, Children 1d.
Grenville Street to Macarthur Street.	2d. Cash, 1 $\frac{1}{2}$ d. by Token, Children 1d.
Railway Station to Gregory Street.	2d. Cash, 1 $\frac{1}{2}$ d. by Token, Children 1d.
(Sundays, Public Holidays and Railway Picnic Days)	
Any portion of route.	2d. Cash or Token, Children 1d.

<u>Orphanage (Weekdays and Sundays)</u>	
Daylight Disc - Green; Night Light - Green	
Grenville Street to Orphanage.	3d. Cash, 2d. by Token, Children 1d.
Grenville Street to Queen Street.	2d. Cash, 1 $\frac{1}{2}$ d. by Token, Children 1d.
Princess Street to Orphanage.	2d. Cash, 1 $\frac{1}{2}$ d. by Token, Children 1d.

<u>Mount Pleasant (Weekdays and Sundays)</u>	
Daylight Disc - Red; Night Light - Red.	
Grenville Street to Mount Pleasant.	3d. Cash, 2d. by Token, Children 1d.
Grenville Street to Grant Street.	2d. Cash, 1 $\frac{1}{2}$ d. by Token, Children 1d.
Eastwood Street to Mount Pleasant.	2d. Cash, 1 $\frac{1}{2}$ d. by Token, Children 1d.

<u>Drummond Street North (Weekdays and Sundays)</u>	
Daylight Disc - White; Night Light - White	
Grenville Street to Wendouree Parade.	3d. Cash, 2d. by Token, Children 1d.
Grenville Street to Drummond Street.	2d. Cash, 1 $\frac{1}{2}$ d. by Token, Children 1d.

Tokens are not available on Orphanage, Mount Pleasant or Drummond Street North routes on Public Holidays or Railway Picnic Days.

FARE BOX OPERATION *This section could be left out*

FARE BOX DRIVERS are given so many shillings worth according to the requirements of the time they are on and the cash received for the sale of the unsold are returned through the receiving clerk on the daily Cash Sheet. They are then reconciled in book provided for the purpose.

The tokens in the Fare Boxes are brought into the reconciliation book.

CONDUCTORS are given a permanent stock of twelve shillings worth of green (2d.), and five shillings worth of pink (1 $\frac{1}{2}$ d.); and each day they either return to the office the surplus or obtain a refund, that is after keeping back their stock or as much of it as the tokens in hand at the close of their shift will do.

Tokens are made up in metal tubes holding twelve shillings' green and five shillings' pink, and are measured into the tubes by a machine designed for the purpose.

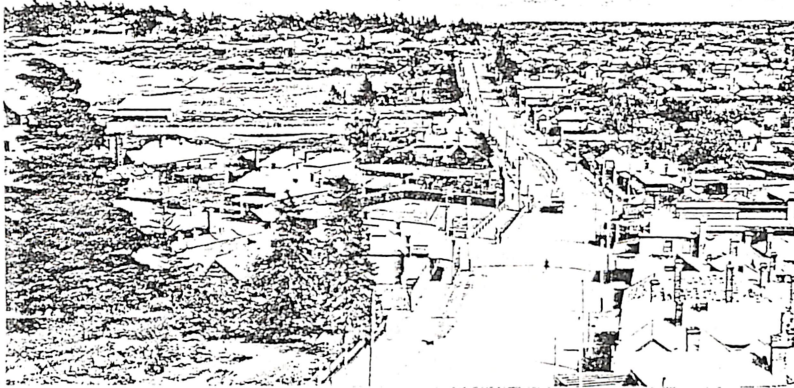
Keat in 1913 at:-

Twenty six shillings per 1000	
25% duty	7.2 " "
Shipping and	
Wharf charges	5d. " "
	<u>33.7</u>

In 1919, the cost was 60/-, or made of Crystalate, 42/- per 1,000,000. A local quote for Haxite was 17/- per 1,000 plus £25 for die. By 1919, the number of tokens in circulation was:-

160,000 @ 5 for 1/-; 120,000 @ 7 for 1/-; plus those not redeemed =
42,000 @ 5 for 1/-; 24,000 @ 7 for 1/-.

Covering a period of 10 $\frac{3}{4}$ years...50% on sales, or an average of £50 P.A. in fares value.



LEFT: Panorama at Ballarat East. Note passing loop at rear of car; it is situated in Barkly Street, between Main Road and Young Street.

Issue Of Tokens:--

Route	2d. Token	1 $\frac{1}{2}$ d. Token	Not Available
<u>Gardens via Convent</u>	Grenville St to Alfred St. Pleasant St to Gardens.	Grenville St to Drummond St. Alfred St to Gardens.	Not available Sundays, Public Holidays, Railway Picnic Day or Special Cars.
<u>Gardens via Ripon St.</u>	Grenville St to Macarthur St. Macarthur St to Gardens.	Grenville St to Drummond St. Forest St to Gardens.	Not available Sundays, Public Holidays, Railway Picnic Day or Special Cars.
<u>Sebastopol</u>	Rubicon St to Sebastopol.	Rubicon St to Bridge St Sebastopol.	Available every day.
<u>Rubicon St.</u>	Grenville St to Rubicon St.	Grenville St to Drummond St.	2d. Tokens are not available on Sundays, Public Holidays, Railway Picnic Day or Special Cars. 1 $\frac{1}{2}$ d. Tokens ARE available on Sundays but are not so on days as above.
<u>Lydiard St.</u>	Grenville St to Gregory St.	Grenville St to Macarthur St. Railway Station to Gregory St.	2d. Tokens are available on Sundays and Holidays but 1 $\frac{1}{2}$ d. Tokens are not available.
<u>Orphanage.</u>	Grenville St to Orphanage.	Grenville St to Queen St. Princess St. to Orphanage.	Not available on Public Holidays, Railway Picnic Day or Special Cars.
<u>Mt. Pleasant.</u>	Grenville St to Mt. Pleasant.	Grenville St to Grant St. Eastwood St to Mt. Pleasant.	Not available on Public Holidays, Railway Picnic Day or Special Cars.