

NEWTON, McLAREN

LIMITED.

Electrical Engineers, Importers,
WHOLESALE & RETAIL SUPPLIERS.

Contractors to Commonwealth and S.A. Governments, &c., &c. Absolutely the Largest Stock of
Electrical Goods in South Australia. Estimates and advice Free.

Lighting, Ventilation, and Power Plants a Specialty.

Warehouse and Offices: LEIGH STREET.

'Phone 1158, Central.

A NEW WAREHOUSE.

Harrold, Colton, & Co., Ltd.,

General Hardware Merchants and Leather Goods Manufacturers.

The new warehouse erected for Messrs. Harrold, Colton, & Co. in Currie-street, on the site of the firm's premises which were destroyed by fire about a year ago, forms one of the most spacious and elaborately fitted-out establishments of the kind in the State. There is a frontage of 94 feet to Currie-street, and the land has a depth of 212 feet, with a frontage to Topham-street extending the whole of that distance. It is a three-storey structure throughout, and a feature of the furnishing is the Wunderlich steel ceiling, which has been fixed on every flat, including the basement. Of the Currie-street frontage 72 feet of the space is devoted to show windows and the main entrance, the balance of the 94 feet being set apart as a covered trolly way, by which vehicles enter the premises, the exit being in Topham-street, so that all loading and unloading is done under cover within the walls. There are two goods lifts, by which the stock brought in from outside is carried to the floor where it is required, small trollies being employed then to convey the things to the different departments. The elevations to both Currie and Topham streets have been treated simply in pointed red brick, with appropriate dressings in cement, surmounted by a handsome cornice. There is nothing elaborate in the character of the architecture, more attention having been paid to the internal arrangements than to external appearances. Provision has been made for carrying the building a storey higher if the firm find that they have not enough room in the present building, but it is not intended to make the additions until such a course is found to be absolutely imperative, as the space at present available is much greater than was provided in the old

building. The possibility of another fire occurring has been rendered exceedingly remote by the installation of the Morris sprinklers throughout the whole of the building from the basement to the roof, and also in the storerooms at the back, which were not damaged by the fire last year. The sprinklers are within a few feet of one another, and were tested before being installed, so that it would be impossible for a fire

Peters & Nichols the painters. The large verandah, like the various departments, has a ceiling of Wunderlich material, and a fine pavement of granolith has been laid by Messrs. Dwyer and Lennon.

Messrs. Harrold, Colton, & Co. have finished stocking the place, and they are making most attractive displays in the various departments. The front por-

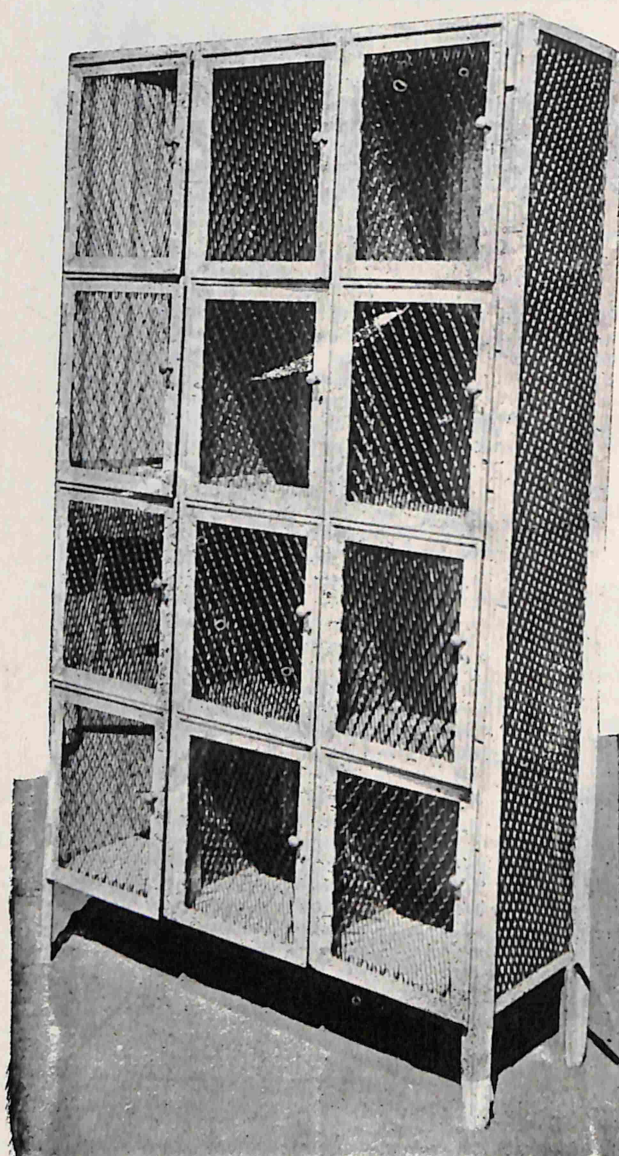
Messrs. Slater & Co. Further south is the apartment in which the Wunderlich material and builders' ironmongery stocks are located, and beyond this section is the passage way where the vehicles load the ordered stores, one side being used for country orders and the other for those for delivery in the city. The whole of the ground floor is occupied by these departments. Paints and other heavy goods are accommodated in the basement. On the second and third floors there is a vast variety of articles such as one might expect to see in an establishment of the kind. Messrs. Harrold, Colton, & Co. have introduced an innovation which will be much appreciated by persons who have occasion to visit the premises to make wholesale purchases. Nearly all of the main frontage of the second floor has been arranged as a sample room, in which a specimen of nearly every line stocked in the warehouse is exhibited, carefully numbered and priced, so that when customers wish to give orders they are not compelled to wander upstairs and downstairs for the purpose of making selections at the departments. In the sample-room everything is before them on tables or stands, and all they have to do is to point out which articles they wish to have included in their order. There are, of course, some large and heavy goods which are not represented in the sample-room but the average customer who wishes to stock a shop need not go outside of the room to see everything he needs—and more. From the basement floor to the highest ceiling the establishment is stocked with thousands of varieties of articles representing every branch of the hardware trade, and the firm are making a display which is in keeping with the splendid building they have erected.



MESSRS. HARROLD, COLTON, & CO.'S NEW WAREHOUSE.

to make any headway. The water pressure is obtained from the city mains through a 6-inch pipe, supplemented by the force from a large storage tank high up above the building. The architects were Messrs. Davies & Rutt, and the builder was Mr. W. Essery. Messrs. Sutherlands & Storey were the masons, Mr. A. Martin the plumber, and Messrs.

tion of the ground floor is set apart for the stocks of plated ware, cutlery, and guns, and ammunition, and behind these the offices are situated, the entrance being in Topham-street. In the centre of the front showroom there is an electric lift to carry customers to the different floors, this and the two goods elevators having been fitted by



WORKMEN'S LOCKERS
For Railways, Tramways, Factories, and
Institutions.

A. SIMPSON & SON LTD.

(ESTABLISHED 1855)

Gawler Place,
Grenfell Street,
Pirie Street, and
Wakefield Street,

ADELAIDE, S.A.

Hardware Manufacturers.

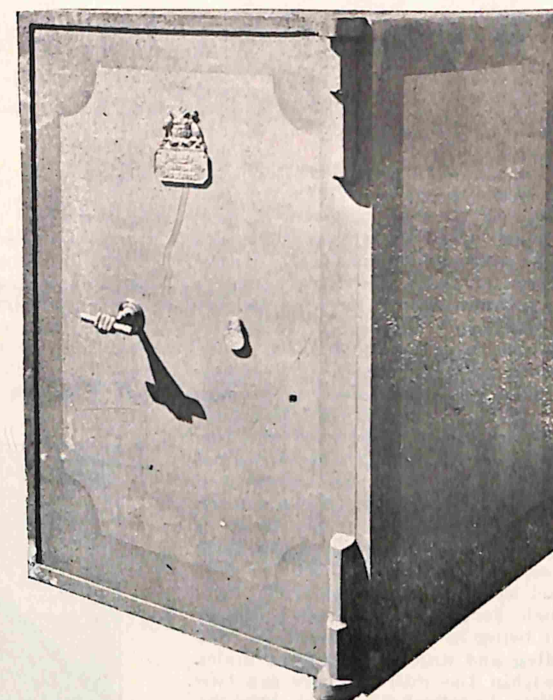
TRAMWAY SPECIALITIES—

Destination Boxes, Folding Car Gates, Brass
Window Guards, Rail Cleaning Shovels,
Skylights and Sash Bars, Safes and Doors
(fitted with our Patent Explosive-Diverting Lock)
Sand Boxes.



Samples of our Enamelled Signs supplied to the
Adelaide Municipal Tramways Trust, and as used
throughout the Commonwealth and New Zealand,

An ENAMELLED SIGN is the best class of
advertisement for use on Electric Cars,
EASY TO KEEP CLEAN, AND LASTING,



THE ADELAIDE STEAM TUG COMPANY, LIMITED.
McLaren Chambers, Port Adelaide,

26th January, 1907.

Messrs. A. Simpson & Son,
Gawler-place, Adelaide.

Dears Sirs—

Early on the morning of the 2nd inst. our office was entered
by burglars, who, we are glad to state, made an unsuccessful
attempt to open the strong-room door.

Through your patent explosive-diverting lock, the force of
the high explosive, which was apparently dynamite, was com-
paratively harmlessly expended instead of shattering the lock
to pieces.

Had an ordinary lock been used, only the merest chance
could have saved it from such injury as would have made
the opening of the door an easy task.

Expressing our gratification at the result,

We are, dear Sirs, yours faithfully,

(Signed) THOS. E. CREER,

Secretary and Manager.

A REVIEW equally as interesting perhaps as that of the introduction of the old tramway system and its eventual electrification would be that of the history of Australasia's Greatest Hardware Business, conducted by Geo. P. Harris, Scarfe & Co., Ltd. A few notes from a recent interview by one of our representatives will prove interesting.

"It has always been our aim, right from the start, to supply any line for which there is a demand. Electroplated Ware and Fancy Goods, Fireside Furnishings Kitchen Utensils, Lampware, Gas Fittings, Garden Implements, Sewing Machines, Bedsteads, Icechests Laundry Requisites, Saddlery, Painters and Artists' Materials, Guns and Rifles, Sports Outfits, Machinery, Stoves, Ranges, Mantels and all Builders Requirements, Tools, &c., &c. In fact, 'anything from a Needle to an Anchor,' expresses best the wideness of our source of supply."

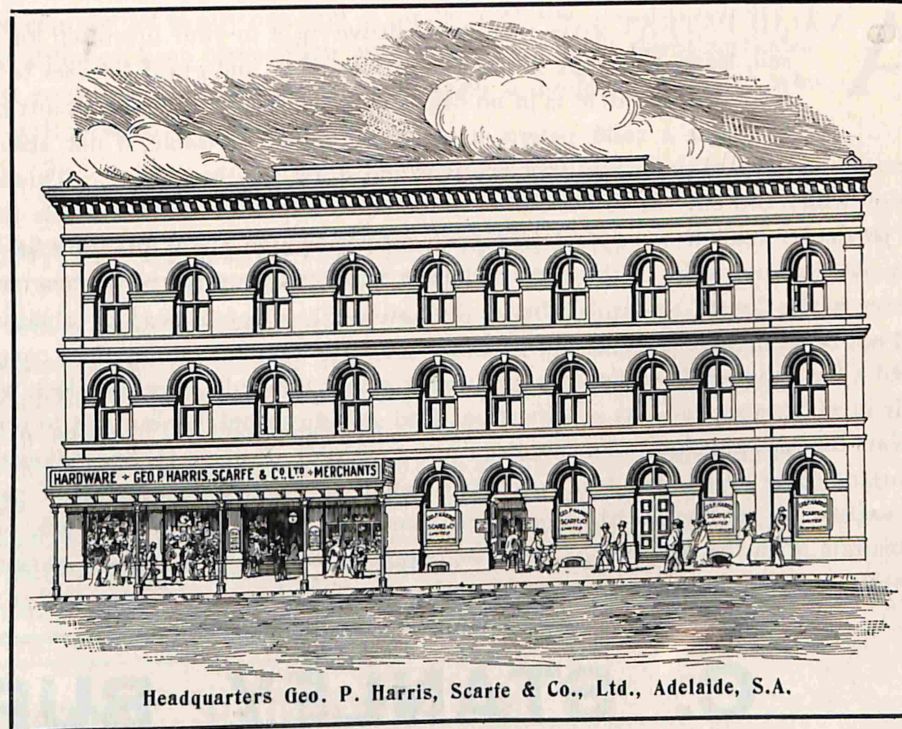
"What an exceptional display you have in your Electroplate and Fancy Department just now," remarked our representative, "and how evident it is that you attend to

the wishes of the customer with a trifling order just with the same civility and attentiveness as you would extend in the case of a large contract involving perhaps thousands of pounds."

"Yes, you have struck the keynote of our endeavor in that last remark, and referring to the display, your impression certainly seems to be in our favor."

Our representative says that Geo. P. Harris, Scarfe and Co.'s showing of Electroplate is equal in every detail to any he has seen, and certainly far away ahead of the average. It combines such a wealth of taste, such variety, quality and utility that when you have cause to make a presentation purchase, or require additional articles for table use, you ought, without fail, to visit Australia's great "Home of Hardware."

Though Headquarters are in Adelaide, branches of extensive dimensions are also to be found at Port Adelaide; Fremantle, Perth and Kalgoorlie, W.A.; and Broken Hill, New South Wales.



Headquarters Geo. P. Harris, Scarfe & Co., Ltd., Adelaide, S.A.

PATENTS.

THE WEALTH OF NATIONS.

Letters Patent for
Inventions obtained

Trade Marks, Designs,
and
Copyrights Registered

Searches made as to
Prior Publication of
Inventions.

Specifications and
Drawings Prepared.

Opposition to
Applications conducted.

Licenses Arranged and
Royalties Collected.

Agreements and Assign-
ments Drawn, and
the Registration of
Title obtained.

Cases Prepared for
Counsel and evidence
secured for Patent
and Trade Mark Law
Suits.

Opinions given as to the
validity of Patents,
on Infringement of
Patents and Trade
Marks, and concern-
ing the Laws.

Payment of Renewal
Fees effected
and all business generally
undertaken under the Pa-
tents, Designs, Trade Marks
and Copyright Acts
THROUGHOUT THE WORLD

A VALID PATENT gives you an exclusive right to your invention for a term of fourteen years. You can sell, lease, mortgage it, assign portions of it, and grant licenses to manufacture under it. The value of a successful patent is in no degree commensurate with the almost nominal cost of securing it. In order to obtain a valid patent, it is in every way advisable, if not absolutely necessary, to employ a Patent Attorney to prepare the patent specifications and draw up the claims. This is a special branch of the legal profession which can only be successfully conducted by experts. Most reliable inventors are naturally well versed in the particular branch of science or manufacture to which their attention has been specially directed; but unless they possess knowledge of the kind a Patent Attorney acquires by a close study of the treatment which patents receive in the Courts, the probability is that although a patent may be obtained, legal protection for the invention will not be secured. It is not infrequently the case that inventors, after congratulating themselves upon having saved a few guineas, have found to their sorrow that not only have they lost what money they had expended, but their inventions as well, the specifications filed serving to publish but not to protect the latter:—it is only the bad patents that are attacked. For nineteen years with Mr. Francis H. Snow (fourteen as Manager of his Patent Department) and three years since I have acted as Patent Attorney for thousands of patentees in all parts of the world, and my experience enables me to prepare and prosecute Patent and Trade Mark cases at a minimum of expense, commensurate with the services. I shall be happy to consult with you in person or by letter as to the probability of protecting or patenting any idea or invention you may have or be interested in.

C. STANLEY BURGESS

(Successor to FRANCIS H. SNOW)

PATENT ATTORNEY,

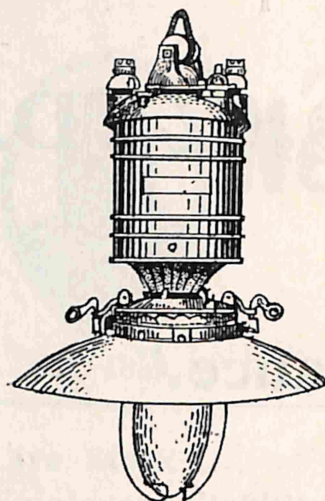
Fel. Aust. Inst. P.A. F.M. Char. Inst. P.A. (Engd.). N.R. Mem. Pat. Law Assn., Washington (U.S.A.)

Head Office - - 89, King William Street, ADELAIDE.

Next the Bank of Adelaide.

Pamphlet post free on application.

LIGHTING OF BUILDINGS.



Western Electric Arc Lamp

MESSRS. UNBEHAUN & JOHNSTONE were the successful tenderers for electrically lighting the whole of the Trust's buildings at Hackney and No. 1 Converter Station. The interior lighting will principally be by means of incandescent lights of an efficient design, and the exterior lighting will be carried out by means of the well known pattern of Western Electric Enclosed Type Arc Lamps, which will burn in sets of five across a pressure of 500 to 600 volts. This is by far the largest electric lighting installation contract let to any one firm in South Australia, and it is pleasing to note that although keen competition was brought in from the other States, the Trust eventually accepted Messrs. Unbehaun & Johnstone's tender, who are now well forward with their contract.

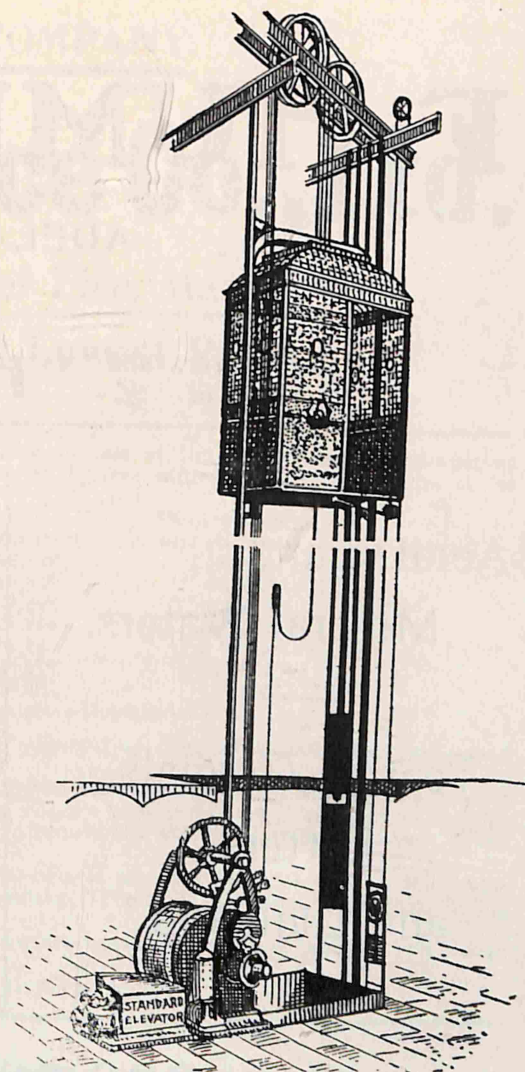
INTERNAL TELEPHONE SYSTEM.

The Internal Telephone System, for which Messrs. Unbehaun & Johnstone are the contractors, is the Central Battery System. This is the most approved method of up-to-date telephonic intercommunication, and we believe it is the first installation of the kind which is used for intercommunication between different branches of a large works in Australia. We might mention, by the way, that Messrs. Unbehaun and Johnstone were the first to show this system of telephones in Australia at the Chamber of Manufactures Exhibition, nearly ten years ago. Of course, great improvements have been made since that time and the Government Telephone Departments in Melbourne, Sydney, Hobart, Brisbane, and Adelaide have all since adopted the Common Battery System. Messrs. Unbehaun & Johnstone's principals in this matter are the Western Electric Company, whose name is always quoted as standard practice in connection with telephone apparatus.

✧ ELECTRIC ELEVATOR. ✧

Messrs. Unbehaun & Johnstone were the successful tenderers for the Full Automatic Press Button Control Electric Elevator which is to be installed in the Administrative Buildings, at Hackney. This elevator is to be complete with metal screens and car, and the whole apparatus is of such a character as to cost a minimum amount for maintenance. This elevator can be operated both from the car and hallways, obviating the necessity of an attendant. By pressing a button, placed in the hallway, the lift can be brought to that floor, stopping automatically when opposite the landing. Inside the lift car are placed a series of buttons, numbered to correspond with the various floors; by pressing one of these, the passenger can send the lift car to any desired landing, or by pressing a safety button can stop the car at any point in its travel. While the elevator is in motion, the passenger in the car has entire control. This machine is practically fool-proof, and is manufactured by the Otis Co., who are world-famous for their elevators. The modern electric elevator has made the sky-scraper buildings possible, and it is in the midst of the highest buildings in New York that the Otis Elevator Co. has grown to be the largest elevator manufacturing concern that the world at present knows.

GENERAL—We might mention that Messrs. Unbehaun & Johnstone are the only purely local firm who obtained electrical contracts for the supply and erection of apparatus for the Tramways Trust. This is of great credit to this firm, both partners of which are natives of South Australia.



Standard Otis Electric Elevator:

F. HUMPHRIS & SONS, LTD.

ADELAIDE, JAMESTOWN, and BROKEN HILL.

Manufacturers and
Exporters of ✧

“Humphris Famous Tomato Sauce.”

Aerated and
Mineral Waters.

—
Tonics, Cordials,
Bitters,
and Liqueurs.



Plum & Worcester
Sauces.

—
Pickles and
Vinegars.

—
Candied Peels.

PRESERVED and DRIED FRUITS, JAMS, Etc., Etc.

✧ **Proprietors of the Jamestown Butter Factory.** ✧

The Largest and most Up-to-date country Butter Factory in South Australia.

THE PREMIER COLONIAL INSURANCE COMPANY.



EST. 1859.

New Zealand Insurance Co., Ltd.

Issues Policies covering every description of Fire, Marine,
General Accident and Live-Stock Risks at Lowest Rates.

Live Stock
Employers' Liability,
Workmen's
Compensation and
Common Law.
Personal
Accident and
Sickness.
Plate Glass.
Burglary.
Fidelity Guarantee.
Fire.
Marine.

THE NEW ZEALAND INSURANCE COMPANY is the oldest and wealthiest of the purely colonial companies carrying on business in the Southern Hemisphere. The following figures afford a good illustration of its business and financial strength:—

		Premiums.	Losses Paid.	Paid-up Capital and Reserves.
1895	£267,917	£172,137	£435,000
1900	342,036	195,804	455,000
1905	425,991	273,698	708,680
1906	565,149	*346,749	630,000
			x285,695	
1907	616,417	406,578	690,000
1908	620,424	409,357	735,000
	*General Losses.		xSan Francisco Disaster.	

Since the establishment of the Company in 1859 it has paid claims aggregating over £7,000,000. Its subscribed capital is £1,500,000, of which £300,000 is paid up.

The Company issues policies of every description covering Fire (including haystack and growing crops, and harvesting machinery in the field). Marine (including open policies covering wool from sheep's back and goods shipped from Europe or elsewhere), Fidelity Guarantee, Personal Accident, Employers' Liability, Plate Glass, Burglary, and Live Stock Risks and is noted for prompt and liberal settlements.

The insurance of Live Stock includes mortality arising from natural causes and accidents, as well as from the necessity of destruction in the interests of humanity as the result of an accident. The risks of foaling, castration, firing, transit by rail or boat, etc., can also be covered.

The head office is in Auckland, New Zealand, and its branches are scattered over the civilised world. The South Australian Branch Office is at 112, King William Street, Adelaide

[From the 38th Annual Report of the S.A Chamber of Manufactures (Incorporated)].

CLAIMS PAID EXCEED £7,000,000.

FULL PARTICULARS AND RATES OBTAINABLE FROM—

THE MANAGER, 112, KING WILLIAM STREET, ADELAIDE.

Influential Agents Wanted where not Represented.

OR AGENTS IN CHIEF CENTRES.

MILLARS' KARRI & JARRAH CO. (1902) LTD.

Head Office: 72, Bishopsgate Street, Within London, E.C.

Head Office in Australia: Lord Street, Perth, W.A.

AUSTRALASIAN BRANCHES: Adelaide, Melbourne, Sydney, Brisbane, Auckland, Wellington, and Dunedin.

FOREIGN BRANCHES: North and South America, Egypt, East Africa, China, Hong Kong, Manila, India, Singapore, Ceylon, and Continent of Europe.

The fame of jarrah hardwood is world-wide. Thanks to Millars' Karri and Jarrah Company (1902), Ltd., Australia's best hardwood is now to be found in practically every civilised portion of the world. Markets have been found in

much controversy took place, has been laid in jarrah, both by the Tramway Trust and the City Corporation. King William-street, when the blocking is completed, should be noted throughout the world as one of Australia's best

a million sterling in this item alone. Jarrah is now being largely used for the finer works, such as furniture and cabinet making, its close resemblance to mahogany and rosewood, and its easy working, commends it to all who value Australian timber rich in grain and color. Its durability under all conditions is well known. Piles that have been down for upwards of 70 years have been drawn, and when cut into planks have been found to be quite perfect. Fence-

timber other than jarrah is used in Victoria. More conclusive evidence could not be brought, as the Commonwealth use jarrah exclusively in undergrounding their telephone wires. Millars' Company make a speciality of seasoned jarrah flooring. Upwards of 30,000,000 lineal feet are always in stock undergoing a process of seasoning. For warehouses, hospitals, public buildings, factories and schools, residences, &c., &c., there is no timber to equal it.



HAULING JARRAH LOGS TO LANDING, WESTERN AUSTRALIA.

the United Kingdom, the Continent, North and South America, the Far East, South Africa, India, and all the Australian States and New Zealand. The immunity of jarrah from the attacks of white ants, teredo, dry rot, &c. specially recommends it for piles, wharf timbers, telegraph and telephone poles, railway and tramway sleepers, &c., &c.

The majority of the sleepers used in the construction of the Adelaide tramways are of jarrah, and the paving of King William-street, about which so

roads, the dust being reduced to a minimum, and under ordinary conditions this road should remain in a perfect state of preservation for a great many years.

During the 12 months ending 1903 Millars' Company cut and exported upwards of 120,000,000 super feet of jarrah to all parts of the globe. This is far in excess of the total output of either Queensland or New South Wales. This means that Australian trade has benefited to the extent of about half



HAULING JARRAH, WESTERN AUSTRALIA.

ing posts that have been in the ground for 50 to 60 years have been taken out and, on examination, no signs of decay has been evident.

For underground troughing to carry electric light and telephone cables, no

Being thoroughly seasoned it does not shrink at the joints, and its non-inflammability places it in the front rank of fire-resisting materials, as has been proved and reported by such a recognised authority as the London Fire Brigade.

AMGOORIE TEA

Packed in Three Grades.

No. 1.

SPECIAL.

No. 2.

☞ And is Never Sold Loose. ☞

THE Cake and Scone Maker,

LION

SELF-RAISING

FLOUR.

FRY'S COCOA

— AND —

CHOCOLATES.

Over 300 Gold Medals, Diplomas,
&c., &c.

