



WALLACE

ERECTED BY THE PUBLIC WALLARAT
BY THE ARTS
JAMES RUSSELL THOMSON
DIED 24th MAY 1880

THE STATUE WAS DESIGNED BY MR. J. R. THOMSON
AND WAS CAST IN BRASS BY THE BRASS FOUNDRY
OF BRISTOL. THE STATUE IS THE PROPERTY OF THE
CITY OF WALLARAT. THE STATUE WAS
ERECTED IN 1880. THE STATUE IS THE PROPERTY
OF THE CITY OF WALLARAT. THE STATUE WAS
ERECTED IN 1880.

Ballarat

"THE GARDEN CITY"

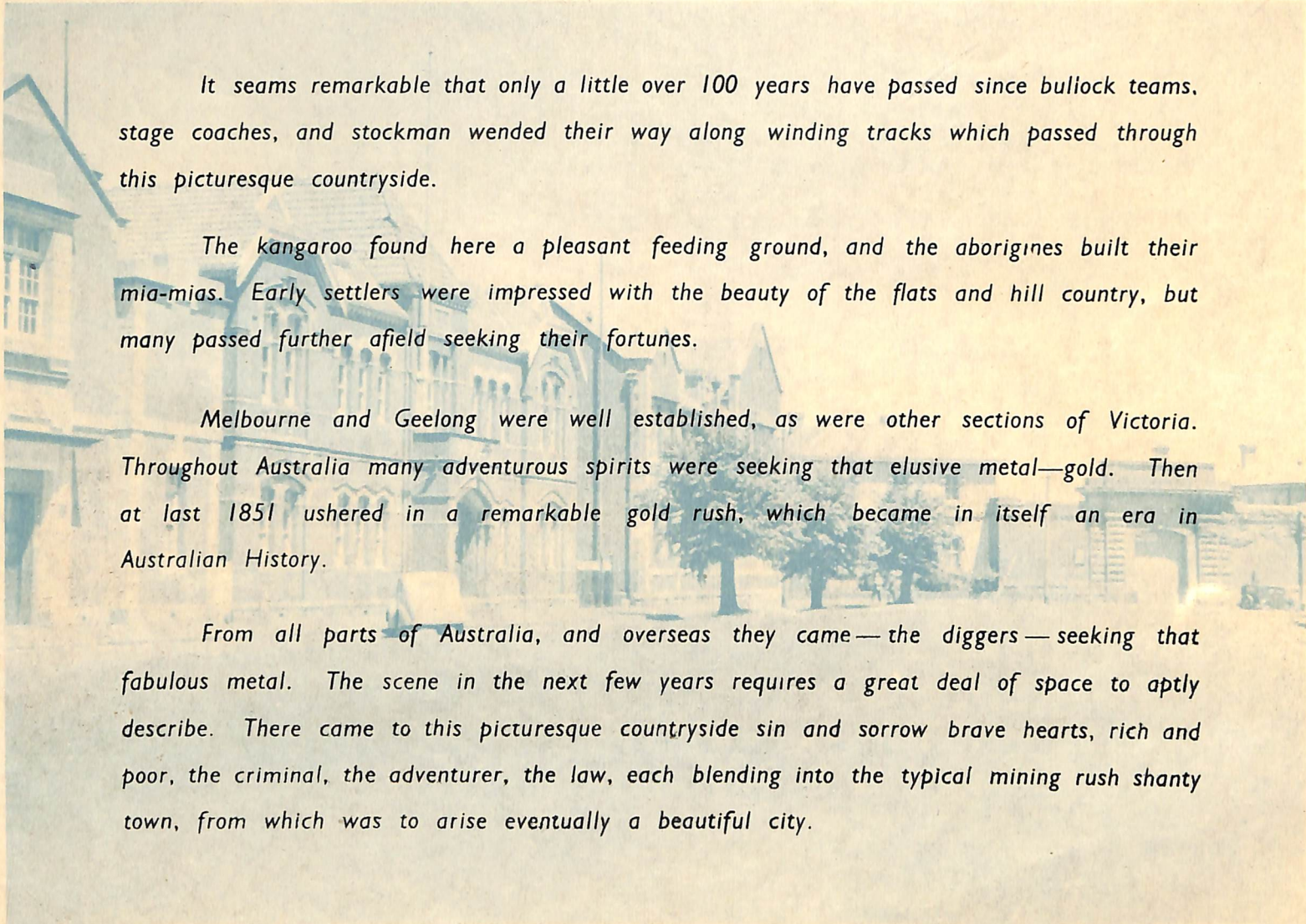
BALLARAT - VICTORIA - AUSTRALIA

ONE OF THE LEADING PROVINCIAL CITIES OF AUSTRALIA, BALLARAT IS FAMOUS FOR ITS BEAUTIFUL GARDENS, ITS STATUARY, ITS GOLDMINING HISTORY AND ITS CULTURAL DEVELOPMENT.

WILLIAM YUILLE set up his camp in 1838, thus becoming the first resident, but in 1851 the discovery of gold started a tremendous influx of diggers. It was in 1852 that the township of Ballarat was laid out. The growth was remarkable and left its impact on the still young colony of Victoria.

To read the history of Ballarat, is to delve into a fascinating story of courage, hardship, luck, rival factions, diggers in arms against the law, wide vision of the early city authorities, and a welding together of a cosmopolitan community to create a gracious city. These pages do not permit more than a brief survey.

For many years the correct spelling was Ballaarat—even today still observed by some people—but time has brought Ballarat to be known throughout the length and breadth of Australia. The early officials have left their mark in such street names as Sturt, Doveton, Lydiard, Mair, Eyre. Webster, and Drummond.

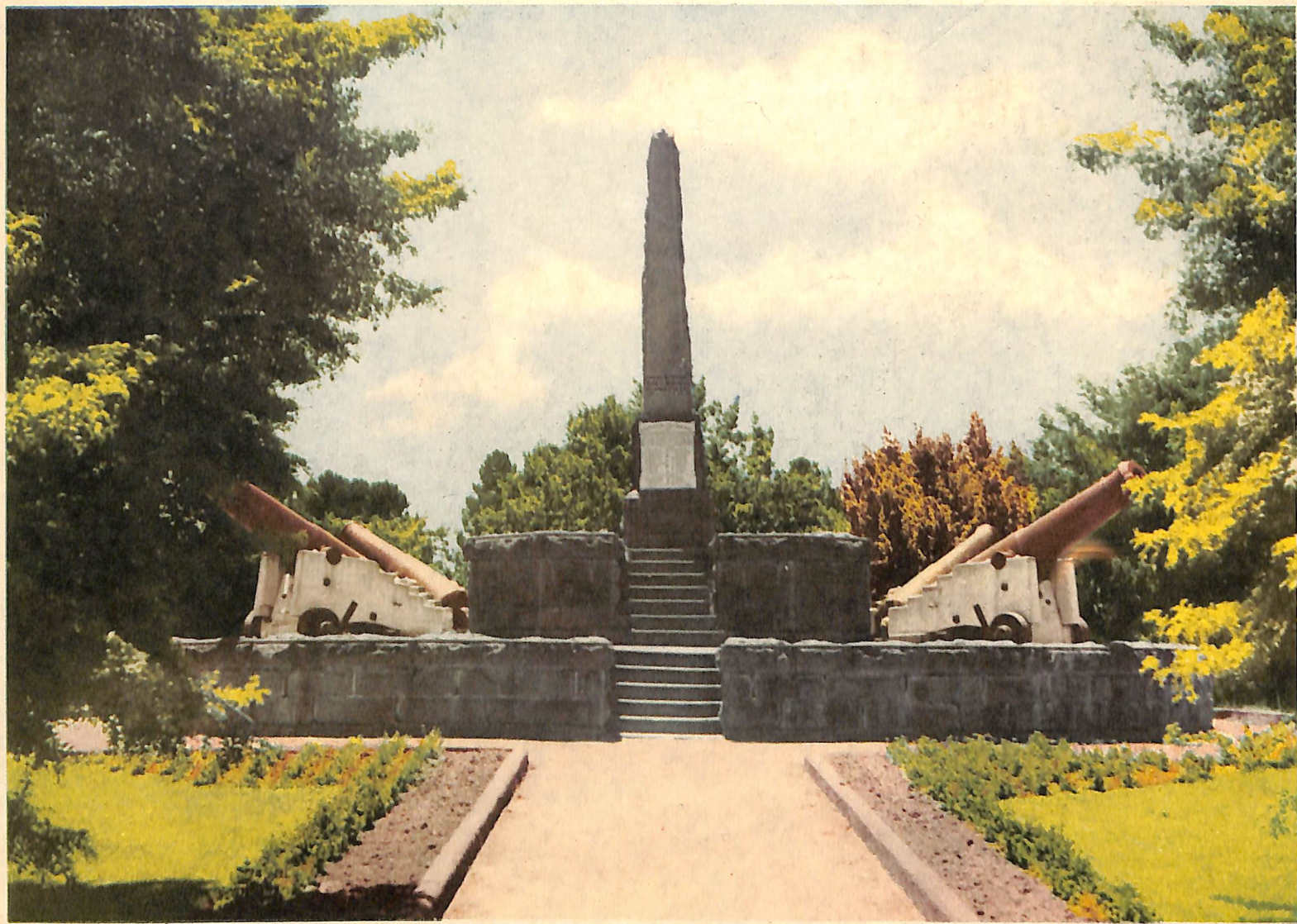


It seems remarkable that only a little over 100 years have passed since bullock teams, stage coaches, and stockman wended their way along winding tracks which passed through this picturesque countryside.

The kangaroo found here a pleasant feeding ground, and the aborigines built their mia-mias. Early settlers were impressed with the beauty of the flats and hill country, but many passed further afield seeking their fortunes.

Melbourne and Geelong were well established, as were other sections of Victoria. Throughout Australia many adventurous spirits were seeking that elusive metal—gold. Then at last 1851 ushered in a remarkable gold rush, which became in itself an era in Australian History.

From all parts of Australia, and overseas they came—the diggers—seeking that fabulous metal. The scene in the next few years requires a great deal of space to aptly describe. There came to this picturesque countryside sin and sorrow brave hearts, rich and poor, the criminal, the adventurer, the law, each blending into the typical mining rush shanty town, from which was to arise eventually a beautiful city.



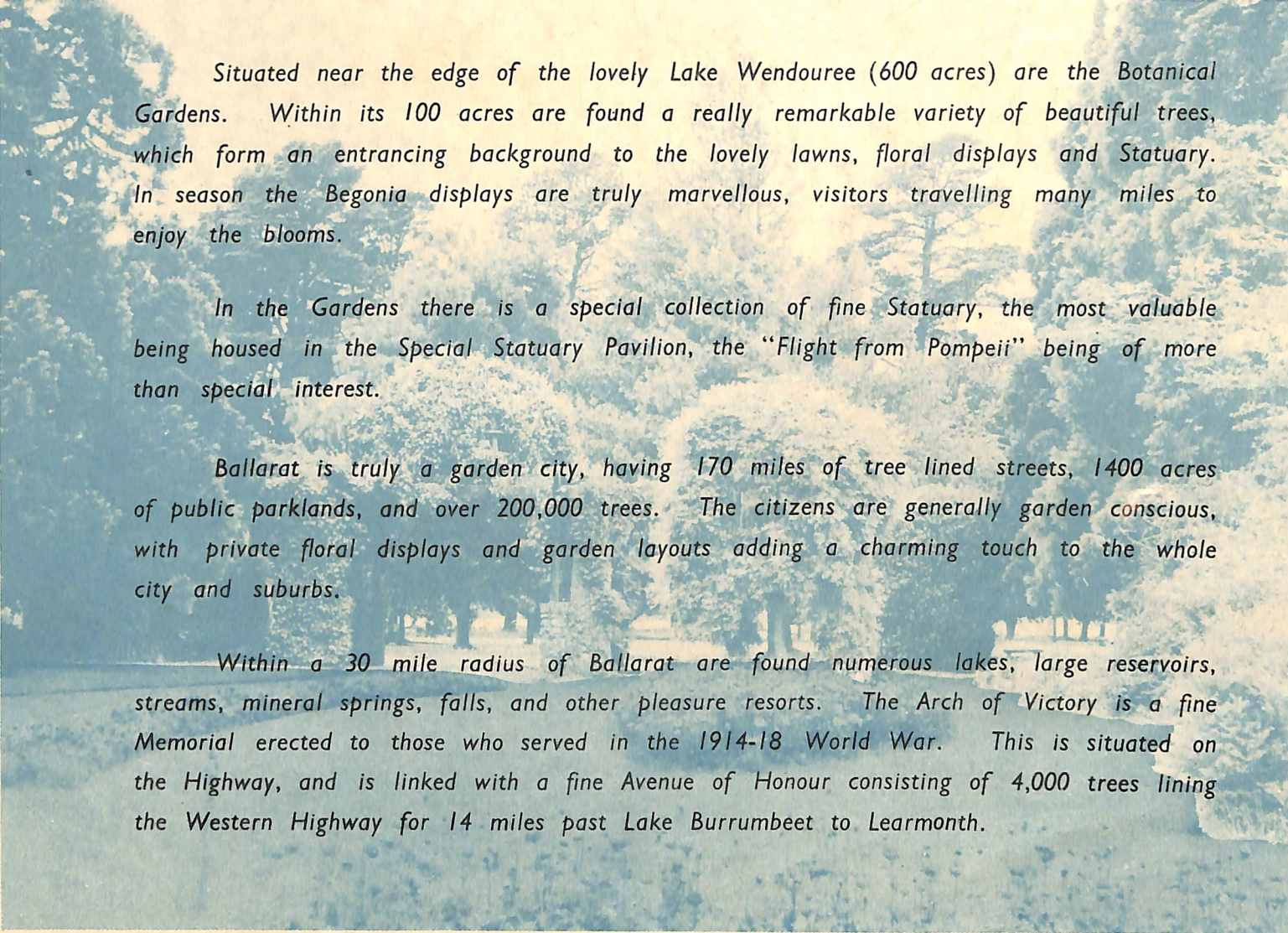
EUREKA STOCKADE.—Scene of the famed battle of Eureka where Peter Lalor and his men fought in defence of the miners' rights.
Now an attractive park with swimming pool and gardens.



A CORNER OF LAKE WENDOUREE.—This fine sheet of water provides excellent swimming, fishing, boating etc. It contains the widest rowing course in Australia. Fine homes face the Lake, and the lovely Botanical Gardens are on the western shore.



Another section of Sturt Street, one of the finest thoroughfares in Australia. This is only one of a number of streets in which are centered the business and commercial activities of the City.

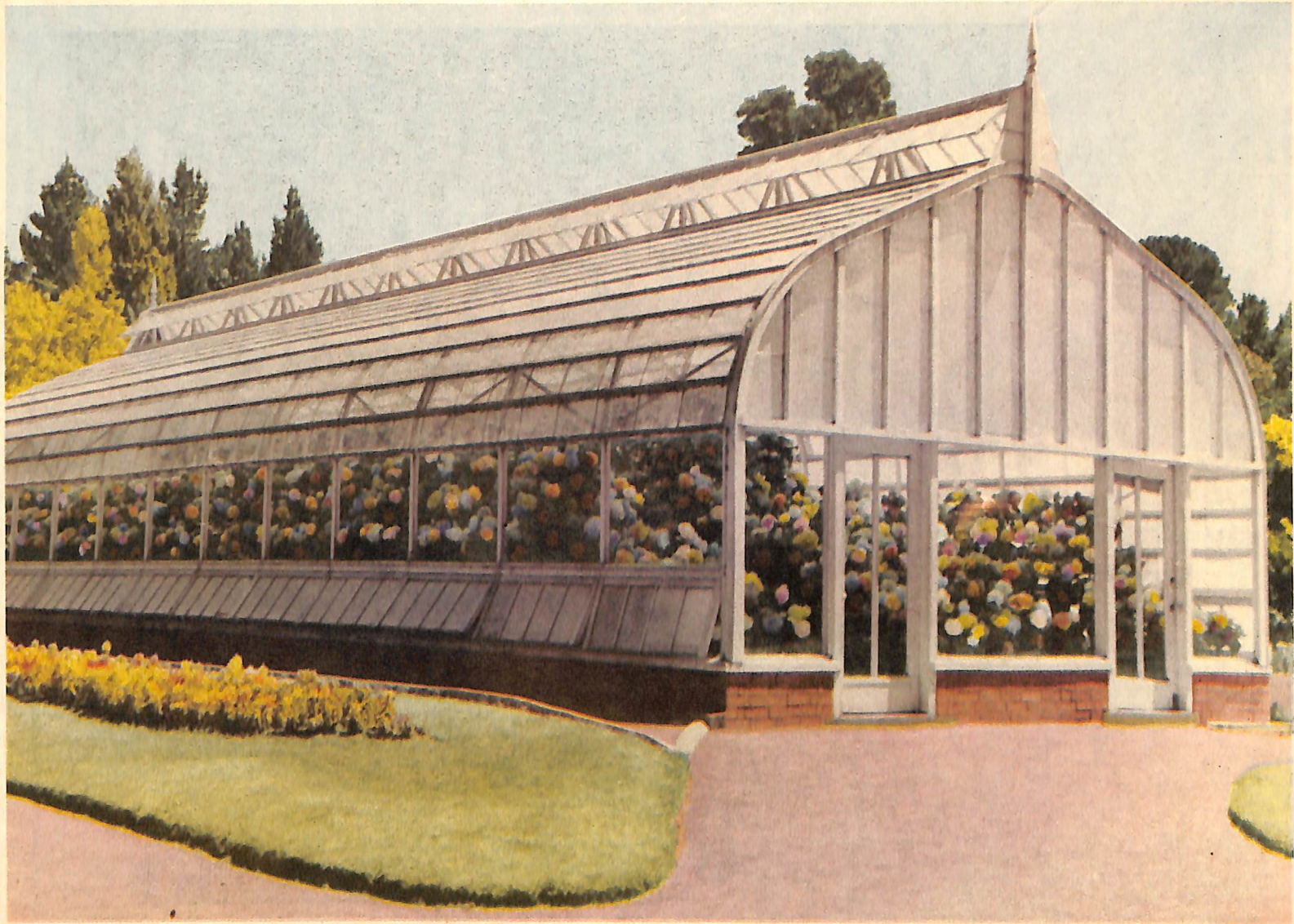
A blue-tinted photograph of a park with many trees and a path. The text is overlaid on the image.

Situated near the edge of the lovely Lake Wendouree (600 acres) are the Botanical Gardens. Within its 100 acres are found a really remarkable variety of beautiful trees, which form an entrancing background to the lovely lawns, floral displays and Statuary. In season the Begonia displays are truly marvellous, visitors travelling many miles to enjoy the blooms.

In the Gardens there is a special collection of fine Statuary, the most valuable being housed in the Special Statuary Pavilion, the "Flight from Pompeii" being of more than special interest.

Ballarat is truly a garden city, having 170 miles of tree lined streets, 1400 acres of public parklands, and over 200,000 trees. The citizens are generally garden conscious, with private floral displays and garden layouts adding a charming touch to the whole city and suburbs.

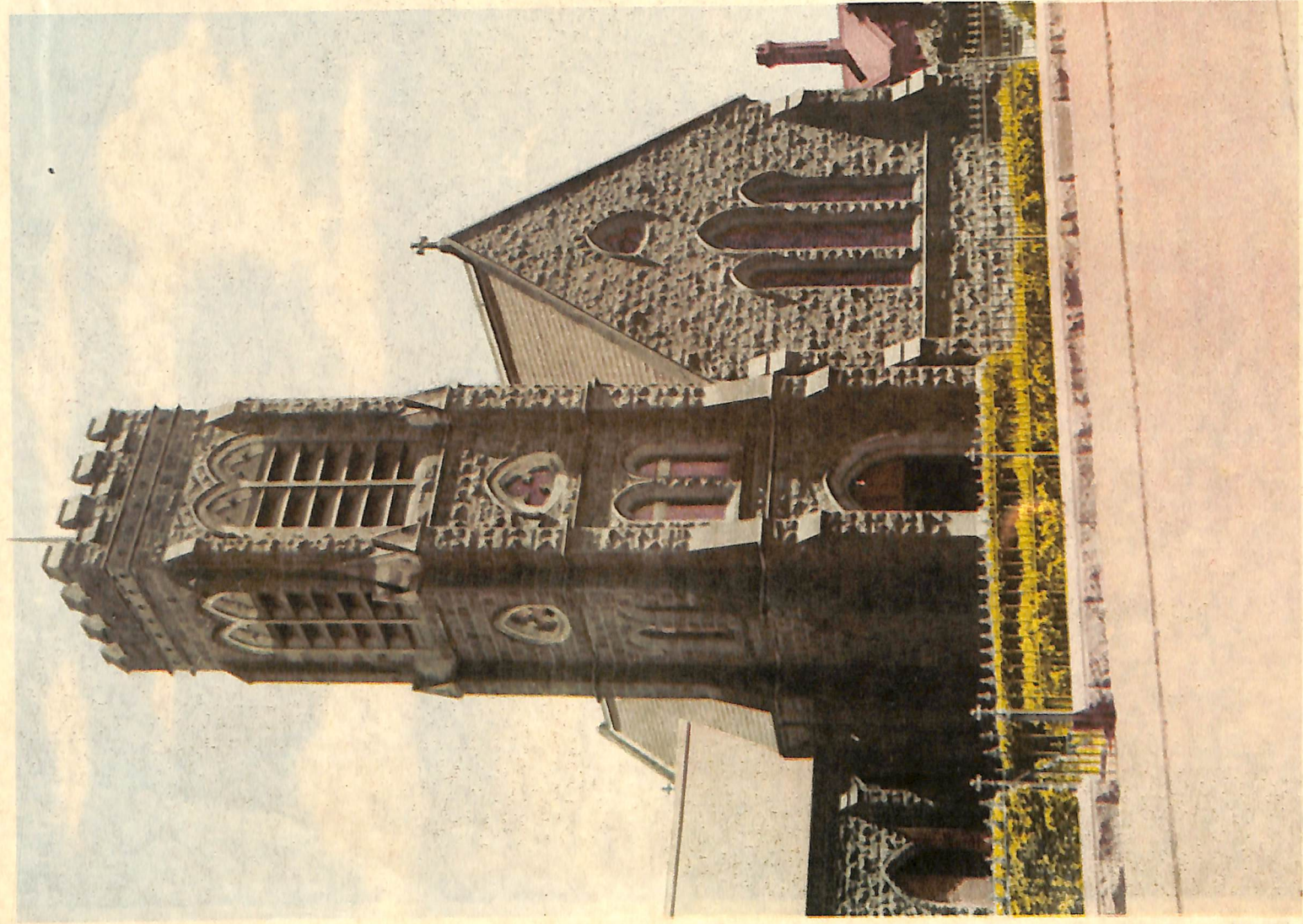
Within a 30 mile radius of Ballarat are found numerous lakes, large reservoirs, streams, mineral springs, falls, and other pleasure resorts. The Arch of Victory is a fine Memorial erected to those who served in the 1914-18 World War. This is situated on the Highway, and is linked with a fine Avenue of Honour consisting of 4,000 trees lining the Western Highway for 14 miles past Lake Burrumbeet to Learmonth.



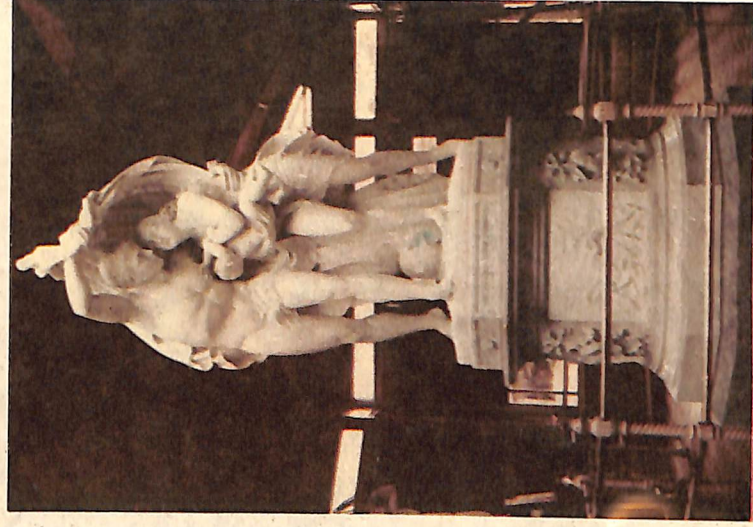
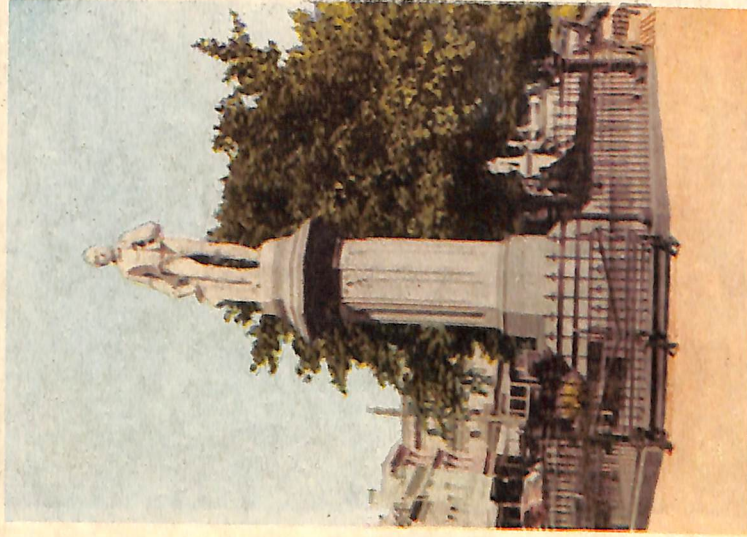
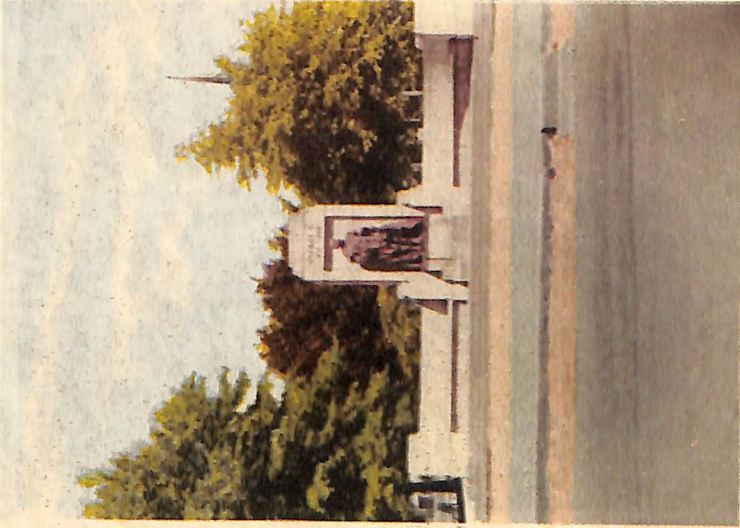
DISPLAY OF BEGONIAS IN THE BOTANICAL GARDENS.—There are several such houses devoted to magnificent displays for which Ballarat is famous.



ST. ANDREW'S KIRK (Presbyterian) in Sturt Street. The Peter Lalor Monument in the foreground stands in the Sturt Street Gardens and overlooks the City with which his name is so closely linked



ST. PETER'S CHURCH OF ENGLAND.—A fine building and typical of the many lovely Ballarat Churches of all denominations. These Churches built by the early pioneers and settlers add to the beauty and charm of the city streets.



Top. King George V. Memorial.
Below. Moore Monument.

Top. Queen Victoria Memorial.
Below. "Flight from Pompeii."



Top. Post Office
Below. State Offices.

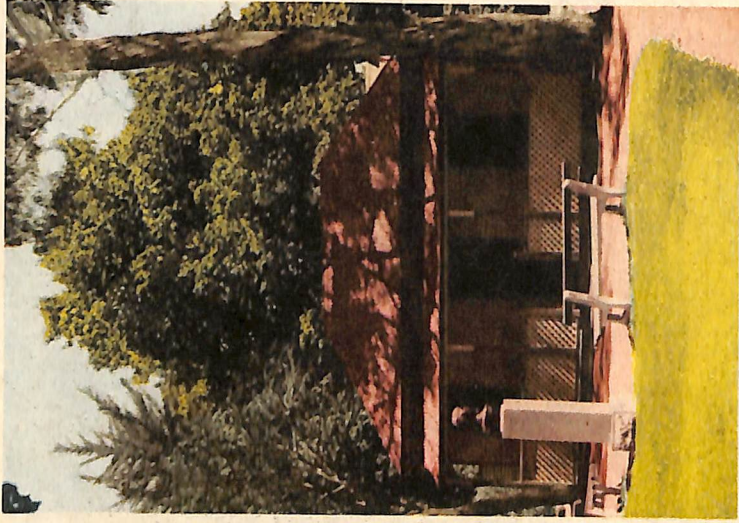
Top. Ballarat Orphanage.
Below. Queen Elizabeth Benevolent Home.



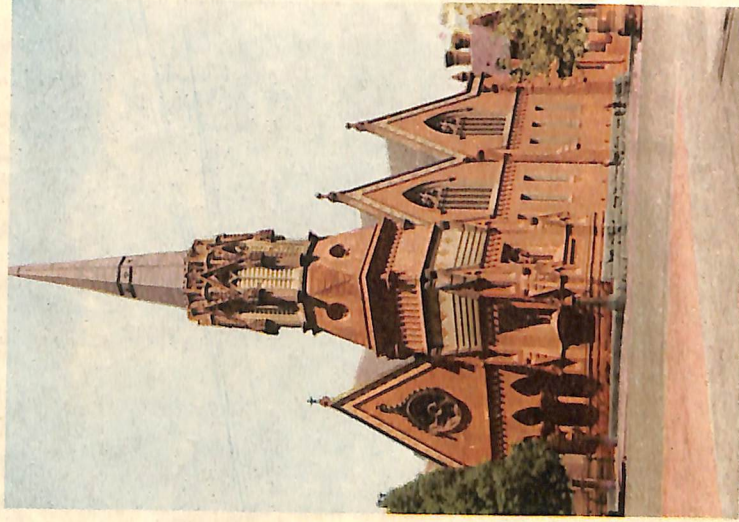
Ballarat has many excellent reservoirs; they not only provide an ample water supply for the City but serve as attractive picnic resorts.



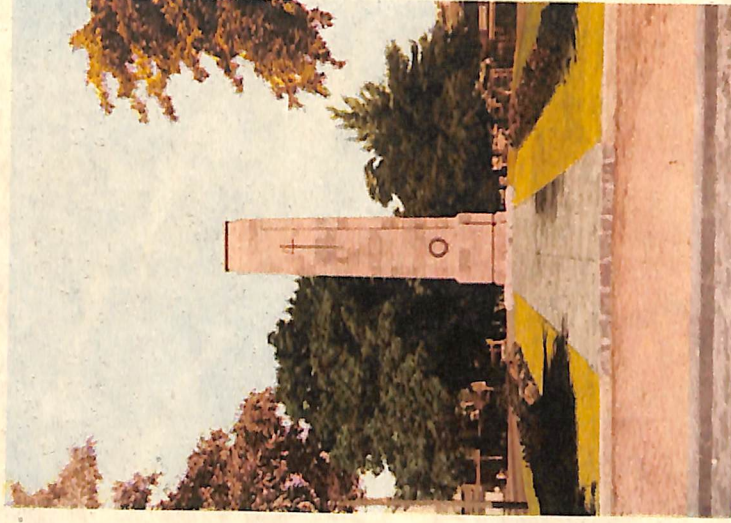
A SCENE IN THE BOTANICAL GARDENS.—This is typical of many delightful corners in Ballarat's gardens and parks.

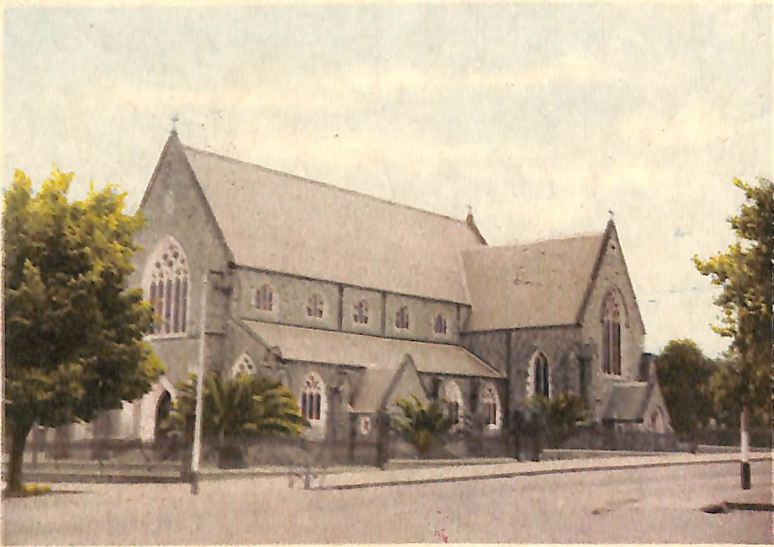


Top. Gordon's Cottage.
Below. Congregational Church.



Top. Lydiard Street.
Below. The Cenotaph.





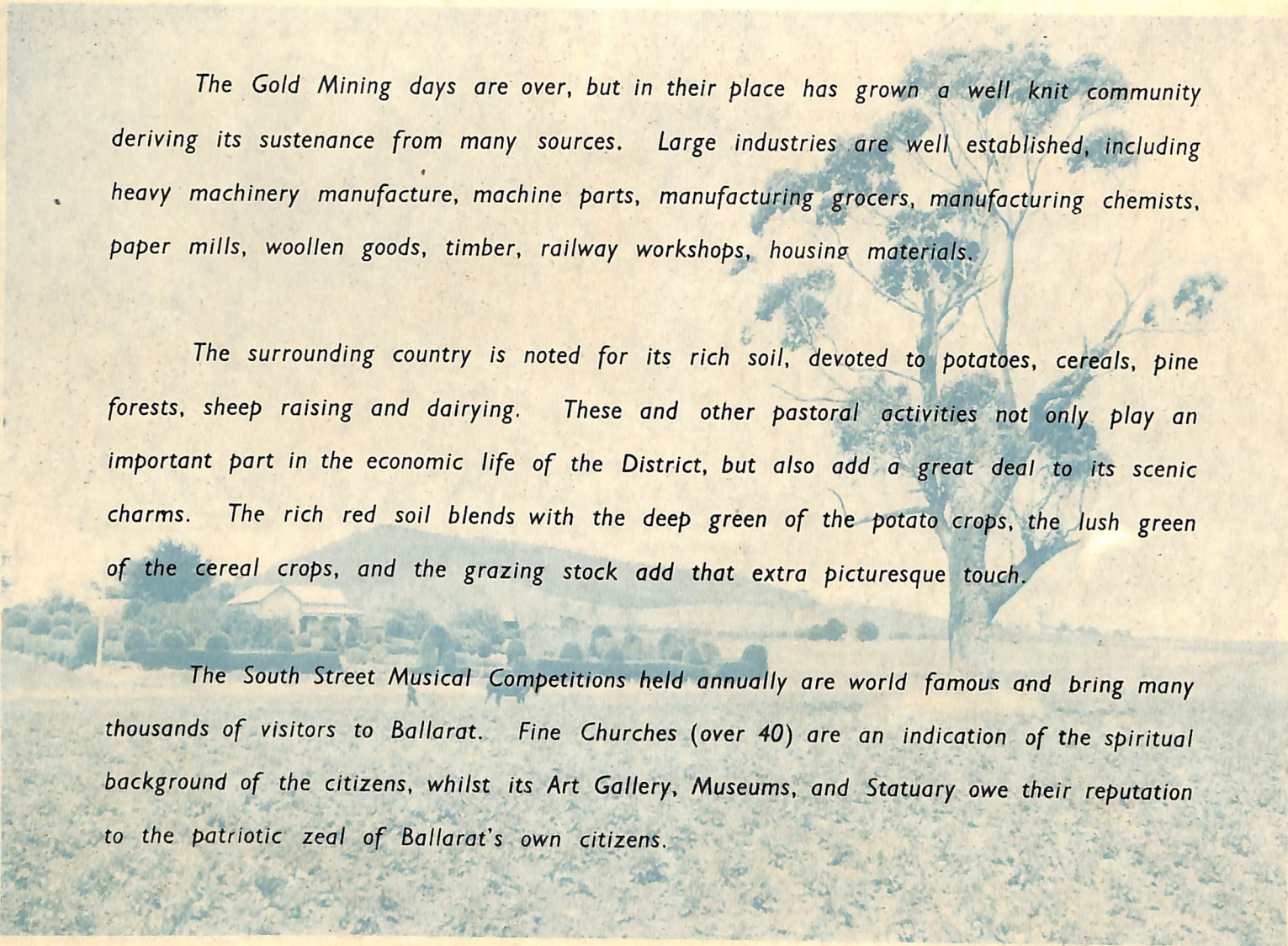
Top. Ballarat Grammar School.
Below. St. Patrick's Cathedral.

Top. St. Patrick's College.
Below. Pretty Street scene.



Top. Arch of Victory.
Below. Paddle Boat on Lake.

Top. Sturt Street.
Below. Eureka Swimming Pool.



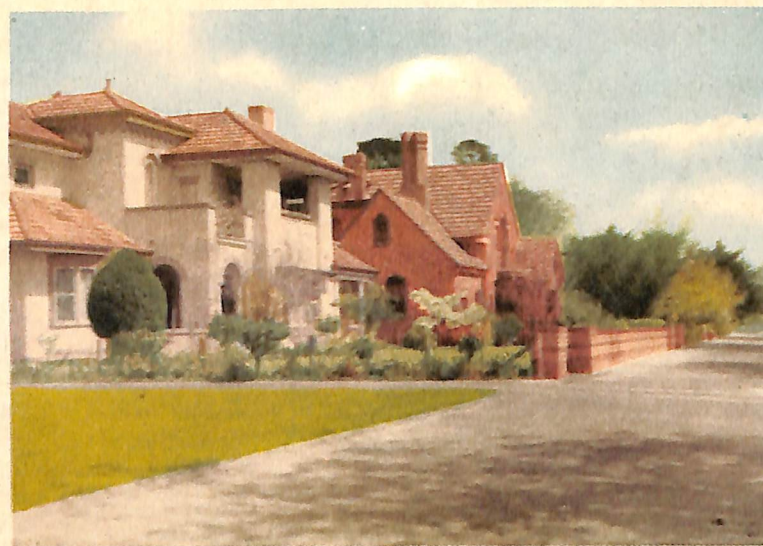
The Gold Mining days are over, but in their place has grown a well knit community deriving its sustenance from many sources. Large industries are well established, including heavy machinery manufacture, machine parts, manufacturing grocers, manufacturing chemists, paper mills, woollen goods, timber, railway workshops, housing materials.

The surrounding country is noted for its rich soil, devoted to potatoes, cereals, pine forests, sheep raising and dairying. These and other pastoral activities not only play an important part in the economic life of the District, but also add a great deal to its scenic charms. The rich red soil blends with the deep green of the potato crops, the lush green of the cereal crops, and the grazing stock add that extra picturesque touch.

The South Street Musical Competitions held annually are world famous and bring many thousands of visitors to Ballarat. Fine Churches (over 40) are an indication of the spiritual background of the citizens, whilst its Art Gallery, Museums, and Statuary owe their reputation to the patriotic zeal of Ballarat's own citizens.



THE AVENUE OF PRIME MINISTERS.—Here in the Botanical Gardens are erected the bronze busts of each Prime Minister of Australia. This Avenue, like so many of Ballarat's statuary, has been donated by Ballarat Citizens.



Top. Harvest time near Mt. Warrenheip.
Below. Typical Ballarat countryside.

Top. A typical Ballarat Industry.
Below. Modern Ballarat Homes.

Ballarat has a population of nearly 50,000, and is an important rail junction. A direct line connects with a fine sea port at Geelong (50 miles), with other lines connecting to Melbourne (70 miles), Mildura, Western Victoria and South Australia.

Internal transport is by electric tramways and numerous motor bus routes, serving all sections of Ballarat and suburbs.

The climate is ideal, with an elevation of 1416 feet above sea level, and a rainfall of 27 inches. Excellent water storages provide good water supply, and both gas and electricity are produced locally. Over 640 tons of gold have been won at Ballarat, the largest lump ever found in the world (168 lb. weight), known as the Welcome Nugget, was found at Bakery Hill in 1858.

There are many excellent schools—Primary, Secondary, Technical—as well as numerous denominational Colleges. Educational facilities are extensive and enjoy a sound reputation. Large departmental stores combine with the smaller traders to give every facility to residents. Banks, Insurance Companies, and all large commercial interests are well established to cater for the needs of this virile city and district.

Excellent Golf Courses, Bowling Greens, Tennis Courts, Recreation Grounds, Parklands, Race Courses, are available and there are excellent facilities for swimming, hiking, fishing, boating, and shooting. In all, Ballarat is an ideal centre for a holiday; to live and work; and it is full of opportunity in many directions.

PUBLISHED BY NUCOLORVUE PRODUCTIONS
MENTONE, VICTORIA, AUSTRALIA
COPYRIGHT