

REDUCTIONS IN ELECTRICITY CHARGES

Recent Reductions in Electricity Charges
make it still more economical to use
Electrical Appliances

Let Electricity Solve Your

LIGHTING
HEATING
and
POWER
PROBLEMS

For information and literature call at
our Office, Wendouree Parade, Ballarat,
or 'Phone Ballarat 1825

Electricity:
The Universal Servant



ELECTRICITY SUPPLY DEPARTMENT
BALLARAT TRAMWAYS

Official
Time Table

JANUARY . . 1939

(Cancelling all previous Time Tables)

Issued by

ELECTRICITY SUPPLY DEPARTMENT

Wendouree Parade, Ballarat

Tramway Offices:
STURT STREET

3352
copy 2

BALLARAT TRAMWAYS

OFFICIAL TIME-TABLE

NOTE

The application of the Through-Routing principle to the Ballarat system has enabled a basic service of 20-minute interval to be provided on each route.

This basic service time-table is unchanged throughout the day on Sunday and week-day from commencement of service to finish.

Trams additional to the basic service on Sundays, holidays, etc., will be run during busy periods and are not shown in the time-table.

All "Out" times apply to the Tramways Centre at the intersection of Lydiard and Sturt Streets.

The thick pointers on clock dials in this Booklet apply to the basic service, and where thin pointers are added, such thin pointers are the times of the additional service.

THROUGH ROUTING

DETAILS

Trams Run Through City Centre:

From VICTORIA STREET ROUTE
To STURT ST. WEST ROUTE

From MOUNT PLEASANT ROUTE
To DRUMMOND ST. Nth. ROUTE

From LYDIARD ST. Nth. ROUTE
To SEBASTOPOL ROUTE

From STURT ST. WEST ROUTE
To MOUNT PLEASANT ROUTE

From DRUMMOND ST. Nth. ROUTE
To VICTORIA ST. ROUTE

From SEBASTOPOL ROUTE
To LYDIARD ST. Nth. ROUTE

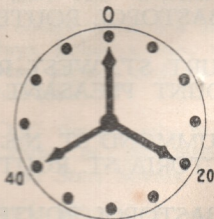
Trams designated "City" terminate at the Tramway Centre

OUT

TO GARDENS
(Via Sturt Street West)

Leave TRAMWAY CENTRE at
Each Hour
20 minutes past the Hour
20 minutes to the Hour

Weekdays Sundays
7.20 a.m. —First Tram— 1.40 p.m.
11.40 p.m. —Last Tram— 10.40 p.m.



Trams Pass

Drummond Street 4 minutes later
Pleasant Street 7 minutes later

OUT

To STURT STREET WEST
(Victoria Park Only)

EXTRA TRAMS

Weekdays at

8.30 a.m., 12.30 p.m., 1.30 p.m.

Trams Pass

Drummond Street 4 minutes later
Pleasant Street 7 minutes later

IN

6

FROM GARDENS
(Via Sturt Street West)

Leave GARDENS PAVILION at

10 minutes past the Hour

Half-past the Hour

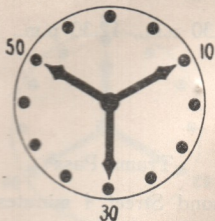
10 minutes to the Hour

Weekdays

Sundays

6.50 a.m. —First Tram— 1.30 p.m.

10.50 p.m. —Last Tram— 9.50 p.m.



Trams Pass

Victoria Park 4 minutes later

Pleasant Street 10 minutes later

7

IN

FROM STURT ST. WEST
(Victoria Park)

EXTRA TRAMS

Weekdays at

7.44 a.m., 8.44 a.m., 12.44 p.m., 1.44 p.m.

Trams Pass

Pleasant Street 6 minutes later

OUT

TO GARDENS

(Via Drummond Street North)

Leave TRAMWAY CENTRE at

10 minutes past the Hour

Half-past the Hour

10 minutes to the Hour

Weekdays

Sundays

7.30 a.m.	—First Tram—	1.50 p.m.
10.30 p.m.	—Last Tram—	9.30 p.m.
10.50 p.m.	To Depot only	9.50 p.m.
11.10 p.m.	„	10.10 p.m.
11.30 p.m.	„	10.30 p.m.



Trams Pass

Hospital Corner 4 minutes later
Old Cemetery 8 minutes later

OUT

TO HADDON STREET

(Via Drummond Street North)

EXTRA TRAMS

Weekdays at

8.0 a.m., 9.0 a.m., 12.0 noon, 1.0 p.m.

Fridays only

4.20 p.m., 5.0 p.m., 5.40 p.m., 6.8 p.m.

Trams Pass

Hospital Corner 4 minutes later

Old Cemetery 8 minutes later

IN

FROM GARDENS (Via Drummond Street North)

Leave GARDENS PAVILION at

19 minutes past the Hour

21 minutes to the Hour

1 minute to the Hour

Weekdays

Sundays

7.39 a.m. —First Tram— 1.59 p.m.

10.39 p.m. —Last Tram— 9.39 p.m.

From Depot only:

6.44 a.m. —First Tram— 1.24 p.m.
then

7.4 a.m. " 1.44 p.m.

7.24 a.m. "

59



Trams Pass

Depot Loop 5 minutes later

Haddon Street 8 minutes later

IN

FROM HADDON STREET (Via Drummond Street North)

EXTRA TRAMS

Weekdays at

8.17 a.m., 12.17 p.m., 1.17 p.m.

Fridays only

4.37 p.m., 5.17 p.m., 5.57 p.m.

Trams Pass

Hospital Corner 7 minutes later

OUT

12

TO RUBICON STREET and SEBASTOPOL

Leave TRAMWAY CENTRE at

15 minutes past the Hour

25 minutes to the Hour

5 minutes to the Hour

Weekdays

6.55 a.m. —First Tram— 1.55 p.m.

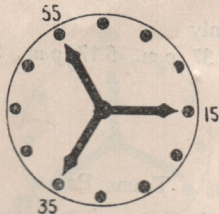
11.15 p.m. —Last Tram— 10.15 p.m.

Sundays

At Drummond/Sturt Streets
(From Depot):

6.19 a.m. —First Tram— 1.19 p.m.

6.39 a.m. 1.39 p.m.



Trams Pass

Hospital Corner 4 minutes later

Rubicon Street 14 minutes later

OUT

13

TO RUBICON ST. ONLY

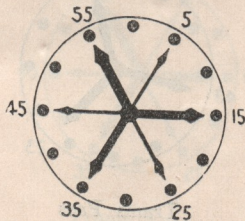
Trams at 10 minute intervals during periods as shown (Holidays excepted)

Monday to Thursday

from 11.55 a.m. to 7.35 p.m.

Friday from 11.55 am. to 9.35 p.m.

Saturday from 10.35 a.m. to 2.15 p.m.
from 4.55 p.m. to 7.35 p.m.



Trams Pass

Hospital Corner 4 minutes later

OUT

TO LYDIARD ST. NORTH (New Cemetery)

Leave TRAMWAY CENTRE as shown

- At 9 minutes past the Hour
- 29 minutes past the Hour
- 11 minutes to the Hour

Weekdays

7.9 a.m.

—First Tram—

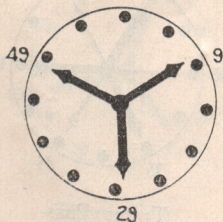
11.9 p.m.

—Last Tram—

Sundays

1.29 p.m.

10.9 p.m.



Trams Pass

Brougham Street 7 minutes later

OUT

TO LYDIARD ST. NORTH (New Cemetery)

Trams at 10 minute intervals during periods as shown (Holidays excepted)

Monday to Thursday

from 11.49 a.m. to 7.29 p.m.

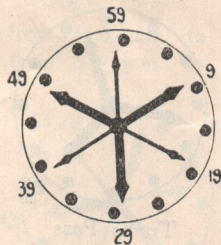
Friday

from 11.49 a.m. to 9.29 p.m.

Saturday

from 10.49 a.m. to 2.9 p.m.

from 4.49 p.m. to 7.29 p.m.



Trams Pass

Brougham Street 7 minutes later

IN

FROM LYDIARD ST. NORTH

Leave NEW CEMETERY as shown

At 3 minutes past the Hour

23 minutes past the Hour

17 minutes to the Hour

Weekdays

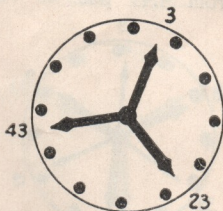
7.23 a.m. —First Tram—

11.23 p.m. —Last Tram—

Sundays

1.43 p.m.

10.23 p.m.



Trams Pass

Gregory Street 4 minutes later

Seymour Street 9 minutes later

IN

FROM LYDIARD ST. NORTH

(New Cemetery)

10 minute service during periods as below (Holidays excepted)

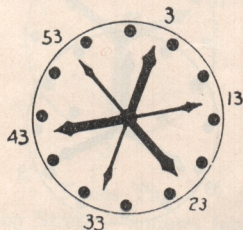
Monday to Thursday

from 12.3 p.m. to 7.43 p.m.

Friday from 12.3 p.m. to 9.43 p.m.

Saturday from 11.3 a.m. to 2.23 p.m.

from 5.3 p.m. to 7.43 p.m.



OUT

TO VICTORIA STREET

(Orphanage)

Leave TRAMWAY CENTRE as shown

19 minutes past the Hour

21 minutes to the Hour

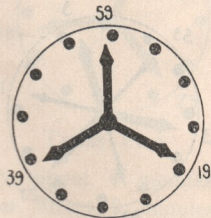
1 minute to the Hour

Weekdays

Sundays

6.59 a.m. —First Tram— 1.39 p.m.

11.19 p.m. —Last Tram— 9.59 p.m.



IN

FROM VICTORIA STREET

Leave ORPHANAGE as shown

At 11 minutes past the Hour

31 minutes past the Hour

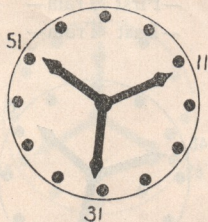
9 minutes to the Hour

Weekdays

Sundays

7.11 a.m. —First Tram— 1.51 p.m.

11.31 p.m. —Last Tram— 10.11 p.m.



Trams Pass

King Street 3 minutes later

OUT

TO MOUNT PLEASANT (Barkly Street)

Leave TRAMWAY CENTRE as shown

At 8 minutes past the Hour

28 minutes past the Hour

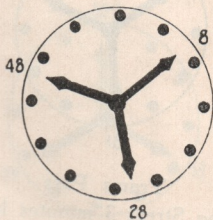
12 minutes to the Hour

Weekdays

7.8 a.m. —First Tram—
11.8 p.m. —Last Tram—

Sundays

1.48 p.m.
10.8 p.m.



IN

FROM MOUNT PLEASANT

Leave TERMINUS as shown

At Each Hour

20 minutes past the Hour

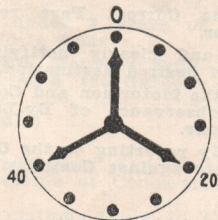
20 minutes to the Hour

Weekdays

7.20 a.m. —First Tram—
11.20 p.m. —Last Tram—

Sundays

2.0 p.m.
10.20 p.m.



Trams Pass
Grant Street 3 minutes later

SPECIAL NOTE

PASSENGERS WOULD FACILITATE TRAFFIC BY

- Noting that Check is nipped in correct destination space.
- Always keeping Check ready for inspection throughout the journey.
- Destroying the Check after leaving Tram.
- Distinctly hailing Tram at stopping place.
- Waiting for Passengers to alight before boarding Tram.
- Not standing at entrance to Tram.
- Having the Correct Fare ready for Conductor.
- Promptly and clearly notifying Conductor of desired destination.
- Assisting the Motormen and Conductors in the observance of By-Laws and Regulations.
- Immediately reporting to the Office any complaints against Commission's servants.

The Commission accepts no responsibility for any delay or irregularity which may occur from any cause whatsoever, and reserves to itself the right to alter this time-table without notice.

Schedule of Fares and Charges

Minimum Cash Fare (Adult)	3d.
Between City Zone & Section Destination No. 3	3d.
Between City & Sebastopol	4d.
Between City Zone & Section Destination No. 2	
Or between Section Destinations Nos. 2 & 3 and 3 & 4	2d. (by ticket only)
Between Boundaries of the City Zone	
Or in the Borough of Sebastopol between 1a & 3 or 4	1d. (by ticket only)
Children under 12 years of age	1½d. Cash
Children under 3 years of age held in arms	Free
TRANSFER —Between Rubicon Street & the Gardens (Adult)	3d.
Ditto (Child)	1½d. Cash

Scholars', Tourists', and Weekly Tickets are available at Concession Rates.

For information, apply to Conductors, or at the Commission's Office.

(For Luggage or Parcels and Newspaper Packages, see overleaf.)

LUGGAGE or PARCELS—

In charge of Passenger: Not exceeding in all 28 lbs. in weight, or 18 in. x 18 in. x 18 in. measurement

Free

In charge of Passenger, and exceeding above weight or dimensions

3d.

In charge of Conductor, not exceeding above weight or dimensions

3d.

NEWSPAPER PACKAGES—

In charge of Conductor: Books of 50 Tickets may be obtained at the Commission's Office

8/4

City Zone is the Area bounded by

Peel Street (East)

Dawson Street (West)

Railway (North)

SECTION DESTINATIONS**No. 2**

Queen St. Victoria St. Route
 Grant St. Mt. Pleasant Route
 Brougham St. Lydiard St. Route
 Drummond and Sturt Sts. Intersection
 Gardens and Sebastopol Routes

No. 3

Outer Terminus .. Victoria St. Route
 " " .. Mt. Pleasant Route
 " " .. Lydiard St. Route
 Rubicon St. Sebastopol Route
 Gardens Pavilion .. . Gardens Route

No. 4

Outer Terminus Sebastopol

Issued subject to the By-Laws:
 State Electricity Commission of Victoria