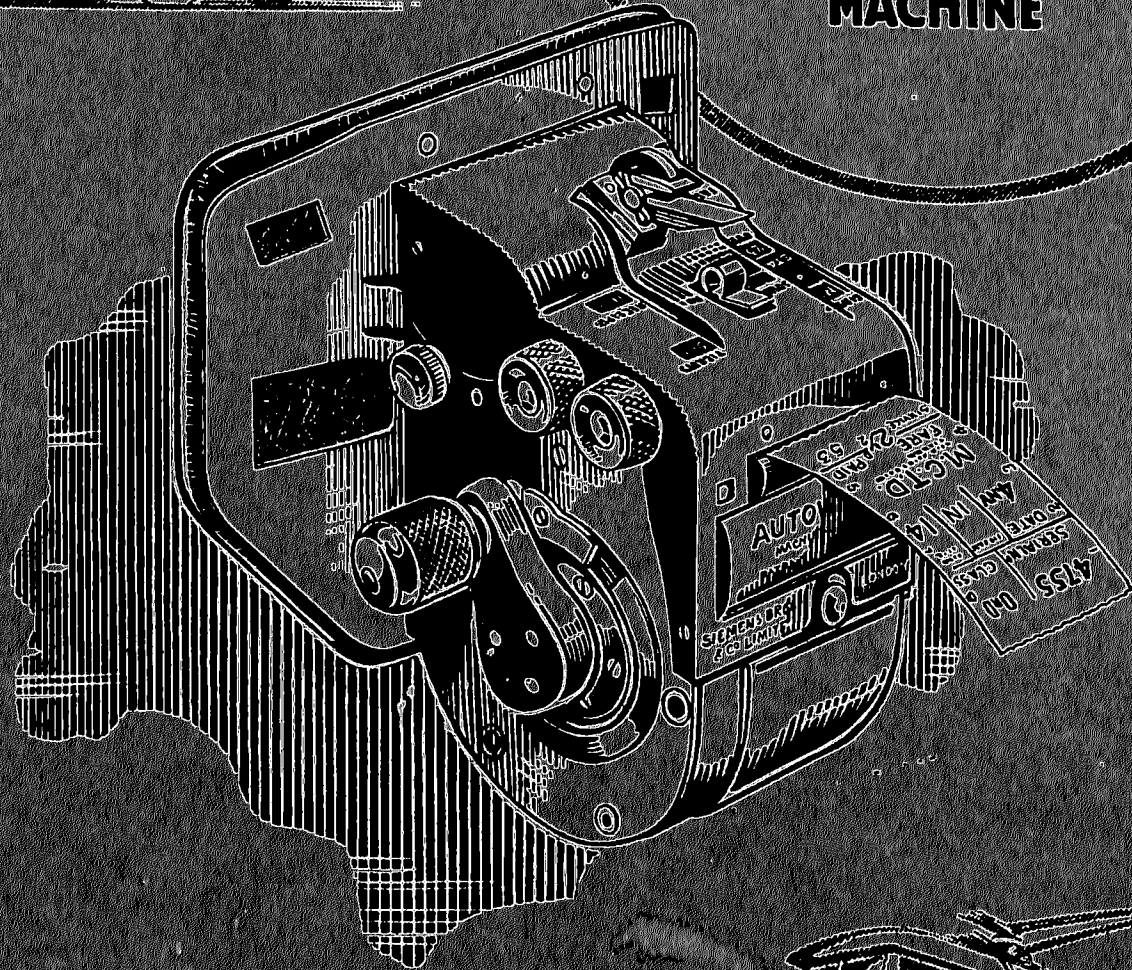


SIEMENS AUTOWAYBIL

TICKET ISSUING
MACHINE



Presented by Mrs Percell August 18th 1934

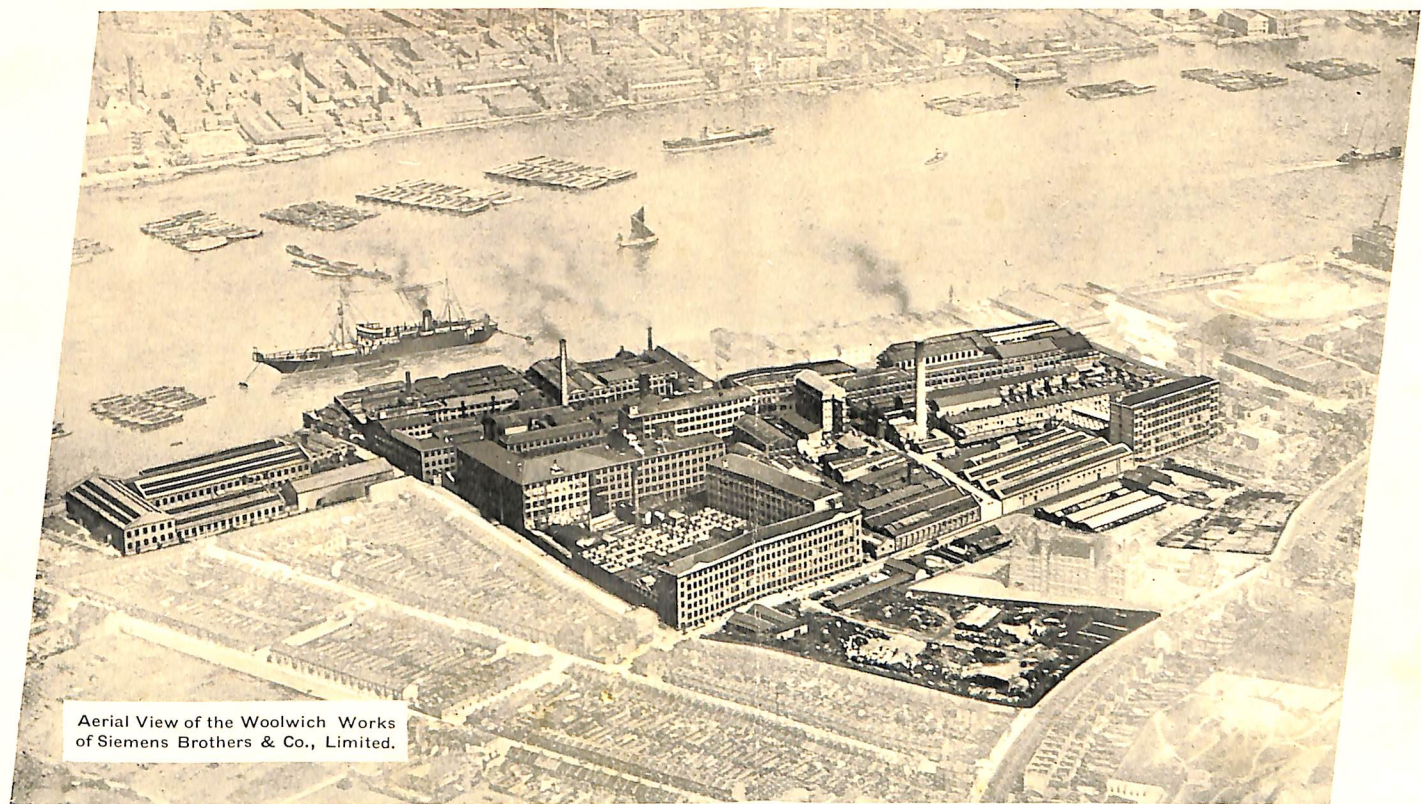
| | | | |
|---|--------------------------|---------|-----------------|
| 1 | 6324 | EX | |
| | SERIAL NO | CLASS | |
| 2 | 20AP | OUT | 04 |
| | DATE | JOURNEY | STAGE BOARDED |
| 3 | M.C.T.D. | | |
| | USED SUBJECT TO BYE-LAWS | | |
| 4 | FARE | PAID | |
| | SERVICE | | 53 |
| | | | MACHINE NO 1022 |

WHERE THE



AUTOWAYBIL

IS MADE



Aerial View of the Woolwich Works of Siemens Brothers & Co., Limited.

Every product bearing our name has the backing of our great Woolwich Works which covers an area of over 27 acres, and has manufacturing facilities not excelled anywhere else in the world.

Contractors to the Admiralty, the War Office, the India Office, the Post Office, the Office of Works, the Crown Agents for the Colonies, the British, Colonial, and Foreign Telephone Administrations, Railways, etc.

SIEMENS BROTHERS & CO., LIMITED.

Telegrams : SIEMENS, WOOLWICH.

WOOLWICH, LONDON, S.E. 18

Telephones : WOOLWICH 1161.

AUTOWAYBIL
TICKET ISSUING MACHINE

(Patents applied for.)



Autowaybil in use showing small size.

AUTOWAYBIL
TICKET ISSUING MACHINE

(Patents applied for.)

INTRODUCTION.

Passenger traffic nowadays demands a performance far in advance of what was considered satisfactory a few years ago. As the speed and carrying capacity of vehicles has been increased from year to year, so the problem of issuing tickets has become more and more acute, and methods, which at one time were economical and satisfactory, are now far too slow and expensive to meet the changed conditions.

In view of these changes, attention has become increasingly focussed on the various systems available for the collection of fares in passenger transport vehicles, and the problem of facilitating the work of the conductor, and the staff of ticket check departments.

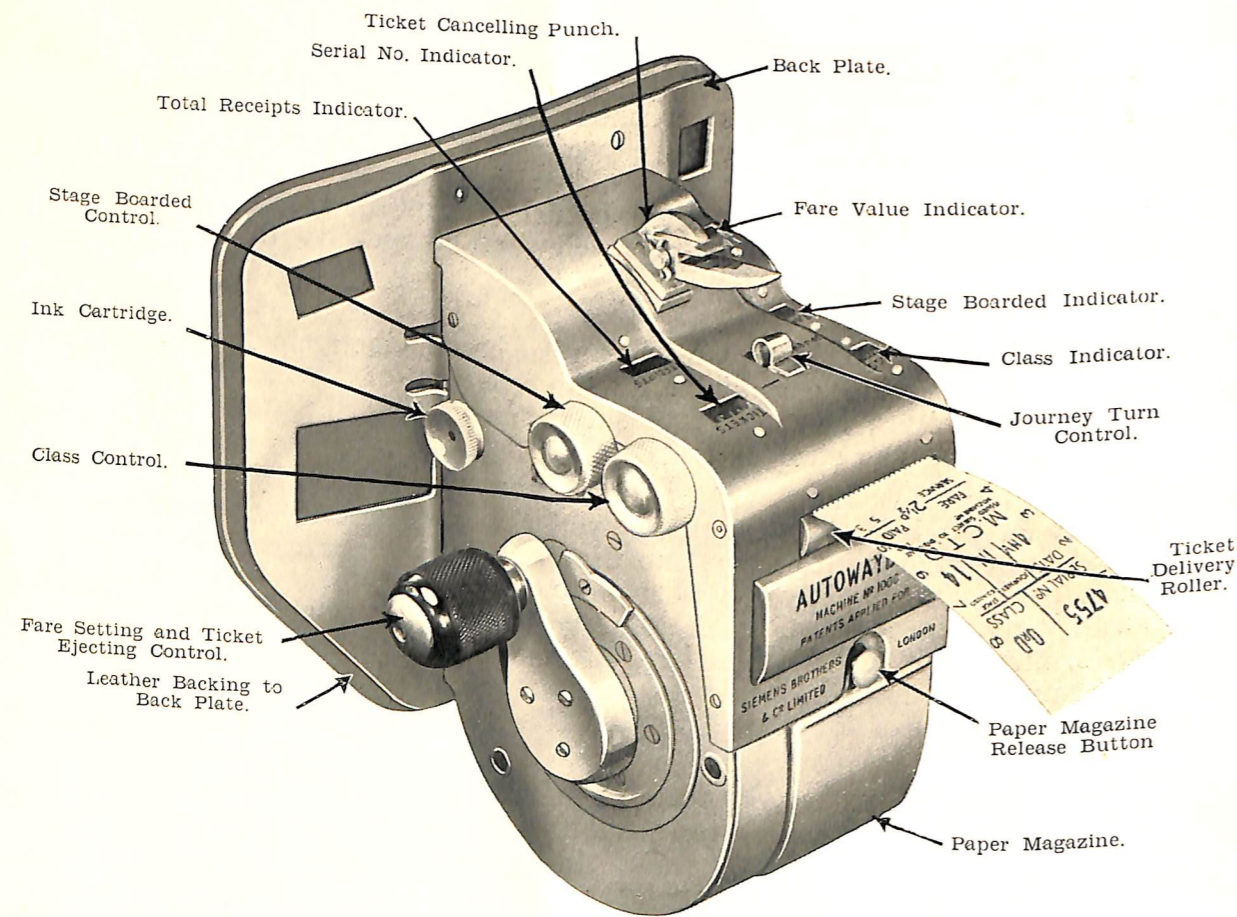
It is, we believe, generally agreed that the best solution of the problem is some form of machine which will print, audit, and deliver, both easily and rapidly, any denomination of ticket required. With such a machine, a considerable saving is effected not only in material costs, but the maintaining of large stocks of printed tickets of various denominations, and the heavy expenditure of maintaining a large staff for the purpose of ticket and waybill checking is abolished.

We have, therefore, applied ourselves to the development of a machine of this type, and after a number of years of experimental and research work, including a careful study of the requirements of the various municipalities and passenger transport companies, have produced the "Autowaybil" Ticket Printing and Issuing Machine described herein.

The most important requirements of a ticket issuing machine are that it must be capable of issuing the various classes of tickets rapidly and reliably. It must also be of compact dimensions, light in weight, simple to operate, and economical both in first cost and maintenance.

The Autowaybil meets all these requirements, and in addition has many other advantages which are set out in the following pages.

AUTOWAYBIL TICKET ISSUING MACHINE



General Arrangement of Autowaybil.

AUTOWAYBIL TICKET ISSUING MACHINE

DESCRIPTION.

As will be seen from the illustrations, the Autowaybil is of very simple yet pleasing appearance. It is easily cleaned, and there are no crevices or hollows to retain dust and dirt. All the external surfaces are of a special aluminium alloy which is hard and non-corrosive.

All readings are taken through windows in the top cover, and apart from the journey IN/OUT button and cancelling punch, all the controls are on the right-hand side of the machine. The knobs are amply proportioned and are easy to operate even when the operator is wearing thick gloves.

The ticket is ejected horizontally by the delivery roller in the front of the machine.

The simplicity and efficiency of the cancelling punch is unique. It consists of the punch, the die, and the spindle connecting the two parts together. It is so constructed that to operate it the conductor takes the ticket between his thumb and forefinger, slides it on to the punch anvil so that the tapered part of the latter slides between the ticket and his forefinger, gives his hand a slight twist and the punch is operated without releasing his hold of the ticket and without using the other hand. Should it ever require sharpening, it is a matter of seconds to withdraw the pin and touch up the punch face only with an oilstone.

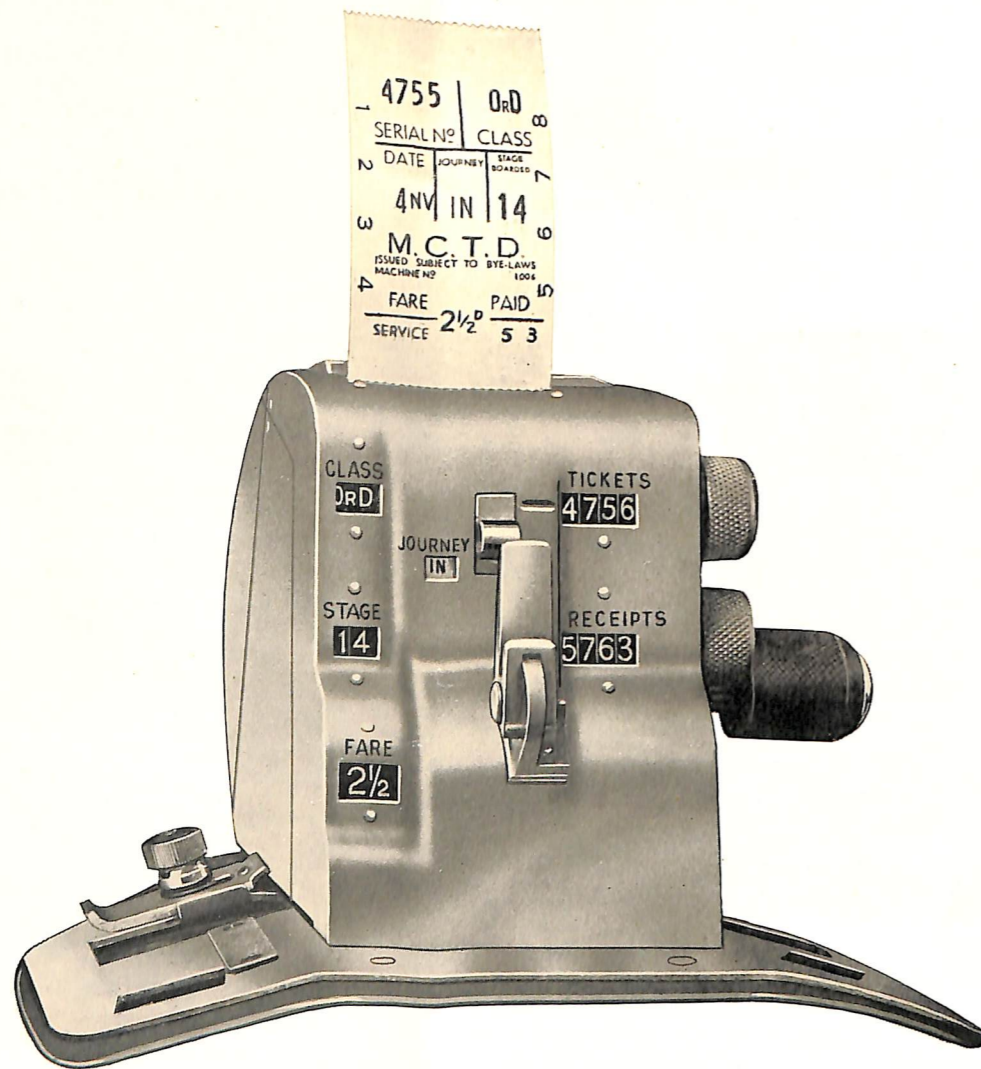
OPERATION.

The machine is extremely simple to operate, a few minutes tuition only being necessary for efficient manipulation.

Of the two small knobs on the top right-hand side of the machine, the outer one controls the "Class" while the inner one controls the "Stage Boarded."

A novel and important feature of the machine is the dual purpose handle. This handle is depressed and rotated to set the "Fare" and then turned on its own crank to print and issue the ticket.

It will be readily appreciated that this feature greatly accelerates the speed of issue of the machine.



Autowaybil as viewed by the operator, showing the clear view of the indicators and the tickets issued.

TICKETS.

The layout of the ticket is plain and bold, and the variable factors are in heavy type to ensure that they can be quickly and easily read.

A facsimile of a ticket is attached below, the measurements being $2\frac{3}{4}$ inches long by $1\frac{1}{2}$ inches wide.

As the illustrating of a list of tickets bearing the complete range of combinations obtainable would involve too much space, the range of each variable is given below:—

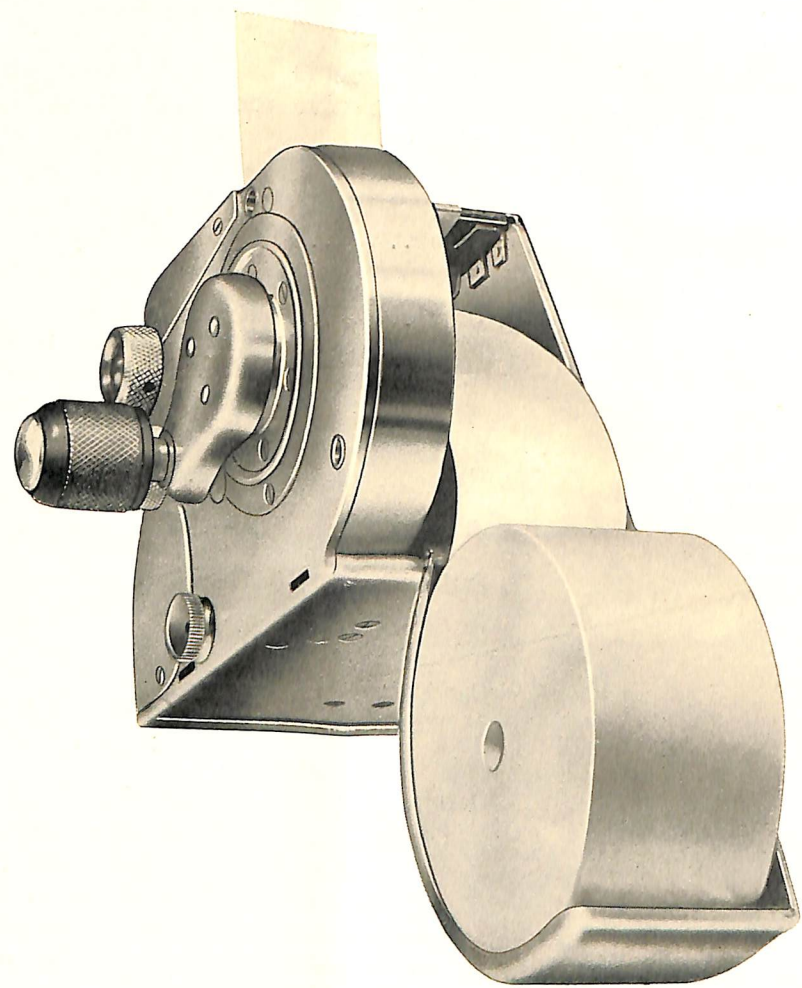


- a. Fare 1 to 18 units. Id. to 1/6d. or 1/2d. to 9d. or similar series.
- b. Class 8 Classes, e.g., OrD (ordinary), ReT. (return), MD. (midday), TrF. (transfer), MiS. (miscellaneous), EX. (exchange), WkR. (workman), CH. (child).
- c. Stage Boarded 0 to 99.
- d. Journey .. IN — OUT.
- e. Serial No. .. 0-9999 Non-zeroising.
- f. Date Day and month.
- g. Service .. Any number required on quickly detachable metal button in printing plate.
- h. Constant Data Conditions of Sale, Machine No., etc., to suit requirements.

All settings remain as last set with the exception of the Serial No., which is progressive, thereby allowing the issue of repeat tickets. The "TICKETS" indicator displays the serial number of the next ticket to be issued, thus facilitating check by inspectors.

The setting of the various printing wheels takes place as follows:—

- Set at Depot *f* and *g*.
- Set by operator in service .. *a*, *b*, *c* and *d*.



Autowaybil without back plate and with paper magazine open, showing the large size of the paper roll.

FEATURES.

Ease and Speed of Operation.

The Autowaybil has been so designed that it can be fully operated by the right hand alone. The major operations are by two knobs only, one being the "Class" and the other the "Fare" setting. The same knob that controls the fare selection also operates the mechanism for ejecting the ticket.

Economy.

The initial price is so moderate that in most cases the saving between the cost of blank paper rolls and printed tickets soon pays for it.

It is not necessary to use a special or proprietary type of paper, any good commercial quality of the correct width being suitable.

Reliability.

The Autowaybil is made throughout at our Woolwich Works which for many years has been engaged in the production of precision apparatus and mechanisms demanding maximum reliability in service. Our experience and manufacturing facilities are therefore unexcelled for this class of work.

In addition, the design is basically simple and robust, the parts subject to wear being very amply proportioned and the number of moving parts reduced to an absolute minimum.

Flexibility.

It is possible to obtain 144 different ticket combinations between "Class" and "Fare" alone, apart from use being made of the cancelling punch for "Returns."

Size and Weight.

The exceptionally compact dimensions of the machine may be gauged from the illustrations. Excluding the belt and back plate, the depth from back to front is only $4\frac{1}{8}$ inches, the width is $2\frac{3}{4}$ inches excluding the control knobs, and the height $6\frac{3}{8}$ inches including the cancelling punch which is mounted on the top cover. **The total weight fully loaded and complete with harness is only $2\frac{1}{2}$ pounds.**

Capacity.

The capacity of the machine with paper normally used is approximately 600 tickets. If a thin paper is used, however, it is possible to accommodate about 1,000 tickets per roll.

Fraudproof.

It is impossible to interfere with the mechanism in any way whatsoever without breaking the seals, and the whole counting and printing mechanism is locked before and during the printing of each ticket.

Convenience.

All readings are bold and are taken from the top of the machine. Also the ticket is so ejected that not only is the printed side uppermost, but all matter printed on the ticket is perfectly legible to the operator before detachment from the machine.

Each machine is supplied complete with its own strong japanned steel case. This case contains the machine, harness and a spare roll of paper.

Service.

We are in an exceptionally good position to give service when required as we have a very efficient service organisation covering practically the whole of the British Isles in connection with the maintenance of our automatic telephone and traffic control apparatus.

In addition, the mechanism is divided into a number of units arranged so as to be readily replaceable in the very unlikely event of a failure.

Self-Auditing.

The Autowaybil is entirely self-auditing. It not only records the total number of tickets issued, but also the total cash receipts (displayed in "Units") for them.

Printing Ink.

Printing ink is supplied to the machine by a quickly detachable absorbent cartridge.

Maintenance.

Very little maintenance is required apart from the daily date setting and inking. The mechanism should, of course, be lubricated occasionally where shown on the maintenance chart, and the paper dust that has accumulated brushed or blown out. The printing faces should be cleaned with a small bristle brush, in a similar manner to the way in which a typewriter is cleaned, when it becomes clogged.

SIEMENS BROTHERS & CO., LTD.

Registered Office: CAXTON HOUSE, WESTMINSTER, LONDON, S.W. 1

Telegrams: "SIEMENS, PARL, LONDON."

Telephone: WHITEHALL 2461.

General Offices and Works: WOOLWICH, LONDON, S.E. 18

Telegrams: "SIEMENS, WOOLWICH."

Telephone: WOOLWICH 1161.

Offices for Marine Apparatus and Wireless Telegraphy

| | 2, Wood Street. | Telegrams: | Telephones: |
|-----------------------|-----------------------------------|--|----------------------|
| CARDIFF. | 144, St. Vincent Street. | "SIEMENS, CARDIFF." | 7128/9. |
| GLASGOW, C. 2. | 56 & 60, South John Street. | "SIEMENS, 144, St. Vincent Street, GLASGOW." | CENTRAL 5807. |
| LIVERPOOL. | "K" Exchange Buildings, Quayside. | "SIEMENS, LIVERPOOL." | CENTRAL 2264 & 5154. |
| NEWCASTLE-ON-TYNE, 1. | | "SIEBROMAR, NEWCASTLE-ON-TYNE." | 24922. |

Home Representation

SIEMENS ELECTRIC LAMPS AND SUPPLIES LIMITED, at the following addresses:—

| | 80, King Street. | Telegrams: | Telephones: |
|----------------------------|---------------------------------------|-------------------------------|----------------------|
| BELFAST. | Siemens House, 8 & 10, Albert Street. | "SIEMENS, BELFAST." | 6157/8. |
| BIRMINGHAM. | 10-12, Marsh Street. | "SIEMENS, BIRMINGHAM." | MIDLAND 0072/3. |
| BRISTOL. | 2, Wood Street. | "SIEMENS, BRISTOL." | 23545. |
| CARDIFF. | 25, Cadogan Street. | "SIEMENS, CARDIFF." | 7128/9. |
| GLASGOW, C. 2. | 54, Wellington Street. | "SIEMENS, GLASGOW." | CENTRAL 2820/1. |
| LEEDS, 1. | 56 & 60, South John Street. | "SIEMENS, LEEDS." | 27395. |
| LIVERPOOL, 1. | 38-39, Upper Thames Street. | "SIEMENS, LIVERPOOL." | CENTRAL 2264 & 5154. |
| LONDON, E.C. 4. | 10 & 12, Gateaton Street. | "SIEMOTOR, CENT. LONDON." | CENTRAL 2332. |
| MANCHESTER. | 44A, Westgate. | "SIEMENS, MANCHESTER." | BLACKFRIARS 7451/2. |
| NEWCASTLE-ON-TYNE, 1. | 4, Castle Boulevard. | "SIEMENS, NEWCASTLE-ON-TYNE." | 20641. |
| NOTTINGHAM. | 57-59, West Street. | "SIEMENS, NOTTINGHAM." | 3110. |
| SHEFFIELD. | 46, High Street. | "SIEMENS, SHEFFIELD." | 25259. |
| SOUTHAMPTON. | | "SIEMENS, SOUTHAMPTON." | 3803. |
| DUBLIN (Irish Free State). | 52, William Street, C. 1. | "SIEMENS, DUBLIN." | 21354/5. |

Representation Abroad

| | Siemens Brothers & Co. (British), Ltd. | 6, Loop Street (P.O. Box 3139) | Telegrams. | Telephones: |
|--|---|-----------------------------------|--------------------------|----------------|
| CAPE TOWN. | " " " " | Alliance Buildings, | "SIEMENS, CAPE TOWN." | 2-6903. |
| DURBAN. | " " " " | 17, Gardiner Street | "SIEMENS, DURBAN." | CENTRAL 3311. |
| JOHANNESBURG. | " " " " | (P.O. Box 2369). | | |
| PORT ELIZABETH. | W. D. Hearn & Co. | Calcutta House, | "SIEMENS, JOHANNESBURG." | 33-5411. |
| NORTHERN & SOUTHERN RHODESIA and PORTUGUESE EAST AFRICA. | Allen, Wack & Shepherd. | c/r Loveday & Anderson Sts. | | |
| | " " " " | (P.O. Box 7404). | | |
| | " " " " | Kemp Street (P.O. Box 569). | "ROTAROL" PORT ELIZABETH | 5126. |
| | " " " " | Ezulwayo (P.O. Box 322). | "THAINE, BULAWAYO." | — |
| | " " " " | Salisbury (P.O. Box 586). | "THAINE, SALISBURY." | — |
| | " " " " | N'Dola (P.O. Box 9). | "THAINE, N'DOLA." | — |
| | " " " " | Beira (P.O. Box 270). | "THAINE, BEIRA." | — |
| | " " " " | Lourenco Marques | "THAINE | — |
| | " " " " | (P.O. Box 2). | "LOURENCO MARQUES." | — |
| CALCUTTA. | Siemens Brothers & Co., Ltd. | Clive Buildings, 8, Clive Street. | "SIEMENS, CALCUTTA." | 3923/4. |
| BOMBAY. | " " " " | Graham Road., Ballard Estate | "SIEMENS, BOMBAY." | 26221/2. |
| | " " " " | (P.O. Box 752). | | |
| MADRAS. | The English Electric Co., Ltd. | 28, General Patters Road. | "ENELECTICO, MADRAS." | 3997. |
| COLOMBO. | Walker, Sons & Co., Ltd. | P.O. Box 166). | | |
| SIAM. | Anglo-Siam Corporation, Ltd. | Bangkok. | | |
| MALAYA. | Sime, Darby & Co., Ltd. | Singapore. (P.O. Box 595). | "SIMIT, SINGAPORE." | — |
| | Also at Penang, Ipoh, Kuala Lumpur, Malacca, etc. | | | |
| SHANGHAI. | Societe Francaise des Telephones Interurbains. | Arnhold Building, | "TEINT, SHANGHAI." | 14834. |
| MELBOURNE. | Siemens (Australia) Proprietary, Ltd. | 320, Szechuen Road. | "SIEMENS, MELBOURNE." | M 4741. |
| SYDNEY. | " " " " | 189-191, William Street | "SIEMENS, SYDNEY." | M 4161. |
| BRISBANE. | " " " " | (G.P.O. Box 4328). | "SIEMENS, BRISBANE." | B 2468. |
| ADELAIDE. | " " " " | 257, Clarence Street | "SIEMENS, ADELAIDE." | CENTRAL 2468. |
| PERTH (W.A.). | H. C. Little & Co., Ltd. | (G.P.O. Box 62A). | "LITELECTRA, PERTH." | B 7148. |
| NEWCASTLE, N.S.W. | Mr. F. H. Fearon. | 85, Grenfell Street | | NEWCASTLE 910. |
| WELLINGTON, N.Z. | Cory-Wright & Salmon, Ltd. | (G.P.O. Box 349C). | | |
| | " " " " | 858, Hay Street | "CORYSAL, WELLINGTON." | 43-172. |
| | " " " " | (G.P.O. Box D154). | | |
| | " " " " | 45, Watt Street | "CORYSAL, AUCKLAND." | 43-394. |
| | " " " " | (G.P.O. Box 220B). | | |
| | " " " " | Dominion Farmers' Institute, | "SIEMENS, WINNIPEG." | — |
| | " " " " | Featherston Street | "ENELECTICO, RIO." | 24-6414. |
| | " " " " | (G.P.O. Box 1230). | "SKILFUL, CAIRO." | 46577. |
| AUCKLAND, N.Z. | " " " " | Gane Buildings, | | |
| | " " " " | Anzac Avenue, | | |
| | " " " " | (G.P.O. Box 1650). | | |
| WINNIPEG. | Siemens Brothers (Canada), Ltd. | Stobart Building, | | |
| RIO DE JANEIRO. | The English Electric Co., Ltd. | 281, McDermot Avenue. | | |
| CAIRO. | His Excellency M. Ahmed Abboud Pasha. | 22, Avenida Rio Branco | | |
| | " " " " | (Caixa Postal 1361). | | |
| | " " " " | Baehler-Savoy Building, | | |
| | " " " " | Block B, Sharia Kasr-el-Nil | | |
| | " " " " | (P.O. Box 2051). | | |
| MALTA. | Muscat's General Stores. | 270, Strada Reale, Valletta. | | |
| NANTES. | Mr. Herbert Kerr. | 8, Rue de l'Heronniere. | "HERBERKERR, NANTES." | 140-54. |
| THE HAGUE. | Internationale Nautische Handel-Maatschappij. | Korte Voorhout 13. | "INHAM, THE HAGUE." | Haag 112134. |
| BRIDGEPORT, Conn., U.S.A. | Alex. McNab. | Sport Hill. | "MCNAB, BRIDGEPORT." | 5-6421. |