

BALLARAT TRAMWAYS. (1929)

PLACES OF INTEREST, ETC. ON VARIOUS ROUTES.

GARDENS via CONVENT.—Hospital, Benevolent Home, City Oval, Ballarat College, St. Patrick's College, R.C. Bishop's Palace, Victoria Park Reserve, Loretto Abbey, Arch of Victory and Golf Links, Ballarat High School, Cattle Yards, Lake Wendouree, Botanical Gardens, Fish Acclimatisation Society, Zoo, Statuary Pavilion.

GARDENS via RIPON STREET.—Hospital, City Oval, Lake Wendouree, View Point, Boat Sheds, Nazareth House, Show Grounds, C. of E. Grammar School, C. of E. Bishop's Court, Zoo, Botanical Gardens, Statuary Pavilion, Fish Acclimatisation Society.

DRUMMOND STREET NORTH.—Hospital, Old Cemetery, Railway Workshops, Lake Wendouree, Show Grounds.

LYDIARD STREET NORTH. — Railway Station, Black Hill, Myers Mills, Marley's Mills, New Cemetery, North Golf Links.

RUBICON STREET ONLY. — To City Boundary. Hospital, Benevolent Home Sunnyside Mills, Miners' Racecourse.

SEBASTOPOL. — Hospital, Benevolent Home, Sunnyside Mills, Racecourse, Old Mining Sites, St. Joseph's Home.

ORPHANAGE.—St. Alipius' Presbytery, Curiosity Shop, Orphanage, Eureka Stockade.

MT. PLEASANT.—Golden Point, Sovereign Hill Lookout, Municipal Observatory.

TRAM TIME-TABLE. (From City).

GARDENS via CONVENT.

Day—Green Disc. Night—Green Light.
FROM GRENVILLE STREET (City).
MONDAYS to SATURDAYS.

7.30 a.m., 8 a.m., and every 30 minutes (on each hour and half hour) until 12 noon. Then every 20 minutes (on each hour, and 20 and 40 minutes past until 8 p.m.). Friday nights, 9.0 p.m. Then 8.0, and every 30 minutes on each hour and half hour until 10.30 p.m., 10.40 p.m., 11.5 p.m. Last tram, 11.20 p.m.

SUNDAYS

Car meets excursion trains from Melbourne due in at 11.45 and 12.15 p.m. for convenience of visitors.

Regular service from city commences at 2.0 pm, then every 20 minutes (on each hour, 20 and 40 minutes past) until 8.0 p.m., then every 30 minutes (on each hour and half hour) until 9.30 p.m., 10.5 p.m. Last tram 10.20 p.m.

MOTOR TIME-TABLE.

BALLARAT — DAYLESFORD

J. LITTLEHALES.

Leaves Barlow's, Lydiard Street, Daily, 4 pm, arrives Daylesford 4.45 pm.

Leaves Daylesford Daily 9.15 am, arrives Ballarat 10.45 am.

Visit the Mineral Springs at Daylesford.

BALLARAT TRAMWAYS. (1929)

PLACES OF INTEREST, ETC. ON VARIOUS ROUTES.

GARDENS via CONVENT.—Hospital, Benevolent Home, City Oval, Ballarat College, St. Patrick's College, R.C. Bishop's Palace, Victoria Park Reserve, Loretto Abbey, Arch of Victory and Golf Links, Ballarat High School, Cattle Yards, Lake Wendouree, Botanical Gardens, Fish Acclimatisation Society, Zoo, Statuary Pavilion.

GARDENS via RIPON STREET.—Hospital, City Oval, Lake Wendouree, View Point, Boat Sheds, Nazareth House, Show Grounds, C. of E. Grammar School, C. of E. Bishop's Court, Zoo, Botanical Gardens, Statuary Pavilion, Fish Acclimatisation Society.

DRUMMOND STREET NORTH.—Hospital, Old Cemetery, Railway Workshops, Lake Wendouree, Show Grounds.

LYDIARD STREET NORTH. — Railway Station, Black Hill, Myers Mills, Marley's Mills, New Cemetery, North Golf Links.

RUBICON STREET ONLY. — To City Boundary. Hospital, Benevolent Home Sunnyside Mills, Miners' Racecourse.

SEBASTOPOL. — Hospital, Benevolent Home, Sunnyside Mills, Racecourse, Old Mining Sites, St. Joseph's Home.

ORPHANAGE.—St. Alipius' Presbytery, Curiosity Shop, Orphanage, Eureka Stockade.

MT. PLEASANT.—Golden Point, Sovereign Hill Lookout, Municipal Observatory.

TRAM TIME-TABLE. (From City).

GARDENS via CONVENT.

Day—Green Disc. Night—Green Light.
FROM GRENVILLE STREET (City).
MONDAYS to SATURDAYS.

7.30 a.m., 8 a.m., and every 30 minutes (on each hour and half hour) until 12 noon. Then every 20 minutes (on each hour, and 20 and 40 minutes past until 8 p.m.). Friday nights, 9.0 p.m. Then 8.0, and every 30 minutes on each hour and half hour until 10.30 p.m., 10.40 p.m., 11.5 p.m. Last tram, 11.20 p.m.

SUNDAYS

Car meets excursion trains from Melbourne due in at 11.45 and 12.15 p.m. for convenience of visitors.

Regular service from city commences at 2.0 pm, the nevery 20 minutes (on each hour, 20 and 40 minutes past) until 8.0 p.m., then every 30 minutes (on each hour and half hour) until 9.30 p.m., 10.5 p.m. Last tram 10.20 p.m

MOTOR TIME-TABLE.

BALLARAT — DAYLESFORD J. LITTLEHALES.

Leaves Barlow's, Lydiard Street, Daily.
4 pm, arrives Daylesford 4.45 pm.

Leaves Daylesford Daily 9.15 am, arrives Ballarat 10.45 am.

Visit the Mineral Springs at Daylesford.

GARDENS via RIPON STREET.

Day—Red Disc. Night—Red Light
FROM GRENVILLE STREET (City).

MONDAYS to SATURDAYS.

8.15 a.m. and every 30 minutes (on 15 and 45 minutes past each hour) till 11.45 am, then 12.5, 12.30, 12.50, 1.5, 1.30 and every 20 minutes (on 10, 30 and 50 minutes past each hour) until 7.50 p.m. Friday 8.50 pm; then 8.15 pm and every 15 minutes (on 15 and 45 minutes past each hour), until 10.45 pm, and last car 11.10 pm to depot only.

SUNDAYS.

2.10 pm and every 20 minutes (at 10, 30 and 50 minutes past each hour) until 7.50 pm; then 8.15, 8.45 pm, and 9.15, 9.45 and 10.10 pm cars to depot only.

DRUMMOND STREET NORTH.

Day—White disc. Night—White light.

FROM GRENVILLE STREET (City).

MONDAYS to FRIDAYS.

8.3 a.m. and every 30 minutes (at 3 and 33 minutes past each hour) to 2.3 p.m. Then 2.18 and every 15 minutes (at 3, 18, 33 and 48 minutes past each hour) to 6.3 pm. (Fridays 9.18 pm). Then every 30 minutes (at 3 and 33 minutes past each hour) to 10.3 pm. Then 10.40, 11.3, and 11.20 pm, last car.

SATURDAYS.

8.3 am and every 30 minutes (at 3 and 33 minutes past each hour) to 7.3 p.m.; then 7.18, 7.33, 7.48, and 8.3 pm, and then as usual.

SUNDAYS.

2.33 pm, and every 30 minutes (at 3 and 33 minutes past each hour) to 10.3 p.m.; last tram 10.20 pm.

LYDIARD STREET NORTH.

Day—Amber disc. Night—Amber light.
FROM GRENVILLE STREET (City).

MONDAYS to FRIDAYS.

7.40 am and every 20 minutes (at each hour and 20 and 40 minutes past) till 11.40 am, then 11.54 and every 12 minutes (at 6, 18, 30, 42, and 54 minutes past each hour) till 7.30 pm. Friday night 9.30 pm. Then 7.40 and every 20 minutes (at each hour and 20 and 40 minutes past till last car at 11.0 pm.

SATURDAYS.

Same as Monday to Thursday to 10.40 pm. Then 11.6 am and every 12 minutes (at 6, 18, 30, 42 and 54 minutes past each hour) till 2.30 pm. Then 2.40 and every 20 minutes (on each hour and 20 and 40 minutes past) till 5.40 pm. Then 6.6 pm and every 12 minutes (at 6, 18, 30, 42 and 54 minutes past each hour) till 7.30 pm. Then 7.40 and every 20 minutes (on each hour and 20 and 40 minutes past) till last car at 11.0 pm.

SUNDAYS.

2 pm and every 20 minutes on each hour and 20 and 40 minutes past) till last car at 10.0 pm.

MONASTERY BUS SERVICE.

To Ronaldson and Tippetts, Northern Oval, North Brickworks, Gardens, Lake, and Woollen Mills.

W. WILSON, Howitt, St., Wendouree.

Leaves City 11.5, 12.3, 1.5, 2.5, 3.5, 4.5, 5.5, and 6.5 pm.

Leaves Monastery 8.0 am, 10.35, 11.35, 12.35 pm, 1.35, 2.35, 3.35, 4.35, 5.35.

Friday Nights.—Leaves City 8.30, 9.10, 10.45 pm. Leaves Monastery 7.15 pm.

Saturday Nights.—Leaves City 10.45 pm. Leaves Monastery, 7.15 pm.

RUBICON STREET ONLY.

Day→Blue disc. Night—Blue light.

FROM GRENVILLE STREET (City).

MONDAYS to FRIDAYS.

From Car Depot, 6.25 am and 6.45 am.

From Hospital Corner, 6.35 am, 6.55 am.

From City, 7.8 am, and every 20 minutes (at 8, 28 and 48 minutes past the hour) to 8.28 am; then 8.50 am and every 20 minutes (at 10, 30 and 50 minutes past each hour) to 11.50 am. Then 12 noon, 12.13 and 12.22 pm, and every 12 minutes (at 10, 22, 34, 46 and 58 minutes past each hour) till 7.34 pm. Friday nights 9.34 pm. Then 7.50 pm, and every 20 minutes (at 10, 30 and 50 minutes past each hour) until last car at 10.50 pm.

SATURDAYS.

Same as Monday to Thursday to 11.30 am. Then 11.46 am and every 12 minutes (at 10, 22, 34, 46 and 58 minutes past each hour) till 2.34 pm. Then 2.50 pm, and every 20 minutes (at 10, 30 and 50 minutes past each hour) till 6.10 pm. Then 6.22 and every 12 minutes (at 10, 22, 34, 46 and 58 minutes past each hour) till 7.34 pm. Then 7.50 pm and every 20 minutes (at 10, 30 and 50 minutes past each hour) till last car at 10.50 pm.

SUNDAYS.

Cars meet Melbourne trains due in at 11.45 and 12.15 pm. Regular Service commences at 2.10 pm from City. Then every 20 minutes (at 10, 30 and 50 minutes past each hour) till 9.50 pm. Car meets Ballarat train due in at 10.10 pm from Melbourne.

RUBICON STREET ONLY.

FROM RUBICON STREET.

(To City)

MONDAYS TO FRIDAYS.

Day—Blue Disc. Night—Blue Light.

7.4 am, and every 20 minutes to 8.44 am, then 9.6 am, and every 20 minutes on 6, 26 and 46 minutes past each hour to 12.6 pm., then 12.14 and every 12 minutes (at 2, 14, 26, 38 and 50 minutes past each hour) till 7.50 pm. Friday nights every 12 minutes to 9.50 pm. Then 8.6 pm, and every 20 minutes at 6, 26 and 46 minutes past each hour till 11.6 p.m. Last car to City 11.26 pm, last car runs direct via Drummond Street North to Car Depot.

SATURDAYS.

Same as Monday to Friday to 11.46 am, then 12.2 pm, and every 12 minutes (at 2, 14, 26, 38 and 50 minutes past each hour) till 2.50 pm, then 3.6 and every 20 minutes (at 6, 26 and 46 minutes past each hour) till 6.26 pm. Then 6.38, 6.50, 7.2, 7.14, 7.26, 7.38, 7.50 pm, 8.6 pm, and every 20 minutes (at 6, 26, and 46 minutes past each hour) till 11.6 pm). Last car to City 11.26 pm; Car runs direct via Drummond Street North to Car Sheds.

SUNDAYS.

2.26 pm and every 20 minutes (at 6, 26 and 46 minutes past each hour) till 10.6 p.m. Last Car to City, 10.26 p.m. Last Car runs direct via Drummond Street Nth. to Car Sheds.

SEBASTOPOL.

Day—Blue Disc with White Centre.
Night—Blue Light.

From Depot, 6.25 am, 6.45 am.

From Hospital, 6.35 am, 6.55 am.

From Grenville Street City), 7.8 am, and every 20 minutes (at 8, 28 and 48 minutes past each hour) till 8.28 am; then 8.50 am and every 20 minutes (at 10, 30 and 50 minutes past each hour) to 11.50 am. Then 12.13 pm, 12.34 pm and every 24 minutes to 7.22 pm. (Friday nights 9.34 pm). Then 7.50 pm and every 20 minutes (at 10, 30 and 50 minutes past each hour) till last car at 10.50 pm.

SATURDAYS.

Same as Monday to Friday to 11.30 am. Then 12 noon, 12.22 pm and every 24 minutes to 2.2 pm. Then 2.50 pm and every 20 minutes at 10, 30 and 50 minutes past each hour) until 6.10 pm, then 6.34, 6.58, 7.22 and 7.50 pm. Then every 20 minutes (at 10, 30 and 50 minutes past each hour) till last car 10.50 pm.

SUNDAYS.

Car meets excursion trains from Melbourne due in at 11.45 and 12.15 p.m. for convenience of visitors.

Regular service commences at 2.10 pm from City; then every 20 minutes (at 10, 30 and 50 minutes past each hour) till 9.50 pm. Car meets Ballarat train due in at 10 pm from Melbourne.

TULLOCH & KING, Pty. Ltd.
For Your Printing Order.

SEBASTOPOL.

(To City)

Day—Blue Disc with White Centre.

Night—Blue Light.

MONDAY TO FRIDAYS.

6.55 am, and every 20 minutes till 8.35 am, then 8.57 am, and every 20 minutes (at 17, 37, and 57 past each hour) till 12.17 pm, then 12.40 pm and every 24 minutes to 7.52 pm. Friday nights, 9.40 pm. Then 8.17 pm, and every 20 minutes (on 17, 37 and 57 minutes past each hour) till 10.57 pm. Last car to City, 11.17 pm. Last Car runs direct via Drummond Street North to Car Sheds.

SATURDAYS.

Same as Monday to Friday till 11.37 am, then 12.4 pm, and every 24 minutes to 2.52 pm, then 3.17 pm, and every 20 minutes (on 17, 37 and 57 minutes past each hour) till 6.37 pm, then 7.4 pm, 7.28, 7.52 and 8.17 pm, and every 20 minutes (on 17, 37 and 57 minutes past each hour) to last car to City 10.57 pm. Last car at 11.17 pm runs via Drummond Street North direct to Car Sheds.

SUNDAYS.

2.17 pm, and every 20 minutes (at 17, 37 and 57 minutes past each hour) till last car to City at 9.57 pm. Last car at 10.17 pm runs direct to Car Sheds via Drummond Street North.

ORPHANAGE.

Day—Green disc. Night—Green light.
FROM BRIDGE STREET (Ballarat East)

MONDAYS to FRIDAYS.

7 am, 7.30 am, and every 20 minutes (at 10, 30 and 50 minutes past each hour) till 9.30 am. Then 10 am, and every 20 minutes (at each hour, 20 and 40 minutes past, till 11.40 am. Then from Doveton Street 12.2, Grenville Street 12.5 and 12.30 pm; Station 1.2 pm; Grenville Street 1.5 pm and 1.30 pm, 1.48 pm and every 12 minutes (on each hour, 12, 24, 36 and 48 minutes past, till 6.12 pm. Friday nights every 12 minutes to 9.12 pm. Then 6.24, 6.50 and every 20 minutes (at 10, 30 and 50 minutes past each hour till last car at 10.50 pm.

SATURDAYS.

Same as Mondays to Fridays to 11 am, then every 12 minutes (on each hour and 12, 24, 36 and 48 minutes past) till 1.12 pm, then 1.25, 1.56 and every 20 minutes (at 10, 30 and 50 minutes past each hour till 6.50 p.m.; then 7 pm and every 12 minutes to 8 pm, then 8.36 and every 20 minutes (at 10, 30 and 50 minutes past each hour till last car at 10.50 pm

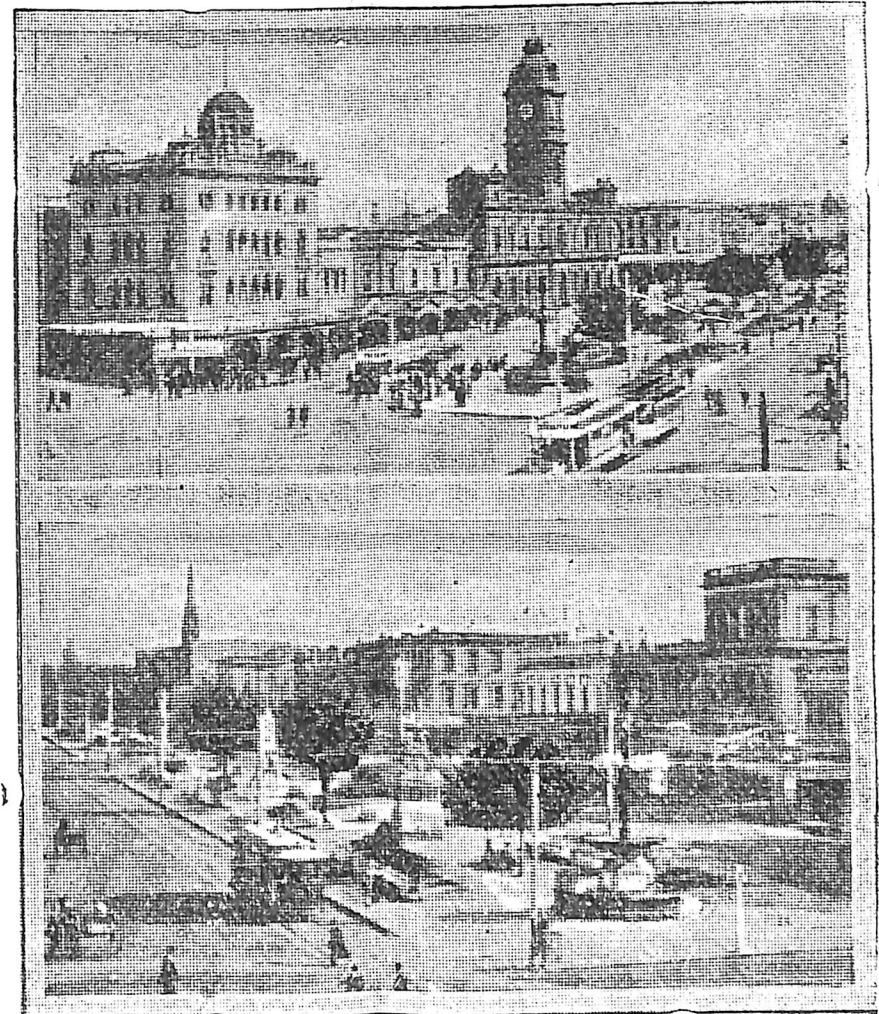
SUNDAYS.

2.10 pm and every 20 minutes (at 10, 30 and 50 minutes past each hour) till last car at 9.50 pm.

" MOCHA "

Rialto Buildings, Sturt Street,
Opp. City Hall.

For Hot Luncheon, Afternoon Tea,
Iced Coffee, Malted Milk, Fruit Salads, Ice
Creams, and Choice Summer Drinks.
Visitors Especially Catered For Sundays.
Spacious Comfortable Apartment.



TWO VIEWS OF STURT STREET.

MOUNT PLEASANT.

Day—Red disc. Night—Red light.
FROM BRIDGE STREET (Ballarat East)

MONDAYS to FRIDAYS.

8 am and every 20 minutes (on each hour, 20 and 40 minutes past till 11.40 am, then from Doveton Street 12.2, Bridge St. 12.5 and 12.30, Station 1.2, Bridge Street 1.5, 1.30, 1.48 and every 12 minutes (on each hour and 12, 24, 36 and 48 minutes past) till 6.12 pm; then 6.30 and every 20 minutes (at 10, 30 and 50 minutes past each hour) till last car at 10.50 pm. Friday nights 12 minutes service continues till 9.12 p.m.

SATURDAYS.

Same as Monday to Friday to 1.0 a.m.; then every 12 minutes (on each hour and 12.23 36, and 48 minutes past) till 1.24 Then 1.50 and every 20 minutes (at 10.30 and 50 minutes past each hour) till 6.50 p.m.; then 7.0 and every 12 minutes to 8.0 p.m.; then 8.30 p.m. and every 20 minutes (at 10.30 and 50 minutes past each hour till last tram at 10.50 p.m.

SUNDAYS.

2.10 pm, and every 20 minutes (at 10, 30 and 50 minutes past each hour) till last car at 9.50 pm.

MISSES LAMB

621 STURT STREET, BALLARAT.

BALLARAT SOUVENIRS, in Suede, China, and Celluloid, depicting the Scenery, etc.

ORIENTAL GOODS—Inspect our large stock of Imported Curios and Needlework.

Handsome Laces—Beautiful Designs.

Visitors are Invited to Inspect our Display.

PLACES TO VISIT IN BALLARAT.

Arch of Victory, Avenue of Honour, Gardens, Lake Wendouree, Statuary, Fish Hatcheries, Zoo, Eureka Stockade, Old Curiosity Shop, Sovereign Hill Lookout, Observatory, Black Hill Lookout, Gong Gong Reservoir, Lake Learmonth, Lake Burrumbet, Moorabool Reservoir, Violet Farm, Mount Buninyong.

And Andrews' Palace, 28 Armstrong St., where Hot Dinners Breakfast and Tea are supplied at 1/- Comfortable accommodation at Moderate Tariff. Phone 1788.

BALLARAT NORTH AND NEW CEMETERY MOTOR BUS SERVICE.

Via Doveton Street.

H. W. SMITH, Proprietor.

Monday to Friday.—Leaves New Cemetery 7.40, 10.30, 11.30 am, 12.40, 1.40, 2.20, 2.25, 3.30, 4.20, 4.50, 5.20. Leaves Grenville Street 8.0, 11.5 am, 12.5, 1.5, 2.5, 2.35, 3.5, 4.5, 4.35, 5.5, 6.5

Friday Nights—Leave New Cemetery at 7.20, Grenville Street at 9.5.

Saturday.—Leaves New Cemetery 10.30 and 11.30 am, 12.30 pm. Grenville Street 11.5 am, 12.5, 1.5 pm.

Saturday Night. — Cemetery 7.20 and after Pictures from City.

Sunday.—From 2.0 pm, and every half-hour till 6 pm.

Bus passes Mye strand Morleys Mills. Trips anywhere at lowest rates.

TRAM TIME-TABLE.
(To City).

**GARDENS via CONVENT to GRENVILLE
STREET (City).**

WEEK DAYS.

Leave Car Depot 6.35 am, 7.40 am, 8.5
am.

Leave Gardens Pavilion 6.45, 7.43, 8.10,
and 8.42 am, and every 30 minutes (at 12
and 42 minutes past each hour) to 12.12
pm. Then 12.20 pm and every 20 minutes
(on each hour, 20 and 40 minutes past) to
8.20 pm. Fridays 9 pm. Then 8.42 pm
and every 30 minutes (on 12 and 42 min-
utes past each hour to 10.42 pm, last car.

SUNDAYS.

2.20 pm and every 20 minutes (on each
hour and 20 and 40 minutes past) to 8
pm. Then 8.12 and every 30 minutes ((at
12 and 42 minutes past the hour to last
car at 9.12 pm.

**VICTORIA PARK via DOVETON
and EYRE STREET BUS SERVICE**
Mr. Robinson, Proprietor.

Leaves Victoria Park, 7.45 am, 8.45,
12.45 pm, 1.45, 2.15, 2.45, 3.40, 4.45, 5.15.

Leaves Grenville Street, 12 noon, 1 pm,
2.0, 2.30, 3.15, 4.0, 4.30, 5.0, 5.35, 6.5.

Wednesday Nights, Leaves Victoria Park
at 7.30. Return after Pictures.

Friday, Extra, Leaves Victoria Park 7.15
and 7.45 pm, Leaves Grenville Street 7.30
pm, 8.45, and 9.5, and after Pictures.

Saturday.—Leaves Victoria Park 8.45 a.
m., 10.30, 11.30, 12.15 pm, 7.30. Leaves
Grenville Street 10.15 am, 11.15, 12 noon,
1.5 p.m, and after Pictures.

STYLE — QUALITY — COMFORT

Are Striking Character-
istics of

“EMU” BRAND

FOOTWEAR

MANUFACTURED IN BALLARAT

Distinctive Productions in
Ladies' Pumps and “Flexo”
Shoes.

“EMU” BRAND FOOTWEAR for
Children, recognised the
Highest Grade in Australia.

A Trial will give Sure Satisfaction
and assist a Local Industry.

**ASK YOUR RETAILER TO SHOW
YOU THE “EMU” SHOE.**

SHOE REPAIRS WHILE U WAIT.

THE RAPID SHOE REPAIRERS.
731 STURT ST., and 9 PEEL ST.

The leading shops for all kinds of
repairs and crepe rubber soling.

ALL WORK GUARANTEED.

J. J. KIERGE PROP.

BALLARAT TEACHERS' COLLEGE.

Trains pupils for Primary Course and
Manual Arts Course.

This year 82 Students in training. Stu-
dents came chiefly from Ballarat and Dis-
trict, and Western Victoria.

Satisfactory provision for Private Board.

Historic Building, a Recreation Ground
adjacent to the College now being graded.

Staff:

Principal: Mr. W. H. Ellwood, M.A., M.Ed.

Lecturers:

Miss P. Hamano, M.A.

Mr. H. B. Jones, B.A.

GARDENS via RIPON STREET, to
GRENVILLE STREET (City).

WEEK DAYS.

Leave Car Depot 7.25 am, 8 am.

Leave Gardens Pavilion 8.22 am, and ev-
ery 30 minutes (at 22 and 52 minutes past
each hour)to 11.52 am, then 12.25 pm
and every 20 minutes (at 5, 25 and 45
minutes past each hour) to 7.45 pm. Fri-
day nights 9.22 pm. Then 8.22 pm and
every 30 minutes (at 22 and 52 minutes
past the hour) to 10.22 pm, last car.

SUNDAYS.

Leave Car Depot 1.40 pm, 1.50, 2.10 pm.

Leave Gardens Pavilion 2.25 pm and ev-
ery 20 minutes (at 5, 25 and 45 minutes
past the hour) till 7.45 pm, then 8.22 pm
and 8.52, and last car at 9.22 pm.

SOUTH STREET BUS SERVICE.

TO WESTERN OVAL AND RACECOURSE.

Leaves Adair Street 7.45 am, 8.45, 10.30,
12.45, 1.45, 2.15, 3.25, 4.45, 5.15 and 5.50
Pictures 7.30.

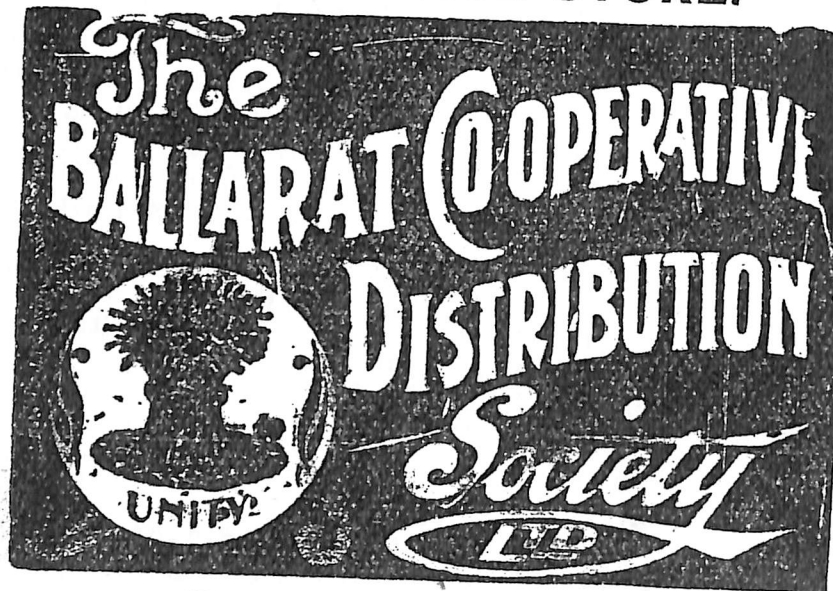
Pleasant Street, 7.48, 8.48, 10.33, 12.48,
1.48, 2.18, 2.45, 3.28, 4.48, 5.18. Pic-
tures 7.30 pm

Leaves Grenville Street, 12.5 pm, 1.5,
2.5, 2.30, 3.10, 3.40, 4.30, 5.5, 5.40, 6.5.

Friday.—Extra.—Adair Street at 7.10;
Pleasant Street 6.45 pm, 7.15, 7.40. Gren-
ville Street 7.0, 7.30, 8.30, 9.5, 9.50, 10.30

A. SPROULE, Junr., Proprietor.

**FOR QUALITY AND GOOD
VALUES SUPPORT YOUR
CO-OPERATIVE STORE.**



Phone **258** For

**BREAD, GROCERIES, BOOTS and SHOES,
FARM PRODUCE, FIREWOOD,
BRIQUETTES.**

Quality Goods at Lowest Prices.

108 URQUHART ST., BALLARAT

Branches at

18 Bridge Street; Cr. Lydiard and
Macarthur Streets.

Wood Depot: Wood Siding, Armstrong
Street North.

WINTER IS HERE !

We can supply you with FIRE-
WOOD and BRIQUETTES at Low-
est Rates.

**DRUMMOND STREET NORTH to
GRENVILLE STREET (City).**

MONDAY TO FRIDAY.

Leave Car Depot 6.45 am, 7.15, 7.25,
and 7.45 am.

Leave Wendouree Parade 6.48, 7.18, 7.28
and 7.48 am, then every 30 minutes (at
18 and 48 minutes past each hour) to 1.48
pm. Then 2.3 and every 15 minutes (at
3, 18, 33 and 48 minutes past the hour)
till 5.48 pm. Friday 9.3 pm. Then 6.18
pm and every 30 minutes as before till
9.48 pm. Last car 10.25 pm.

SATURDAY.

Same as Monday to Friday to 1.48, then
every 30 minutes to 6.48 pm (at 18 and
48 minutes past the hour) then 7.3, 7.18,
7.33 and 7.48 pm. Then 8.18 and every
30 minutes (at 18 and 48 minutes past)
till 9.48 pm. Last car 10.25 pm.

SUNDAYS.

Leave Car Depot 12.25 pm, 1 pm, 1.45
pm, and 2.15 pm.

Leave Wendouree Parade 12.28, 1.3, 1.48
and 2.18, and every 30 minutes (at 18 and
48 minutes past each hour) to 9.48 pm,
last car.

'Phone: City, 1465; Private, 924.

LIMOUSINE MOTOR SERVICE.

Cars For Hire—Day and Night Service.

Meet All Trains to and from Station.
Fares running around the City at cab prices
Trips, 1/- per mile up to 40 miles, over
that 10d. per mile.

PRICES:

Weddings: £2 per car.

Funeral Arrangements: 10/- per hour.
Open for Engagements at any time—Buses
or Cars.

H. TAYLOR,

Bus Proprietor,

1 Murphy Street, Ballarat East.

**LYDIARD, STREET NORTH TO GREN-
VILLE STREET (City).**

MONDAY TO FRIDAY.

Cars leave Gregory Street 10 minutes after city times.

First car 7.50 am, and every 20 minutes to 11.50 am, then every 12 minutes to 7.50 pm (Fridays 9.50 pm), then every 20 minutes to last car at 11.10 pm.

SATURDAY.

First car, 7.50 am, and every 20 minutes to 10.50 am, then 11.18 and every 12 minutes to 2.50 pm. Then every 20 minutes to 5.50 pm. Then 6.18 pm, and every 12 minutes to 7.50 pm. Then 8.10 and every 20 minutes to last car at 11.10 pm.

SUNDAY.

First car 2.10 pm, and every 20 minutes (at 10, 30 and 50 minutes past each hour) till last car at 10.10 pm.

BOILED LOLLIES

Not the Common Sort.

FRESH FROM THE STOVE.

Made by the Original
"Taffy King"

M^CDORNEY

809 STURT STREET, BALLARAT
Above Errard Street.

ORPHANAGE to BRIDGE STREET (City).
MONDAY TO FRIDAY.

7.10 am, 7.40 am, and every 20 minutes (at each hour, 20 and 40 minutes past) till 9.40 am; then 10.10 am, and every 20 minutes (at 10, 30 and 50 minutes past each hour) till 11.50 am; then 12.15 to Grenville Street, 12.45 to Station; 1.15 to Grenville Street; 1.46 to Station; 1.58 pm, and thence every 12 minutes (at 10, 22, 34, 46 and 58 minutes past each hour to 6.22 pm; then 6.40 and every 20 minutes (on each hour, 20 and 40 minutes past till last car at 11 pm). Friday nights 12 minutes service extends till 9.22 pm.

SATURDAY.

Same as Monday to Friday to 11.10 am, then every 12 minutes (at 10 22, 34, 46 and 58 minutes past each hour) till 1.34 pm; then 2 pm, and every 20 minutes (on each hour, 20 and 40 minutes past) till 7 pm; then ever 12 minutes to 8 pm; then 8.20 pm and every 20 minutes (on the hour, 20 and 40 minutes past) till last car at 11 pm.

SUNDAY.

2.20 pm and every 20 minutes (on each hour, 20 and 40 minutes past) till 10 pm, last car.

For all Surgical Appliances consult Mr. L. H. MILLER, who is an expert, and will supply you with Trusses, Abdominal Belts, Elastic Stockings, Knee Caps, Anklets, Crutches, Etc., made to order.

CALL AND GET HIS ADVICE BEFORE
GOING ELSEWHERE.

CLIENTS VISITED IN THEIR OWN HOME
IF NECESSARY.

Just Phone 1196 and we will do the rest.
G. GODFREY and Co., 628 Sturt Street,
Ballarat.

MOUNT PLEASANT TO BRIDGE STREET (City).

MONDAY TO FRIDAY.

8.10 am and every 20 minutes (at 10, 30 and 50 minutes past each hour) to 11.50 am, then 12.15 pm to Bridge Street, 12.45 to Station, 1.15 pm to Bridge Street, and 1.45 pm to Station; then 1.58 pm, and every 12 minutes (at 10, 22, 34, 46 and 58 minutes past each hour) to 6.22 pm; then 6.40 pm, and every 20 minutes (at each hour, 20 and 40 minutes past) till last tram 11.0 pm. On Friday nights 12 minutes service continues from 6.22 to 9.22 pm.

SATURDAY.

Same as Monday to Friday to 11.10 am, then 11.22 am and every 12 minutes (at 10, 22, 34, 46 and 58 minutes past each hour) to 1.34 pm, then 2.0 and every 20 minutes (on each hour and 20 and 40 minutes past) till 7 p.m. then every 12 minutes till 8 pm; thence 8.15, 8.40 and every 20 minutes (on each hour, 20 and 40 minutes past till last tram at 11 pm.

SUNDAY.

2.20 pm, and every 20 minutes (on the hour, and 20 and 40 minutes past) till last car at 10 pm.

BALLARAT—ELMHURST. Sandlant's Motor Service.

Bus leaves Ballarat (Plough and Harrow Hotel) 3.45 p.m., Learmonth 4.30, Addington 4.45, Waubra 5.5, Lexton 5.30, Amphitheatre 6.15, Elmhurst 6.45.

Leaves Commercial Hotel, Elmhurst, 6.45 am, Amphitheatre 7.15, Lexton 8.0, Waubra 8.30, Addington 8.45, Learmonth 9.0, arrives Ballarat 9.45.

Passengers and Goods Carried.

MONEY ORDERS—RATES OF COMMISSION.

For Money Orders Payable in—

The Commonwealth—6d for each £5 or fraction of £5.

New Zealand—3d for each £1 or fraction of £1, with minimum of 6d.

POSTAL NOTES.

Postal Notes, from 6d. to 20/, may be obtained and are payable at all Post Offices in the Commonwealth. The values are so arranged that any sum of Shillings and Sixpences up to One Pound can be remitted by two Postal Notes.

COMMISSION—

1/	1d
1/6	1d
2/	1d
2/6	1d
3/	1½d
3/6	1½d
4/	1½d
4/6	1½d
5/	1½dd
5/6	2d
6/	2d
7/6	2d
10/	3d
11/	3d
15/	3d
20/	3d