

Scraps



№266 TO BRIGHTON ROAD IN ST KILDA ROAD, AT
CORNER OF MOUBRAY ST. ABOUT 1926/27.

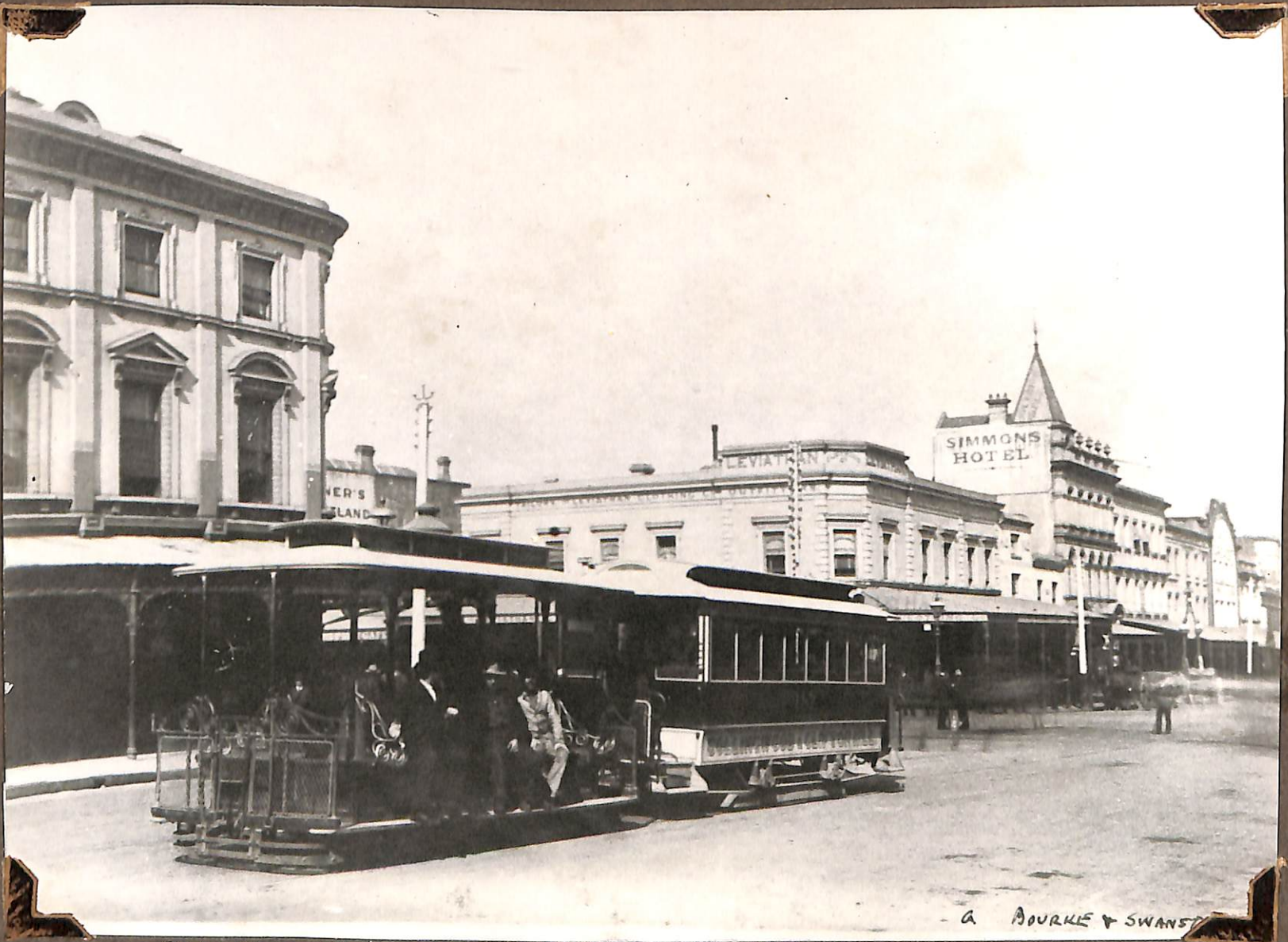


CABLE TRAM №162 IN BOURKE ST AT SWANSTON ST 1901.

- G. BOURKE & SWANSTON



Nº 266 TO BRIGHTON ROAD IN ST KILDA ROAD, AT
CORNER OF MOUBRAY ST. ABOUT 1926/27.



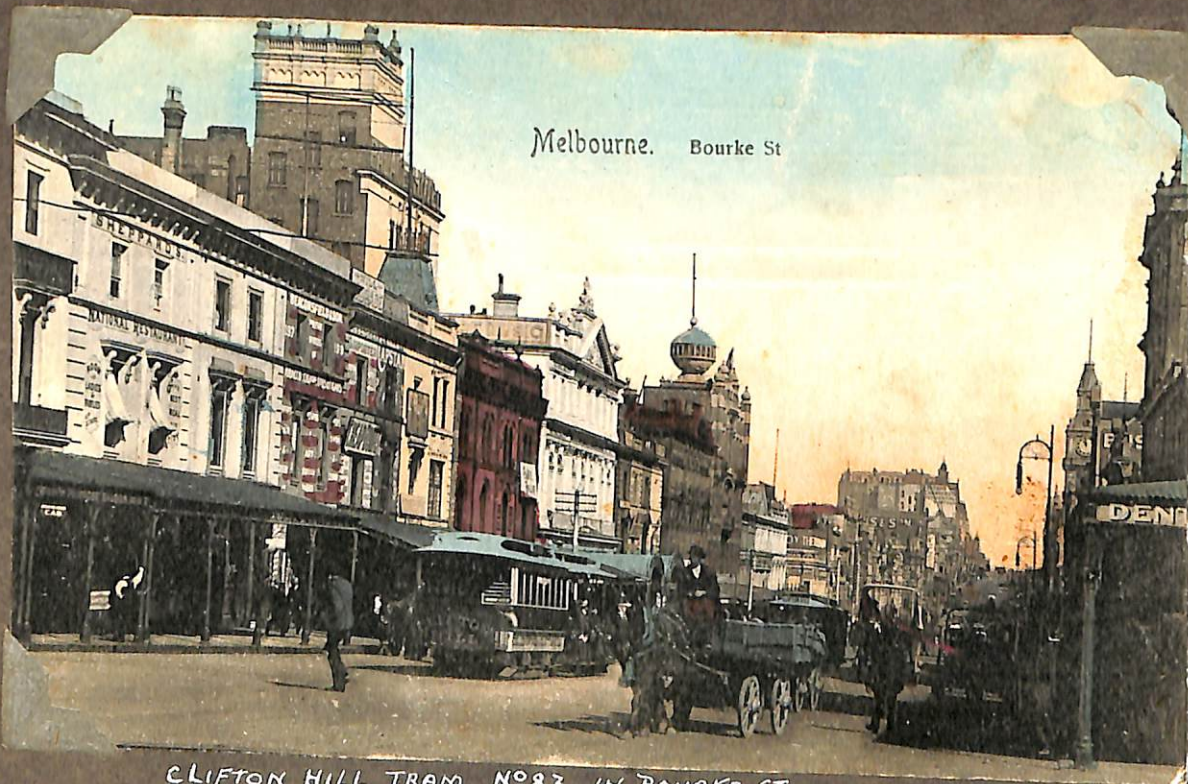
CABLE TRAM Nº 162 IN BOURKE ST AT SWANSTON ST 1901.

- G. BOURKE & SWANSTON

M & M.T.B.



CLIFTON HILL CABLE TRAMS IN BOURKE ST 1910



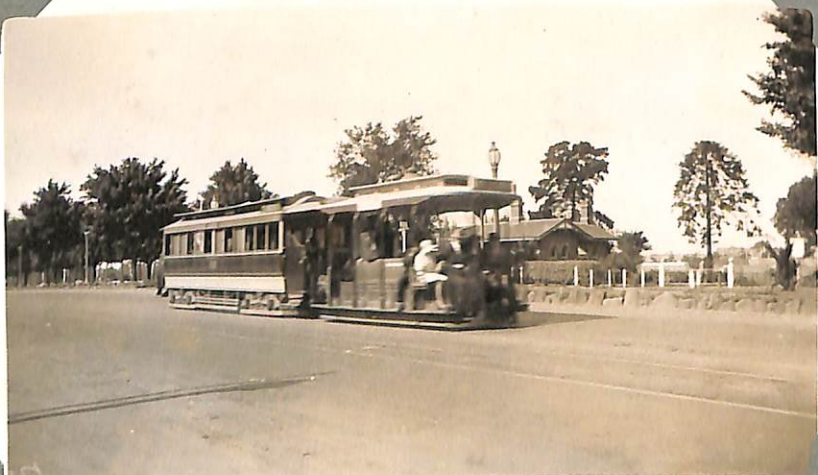
CLIFTON HILL TRAM N°83 IN BOURKE ST.



CABLE TRAM FOR ST KILDA BEACH IN SWANSTON ST.
MANY YEARS AGO.



RICHMOND CABLE TRAM IN FLINDERS STREET
MANY YEARS AGO.



8 WHEEL TRAILER (BRUNSWICK LINE)
ROYAL PARADE

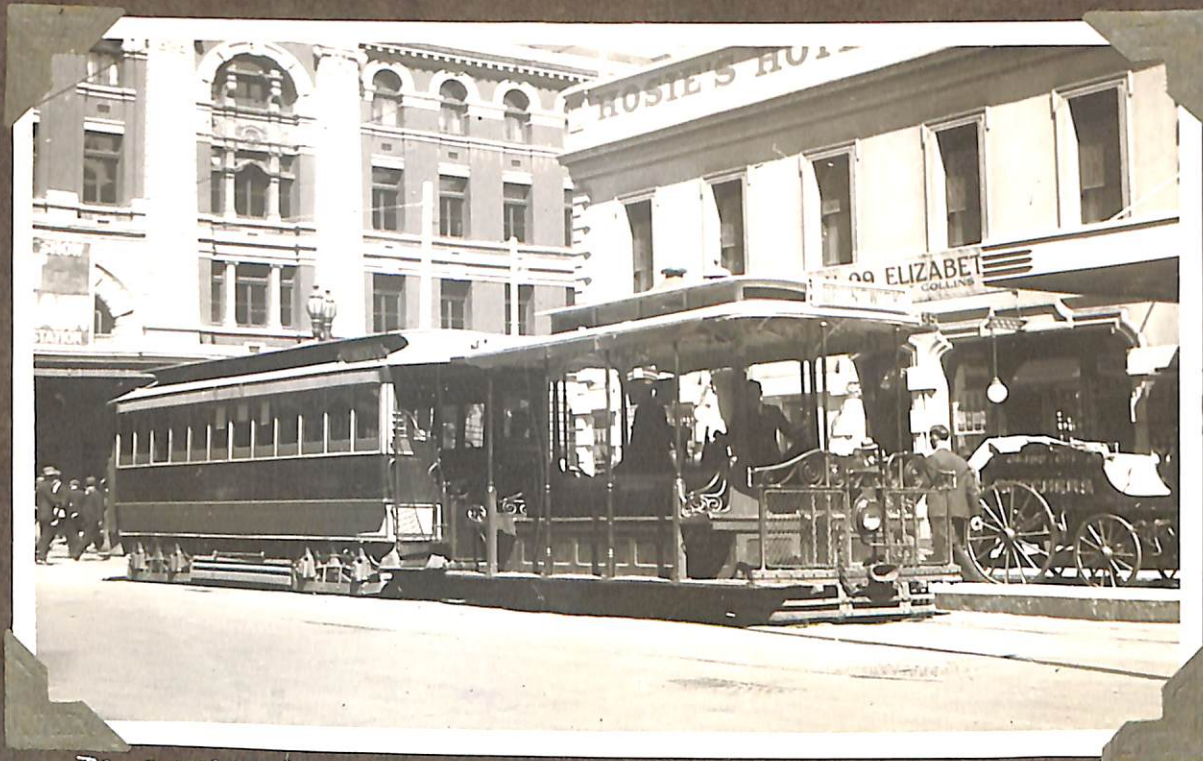


BRUNSWICK CABLES
IN
ELIZABETH ST.



Flinders Street, Melbourne

RICHMOND CABLE TRAM IN FLINDERS ST.



BRUNSWICK CABLE TRAM (3 WHEEL TRAILER)
ELIZABETH ST. CITY, ON LAST DAY
OF SERVICE. 26-4-36



ELIZABETH ST.
FROM "THE ARGUS" BUILDING



SPENCER ST RAILWAY OFFICES MELBOURNE V.G.M.

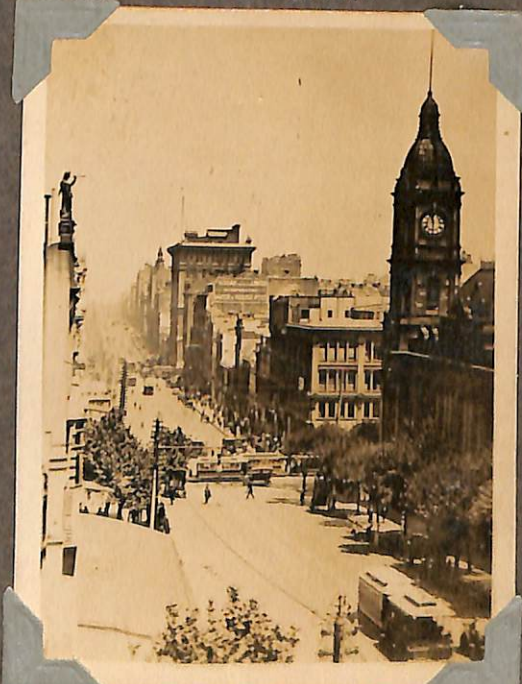
RICHMOND CABLE TRAM SPENCER ST.



PORT MELBOURNE CABLE IN COLLINS ST
MANY YEARS AGO.



NO 583 IN COLLINS STREET

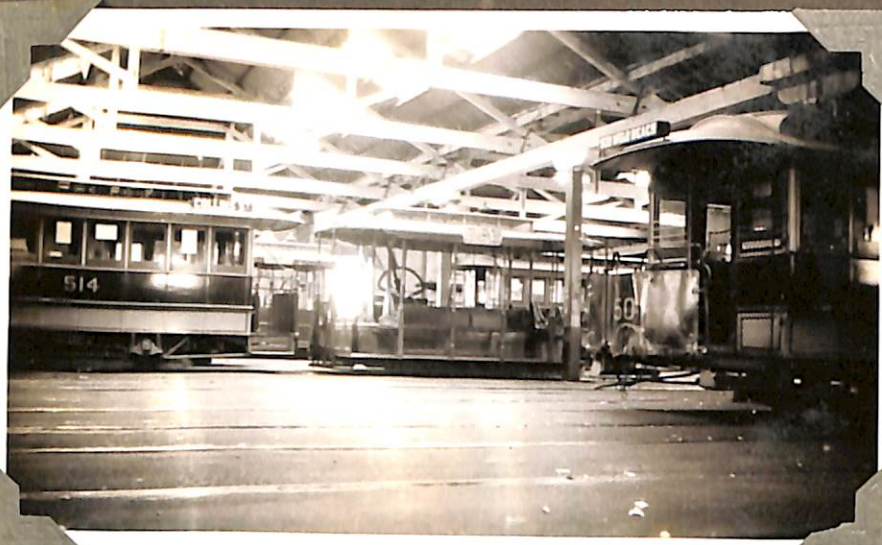


COLLINS ST CABLES

*showing how cables in Sweden
of present type*



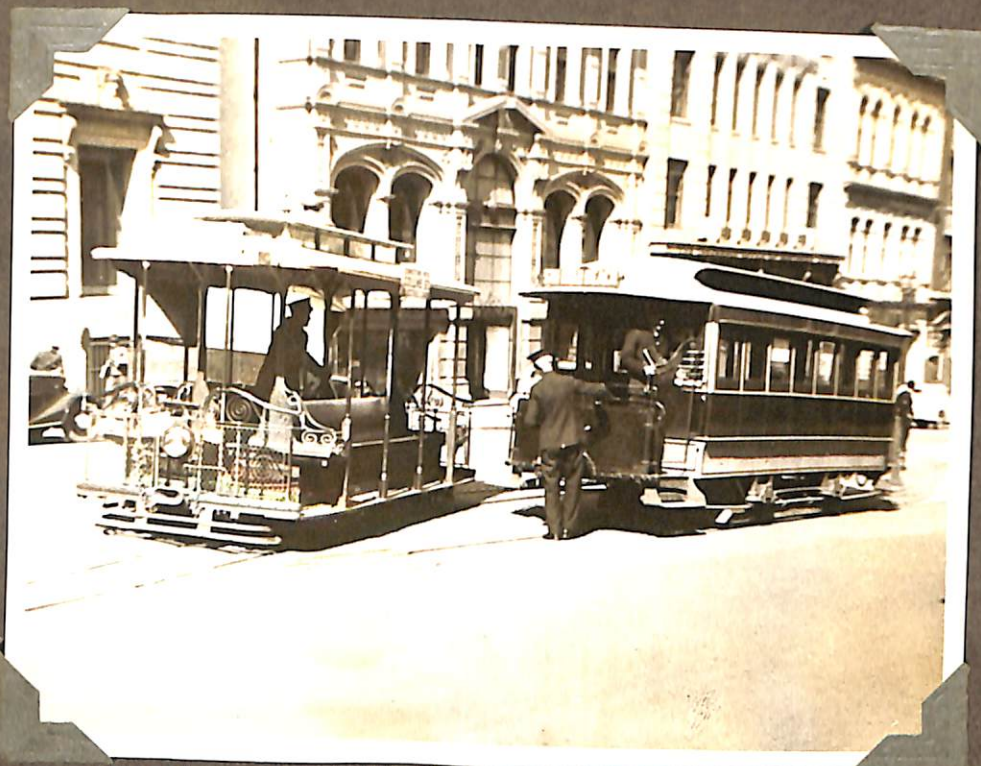
WEST MELBOURNE & NORTH FITZROY CABLES
COLLINS & ELIZABETH STREETS.



SOUTH MELBOURNE DEPOT 1937



TRACTOR HAULING CABLE STH MELBOURNE DEPOT.



SHUNTING STH MELB. BEACH CABLE TRAM
MARKET ST. CITY



STEAM, ELECTRIC, CABLE & PETROL TRANSPORT.
FLINDERS & MARKET ST'S. 1936.



CABLE NO 449 AT PORT MELBOURNE TERMINUS.



NO 520 COLLINGWOOD TERMINUS



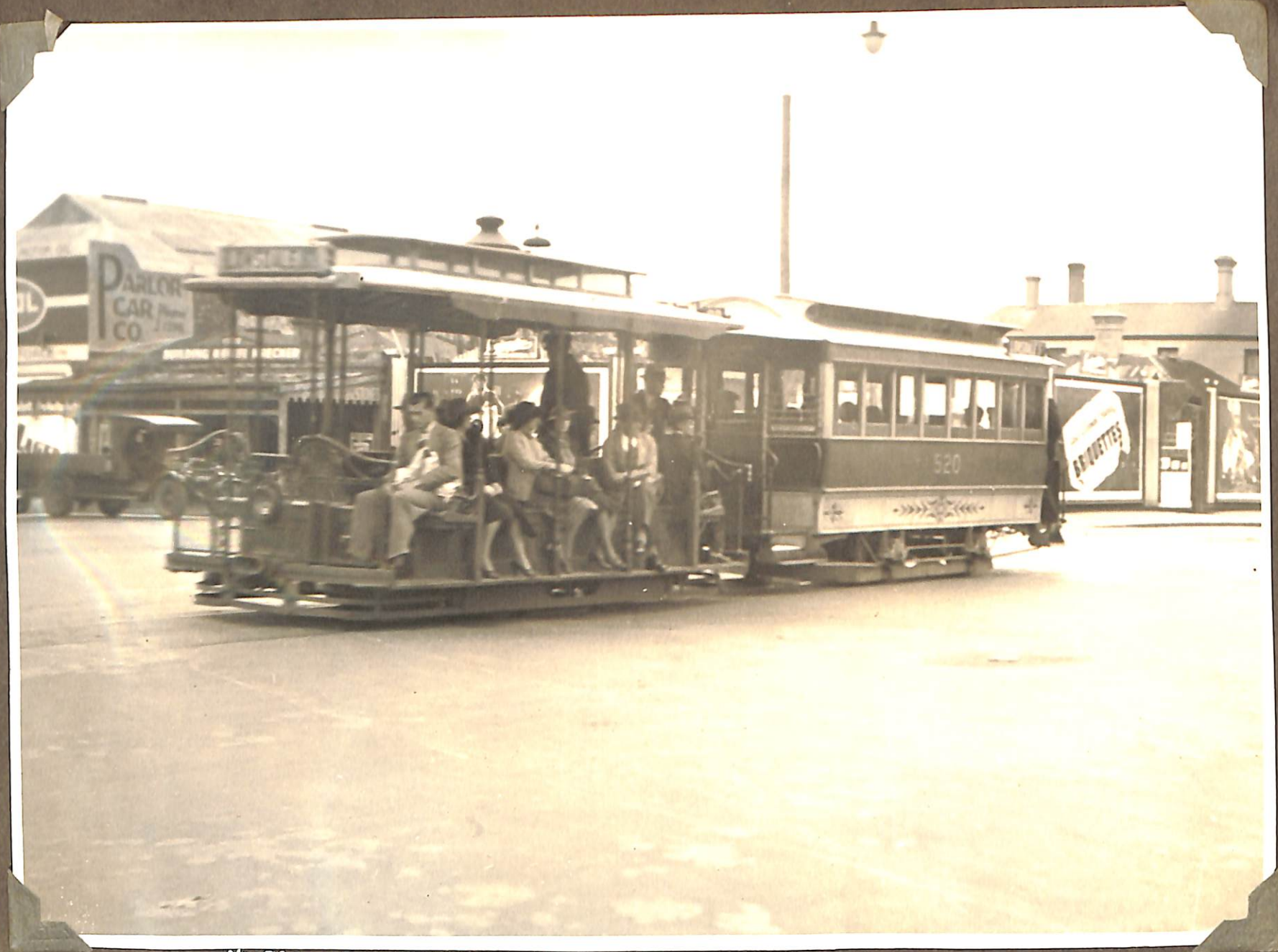
NO 593 COLLINGWOOD



CABLE NO 21 COLLINGWOOD TERMINUS.
TRAM
FIRST CABLE BUILT IN MELBOURNE



CABLE NO 524 AT COLLINGWOOD.
TRAILER FITTED WITH SCRAPERS.



No 520 AT INTERSECTION OF JOHNSTON & NICHOLSON STS.
 LAST DAY OF SERVICE 15-4-39



CABLE TRAMS, JOHNSTON ST. VICTORIA PARK.



OLD & NEW TRANSPORT 15-4-39.
 CABLE No 520 LYBON & VICTORIA STS.



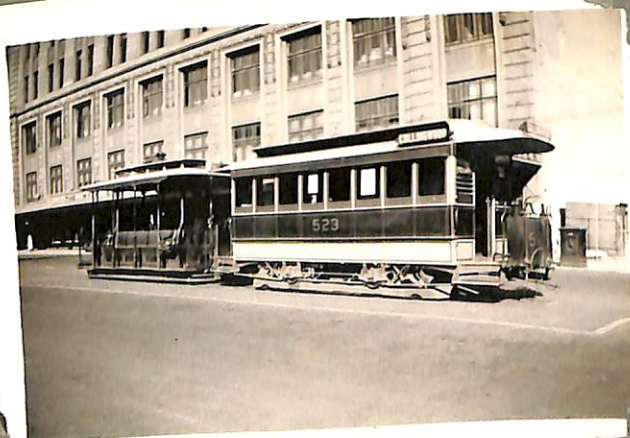
CABLE AND ELECTRIC TRAMS
LONSDALE & SWANSTON STS.



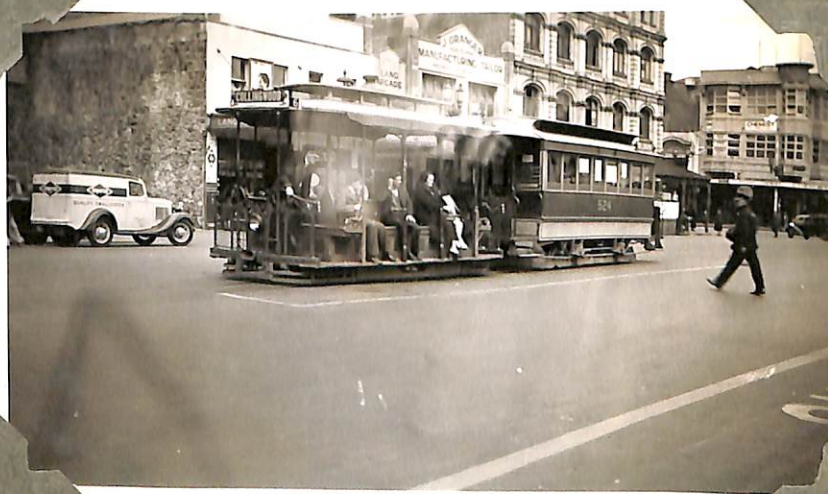
NO 520 LONSDALE ST. TERMINUS



COLLINGWOOD CABLE NO 220
INTERSECTION OF RUSSELL & LONSDALE ST.



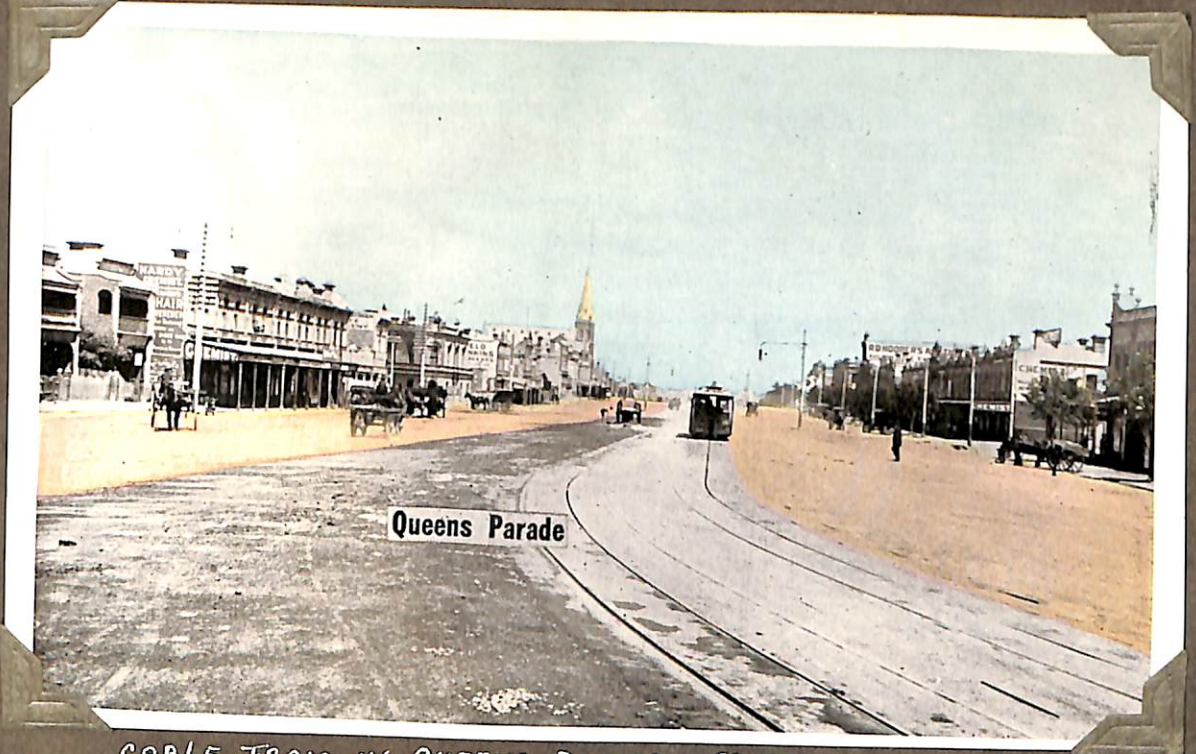
NO 523. LONSDALE ST. SEPT 1936.



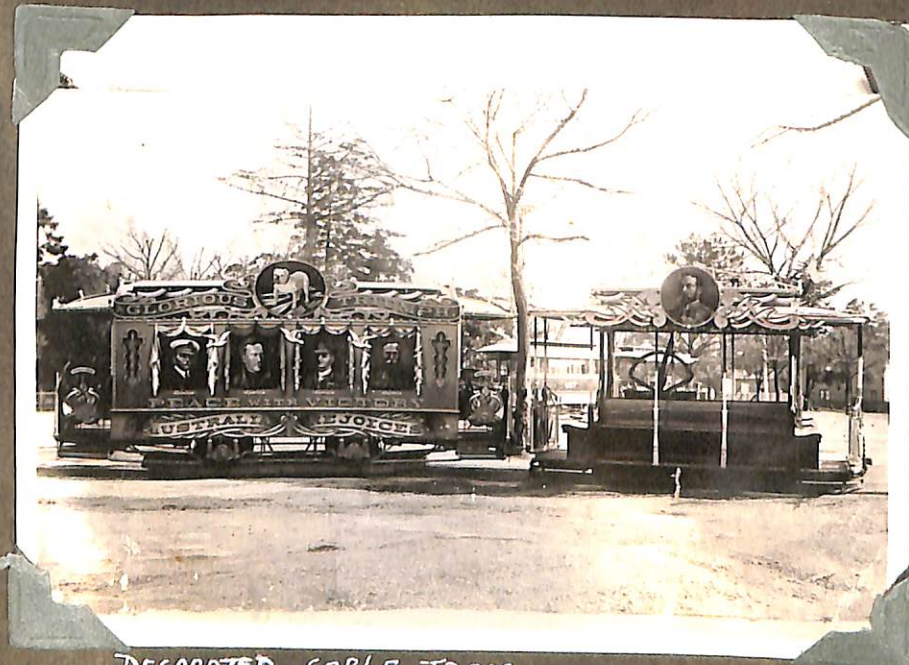
NO 524 LONSDALE ST TERMINUS



NO 391 FOR NORTH CARLTON AT LONSDALE ST. CITY.



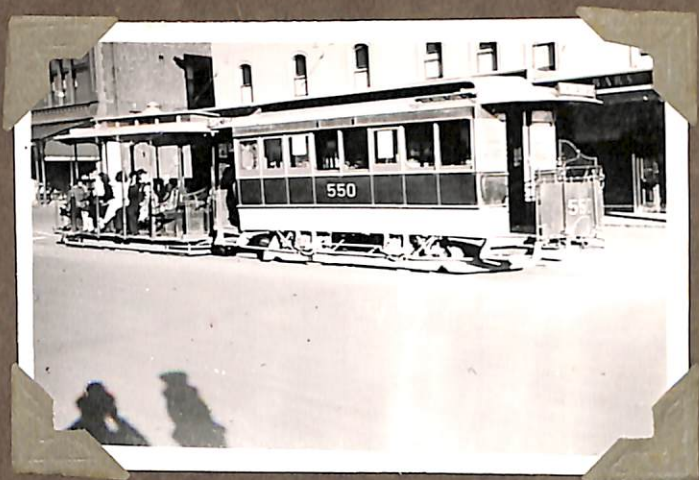
CABLE TRAM IN QUEENS PARADE CLIFTON HILL



DECORATED CABLE TRAM
ARMISTICE CELEBRATIONS.
CLIFTON HILL 1918.



ELECTRIC & CABLE TRAMS.
SPENCER & BOURKE STS.



NO 550 BOURKE ST. TERMINUS



NO 384 AT BOURKE ST. TERMINUS OCT. 1940.



CABLES 237, 379 BOURKE ST.
3-1-1939



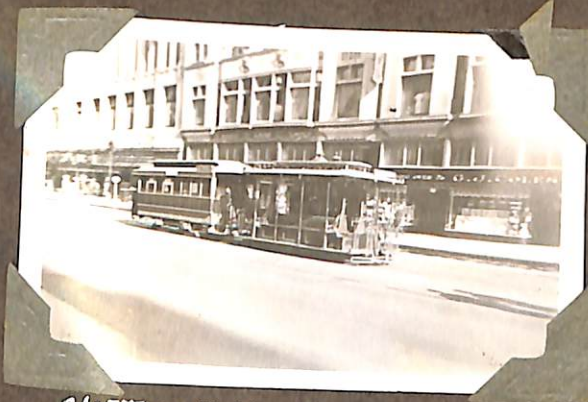
NOS 583, 507 BOURKE ST.



NO 568 BOURKE ST. CITY.



VIEW OF BOURKE ST FROM CABLE TRAILER.



CLIFTON HILL TRAM IN BOURKE ST.



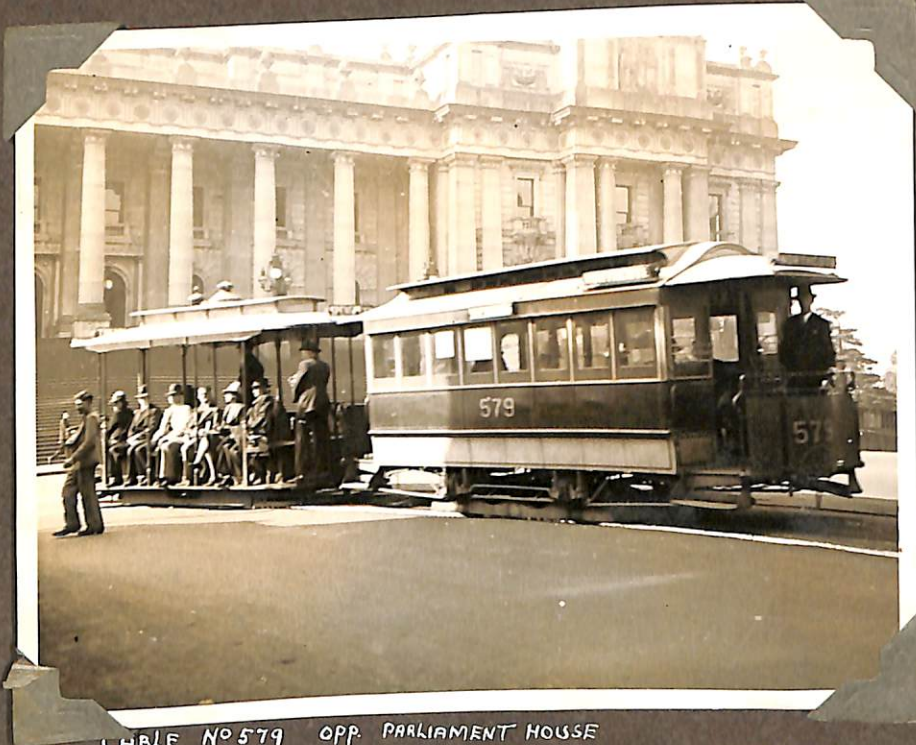
REAR VIEW OF CABLE BOURKE ST.



LAST CABLE TRAM LEAVING BOURKE ST TERMINUS, 26-OCT. 1940. DUMMY NO. 588.



NO 543 COMING INTO BOURKE ST.



CABLE NO 579 OPP. PARLIAMENT HOUSE
SPRING & BOURKE STS.



584 SWINGING INTO
SMITH ST.



NORTHCOTE CABLE IN
GERTRUDE ST.



TRAM FROM NICHOLSON ST. NEAR POWER HOUSE.



CABLE TRAM NO 506 PASSING UNDER RAILWAY BRIDGE AT CLIFTON HILL 6-5-40.



NO 560 FROM NORTHCOTE PASSING CABLE POWER HOUSE. NICHOLSON & GERTRUDE STS.



CABLE NO 515 OUTSIDE CLIFTON HILL TRAM DEPOT. 13-10-40.



NO 532 NORTHCOTE TERMINUS.
XMAS 1939.



TRAILER NO 532 NORTHCOTE TERMINUS.



DUMMY. NORTHCOTE TERMINUS.



19558 NICHOLSON ST. TERMINUS.
DEC. 1939



REAR VIEW OF NO. 1.
NICHOLSON ST.

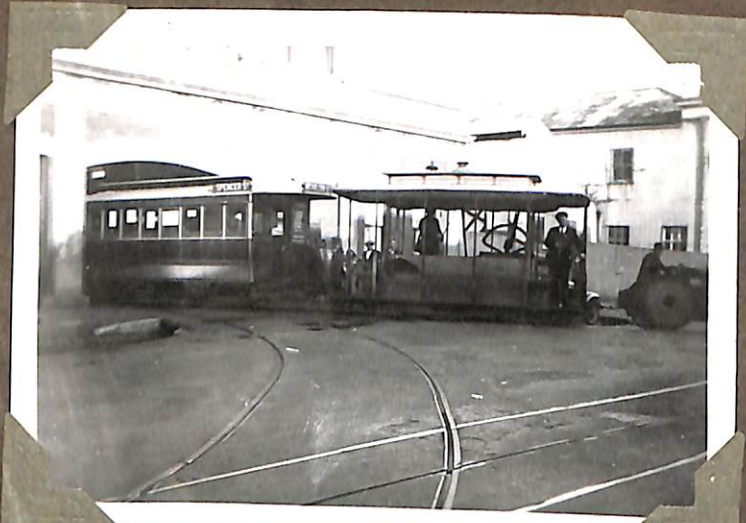


CABLE CAR NO. 1. FIRST CABLE IN MELB.
BUILT JOHN STEPHENSON, NEW YORK
U.S.A.



THE ROSE SERIES P.4765
COPYRIGHT

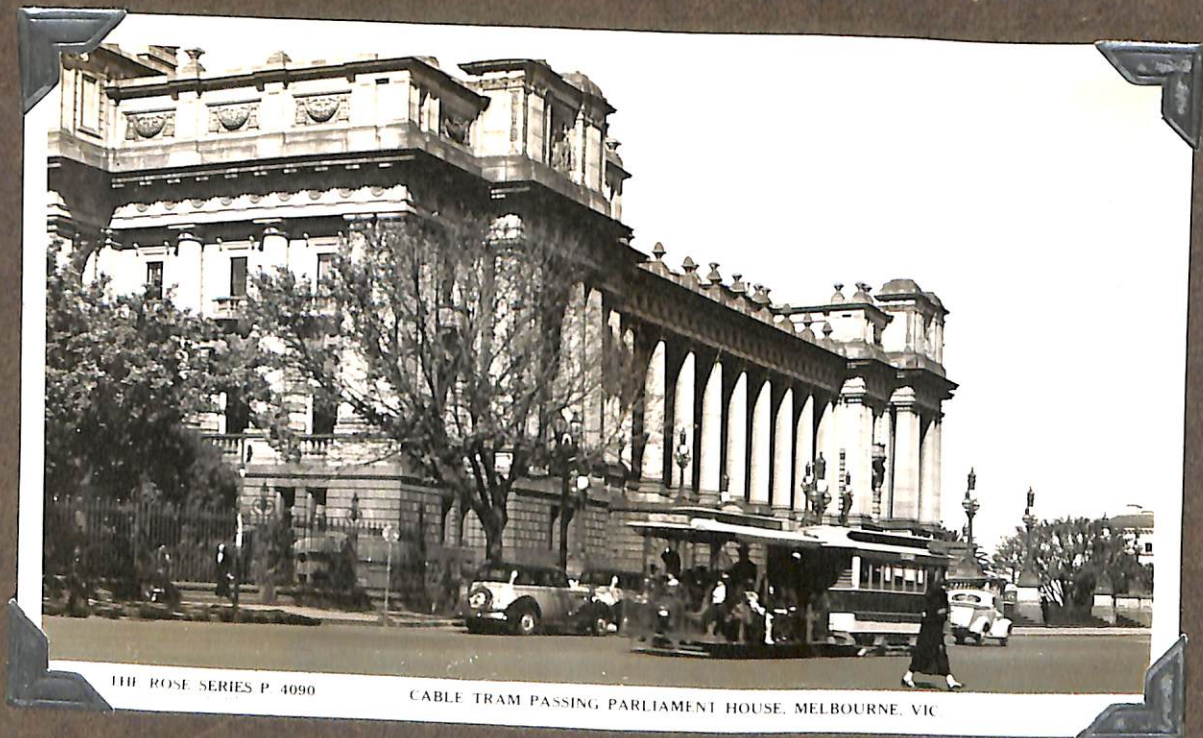
BOURKE STREET MELBOURNE.



HAULING NO1 OUT OF NICHOLSON ST. DEPOT.



DOUBLE DECK BUS NO 241
AT NORTHCOTE.



THE ROSE SERIES P. 4090

CABLE TRAM PASSING PARLIAMENT HOUSE, MELBOURNE, VIC



THE ROSE SERIES P. 1522
CLIPRIGHT

THE CORNER OF BOURKE AND SWANSTON STREETS.

ELECTRIC AND CABLE TRAMS.



550 IN BOURKE ST. AT WILLIAM ST.
 MARCH, 1940.



NICHOLSON ST TRAM IN BOURKE ST.



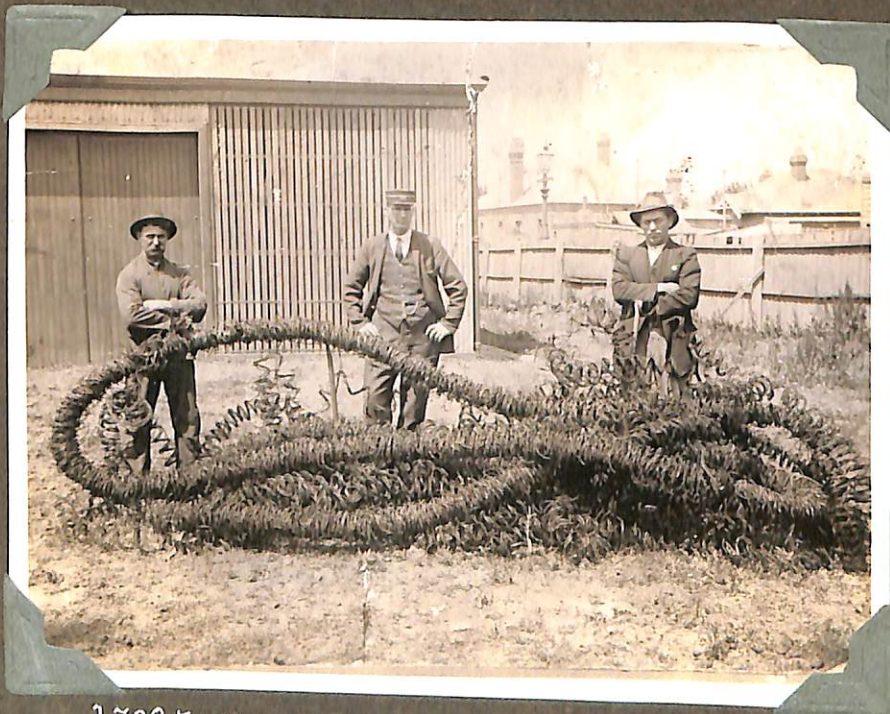
NO 550, NICHOLSON ST TRAM SHUTTING ... BOURKE & SPENCER STS.



NO 286 TURNING OUT OF SMITH ST
 INTO GERTRUDE ST. MARCH 1940.



CABLE NO 63 ON THE SPENCER ST (CITY) - FITZROY LINE IN 1901.
 PHOTO TAKEN IN COLLINS ST. NEAR TERMINUS.



2700 FEET OF BUNCHED CABLE
 NTH. FITZROY DEPOT. 1918.



BOURKE STREET.