

"A" CLASS (REBUILT) NO 166
 AT RUSSELL ST. TERMINUS IN BARKLY ST
 FOOTSCRAY 21-4-45

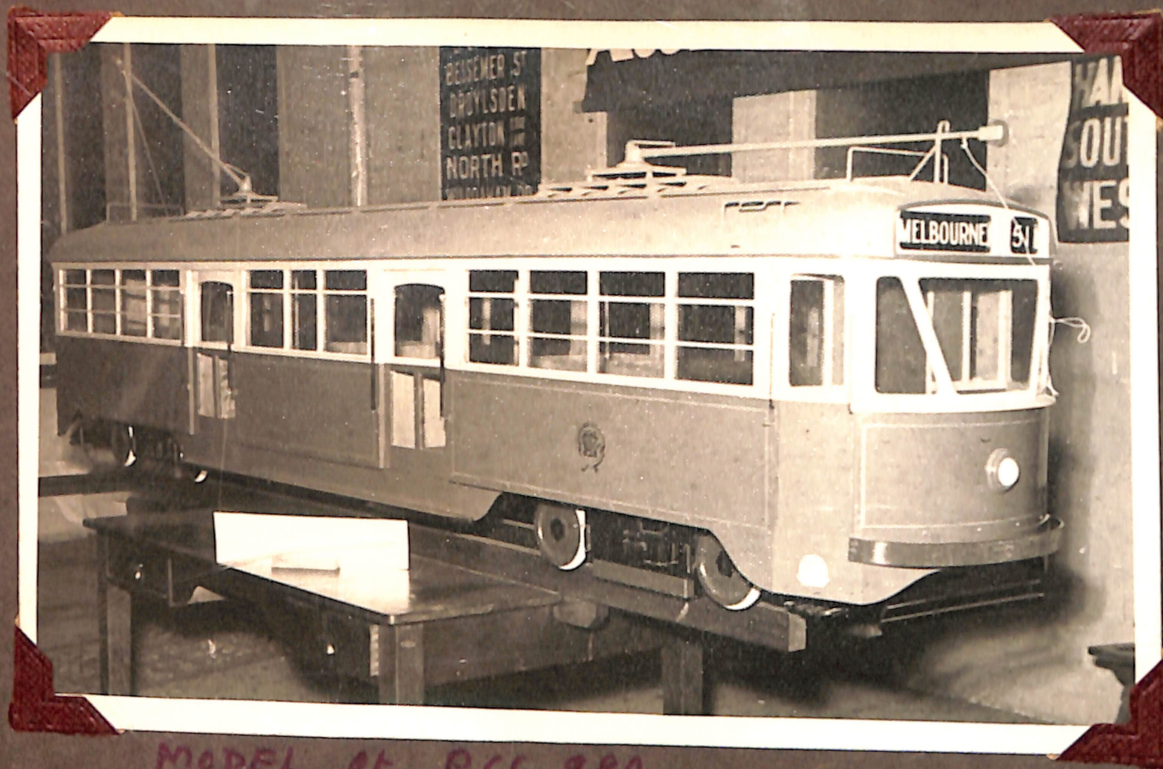
"A" 169 TURNING OUT OF
 LEEDS ST INTO HOPKINS ST.
 FOOTSCRAY 21-4-45.

"A" CLASS. NOS 157 + 158
 IN BALLARAT RD AT GORDON ST.
 FOOTSCRAY 20-4-45

"A" 168 FOOTSCRAY DEPOT



A/155 166 Ballarat Rd 20/4/45



MODEL OF PCC 980
at Exhibition Show Sept 1952.



A.E.T.A. TOUR 29-11-47
TURNING OUT OF GLENFERRIE ROAD INTO
MALVERN ROAD



A.E.T.A. TOUR. Y'CLASS 610 29-11-47
Turning out of Gotham Road into
Glenferrie Road Kew.



NO 7 TANK CAR
HANNA ST DEPOT.



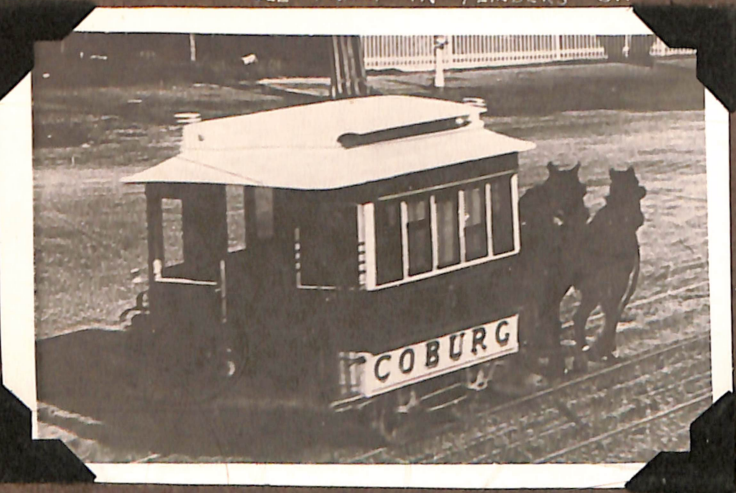
HAWTHORN TRAMWAYS
HORSE TRAM NO 26



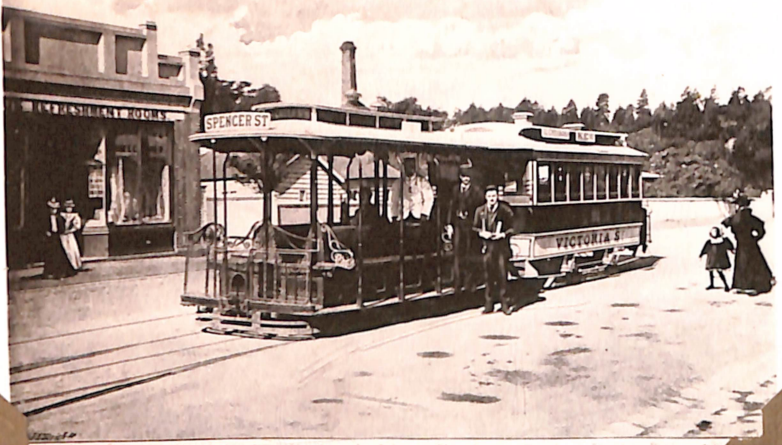
BRUNSWICK & COBURG HORSE TRAM



FLINDERS ST. RLY. STATION
4-9-1926.
RICHMOND CABLE TRAM IN FLINDERS ST.

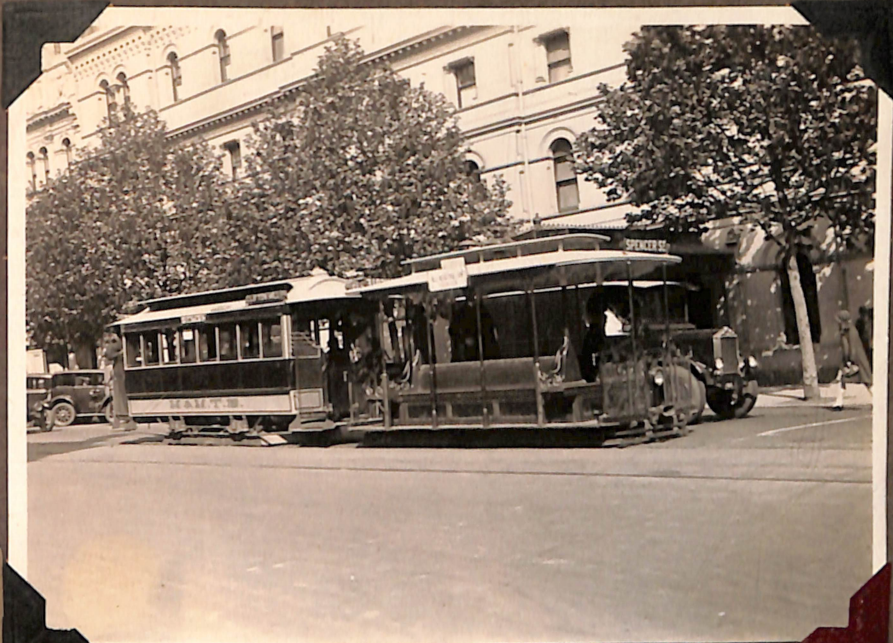


THE MELBOURNE TRAMWAY AND CABLES CO. PATENT



The photo shows the tram in Victoria St. A cable tramway in Melbourne.

VICTORIA ST. (RICHMOND) CABLE TERMINUS
"CABLE TRAM NO 81."



CABLE NO 457 IN BOURKE ST.
NEAR WILLIAM ST. 14-10-1929.



MARKET STREET, MELBOURNE.



CABLE TRAMS IN ELIZABETH ST FROM FLINDERS ST RLY. BUILDINGS.

January 1929 30-12-40



CABLE TRAMS
SWANSTON & COLLINS STREETS. 1905.



SWANSTON ST IN 1905.



BOURKE ST 1906.



CABLE NO 39. IN ST KILDA ROAD
NEAR ST KILDA JUNC.



Flinders Street, Melbourne

CABLE TRAM IN FLINDERS STREET.
1906. FROM SPENCER ST.

M & M. T. B.



CABLE TRAM IN SWANSTON ST.
LONSDALE STREET



CABLE TRAM IN THE ESPLANADE, ST KILDA.



CABLES IN BOURKE ST. MELBOURNE.



CABLE TRAM NO 73 IN COLLINS ST. EAST IN 1901

COLLINS ST. E. - MELB.



COLLINS STREET, MELBOURNE

NORTH FITZROY CABLE TRAM
IN COLLINS ST.

WEST & NORTH MELB. CABLES
IN ELIZABETH ST IN 1901



FIRST CABLE TRAM LEAVING
RICHMOND ON OPENING DAY 10-11-1885.

The Doncaster and Box Hill Electric Road Company Ltd.
1889 - 1896.



THE BOX CAR. - The second one used on the line.

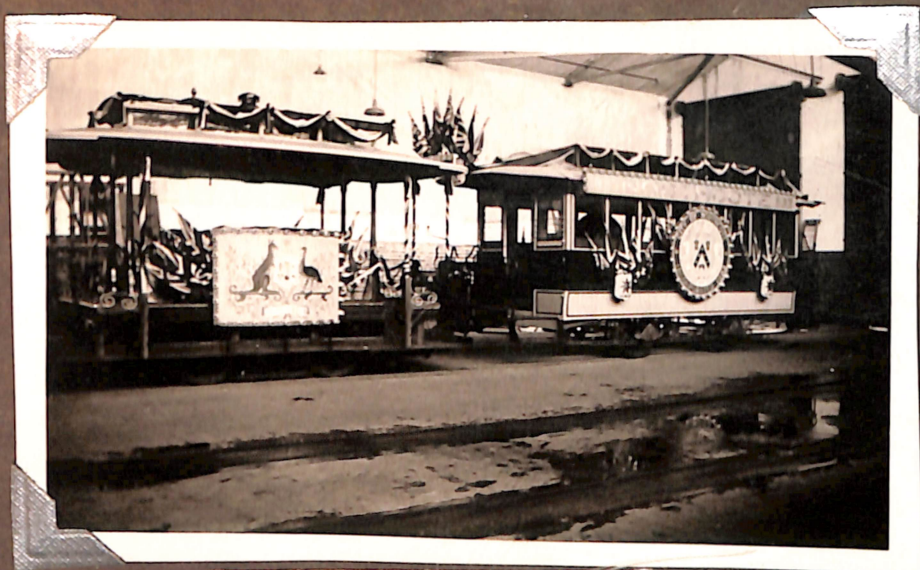
OPEN SIX "BENCH" CAR.



Australia's first electric tram, arriving at Doncaster on opening day 14-10-1889.



BATTERY ELECTRIC TRAM
CORNER TOORAK RD. & CHAPEL ST
PRAHRAN 1883.



Cable tram decorated for
celebrations. City of Northcote
1883 - 1983. AT PRESTON.

V.R. SANDRINGHAM - BLACK ROCK LINE 4'8½" GAUGE
NO 23 ~~EX~~ SUMMER CAR. AT SANDRINGHAM STATION.

V.R. SANDRINGHAM - BLACK ROCK LINE
NO 50 SANDRINGHAM RLY. STN.
ONE MAN CAR.

V.R. NO 51 ONE MAN BOGIE CAR
AT BLACK ROCK.



SWANSTON ST



PRESTON CABLE CAR N° 175
in Bourke Street.



Swanston St. Melbourne.



Cable dummy decorated for
RELIEF OF MAFEKING. 17TH MAY 1900.



RICHMOND



LAST CABLE TRAM TO NTH CARLTON RATHDOWN ST.



NO 40. RICHMOND CABLE TRAMS
FLINDERS ST.



FLINDERS ST.



SHUNTING - BOURKE ST.



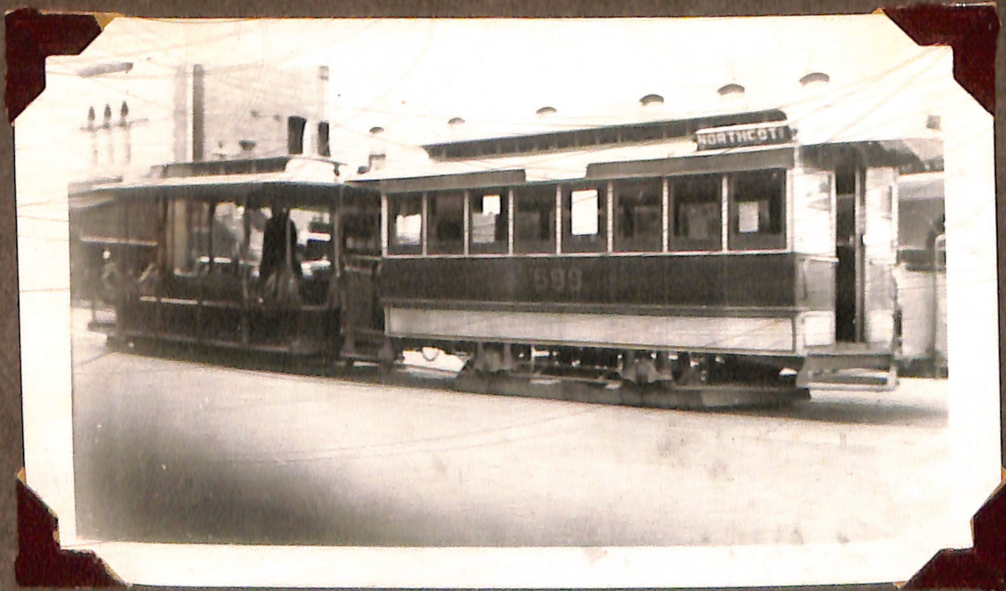
Elizabeth Street, Melbourne



Chapel Street, Prahran.



COLLINS ST.
MELBOURNE



BOURKE ST AUG 1935

5000

Princes Bridge, Melbourne.



