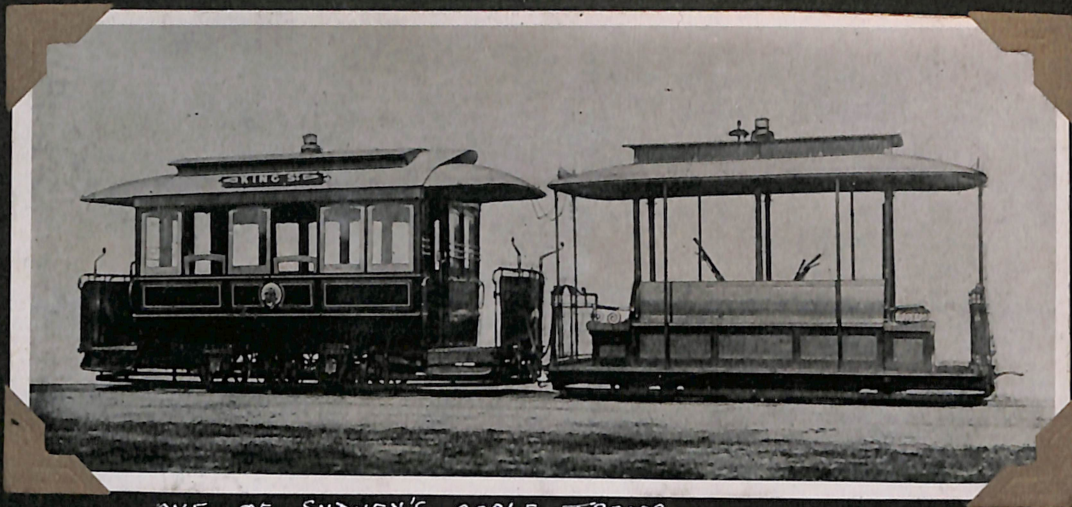
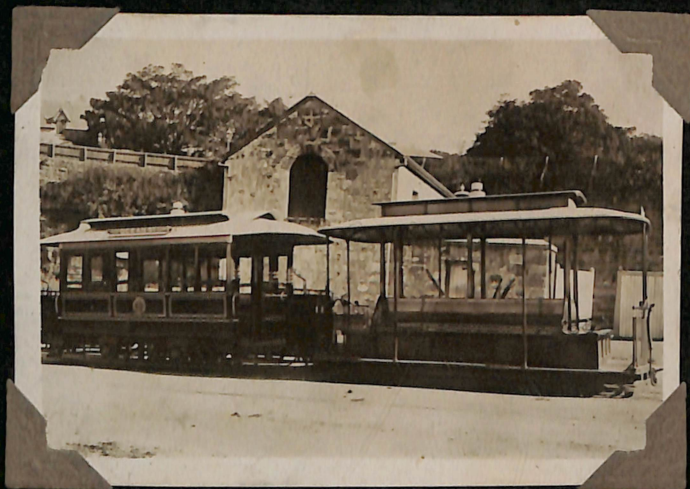


N. S. W. T.
SYDNEY SYSTEM.



ONE OF SYDNEY'S CABLE TRAMS.



CABLE TRAM AT OCEAN ST
TERMINUS ABOUT 1900.
DUMMY N°5 & CAR N°1.



CABLE TRAM IN KING ST. SYDNEY IN 1901.



CABLE TRAM NO 17 RUSHCUTTERS BAY
ABOUT 1904.



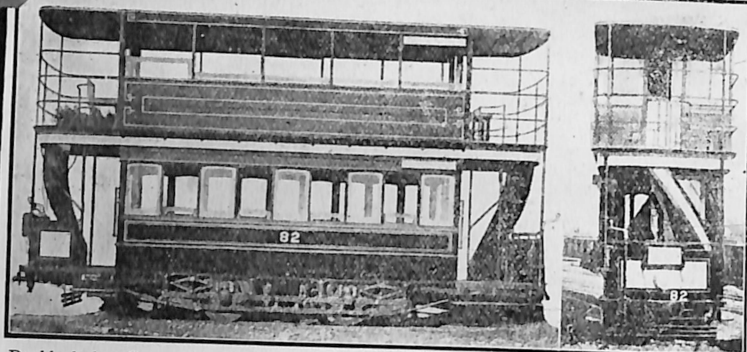
FIRST TYPE OF ELECTRIC TRAM NO 1
OUTSIDE NTH SYDNEY DEPOT 1894.
CARS SOLD TO BALLARAT TRAMWAYS
IN 1905.



SYDNEY'S FIRST TYPE OF EL. TRAMS.
NO 2 EL. TRAM & NO 1 TRAILER (EX CABLE TRAILER)
NORTH SYDNEY 1891.



SPIT JUNCTION 1900
SHOWING OLD TYPES OF ELECTRIC TRAMS.
WITH CABLE TRAIL CAR IN FOREGROUND.

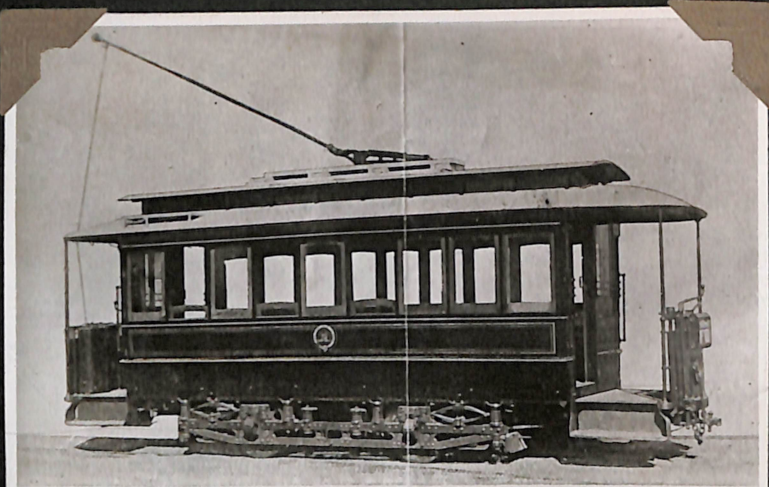


Double-decker Car used on Newtown route in 1907. Withdrawn from service after a few months' trial.

"C" CLASS NO 82 AS DOUBLE DECK CAR.



"C" CLASS TRAILERS AT ABERMAIN
USED AS MINERS' CARRIAGES.



FOUR-WHEELED CLOSED MOTOR AND TRAIL CARS.

| | | | | |
|----------------------------|---------|------|--|-----------------------|
| Length over headstocks | ft. in. | 25 0 | Tare (including motor equipments) | 7 tons 19 cwt. 2 qrs. |
| Length over saloon body | 18 0 | | Seating capacity, per car | 26 passengers. |
| Height to floor to ceiling | 6 8 1/2 | | The saloon seats are placed longitudinally. Sliding doors. | |
| | 7 7 | | | |

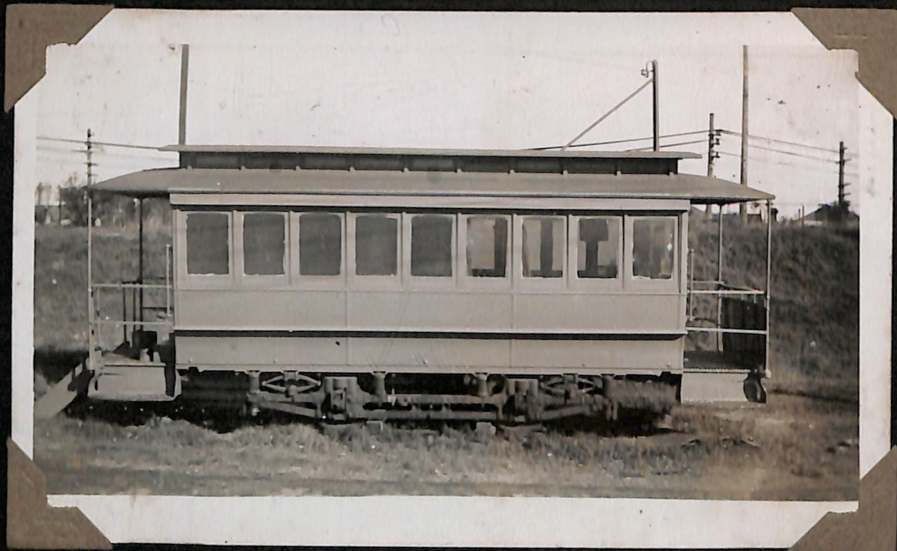
STANDARD "C" CLASS TRAM.

"C"
CLASS.
4 WHEEL
SALOON
CAR.



ROSE BAY TRAMWAY.

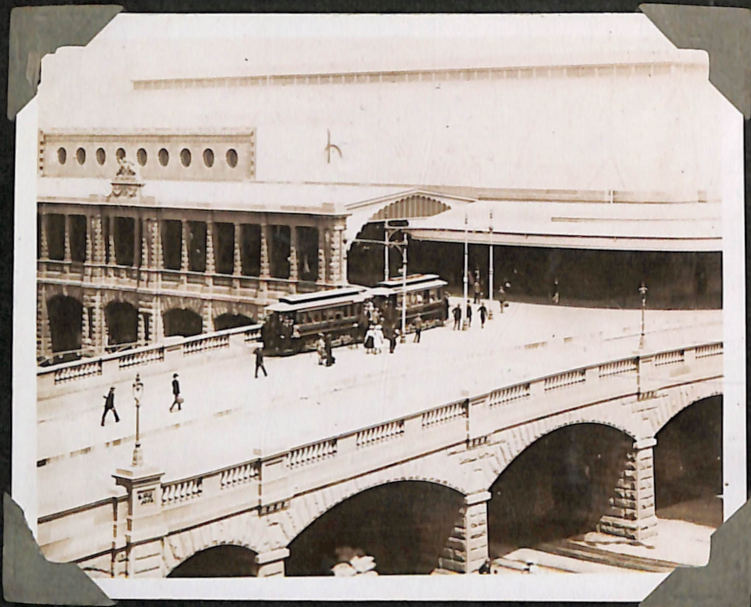
A "C" CLASS AT ROSE BAY TERMINUS
ABOUT 1900.



"C" CLASS TRAILER CAR
AT RANDWICK



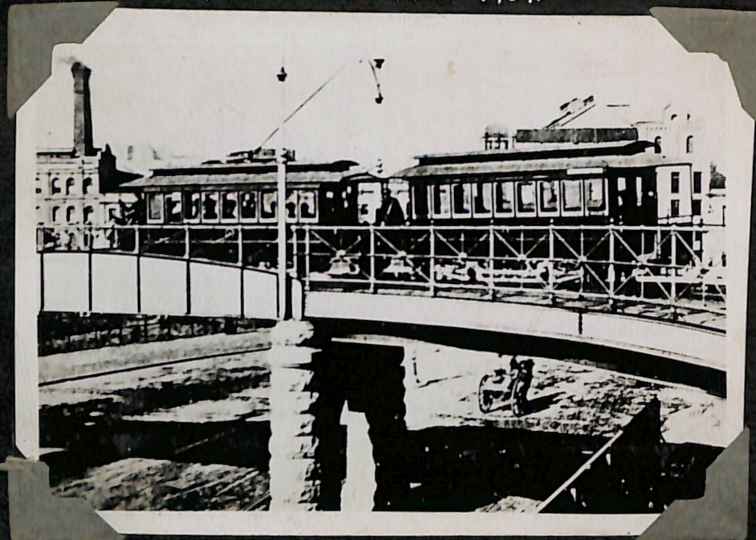
ELECTRIC & STEAM TRAMS AT
CENTRAL RAILWAY SQUARE IN 1902.
"C" CLASS ELECTRIC TRAMS & TRAILERS



"C" CLASS 269 HAULING TRAILCAR 77
PRESENT SYDNEY CENTRAL STATION 1907.



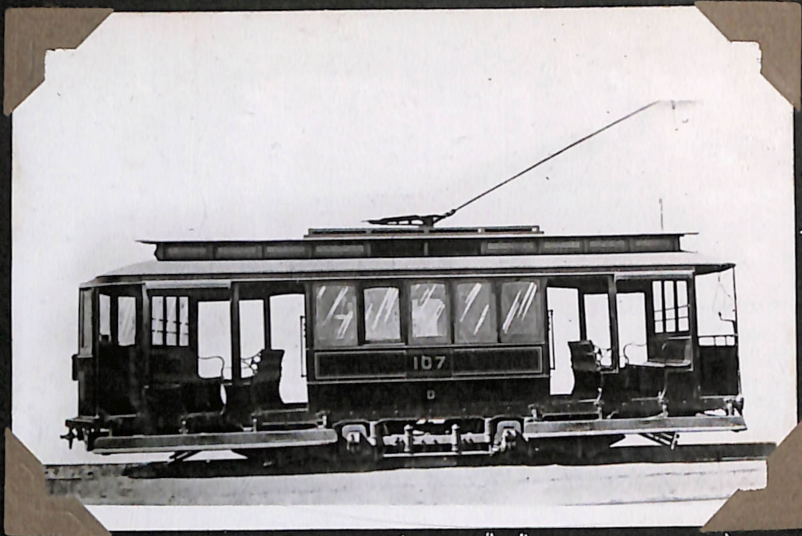
OLD SYDNEY RAILWAY STATION 1905
SHOWS D & C TYPE PERMANENTLY COUPLED SET.
"D" 100 - "C" 17. ON LEFT. "C" 22 & 77 TRAILCAR ON RIGHT.



"C" CLASS 41 & TRAILER 77 CROSSING OVER
EDDY AVENUE



"C" TYPE NO. 87M AND 96T ON RLY. RAMP
CROSSING OVER EDDY AVENUE.



"D"
CLASS
TRAM

"D" CLASS N° 107 (FIRST "D" CLASS TRAMS)
BUILT IN 1903.



"D" CLASS TRAMS AT NORTH SYDNEY.



OLD "D" CLASS N° 107.
USED NOW AS CLUB ROOM AT LEICHHARDT DEPOT.



REMAINS OF A "D" CLASS AT NORTH MANLY.

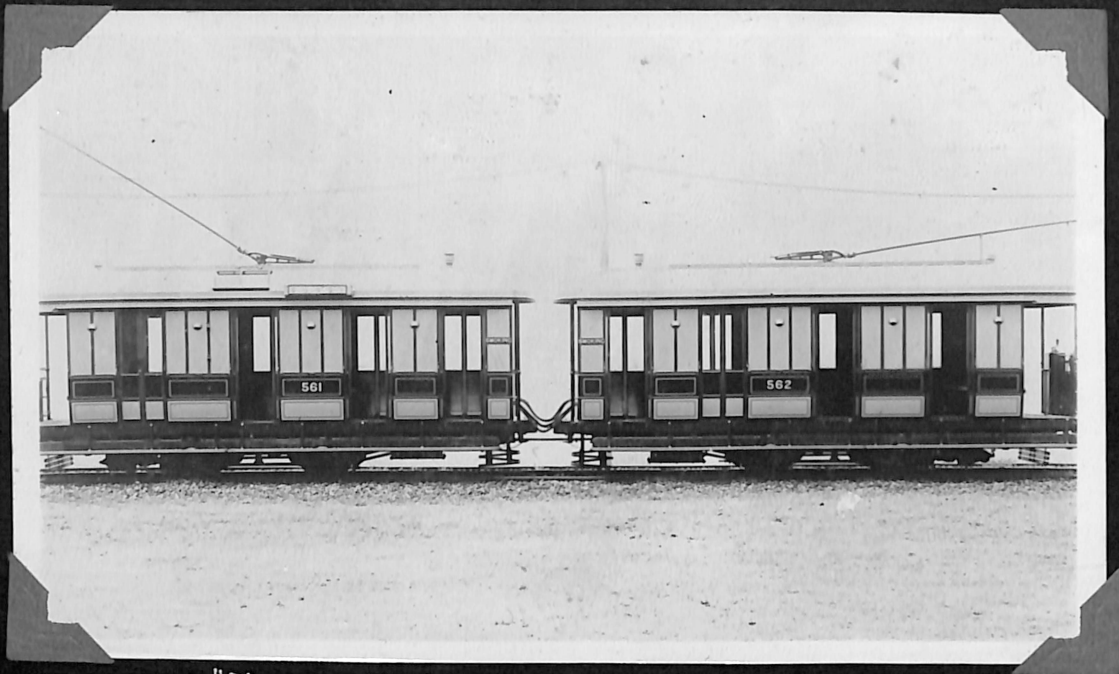


FOUR-WHEELED COMBINATION MOTOR OR TRAIL CAR. *(D Class Trailer)*

| | ft. in. |
|--|----------------------|
| Length over headstocks | 28 0 |
| Length over bulkhead pillars | 23 0 |
| Length over saloon body | 19 2 |
| Width | 6 8½ |
| Height from floor to ceiling in saloon | 7 7 |
| Tare, including motor equipments | 8 tons 3 cwt. 2 qrs. |
| Seating capacity | 34 passengers. |

D CLASS TRAILER

N.S.W.T.
SYDNEY SYSTEM.



"E" CLASS

4 WHEEL COUPLED
SETS.

PLACED IN SERVICE
DURING 1901 - 1903.

"E" CLASS NOS 561 & 562 AT BONDI 1912.

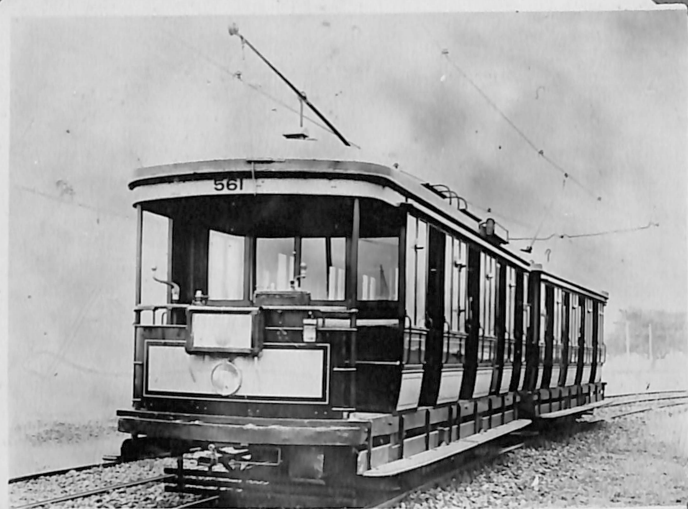


"E" NOS 531 & 532
COMING OUT NTH SYDNEY DEPOT
DEC. 1936.



"E" CLASS. 499 & 500
NEAR HARBOUR BRIDGE. APRIL 1939

"E" CLASS.



"E" CLASS NOS 561 & 562.
MOORE PARK SIDING.



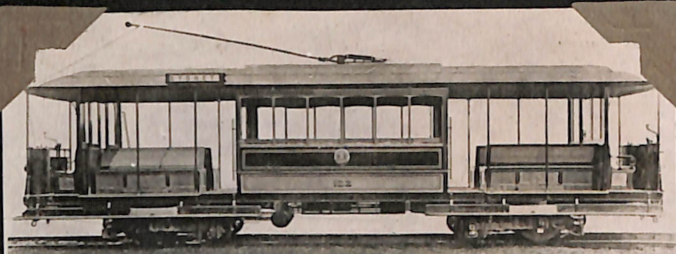
"E" CLASS NOS 529-530 ~~TRAMWAY~~
NEUTRAL BAY.



"E" CLASS NOS 525-526
NORTH SYDNEY DEPOT.



"E" CLASS NOS 396, 397 & 426, 425
ON RAILWAY RAMP 1912.



Bogie Combination Motor Car (F Type).

| | ft. in. |
|--|-----------------|
| Length over headstocks | 37 6 |
| Length over bulkhead pillars | 30 3 |
| Length over saloon body | 12 11 |
| Width | 7 11 |
| Height from floor to ceiling in saloon | 7 4 |
| Tare, including motor equipment | 15 tons 14 cwt. |
| Seating capacity | 48 passengers. |

The car is arranged with a centre saloon and open compartments, with bulkheads at each end. The seats between the bulkheads and saloon are reversible. The saloon seats are placed longitudinally. Sliding-doors are provided at each end of saloon, and in the bulkheads.

"F"
CLASS
COMBINATION
CAR.
NOW
"LP" CLASS.



NO 127^S. DRIVING INSTRUCTION CAR. DOWLING ST. DEPOT.
EX. "F" CLASS NO 393.



CIRCULAR QUAY. 1908.

"F" CLASS TRAMS. NOS 162, 243 & 197.



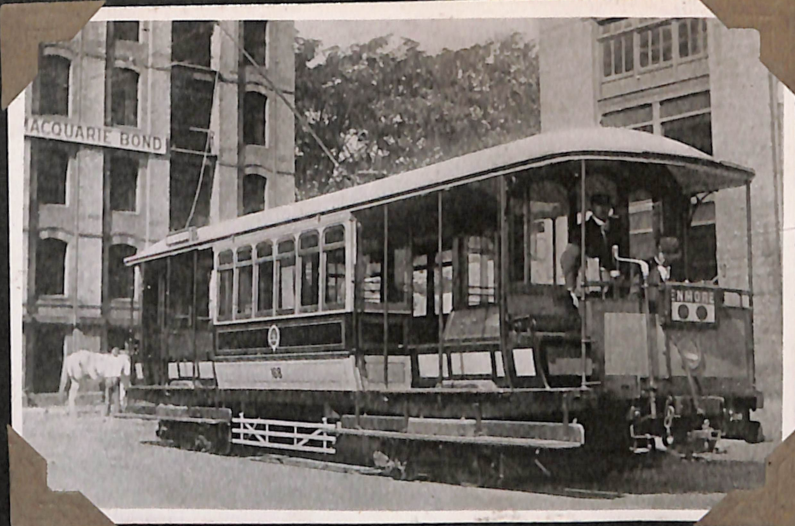
CIRCULAR QUAY 1908

SHOWING C; E; F; AND N CLASS TRAMS.

Circular Quay, Sydney



"F" CLASS AT CIRCULAR QUAY.



"F" CLASS 168
OLD BALLOON LOOP, CIRCULAR QUAY 1905.

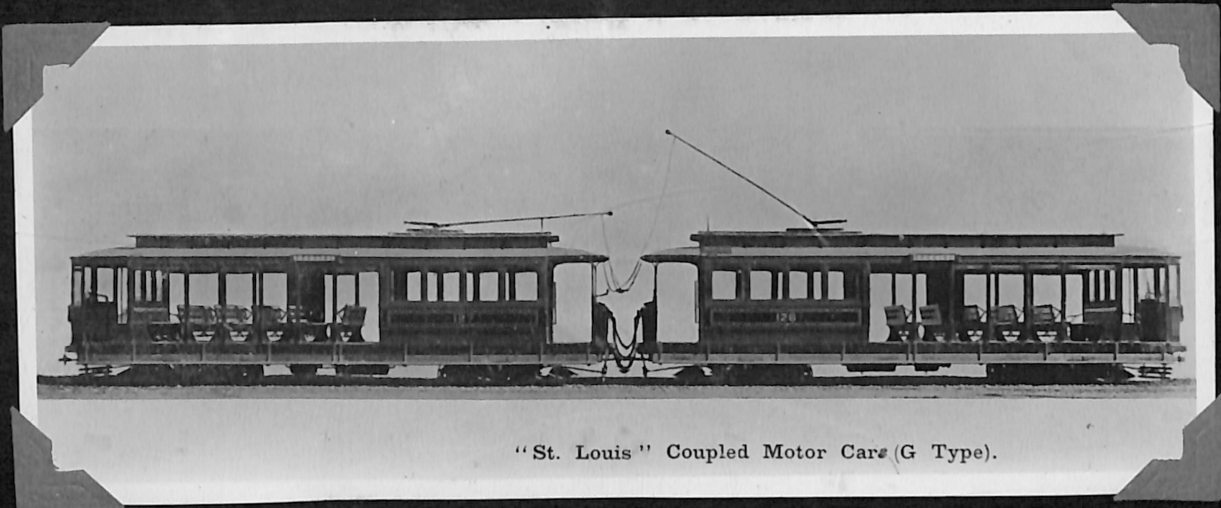


RAILWAY SQUARE, SYDNEY 1907
C CLASS NO 23 & "F" CLASS NO 251



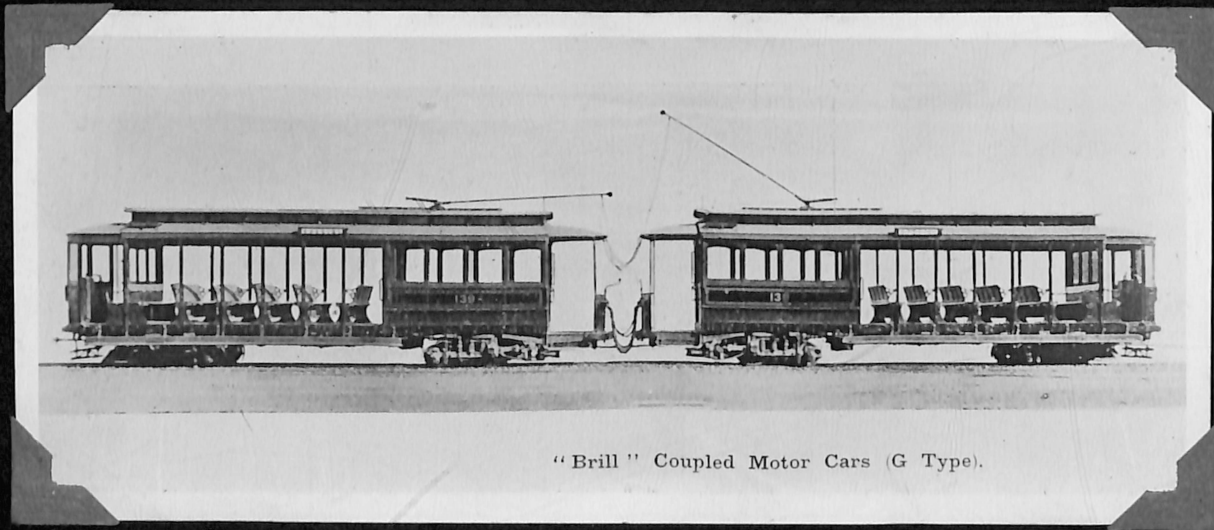
"F" & "C" CLASS TRAMS
GEORGE ST. NEAR BRIDGE ST.
DURING COMMONWEALTH CELEBRATIONS 1901

"G" CLASS
COUPLED CARS.



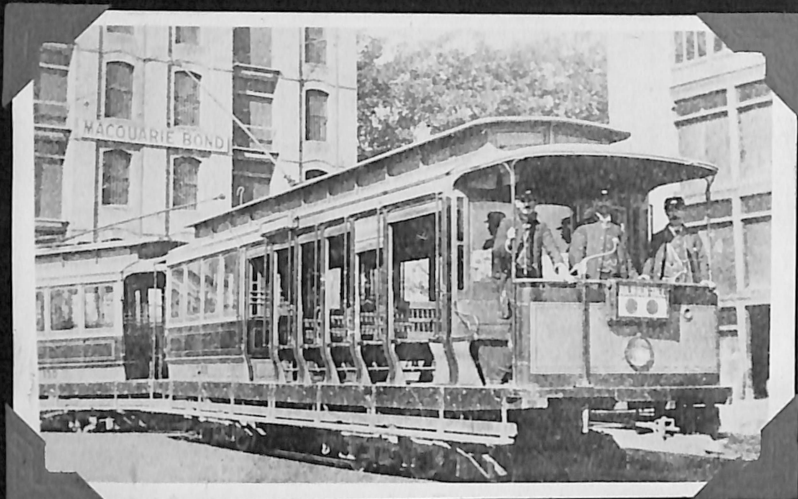
"St. Louis" Coupled Motor Cars (G Type).

"G" CLASS NOS 126-127. BUILT BY ST LOUIS CAR CO. U.S.A. 1900.



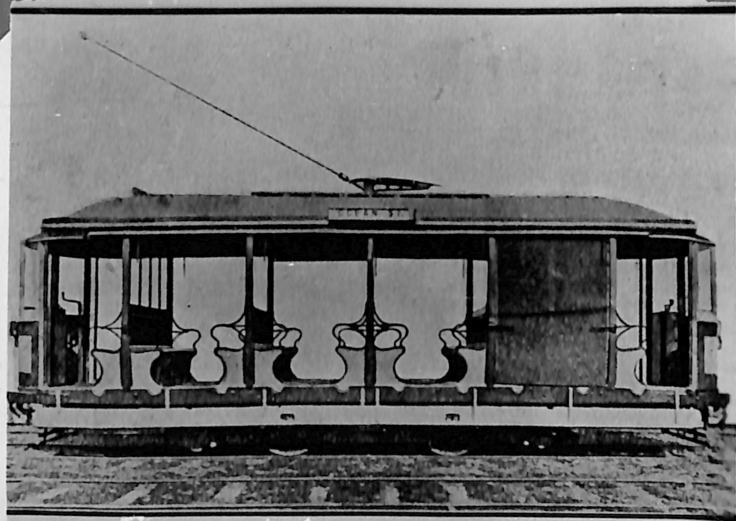
"Brill" Coupled Motor Cars (G Type).

"G" CLASS NOS 138-139 BUILT IN U.S.A. BY BRILL IN 1900.



"G" CLASS NOS 130+131 (ST. LOUIS CARS)
CIRCULAR QUAY BALOON LOOP 1905.

"H" CLASS 4 WHEEL TOURIST TRAM



"H" TYPE TRAM.

Four-wheeled Tourist Car

"H" NO 740 TOURIST CAR. BUILT IN 1908.
NOW CONVERTED TO SERVICE CAR NO 253



FRONT VIEW OF J CLASS NO 675
QUEENS SQUARE 1912.

"J"
CLASS
4 WHEEL
CROSS SEAT.



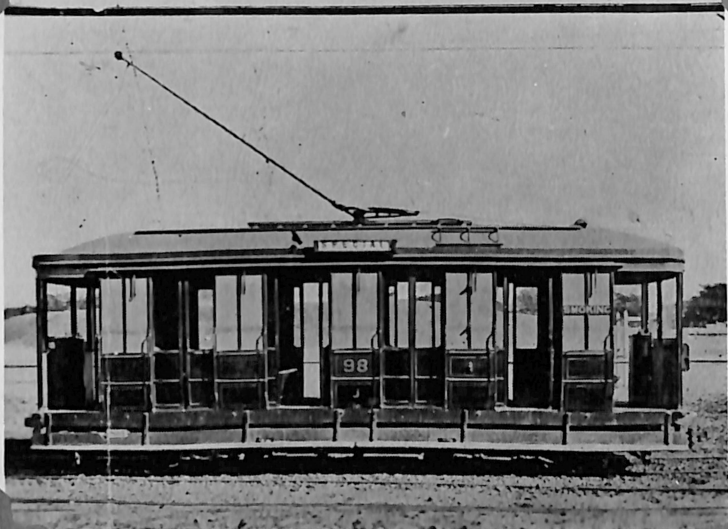
KING ST. CITY IN 1907 SHOWING J CLASS NO 674
BOUND FOR OCEAN ST.



"J" CLASS NOS 666 & 657
ST JAMES SQUARE 1918

J CLASS

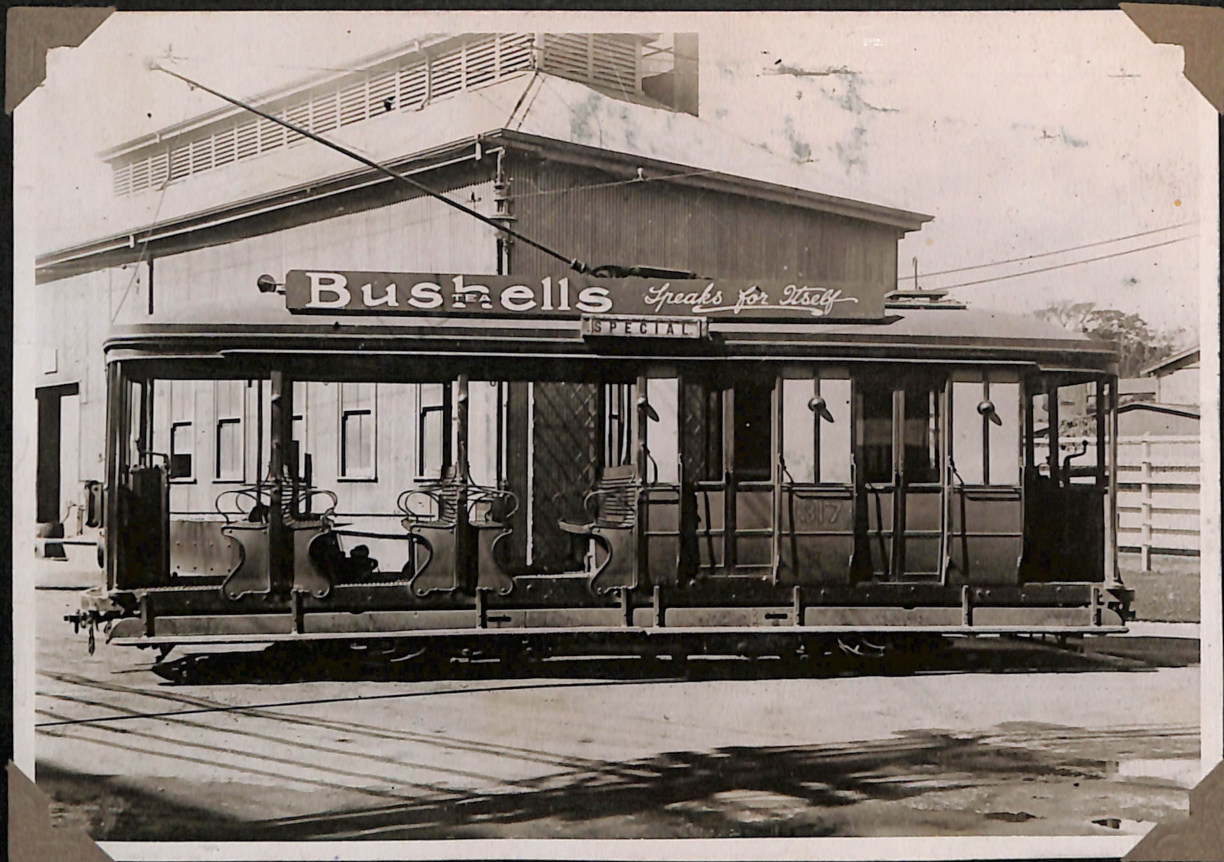
FIRST BUILT IN 1902.



"J" CLASS No 98.



ELECTRIC & STEAM TRAMS AT MANLY WHARF
"J" CLASS ELECTRICS NOS 23 & 25.



"K" CLASS

COMBINATION
CARS.

FIRST CAR
BUILT IN 1908.

"K" CLASS NO 1317
RANDWICK SHOPS 1920.



"K" CLASS 786
FORT MACQUARIE DEPOT.



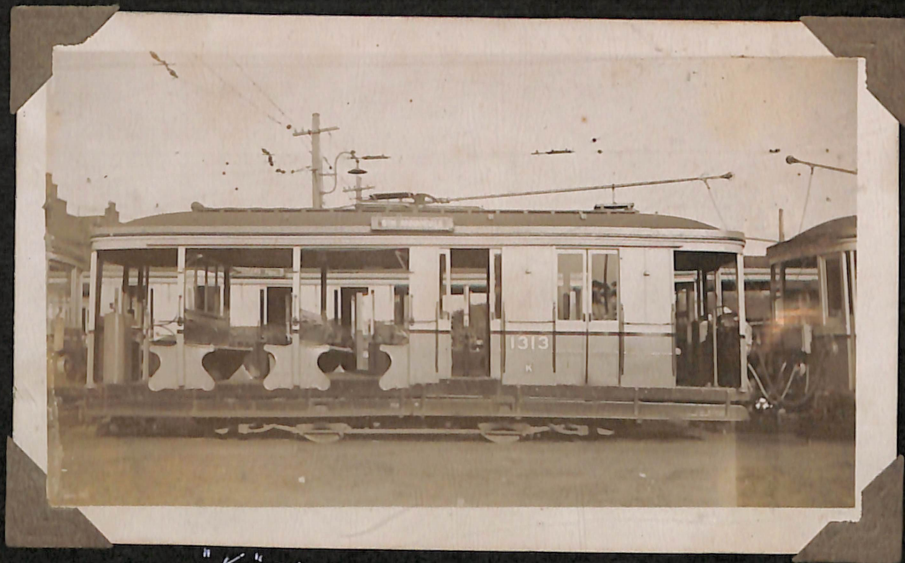
K CLASS CARS.
FORT MACQUARIE DEPOT.



"K" CLASS.
KING ST. SYDNEY.



"K" CLASS NO 1295
LEAVING NEUTRAL BAY WHARF.



"K" CLASS NO 1313
ROZELLE DEPOT.