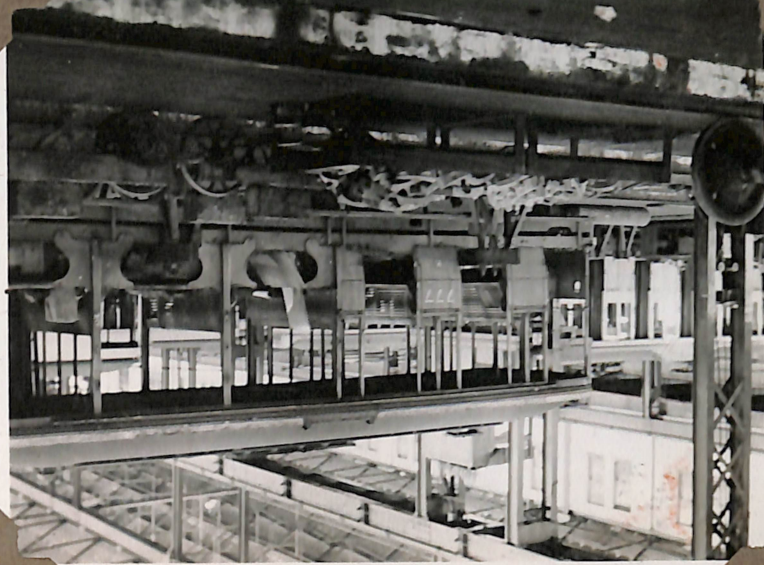
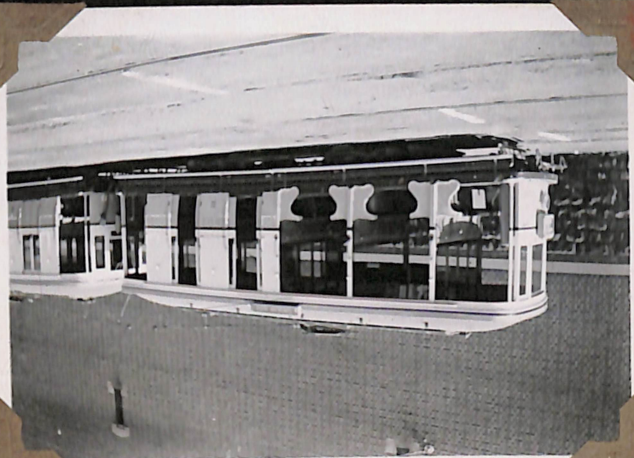


"K" CLASS No 1295
NEUTRAL BAY.



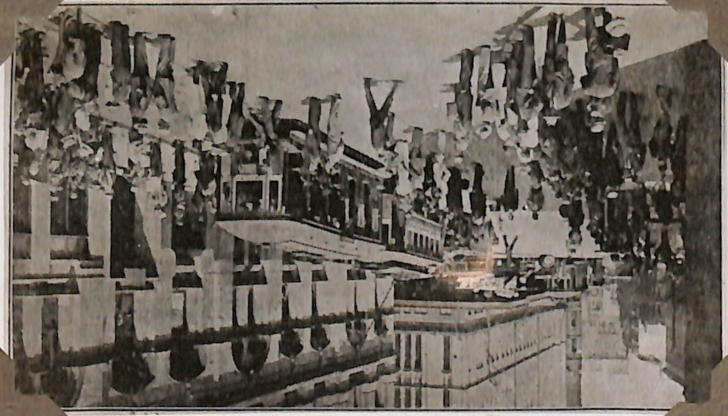
"K"
CLASS

"K" CLASS No 117 BEING SCRAPPED
AT RANDWICK SHOPS.

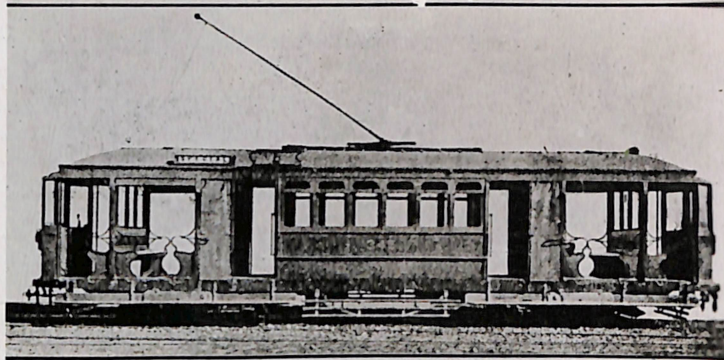


"K" CLASS No 1318
FORT MACQUARIE DEPOT.

BREAKDOWN CAR No 595 HAULING
"K" CLASS TRAM BACK ON RAILS
IN KING ST NEAR CLARENCE ST. CITY
17-11-1933.



N.S.W. TRAMWAY ROLLING STOCK.



"L" TYPE CAR.

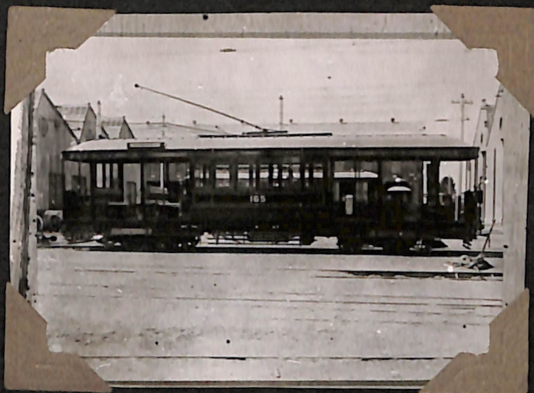
	ft.	in.			
bumpers (each car)	40	9½	Wheel base bogie
body	6	11	Wheel base total
			Wheel diameters	..	2 ft. 9 in.

"L" CLASS NO 345 FORMERLY "F" CLASS CAR.

"L"

CLASS

M.T. TRUCKS.



"L" 165 AT RANDWICK.



"LP" TYPES. 227, 229 AT NEWTOWN BRIDGE JUNCTION.

"LP"
CLASS.
EX
"L" CLASS
M.T.
TRUCKS.



"LP" No 278 FORT MACQUARIE DEPOT.

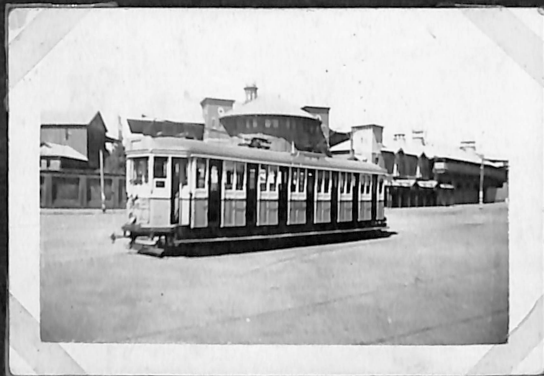


"LP" CLASS No 373 CIRCULAR QUAY.



"LP" 213 CIRCULAR QUAY

LP CLASS.



LP 358 AT SYDNEY CRICKET GROUND.

"LP" No 230 AT ~~ROCKDALE~~ BRIGHTON

LP No 230 IN BAY ST.

1943.

NEAR DEPOT JUNCTION

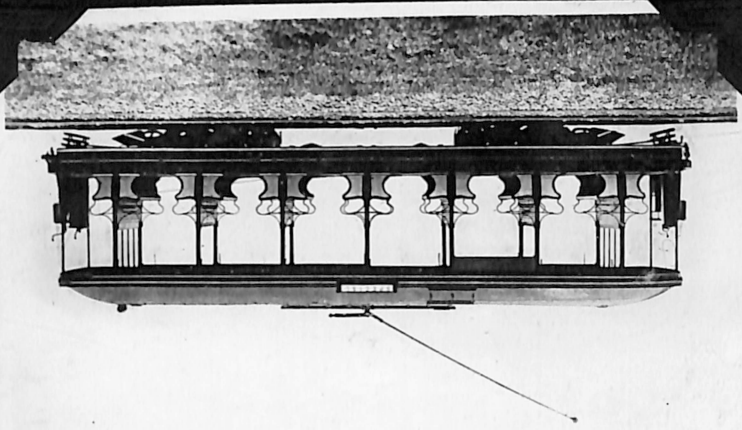
ROCKDALE - BRIGHTON-LE-SANDS LINE

"LP" CLASS 387 & 220

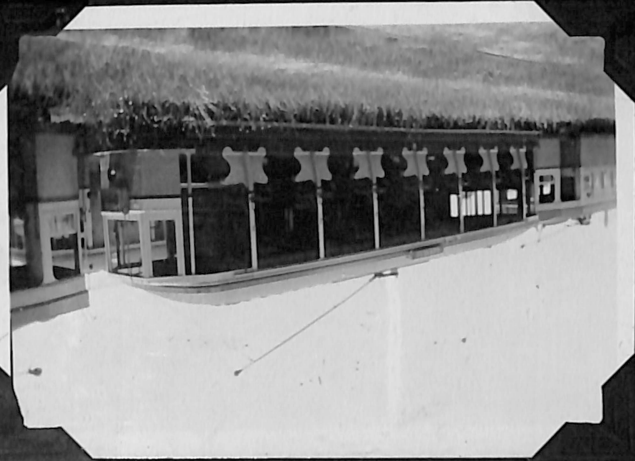
BRIGHTON LE SANDS TERMINUS

16-10-43

"M" CLASS TOURIST CAR.



"M" CLASS No 737 RANDWICK



"M"
CLASS
TOURIST
CARS
Nos
737 + 738
BUILT
1906-07



N-TYPE No 410 taken @ Circular Quay Woolloomooloo Bay

"N" CLASS NO 410 AT CIRCULAR QUAY
LAST DAY OF WOOLLOOMOO BAY SERVICE.



"N" CLASS 614 & "LP" 294

RANDWICK RACECOURSE ABOUT 1920.



1-03.6

614-611



IRON COVE BRIDGE
N CLASS 708.

1946



A Long Bay Tram, Showing the Latest Type of Car.

"N" CLASS 639 AT LONG BAY

"N" CLASS

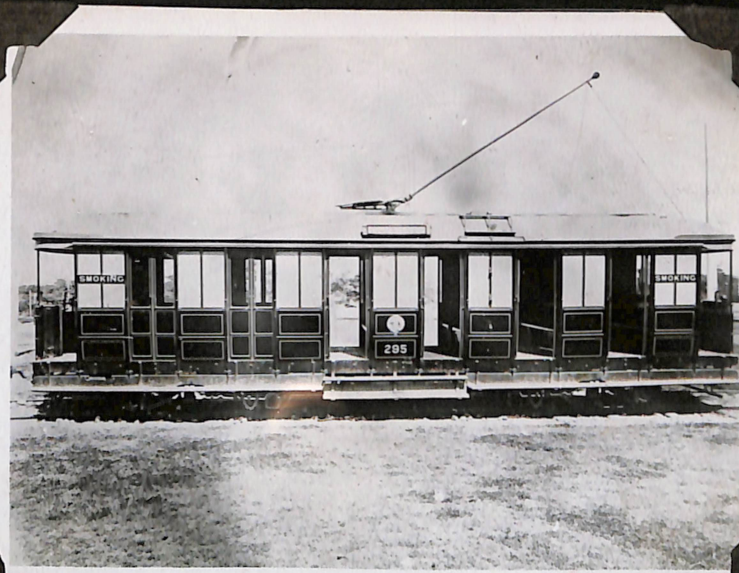
FIRST "N"
CLASS BUILT
IN 1909



"N" CLASS NO 638 BELMORE PARK.



"N" CLASS. 692 CIRCULAR QUAY.



"N" CLASS NO 295 WITH DOUBLE FOOTBOARDS
LATER CONVERTED TO "LP" TYPE.



"N" CLASS NO 400 AT RANDWICK



"N"
CLASS

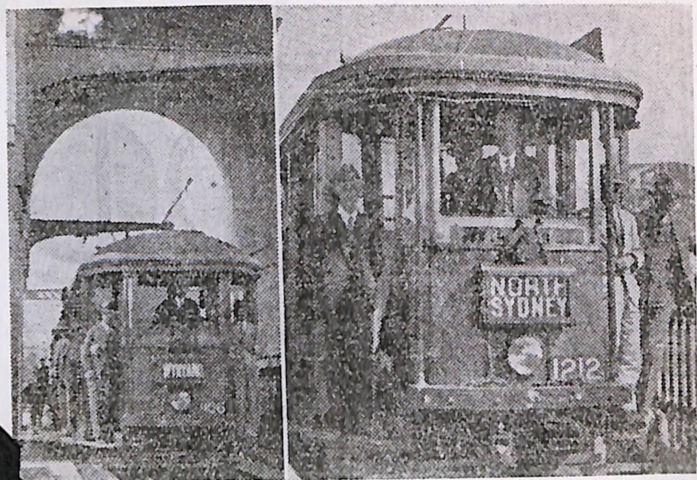
"N" CLASS 421. DARLING ST. BALMAIN
FOUR WHEEL DONKEY IN FRONT OF 421.



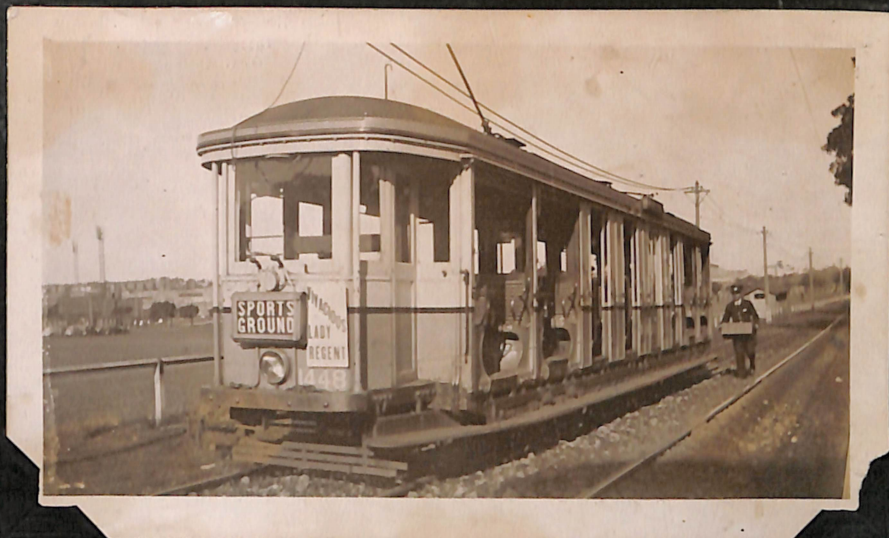
"N" CLASS 693 COMING DOWN RAMP
FROM RAILWAY STATION.



"N" 625 ON RAMP APPROACHING
CENTRAL RAILWAY STATION SYDNEY

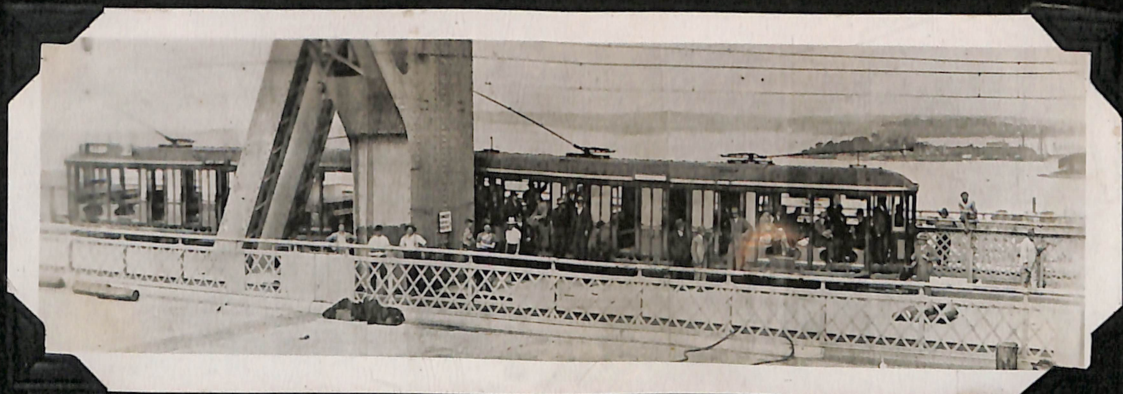


O 1212 @ 1106 CROSSING SYDNEY HARBOUR
BRIDGE FOR 1ST TIME.



"O" CLASS NO 1448 NEWTOWN DEPOT CAR
MOORE PARK.

"O" CLASS FIRST BUILT IN 1908.



E. WILLS DRIVING 1ST TRAMS (O CLASS 1106 + 1212) ACROSS
SYDNEY HARBOUR BRIDGE 9th MARCH 1932.



GEORGE STREET, SYDNEY.

"O" CLASS.



"O" CLASS NO 1467.
FORT MACQUARIE DEPOT.



"O" CLASS 961
CIRCULAR QUAY.



758

Campbell Parade
Bondi Beach
N.S.W.

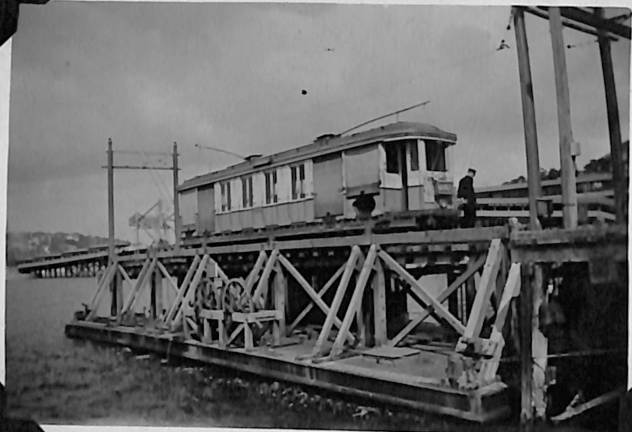
O class.



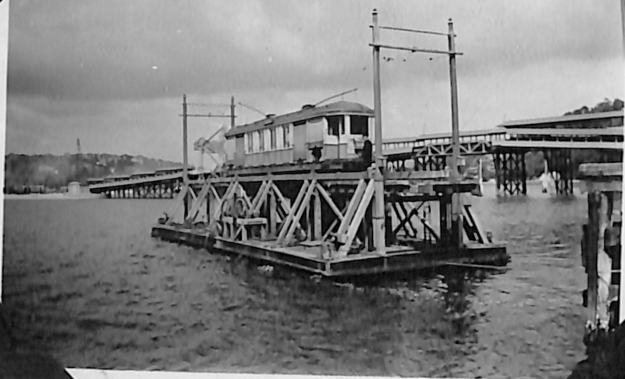
"O" CLASS RANDWICK SIDING.



"O" CLASS TRAMS.
MANLY 1938.



"O" CLASS NO 1128 ON PUNT AT THE SPIT.
20-10-39.



"O" 1128 BEING FERRIED ACROSS
THE SPIT 20-10-39



"O" CLASS 1331 AT THE SPIT 20-10-39



"O" 1331 LAST TRAM ON MANLY SIDE
AT THE SPIT 20-10-39



"O" 1331 ON HILL ABOVE THE SPIT
20-10-39.



"O" CLASS 830 APPROACHING KENSINGTON STOP
ENROUTE TO CIRCULAR QUAY.



"O" CLASS 1208 AT PARSELY LOOP
MANLY LINES.



"O" COUPLED SET
MANLY SIDE OF THE SPIT.



"O" CLASS 918 NTH SYDNEY DEPOT.



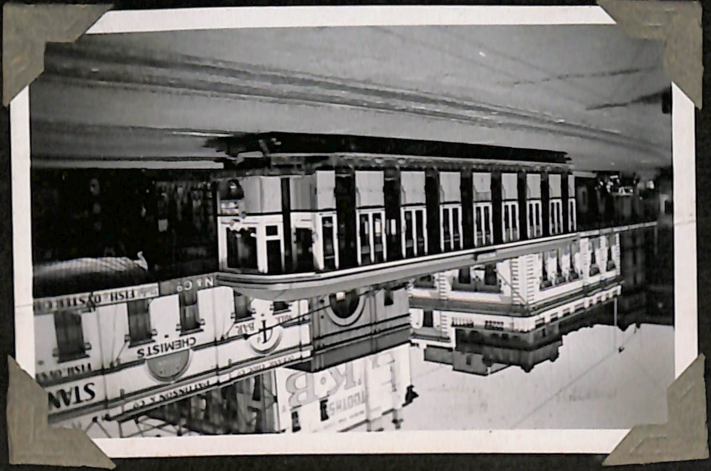
"O" CLASS

"O" TYPE NO 1346.



"O" 1266 + "R" CLASS TRAMS AT ATHOL.

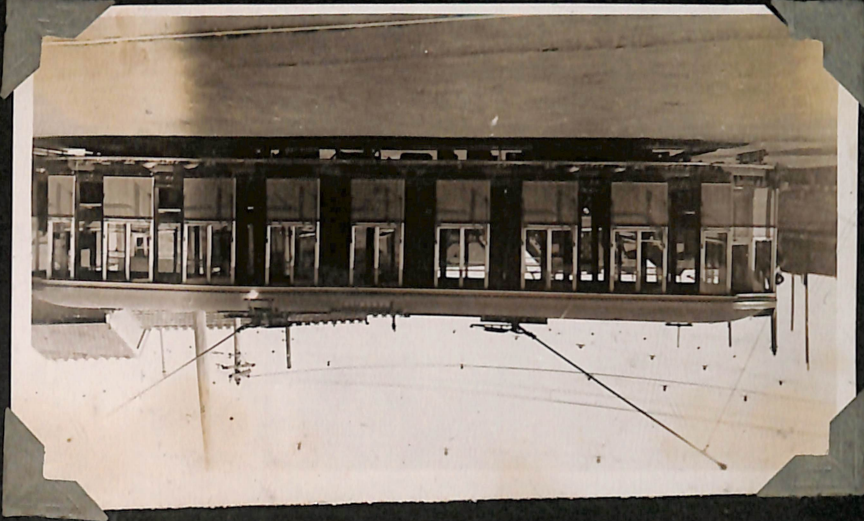
"O P" Type
CONVERTED FROM "O" CLASS CARS.



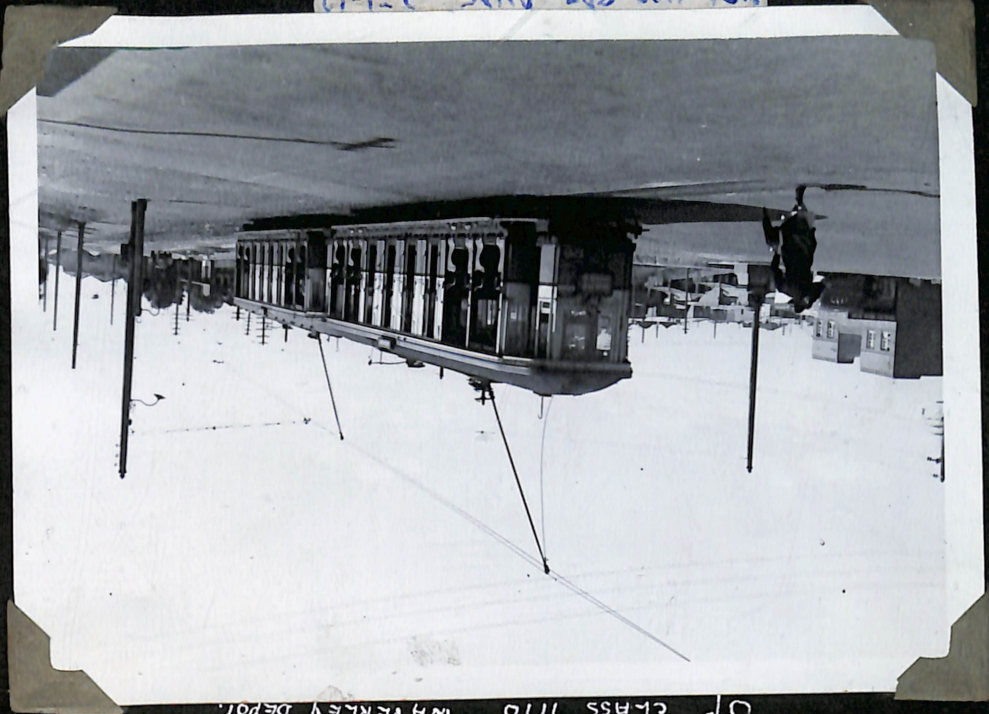
"O P" CLASS No 1372 CIRCULAR GUAY.



"O" No 1443 partly converted to
an O P type
Circular Guay June '46.



"O P" CLASS 1170 WAYERLEY DEPOT.



"O" - 1120-829 RYDE 2-1-46