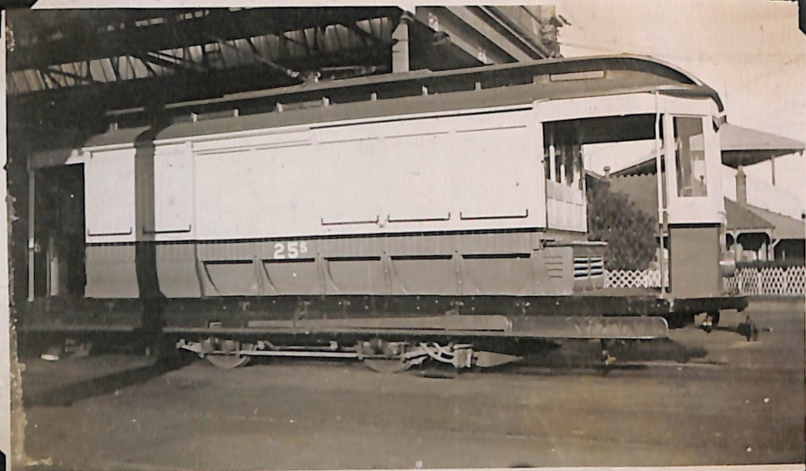


*Service Cars.*



*Breakdown car N° 25<sup>s</sup> at Rozelle Depot.*

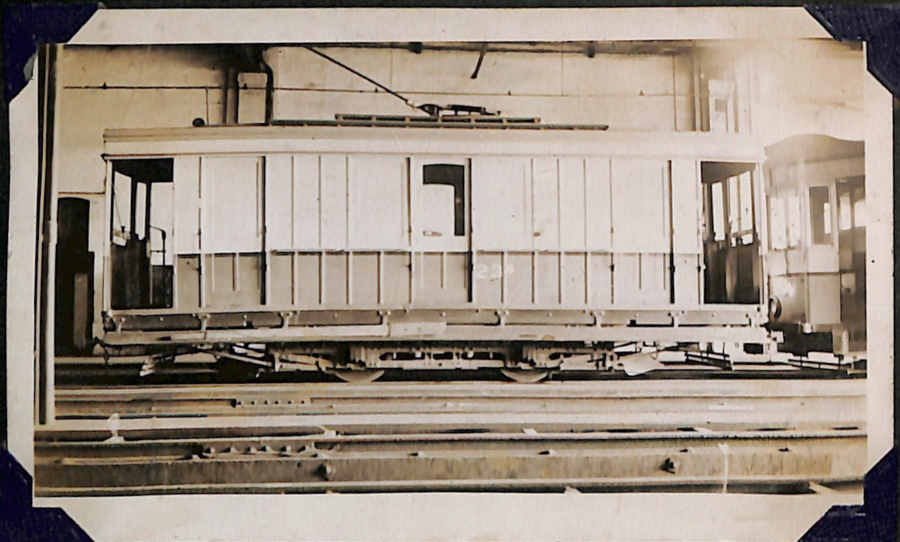


*Breakdown car N° 25<sup>s</sup>  
at Rozelle -depot.*

*This car was formerly  
"H" class N° 740.*



SERVICE CARS.



BREAKDOWN CAR NO. 23<sup>S</sup> INSIDE ULTIMO DEPOT.



BREAKDOWN CAR. 23<sup>S</sup> AT ULTIMO DEPOT.

# RAIL GRINDERS.



NO 3 RAIL GRINDER BEING FITTED WITH  
NEW BELTS. DEC. 1937.



NO 4 RAIL GRINDER AT ST. LEONARDS  
RAILWAY GOODS YARDS & TRAMWAY PERMANENTWAY  
DEPOT JULY 1939.



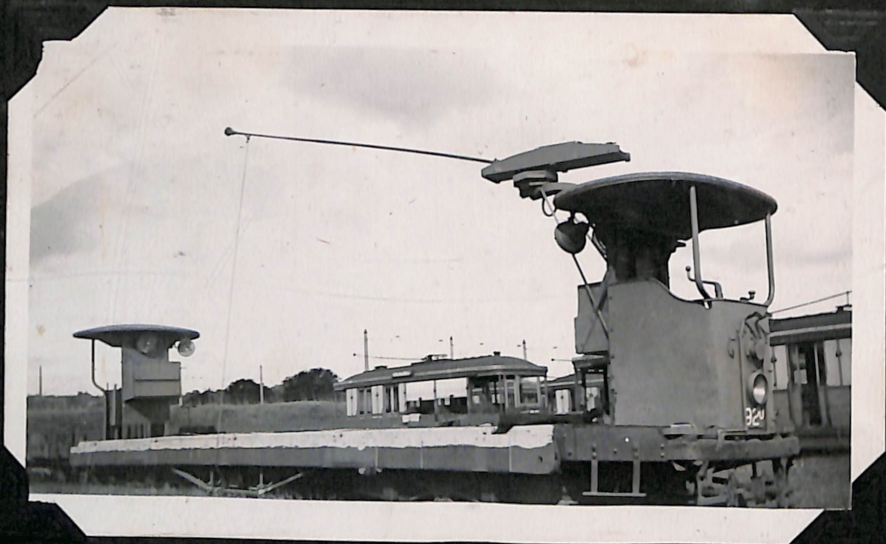


N<sup>o</sup> 123<sup>U</sup> BALLAST CAR. (SIDE DUMPING)

BRIDGE ST YARDS SYDNEY



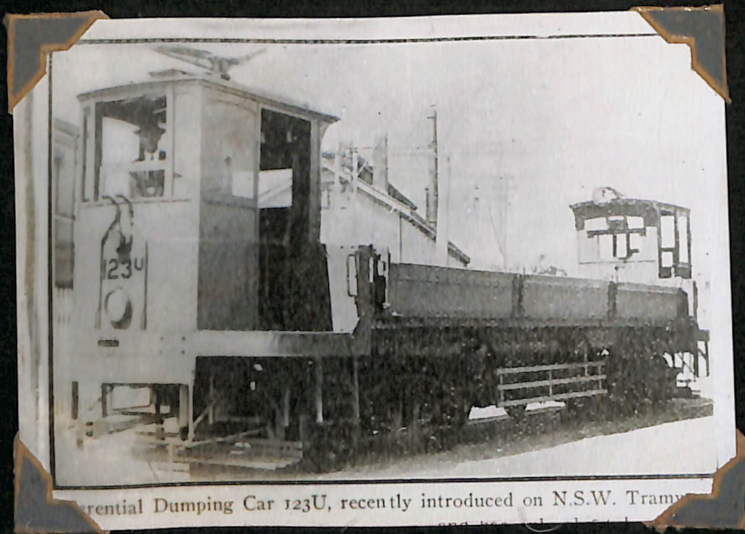
"U" class Ballast Cars.



Ballast car N° 92<sup>u</sup> at Randwick.  
Standard Type



Nos 123<sup>u</sup> & 124<sup>u</sup> side dumping ballast cars.  
Built by Differential Steel Car Co.  
U.S.A.



Differential Dumping Car 123U, recently introduced on N.S.W. Trams



Old ballast cars at Randwick  
Nos 96<sup>u</sup>, 88<sup>u</sup> and 87<sup>u</sup>



"U" CLASS SERVICE CARS.



TOWER WAGON No 994 AT ST LEONARDS  
CAR USED ON THE UNDER-GROUND & NORTH SHORE  
SYSTEMS.



TOWER WAGON 994 AT ST LEONARDS SIDING.



"V" CLASS BALLAST TRAILERS.



NO 72<sup>V</sup> BALLAST TRAILERS  
AT KENSINGTON.



"C" CLASS TRAMS & BALLAST TRAILERS  
AT RANDWICK SHOPS.

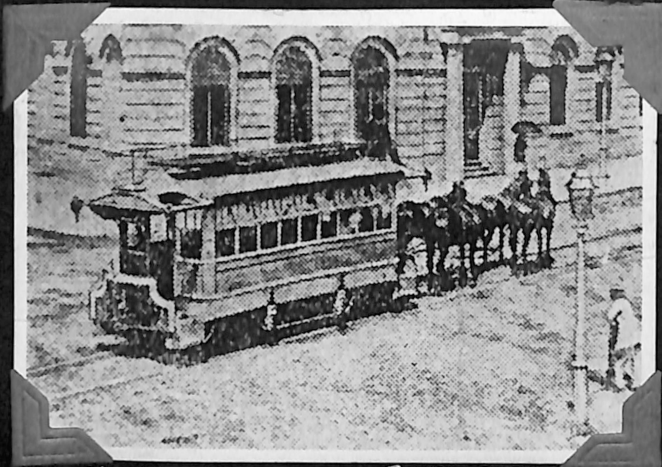




K 768 WITH EYE TESTING CAR N°125 BEHIND  
BALLAST TRAILER 29 RANDWICK SHOPS



# SYDNEY HORSE TRAMS.



HORSE TRAM IN PITT ST  
ABOUT 1861.



OLD "C" TYPE AS REPLICIA OF 1861  
HORSE TRAM. AT RANDWICK 1938.



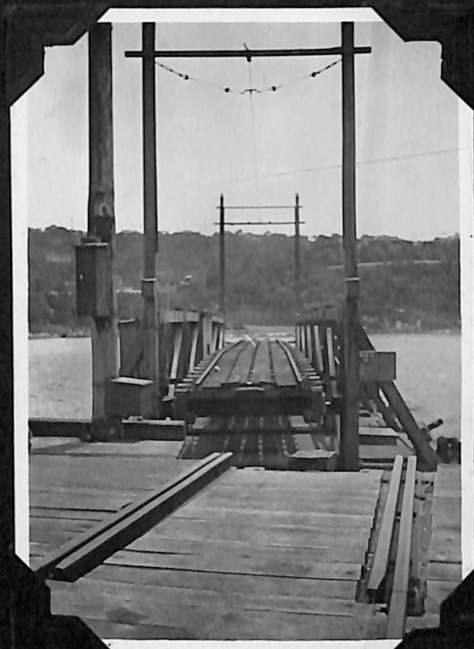
Well, if it isn't the 1 h.p. Golden Arrow, 1893 model (and earlier)!!  
All the way from Newtown station to St. Peters station—yes, sir—  
and back again.

NEWTOWN STATION TO ST PETERS STATION  
HORSE TRAM:  
SERVICE COMMENCED IN 1893

The Spit Tram Punt.



side view.

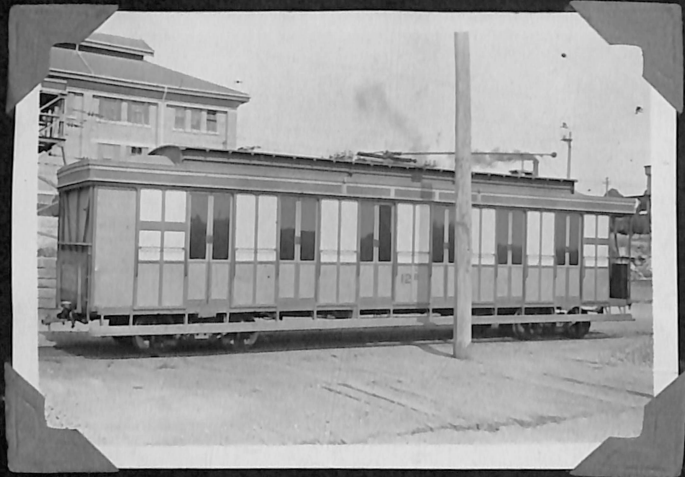


End view



General view of tram punt  
Boxing Day 1938.





The Eye Testing Car N° 12B at  
St Leonards Yards.  
Car was a former steam trail car  
N° 12B. built in 1891 & converted in 1909.

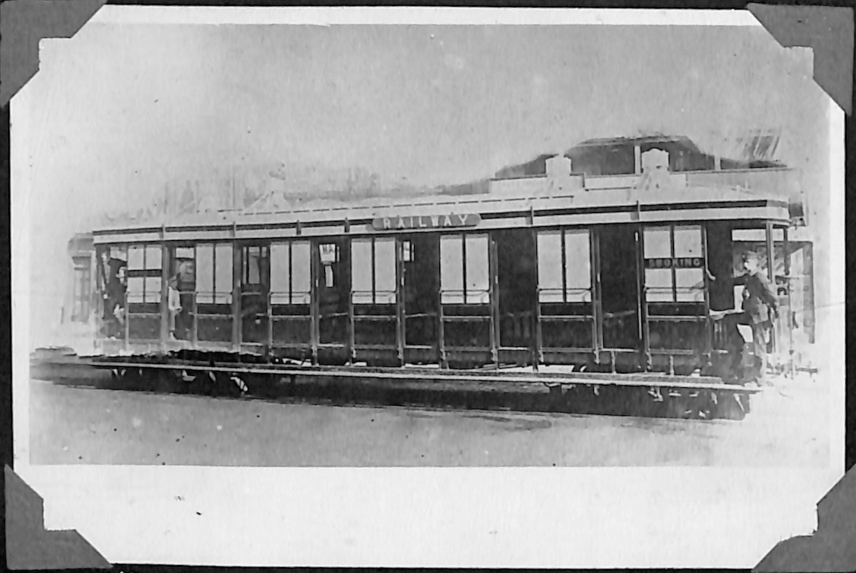


GENTLE ANNIE OR L707 EX "U" CLASS  
AT ASHFIELD.



"GENTLE ANNIE" WITH GLASSED IN  
CONTROL PLATFORMS.





NO 192 ACCUMULATOR CAR BUILT IN 1893  
WAS CONVERTED TO STEAM TRAILER IN 1895.



NO 1 TROLLEY BUS PARK ST. SYDNEY.





LA PEROUSE

CIRCULAR QUAY, SYDNEY,  
ABOUT 1916.

O TO Ft. MACQUARRIE



"L" COUPLED SET  
CIRCULAR QUAY





138

CIRCULAR QUAY  
SYDNEY N.S.W.





808 B.

Coogee Beach N.S.W.

"O" CLASS AT COOGEE BEACH TERMINUS.



O 1049 CROYDON PARK



"O" NEAR GALE & TENYSON STS.  
CONCORD.



# TRAM DIVE IN HARBOR: FOUR HURT

SYDNEY, Sun. — A Taronga Park Zoo-Wharf tram crashed through the stop buffers today and leapt 60ft. through the air into the harbor.

The conductor, a Dutch migrant, is in hospital with head injuries, but the driver and the only two passengers, a man and a woman, escaped with shock and minor injuries.

Before it hit the buffers the tram skidded downhill for a mile out of control.

The wheels failed to grip the greasy rails.

The driver and conductor jumped out before the tram ended its wild dash but the passengers, although warned, stayed aboard.

**And here**

