



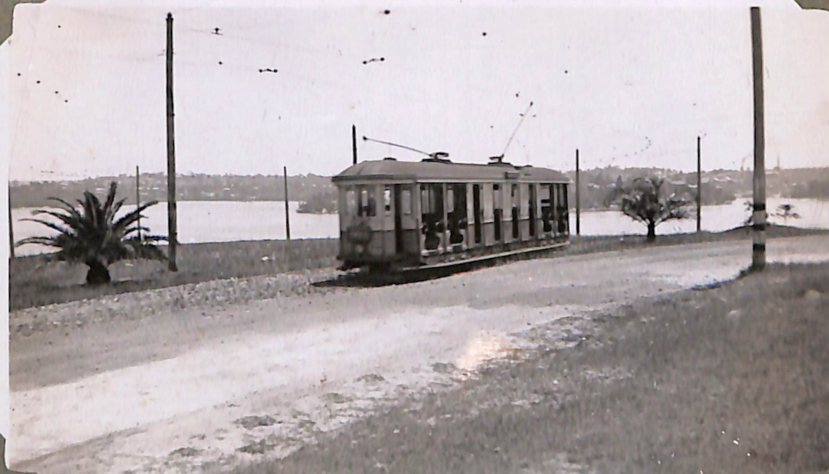
"O" 1048 AT CABARITA JUNCTION



"O" 1044 AT CABARITA JUNCTION.



"O" 1044 ON BALLOON LOOP  
CONCORD TERMINUS.



"O" 1044 CONCORD TERMINUS



Mortlake - Burwood - Ashfield system



"O" CLASS 1055 NEAR MORTLAKE TERMINUS.



"O" CLASS NEAR MORTLAKE TERMINUS



"O" CLASS 1059 AT BURWOOD RAILWAY STATION.



"O" CLASS 1044 AT TERMINUS  
NEAR ASHFIELD RLY. STATION.





LAST MANLY TRAM: 2.10.1939

"O" 816 MANLY WHARF AT 1-30AM.

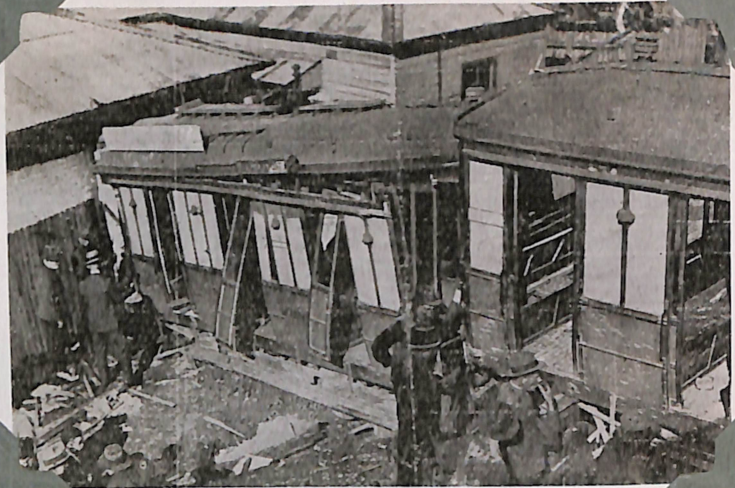


"O" CLASS CIRCULAR QUAY.



Eastleigh St. Sydney

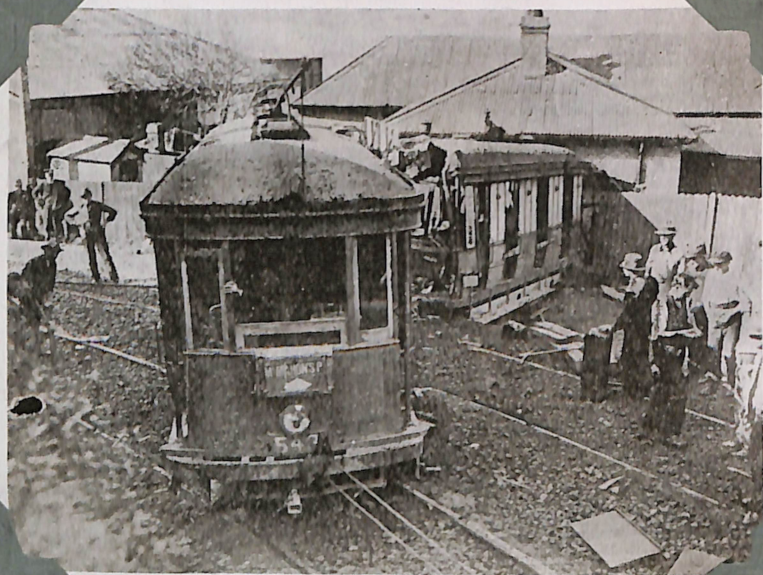




Mc MAHONS POINT SMASH 1924



PHOTO SHOWS REAR CAR  
Mc MAHONS POINT SMASH 1924.



Mc MAHONS PT. SMASH 1924.



Aug 1929  
Result of smash on single line  
between Park and Gap loops  
Watson's Bay line Aug. 1929. "K" CLASS TRAMS.





"J" CLASS NO 672 OFF TRACK IN NEW SOUTH  
HEAD ROAD DOUBLE BAY ABOUT 1927.



"O" CLASS 885 IN COLLISION WITH MOTOR LORRY  
ON GLEBE IS. BRIDGE, WHILST BOUND FROM RYDE.  
26-3-41.



"O" 1364  
RESULT OF COLLISION WITH LORRY  
MITCHELL ROAD ALEXANDRIA.





"R" CLASS 1876  
WHICH COLLIDED WITH AN "O" CLASS  
AT MILSON'S POINT STR. 27-1-38.



"E" CLASS 527  
SHOWS DAMAGED CABIN  
THE SPIT. 7-12-1933





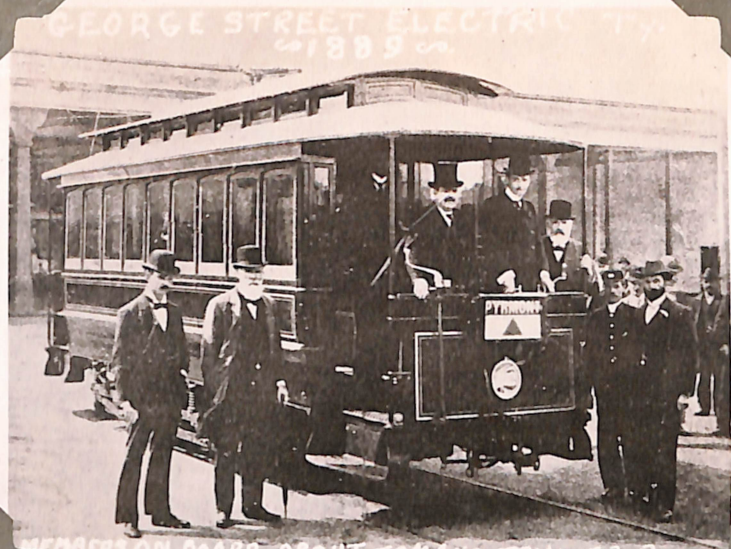
3350  
C.C.

Showing Tram, Road & Train  
Harbour Bridge Sydney





"C" TYPE IN PITT ST. (HAYMARKET) SYDNEY.  
ABOUT 1907. LEADING CAR NO. 42



MEMBERS ON BOARD ABOUT TO MAKE TRIAL TRIP

"C" CLASS IN GEORGE ST. IN 1899



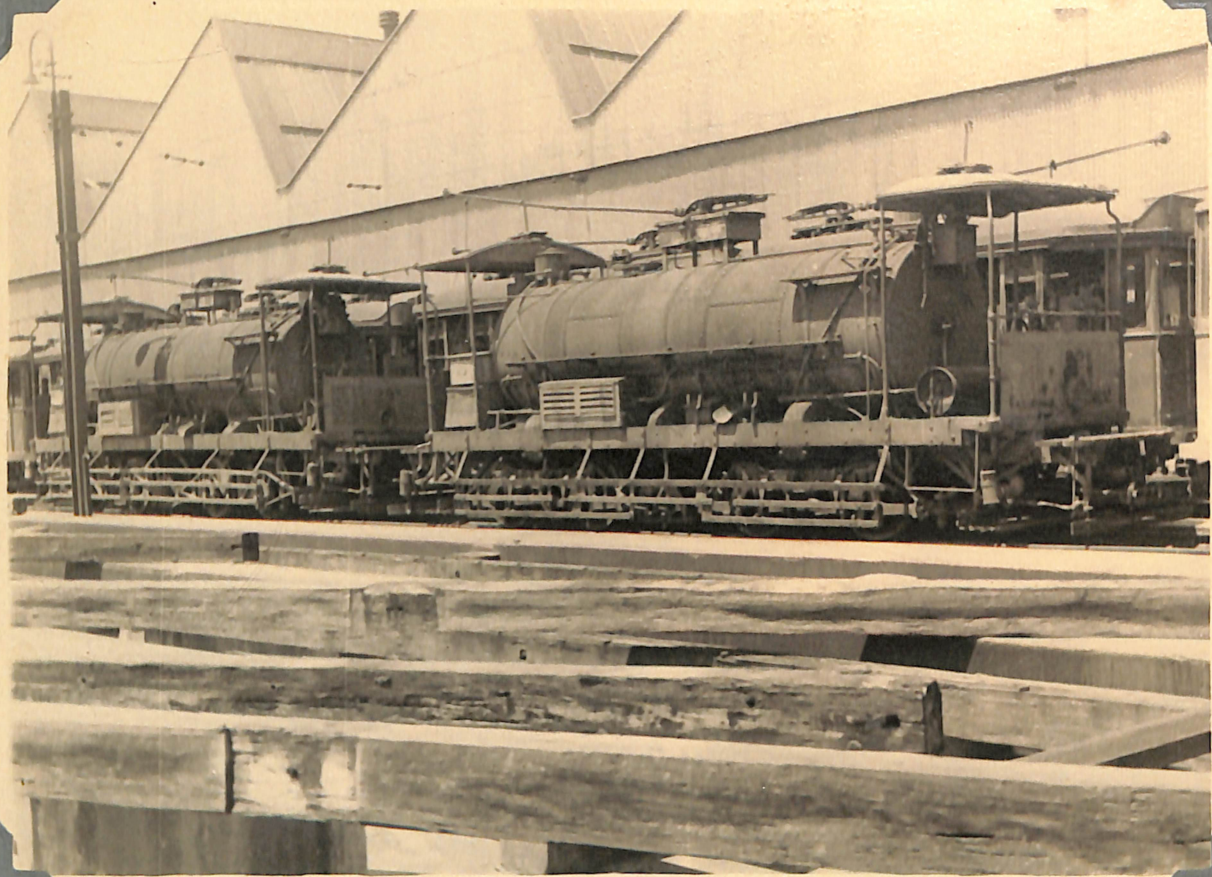
"C" CLASS & "E" CLASS IN PITT ST.



JUNE, 1924.—The Arcade at Milson's Point, where for many years most of the trams on the northern side of the harbour connected with the North Shore ferry steamers. The old Milson's Point railway station was adjacent to the arcade on the right. The photograph was taken just prior to the demolition of the arcade.

"C & D" CLASS TRAMS.  
NORTH SYDNEY SYSTEM.





WATER TRAMS 29<sup>w</sup> & 32<sup>w</sup> GORDON AVE DEPOT NEWCASTLE. FEB. 45.





"LP" COUPLED SET. 267 & 174  
WALLSEND TERMINUS, NEWCASTLE



LP 704 OVER PIT'S  
GORDON AVE. DEPOT. NEWCASTLE



LP N<sup>o</sup> 177 GORDON AVE DEPOT 28-8-47  
CAR OUT FROM PAINT SHOP.



COUPLED SET OF "LP" 172 & 232  
HUNTER ST. NEWCASTLE.  
27-12-41.



N.S.W.G.T. NEWCASTLE SYSTEM.



"LP" TYPE 311, 140 & 345  
NEWCASTLE BEACH TERMINUS.



"LP" 236 AT  
WARATAH TERMINUS.



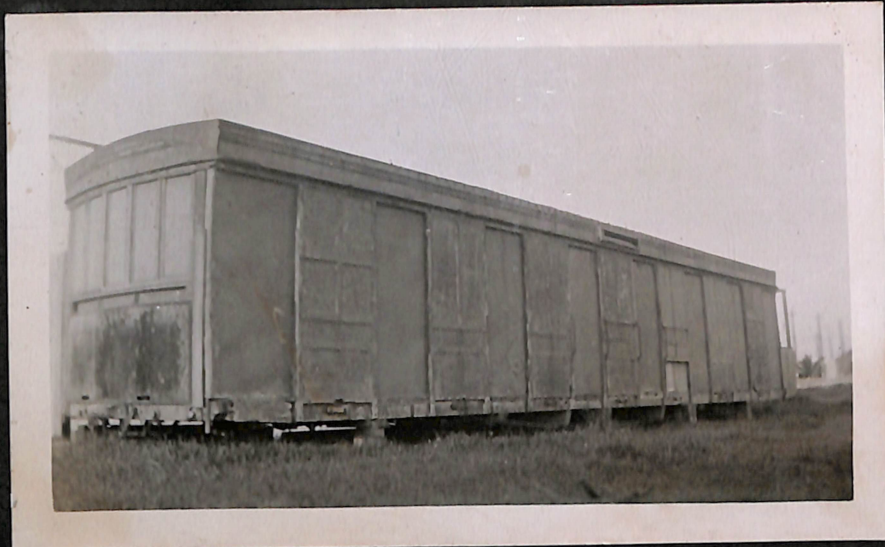
TEMPORARY BODY TRUCKS  
GORDON AVE DEPOT NEWCASTLE



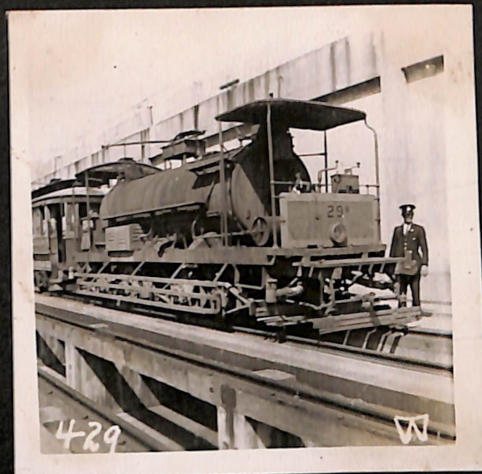
"LP" 168  
WALLSEND TERMINUS.



N. S. W. G. T. - NEWCASTLE SYSTEM.



REMAINS OF OLD ACCUMULATOR CAR AT GORDON AVE  
NEWCASTLE  
ORIGINALLY NO 192 AND FINALLY NO 2B.



WATER TRAM 29W  
GORDON AVE DEPOT  
NEWCASTLE



THE NEW & THE OLD (WALLSEND)  
WALLSEND TERMINUS.  
"LP" 195 AND MOTOR 73A.



"LP" CLASS 311 WALLSEND TERMINUS.



N.S.W.G.T.

NEWCASTLE  
SYSTEM.



Hub ter St  
Newcastle

16

"LP" TYPE NO. 304.



HEARSE CAR 455  
GORDON AVE. DEPOT NEWCASTLE  
1947.



HEARSE CARS 275 & 455.

GORDON AVE. DEPOT  
NEWCASTLE.





"LP" CLASS NO 252.



"LP" CLASS NO 704  
THIS CAR COLLIDED WITH 252 AT THE BANK CORNER  
NEWCASTLE.



1315 GRINDER  
HAMILTON DEPOT FEB. 1945



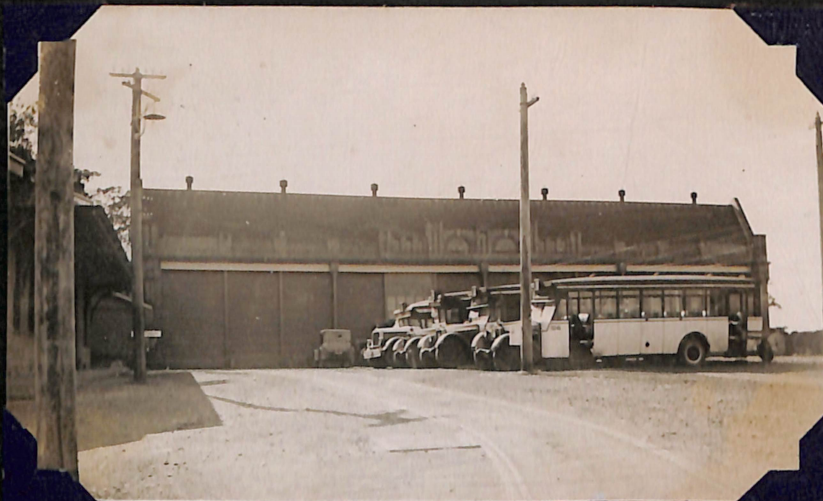
SYDNEY TRAM DEPOTS.



"O" CLASS NORTH MANLY DEPOT



"O" CLASS NORTH MANLY DEPOT.



EX LEICHHARDT TRAM DEPOT  
NOW MOTOR BUS WORKSHOPS.



ENFIELD DEPOT  
BURWOOD LINES.  
SHOWING "O" CLASS TRAMS & BREAKDOWN CAR 115'S.



SYDNEY TRAM DEPOTS.



DOWLING ST DEPOT LARGEST IN SYDNEY.  
27 ROADS UNDER COVER.



NEWTOWN DEPOT.



"R" CLASS TRAMS INSIDE WAVERLEY DEPOT.



"O" class 41 service car Rozelle depot.  
held safely 160 cars on 25 roads.



