



WUPPERTAL (GERMANY)
1953



SEELONG CENTENARY OCT. 1938.

HAMBURG (Western Germany)
1955



LIEGE (BELGIUM)
N°10152 1951



REMSCHIED GERMANY
N°40 (built 1927) 1952

GEE LONG



THE HAGUE (HOLLAND)
N° 202 BUILT 1948. 1953.

N° 22 AT RLY. STATION.
THIS TYPE BUILT BY PENKELLY. ADELAIDE.

N° 22 AT RAILWAY STATION
GEE LONG.

GEELONG.



EMDEN GERMANY
15-5-53

NO 26 IN MOORABOOK STREET.
EX M.M.T.B. "A" CLASS. NO 64.
MEADOWBANK - BUILDER.

NO 25 IN RYRIE ST. JUNE 1939.

EX M.M.T.B. NO 66.

NO 24 EX M.M.T.B.

IN NEW COLOURS

29-3-48

NO 25 (EX M.M.T.B. 66)

RYRIE ST

JUNE 1939.

NO 25 at North Terminus.

ex M.M.T.B. "A" class car. NO 66



GRANADA (SPAIN)
Nº 2 SALOON.



Nº 941



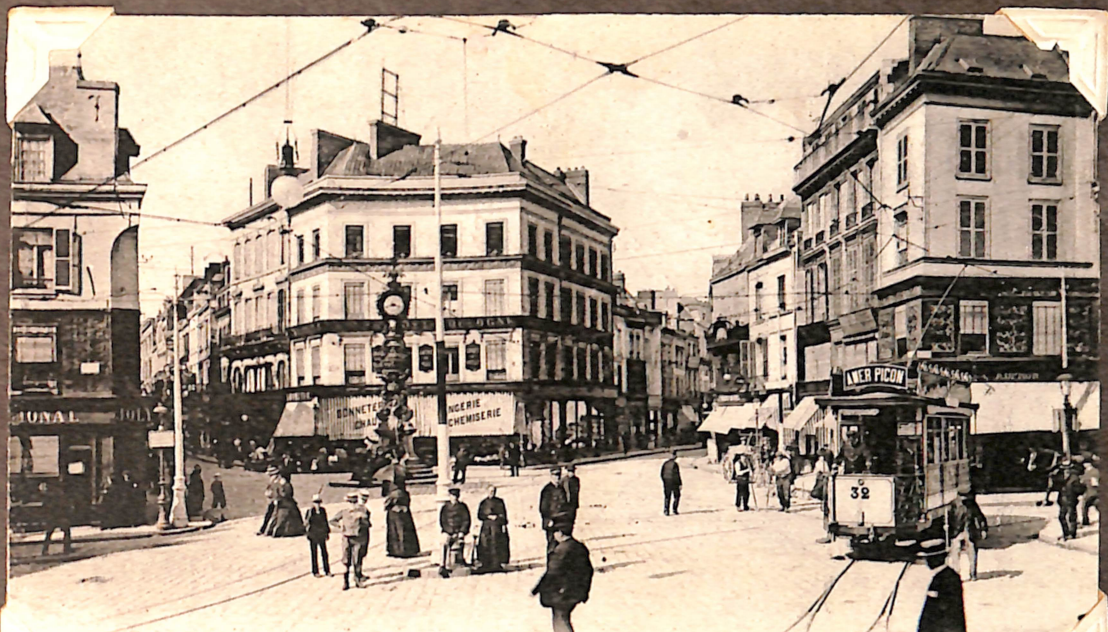
Nº 1052

MADRID (SPAIN) 1952



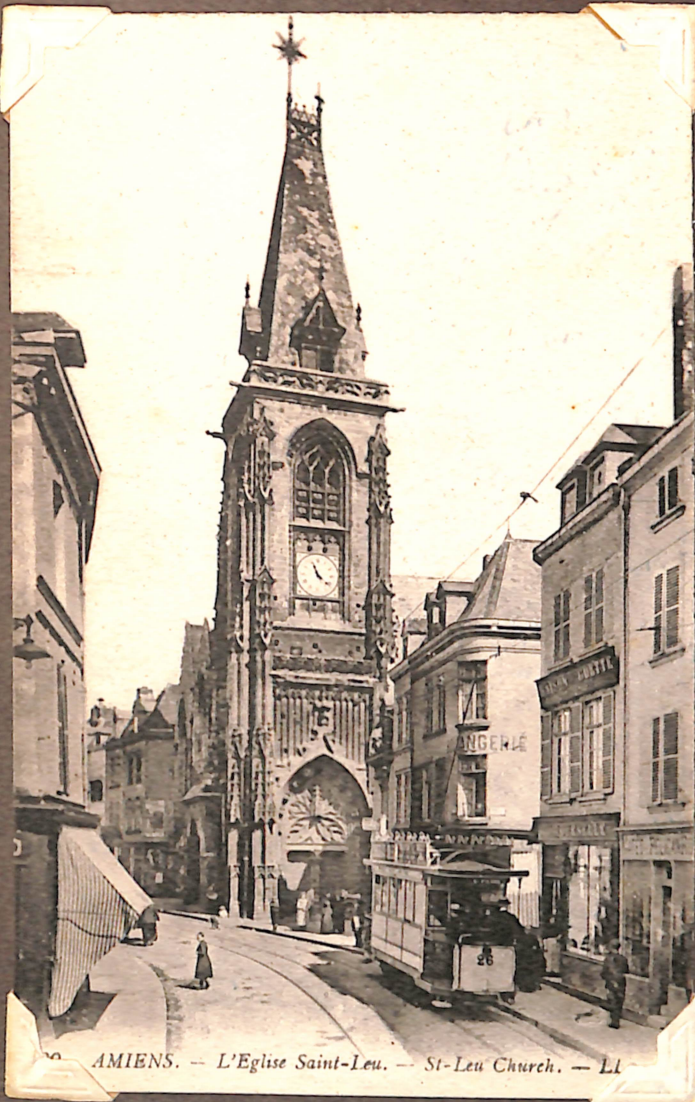
MADRID

Nº 31. (EX M.M.T.B. 118) FIRST BOGIE TO RUN IN GEELONG.
CAR IN RYRIE ST. CROSSING MOORABOOL ST.
13-5-47.



35 AMIENS. — La Place Gambetta. — Gambetta Square — LL.

AMIENS FRANCE N°32



36 AMIENS. — L'Eglise Saint-Leu. — St-Leu Church. — LL

N°26 AMIENS



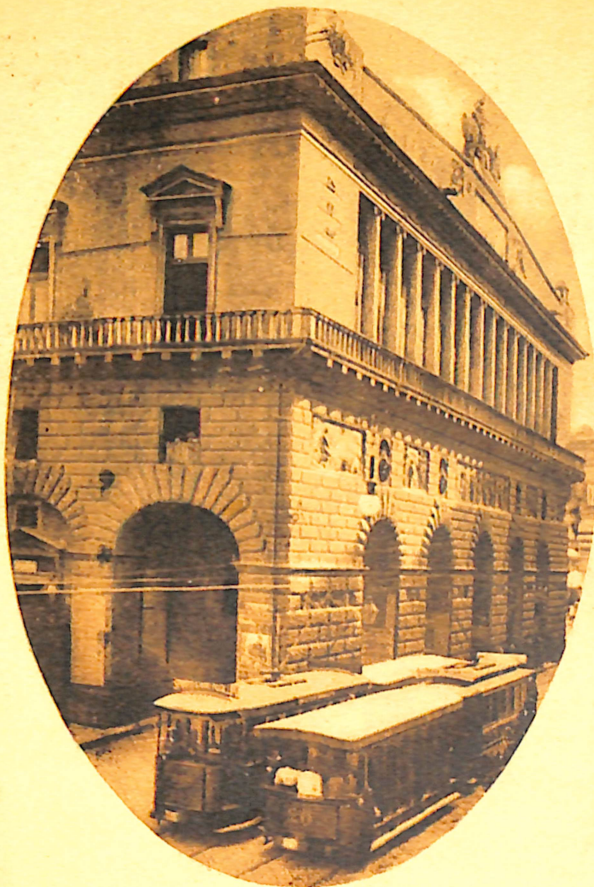
TRIESTE (ITALY)
N°412 BOGIE & TRAILER



Open cross seat tram N°12 at depot. July 1915.
Used by National Defence Association as a
recruiting car.



ROME 1942



Napoli - Teatro S. Carlo

NAPLES (Italy)



1 LE BOURGET-DU-LAC. — LE TERMINUS DU TRAIN. — LL



VALENCIA. (SPAIN)
at Play Station
to Bullring

N^{os} 22, 32 IN MOORABOOL ST
AT RYRIE ST. JUNE '49.

N^o 34 INSIDE N^o 2 SHED
24-6-49.

5013

