



STARK ELECTRIC No. 42.  
CANTON, OHIO, U.S.A.



STARK ELECTRIC No. 18  
CANTON, OHIO.



CHICAGO SURFACE LINES.  
No. R201 SAND CAR  
AT WENTWORTH DEPOT.



INTERCITY RAPID TRANSIT CO. SNOW SWEEPER  
(CANTON TO MASSILON, OHIO.)



LITTLE ROCK, U. S. A. NO 274 ~~SINGLE END~~



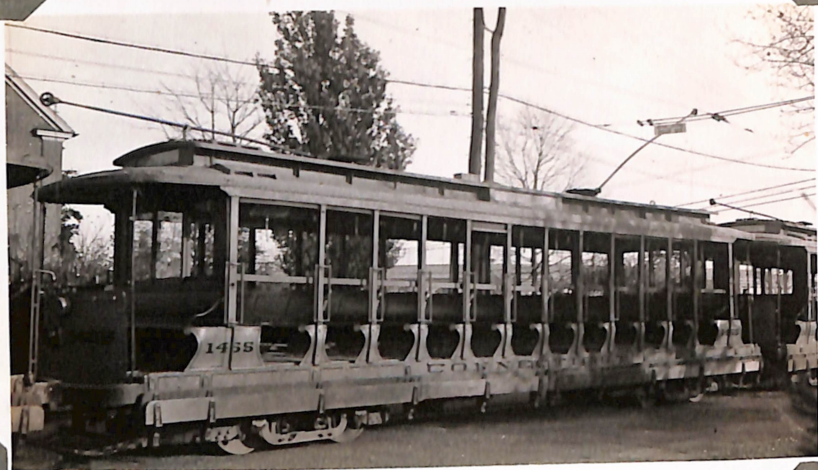
LITTLE ROCK NO 323. SINGLE END CAR.



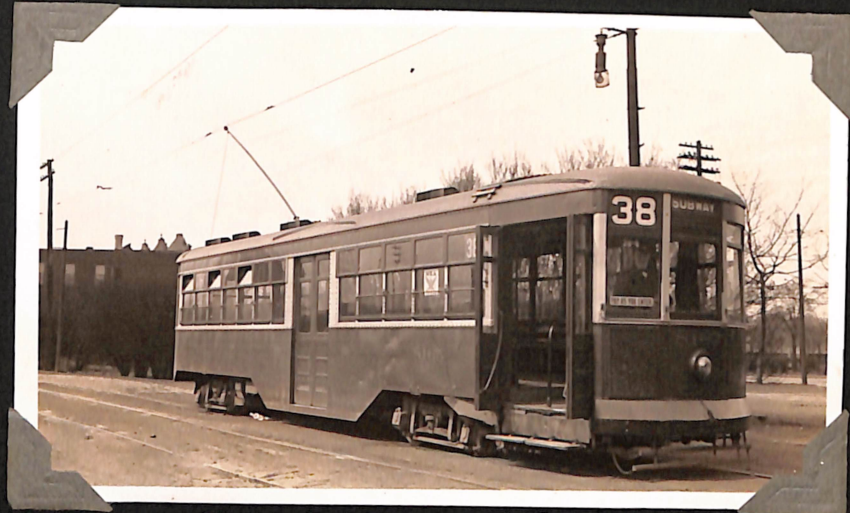
LITTLE ROCK, U.S.A No 403



LITTLE ROCK No 260



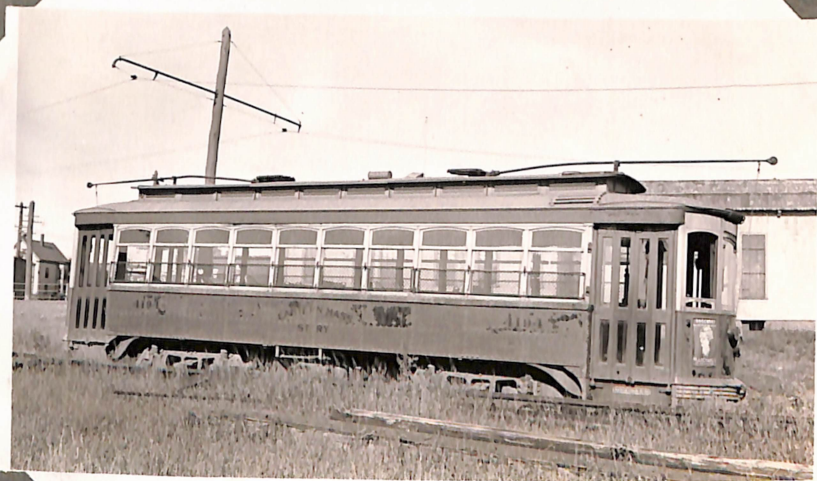
CONNECTICUT CO. NO 1455  
NEW HAVEN U.S.A.



PHILADELPHIA RAPID TRANSIT NO 3165



WORCESTER ST. RAILWAY MASSACHUSETTS.  
NO 401 AT GROVE ST. DEPOT



EASTERN MASSACHUSETTS ST. RLY  
NO 4194 LOWELL, U.S.A.



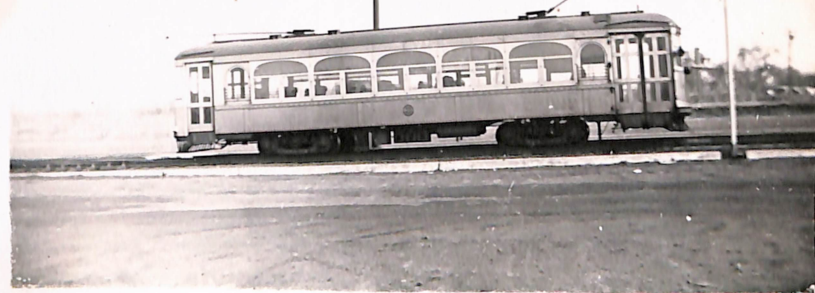
INTERNATIONAL RLY. CO. NO 6264  
BUFFALO, N. Y.



NO C-2 SNOW PLOW. BUFFALO, U. S. A.



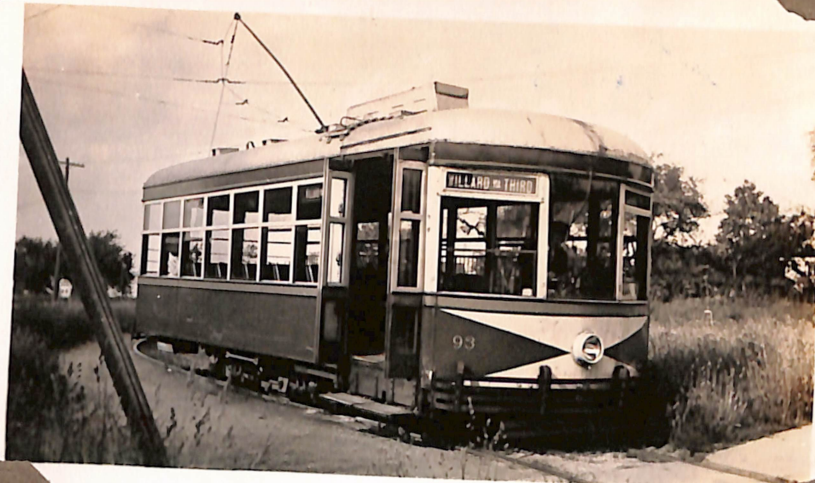
CINCINNATI & LAKE SHORE NOS 209, 206)  
(TOLEDO TO CINCINNATI)



INTERNATIONAL RAILWAY CO. NO 302  
CHEVELAND OHIO. U.S.A



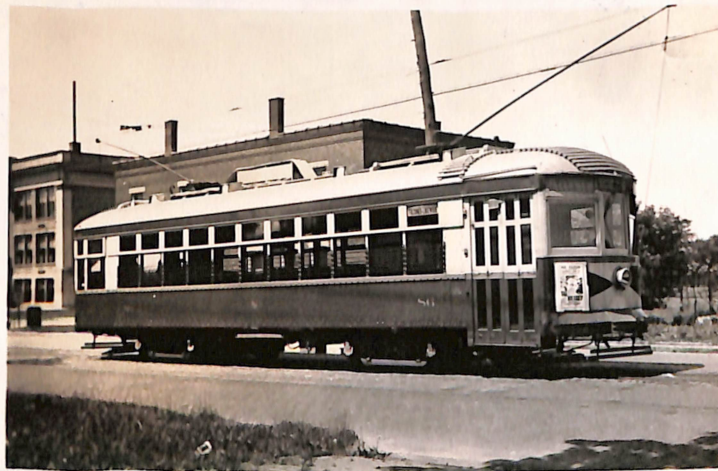
PENN - OHIO LINE "BIRNEY" NO 370  
SHARON TO YOUNGSTOWN



JAMESTOWN ST. RLY. CO  
NO 93 SINGLE END BIRNEY CAR  
JAMESTOWN, N.Y. U.S.A.



NO 411 "BIRNEY"  
NEW YORK & QUEENS LINE  
NEW YORK CITY



JAMESTOWN ST. RLY. CO. NO 86  
JAMESTOWN, N.Y. U.S.A.



NORTH COAST TRANSPORTATION. No 51



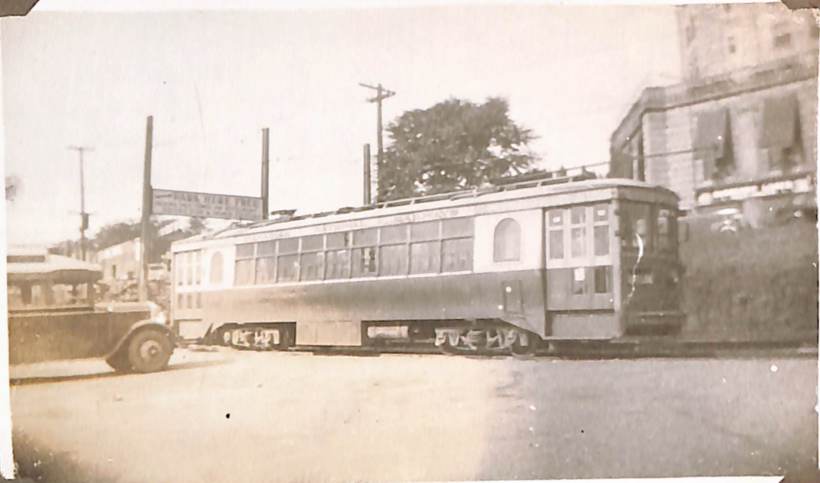
No 152, 171 LAKE SHORE ELECTRIC RAILROAD  
CHEVELAND TO DETROIT



JAMESTOWN ST. RLY. Co No 83. SNOW SWEEPER  
JAMESTOWN, N. Y. U.S.A.



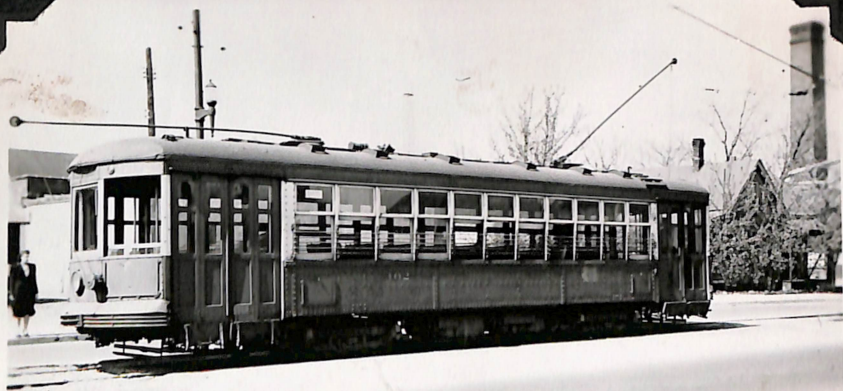
JAMESTOWN, WESTFIELD & NORTH WESTERN  
No 312 at JAMESTOWN.



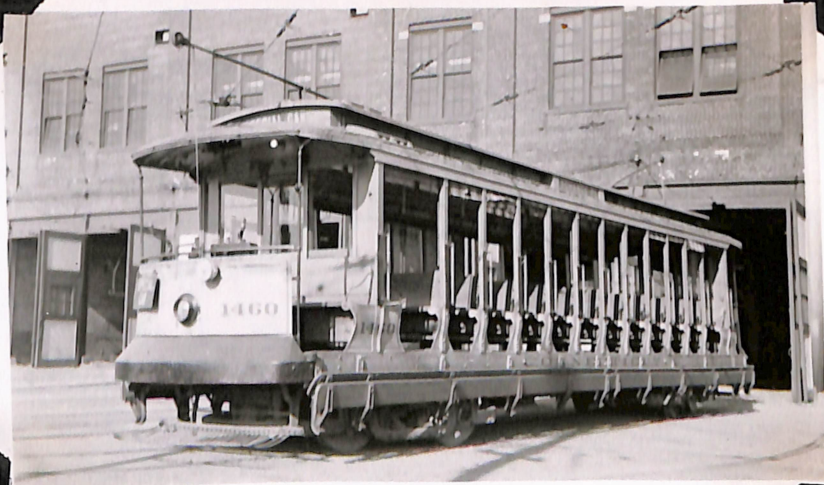
CANADIAN NATIONAL RLY. NO 302  
NIAGRA FALLS, CANADA



SNOW SWEEPER. SANDWICH, WINDSOR &  
AMHERSTBURG RLY. ONT. CANADA.

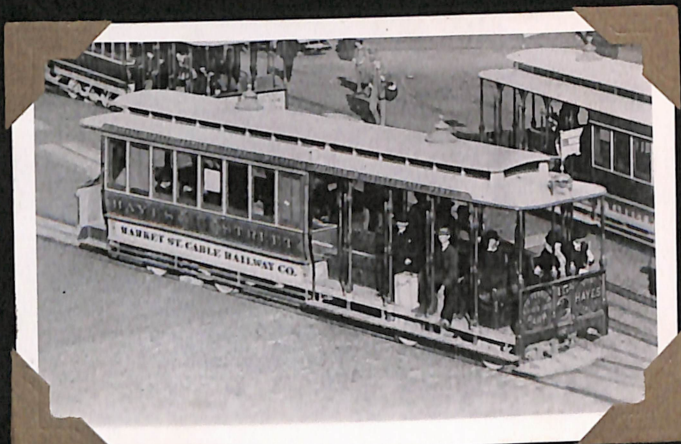


SANDWICH, WINDSOR & AMHERSTBURG RLY.  
NO 102. LAST DAY OF SERVICE 6-5-1939.



CONNECTICUT CO.  
NO 1460.





MARKET ST. CABLE RLY. CO NO 15  
"ROOT" TYPE CABLE COMBINATION  
SAN FRANCISCO. 1887



CABLE CAR  
SAN FRANCISCO 1940.



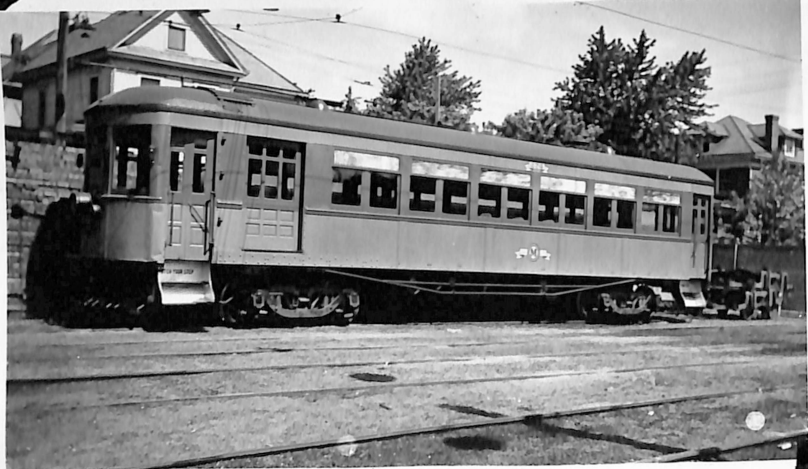
CABLE CARS NO 31 & 25 MARKET ST. CABLE RLY.  
SAN FRANCISCO 1887.



NO 276 AT FAIRMONT



NO 807 AT PARKERSBURG

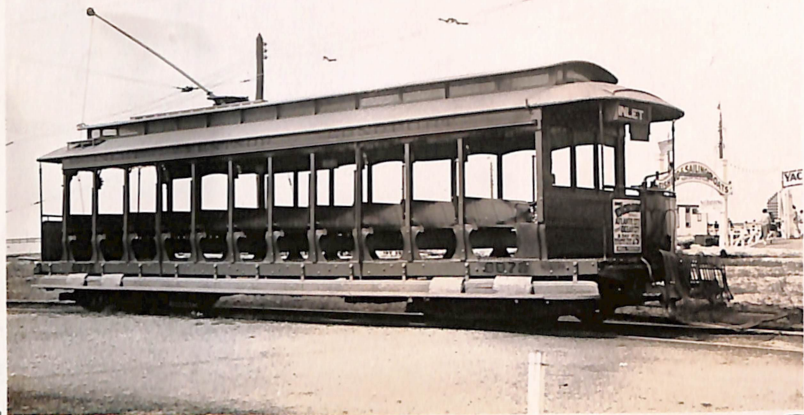


NO 274 AT PARKERSBURG

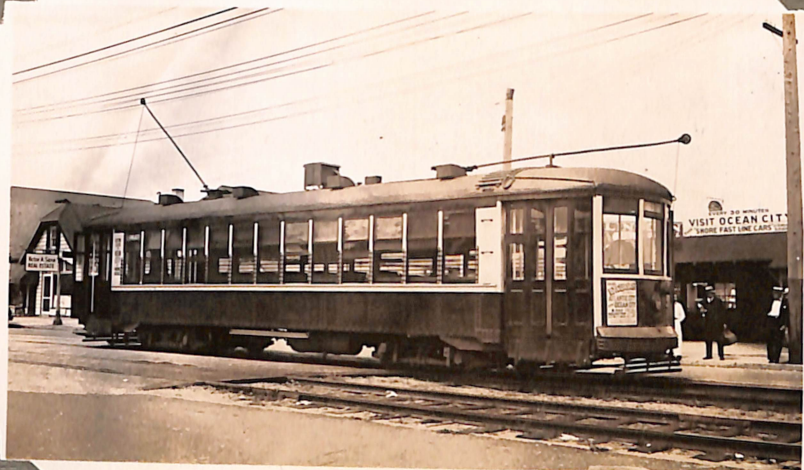


NO 250 AT CLARKSBURG

MONONGAHELA - WEST PENN PUBLIC SERVICE CO.



SUMMER CAR NO 6372 ATLANTIC CITY & SHORE R.R.  
AT INLET ATLANTIC CITY. U.S.A.



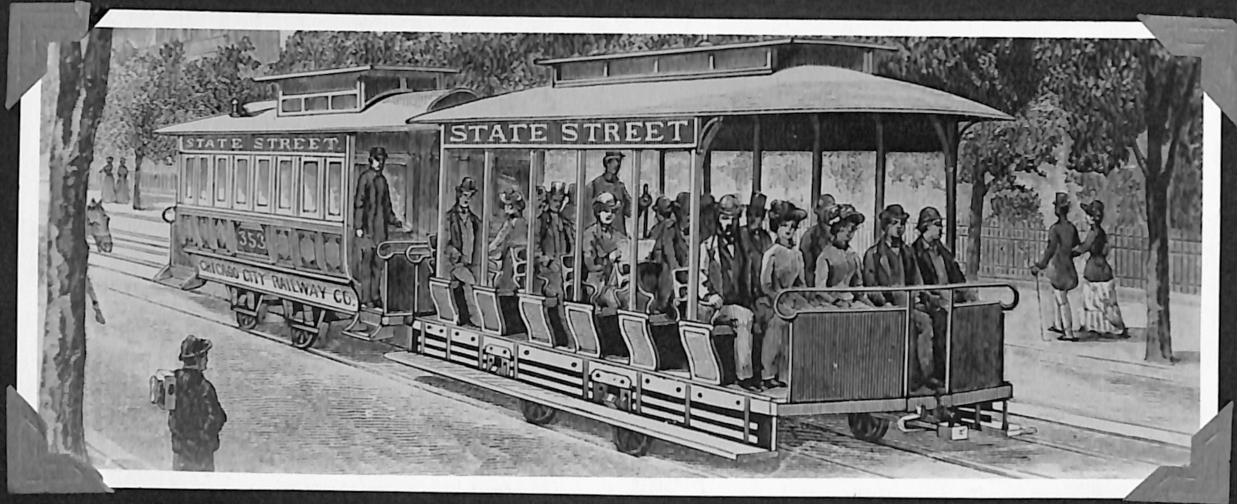
ATLANTIC CITY & SHORE R.R. EX OCEAN ELECTRIC CAR.  
ATLANTIC CITY. U.S.A.



NO 5621 BOSTON ELEVATED RLY  
FIELD'S CORNER.  
BOSTON, MASS, U.S.A.



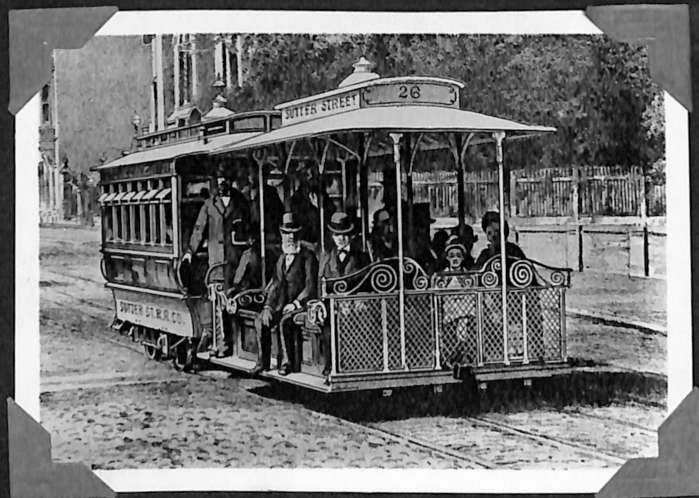
P.C.C. NO 7022 BALTIMORE TRANSIT CO.  
BALTIMORE, MARYLAND, U.S.A.



CHICAGO CITY RAILWAY CO U.S.A. CABLE TRAM NO 353 IN 1887  
GAUGE 4' 8 1/2"



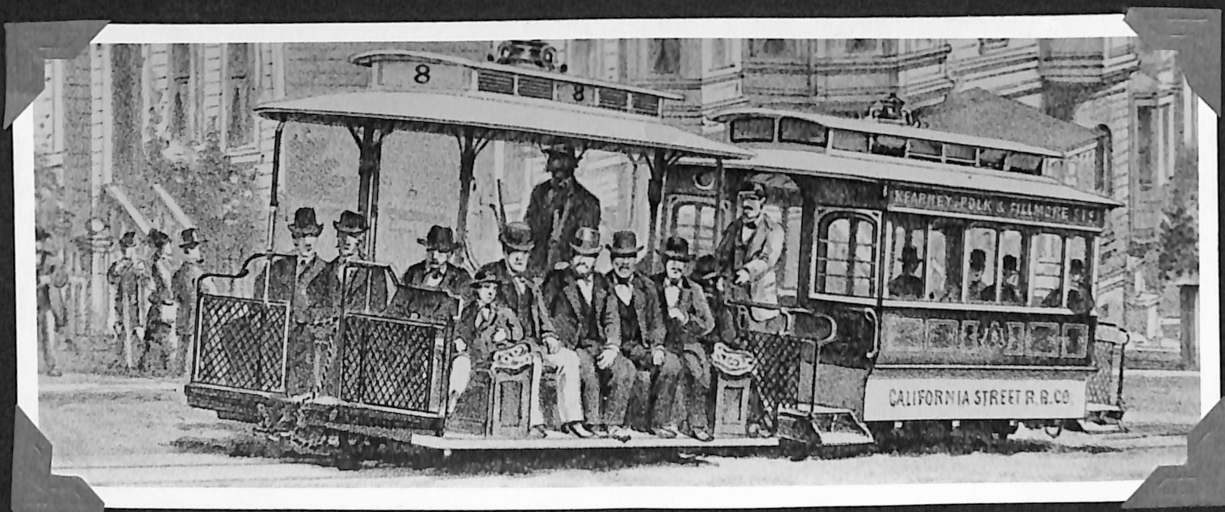
GEARY ST. R.R.CO. CABLE NO 23  
SAN FRANCISCO U.S.A.



SUTTER ST. R.R.CO. CABLE NO 26  
SAN FRANCISCO U.S.A.



CLAY ST. HILL R.R. CO. SAN FRANCISCO U.S.A. CAR NO. 5 IN 1873  
WORLD'S FIRST CABLE SYSTEM. GAUGE 3'6"



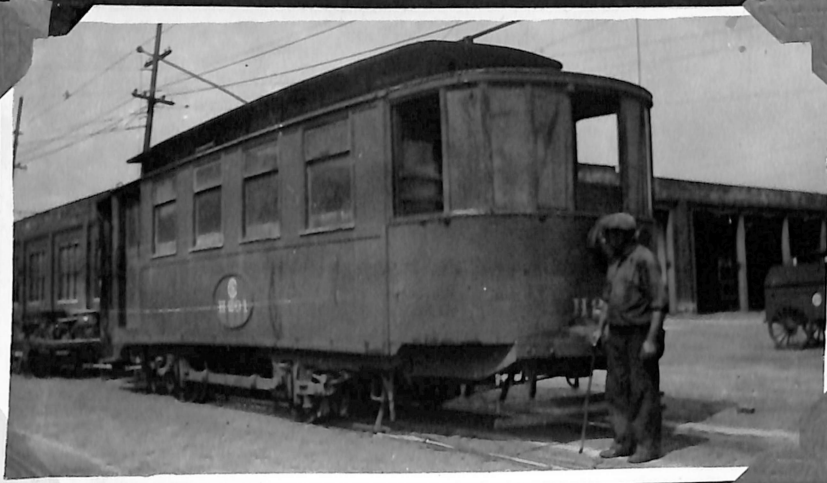
CALIFORNIA STREET R.R. CO. SAN FRANCISCO U.S.A.  
DUMMY & TRIPILER NO. 8 GAUGE - 3'6"



CHICAGO SURFACE . No. M201



CHICAGO SURFACE M202.  
WENTWORTH DEPOT.



CHICAGO SURFACE No H201  
EX MAIL CARRIER FOR CHICAGO POST OFFICES  
NOW SWITCHER WENTWORTH DEPOT.



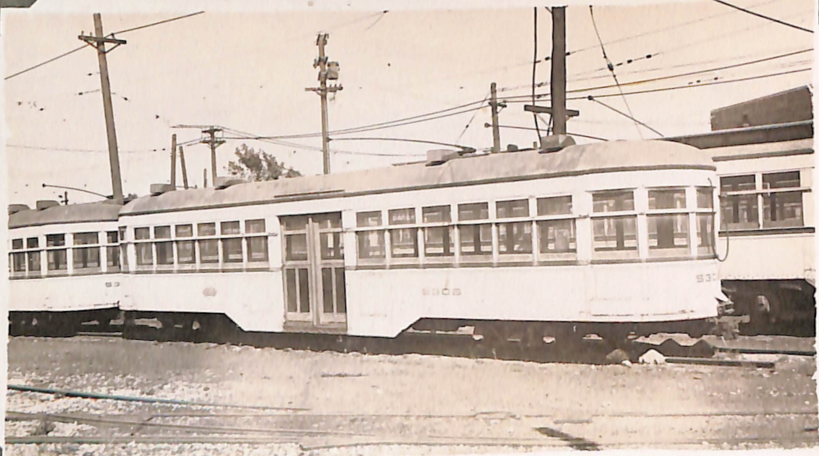
CHICAGO SURFACE. No 3908  
AT ASHLAND + PERSHING ROADS.



CLEVELAND RLY. CO. No 166



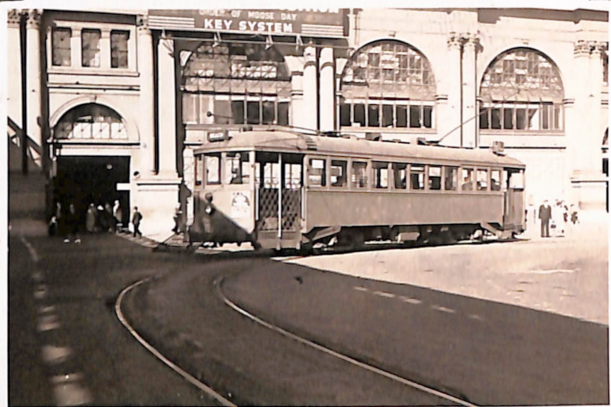
EASTERN MICH. RLY. CO. BAGGAGE CARS



TRAILERS. No 5305, 5306  
DETROIT U.S.A.



BIRNEY CAR No 150  
DETROIT. U.S.A.



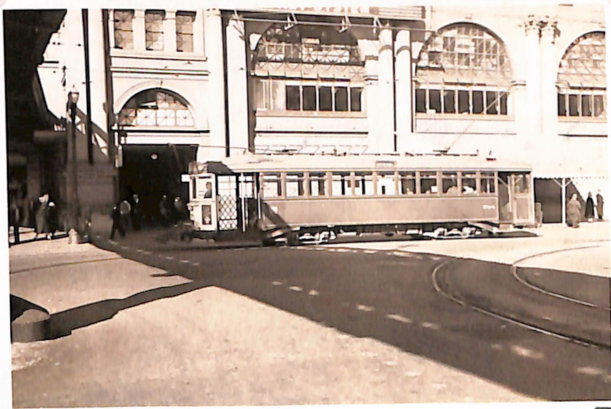
SAN FRANCISCO MUNICIPAL TRAMWAY CO.



SAN FRANCISCO MUNICIPAL TRAMWAY CO  
NO 356.



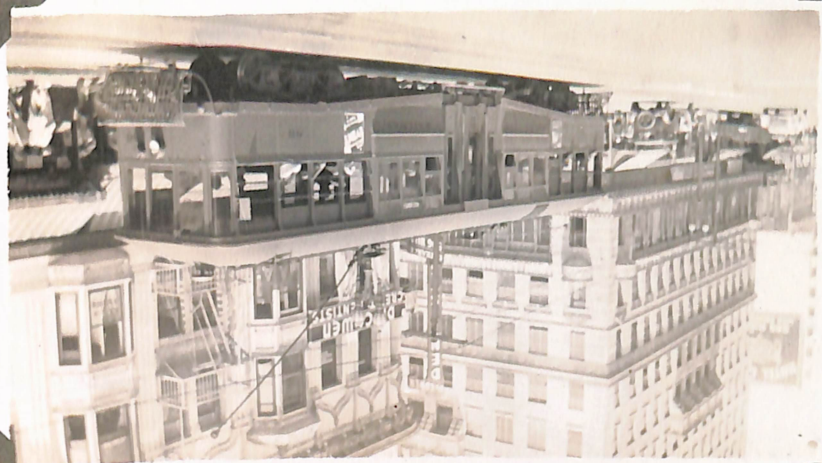
MARKET ST RLY. Co. NO 103  
SAN FRANCISCO, CALIF. U. S. A.



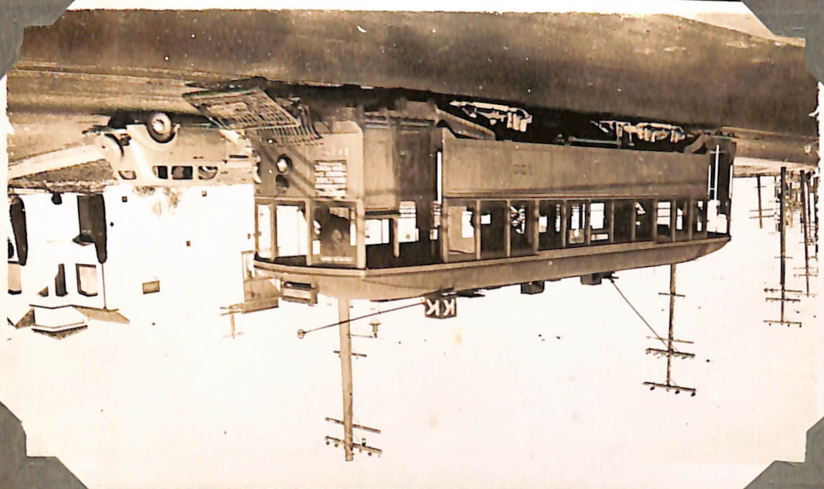
MARKET ST. RLY. Co. NO 254  
SAN FRANCISCO.



LOS ANGELES RAILROAD CO. No 86.  
U.S.A.



SAN FRANCISCO MUNICIPAL TRACTION CO.  
No 108  
U.S.A.



ILLINOIS TERMINAL RAILROAD  
No 240  
GRANITE CITY. U.S.A.



No 50-D GRAVEL CAR  
SCHENECTADY RLY.  
SCHENECTADY. NEW YORK. U.S.A.





NOS 101, 119 AT VIRGINIA AVE. ATLANTIC CITY.



NO 6301 AT LONGPORT STATION.

ATLANTIC CITY AND SHORE R. R.



NO 109 AT NORTHVILLE N.J.



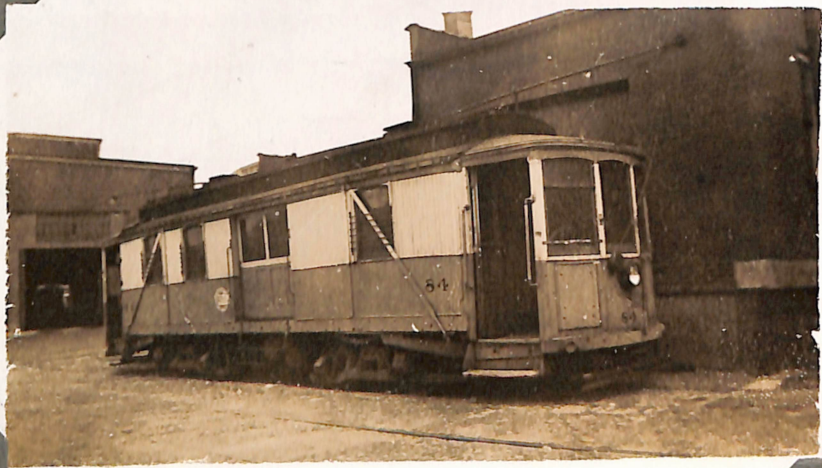
NO 100 ON GREAT EGG BAY BRIDGE  
OCEAN CITY



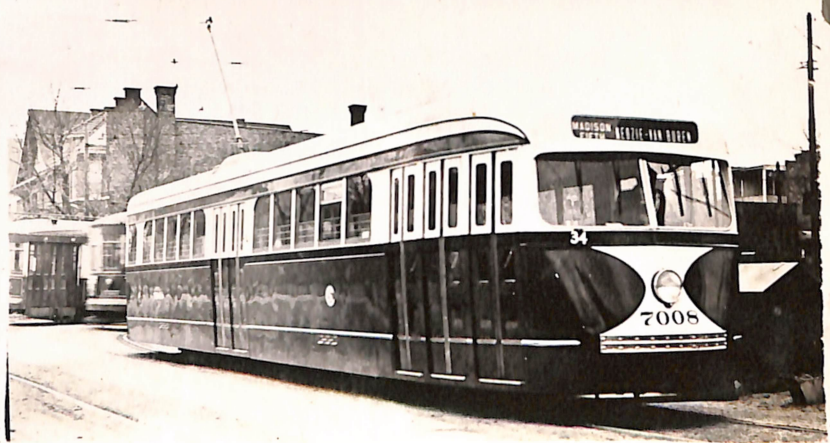
CLINTON AVE & MUSCATINE NO 31  
AT DAVENPORT, IOWA. U.S.A.



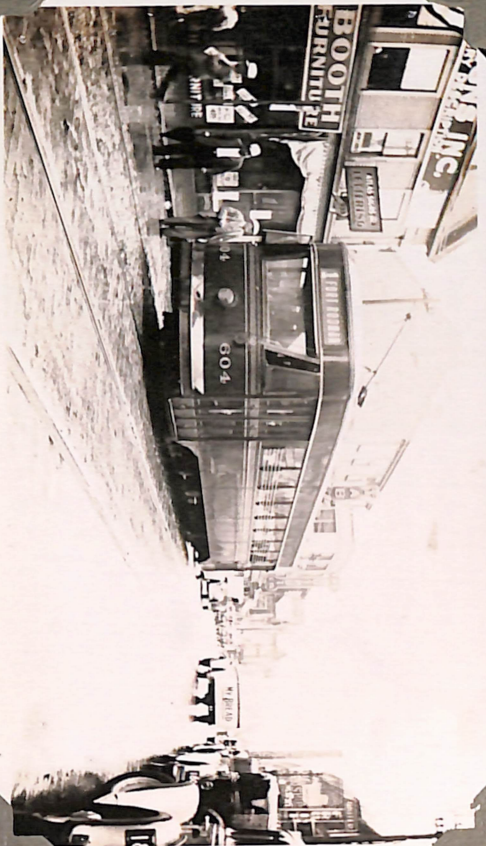
CHICAGO RAPID TRANSIT.  
INTERIOR VIEW OF NO 1765 AT WILSON AVE.



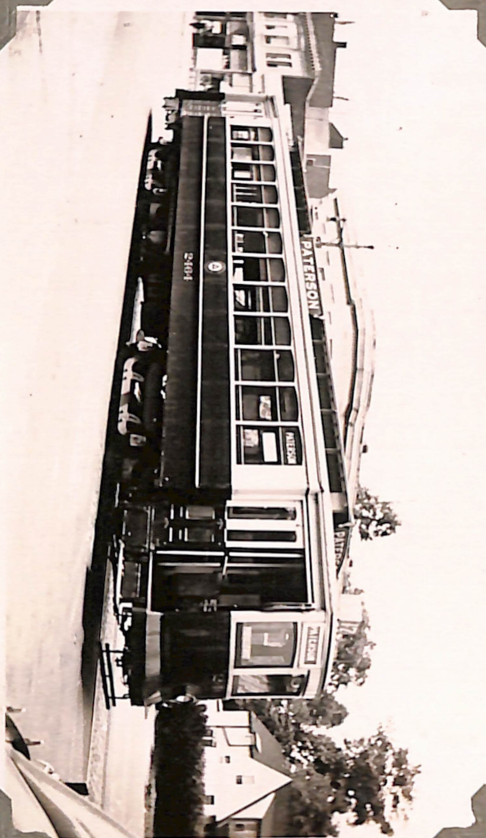
ST LOUIS PUBLIC SERVICE CORP.  
ST LOUIS U.S.A.  
EX BAGGAGE CAR.



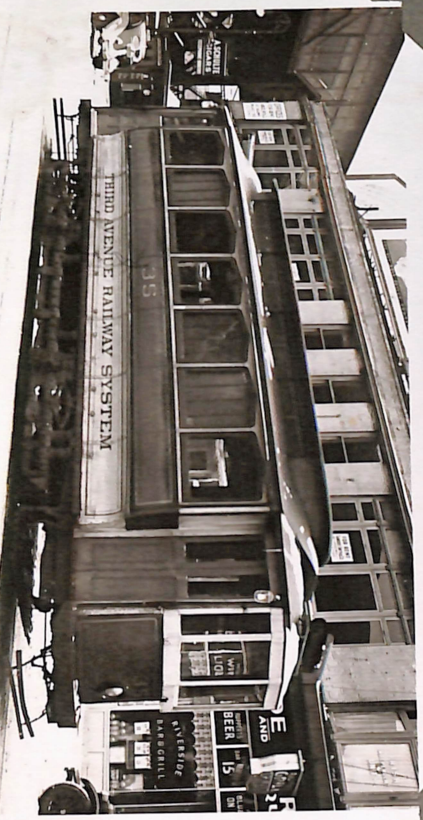
CHICAGO SURFACE LINES P.C.C. NO 7008  
AT MADISON LOOP.



NO 604 UNION ST. RAILWAY IN PURCHASE ST.  
NEW BELFORD, MASS. U.S.A.



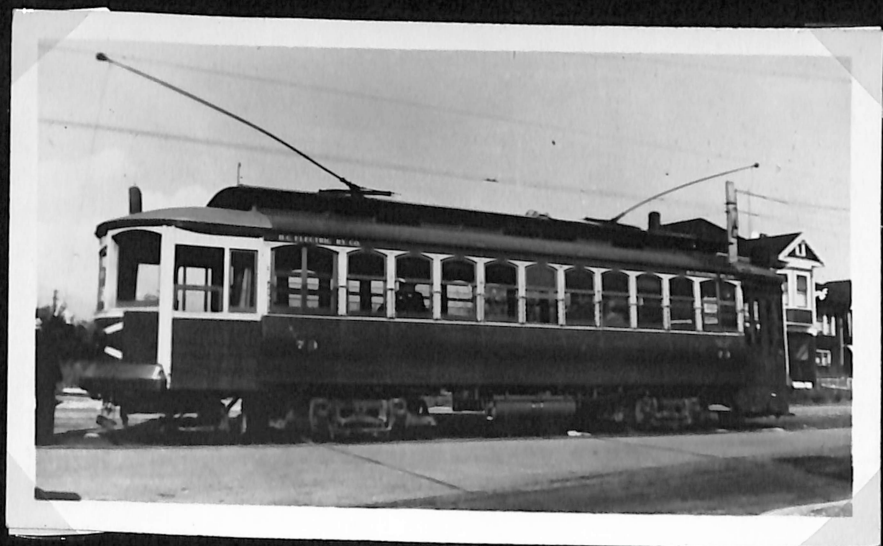
NO 2464 PUBLIC SERVICE COORDINATED TRANSPORT  
PATERSON, NEW JERSEY, U.S.A.



NO 35 SLOT SCRAPER AT BROADWAY.  
THIRD AVENUE RAILWAY SYSTEM  
NEW YORK CITY U.S.A.



DINNEY CAR NO 954  
STOCKTON ELECTRIC, CALIF. U.S.A.





U. S. A.



GARY RAILWAYS NO 204  
AT 22<sup>ND</sup> ST. GARY. U. S. A.



MILWAUKEE ELECTRIC  
NO 656. OLD PASSENGER. CAR.



NORTH SHORE & MILWAUKEE RAILROAD  
NO 250