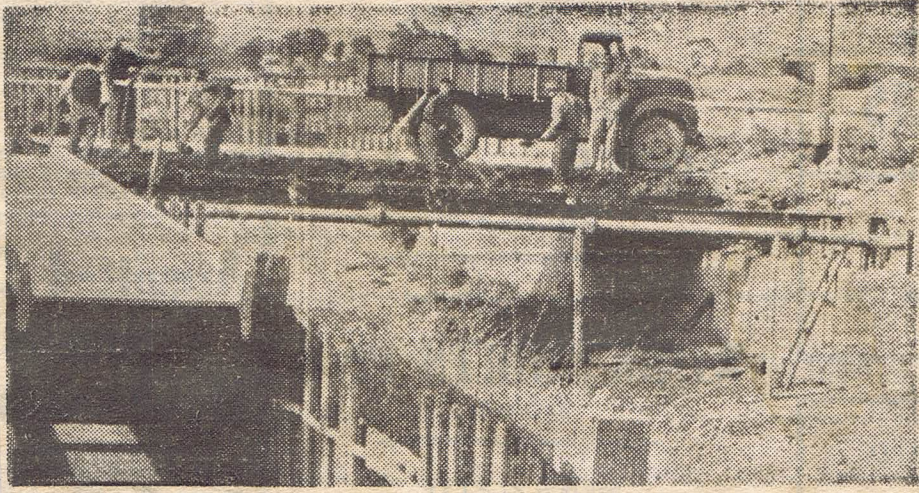
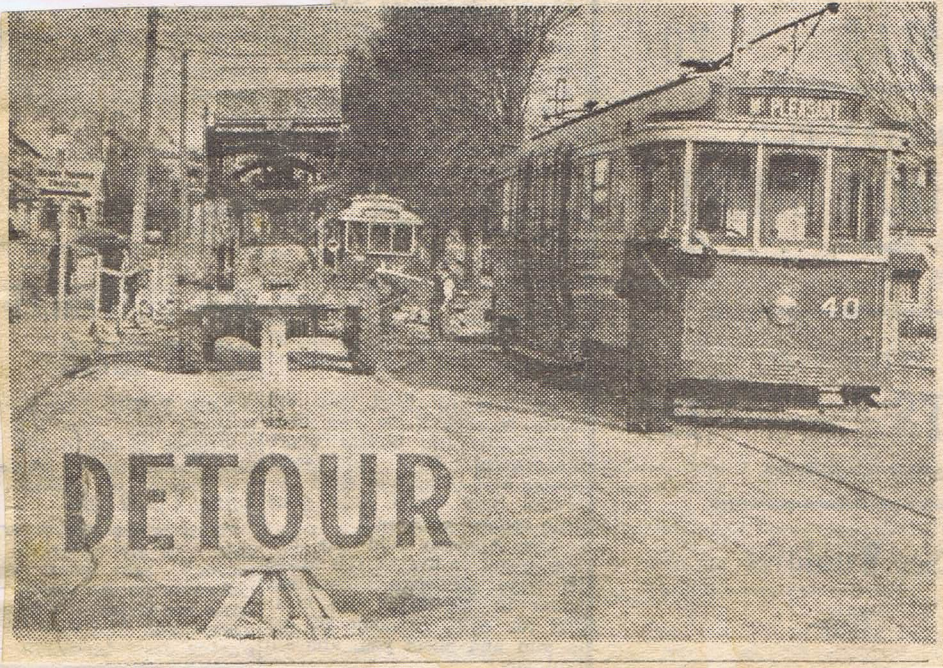


BRIDGE WORK CUTS TRAM LINE



● Top: City Council employees are pictured at work on repairs to the Barkly street bridge over Pennyweight Creek.

● Left: During the repairing of the bridge, part of the road in Barkly street has been closed, and trams are running on a shuttle service. Yesterday's picture of the out-going and city-bound trams at the site of the works.



Trams No
32

40

7th June 1955.

Tramline over Pennyweight Creek ~~crosses~~ ⁱⁿ Barkly Street was pulled up together with most of the roadway on MONDAY 6th June 55. Tram N^o 32 was left on the West side of the creek & run a shuttle service to Mount Pleasant terminus. By the 17/6/55 two new central girders were in place over the creek & flat concrete slabs placed in position. On Monday 20th, the S.E.C. commenced to relay the tram track & on Wed 22/6/55 the tram line was ballasted & fit for traffic. But during Tues night N^o 32 tram was taken to depot & replaced by N^o 33 on Wednesday morning. Through trams on Thursday 23rd June 55. Shuttle service during weekends. Last time ~~sch~~ shuttle use 7th Aug '55