

Smashes

N°37 Bogie car. On 15-4-54, at about 8 AM, N°37 Sebastopol bound, collided with a semi motor trailer at the corner of South & Drummond Sts. Tram driver David Clarence Kellett & conductor Herbert Ward. The whole of the driving cabin of N°37 was sheered off. Driver escaped with a badly fractured leg, abrasions, and shock.

front tram bogie was derailed & for two hours a shuttle service was conducted with other trams on the route. N°21 was sent to try & haul N°37 back on to the track, but was unsuccessful. A further tram was then brought to help tow but during the pull the bumper beam was torn off N°21. N°37 was shifted soon after 10 AM.

Car scrapped - 1955 Body sold - AUG '55

N°27 no details as yet.

MONDAY 15-6-53

TWO-HOUR TRAM DERAILMENT

A repair crew worked for almost two hours last night before a tram which became derailed at the intersection of Main road, Bridge and Victoria streets, could be got back on the line. The derailment is believed to have been caused by a worn inner line.

The derailment, which occurred at 6.50, was not righted until 8.40. This blockage caused the Mount Pleasant line to be out of action for the period.

The fact that the tram had just started from the Main road stop and the slow pace at which it was then travelling prevented any serious consequences.

In an effort to re-rail the tram, which had sunk into the freshly laid bitumen at the side of the line, another tram was connected to the front, but could not get sufficient traction for the job.

Eventually, with the placing of pieces of angle iron, the tram was driven under its own power, back on to the line.

Police Const. R. Harris, from

the Ballarat East Station, directed traffic around the obstruction.

TRAM MAN'S MIRACLE ESCAPE IN COLLISION

Probably the most miraculous escape from death ever recorded in Ballarat was the experience of a Ballarat tram motorman whose tram was involved in a collision with a semi-trailer on Thursday morning. The whole of the driving cabin of the tram was sheered off.

The tram driver, David Clarence Kellett, 30, of 201 Sebastopol street, Ballarat, escaped with a badly fractured leg, abrasions, and shock, and was admitted to the Base Hospital.

The conductor, Herbert Ward, 29, of 2 Sayle street, Sebastopol, received slight shock, lacerations, abrasions and an injury to the right leg.

Last night Kellett's condition was satisfactory. Ward was allowed to leave after observation.

The semi-trailer driver, Stanley Eaton, 33, of 240 Victoria street, Ballarat, also had a narrow escape from injury. The vehicle capsized on its right-hand side, but Eaton escaped with a shaking.

Eaton was assisted from the cabin through the left-hand side door.

The collision occurred at the corner of South and Drummond streets at 8 am, and Kellett was thrown out through the left-hand side of the tram.

The tram, a double-bogey type, was travelling to Sebastopol, and Eaton was going east in South street. His truck was loaded with about five tons of baled hops.

These were thrown on to the roadway when the vehicle capsized.

The tram's bodywork was sheered off to a length of four feet from the front, and, in addition to the driving compartment, a small passageway, between the driving and passenger compartments, was torn away.

Police were told that the truck was struck near the rear dual wheels of the trailer unit.

On Thursday night police were still trying to ascertain the number of passengers in the tram. It is believed that there were at least two, but they apparently escaped injury, as no one was reported to have been treated.

The front bogey of the tram was derailed, and for two hours a shuttle service was conducted with other trams on the route. Passengers transferred at the scene of the crash.

Road traffic was also diverted for more than an hour.

Another tram was called from the city, to haul the damaged tram back on to the rails. However, it was unsuccessful as the air brakes were jammed in the "on" position.

A second tram was then brought along to help in the tow, during which a heavy fender on the middle tram was pulled off.

The damaged tram was shifted shortly after 10 a.m.; being

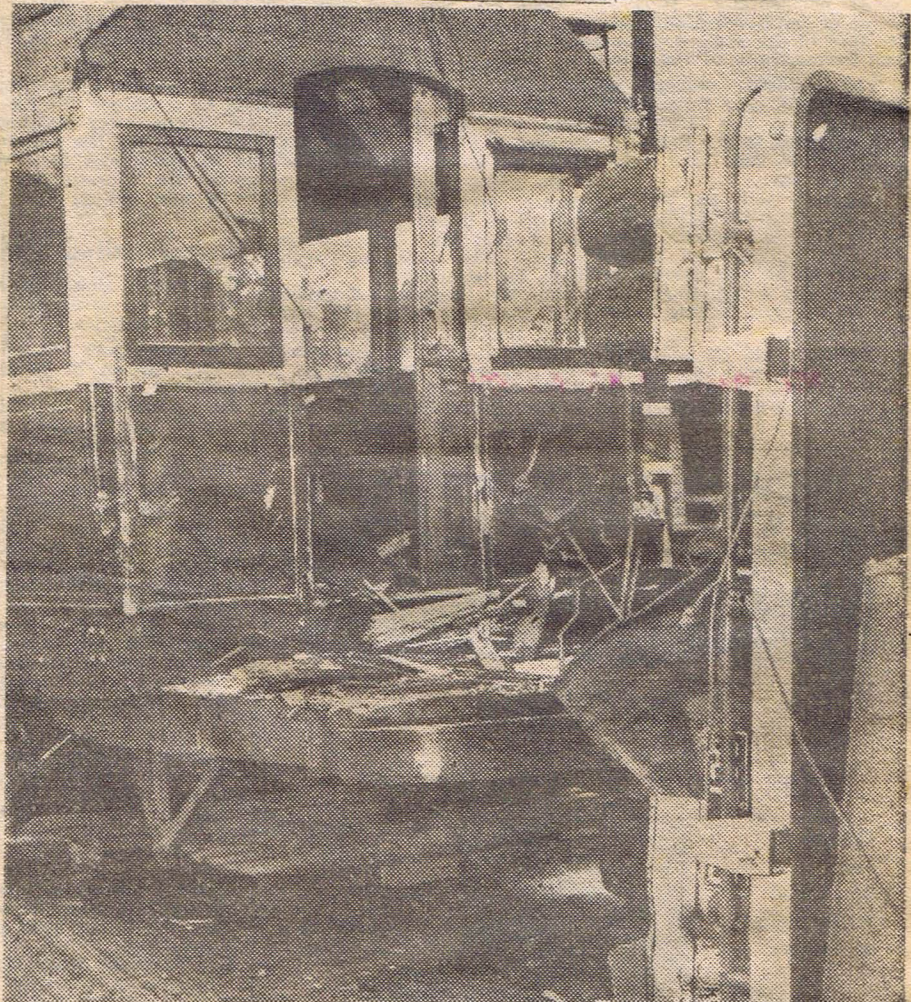
dragged about two chains before the front bogey was pulled back on to the rails.

The remainder of the bales on Eaton's truck were loaded on to another vehicle, and the semi-trailer was righted with the help of a mobile crane and tractor.

Little damage was caused to the vehicle. Senr-Const J. Barry, of Ballarat South, made inquiries.



Another view of the scene of Thursday's tram-semi-trailer crash in Ballarat. (Story this page.) The closeness of the capsized semi-trailer to the tram is again shown, as is the work of removal of bales of hops from the transport.



This graphic picture shows how the motorman's cabin and passageway behind it, was sheered off in the collision. The rear dual wheels of the capsized semi-trailer are almost in the position where the front of the driver's cabin would be.