

## Smashes + Derailments

Old type. (number unknown) While travelling to the City from Gardens, via Rifon St, one tram lost a tyre in Wendouree Parade near Victoria Ave. Date about Oct. 1918

Old type (Number unknown) In the mid 1920 a tram from Mount Pleasant jumped the curve at the intersection of Barkly & Main Sts, and came to rest in a shop front. Minor damage to tram.

N<sup>o</sup> 26 On 5<sup>th</sup> Feb. 1935, N<sup>o</sup> 26 from Gardens, city bound, ran into the scrubber tram returning to depot. Happened in Wendouree Parade, near Dowling St. (a sharp curve and branches from an overhanging tree blocked view) A lady in N<sup>o</sup> 26 had one of her legs cut off.

N<sup>o</sup> 24 1<sup>st</sup> Dec 1941. The 8am tram to Sebastopol, driven by Dr. Thomas Young, crashed into a street tree after being hit by a motor truck at the corner of Dana & Drummond Streets. Tram pulled away from tree by a road roller, and hauled back to depot by another tram. N<sup>o</sup> 24 out of service for 12 months.

N<sup>o</sup> 17 On 5<sup>th</sup> March 1943, while N<sup>o</sup> 17 in bound from Victoria St at about 7.50am, and while travelling down Victoria St hill to Bridge St, a motor truck travelling in opposite direction bashed into tram. A woman was killed and her daughter badly injured. Motorman Lionel Roy Thickland.

N<sup>o</sup> 19 At 7pm. Sunday 8<sup>th</sup> Feb 1948, N<sup>o</sup> 19 from Lydiard St North jumped track while turning into Stout St. No passengers injured.



# CROWDED TRAMCAR WRECKED AFTER COLLISION

## PASSENGERS HAVE MIRACULOUS ESCAPES

28 - July 1940

When a crowded tram travelling to Rubicon street shortly after 5 p.m. yesterday was involved in a collision with an Army car at the intersection of Drummond and Dana streets, twelve people were injured, but all miraculously escaped serious injury. *No. 22 on Adelaide A92*

## TRAM SMASHES



## RESULT OF COLLISION AT INTERSECTION

"The tram went one way and seemed to wrap itself around a tree, and the lorry crashed into a tree on the other side of the road," said an eye-witness describing a collision between a tramcar and a motor lorry at the intersection of Drummond and Dana streets yesterday. (The above picture of the tramcar taken immediately after the smash shows that the speaker was not far wrong.)

The collision occurred shortly after 8 a.m. The tram, driven by Thomas Young, was on its way to Sebastopol. It was empty at the time. The motor lorry was moving east along Dana street, and the driver, Charles Anderson Clark, wood carter, of Glenpark, later informed the police that he stopped at the intersection and proceeded on his way. The sun was glaring at the time, and when he saw the tramcar about 30 or 40 feet away he

Major Harry Pearce and Capt. James Murray, both well-known local professional men, who were passengers in the car, sustained the most severe injuries, and were admitted to Eildon House and the Base Hospital, respectively. Major Pearce's injuries were a fractured collarbone and several fractured ribs, and Capt. Murray sustained a compound fracture and dislocation of the left ankle.

Charles White, the driver of the tram, the conductress, Mrs L. Harrison, and seven passengers were among those treated at the Base Hospital for minor injuries and shock. Though White, as driver, was in a position to receive the fullest impact of the collision, he miraculously escaped with a lacerated hand. The conductress was equally fortunate, her injury being confined to a bruised bone in her right arm.

Passengers in the tram who were treated at the Base Hospital and discharged after observation were:

Mary Ann Wasley, aged 77, of Hertford street, Sebastopol, and George Wasley, 30, of same address, shock.

Elwyn Ditchfield, 610 Drummond st., head injuries.

Lorna Phillips, Alfred street, leg injury.

Albert Millman, Kent street, injured hip.

Mary Brown, 107 Campbell's Crescent, shock.

Olive Foote, 511 Asocet street, lacerated eyebrow.

**CRASHED AGAINST TREE.**

It is believed that other occupants of the motor car were treated at 107 Convalescent depot. The driver, Lesley Butts, sustained a lacerated knee, and after treatment at the Base Hospital was removed to the Convalescent depot.

The tram was travelling in a southerly direction, and the car was headed west, up Dana street, when the col-

lision occurred, the car apparently striking the left front of the tram with great force. The tram left the rails and crashed against a tree on the southwest corner. After the collision the car came to rest against a tree.

The tram, an open type, was reduced to a wreck of twisted iron, broken glass and splintered woodwork. The driver's cabin was completely shattered, and its framework forced back into the front platform, the seats and flooring of which were buckled and torn from their supports. The whole of the glass in the windows on the right of the saloon fell to the roadway, and the roof was extensively damaged.

The front of the motor car was forced inwards, but apart from that it was not extensively damaged.

Shortly after the accident hundreds of people and cars assembled to view the damaged tram, and until at late hour last night groups of interested spectators continued to gather at the scenes of the collision.

**DAMAGE TO TRAM SERIOUS.**

Referring to the collision last night, Mr T. A. Farr, manager of the Ballarat branch of the State Electricity Commission, said that while regretting the accident and deeply sympathising with the injured, he derived some little consolation from the knowledge that it was not attended by fatal consequences. The damage to the tram was a serious loss he added, as rolling stock was now unprocurable. It was not possible, however, to assess the extent of the damage yet, but he thought that the tram would probably have to be entirely rebuilt.

**SECOND ACCIDENT OF KIND.**

Exactly two years ago a similar accident occurred at the same spot, when a tram came to a halt on the eastern side of the rails. No one was injured.

was a motor carrier, and driven by Eric George Leggett.

**HOW IT OCCURRED.**

When passing the tramcar in Victoria street, between Humfray and Peel streets, the tray of the truck swung suddenly and collided with the tramcar with considerable force, crashing through portion of the framework and striking Mrs

general confusion, some of whom fell from their seats to the ground. The driver, Roy Strickland, was fortunately not injured. He had been checked, and was receiving attention to move down

the tram. Mr William's employee sprang from the tram as the brake had been applied, and was unable to stop the

tram, and the tram continued on its way. It was brought to a standstill in Bridge street, some distance from the junction.

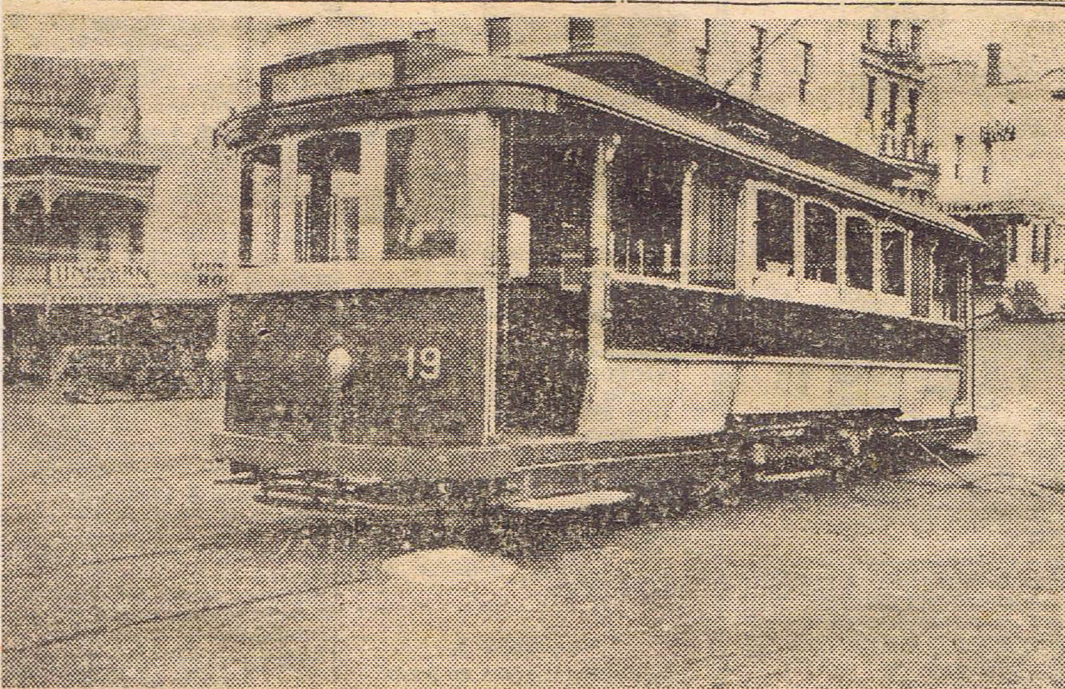
**TO HOSPITAL.**

It is reported that Mrs Ellis, who was seriously injured, was summoned to the hospital and admitted. Her injuries were more serious, consisting of fractured ribs, fractured lungs, and she died at the hospital.

She died on the danger of the tram, which consisted of fractured

tram passengers was

badly damaged, but not seriously injured, and its driver



The derailed tram showing tracks made in the bitumen leading to the "silent cop," over which the wheels passed. The front end of the tram (right) is shown resting on the ground. The tram, bound for Sebastopol, jumped the points while turning from Lydiard street north into Sturt street shortly after 7 p.m. yesterday.



# TRAM SMASHES INTO TREE



## RESULT OF COLLISION WITH MOTOR LORRY AT INTERSECTION No. 24

"The tram went one way and seemed to wrap itself around a tree, and the lorry crashed into a tree on the other side of the road," said an eye-witness describing a collision between a tramcar and a motor lorry at the intersection of Drummond and Dana streets yesterday. (The above picture of the tramcar taken immediately after the smash shows that the speaker was not far wrong.)

The collision occurred shortly after 8 a.m. The tram, driven by Thomas Young, was on its way to Sebastopol. It was empty at the time. The motor lorry was moving east along Dana street, and the driver, Charles Anderson Clark, wood carter, of Glenpark, later informed the police that he stopped at the intersection and proceeded on his way. The sun was glaring at the time, and when he saw the tramcar about 30 or 40 feet away he

swerved to the right to miss it, but the tram hit his left front wheel.

The tram left the rails after the impact and travelled from 50 to 60 feet to the left, leaving well-defined wheel marks in the bitumen surface of the road. The cabin and forward smokers' compartment were smashed as the tree became embedded in the tram.

The driver, seeing the tree ahead and unable to control his course, escaped to the back of the vehicle, and received only abrasions and a slight shaking. The front portion of the lorry was extensively damaged, but Clark escaped injury.

The noise of the smash startled nearby residents, and both trees bear extensive scars. The tramcar remained for some time until it was removed with the combined use of another tramcar and a steam roller.

No 17 5th March 1943

# TRAM AND TRUCK IN COLLISION

## WOMAN KILLED: DAUGHTER SERIOUSLY INJURED

When a collision occurred between a tramcar and a motor truck on Victoria street hill, Ballarat East, at 7.50 a.m. yesterday a woman was fatally injured and her 16-year-old daughter seriously injured.

### DEAD.

Mrs Mary Susan Ellis, aged 51 years, widow, residing at Mannibadar.

### SERIOUSLY INJURED.

Joyce Ellis, aged 16 years, daughter of deceased.

Mrs and Miss Ellis, who were staying with Mrs Ellis' mother in Glazebrook street, were travelling on a City-bound tramcar which was conveying several other passengers to the city. They were seated in the saloon of the tram. Approaching from the opposite direction was a motor truck belonging to R. Blakey and Co., carriers, and driven by Eric George Leggett.

### HOW IT OCCURRED.

When passing the tramcar in Victoria street, between Humffray and Peel streets, the tray of the truck swung suddenly and collided with the tramcar with considerable force, crashing through portion of the framework and striking Mrs Ellis and her daughter.

The impact caused general confusion amongst the passengers, some of whom were forcibly thrown from their seats to the opposite side of the car. The driver of the tram, Lionel Roy Strickland, was temporarily stunned. Fortunately the speed of the tram had been checked.

While the injured were receiving attention the tram started to move down the hill.

An ambulance officer, Mr William Plater, and a tramways employee sprang aboard, but as the air brake had been damaged they were unable to stop the tram.

The men jumped off, and the tram, gathering momentum, continued on its way and came to a standstill in Bridge street, about 100 yards from the junction of the Mt. Pleasant route.

### INJURED TAKEN TO HOSPITAL.

It was at once apparent that Mrs Ellis and her daughter had been seriously injured. The ambulance was summoned, and as speedily as possible they were taken to the Base Hospital and admitted. Mrs Ellis was in the more serious condition. She was suffering from concussion, shock, lacerations, fractured ribs and hemorrhage of the lungs. She lingered for about two hours and died at 10.25 a.m.

Miss Ellis was placed on the danger list. Her injuries consisted of fractured ribs and severe shock.

None of the other car passengers was injured.

The tramcar was badly damaged, but the motor truck escaped, and its driver was unhurt.

**Wear**

Terry JUMPERS 6/11

SCAMP BATHERS 10/

SHORTS 10/

PLAY SUITS 15/

Linen SLACKS 25/

Pretty Floral FROCKS Special 15/6

Lds. "Super Kool" Jersey FROCKS, No. cps. 49/6

Ladies' "Model" SILK FROCKS. S.W.-O.S. 8 cps. 59/6

Ladies' White SPORTS FELTS. 19/6

Jessica Model Frocks and SUITS. 8 cps. 79/6

**STONE'S**

AT THE JUNCTION OF BRIDGE, MAIN AND VICTORIA STS., BALLARAT.

innings, three for 71. Golden Point won on first innings.

**RSCC D. CENTRAL.**  
RSCC, first innings, 256 (E. Stephens 120, E. Hicks 43; A. Levison 4/37 B. Leask 4/47).  
Central, first innings, 136 (Levison 75; K. Edwards 4/45, inc. hat trick).

RSCC won on first innings.

**WENDOUREE D. BALLARAT.**  
Wendouree, first innings, 74. Second innings, three for 162 (J. Calnin 42, K. Sutherland 42, Bates 38, Wray 36 not out; Carey 1/15).  
Ballarat, first innings, 110. Second innings, 88 (Best 36, Cousens 4/22).  
Wendouree won outright.

**VICTORIA D. RAILWAYS.**  
Victoria, first innings, 207 (Bill Westrup 89, Brennan 41, Beaumont 29; J. Ryan, 6/44).  
Railways, first innings, 190.  
Victoria won on first innings.

**MT. CLEAR V. N. BALLARAT.**  
Mt. Clear, first innings, 286.  
North Ballarat, first innings, eight for 166 (Ron Clack 58, Roy Clack 33, G. Drough 23; Hollicake, 3/39).  
Drawn game.

**SECTION 2.**

**E. FOOTBALLERS D. RAAF.**  
East Footballers, first innings, 194 (Wells 55, Duncan 48). Second innings 195 (Klemm 81 not out; Morton 5/22).  
RAAF, first innings, 186 (Campbell 50; Klemm 4/19).  
East Footballers won on the first

377, declared.  
Congoes, first shire 63, Neth 4/52). Second 6/19, Manning Brown Hill w

**EAST I**  
East End, fr Willison 78 not Second innings 2/1).  
VRI, first inn not out; A. H trick; S. Willi nings, 141 (39).

East End wo

**NEIL ST**  
Neil Street f YCW, first 32; Scott 3/8) 4 for 152 (M. Neil Street w

**SSCC d**  
SSCC, first i go 70, Cross 41 32; G. Pyke Thomas 1/17).  
Skipton Stre Second innin SSCC won on

**NORTH CITY**  
**EAST**  
North Foot 187 (W. Walk Hardwick 3/28) East Baptist, Walker 3/6). (Berry 4/2, N



## Smashes and Derailments

N<sup>o</sup> 22 (3<sup>rd</sup> N<sup>o</sup> 22, ex Adelaide 92) 28<sup>th</sup> July 1944,  
Tram bound for Rubicon Street and travelling  
along Drummond Street South when an Army  
car crashed into it at Dana St intersection  
at 5pm. The tram was almost cut in two.

12 passengers were injured. Motorman Charles White  
Mrs L. Harrison conductress.

Car never rebuilt & finally scrapped in 1945.

Adelaide mileage: 574,234 Ballarat mileage 97,620

Total of 671,854 miles.

N<sup>o</sup> 13 & 30. On 9/2/45, ~~N<sup>o</sup> 13 Lydiard St Nth,~~ <sup>crashed</sup> ~~was into~~  
~~stationary at the tram centre in Sturt St,~~ when N<sup>o</sup> 30  
~~Mt Pleasant bound~~ N<sup>o</sup> 13 Lydiard St. Nth bound,  
crashed into N<sup>o</sup> 30 (Mt Pleasant) which was  
stationary at the tram centre in Sturt St  
at 10.40am. Brakes on N<sup>o</sup> 13 failed. Driver J. Tonkin  
on N<sup>o</sup> 13. and 3 passengers were treated for shock.

N<sup>o</sup> 32, On 9<sup>th</sup> March 1945. N<sup>o</sup> 32 Mt Pleasant Bound  
in Main Street, opposite Ballarat East P.O. at about  
8am, when Stan J. Hopkins of Geelong, driving a truck  
of 5 tons of blue stone screenings hit the tram at 12 m.p.h.  
Truck overhung tram line by 18". No passengers hurt,  
but Dr. Herbert Smerdon received minor facial injuries.  
Right hand side of cabin & smoking saloon wrecked. Tram off line.

N<sup>o</sup> 17 On the 1<sup>st</sup> Oct. 1949, N<sup>o</sup> 17 to Gardens (ex Vic. St) while  
standing unattended at the tram centre - Sturt St at  
about 9am, suddenly rolled backwards & jumped the  
track at the bottom points at Grenville St. It shot  
diagonally across to S. E. Dickens (Grocers) and crashed  
into rear of Mobile doughnut kitchen, then  
uprooted a heavy iron verandah post and  
flung the post through the plate glass window.

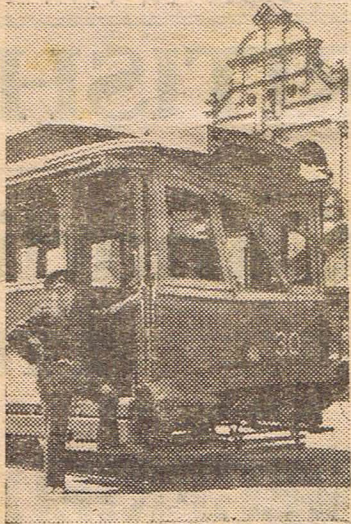






### TRAMS CRASH WHEN BRAKES FAIL

When a tram, the brakes of which failed to operate, struck another tram between Armstrong and Lydiard streets, at 10.40 yesterday morning, the passengers of both cars experienced a narrow escape from serious injury. Portions of both trams were badly damaged, and the driver of one of them and three passengers were treated at the Base Hospital for shock.



The tram on which the brakes failed was bound for Lydiard street north, and the other car was stationary at the Lydiard street stop.

So heavy was the crash that people hurried from nearby business places, fearing that a major accident had occurred.

The rear cabin of the stationary tram and the front cabin of the other car were extensively damaged, and the driver of the moving tram had a remarkably narrow call. He was Mr Joseph Tonkin, of Cardigan and Haddon streets, who was treated at the Base Hospital for shock, and was permitted to return to his home.

The passengers who received shock were Mrs Rose Miller, of 414 Ripon street, who was admitted to the hospital; Mrs Elizabeth Collard, of 208 Wendouree parade, who was treated and allowed to go home; and Mrs Amelia Robinson, of 245 Albert street, Sebastopol, who was admitted later in the day.

The trams were taken away under their own power.

*No of tram unknown happened 2-4-1948*

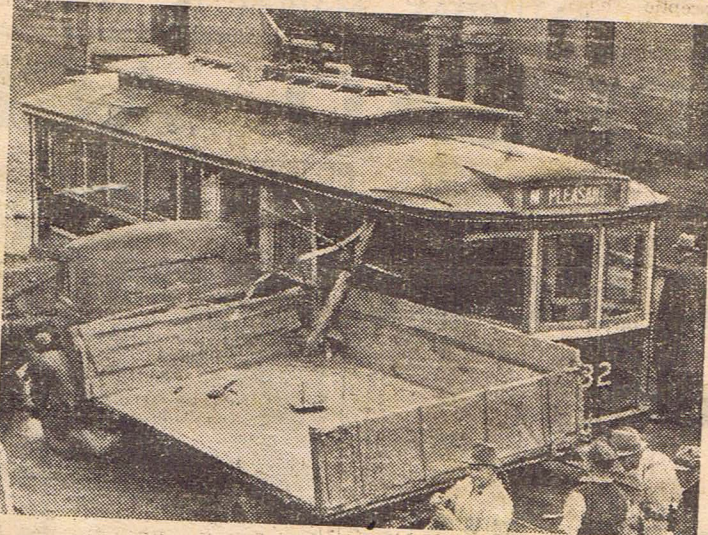
of systems of rearing and management are more dependent on poultry under commercial

Conducted by W. R. REID

### TRAM AND TRUCK COLLIDE IN MAIN ROAD

#### NARROW ESCAPES FROM SERIOUS INJURY

In a collision between a tram car and a truck which occurred at the intersection of Main road and Mumfray street shortly before 8 o'clock yesterday morning, the driver of the tram, Herbert Emerdon, aged 38 years, of 223 Errard street south, received minor facial injuries which necessitated treatment at the Base Hospital. The driver of the truck escaped injury.



The tram car with its shattered glass windscreen fared the worse in the collision with the heavy truck. The front wheels were thrown off the line.

The tram and truck, which were proceeding in opposite directions, collided near the Ballarat East post office corner, the truck crashing into the cabin of the tram car. There were no passengers on the front portion of the tram, the only previous occupant of which alighted at the previous stopping place.

The front of the tram was badly damaged, a portion being completely wrecked.

The driver of the truck, Stanley James Hopkins, contractor, of Carrington street, Geelong, escaped

with a shaking, but the vehicle he was driving was slightly damaged. The impact forced the front wheels of the tram off the line, but they were speedily righted, although for a time the Mount Pleasant timetable was disorganised.

At the Hospital the driver of the tram received treatment for a nasty cut on the face, caused by a fragment of glass from the broken windscreen.

The tram car was proceeding to Mount Pleasant, and the truck was travelling towards the city.

### TRAM, MOTOR CYCLE CRASH HEAD-ON

#### —TWO INJURED

A motor cyclist, Walter J. Kerr, 23, of Linton, was critically injured, and a girl, Miss Beverley Wade, 17, of 5 Hotham street, Ballarat, received severe injuries when a motor cycle they were riding was involved in an almost head-on collision with a tram in Bridge street, at about 11 o'clock last night.

Kerr suffered a possible fracture of the skull, compound fracture of the left leg, extensive lacerations, and shock. His condition early this morning was very grave.

Miss Wade sustained a fractured left leg, multiple abrasions, extensive lacerations and shock. Condition serious. Placed on danger list.

The tram struck the motor cycle with terrific force, and the machine was wedged under the front of the tram. One of Kerr's shoes was found on the roadway.

The noise of the impact and screams from a young woman soon attracted a large crowd, and traffic was held up.

Police and ambulance officers were quickly on the scene, and the injured man and young woman were removed to the Base Hospital, and admitted.

Police were told that Kerr and Miss Wade, accompanied by another motor cyclist and a girl, had supper together at a Bridge street cafe.

The other couple left a few minutes before Kerr and Miss Wade, and mounted their machine which, with Kerr's, was parked behind a stationary motor car.

The second couple drove to the intersection of Grenville street, and then noticed that Kerr and Miss Wade were not following.

As they waited, it is understood, they saw Kerr's motor cycle emerge from the kerb behind the car, and then collide heavily with the tram, which was on its way to Victoria street.

The driver of the tram was so distressed by the collision that he was relieved of his duties.

Tramway officials instituted a shuttle service of trams until the wrecked motor cycle was dragged free of the tram.

On his admission to hospital in an unconscious condition, Kerr was immediately given blood transfusions. Kerr is understood to be boarding in Ballarat.

*No 32*