

Ballarat Tramways  
Undertaking.

Pictorial Record  
of the Fleet.



OLD CAR 2

Purchased from	Sydney (Randwick)
Truck Type	Single
Body Builder	Duncan & Fraser
Truck Builder & Type	Brill
Seating Capacity	40
H.P. & Type	2-30 WH.
Weight Tons (Gross)	12
Miles Service (In Ballarat)	No record

Power Station at rear.

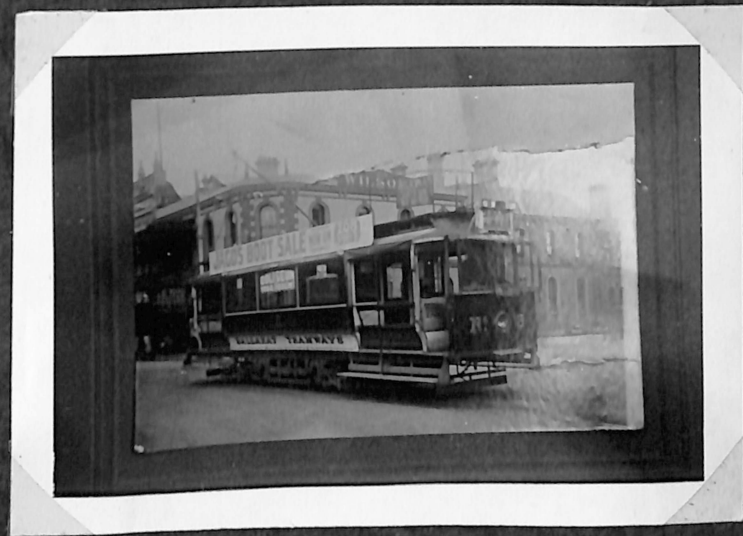
Re Built in Ballarat by  
Duncan & Fraser



OLD CAR 2

Purchased from	Sydney (Randwick)
Truck Type	Single
Body Builder	Duncan & Fraser
Truck Builder & Type	Brill
Seating Capacity	40
H.P. & Type	2-30 WH.
Weight Tons (Gross)	12
Miles Service (In Ballarat)	No record

Re built in Ballarat by  
Duncan & Fraser





OLD CAR 18

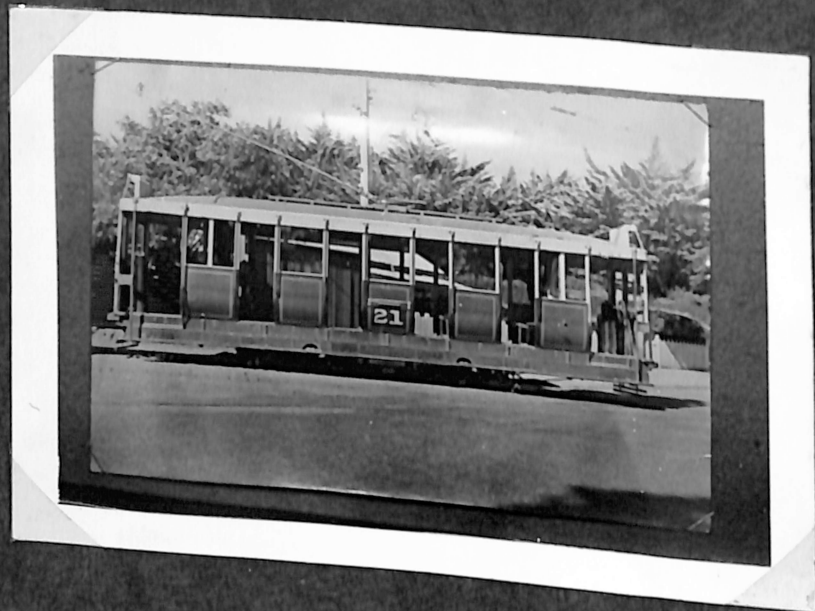
Purchased from	FAB. from horse drawn tram
Truck Type	Single
Body Builder	Duncan & Fraser
Truck Builder & Type	Brill
Seating Capacity	36
H.P. & Type	2-30 WH.
Weight Tons (Gross)	10
Miles Service (IN BALLARAT)	No record

Trailer converted to Elec. Car.



OLD CAR 21

Purchased from	New Elec. Supply Co. of Vict.
Truck Type	Single
Body Builder	Duncan & Fraser
Truck Builder & Type	Brush
Seating Capacity	40
H.P. & Type	2-38 GE.67
Weight Tons (Gross)	11
Miles Service (In Ballarat)	No record
No. 23 still in service	





OLD CAR 23

Purchased from	New Elect. Supply Co.
Truck Type	Single
Body Builder	Duncan & Fraser
Truck Builder & Type	Brush
Seating Capacity	40
H.P. & Type	2-38 GE.67
Weight Tons (Gross)	11
Miles Service (In Ballarat)	No record

Scrubber car approx. 1910-12  
(In service at 31 March 1958.)



CAR 17

Purchased from	M.T.B.1931
Truck Type	Single Truck
Body Builder	Meadow Banks
Truck Builder & Type	Brill 21E.
Seating Capacity	28
H.P. & Type	2-45 WH.225
Weight Tons (Gross)	11
Miles Service (In Ballarat) 31-3-58	535172





CAR 19

Purchased from	M.T.B.1931
Truck Type	Single Truck
Body Builder	Meadow Banks
Truck Builder & Type	Brill 21E
Seating Capacity	28
H.P. & Type	2-45 WH.225
Weight Tons (Gross)	11
Miles Service (In Ballarat) 31-3-58	694967

M.T.B. No. 76



CAR 21

Purchased from	Adelaide 1937
Truck Type	Single Truck
Body Builder	Duncan & Fraser
Truck Builder & Type	Brill 21E
Seating Capacity	32
H.P. & Type	2-65 GE.201
Weight Tons (Gross)	12 $\frac{1}{2}$
Miles Service (In Ballarat) 3-3-58	436549

Body only Adelaide

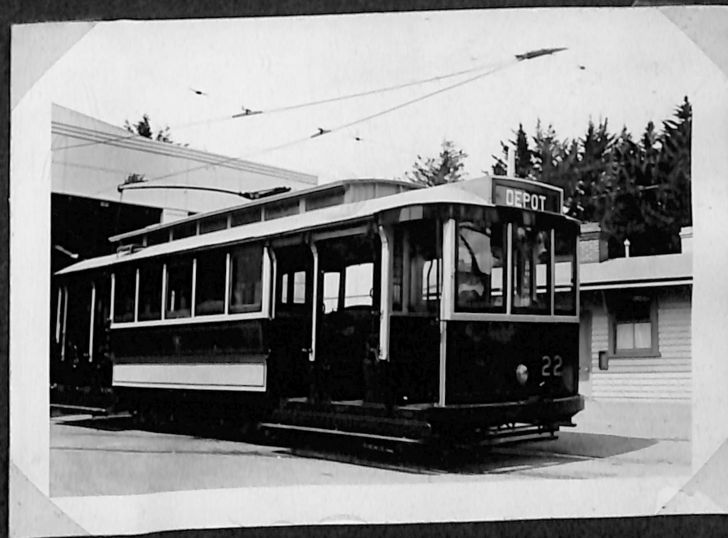




CAR 22.

Purchased from	Adelaide
Truck Type	Single
Body Builder	Duncan & Fraser
Truck Builder & Type	Brill 21E
Seating Capacity	32
H. P. & Type	2-33 WH.204
Weight Tons (Gross)	12
Miles Service (In Ballarat)	No Record

Retired 1945



CAR 23

Purchased from	Adelaide 1937
Truck Type	Single
Body Builder	Duncan & Fraser
Truck Builder & Type	Brill 21E
Seating Capacity	32
H.P. & Type	2-33 WH.204
Weight Tons (Gross)	12 $\frac{1}{2}$
Miles Service (In Ballarat)	240000 15/2/52 out of service

Gold Centenary (was 69 Adelaide)





CAR 26

Purchased from	M.T.B.1930
Truck Type	Single truck
Body Builder	Duncan & Fraser
Truck Builder & Type	Brill 21E
Seating Capacity	30
H.P. & Type	2-45 WH.225
Weight Tons (Gross)	12
Miles Service (In Ballarat) 31-3-58	725673

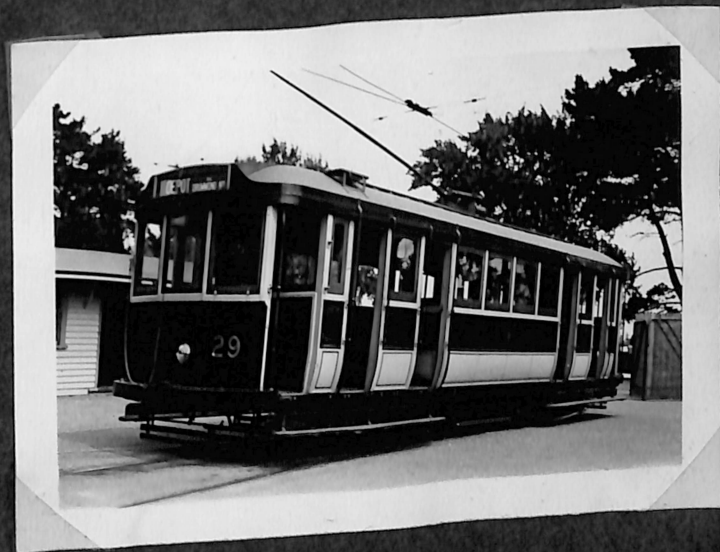
M.T.B. No. 111



CAR 29

Purchased from	M.T.B.1935
Truck Type	Single
Body Builder	Duncan & Fraser
Truck Builder & Type	Brill 21E
Seating Capacity	32
H.P. & Type	2-65 GE.201
Weight Tons (Gross)	12
Miles Service (In Ballarat)	No record

Out of service



CAR 30

Purchased from	M.T.B.1935
Truck Type	Single truck
Body Builder	Duncan & Fraser
Truck Builder & Type	Brill 21E
Seating Capacity	30
H.P. & Type	2-50 GE.202
Weight Tons (Gross)	12
Miles Service (In Ballarat) 31-3-58	629030

M.T.B. No. 183





CAR 36

Purchased from	M.T.B.1945
Truck Type	Bogie
Body Builder	Duncan & Fraser,
Truck Builder & Type	Brill 22E
Seating Capacity	44
H.P. & Type	2-65 GE.201
Weight Tons (Gross)	16
Miles Service (In Ballarat) 31.3.58	352989

M.T.B. 132  
In service until 1953 as No. 15  
then 36.



CAR 40

Purchased from	M.T.B. 1951
Truck Type	Bogie
Body Builder	Duncan & Fraser
Truck Builder & Type	Brush
Seating Capacity	32
H.P. & Type	2-65 GE.201
Weight Tons (Gross)	16
Miles Service (In Ballarat) 31-3-58	135177

M.T.B. No. 35



BENDIGO CAR

NO RECORD THIS BRANCH

Trailer converted to Electric  
Car.

