

170
P.L. Butte
.inc.

44 West Park Avenue • Long Beach, New York 11561
516-889-1190 • 1 800-289-1049 • Fax 516-889-1297

Tuesday, August 22, 2006

Warrington Cameron
Cameron Associates
45 Tasmania Circle
Forrest, ACT 2603
Australia

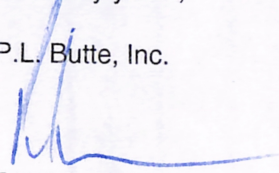
Dear Warrington:

Here is the sample of the Twill weave as they now make it. Not exactly the same as Seashore - woven a bit looser but this is the best that the factory can do with their machines.

I look forward to hearing from you.

Sincerely yours,

P.L. Butte, Inc.



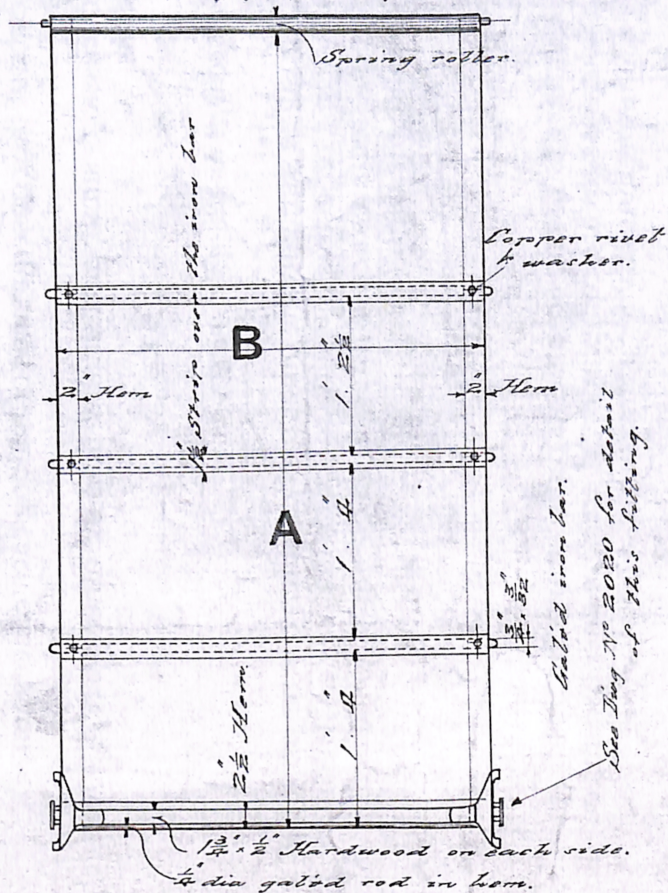
Peter L. Butte
PLB/p

Rattan and Reed; Materials and Products

THE MUNICIPAL TRAMWAYS TRUST.

This drawing was the property of the
Municipal Tramways Trust.

ADELAIDE. S. A.



45 x 13

Schedule of dimensions for Car Blinds.

Type of Car.	No per Car.	Dimension.		Code No for reference.
		A.	B.	
Combination Nos 1 to 20	4	6.0	39 1/2	100 cm 1
" " " "	4	6.0	27	68.5 2
" " 21-30	4	6.0	4 1/2	3
" " " "	4	6.0	26	4
Open " 31-50	2	5.8	38	5
" " " "	14	5.8	28	6
" " " "	14	5.8	4 1/2	7
" " " "	14	5.8	28	6
Combination " 61-100	4	6.0	4 1/2	3
" " " "	4	6.0	27	2
Bogie " " 101-120	2	6.9	25	8
" " " "	2	6.9	33	9
" " " "	6	6.9	29	10
" " " "	2	6.9	43	11

Blinds to be of Dark brown canvas to approved sample.
All new blinds, and repaired blinds to be strictly in accordance with these dimensions.

CAR BLINDS.

No. 2005.
SECTION. H.
DRAWER No. 7.

H. G. T. Goodman.
1-10-10.
Chief Engineer
& General Manager.

2800
x2
40" 102 cm
27" 69 cm
x4
2800

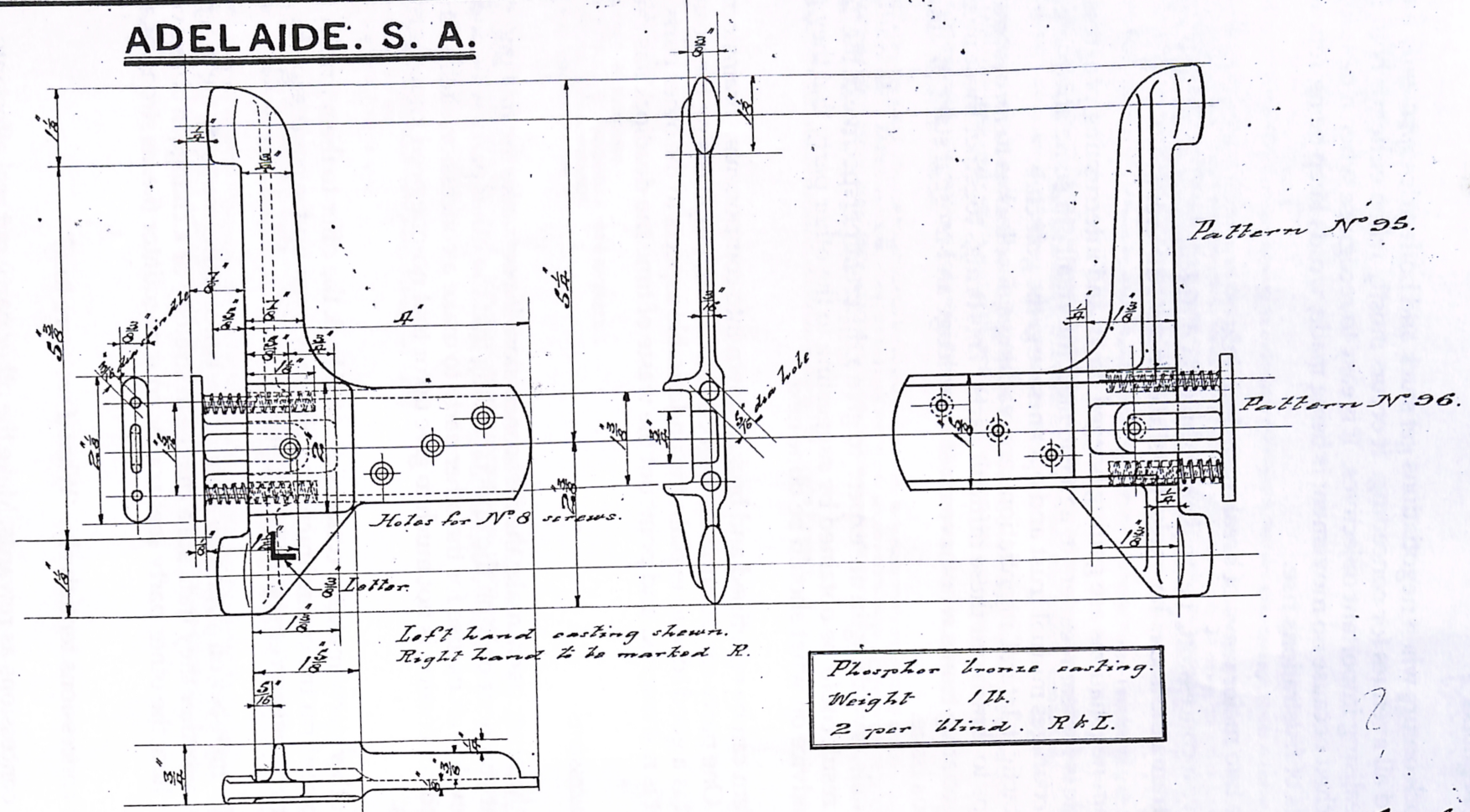
102
140
242

CANCELLED
ST. DWG No. 7095

This drawing is the property of the Municipal Tramways Trust

THE MUNICIPAL TRAMWAYS TRUST.

ADELAIDE. S. A.



Left hand casting shown.
Right hand to be marked R.

Phosphor bronze casting.
Weight 1 lb.
2 per blind. R & L.

No. 2020.
SECTION. H.
DRAWER No. 7.

SLIPPER FOR CANVAS BLINDS. HALF SIZE.

H. C. Woodman.
Chief Engineer 9-11-10.
& General Manager.

Blinds

From: <John.Radcliffe@csiro.au>
Subject: RE: Adelaide visit
Date: August 16, 2013 11:41:18 AM GMT+10:00
To: <office@cameronandassociates.com.au>
Cc: <kymsmith@vtown.com.au>
3 Attachments, 3.2 MB

Warrington

With regard to roller blinds for your Geelong Butterbox, following our conversation when I was in Canberra a few days ago, I make the following comments:-

Spring rollers:- Any spring rollers we have off A type cars are likely to be too rusted to be any use. If you go to any good blind shop, you will find they have blind rollers in two or three sizes - a small size for window blinds and a larger size for heavier blinds (but not an extra large size for use on very big outside weather blinds on houses). They come in various lengths and you buy one over length and just cut the length to suit. Be careful not to make them too short as they may fall out. We have lost one off 186, though I have no idea what happened to the roller, though the blind is still there. They also have a ratchet fitting that you have to remove so that the blind is always under tension. You should have the blind maker sew about 12-18 inches of desuti cloth or similar to the top end of the blind as this is used to glue to blind onto the roller.

You also need to make a thin slotted tool to hold the spring in tension when you are fitting it into the blind holder fittings - I assume these are still on the car. I can show you a tool I made.

The metal strips you can make yourself and drill holes in them so the blind-maker can rivet the canvas. It is essential that the blind slides up and down the posts are absolutely parallel, and preferably the gaps between the posts are identical or you will have to prepare the metal strips in sets to match each opening. The metal strips should be heavy enough that they do not bow out and come out of the slides. (I made the ones for 186 too lightly.)

With regards to the spring loaded fittings (see attached drawing 2005 of general dimensions and drawing 2020), I do not know to what extent we have any spares of these. We will presumably need to reserve two sets for cars 14 and 15 ("Bib and Bub") though they may well not be installed immediately.

I suspect we may not have any spares. We should have a set from car 89 scrapped by the Museum in 1960. I doubt that there were many on 14 and 15 when we got them. There may be some spare ones from E-1 type cars.

Your alternative is to use the wire system. The pipe has an internal thread and could be made fairly easily from a commercially available galvanised pipe. The brass slipper fittings that screw on the end may be available as spares - some cars also used them in their saloon window blinds (See drawing 2155 attached). I suppose you could get them cast but it would involve a lot of finishing afterwards including threading. You can look at cars 186, 264 and 282 when you visit. A fine stranded wire is used - I can give you a sample if necessary from a bit I have left over from cars 186 and 264.

I'll c.c. this e-mail to Kym Smith and I suggest you consult with him as to what may be available, if anything.

Regards

John Radcliffe

Dr John Radcliffe AM FTSE
Honorary Research Fellow
Group Executive, Waite Campus
CSIRO
E john.radcliffe@csiro.au T +61 8 83038580
(After hours T +61 8 82724215; +61 8 82724003; F +61 8 82724273)
Private Bag 2, Glen Osmond, South Australia 5064
<http://www.csiro.au/people/John.Radcliffe.html>

PLEASE NOTE

The information contained in this email may be confidential or privileged. Any unauthorised use or disclosure is prohibited. If you have received this email in error, please delete it immediately and notify the sender by return email. Thank you. To the extent permitted by law, CSIRO does not represent, warrant and/or guarantee that the integrity of this communication has been maintained or that the communication is free of errors, virus, interception or interference. Please consider the environment before printing this email.

-----Original Message-----

From: Cameron & Associates [mailto:office@cameronandassociates.com.au]
Sent: Friday, 16 August 2013 9:47 AM
To: Radcliffe, John (Group Exec, Waite Campus)
Subject: Adelaide visit

John

We are planning to be in Adelaide for a wedding on the last weekend in October. I look forward to visiting St Kilda on Sunday 27th and hope you are rostered on then. In our car will be the two route number boxes (with brackets) that I salvaged from the Tradesmen's Club long ago. They didn't ever use them on 156.

I've talked to the people who made up Tony Smith's weather blinds for his Melbourne cars at Haddon and am confident they can do the job at a reasonable price. If there were four top rollers (116 cm between holding brackets) and lower spring-loaded "fixers" spare and purchasable, I'd be very keen to have them. Alternatively, the wire system on your No 1 is another solution if you have spare lower bars for that but I can't remember how it works. The Geelong car will look fine without blinds in the 4 narrower entrances.

Should I talk to Kym about this?

Kind regards
Warrington

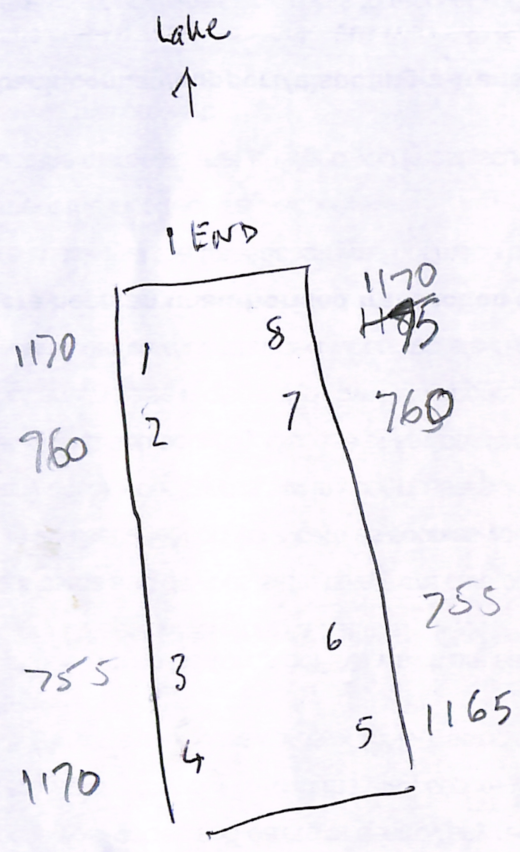
Special Instructions:
 Owner has Canvas Fabric to bring in and get cut and sewn to size.

Quote subject to checking in office. Valid for 30 days.
 Terms: Minimum 50% deposit on acceptance of quote.
 Balance required prior to installation.
 Payment: Cash, Cheque, Credit Card, EFTPOS OR Direct Deposit:
 C. E. Bartlett
 858, 083-532 Account: 92-426-3441

Total (Ex GST)	\$392.00
GST AMT	\$39.20
Total (incl)	\$431.20
Deposit Amt	
Balance	\$431.20

Receipt No []

083-532 92426 3441 431.20

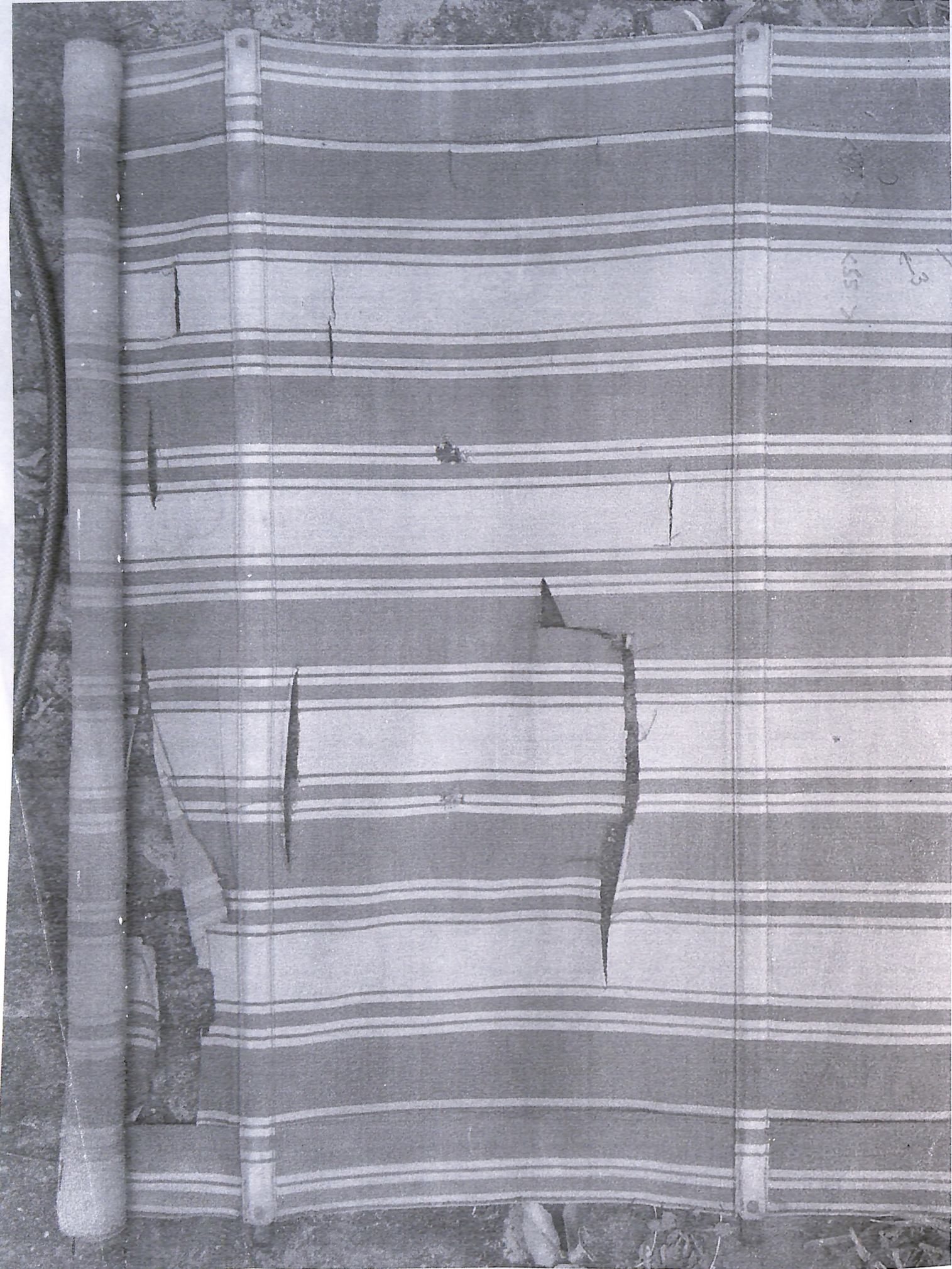


50% \$220
 pd 10/7
 N 2710 5896 5746.

431-20
 220

 211-20 pd 17/8
 N 2817 5763 5356

15 mm



but succeeded.

6/94

C.B.I. BLINDS



Brella Pattern No. PB21



Brella Pattern No. P244



Brella Pattern No. P241



Brella Pattern No. P245



Brella Pattern No. P242



Brella Pattern No. PB18



Brella Pattern No. PB27



Brella Pattern No. PB6



Brella Pattern No. PB25



Brella Pattern No. PB23



Brella Pattern No. P239



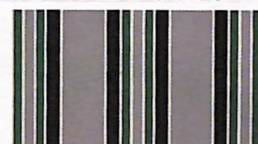
Brella Pattern No. P206



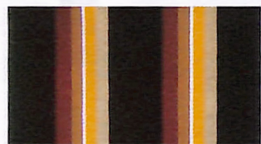
Brella Pattern No. P95



Brella Pattern No. P234



Brella Pattern No. P231



Brella Pattern No. P224



Brella Pattern No. P226



Brella Pattern No. P216



Brella Pattern No. P221



Brella Pattern No. P229



Brella Pattern No. P228



Brella Pattern No. P194



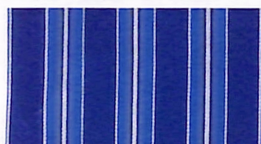
Brella Pattern No. P235



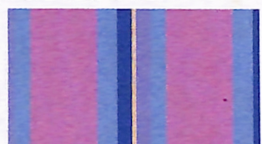
Brella Pattern No. P236



Brella Pattern No. P232



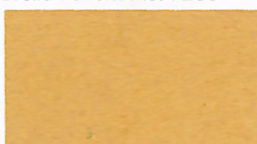
Brella Pattern No. P94



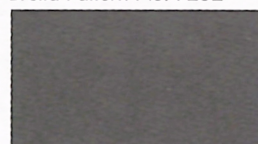
Brella Pattern No. P246



Brella Pattern No. PM5



Brella Pattern No. PM21



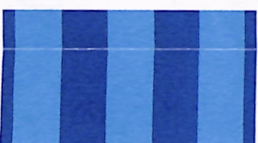
Brella Pattern No. PM19



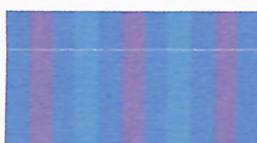
Brella Pattern No. PM18



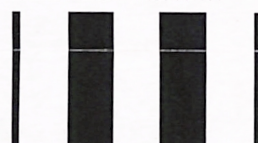
Brella Pattern No. PM17



Brella Pattern No. PB15



Brella Pattern No. P247



Brella Pattern No. PB9

We also make 'Controlux' Venetians and Slimlines Vertical Drapes, Holland Blinds. YOU SAVE by dealing direct from our factory for quality and value plus!

Colour printing cannot accurately match the depth of Brella canvas colours. See our representative for actual samples and to discuss awning designs & finishes.

WE MATCH ANY DISCOUNTS ADVERTISED



Consolidated Blind Industries Pty. Ltd.

up to 6 months INTEREST FREE terms

FREE NO OBLIGATION QUOTE ALL HOURS

Ph: 280 7588