



PATONS  
AND  
BALDWIN'S



7



No. 49

SPECIALTY  
Knitting Book

"P&B"  
BRAND

"P&B"  
BRAND

TEN ULTRA-SMART MODELS . . . SIXPENCE



¶ When purchasing Wool for any garment, it is most important to procure sufficient of one blend to complete the article, as no guarantee can be given that exactly the same shade can be supplied afterwards, slight variations between different blends being unavoidable.

ABBREVIATIONS:—K. = Knit plain; P. = Purl; tog. = together; wl. fwd. = wool forward; p.s.s.o. = pass slip stitch over; w.o.n. = wool over needle; w.r.n. = wool round needle.

TENSION.—IT IS MOST IMPORTANT TO GET THE CORRECT TENSION.

## IMPORTANT!

The correct size of any of the Garments illustrated in this Book will only be obtained by using the Wool recommended in the Recipe.

¶ When the instructions read, "Cast off 2 stitches, K.2" (or similar stitches), the stitch on the right-hand needle, after casting off, is counted as one stitch.

### LADY'S JUMPER—"Annette" Design *(Illustrated on Front Cover).*

● The illustration of this Jumper is from a direct natural colour photograph.

**MATERIALS:**—9 ozs. PATON'S SUPER SCOTCH Fingering Wool, 4-ply, and 9 Skeins "WHITE HEATHER" Embroidery Wool—the original was worked with Super Fingering, Maize (shade 2042), and Embroidery Wool, 1 Skein each Crimson (shade 5776), Light Green (shade 5908), Purple (shade 604), Dark Brown (shade 519), Deep Blue (shade 5409), Yellow (shade 5377), Deep Green (shade 5410), Orange (shade 5380), Light Blue (shade 5407). Two No. 9 and two No. 12 "BEEHIVE" Knitting Needles, measured by the Beehive Gauge. Thirteen Buttons.

**MEASUREMENTS:**—Length from top of shoulder, 18 ins. Width all round at under-arm, 35 ins. Length of sleeve from under-arm, 17 ins.

¶ Work at a tension to produce 7 stitches to the inch.

**THE RIGHT FRONT.**—Using the No. 12 Needles, cast on 62 stitches.

**1st row.**—K.2, \* P.1, K.1, repeat from \* to the end of the row.

Repeat this row once.

**\*\* 3rd row.**—K.2, P.1, K.1, (wl. fwd.) twice, K.2 tog., \* P.1, K.1, repeat from \* to the end of the row.

Repeat the 1st row nine times.\*\*

Repeat from \*\* to \*\* twice, the 3rd row once, then the 1st row once.

Using the No. 9 Needles, proceed as follows:—

**1st row.**—K.2, (P.1, K.1) three times, P.1, knit plain to the end of the row.

**2nd row.**—K.1, purl to the last 9 stitches, (K.1, P.1) four times, K.1.

Repeat these 2 rows four times.

**11th row.**—K.2, P.1, K.1, wl. fwd., K.2 tog., P.1, K.1, P.1, knit plain to the end of the row.

Continue in plain, smooth fabric (keeping a border of 9 stitches in rib at the front edge), making a button-hole in every following 12th row, until ten button-holes have been worked from the commencement.

Work 2 rows without shaping.

In the next row, cast off 8 stitches, K.1, purl to the last 9 stitches, (K.1, P.1) four times, K.1.

Still keeping a border of 9 stitches in rib at the front edge, and making a button-hole in the 9th row, decrease once

at the end of the needle in the next and every alternate row, until 46 stitches remain.

Continue without shaping, making a button-hole in the 6th and the following 12th row, ending with a purl row.

Proceed as follows:—

**1st row.**—Cast off 13 stitches, knit plain to the end of the row.

**2nd row.**—K.1, purl to the last stitch, K.1.

**3rd row.**—K.1, K.2 tog., knit plain to the end of the row.

Repeat the 2nd and 3rd rows until 27 stitches remain.

Work 3 rows without shaping.

Shape for the shoulder as follows:—

**1st row.**—Knit plain to the last 9 stitches, turn.

**2nd and 4th rows.**—Purl to the last stitch, K.1.

**3rd row.**—Knit plain to the last 18 stitches, turn.

**5th row.**—Knit plain to the end of the row. Cast off.

**THE LEFT FRONT.**—Work exactly as given for the Right Front, omitting the button-holes, and working the border and the shapings at the opposite end of the needle.

**THE BACK.**—Using the No. 12 Needles, cast on 116 stitches.

**1st row.**—K.2, \* P.1, K.1, repeat from \* to the end of the row. Repeat this row thirty-three times.

Using the No. 9 Needles, proceed as follows:—

**1st row.**—Knit plain.

**2nd row.**—K.1, purl to the last stitch, K.1.

Repeat the 1st and 2nd rows, until the work measures the same as the Front to the under-arm, ending with the 2nd row.

Cast off 8 stitches at the beginning of each of the next 2 rows.

Decrease once at each end of the needle in the next and every alternate row until 84 stitches remain.

Continue without shaping, until the arm-hole measures the same as the Front arm-hole, ending with a purl row.

Shape for the shoulders as follows:—

**1st row.**—Knit plain to the last 9 stitches, turn.

**2nd row.**—Purl to the last 9 stitches, turn.

**3rd row.**—Knit plain to the last 18 stitches, turn.

**4th row.**—Purl to the last 18 stitches, turn.

**5th row.**—Knit plain to the last 27 stitches, turn.

**6th row.**—Purl to the last 27 stitches, turn.

**7th row.**—Knit plain to the end of the row. Cast off.





**THE SLEEVES.**— Using the No. 9 Needles, cast on 28 stitches.

**1st row.**—Knit plain to the end of the row, cast on 2 stitches.

**2nd row.**—K.1, purl to end of the row, cast on 2 stitches.

**3rd row.**—Knit plain to the end of the row, cast on 1 stitch.

**4th row.**—K.1, purl to the end of the row, cast on 1 stitch.

Repeat from the 1st to the 4th row until there are 64 stitches on the needle, then repeat the 3rd and 4th rows, until there are 76 stitches on the needle.

Work 16 rows without shaping.

Decrease once at each end of the needle in the next and every following 10th row until 58 stitches remain.

Continue without shaping, until the work measures 17 inches from the commencement, ending with a purl row.

In the next row, K.1, \* K.2 tog., K.3, repeat from \* to last 2 stitches, K.2 tog.

Using the No. 12 Needles, in the following row, K.2, \* P.1, K.1, repeat from \* to the end of the row.

Repeat this row for 3 inches.

Cast off loosely in rib.

Work another Sleeve in the same manner.

**THE EMBROIDERY.**—Work a border, as given in the chart, round each sleeve above the cuff, and above the ribbing of the back and each front, and along the bottom of each section of the Collar.



LADY'S COAT-JUMPER, "NANCY" DESIGN

Instructions on page 4—PATON'S "SUNNY" SPORTS WOOL.





Work a pattern, as given in the chart, on each front. The embroidery is worked as follows:— Bring the needle up in the centre of the right-hand stitch of a row (below the stitch to be covered), and slip it under the second stitch above. Put the needle back where it was brought up, and bring up again in the next stitch to the left.

**THE COLLAR.**—Using the No. 9 Needles, cast on 101 stitches. **1st row.**—Knit plain.

**2nd row.**—K.1, purl to the last stitch, K.1. Repeat these 2 rows once.

**5th row.**—K.5, \* increase once in the next stitch, K.14, repeat from \* to the last 6 stitches, increase once in the next stitch, K.5.

**6th row.**—K.1, purl to the last stitch, K.1. Repeat the 1st and 2nd rows twice.

**11th row.**—Increase once in the first stitch, K.3, \* increase once in the next stitch, K.9, repeat from \* to the last 4 stitches, increase once in the next stitch, K.3 (120 stitches).

**12th row.**—K.1, purl to the last stitch, K.1.

**13th row.**—K.20, turn.

**14th row.**—K.1, purl to the last stitch, K.1. Repeat the 13th and 14th rows four times.

**23rd row.**—K.1, increase once in the next stitch, K.7, increase once in the next stitch, K.8, increase once in next stitch, K.1. Work 11 rows in plain, smooth fabric. Cast off.

Join in wool, and work on each 20 stitches in the same manner.

**TO MAKE UP THE JUMPER.**—With a damp cloth and hot iron, press carefully.

Sew up the side, shoulder and sleeve seams. Sew in the sleeves, placing seam to seam. Sew the collar in position, placing the ends to the edges of the fronts. Work 1 row of d.c. round each section of collar. Sew on buttons to correspond with button-holes. Make two lengths of cord, finish each with a tassel, and sew to each side of the neck.

**LADY'S COAT-JUMPER—**

“Nancy” Design. (Illustrated on page 3.)

**MATERIALS:**—1 lb. PATON'S “SUNNY” SPORTS Wool—the original was worked with 12 ozs. Persian Rust (shade 02688), and 4 ozs. White. Two No. 6 “BEEHIVE” Knitting Needles, measured by the Beehive Gauge. Fourteen Buttons. A Belt.

**MEASUREMENTS:**—Length from top of shoulder, 22 ins. Width all round at under-arm, 32 ins. Length of sleeve seam from under-arm, 18 ins.

☑ **Work at a tension to produce 4½ stitches to the inch.**

**THE BACK.**—Using the Persian Rust Wool, cast on 71 stitches.

**1st row.**—\* K.1, P.1, repeat from \* to the last stitch, K.1.

Repeat this row five times.

Work 6 rows in plain, smooth fabric.

**13th row.**—K.23, K.2 tog., K.21, K.2 tog., K.23.

Work 11 rows in plain, smooth fabric, also after the 25th and 37th rows.

**25th row.**—K.22, K.2 tog., K.21, K.2 tog., K.22.

**37th row.**—K.21, K.2 tog., K.21, K.2 tog., K.21.

Proceed as follows:—

**1st row.**—K.21, increase once in the next stitch, K.21, increase once in the next stitch, K.21.

Work 11 rows in plain, smooth fabric, also after the 13th row.

**13th row.**—K.22, increase once in the next stitch, K.21, increase once in the next stitch, K.22.

**25th row.**—K.23, increase once in the next stitch, K.21, increase once in the next stitch, K.23.

Continue without shaping until the work measures 15 inches from the commencement.

Cast off 4 stitches at the beginning of each of the next 2 rows.

Decrease once at each end of every alternate row four times.

Continue without shaping until the work measures 21 inches from the commencement.

Shape for the shoulders as follows:—

**1st and 2nd rows.**—Work to the last 6 stitches, turn.

**3rd and 4th rows.**—Work to the last 12 stitches, turn.

**5th and 6th rows.**—Work to the last 18 stitches, turn.

**7th row.**—Work to the end of the row. Cast off.

**THE RIGHT FRONT.**—Using the Persian Rust Wool, cast on 27 stitches.

Work 6 rows in Moss Pattern.

**7th row.**—(K.1, P.1) twice, K.1, knit plain to the end of the row.

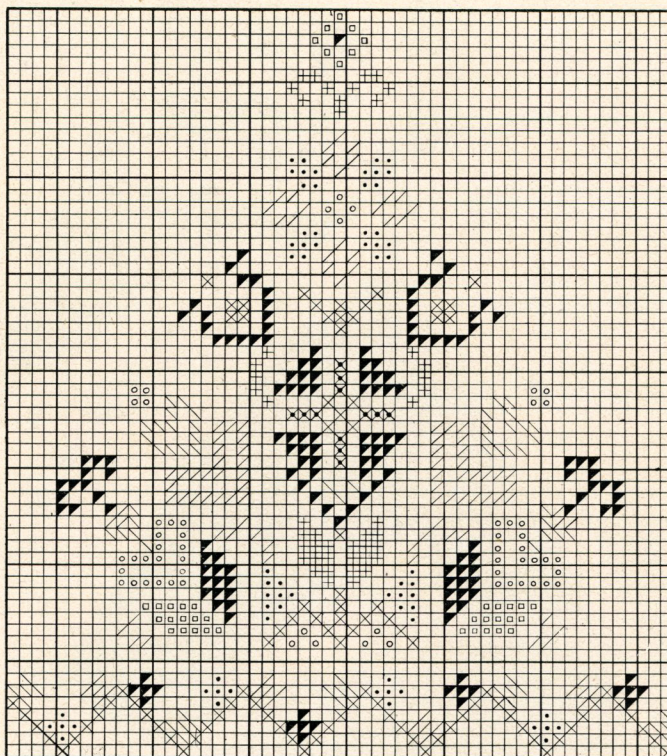


CHART FOR EMBROIDERY—“ANNETTE” DESIGN.

- Crimson No. 5776.
- Purple No. 604.
- ⊠ Deep Blue No. 5409.
- ⊞ Deep Green No. 5410.
- ⊞ Light Blue No. 5407.
- Light Green No. 5908.
- ⊠ Dark Brown No. 519.
- Yellow No. 5377.
- Orange No. 5380.

