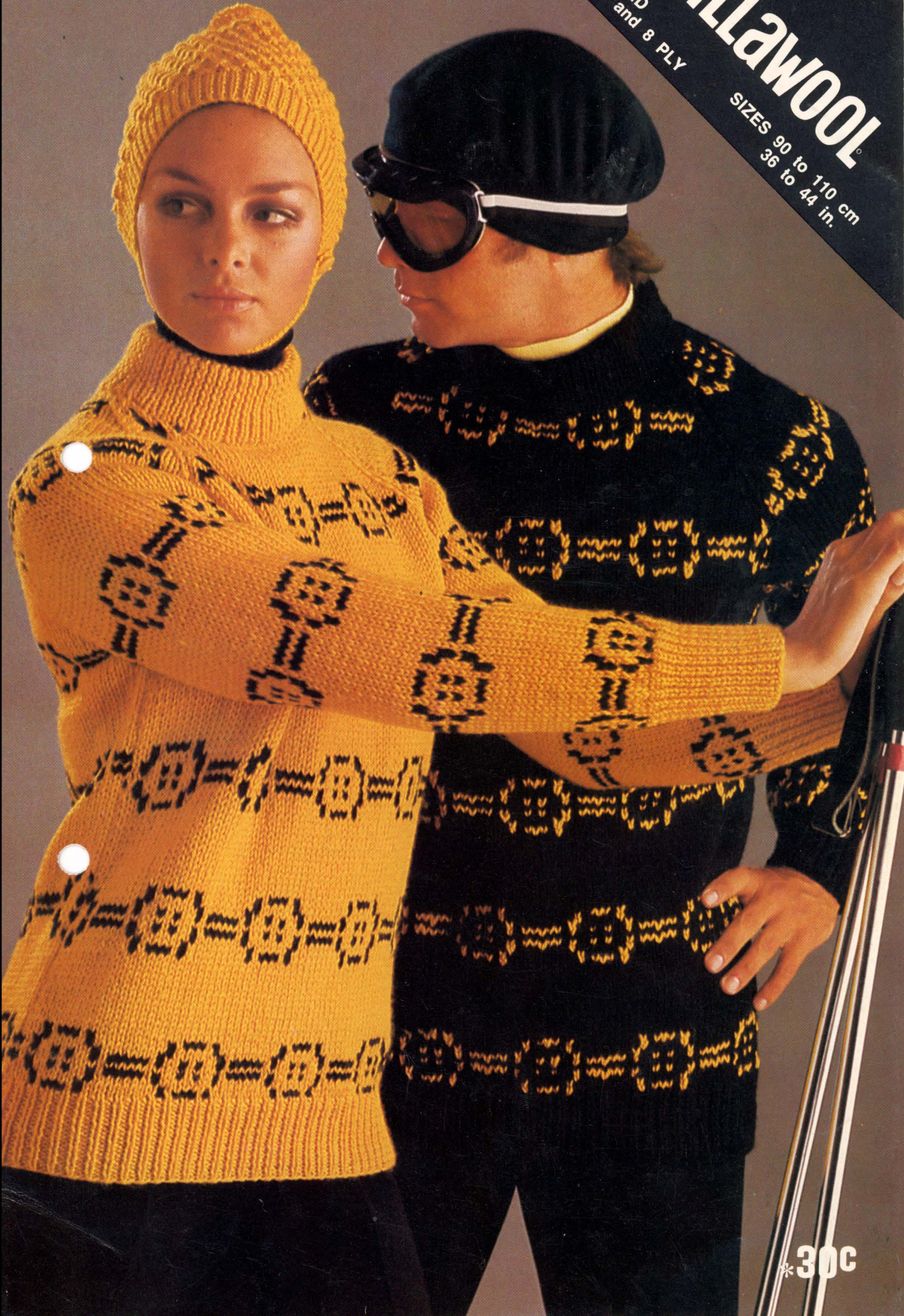


L 361

KNITTED  
in 12 and 8 PLY

# Villawool

SIZES 90 to 110 cm  
36 to 44 in.



\*30C



# 12 and 8 Ply Instructions

## MATCHING RAGLAN STYLE JUMPERS AND CAP WITH CHIN STRAP

### Materials:

#### Jumper:

##### VILLAWOOL SLALOM 12 PLY

(100% machine washable shrinkproof and water repellent wool)

Main Colour (MC) .....	.....	.....	.....	.....	.....
Contrast Colour (CC) .....	.....	.....	.....	.....	.....
Main Colour (MC) .....	.....	.....	.....	.....	.....
Contrast Colour (CC) .....	.....	.....	.....	.....	.....

or

##### VILLAWOOL 12 PLY

(100% machine washable shrinkproof wool)

Main Colour (MC) .....	.....	.....	.....	.....	.....
Contrast Colour (CC) .....	.....	.....	.....	.....	.....
Main Colour (MC) .....	.....	.....	.....	.....	.....
Contrast Colour (CC) .....	.....	.....	.....	.....	.....

#### Cap:

##### VILLAWOOL 8 PLY

(100% machine washable shrinkproof wool)

Pr each Nos 4, 8, 9 and 10 Aero Needles.

1 Astor Button.

#### MEASUREMENTS:

Actual Garment Size .....	Her or Him	cm in.	95	100	105	110	115
			Length from Shoulder .....	Her	62.5 24½	63.5 25	65 25½
Sleeve seam .....	Her	43 17	43 17	43 17	43 17	43 17	
	Him	48 19	48 19	48 19	48 19	48 19	

Cap ..... To fit average size Head

#### TENSION:

**12 Ply:** 8 sts and 11 rows to 5 cm (2 in.) on No. 4 needles or needle size to give correct tension.

**8 Ply:** 13 sts to 5 cm (2 in.) over patt on No. 8 needles or needle size to give correct tension.

## JUMPER

#### BACK:

With No. 8 needles, MC, cast on 80, (84 : 88 : 92 : 96) sts, work in rib of K1, P1 for 7.5 cm (3 in.). Change to No. 4 needles, beg with knit row, cont in st st working 9 rows from Graph No. 1 beg at arrow marked for each size, then rep 16 sts 5 times (all sizes) then work to arrow as marked for each size. With MC work 13 rows, then work 9 rows of Graph No. 2 in same way. With MC work 13 rows.

Rep these 44 rows inclusive. Cont until 41 cm (16 in.) for Her 43 cm (17 in) for Him (or length req) ending on purl row.

#### Shape Raglans:

Cast off 3 sts at beg of next 2 rows.

**Next row:** K1, sl 1, K1, pssso, work to last 3 sts, K2 tog, K1.

#### Next row: Purl.

Rep last 2 rows until \* 26, (26 : 28 : 30 : 30) sts rem. Cast off on next row.

#### FRONT:

Work as Back to \* 38, (38 : 40 : 42 : 42) sts rem. ending on purl row.

#### Shape Neck:

**Next row:** K1, sl 1, K1, pssso, work until 11 sts on needle, cast off loosely centre 14, (14 : 16 : 18 : 18) sts, work to last 3 sts, K2 tog, K1.

Cont on last 11 sts, dec 1 st at Neck edge on every 2nd row 4 times, at same time cont to shape Raglan

on every 2nd row until 2 sts rem (all sizes). Work 2 sts tog, fasten off.

Ret to rem sts, join yarn at Neck edge and finish to correspond with other side.

#### SLEEVES:

With No. 8 needles, MC, cast on 48, (48 : 48 : 52 : 52) sts, work in rib of K1, P1 for 10 cm (4 in.). Change to No. 4 needles, beg with knit row, cont in st st.

Work from Graphs rep centre 16 sts for sizes 90 : 95 : 100, (36 : 38 : 40). For sizes 105 : 110, (42 : 44) beg at arrow marked for 95 (38) size, rep 16 sts 3 times then work to arrow marked for 95 (38) size.

Rep 44 rows as Back, at same time inc 1 st each end of every 10th row until 54, (58 : 60 : 62 : 66) sts taking all inc sts into patt. Cont until Sleeves measure 43 cm (17 in.) for Her, 48 cm (19 in.) for Him, (or length req) ending on purl row.

#### Shape Raglans:

Cast off 3 sts at beg of next 2 rows.

**1st row:** K1, sl 1, K1, pssso, work to last 3 sts K2 tog, K1.

**2nd row:** Purl.

**3rd row:** Knit.

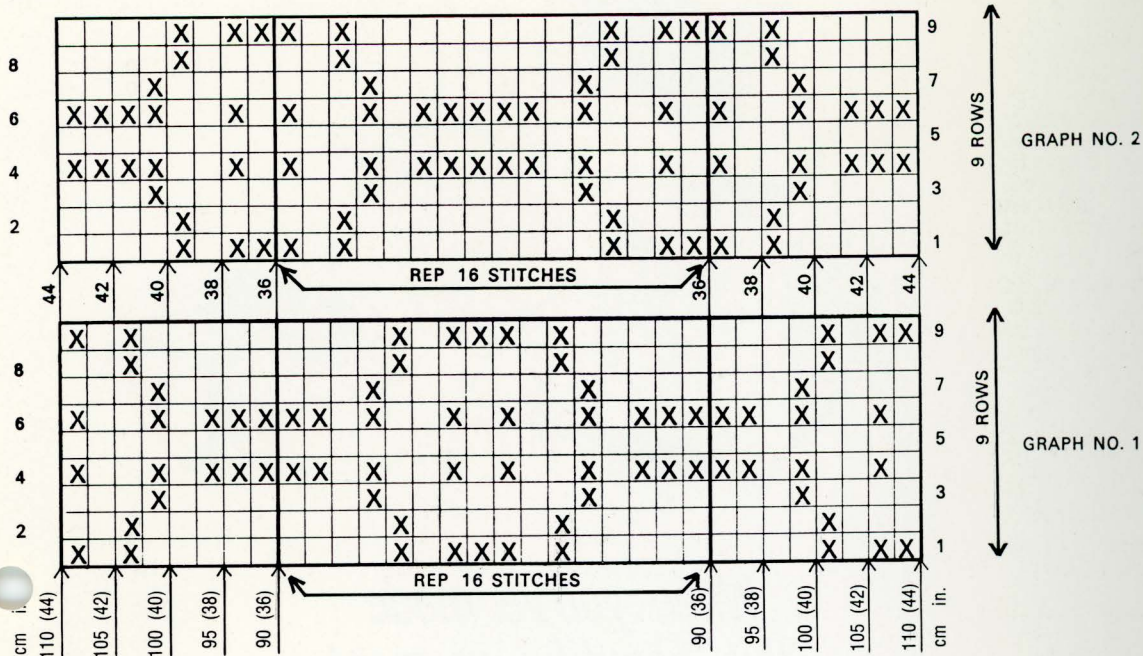
**4th row:** Purl.

Rep last 4 rows twice then rep 1st and 2nd rows until 6 sts (all sizes) rem. Work 1 row and cast off on next row.

**TO MAKE UP:** Press work on wrong side. Using small back st sew up 2 Front and right Back Raglans. Press seams open.



KEY:  M C  C.C



**NECK BAND:** With right side facing, No. 8 needles, MC, neatly pick up and knit 99, (103 : 107 : 111 : 111) sts on Neck edge. Work in rib of K1, P1 until 10.5 cm (4½ in.) then cast off loosely ribwise on next row.

**TO FINISH OFF:** Sew up rem Raglan and Neck Band ends. Press seams open. Sew up side and Sleeve seams. Press seams open. Fold Neck Band in half to inside and loosely slip stitch down.

### CAP

#### Pattern

- 1st row: (right side) Purl.
  - 2nd row: (K1 P1 K1 in next st, K3 tog) rep to end.
  - 3rd row: Purl.
  - 4th row: Knit.
  - 5th row: Purl.
  - 6th row: (K3 tog, K1 P1 K1 in next st) rep to end.
  - 7th and 8th rows: As 3rd and 4th rows.
- Rep these 8 rows inclusive.

With No. 10 needles cast on 144 sts, work in rib of K1, P1 for 4 cm (1½ in.). Change to No. 8 needles and patt. Cont until 16.5 cm (6½ in.) ending on knit row. Change to No. 9 needles and proceed as follows:  
**Next row:** (P2 tog twice, P28, P2 tog twice) rep to end. Keeping patt in order cont to dec in this way on every 2nd row having 4 sts less each time between dec sts until 16 sts rem. Break yarn leaving length and thread through rem sts, draw tog, fasten off.

#### CHIN STRAP:

With No. 10 needles cast on 9 sts.  
**1st row:** K1, (P1, K1) rep to end.  
**2nd row:** P1, (K1, P1) rep to end.  
 Rep these 2 rows until work measures 20.5 cm (8 in.) or length req.  
**Next row:** Rib 3 sts, cast off 3 sts, rib 3 sts.  
**Next row:** Rib and cast on 3 sts over cast off 3 sts. Cast off ribwise on next row.  
**TO MAKE UP:** Sew up back seam and press seam open. Attach chin strap on right side and sew Button on left side. (Adjust position as req). Make Pom Pom and sew on top of Cap.

#### ABBREVIATIONS:

beg = begin/ning; cm = centimetre/s; cont = continue; dec = decrease/ing; foll = following; inc = increase/ing; in. = Inch/es; K = knit; patt = pattern; st/s = stitch/es; pss = pass slip stitch over; P = purl; rem = remain/ing; rep = repeat; req = required; ret = return; sl 1 = slip 1 stitch; st st = stocking stitch: repetitious of 1 row knit, 1 row purl; tog = together;

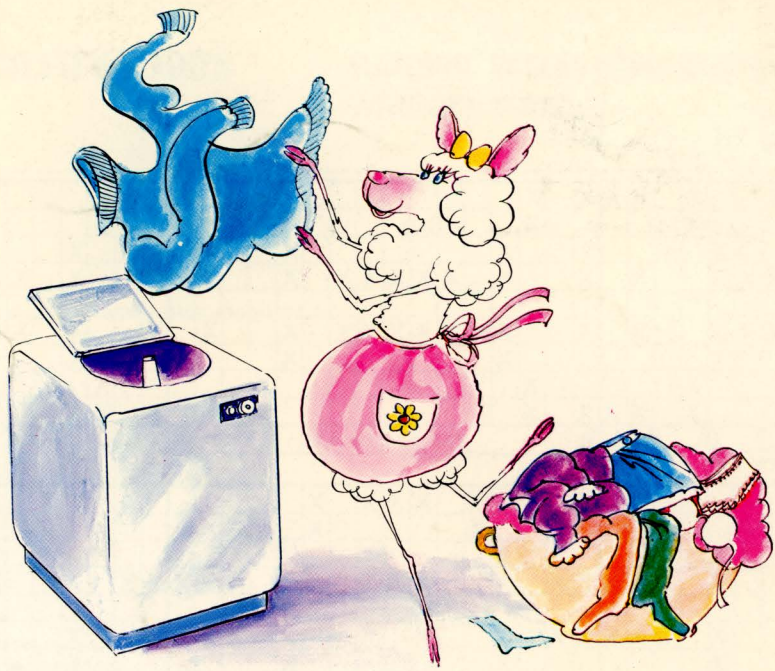
Remember, two things are vitally important for the success of your Villawool design. Firstly, you **must** use the yarn specified. Secondly, your tension must be exactly as stated in instructions.

#### THE IMPORTANCE OF TENSION

Before commencing garment always knit a sample 10 cm (4 in.) square in the pattern stitch. Place a pin each side of number of stitches required for correct tension (see tension instructions) then measure stitches between pins with a tape measure. If less stitches than required use smaller needles, if more stitches use larger needles.

\* Recommended and Maximum Price only.





*When you've made  
this beautiful garment  
and taken a lot of care  
don't be frightened  
to machine wash it  
because it's guaranteed  
to wash and wear.*

from ... **Guaranteed  
machine washable  
shrinkproof** ... yarn

Washes Better Every Time



**VILLAWOOL**