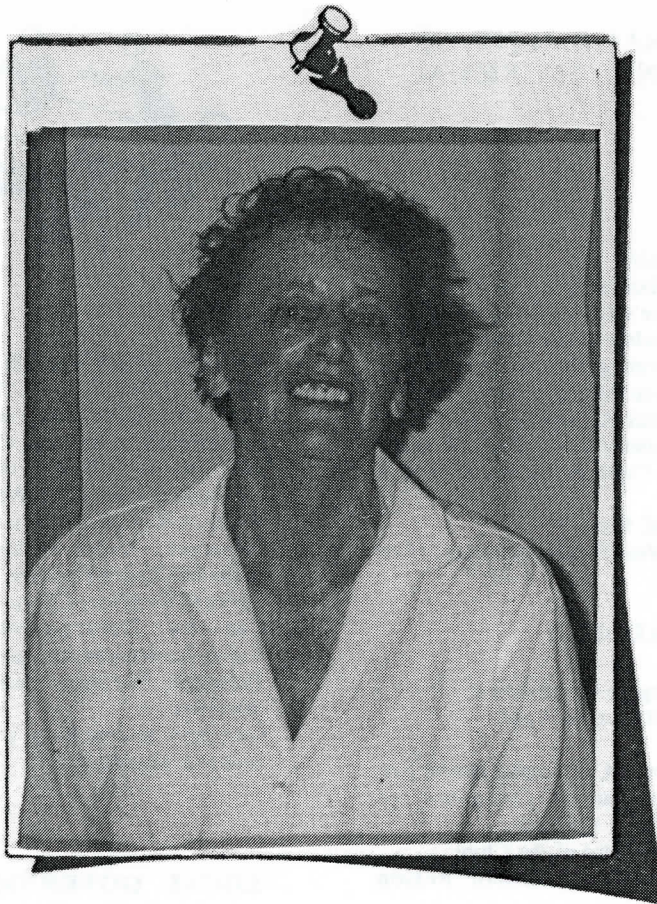


**MELBOURNE'S
LIVING
MUSEUM
OF THE WEST INC**

**ANNUAL REPORT
1992**



President's Message

I have pleasure in introducing the report of Melbourne's Living Museum of the West for the year ending 31 December 1992. The year, I believe, has been one of MLMW's most rewarding and successful since the Museum began in 1984. A careful reading of the reports in the pages that follow will reinforce this belief. There has been participation in several community activities, including 'Frogwatch'; events at the Newmarket Saleyards site at Lynch's Bridge; our weekly show on the regional radio station 3WRB; Community Aid Abroad's presentation of the Aboriginal exhibition 'Munupi Dreaming' and the launch of our chaff mills display - which involved local chaff mill and farming families.

As well, there are contacts with many schools and educational institutions and a continuing flow of new resources. The Koorie Gardening Scheme has increased involvement with our Koorie community, as well as helping to develop Pipemakers Park. Our financial management, with the advice of Ron Angwin and the ability of Peter Haffenden, is along sound lines.

May I publicly convey my appreciation of the support of the Management Committee, and the untiring dedication of the staff. Thanks are due also to the Western Region Commission and to Melbourne Parks and Waterways, in whose Pipemakers Park we operate. May MLMW long continue its role in the West!

Irene Wescott
President

IRENE WESCOTT

President, Melbourne's Living Museum of the West Incorporated since 1989.

Retired Secondary School Principal (Footscray Girls High School); has three grown children who also live in the region
Former Deputy-president: Western Institute; member: V.U.T. Council & V.U. T. Council Finance Committee, 1991-92.

President of Beta Sigma Phi in Williamstown; Vice President: Footscray Tennis Club; Treasurer: Westgate Golf Club Associates; Member: National Trust Footscray and Williamstown Branch; Williamstown Historical Society; Angair Conservation Society; Great Ocean Road Committee.

COMMITTEE OF MANAGEMENT OF MELBOURNE'S LIVING MUSEUM OF THE WEST 1992



PETER SOMERVILLE

Vice-President

Owner of the cruise boat 'Blackbird'
Owner and Cruise Director of Maribyrnong River Cruises
Foundation member: Melbourne's Living Museum of the West; Honorary Member: Essendon Canoe Club;
Member: Friends of the Maribyrnong Valley Conservation Group Inc.; West Tour; Western Metropolitan Group of Historical Societies; Charter Boat Association; Footscray Community Arts Centre ; Advisory Committee, Western Region Commission; former Council Member: Royal Historical Society of Victoria.
Past president : Keilor Historical Society
Chairperson: for Community, West Footscray Rotary Club
RHSV Award of Merit 1992

FREDRICK JAMES MADDERN

Vice President

Executive Director: Western Region Commission
Board Member: Footscray Society for the Aged & Footscray Y.M.C.A
Member :Committee of Management, Gwennap Hostel (for the aged); Sunshine Skillshare; National Committee for Voluntary Regional Organisation of Councils;
Footscray Rotary Club (former director of the Club)
Chairman: Management Committee, Western Region Group Training
Honours: Awarded an O.B.E for service to the Community

COMMUNITY REPRESENTATIVES

JUDY GLEESON

Lecturer: Communication Studies, Faculty of Arts, V.U.T. (St Albans Campus)
Studies: working for an M.A by research (This involves an examination of Communication methods used in museums.)
Development of a course which will teach academic discourse skills within the framework of the Western Region to beginning students
Member: Arts Acquisition Committee of the Victoria University of Technology.

RHONDA HALLET

Lecturer: Education, Development Department, V.U.T.(Footscray Campus)
Working with non-English speaking background (NESB) students in Bachelor of Information Science course
Currently completing Master's Degree on Teaching English as a Second Language (Monash)
Board Member: Footscray YMCA
Member: Footscray Football Club; Footscray Historical Society; Disadvantaged School Program Committee; Footscray Primary School Council (Parent Representative)

MELISSA BRICKELL

Graduate of Deakin University
Formerly employed as Koori Education Officer, Museum of Victoria. Working with Koori Education Unit, Ministry of Education until late 1992 when she moved to the Northern Territory. Undertaking Graduate Diploma in Aboriginal Studies. Member of MLMW Koorie Project Steering Committee.

SUSAN JENNISON

Subject Librarian V.U.T. Faculty of Arts, Footscray Campus, with responsibilities for three special collections:- Australian Collection, Crow Collection Elda Vaccari Collection of Multicultural Studies.
Involvement with the Western Region Ethnic Project and Western Region Commission
President : Keilor Historical Society, involved in local projects - Keilor Heritage Trail and Panels; Arundel Bridge Project; Caroline Chisholm Shelter Shed Project; Keilor Cemetery ; Environmental Heritage Festival ; Filming of Video women past and present of Keilor
Delegate: Western Metropolitan Group of Historical Societies
Currently undertaking MA in Public History course at Monash University

LOCAL GOVERNMENT REPRESENTATIVES

CR. MARIE EARLE

City of Footscray representative

Councillor: City of Footscray
Board Member : Footscray YMCA, Footscray Community Arts Centre
Committee of Management member: Yarraville Neighbourhood Watch; Working Women's Centre; Cowper St Footscray Croatian Young Peoples Group.
Steering Committee member: Yarraville Community Centre (Council Rep.) Member: Footscray Community Activities Co-ordinating Committee, Natural Resource League, Western Region Arts Committee, Maribyrnong Advisory Committee, Lower Yarra Advisory Committee.

JOAN BRYANS

City of Altona representative

Hon Secretary: Ulster Society (Melbourne)
Delegate: National Council of Women (Vic) and Western Metropolitan Group of Historical Societies
Former secretary: Altona Historical Society
Newsletter Editor: Altona Historical Society
Christmas casual employee - Myer (Melbourne)
Member: National Trust (Vic)

TOM BRYANS

City of Altona representative

Full-time employee: Commercial Polymers, Altona
Former president: Altona Historical Society
Committee member: Altona Historical Society; Ulster Society (Melbourne)
Member : Selection Committee, Finance Committee, and Management Committee of St.Andrew's Presbyterian Church, Williamstown, National Trust(Vic.); R.H.S.V.
Trustee: Altona Homestead
Delegate: Western Metropolitan Group of Historical Societies

CR. IRENE SHAND**City of Sunshine representative**

Councillor: City of Sunshine

Employed by Australian Taxation Office

Member: WRC - West Tour; Sunshine Child Care Centre;
 Braybrook Maidstone Community Health Centre;
 Braybrook Branch ALP; Polish Community Victoria;
 Pennell Reserve Management Committee;
 Maltese Own Band

CR. STUART SOUTHWICK**City of Werribee representative**

Managing Director, WIK Industries, Laverton

Councillor: Werribee Shire / City for 20 years

Portfolio Holder: Finance, Waste Management
 (Recycling); Plant.

Member: Major Projects Sub-Committee; Transport

Sub-Committee; Special Award Sub-Committee

Formerly Werribee Council Representative: Metropolitan

Municipal Association

Foundation President: Werribee Industries Liaison and

Development Committee

Member: Laverton Secondary College Council; Laverton

Community Chest; Western Suburbs Environmental Task

Force; Werribee - Altona Liaison Committee; TRY Youth

and Community Services.

Patron: Laverton Golden Age Club

Chairman: Laverton Swim Centre Committee

EX-OFFICIO**OLWEN FORD (ex-officio)****Director Melbourne's Living Museum of the West since 1984**

Member: Footscray Campus Advisory Committee,
 Victoria University of Technology, Hunt Club Community
 Centre Committee, Australia & New Zealand History of
 Education Society

Honorary life member: Sunshine & District Historical
 Society

Former member: Werribee Park Advisory Committee;
 Western Region Arts Advisory Committee.

STAFF REPRESENTATIVES (rotating)**ELIZABETH MCKINNON**

Art, Exhibition & Design consultant: MLMW

Secretary: Footscray Community Arts Centre Board of

Management

Treasurer & Community Liaison: Maribyrnong River

Edge Art Movement Inc.

Vice-president: George Seelaf Western Arts

Development Inc.

Member: Community Arts Network; National
 Association of Visual Arts; Circus Association of
 Australia; Greenpeace.

CO-OPTED MEMBERS**PROFESSOR JOHN MC LAREN**

Professor: Department of Humanities, V.U.T. 1991

Head: Department of Humanities, Footscray Institute of

Technology, 1976-89

Board Member: Footscray Community Arts Centre, 1978-

92 (Chair 1987-90)

Associate Editor: *Overland*, 1968-91; Board Member,

1991.

Editor: *Australian Book Review*, 1978-86

President: International Pen - Melbourne Centre, 1991-

ELIZABETH WALSH

Director: Footscray Community Arts Centre

Represents F.C.A.C. on the Community Arts Alliance

Member: Arts Training Victoria - Performing Arts Industry

Advisory Panel; Yarraville Community Centre

Redevelopment Committee; City of Footscray Arts

Acquisition Award Committee; Saltwater River Festival

Committee; Victorian Women's Trust; Circus Oz; the

Australian Circus Association; Community Arts Network;

Arts Industry Council; Regional Arts Advisory Committee

of Victorian Ministry for the Arts.

Life Member: Flying Fruit Fly Foundation

BRIAN HUBBER

Rare Books Librarian, State Library of Victoria

Formerly librarian at the Victoria University of

Technology (Footscray campus).

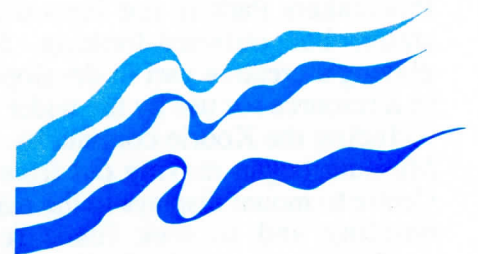
Involved with WESTDOC and the publication of *Access to**the West*.**GOVERNMENT REPRESENTATIVES****LOIS KRUGER****Ministry of Education representative**

Inner West School Support Centre

History Consultant

HELEN MILLICER**Department of Planning representative**

Area Improvement Program

HILARY NEWTON**Manager, Museums Unit****Arts Victoria****Observer****ARTS VICTORIA**

Overview

When the Living Museum staff were planning for 1992, they thought that the Museum would be widening its scope and would be taking on a bigger job. In fact, the museum has been extending its activities far more than might have been predicted - in many directions, but at the same time building on the work of previous years.

Some of our displays and exhibitions reflect the cumulative nature of community links and involvement. The Schutt & Barrie chaff mills display developed out of contacts made with farming families and chaff mill workers back in 1987, when Gary Vines began collecting material for his chaff mills report. In a series of steps since then and with the help of local people, we reached the point where a substantial display commemorated this important regional industry. Similarly, the people who once worked at the Newmarket saleyards have co-operated with the Museum in a number of projects ranging from production of a video, oral history tapes, heritage panels, a brochure, several displays and, most recently, a mosaic mural.

One of the most remarkable aspects of 1992 has been the growing involvement of Koorie people - through the Koorie Project with Robert Mate Mate, through the Koorie Gardening Team, through a new Koorie project, *Brenbeal*, set up by Larry Walsh and through Kylie Freeman, our trainee secretary. Two major Aboriginal concerts, *Ilbijerri* in January and *Nutbroki* in July, were exciting events, unlike anything the Museum has been involved in before. We have been especially fortunate to be working in with the Koorie Gardening Team. They took on the huge task of stage managing, catering and organising the practical aspects of the *Nutbroki* concert and have undertaken a number of projects in Pipemakers Park. They are now able tour guides to groups visiting the park.

It has become clear that the Museum's work in Pipemakers Park is not inward-looking and static, but outward-looking. For we are playing a creative part in developing the park as a resource for use by the wider community, including the Koorie community. In 1992 the Museum began moving out from the Visitor Centre to mount displays in the main bluestone building and to seek funds for a major arts/heritage project in the Hume Pipe 'Bottom Factory' area known as 'the Slab'. All this is

relevant to our role of interpreting the park in the context of the river valley and the region and entails working in with Melbourne Water in planning the management and development of the park as a co-ordinated whole. Our Committee of Management has had discussions with managers in Melbourne Water regarding a Pipemakers Park Management Plan and we expect that this dialogue will be ongoing.

The Museum has also been investigating environmental education opportunities for those who are intellectually or physically disabled - in the north and western region and in Pipemakers Park itself. Our traditional educational work continues, both in terms of assisting individual students and teachers and providing talks, tours and workshops for students and community groups. Our role as a provider of training is expanding. We have kept up links with local organisations, especially historical societies and environmental and conservation groups, but also with tertiary institutions, including the Victoria University of Technology.

Reports on the Living Museum's regional and local activities during 1992 can be found in the following pages, set out as the year unfolded. We have taken a pictorial approach, focussing on people, since this is, above all, a people-oriented museum. We show how our work of documenting and interpreting our region is now a means of paying our way, through consultancies in the areas of archaeology, art and exhibitions. We owe especial thanks to Arts Victoria, formerly the Victorian Ministry for the Arts, for its encouragement and its substantial financial support for our work as an innovative pilot museum. We also thank the philanthropic trusts and government departments which have funded particular projects. The Department of Planning's Area Improvement Program has made possible a number of important Museum projects over the years. We acknowledge its input and greatly regret the ending of the program. Our Committee of Management and our members represent a broad network of regional links and we thank them for their contribution. I especially thank the Museum staff who have worked immensely hard during 1992 and who have all contributed to this Annual Report. We expect that 1993 will be an even more challenging and exciting year.

Olwen Ford
Museum Director



Bill Clifton, who worked most of his life at Newmarket Saleyards as a drover, is an integral part of our Living Museum, a living thread within our fabric. He and his wife Joyce have participated in many Museum projects on Newmarket Saleyards, sharing their knowledge of this vast workplace and the immense pastoral industry which is a key to the story of Melbourne's western region over the past 158 years. Bill is a good example of the cumulative nature of community involvement, from our first oral history recordings in 1984 to our most recent innovative interpretation of Newmarket Saleyards through mosaic. Bill and Joyce have been constant advisers, monitors and supporters .

HOYS

GIVEAWAY LINE

This week's competition is for 10 double passes to see movie, "Spotswood" at Hoys & Highpoint. The passes can be used for any session during the film's run. To be in the running for one of the double passes, simply call the telephone number listed below and speak your name, address and telephone number slowly and clearly after you hear the tone.

The winners of last week's competition - one month's free aerobics, swim, sauna and spa at the Westgate Health and Fitness Centre, on the corner of Grievae Pde and Doherty's Rd - were Lynda Opuni, of West Sunshine; Joanne Dixon, of St Albans; Mrs Bowey, of Melton South and Carmen Becker, of Brooklyn.



PH: 005513280

Raffle winners

JOHN and Jean Harbus of Monash St, Sunshine, won a Mitsubishi car in the Sunshine Council "Early Bird" raffle.

The couple qualified to enter the raffle by paying their rates early.

The Harbus' did not own a car before the raffle and described the win as "a gift from heaven." Mrs Harbus can drive, but her husband cannot.

The council organised the raffle to encourage people to pay their rates early.



JEAN and John Harbus of Sunshine won a new car in the Sunshine Council rates raffle.

Of massive wombats, Koories and Black Out Day

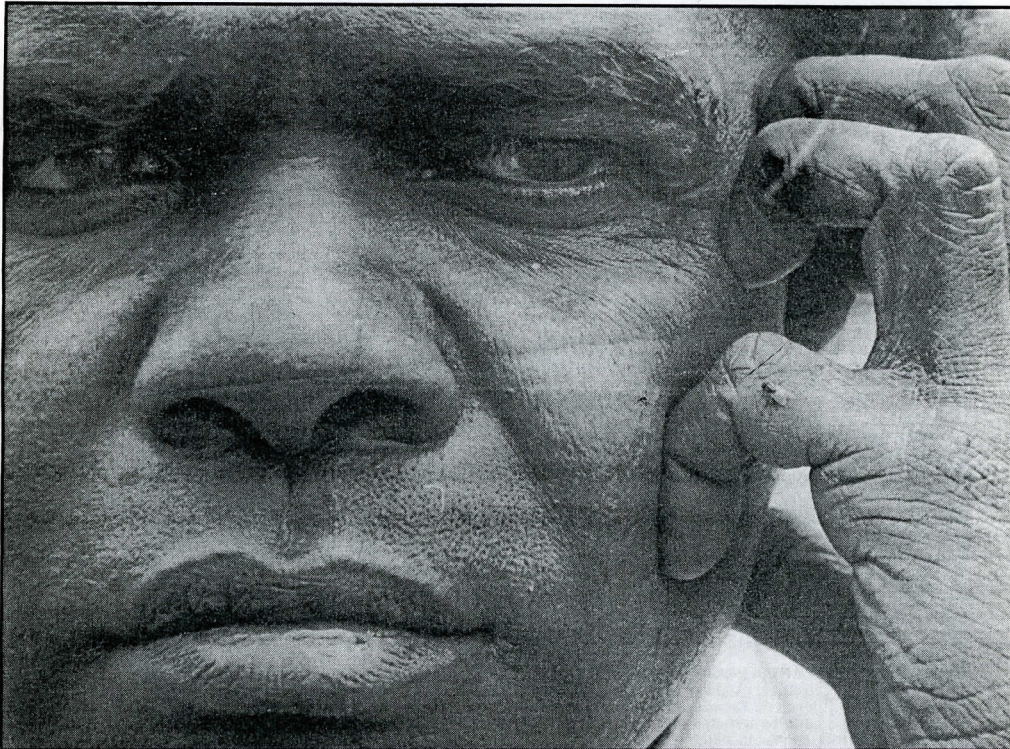
By
**CAROLINE
OVERINGTON**

WHEN ROBERT Mate Mate talks to school children about 12-foot kangaroos and hippopotamus-sized wombats, they stare at him in wonder. Who is this strange man with the very black skin and no front teeth and wild, wonderful stories?

Robert Mate Mate is Aboriginal project worker at the Living Museum of the West at Pipemakers Park. His role is to create a book of the Aboriginal dialects called *Wurundjerri* and *Bunurong*, the languages of the Aboriginal people who lived in what is now Melbourne's west.

Mate Mate (it means "night raiders" - Robert Mate Mate's family was involved in a sad period of Australian history called the Hornet Bank Station Massacre, which occurred in October 1857) also talks to school children about Aboriginals who lived on the Maribyrnong River and the Kororoit Creek.

He has organised "Black Out Australia Day", a concert performed by Aboriginal



ROBERT Mate Mate, working in Sunshine. It is his role to amaze local children with tales of giant kangaroos and super-size wombats. Picture: ADAM ELWOOD.

musicians, poets and corroboree dancers, which will be held between 1pm and 4pm on Sunday 26

January at Pipemakers Park, Van Ness Ave, Maribyrnong (opposite Highpoint shopping centre).

Mate Mate has been working at Pipemakers Park since July and expects to work there for

another 18 months. He is not a Koori (those Aboriginals lived only in Victoria) but a Murrie, an

Aboriginal from Queensland. "I grew up 300 miles inland of Rockhampton in

central Queensland, living a traditional Aboriginal life on a settlement, with no television and no radio, just watching corroborees and learning dreamtime stories," he said.

"My son (born to a Victorian woman of Scottish heritage) was born in Victoria and this is where my interest in the tribes of the west came about."

Mate Mate first came to Victoria as the Queensland lightweight boxing champion. He performed on "TV Ringside", a boxing show, liked the weather and stayed.

He has studied the various languages of different Aboriginal tribes living in the west and tells amazing stories about our landscape. He believes Port Phillip Bay was once a land basin, and Aboriginals could walk from Williamstown to Geelong.

There were about 8000 or 10,000 Aboriginals living in the west on the first Australia Day 203 years ago and some evidence of their lives remains: a burial site in Brimbank Park, a scarred tree from which a wooden dish was cut in Keilor, a fish trap in Braybrook, where the Maribyrnong River and the Kororoit Creek meet.

An Aboriginal cranium was found in Dry Valley, Keilor, in about 1960.

"We have strong evidence that there were

● To Page 2

Ranger outrage

By CAROLINE
OVERINGTON

SHANE Mirams, the man chosen to be Sunshine's new dog ranger, has a criminal conviction for aggravated cruelty to an animal.

His pending appointment has created a furor within the council, with councillors divided over whether Mr Mirams should be offered the job.

Mr Mirams was convicted of aggravated cruelty to an animal in on 3 October 1990, after he killed a mongrel dog.

Mr Mirams said the dog, found in an Ardeer paddock, was "dehydrated and in pain." He killed it with a blow to the head.

Two Ardeer residents who saw the incident reported Mr Mirams to local police. He was convicted and fined \$500.

Officially, the crime of aggravated cruelty has occurred when: "a person commits an act of gross cruelty against an animal which leads to death or disablement of an animal."

Mr Mirams said he did not think his actions constituted such an offence.

"I believe I did the right thing by that dog but I would now turn a blind eye, it has caused so much trouble," Mr Mirams said.

Mr Mirams is currently a plant operator in the parks and gardens department at Sunshine Council. He has worked for the council for eight years and believes he is "highly qualified" to act as dog ranger.

His appointment is being disputed by Cr Geoff White, who will move to stop an offer of employment being made to Mr Mirams.

The council unanimously approved the appointment of Mr

Mirams to dog ranger when George Hill retired from the position after 35 years of council service.

Cr Geoff White has since placed a notice of motion to rescind the resolution to offer the position to Mr Mirams.

Mr Mirams said he knew the council had initially approved his appointment to the position and knew there was a move to rescind that appointment.

"At this stage, it is all rumor and innuendo. I have not officially been told I have not got the job, and I have not officially been appointed, either," Mr Mirams said. He admitted he had killed a mongrel dog and said it had been thrown out of a car.

"A local kid bought the dog to me and it was in a bad way. It was badly bruised and dehydrated," Mr Mirams said.

He said the dog did not have broken bones and was not bleeding but was in pain.

Mr Mirams said he believed the dog would not have survived the night. He said he did not attempt to move the dog to his home or call a veterinarian.

He said he was interviewed by people who understood why he had killed the dog and said he was qualified to act as dog ranger. "I have a lifetime of experience with animals," he said.

"I break horses in for a hobby, something I have done since I was 15 years old. I have also been droving cattle since I was 15 and working with cattle dogs."

Mr Mirams said his conviction for aggravated cruelty was one of a "number of small things I have done. I wasn't an angel when I was younger but I thought I did the right thing with the dog."

CAREERS and OPTIONS
STARTS PAGE 18

**SEPARATION
and
DIVORCE**

can affect your custodial rights, your financial affairs, your will, your tax and other aspects of your legal affairs. Talking to us early could save you from unexpected and/or costly mistakes.

Contact Peter Berry 397 2088
HANNEBERY, BOYLE & PARTNERS

BARRISTERS & SOLICITORS
85 Douglas Parade, Williamstown

Koorie Project

During 1992, Robert Mate Mate continued his work as the Museum's Aboriginal Project Officer, visiting groups, assisting researchers, speaking on radio, developing resources, organising concerts and networking with other indigenous peoples. This was all part of the Koorie Project, begun in 1991 and funded by the Lance Reichstein Charitable Foundation and the Stegley Foundation.

Robert spoke to a variety of community groups ranging from pre-school centres and kindergartens to scouts, church groups, school and university students and service clubs such as Rotary. A letter from Home Road Kindergarten, Newport, gives some idea of the impact of Robert's visits:

Thank you for your visit to our kindergarten ... It was thoroughly enjoyed by children and staff.

The children were encaptured by you and your stories, which led to much conversation, investigation and learning in the following weeks.

From your dreamtime stories, we continued to read others and the children drew and painted aspects of these...

It was probably the first time many of these children had seen and spoken to an Aboriginal person and your friendliness plus your exciting stories were a welcome exposure to Aboriginal life for these children.

Robert made contact with indigenous people and groups, including native Americans from the USA, such as Chief Lightning Bear, and from Central and South America. Robert was guest speaker at the Footscray Community Arts Centre, opening a concert run by the Five Hundred Years Committee to commemorate the years of colonisation since the arrival of Columbus in America. This was an introduction to the Year of Indigenous Peoples which is continuing throughout 1993.

In a number of appearances on 3LO, Robert made contact with a wider audience. He also appeared on 3WRB. He took part in the Koorie Festival at the Flagstaff Gardens, appeared at the Boite World Music Café in Fitzroy, and spoke at a festival in Mornington.

Barndana

Robert completed his work on the book 'Barndana', which means 'passing on the message'. This book includes the alphabetical arrangement of words from the Woiwurung language spoken by the Wurundjeri people, the people of the area that is now Melbourne. There are dreamtime stories and information about where to follow up further reference material. It is hoped that this book will increase awareness of the local Aboriginal heritage and will provide opportunities for a sharing of Aboriginal culture with non-Aboriginal people, including school children. Aboriginal Affairs Victoria have agreed to assist with the production costs of this book.



Robert Mate Mate talking to children at the Toolern Vale Pre-school Centre.

Ilbijerri/Talagon

The first main event of 1992 was an outdoor Aboriginal concert - *Ilbijerri Talagon* - in Pipemakers Park on Australia Day. Organised by Robert Mate Mate, as part of the Koorie Project, the concert was a great success, with several hundred people attending from the Koorie and non-Aboriginal community. This included many children and families and some overseas visitors.

The main performers were a dance group from the Mona Mona mission in North Queensland, who not only explained their dances but invited the audience to join in. Melissa Brickell read dreamtime stories and poetry. Queensland poet Lionel Fogarty read some of his own poems. Herbie Patten played on the gum leaf, accompanied by Sandy Atkinson on the steel pedal guitar. A modern element came from Grant Hansen's band, the Mercury Blues and local Koorie singer and song-writer, Brian Morley. A videotape has recorded the event.

This event was particularly exciting because as far as we know this is the first time Aboriginal people have gathered in any numbers to have a meeting with song and dance on the banks of the Maribyrnong for more than a hundred years.

Ilbijerri/Talagan

Signifying *coming together for a ceremony*. Ilbijerri is the dialect of the Wurundjerri tribe. Talagan belongs to the Bunurong language.

Free Concert performed on

BLACKOUT AUSTRALIA DAY

by Aboriginal musicians,
poets and corroboree
dancers

Sunday, 26 January 1992
1 - 4. p.m.

at Pipemakers Park, Van Ness Avenue, Maribyrnong
Melway 28 B10, opposite Highpoint City, on the banks
of the Maribyrnong River

Enquiries to Robert Ralph Mate Mate

Melbourne's Living Museum of the West Ph. 318-3544

Event funded by The Lance Reichstein Foundation & The Stegley Foundation

ADMISSION FREE



One of the Mona Mona Mission dancers, leads the audience in an emu dance, 26 January 1992.

Sunshine High to turn TAFE

By
**CAROLINE
OVERINGTON**

THE site of the former Sunshine High School in Ballarat Rd will be used as a Technical and Further Education (TAFE) college from June.

It will be part of the Western Metropolitan College of TAFE which was formed last year by an amalgamation between the Footscray and Newport TAFE colleges.

The new Sunshine site is tipped to become the Western Metropolitan College's headquarters by the year 2000, taking over from the Footscray campus. It will eventually have about 3000 students.

Some smaller TAFE centres in the western suburbs are expected to close as the new Sunshine campus expands.

A multi-million dollar building will be constructed on the Sunshine site and old classrooms will be re-ramped.

Lessons will start in June, when space for about 350 students becomes available.

TAFE will soon cater to about 40,000 students in the western suburbs.

A spokesperson for the Western Metropolitan College of TAFE, Mr Michael Hall, said the Sunshine High School buildings would be refurbished and some older buildings would be removed.

"There will also be some major construction works on the site - a multi-million dollar project," Mr Hall said.

He said a decision had not yet been made on whether the Sunshine campus would become the college's headquarters.

He said the college had put in a submission to develop a campus on the Laverton Air Force Base when that site was vacated.

The development of the Sunshine campus will open new educational doors to local students and create jobs in teaching, con-

struction and administration.

"There is massive demand for TAFE courses in the west," Mr Hall said.

"We cannot presently meet the needs of students in the area."

He said some courses at the Footscray campus this year had attracted 700 inquiries from students. One course drew 300 applications for only

20 places.

"These figures are tragic, especially in Sunshine where there is little else for young people to do," Mr Hall said.

He said unemployment among Sunshine youth was about 45 per cent, leaving few with the option of taking on full-time work if refused a place at TAFE or university.

TAFE courses are

presently offered from: Champion Rd, Newport; the Williamstown Post Office; Berry St, Hyde St and Nicholson St, Footscray; Morris St, Sunshine and Hoppers Lane, Hoppers Crossing.

Mr Hall said some of the smaller campuses of TAFE might be closed as Sunshine expanded.

Rosamond pioneer

A FOUNDING member of the Rosamond Bowling Club, Mr Ernest Norton, died on 12 January at the Heidelberg Repatriation Hospital.

Mr Norton, of Maribyrnong, was a committee member when the club was formed in 1955. He was club president from 1973 to 1975, secretary for 19 years and a delegate to the RVBA also for 19 years.

**MICHAEL'S
FURNITURE**

This week's competition is for a \$100 gift voucher towards the purchase of any item of furniture from Michael's Furniture, on the corner of Barkly St and Geelong Rd, Footscray. To be in the running for this week's prize, simply call the telephone number located below and speak your name, address and telephone number slowly and clearly after you hear the tone. The winners of last week's competition — 10 double passes to see the movie "Spotswood" at Hoyts Cinema, at the Highpoint City Shopping Centre — were: Loraine Woodman of Altona, Susan Carroll of Hoppers Crossing, Kay Stevens of Melton South, Pera Woodyard of Sunbury, Nichole Flavor of Melton, Sussanah Ivandar of Footscray, Leanne Dowling of Werribee, Tess Kirby of Newport, Janet Simmon of West Footscray and Karen Sachelles of Laverton.

PH: 005513280

GIVEAWAY LINE



Maximum call charge +24c/20.6 secs A.A.A. premium



Honored

DR Peter Dunn of Maidstone was named an Officer of the Order of Australia in the Australia Day honors list, for services to international relations.

Other locals honored included Senior Fire-fighter Peter Conrad Adamson of West Footscray, Warrant Officer Eric Charles Hayward of Altona and Warrant Officer Michael William Jackson of Werribee.

Blackout day

ILBIJERRI-Talagan. It means "coming together for a ceremony" and that's just what local Aboriginal people did, at Pipemakers Park, in Van Ness Av, Maribyrnong, on Sunday.

Black artists staged a corroboree and concert on the banks of the Maribyrnong, featuring Aboriginal musicians and poets for three hours from 1pm.

The event was to mark "Black-

out Australia Day," a national day of mourning for Aborigines.

AMONG the dancers at Sunday's gathering on the banks of the Maribyrnong was Burnie Riley, of the Tjapukai Corroboree Troupe, from Kuranda, Far North Queensland. The troupe presented the fish dance to the delight of an appreciative audience. Picture: ADAM ELWOOD.

LEGAL ACTION AND ADVICE

FAMILY LAW and DE FACTO RELATIONSHIPS

We offer specialist advice in all matters involving separation.

• Divorce • Custody

• Access • Property Settlements

Speak to our accredited Family Law Specialist Ernest Woolf

PHONE 689 8933

Cohen Woolf & Weinberg Pty

(formerly Di Natale & Twigg)

Barristers and Solicitors

1st FLOOR, 215 BARKLY STREET, FOOTSCRAY

also at 613 ST KILDA RD, MELBOURNE PH: 521 2244

Radio slots green lesson

THE Melbourne Living Museum of the West, in Maribyrnong, has received two \$2500 grants from the Department of Conservation and Environment.

The money will be used:

- To produce programs about conservation and the environment with themes and projects relevant to the west of Melbourne, and for information sheets to accompany the radio programs, translated into community languages; and
- To promote environmental education for people with physical and intellectual disabilities.

The projects should begin in April.

Museum project officer Mr Mark Dawkins said the grant was less than the museum had requested.

"We are happy with the amount because we realise times are tough. Both the projects will have to be reduced — although hopefully each will stimulate some interest within the community," he said.

Mr Dawkins said the radio programs would



● As project officer at the Melbourne Living Museum of the West, Mr Mark Dawkins will talk-back radio programs on conservation and environment issues at 3WRB.

have talk-back and would run once a week for half an hour.

A spokesman for the second project, Mr Gary Vines, said that no one had previously given much thought to disabled people, conservation and the environment.

"A trained local social worker, Mrs Helen Laffin, will be working with people with disabilities to

identify whether these programs are adaptable to the disabled," Mr Vines said.

The Maribyrnong group was one of 69 community-based groups in Victoria to receive \$255,700 through the Department of Conservation and Environment's community grants program.

Radio Active

The Museum continues to produce its weekly radio program on community radio station 3WRBfm, though it is no longer on Friday mornings but Wednesdays from noon to 2pm.

This move was necessitated by changes that the current station management committee made to their programming policy. It is a measure of the value of the Living Museum Show and the Community Health Hour to the station that every effort was made by station management to accommodate these programs in an alternative spot (the Community Health Hour is heard at 2 to 3 pm). The change in times also provided us with the opportunity of negotiating a program for the Victoria University of Technology which commences on 21st of April. It will be called *Perspectives* and will be heard from 3 pm to 4pm every Wednesday.

The Living Museum Show continues to have as its aims the promotion of the region and its culture and to provide opportunities for the community to access its local media both within the program and in other ways (e.g. the V.U.T. program). In the slightly more than two years of the show we have featured over 400 local people, as well as numerous others from the wider community, and 200 local groups. In recent programs we have sought particularly to feature the local communities of South East Asian and Latin American origin. In the case of the former of these two communities this has led to us putting together a team and an application for a Vietnamese Program which has received favourable consideration from station management, although a broadcast date awaits the completion of training by the team. The Museum no longer participates directly in the management of the station though the above illustrates, we believe, that we continue to promote community access to the station.

As in 1991, outreach and community involvement have continued to be the basis of our involvement in radio. Melbourne's Living Museum of the West has been a catalyst for encouraging and training new participants. Mark Dawkins is very willing to assist others who may wish to make use of community radio facilities.

Disabled learn of the environment's beauty

By
BRENDA MARSHALL

OUR daily sensations are usually accepted by us as too ordinary to notice.

One person working with people with disabilities thinks we should not take all that we experience for granted.

Helen Lassin knows that some people do not find it easy to get to know the environment and need extra assistance to experience the outdoors as others might.

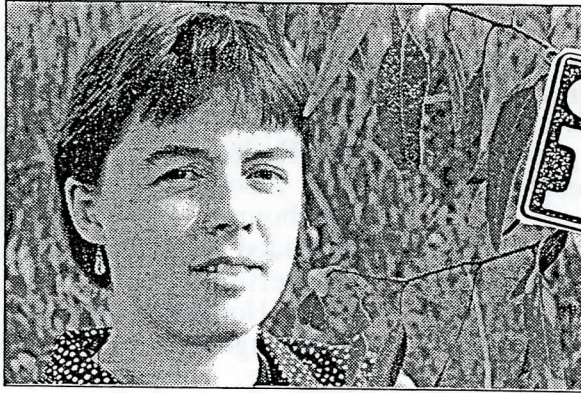
Environmental education is one of the answers to the difficulties disabled people experience.

The Living Museum of the West at Pipemakers Park, Maribyrnong is employing Ms Lassin to conduct a study of the services available to people with intellectual and physical disabilities in the north west.

She will be looking at available programs and conducting a survey of disability agencies to see what environmental programs they use.

She will also look at the type and frequency of these educational opportunities where they exist.

Ms Lassin said she will be examining access to parks in the region and will be organising a one-day pilot study for a small group of disabled people.



Helen Lassin is trying a unique experiment at Pipemakers Park, Maribyrnong — she is experimenting with teaching environmental awareness to the disabled.

"Hopefully this will act as an impetus for other groups in the community to get inspired," she said.

Her final report will be published and distributed to all relevant environment education and disability organisations.

How can people with disabilities learn to relate to the environment?

"They can participate in a variety of ways," Ms Lassin said.

"There is decision making and taking responsibility for their actions as well as simply experiencing the outdoors in a way that focuses on tactile, aural and visual experiences."

Ms Lassin will be working with different aspects of Pipemakers

Park in her studies—a wonderful environment for everyone to attend to.

A nature trail is being planned and will give people with disabilities an accessible outdoor experience of this great river location.

The project is being supported by the

Northern District Spastic Society's Leisure Services, Melbourne Water and the Victorian Association for Environmental Education.

If you have any information or contacts that would help Ms Lassin in her work phone 318 3544.

COMMUNITY NEWS



Environmental education for the disabled project

In 1992 the Museum began a project to investigate what environmental education opportunities exist for people with intellectual and physical disabilities. Helen Lassin has been working as project officer (part-time) and has undertaken a survey of disability agencies in the North and Western region of Melbourne and their current use of environmental education services. She has also visited environmental education services and parks, to find out the type and frequency of their programs for people with disabilities and to assess their accessibility for people with disabilities. There is a scarcity of research in this area, so this project is breaking new ground in focussing attention on these issues and in recommending practical measures.

A key event in the project was the 'pilot day' at Pipemakers Park. The participants were from the Brunswick Special Developmental School, the Northern Suburbs District Spastic Centre and the Royal Victorian Institute for the Blind.

They joined in a number of environmental education sessions, including composting, a nature walk and things to see, touch, hear and discover in a session called 'Passage of Time'. Feedback after the sessions showed that people with different disabilities do find the environment interesting and are very enthusiastic to be involved in activities. There was a need for adaptations of the programs offered and for increased awareness of the specific needs of those with particular disabilities. The gravel paths in Pipemakers Park were difficult for those pushing wheelchairs, but there was great interest in the development of the nature trail and in the sights and sounds of the wetlands in the park.

Helen's report on the project is now complete and will be launched at a seminar in August 1993, focussing on environmental education opportunities for the disabled. The report summarises the findings of the survey and evaluates the Pilot Day. A video tape of the Pilot Day is also planned. The Steering Committee for the project has included representatives of people with disabilities, including John Richardson in his wheelchair. Funding for the various components of the whole project has come from the Department of Sport and Recreation, the Victorian Environment Education Council and the Department of Conservation and Natural Resources.

Koorie Gardening Team

The Koorie Gardening Apprentice Scheme started one year ago because Aboriginal people recognised the need for Koorie involvement in the study and propagation of native plants and in response to the dearth of Koorie people with horticultural trade qualifications.

The Victorian Aboriginal Education Association Incorporated, the State Training Board, Department of Labour, the Department of Employment, Education and Training and the Victorian Education Foundation came together with Western Region Group Training Ltd., Melbourne's Living Museum of the West and Melbourne Water with a proposal to employ and train twelve Koorie apprentices in the metropolitan area.

Currently, six are employed by Western Region Group Training, with Melbourne's Living Museum of the West as host employer; four are employed by Melbourne Water and one each at Western Metropolitan College of TAFE and the Aborigines Advancement League. The group of twelve attend Northern Metropolitan College of TAFE for off-the-job training one day per week. All have completed the first year of on-the-job training.

Melbourne's Living Museum of the West received funding for the co-ordinator's position and other project expenses from the Victorian Education Foundation. Melbourne Water provided facilities, including a compound area with caravan, portable office and wash-up area and the lease of a vehicle. Other items of equipment, including mowing and general maintenance equipment have been supplied by Melbourne Water in return for work done in Pipemakers Park.

Western Region Group Training have supplied protective clothing, some office equipment, administrative and general support to the program. In addition to subsidising apprentices' wages, the Department of Employment, Education & Training provides funds for extra tutoring for the team.

Off-the-job training

The apprentices' training follows a slightly modified curriculum, developed in conjunction with the teachers and all employers and includes an increased emphasis on indigenous plants. Apprentices have been very supportive of each other at school.

On-the-job training

On-the-job training is undertaken in a variety of locations across Melbourne and has included work with the following:- the councils of Sunshine, Melton, Williamstown and Keilor, Worawa College, Healesville, and the Aborigines Advancement League. Melbourne Parks and Waterways have provided work and training for the team at Westerfolds Park, Petty's Orchard, Point Cook, Horseshoe Bend and Pipemakers Park. The range of activities undertaken includes pruning, propagation, drainage work, landscaping, revegetation, park maintenance and use of a wide array of equipment and machinery.

The team was responsible for constructing an indoor wetland display for the launch of the 'Frogwatch' project by the Department of Conservation & Natural Resources. The team played an integral role in the organisation and delivery of the 'Nutbroki Ilbijerri' concert staged by the Living Museum of the West.

Work with local councils will continue, including work with Keilor Council on the Taylors Creek restoration project and the Rosehill Park re-development.

Projects at Pipemakers Park

Project grants from Open Space 2000 have enabled the team to plant out the north entrance to the park and to commence work on a nature trail around the park. The trail will display indigenous plants, particularly those of significance to Koorie people. Consultation with disabled groups has also contributed to the trail design. Stage 2 of the nature trail, dependant on further funding from the Open Space 2000, will include boardwalks giving access to the wetlands area. The team will also be heavily involved over the next six months in the Landcare Environment and Action program providing expertise in landscaping and gardening activities.

Project outcomes

The first twelve months of work and training have been highly successful, with the Koorie Gardening Team receiving high commendation for its work, particularly from the Superintendents of Parks & Gardens meetings. Attendance and individual performance has been excellent and the group has shown willingness and diligence in all works undertaken. The team has been an integral and highly valued part of Melbourne's Living Museum of the West.

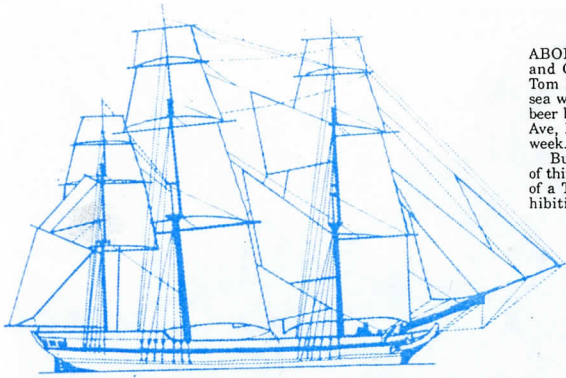


The Koorie Gardening Team at work, Pipemakers Park, 1992



Koorie Gardening Team, 1992 (left to right):- Brett Barnett, Matthew Gristwood, Darren Witzand, Matthew James, Jeff Wlash (co-ordinator), Robert Drayton, Darren Braybon.

Tom Roper all at sea



ABORIGINAL Affairs and Gaming Minister Tom Roper was all at sea with a 100 year-old beer bottle in Van Ness Ave, Maribyrnong last week.

But all in the spirit of things, at the launch of a Time and Tide exhibition of submerged

archeological heritage at Melbourne's Living Museum of the West, Pipemakers Park.

The Minister said the exhibition allowed viewers to "dive" onto the wreck of the barque *William Salthouse* and look at other seafaring exhibits.

"Visitors can feel the shifting currents, immerse their feet in the undersea, all without getting their feet damp

on the *William Salthouse*," Mr Roper said.

The *William Salthouse* lies in protected

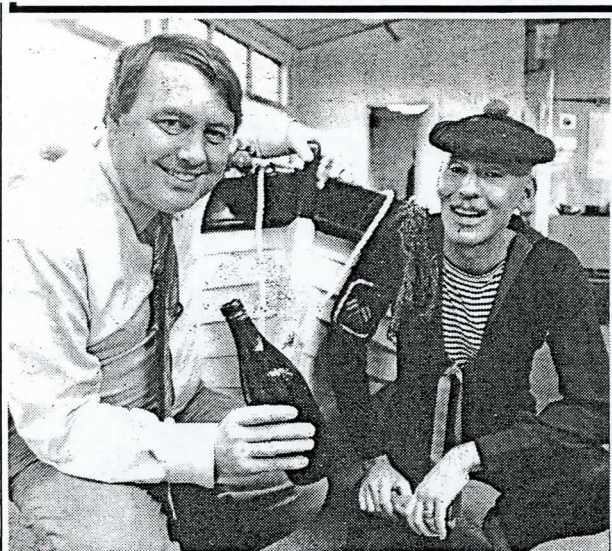
water off Queenscliff. It sank after striking a submerged reef at the entrance to Port Phillip Bay in 1941.

Time and Tide

The Living Museum hosted the Victoria Archaeological Survey's touring exhibition 'Time and Tide: a celebration of Victoria's submerged archaeological heritage', at our Visitor Centre, over three months in 1992. The Hon. Tom Roper opened the exhibition, which provided community access to a very fine presentation of archaeological artefacts, audio-visuals, soundscape, graphics and an opportunity to gain some insight into a little-understood area of expertise. It also raised awareness of the complex issues associated with preserving our submerged archaeological heritage and was popular with children



State Minister Tom Roper and bosun Iain Stuart hold a vintage beer bottle in a whale boat at the Melbourne's Living Museum of the West exhibition in Maribyrnong. Photo: Eric Waterman.



● Tom Roper celebrates the opening of the exhibition with sailor Tim McKew.

Sailing into the seas of the past

VICTORIA'S first exhibition of maritime archaeology will be on display at the Living Museum of the West in Maribyrnong until July 26.

Time and Tide was put together by the Victorian Archaeological Survey, a

group which preserves and manages the state's heritage, including Aboriginal artifacts, post-European land sites and maritime sites.

The exhibition marks the 150th anniversary of the sinking of the British trading vessel *William Salthouse* while trying to

enter Port Phillip Bay after sailing from Canada.

Visitors are able to take a simulated "dive" on the wreck by pressing their face into a mounted diving mask and experiencing the sights and sounds of the underwater world — without getting their feet wet.

The exhibition also comprises two galleries, videos, sound tracks, photos and artifacts.

One of the galleries focuses on the death of ships and their rebirth through archaeology. Here visitors can discover what causes ships to sink and see treasure of the deep.

Real life shipwreck experience

By MAX WILSON

A UNIQUE Time and Tide travelling marine exhibition has taken up residence at Melbourne's Pipemakers Park, Maribyrnong.

The exhibition allows visitors to "dive" on the historic wreck of the barque, *William Salthouse*, feel the shifting of the currents, immerse in the undersea wonders, and all without getting your feet wet.

Centre-piece of the exhibition is a wall of underwater goggles all focused on a continuous video of professional divers working on the wreck of the barque. Because the screen is surrounded in darkness and the goggles cut out peripheral vision, there is a definite impression of actually diving on the wreck. This impression is intensified by a marching audio of escaping scuba bubbles and the noise of waves overhead.

The exhibition simulates land-based and aquatic environments in which marine archaeologists work.

It comprises two galleries, one focusing on how time exerts its power over the wrecks and the other provides and insight into the methods of exploration and preservation used by marine archaeologists.

The Living Museum's Project Co-ordinator, Mr Peter Hatfield, said the marine museum was one of the most exciting to visit the western suburbs and had already drawn a great deal

of attention from schools across the area.

The *William Salthouse*, which lies in protected waters off Queenscliff, struck a submerged reef at the entrance to Port Phillip Bay on 28 November, 1941, after setting sail from Montreal, Canada. It is only one of up to 120 ships that, between 1835 and 1950, were lost within 10 nautical miles of The Heads.

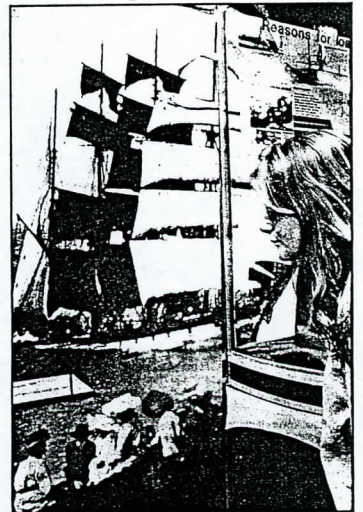
"It is rather ironic that many of the early sailing ships brought barrels of goods to Australia and not far from the site of the Living Museum, here on the Maribyrnong River, was where some of Australia's first exports headed for the Mother country," Mr Hatfield said.

Built in Liverpool in 1841, the *William Salthouse* is the best preserved wooden sailing vessel in Victorian waters and its cargo contains the only Australian collection of mid-nineteenth century provision barrels.

Apart from the realistic video of divers on the wreck, other items to catch the imagination are silver spoons, a bottle of desert wine, children's ceramic toys and crew implements.

The exhibition is being mounted by The Victorian Archaeological Survey and will remain in the western suburbs until 26 July when it will move to the Museum of Victoria.

Pipemakers Park is on Van Ness Ave, Maribyrnong and is open from 10 am to 4 pm, Monday to Thursday and from 11 am to 5 pm on Saturday and Sunday. The park is not open on Friday.



WORK experience student, Natacha Stenkovic, studies one of the static displays that help make up the maritime exhibition. Picture: JOHN EDWARDS.

WESTERN INDEPENDENT - Tuesday, 12th May, 1992 - 17

The Mail

Keilor
Messenger

A LEADER NEWSPAPER GROUP PUBLICATION

TUESDAY, MAY 12, 1992

Networking

Networking in and beyond the region is an important aspect of the Museum's activities. This has ranged from co-operating with the Department of Conservation and Environment in the launch of the 'Frogwatch' program. The Museum's Aboriginal Project officer played a major role in the launch, telling the dreamtime story of Tiddilic, the frog and assisting local Koorie children in their acting-out of the story.

Regular participation in the Arts Management Advisory Group has been through Peter Haffenden, who is a founding member of the group. Both Peter and Olwen gave papers at AMAG sessions during 1992. AMAG is a flourishing group, enabling arts organisations to face current issues relating to management and financial planning.

The Museum is a member of the Museums Association of Australia and was pleased to host a meeting of the Women's Section of the MAA in April 1992. The Museum sent representatives to the annual conference of the Council of Australian Museum Associations held in Melbourne.

Links with historical societies continue. The Living Museum is working on a report that documents the work of local historical societies and has appreciated their co-operation in recording their activities. This has been funded by the Department of Planning and will be a useful guide to the extensive work that historical societies undertake.

Environs

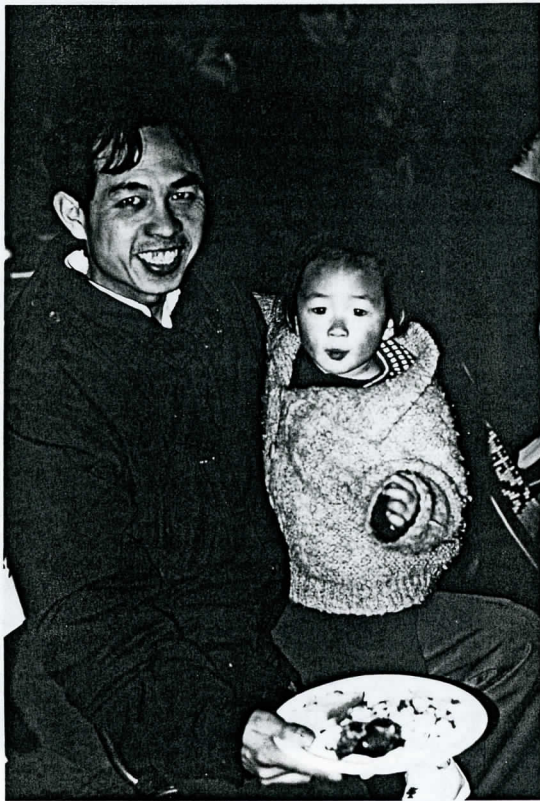
Ignore frogs at your peril!



ABORIGINAL dancer Robert Mate Mate sees eye to eye with a froggy friend during last week's Frogwatch launch at Pipemakers Park in Maribyrnong.



Members of the Women's Section of the Museums Association conducting their branch meeting at the Living Museum Visitor Centre.



Local Vietnamese man eating his first plate of kangaroo cooked traditional style

Nutbroki Ilbijerri

Nutbroki Ilbijerri in the language of the local Melbourne tribe, the Wurundjeri, means a ceremony or party in the west. The Living Museum ran a large concert for the Aboriginal community to celebrate NAIDOC week in July. NAIDOC stands for National Aboriginal & Islander Day Organising Committee.

The concert featured a range of acts including Lionel Rose, Archie Roach and Ruby Hunter, traditional dancing, poetry, playing on the gumleaf by Herbie Patten, children's pantomime and so on. There was also kangaroo baked in traditional style over burning logs.

One very important feature of this concert was the outreach by the Museum and the Aboriginal organisers of the concert to the local ethnic communities. The western region has a particularly high percentage of ethnic groups. The main groups were identified and the brochures advertising the concert (as shown on the opposite page) were advertised in ten languages. *From the front: English, Greek, Serbian, Vietnamese, Spanish, Macedonian, Chinese, Croatian, Italian & Arabic.*

The result was a very mixed audience, a very interesting and happy event and a very real cultural exchange. It was amazing.

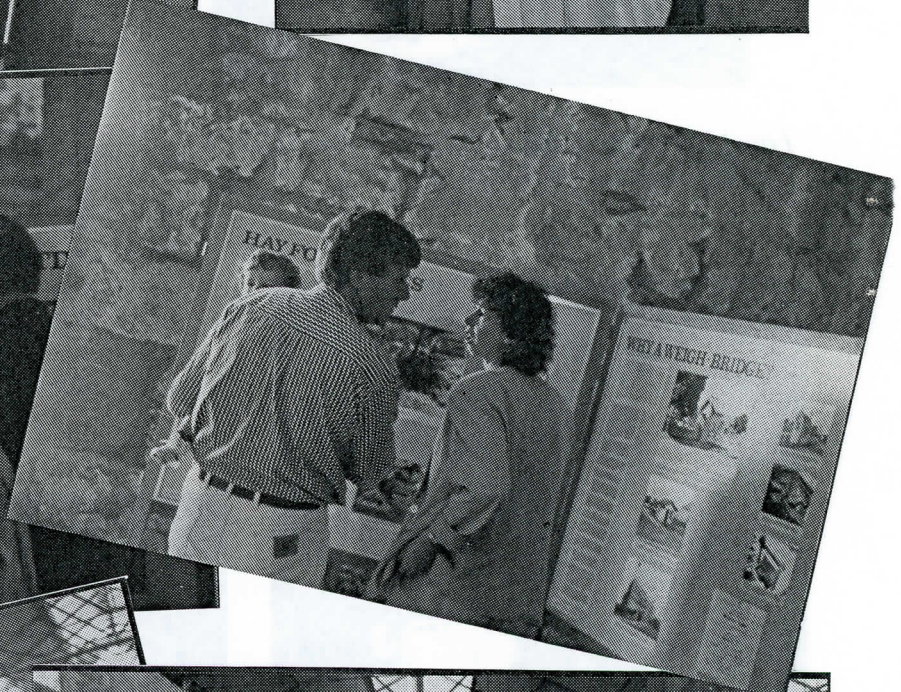
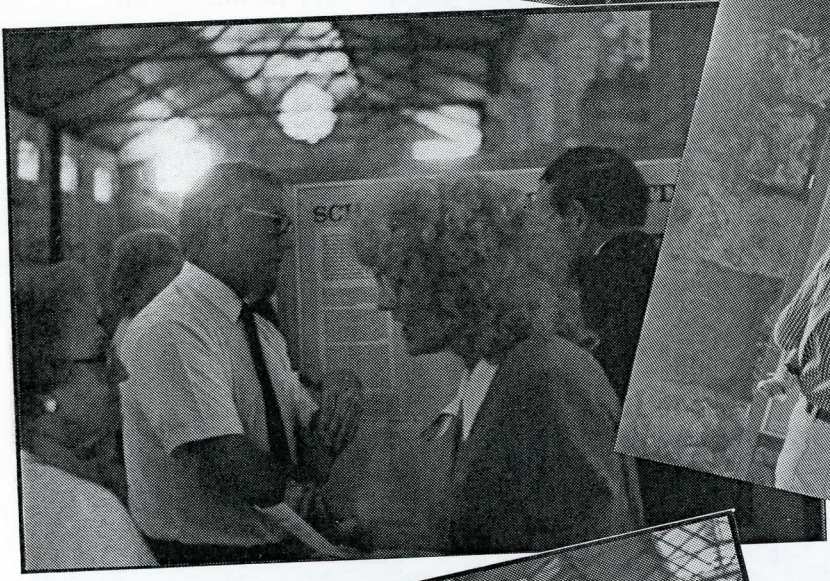
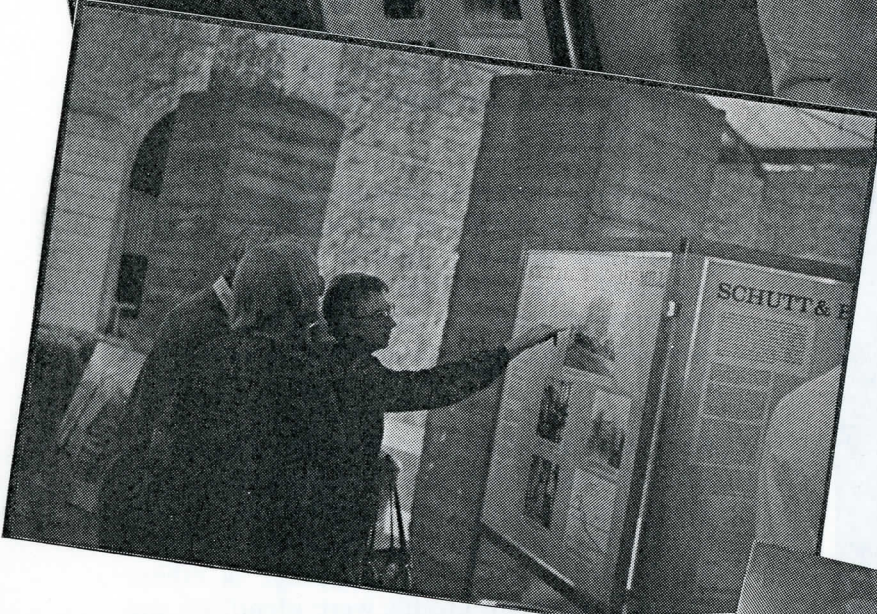
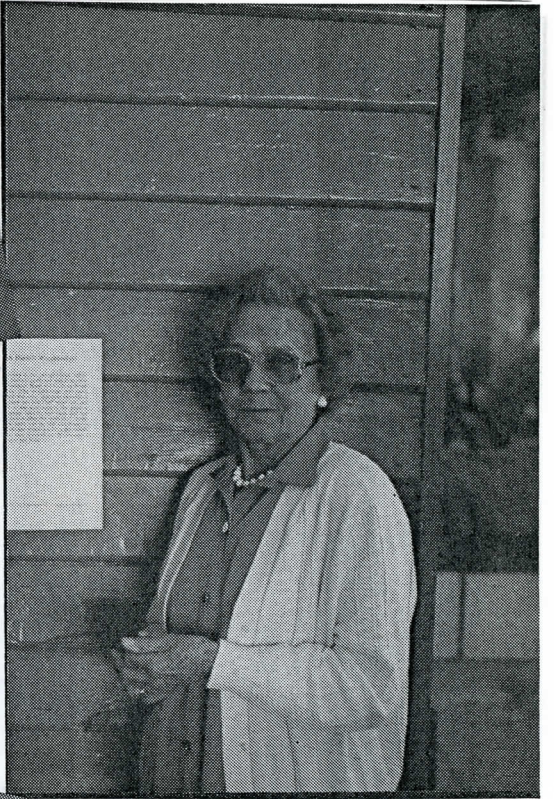


Local Maori family who blessed us for providing an opportunity for them to meet the local Aboriginal community,



One of the many children at the concert mesmerised by the events on stage

Schutt and Barrie exhibition launch
December 1992



Community Exhibitions

Most of our exhibitions in 1992 came through co-operation with other organisations and groups. The mounting, launching and promotion of these exhibitions has been a special form of community involvement.

Schutt & Barrie

A major exhibition for the year was staged in the large bluestone building in Pipemakers Park. This was on the theme of the hay and chaff-mills of Melbourne's West and had as its focus the Schutt & Barrie Weighbridge office, which the museum rescued and restored following its removal from the site on Geelong Road West Footscray, some years ago. The project was funded by a grant from the Helen M. Schutt Trust and involved the preparation of six display panels, and the collection and preparation of a number of artefacts. In this we had the assistance of Melbourne Water, Maribyrnong Valley Metropolitan Park, who loaned a platform scale, Scienceworks, who loaned a chaff-cutter, and the Sunshine & District Historical Society, who loaned several farming implements. The two Sunshine Harvesters currently stored by the Museum were also incorporated into the display. Representatives of local farming families and chaff-mill families took part in a gathering to launch the exhibition over morning tea.

Kensington Women's Oral History

Some time ago, the Living Museum assisted the Kensington Women's Oral History Project with general support and loan of equipment. The resulting travelling exhibition of oral history collected by Debbie Breen and photographs by Ponch Hawkes, appeared at the Visitor Centre during 1992.

'Munupi Dreaming'

The Essendon branch of Community Aid Abroad proposed the Living Museum's centre as a local venue for the exhibition 'Munupi Dreaming' by Aboriginal women artists in the Northern Territory. This fine exhibition had previously been in the City. Museum staff assisted Essendon CAA supporters in setting up the exhibition and Sharon Mowwett from Queensland opened the exhibition. 250 visitors attended and the proceeds totalled \$2000. Some of this money went to the Yikikini Arts Centre and the rest went to CAA for work in partnership with Aboriginal communities.

Sunshine displays

The Sunshine & District Historical Society provided a temporary display on Sunshine and its industries, especially the Sunshine Harvester Works. The Society has also added to the display of artefacts relating to the Sunshine Harvester, at present on view in the main bluestone building.

Lynch's Bridge displays

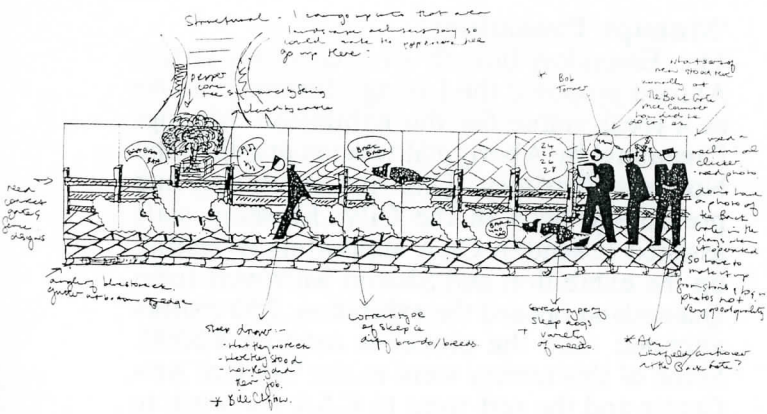
The Museum has had links with the Newmarket Saleyards community over nine years. As part of our on-going contact, Elizabeth McKinnon prepared a display for a re-union of Newmarket Saleyards workers in February 1992. The Museum's video *Under the Peppercorns* was part of this display. At the request of the State Library, Elizabeth produced a special display for the launching of their publication, *At the Fall of the Hammer*, by Keith Vincent. These displays are now on view in the Visitor Centre at Pipemakers Park.



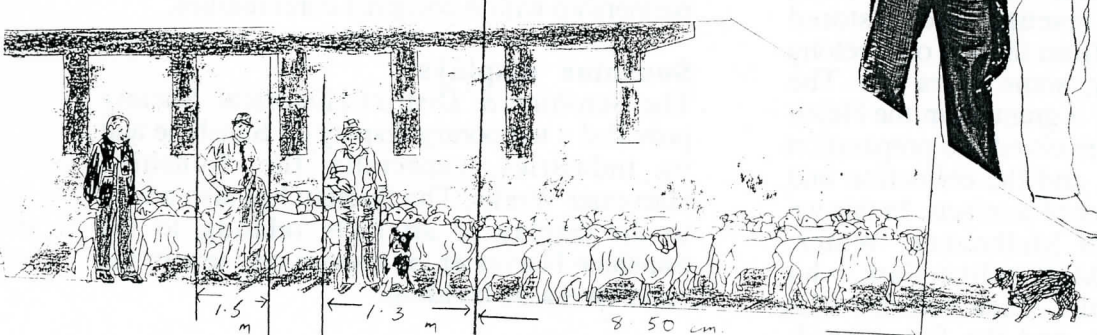
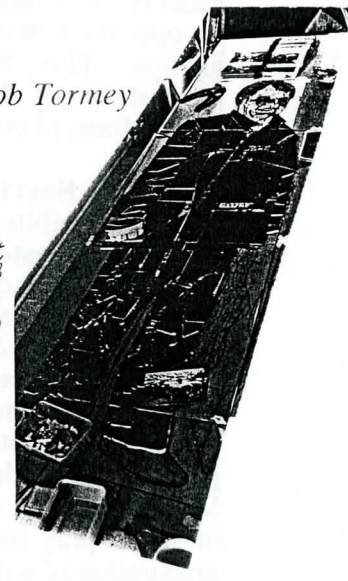
Vera Ferretti, has owned her own drapery shop in Macaulay Road for 22 years
Photo by Ponch Hawkes from the Kensington Women's Oral History Exhibition.

Working Drawings by Elizabeth McKinnon for the complex task of creating the Epsom Road Underpass mosaic.

NORTH WEST WALL.

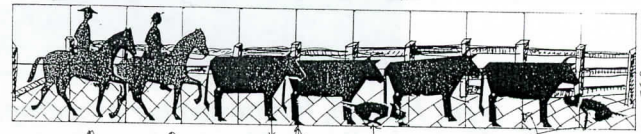
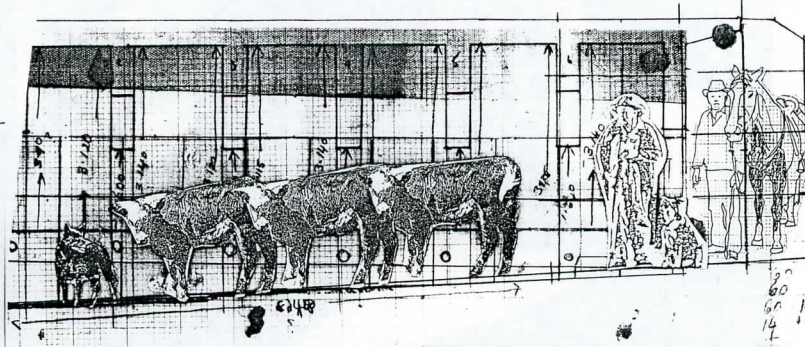
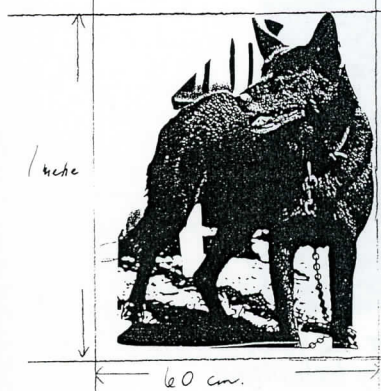
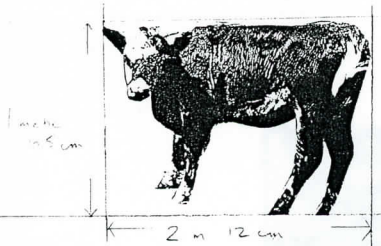
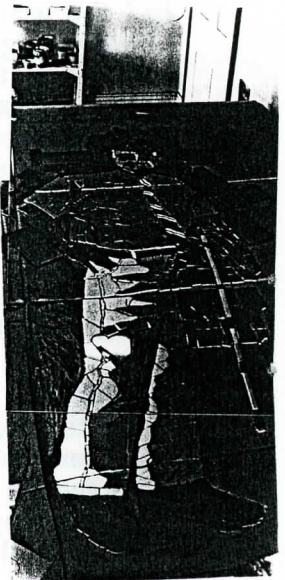
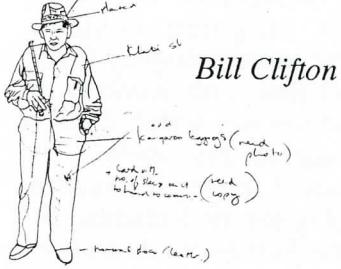


Bob Tormey



There are 10 sections in this area & they are repeated images so can be one metre lengths, as many as you want.

DRIVER



Lynch's Bridge/Epsom Road Underpass wall mosaic project

The Epsom Road Underpass wall mosaic project is one of the outcomes of the Living Museum's involvement in the collecting and interpreting of 'living history' over nine years.

Following the completion and successful installation of the Newmarket Saleyards History Trail panels in 1991, Libby McKinnon who has completed two large outdoor wall mosaic projects, was asked to come up with designs for a mural for the Epsom Road Underpass which was a lost area of barren concrete creating a dark, negative and unattractive pathway. This area of the Yards was called 'The Back Gate', as described on the History Trail panel nearby. It was at gates here that the cattle or sheep were counted by the Melbourne City Council employees before they left the Yards.

The figures in the wall mosaic are portraits of men who had worked at the Newmarket Saleyards and who also assisted with the History Panel Project. Libby took photos of the men and their dogs for the mosaic portraits or used copies of newspaper photographs. Major Projects Unit have funded the project.

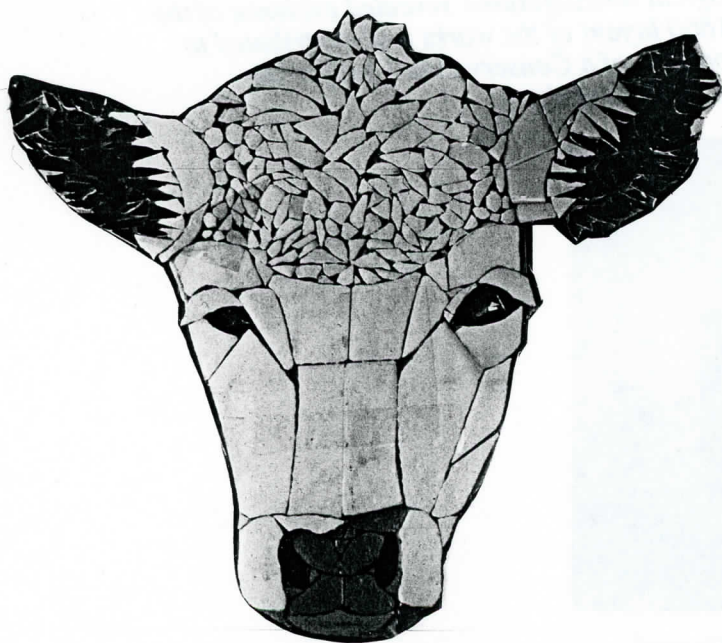


Kintore Moy; Bill Clifton's Sheepdog, a winner of many sheep dog trials.

Community Involvement

Libby was based at the Kensington Community High School for the duration of this project, and was able to develop a process by which both the school and the local community became involved in mosaic production workshops.

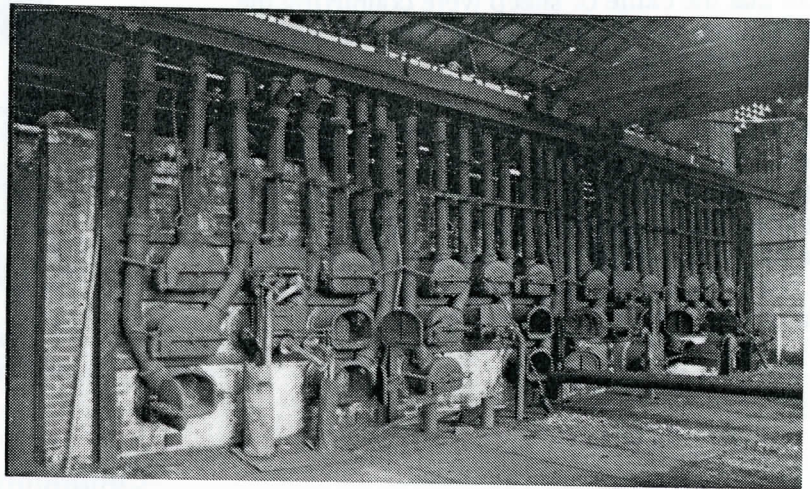
The Area Improvement Program of the Department of Planning and Housing in July 1992, provided funding to involve the new community now living at Lynch's Bridge, in the history of the site of the former Saleyards, and local residents in Flemington and Kensington. Flemington Community Centre Arts Officer, Carol Volpe, promoted the community mosaic workshops to various ethnic communities familiar with the Centre and five of the panels were completed there. Another four were completed at Kensington Community High School and three completed in Libby's current studio by a variety of groups in Pipemakers Park. The launch date for all three sections of the wall mosaic will be in late 1993.



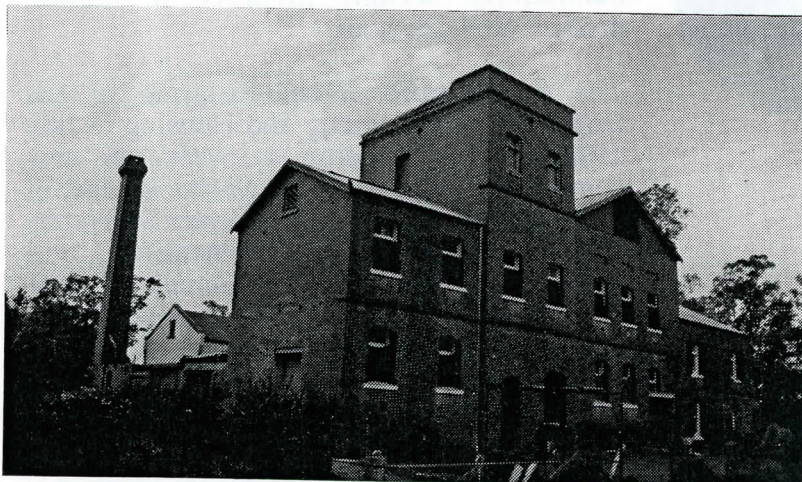
Mosaic Cow, based on a photo from Jim Matthews property near Diggers Rest.



The 1914 transit sheds on Princes Pier reflecting the hey-day of sea travel and the post war immigration boom. Identified as a significant structure in the Bayside Heritage Study.



Horizontal retort settings at the Bendigo Gasworks. Archaeological investigations revealed evidence of the original 1860 layout of the works and contributed to the development of a Conservation Plan for the nationally significant site.



Euroa butter factory. The Historic Buildings Council commissioned study of factories north of the city has provided a valuable context for making a comparative analysis of the industrial heritage of the state.

Consultancies

The Museum's consultancy arm has been very productive in the last 12 months. It has extended the scope of the museum's research work into new geographic and thematic areas. The industrial archaeological investigations have broken new ground, literally, by demonstrating the validity of archaeological excavation in the research and assessment of historic industrial sites.

The principal industrial archaeological work has been carried out in conjunction with several consultancy projects.

Bendigo Gasworks This is the last surviving coal fired gasworks in Victoria and probably in Australia, demonstrating an obsolete technological process of the 19th century. Archaeological investigation established the extent of alterations to the works and evidence of earlier demolished buildings.

Bayside Heritage Study Here the archaeological investigation has identified the significant industrial relics associated with the Port Melbourne Piers, and the potential for buried remains from several 19th and early 20th century maritime facilities such as the Torpedo Depot, fishermen's huts, sea baths, and the remnants of the original railway pier, first constructed as part of the Hobson's Bay Railway in the 1850s.

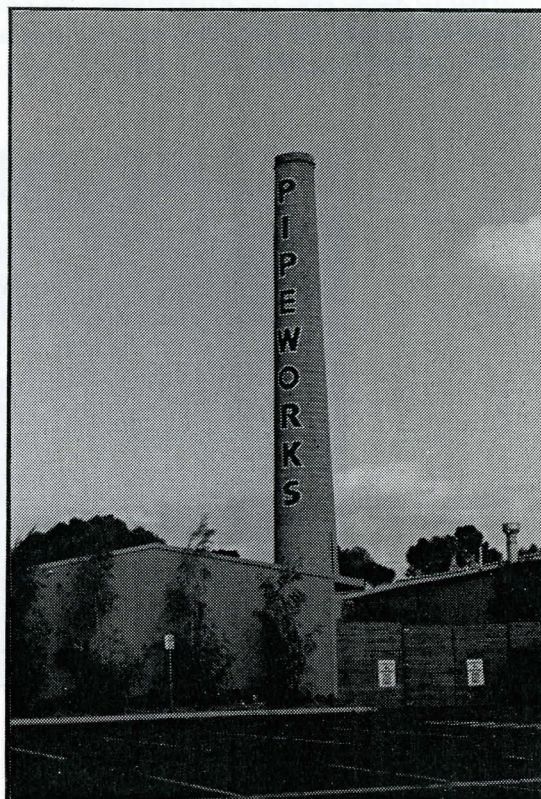
Swallow & Ariell following the closure of the Arnotts biscuit factory after nearly 150 years of continuous operation, an archaeological survey was conducted at the factory buildings which date, in part, back to the 1850s. This identified the survival of buildings which demonstrate several distinct baking technologies from the small batch operation of the mid 19th century, through large coal fired rotating ovens, to the continuous band plants of the early 20th century. The study was part of a larger heritage assessment for the owners and involved submissions to the Historic Buildings Council on the extent of the historical significance of the site.

New Works Lakes Entrance a conservation analysis of the remains of the engineering works and workers cottages associated with the construction of the artificial shipping channel. Archaeological

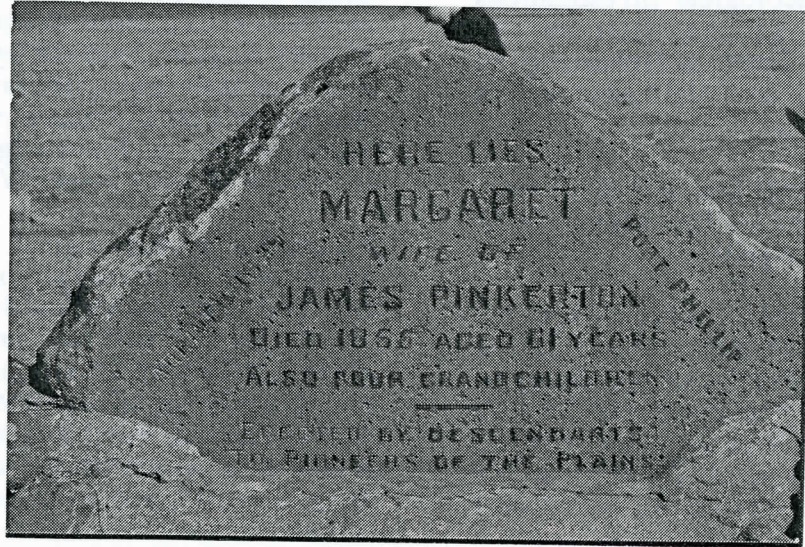
investigation has so far revealed relics such as 1870s steam cranes and winches, tramways for moving rock to the piers, and sites of blacksmith shops, stables and other workshops.

Archaeological consultancies have also been undertaken for future developments in the Western Region. Two surveys of Aboriginal sites were undertaken, one north of Werribee, and another near Sydenham, which both add a little more to our knowledge of Aboriginal occupation of Melbourne's West.

An unusual archaeological project was the relocation of the Pinkerton pioneer memorial cairn and graves in Melton South. The graves of Margaret Pinkerton and four of her grandchildren were located in an area intended for an extension of the Melton Sewerage Scheme recycled water irrigation scheme. The project involved recording and dismantling the cairn, locating and excavating the graves which date from the mid to late 1850s, and reconstruction of the cairn over a new grave site just 200 metres away. The Melton Council is undertaking landscaping and interpretation of the site to ensure its long term maintenance.



Pipeworks, Campbellfield is a former concrete pipe factory, now converted to a market and entertainment centre. The site was identified in the Northern Suburbs Factory Study .



The relocation of the pioneer graves of Margaret Pinkerton and four of her grandchildren was carried out as part of a community project. Members of the Melton Historical Society, family descendants and local school students, took part, as well as the Living Museum Archaeologist, who was employed to supervise the excavation and relocation of the graves and cairn to a new site. This was an unusual activity for the Museum and a rare event in Victorian archaeology since excavation of burials is usually confined to prehistoric sites.



Another form of consultancy has involved Living Museum Staff designing and mounting exhibitions for commercial clients .



Display produced by Melbourne's Living Museum of the West for APC's Open Day, 1992. Elizabeth McKinnon (MLMW) on the left and Maureen Short (APC) on the right.



Display produced by Melbourne's Living Museum of the West for ICI's Open Day, 1992. Rob Weaver, Personnel Manager, on the right.

Resource Centre

Inquiries

The Living Museum's Resource Centre has continued to provide a valuable community service to private, commercial and education users. Hundreds of research and general enquiries were dealt with during the year. While reduced demand was experienced from Australian Studies students due to changes in the core curriculum of the VCE, this was balanced by an increase in more broad-based demand from secondary schools in areas including environmental studies, planning and local history.

There has also been an increased use among tertiary students in the fields of heritage conservation, social history, and resource management. In particular, students were looking for information of management plans for public parks, such as Pipemakers. By far the largest category of inquiries, however, came from individuals who were interested in finding out about the history of their local area or work place, tracing family histories and connections, or just sharing their own stories or talking about aspects of the region depicted in our displays and publications.

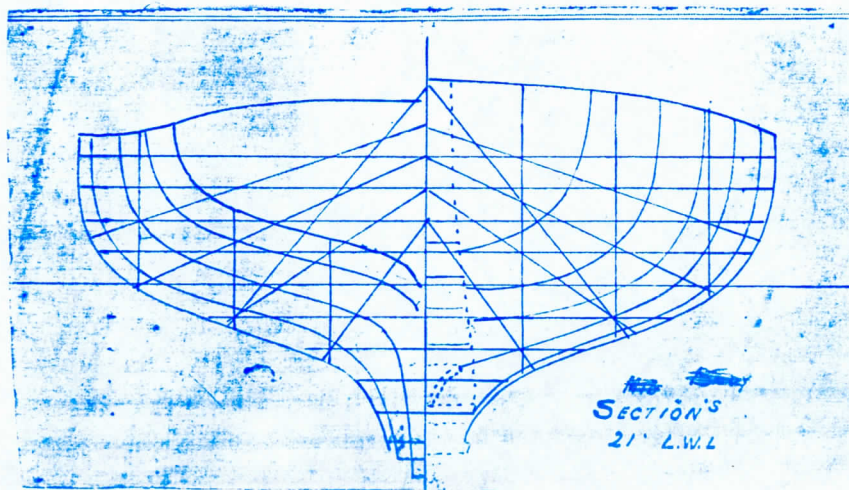
Loans

While the Resource Centre is not primarily a lending library, many requests were made for loans of material including books, audio and video tapes, photographic material and even whole exhibitions. Borrowers included educational institutions such as the Keilor Historical Society, the State Library and the

VUT which used photographs from our collection for displays; Government bodies such as the Department of Manufacturing which used historical material on industries in the region for the preparation of planning submissions and private industry such as Allom Lovell & Associates, requiring information on historic industrial sites.

Acquisitions

More offers of artifacts, documents and other material were made to the Museum than were appropriate for us to collect. However, by falling back on the Museum's acquisition policy we were able to establish just what was desirable to add to our collection. A major acquisition is a large collection of plans, photographs and boat building tools from John Jones, whose establishment operated on the Maribyrnong River, first at Footscray and then Ascot Vale since the late 19th century. Community activity is represented by material from the Crow Collection and the Kensington Estate Gardening Group. Earlier projects attracted donations of memoirs and photographs of the Newmarket Saleyards and also photographs as well as artifacts connected with the chaffmilling industries. The Sunshine and District Historical Society has loaned tools and machinery connected with rural industry and the Sunshine Harvester Works. Discussion were begun with both ICI and the Maribyrnong Explosives Factories, regarding the future of historical artifacts from the factories, as these important western suburbs industries are being closed down and dismantled.

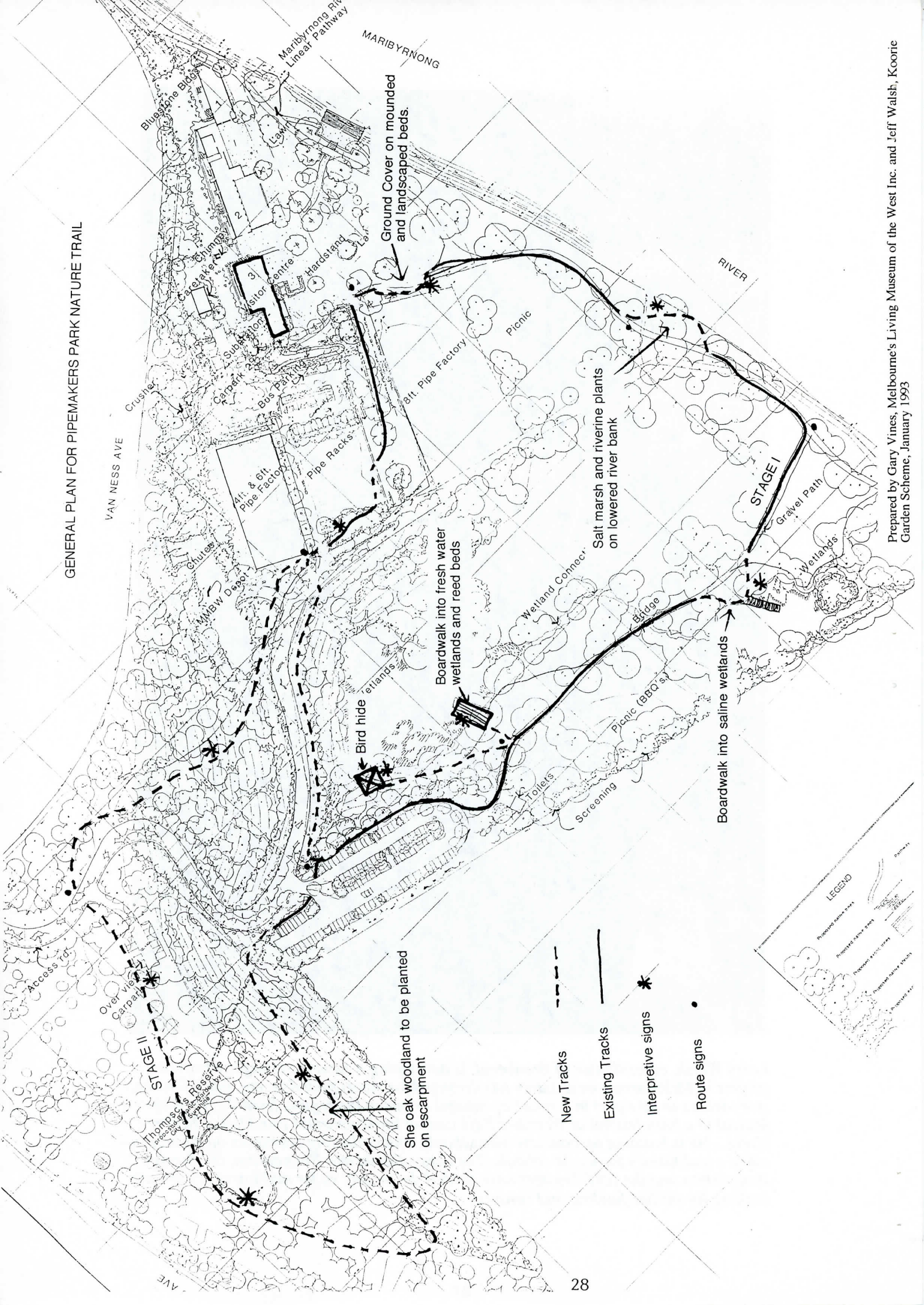


Construction drawings for a 21 foot clinker hull, designed and built by John B. Jones, Maribyrnong River boat builder. Mr. Jones' tools and plans, were donated to the Museum by his daughter-in-law for use in displays.



Larry Walsh, co-ordinator of Brenbeeal, is developing a Koorie heritage networking project in Melbourne's west. Larry has arranged for Aboriginal dancers, musicians and story-tellers to take part in a range of cultural events in the region, from the Vietnames Tet festival to a bush festival at Werribee Park and an Environmental Fun Day at Kororoit Creek.. He is building up contacts with schools, and collecting resources on Aboriginal culture and history for use in schools. The Lance Reichstein Foundation, the Stegley Foundation and the ANZ Trustees have funded the project so far and Larry is currently looking for further funding and resources.

GENERAL PLAN FOR PIPEMAKERS PARK NATURE TRAIL



Ground cover on mounded and landscaped beds.

Boardwalk into fresh water wetlands and reed beds

Salt marsh and riverine plants on lowered river bank

Boardwalk into saline wetlands

She oak woodland to be planted on escarpment

- New Tracks
- Existing Tracks
- * Interpretive signs
- Route signs

LEGEND

- Proposed Area 1 - Park
- Proposed Area 2 - Park
- Proposed Area 3 - Park
- Proposed Area 4 - Park
- Proposed Area 5 - Park

Nature Trail

The Living Museum staff have had a long term commitment to interpreting the natural environment. Efforts to do this in Pipemakers Park go back to the original planning sessions with Melbourne Water. Now, thanks to the role of the Koorie Garden Team, and assistance from Open Space 2000, the Victorian Environmental Education Council, and Brimbank Park, we are under way in constructing a nature trail in the park. This will be used to interpret the distinct environments of Melbourne's Western Region, including the she-oak forests and basalt plains grasslands which once dominated the area and the wetlands and riverine environments interspersed among these grasslands and woodlands.

The nature trail will be designed to ensure access for the disabled by incorporating a sensory trail and accommodating wheelchair and disabled access. It will also include components of Aboriginal food plants. Living Museum staff are liaising with Sunshine Council which will be creating an indigenous botanical garden in Thompson Reserve, adjacent to Pipemakers Park. This will offer opportunities to expand the nature trail up and onto the basalt escarpment.

History of the Land Discovery Trail

As part of its work of interpreting Pipemakers Park and the region, the Living Museum applied for grants to undertake a project on the Bottom Factory concrete slab in the park. As a result, the Museum received \$10,000 funding from the Community Environment Art & Design program of the Australia Council, to design the History of the Land Discovery Trail. This is a project that Libby

McKinnon and Jeff Walsh, co-ordinator of the Koorie Garden Team in Pipemakers Park, will work on together, incorporating gardens and mosaic paths in a cultural context, ranging from Aboriginal, colonial and migrant themes to a garden of the future. All Museum staff will participate in varying degrees in this project, which will also have extensive community involvement and a substantial training component for young people.

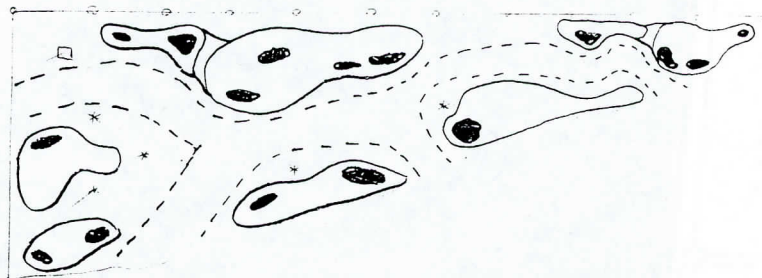
Bringing it together

The Museum's role in Pipemakers park is progressively evolving thanks to the greater public awareness of our presence here, and our involvement in new park developments such as the Nature Trail and History of the Land projects, as well as on-going planning for future uses of the historic industrial buildings on the site.

The over-riding objective of this process is to provide an appropriate vehicle for the interpretive activities of the Museum, and in fact create a microcosm of the region's history, culture and environment through a range of perceptual interfaces employing both traditional and innovative interpretive schemes.

The message conveyed during the park and museum visit is therefore a dynamic interactive experience between the visitor, the museum personnel, and the park and museum installations.

This multi-faceted and dynamic process provides a range of experiences which give a more holistic 'feel' for the heritage and culture of the west, departing from the traditional intellectualizing techniques of presenting artefacts and information separate from their living context.



The Koorie Garden Team's first design for landscaping of stage 1 of the nature trail.

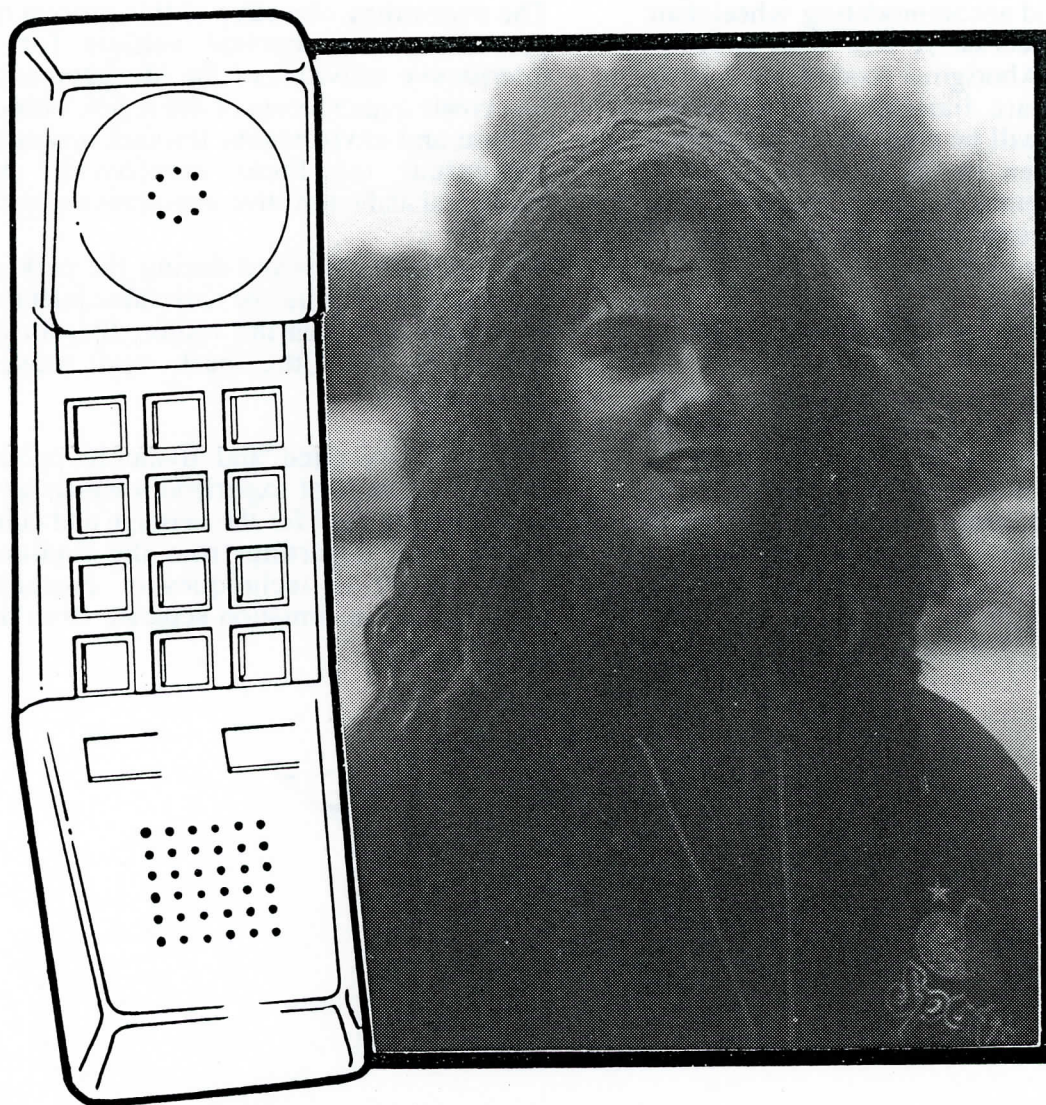
Educational activities

One of the first educational events of 1992 was a seminar at our Visitor Centre, organised by University of the Third Age (Footscray branch), on the theme of 'Rural Industry'. Visiting groups have included students from Keilor Heights Secondary College, Broadmeadows Secondary College (4 groups), Maribyrnong Secondary College, Deer Park Secondary College, Buckley Park Secondary College, Kings Park Primary School, Deer Park Primary School, St. John's College, Braybrook, Ascot Vale Special School, Jamieson Park Secondary College, St. Columba's College, Essendon, Salesian College, Sunbury, Sacred Heart, College, Kyneton, Adass Israel School, Elsternwick.

Older groups have included Geelong Historical Society, Glen Waverley Probus, Doncaster &

Templestowe Historical Society, Catholic Archives Association, St John's Friendship Club, Essendon, Dyson Speciality Tours (a group from Camberwell), Waverley Retirement Activities group, Boronia Legacy Widows, Wheelers Hill Retirement Village, A.R.P.A. Walkers Group, the Wolseley Car Club, and a walking group from Frankston. We have conducted sessions for hundreds of students from the V.U.T, R.M.I.T., Deakin University and the University of Melbourne (Institute of Education). A number of teachers' in-service sessions and network meetings were held at Pipemakers Park.

Museum staff have given talks to groups at Sunshine, Melton, and Highpoint libraries, to Probus groups at Keilor and Werribee, to church groups at Sunshine and Pascoe Vale and to YWCA groups in the city and eastern suburbs.



Kylie Feeman has been working with the Living Museum as our trainee secretary since September 1992. Her position and training are funded by DEET and she attends a course in Business Studies at the V.U.T. two days a week. Kylie has taken on a range of tasks in the Museum, including word-processing, reception duties, filing, kiosk orders, and organising a massive mail-out to schools.

Promotions and Publicity

WESTOUR is a new regional organisation, based at the Western Region Commission and bringing together tourism activities in Melbourne's western region. Its main achievement in 1992 was to produce a brochure outlining some of the tourist attractions in the region. The Living Museum contributed to this brochure and our Visitor Centre is one of the distribution points for the brochure.

Desk Top publishing

We received a grant from Sunshine City Council towards purchase of desk-top publishing equipment, including an Apple McIntosh and a personal laser writer. This is proving extremely valuable in our work of preparing a number of books for publication. Thank you Sunshine Council.

Museum Staff 1992

Mark Dawkins - Project Officer
Olwen Ford - Museum Director
Kylie Freeman - Trainee Secretary
Helen Laffin - Project Officer
Peter Haffenden - Finance Manager
Elizabeth McKinnon - Artist/Consultant
Gary Vines - Curator & Archaeologist
Jeff Walsh - Co-ordinator, Koorie Gardening Team
Larry Walsh - Brenbeal Co-ordinator
Judy Xenophou - Finance Officer

Koorie Gardening Team

Brett Barnett
Darren Braybon
Robert Drayton
Matthew Gristwood
Matthew James
Darren Witzand

Farewells

We especially thank our President, Irene Wescott, who is retiring as president, after four years in that office. Irene has been a firm and courageous president, who has guided the museum through a crucial stage in its development. We have appreciated her practical and generous contribution. Thank you Irene.

We hope you will continue to be involved in the activities of the Museum.

Three of our members passed on during the past year: Doris Wright, who worked at the Ammunition Factory, Footscray and was generous in sharing her memories of her working life there; Frances Smith of Footscray, the region's first woman bank manager, who loved history and shared her research with others; Ted Smith of Essendon, who passed on his knowledge of the Maribyrnong River in days gone by. We pay tribute to these fine people who have served the community so well.

Thanks

The Museum's thanks go to the staff of Melbourne Parks & Waterways for their support and co-operation in 1992, to the Western Region Commission for use of their facilities, to **Arts Victoria** for our core funding in 1992, to the following bodies who have provided funding for projects:-

Australia Council
Department of Planning & Development
Department of Sport & Recreation
Department of Conservation & Natural Resources
Helen M. Schutt Trust
Lance Reichstein Foundation
The Stegley Foundation
ANZ Trustees
Victorian Environmental Education Council
Victorian Major Projects Unit
Open Space 2000
Western Region Group Training Ltd.
Victorian Education Foundation
W. L. Allen Foundry
Ministry for Ethnic Municipal and Community Affairs.
Sunshine City Council

We thank those who have invited us to take on consultancies, our members and Committee of Management, and our supporters across the region.

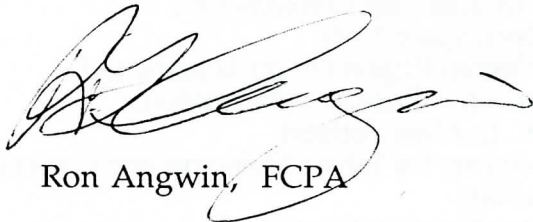
It is obviously not possible to describe all the many and varied activities of Melbourne's Living Museum of the West, during 1992. Once again our multi-disciplinary team has spread themselves over a vast range of activities and styles of work ranging from traditional displays of artefacts in cases to innovative community-oriented project combining Aboriginal and oral history, archaeology, art and landscape design.

6 Tenterden Street
Spotswood Vic 3020

AUDITOR'S REPORT

To the Members of
Melbourne's Living Museum
of the West Incorporated

I have examined the books of account and in my opinion the accompanying statements (i.e) balance sheet and profit loss statements have been constructed so as to give a true and fair view of the financial position of the Living Museum as at the 31st December 1992.



Ron Angwin, FCPA

19 April 1993

MELBOURNES LIVING MUSEUM OF THE WEST INC

BALANCE SHEET AS AT 31/12/92

	\$	\$	\$
<u>Current Assets</u>			
Cash at Bank - General	7,661.25		
- Savings A/C	<u>3,503.43</u>		
		11,164.68	
Change Float		100.00	
Debtors - Publications	3,016.50		
- Consultancy	<u>22,431.71</u>	25,448.21	
Stock - Publications	23,449.00		
- Work in Progress	<u>41,274.00</u>	64,723.00	
<u>Investments</u>			
Term Deposit		--	
<u>Fixed Assets</u>			
Cost	37,141.00		
Provision for Dep'n	<u>32,391.00</u>		
WDV as at 31/12/92		<u>4,750.00</u>	
TOTAL ASSETS			<u>106,185.89</u>
<u>Current Liabilities</u>			
Creditors		4,580.53	
<u>Accruals/Provisions</u>			
Prov'n for Project funds unexpended	41,274.00		
Provision for Annual Leave	11,537.09		
Provision for stock adjustment	<u>12,121.21</u>	64,932.30	
<u>Long Term Liabilities</u>			
Loan - School Community Trust			
- Principle	6,200.00		
- Interest Accrued	<u>808.36</u>	<u>7,008.36</u>	
			<u>76,521.19</u>
NET ASSETS			<u>29,664.47</u>
<u>Trust Funds</u>			
Balance as at 31/12/91 (ADJ)		40,151.00	
Deficit (As per Consolidated Statement)		<u>(10,486.30)</u>	
TOTAL TRUST FUNDS			<u>29,664.47</u>

CONTINGENT LIABILITY - \$24,523.94

For Salaries owing subject to legal interpretation and will be incorporated in the accounts as and when required.

MELBOURNES LIVING MUSEUM OF THE WEST INC
CONSOLIDATED INCOME AND EXPENDITURE STATEMENT

For Year Ended 31 December 1992

	\$	\$
<u>Income</u>		
Core Operation	100,916.93	
Projects	52,067.10	
Consultancies	<u>65,938.01</u>	
		218,922.04
 <u>Expenditure</u>		
Core Operation	127,543.00	
Projects	49,141.10	
Consultancies	<u>49,798.24</u>	
		226,482.34
Deficit		7,560.30
Add Transfer to Projects work in progress		<u>2,926.00</u>
TOTAL DEFICIT ON OPERATIONS		<u>10,486.30</u>

MELBOURNES LIVING MUSEUM OF THE WEST INC

STATEMENT OF INCOME AND EXPENDITURE

For Year Ended 31 December 1992

CORE OPERATIONS

	\$	\$
<u>Income</u>		
Membership	1,210.00	
Donations	3,566.90	
Sales - Publications	6,566.82	
- Seminars	2,450.00	
Grant	83,000.00	
Kiosk	<u>769.00</u>	97,562.72
Interest Bank	412.26	
Term Deposit	<u>2,941.95</u>	<u>3,354.21</u>
TOTAL CORE INCOME		100,916.93
<u>Expenditure</u>		
Accounting/Audit Fees	3,480.00	
Advertising/Promotions	47.00	
Bank Charges	726.65	
Increase in Annual Leave Prev'n	3,652.09	
Insurance - General	847.50	
- Workcare	1,002.50	
Interest	650.00	
Kiosk Expenses	2,026.56	
Photocopying	3,646.81	
Photographic Services	3,460.91	
Postage	1,033.80	
Publications	580.30	
Salaries	85,106.92	
- Back Pay	6,846.06	
Security	448.50	
Registrations/Subscriptions	1,082.00	
Sundry Expenses	575.80	
Stationery	1,767.94	
Superannuation - 3%	(52.38)	
Depreciation	1,282.00	
Telephone	2,682.46	
Travelling	1,259.91	
Power/Light	350.84	
Exhibition Materials	1,872.62	
Staff Amenities	633.00	
Legal Fees	909.80	
Gas	548.54	
Photographic Materials	579.87	
Refreshments/Entertainment	265.00	
Seminars	<u>230.00</u>	
TOTAL CORE EXPENSES		<u>127,543.00</u>
DEFICIT		26,626.07

MELBOURNES LIVING MUSEUM OF THE WEST INC

STATEMENT OF INCOME AND EXPENDITURE

For Year Ended 31 December 1992

PROJECTS

	\$	\$
<u>Income</u>		52,067.10
<u>Expenditure</u>		
Fees - Consultants	7,307.13	
Hire of Equipment	15.00	
Insurance - Workcare	330.08	
Repairs	224.00	
Photographic Services	1,095.66	
Printing	477.50	
Salaries	28,441.91	
Stationery	111.86	
Travelling	1,401.57	
Photo Material	514.08	
Exhibition Materials	5,670.01	
Concert Expenses	3,453.05	
Postage	19.35	
Sundry Expenses	<u>79.90</u>	<u>49,141.10</u>
SURPLUS		<u>2,926.00</u>

AIMS & OBJECTIVES

The purposes for which Melbourne's Living Museum of the West Incorporated is established are:-

1. To establish a permanent ecomuseum within the context of Melbourne's Western Region, a concept whereby the total community, its environment and its heritage are considered as part of the Museum, focussing the main emphasis on the people of the region rather than on artefacts, and operating from one or more fixed bases throughout the region.
2. To develop a greater understanding of the history and culture of Aboriginal and non-Aboriginal peoples and the environment of Melbourne's Western Region.
3. To record and present the history of working people in Melbourne's Western Region, up to the present day.
4. To involve the people of the region in the collection, research and presentation of this history,
5. To use a wide range of presentation methods, including exhibitions, video, publications, theatre, public events, and other participatory activities.
6. To be a multi-cultural museum.
7. To create a mobile museum service for Melbourne's Western Region.
8. To relate the historic sites and structures of the region to the story of the people of the region.
9. To develop a Heritage Resource Centre for the region.
10. To undertake linking and bridging activities with other groups, projects and institutions in the Western Region.
11. To act as a catalyst to development of ecomuseum activity in Australia.
12. To develop and promote community museum activity which is interactive and innovative.
13. To develop the techniques of presenting exhibitions and related activities as effective communication devices.
14. To undertake pilot projects in a number of areas within the ecomuseum context on an experimental basis.

MISSION STATEMENT 1991

Melbourne's Living Museum of the West is a community museum which actively involves the people of Melbourne's west and others in documenting, preserving and interpreting the richness and depth of the region's social, industrial and environmental history.



