

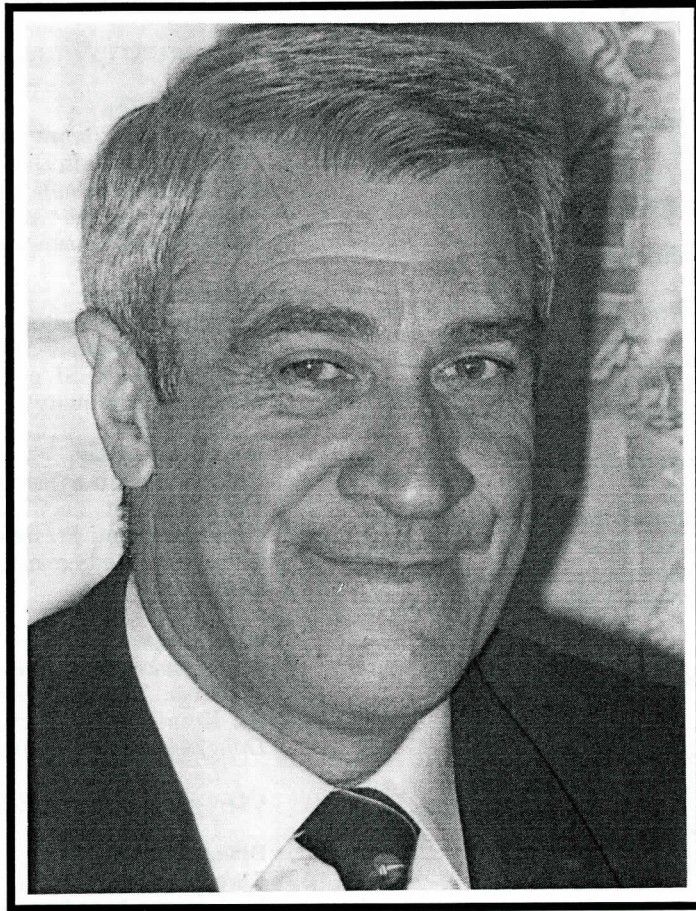
**MELBOURNE'S
LIVING MUSEUM
OF
THE WEST
INCORPORATED**



ANNUAL REPORT

1993

PRESIDENT'S MESSAGE



I present for your consideration the annual report of Melbourne's Living Museum of the West.

This year's annual general meeting marks the tenth year of the Museum's operation. The past decade has passed very quickly, it seems only yesterday a group of interested people assembled to discuss and subsequently establish Australia's first and only ecomuseum.

Much has been achieved since those early years when the Museum was first established in shared facilities with the Western Region Commission in a house in Footscray owned by FIT, forerunner to VUT.

Over the past ten years the Museum has blossomed into a vibrant repository of the West's living history. In the attainment of this goal we are indebted to support given by Arts Victoria, Local Government, VUT and the community of Melbourne's West.

However, none of the Museum's past achievements could have been achieved without the dedicated support of the Museum's staff under the capable leadership of Olwen Ford, nor for

that matter without the assistance and co-operation of Melbourne's Parks and Waterways the Managers of Pipemaker's Park, home of the Museum.

Over the next twelve months the Museum must face the challenge of planning its future operations into the next decade and beyond. Whilst much has already been achieved in this direction, a great deal more remains to be resolved.

Such issues will inevitably revolve around the future occupancy development and ongoing management of our home in Pipemakers Park.

I am sure with the enthusiasm and commitment of the Board of Management and staff coupled with Melbourne Parks and Waterways co-operation, the Museum's future is well chartered to grow both in strength and regional significance.

Fred Maddern
President
Melbourne's Living Museum of the West
Incorporated

COMMITTEE OF MANAGEMENT OF MELBOURNE'S LIVING MUSEUM OF THE WEST 1993

PRESIDENT

Fred Maddern

Executive Director, Western Region Commission. Footscray resident. Chairman, Management Committee, Western Region Group Training Ltd. Involved in many Western Suburbs organisations.

SENIOR VICE-PRESIDENT

Peter Somerville

Owner and Cruise Director of Maribyrnong River Cruises. Footscray resident. Chairperson of WESTOUR. Founding member of Melbourne's Living Museum of the West. Award of Merit from the Royal Historical Society of Victoria

JUNIOR VICE-PRESIDENT

Marie Earle

Previously a councillor of the City of Footscray. Yarraville resident. Experienced member of many committees and organisations in Melbourne's west, including the YMCA and Yarraville Community Centre.

COUNCIL REPRESENTATIVES

Joan Bryans

(City of Altona representative)

Jointly represents Altona with husband, Tom. Altona resident. Active in the Altona Historical Society and the Western Region Group of Historical Societies. Secretary of the Ulster Society (Melbourne).

Tom Bryans

(City of Altona representative)

Worked at Commercial Polymers, Altona, until 1993. Altona resident. Active in Altona Historical Society and Western Region Group of Historical Societies. On church committees and the Ulster Society committee.

Cr. Mai Ho

City of Footscray representative)

Australia's first Vietnamese female councillor., recently elected to Footscray Council. Footscray resident. Works with the Victorian Co-operative on Children's Services for ethnic groups.

Cr. Irene Shand

(City of Sunshine representative)

Councillor of the City of Sunshine, Sunshine resident. Employed by the Australian Taxation Office. Member of the Polish community. Involved in a number of local organisations. and issues.

Cr. Peter Ross

(City of Werribee representative)

Nominated representative of the City of Werribee. Werribee resident.

DEPT. OF PLANNING REPRESENTATIVE

Helen Millicer (until April 1993)

COMMUNITY REPRESENTATIVES

Judy Gleeson

Lecturer in Communication Studies (Faculty of Arts) at the Victorian University of Technology (St. Albans campus). Brunswick resident. Currently studying for an M.A. by research. Especially interested in museum communication.

Rhonda Hallett

Lecturer at the Victorian University of Technology (Footscray campus). Footscray resident. Recently completed M.TESL degree (Monash). Involved in a ranges of community issues and organisations.

Susan Jennison

Subject Librarian (Faculty of Arts) at the Victoria University of Technology (Footscray campus). Keilor resident. President of the Keilor Historical Society. Recently completed M.A. course in Public History.

Kim Jowett

Co-ordinator of the Heathdale Community Centre, Werribee. Deer Park resident until recently, Part of the Koorie community. Launched the exhibition *Daughters of the Dreaming* at the Living Museum.

CO-OPTED MEMBERS

Brian Hubber

Rare Books Librarian, State Library of Victoria. Geelong resident. Formerly librarian at the Victoria University of Technology and involved with *WESTDOC* and *Access to the West*.

Professor John McLaren

Professor, Department of Humanities, Victoria University of Technology. Author. Carlton resident. Editor *Australian Book Review* (1978-86) and Associate Editor of *Overland* (1968-91).

Elizabeth Walsh

Director, Footscray Community Arts Centre. Involved in many arts organisations at regional and state levels. Member of advisory panels on the arts. Kensington resident. Chairperson of the Arts Victoria Festivals Panel.

ARTS VICTORIA OBSERVER

Hilary Newton

Manager, Museums Unit, Arts Victoria

STAFF REPRESENTATIVE

Gary Vines

Archaeologist and curator at the Living Museum.

EX-OFFICIO MEMBER

Olwen Ford

Museum Director, Melbourne's Living Museum of the West.

OVERVIEW

'the intricacies of involvement and outreach'

1993 provided fresh evidence that Melbourne's Living Museum of the West has the capacity to develop links with its regional and extended community in all sorts of creative ways. We were able to build on work undertaken in previous years especially in relation to Koorie projects, a major training program for young people, consultancies, environmental education opportunities for people with disabilities, links with schools in the region and beyond.

We literally moved out from our Visitor Centre into the surrounding park, taking drystone walls and plants and Dreamtime stories with us and involving a total of 35 people in our work in the park and the region, as employed staff. Most of these were receiving training. We celebrated one successful year of the work of the Koorie Gardening Team and began an unusual and innovative project - 'The History of the Land Discovery Trail' which combined Aboriginal, migrant and industrial themes and heritage, through a series of gardens and mosaics. DEET funded this project via the Landcare Environment Action Program, with the assistance of a grant from the Australia Council towards design work by artist Elizabeth McKinnon. Both training projects involved an important partnership with Western Region Group Training Ltd.

In these projects, and others, we continued to co-operate with Melnourne Water, and the newly-formed division of Melbourne Parks & Waterways. This is another partnership which is of mutual benefit, attracting many thousands of dollars to our programs and to the park, both in terms of cash for materials and in terms of labour and in-kind support from local firms.

Our programs inter-connect and over-lap. It is hard to keep clear boundaries, for example between research and community outreach. One research project was an archaeological 'dig' at Pipemakers Park, involving fifteen unemployed young people on the LEAP training scheme. We have increased links with independent researchers and educational institutions, especially through our Resource Centre. This continues to be a repository for the material generated in projects and donated to the Museum from time to time.

Radio has been another form of outreach through the Living Museum Show on 3WRB, especially in relation to environmental issues, and through the Museum's work in helping other organisations to develop their own series of radio programs

Koorie involvement has increased in 1993, notably through the *Brenbe-al* project, co-ordinated by Larry Walsh and funded by three philanthropic trusts. Larry has been in great demand, especially in the Year of Indigenous Peoples. He assisted teachers with resources, talked to thousands of students, provided contacts and generated work for Koorie artists and performers, for example at the international 'Waderbirds' performance and at the

Vietnamese *Tet* festival. A fitting conclusion to the year was Larry's paper at a national museums conference in Hobart, a paper on 'The Advantages and Disadvantages of Aboriginal Involvement in Small Museums'.

Two major exhibitions in our Visitor Centre were on Aboriginal themes - the photographic exhibition 'Daughters of a Dreaming' lent by the Museum of Victoria and an exhibition of prints by artist Sally Morgan, lent by Contemporary Visions Australia. The launches of these exhibitions were also occasions for Koorie involvement. Work began on developing an exhibition *Factories to the Future*, completed in 1994.

It has been very much a year of training. Several staff took part in providing training to the LEAP team and some staff have attended conferences or seminars inter-state. The Museum co-operated with Western Region Group Training in nominating our clerical trainee, Kylie Freeman as 'Trainee of the Year'. Kylie successfully went through to the State finals and eventually received the honour of being named 'Koorie Trainee of the Year'.

Several staff have been involved in analysis of our finances and in new forms of documentation, distinguishing between core operations, projects and consultancies. All have worked on identifying new sources of funding, and we have taken seriously the Museum's role as a small business. We gratefully acknowledge the contribution of Arts Victoria to the work of this museum through their grant towards our core operations. Taking all the Museum's operations together we have been able to quadruple that grant by attracting funds from other sources. This has included generating funds by selling our services, through consultancies and provision of training. If we added the 'invisible' contribution of wages handled outside the Museum, for people working under the auspices of the Museum, the multiplying effect is six-fold. The challenge of ensuring the Museum's continued operation has become a creative exercise, keeping a balance between the business of being a museum and the business of making money.

Our publications program has included the production of a series of four small books on *Work in the West* and a book on the Living Museum itself, *Your History Mate*, also a report by Helen Laffin, *A Breath of Fresh Air*, followed by a Nature Trail outline. The Museum initiated a program to promote our products and our services,

In widening the scope of this museum's operations, and yet adhering to its initial aims and objectives, we have broadened and deepened the concept of a museum. Our links with museum and arts workers all over Australia continue and we have received a range of inter-state visitors interested in our work.

We thank our Committee of Management, Museum members and other supporters. I especially thank Museum staff for all their hard work.

Olwen Ford
Museum Director

A VISITOR CENTRE AND A PARK

A key aspect of 1993 has been the Museum's work in integrating the Visitor Centre more fully into the surrounding park. This has been possible because of the evolving relationship with Melbourne Parks & Waterways and because of the two federally-funded training and employment schemes - the Koorie Gardening Team and the LEAP team. The work of these teams of young people in Pipemakers Park has in fact resulted from a prolonged process of research, planning, design and negotiation. In conjunction with Melbourne Parks & Waterways, the Museum has been working towards a cohesive total plan for Pipemakers Park which relates it to the surrounding region and also takes into account current and future developments. These include the demolition of the adjacent Ammunition Factory and its re-development by ADI, the potential of the Powder Magazine (or 'Jack's Magazine') as a tourist facility which complements activities at Pipemakers Park and the work of Sunshine City Council in developing an indigenous botanical garden in Thompson Reserve.

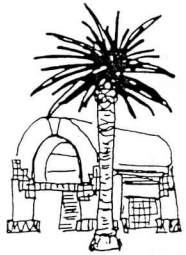
The Museum has been fortunate to have the services of a talented young landscape architect, Francine Stacey, who has produced a range of drawings, to illustrate the Museum's vision for the park. At every point, we have had discussions with Melbourne Parks & Waterways and frequent liaison with Sunshine City Council. The Museum's role in the Visitor Centre has always related to the park. The Museum still has a responsibility, under the original lease and licence from Melbourne Water, to interpret the park, the river valley and the region.

There have been increasing demands on the Visitor Centre for community use, as a venue for seminars, conferences, meetings, workshops, as well as a port-of-call for visitors from the other side of Melbourne, local residents, schools and walking groups. There is an increasing need for greater access to the space available in the large bluestone building, so that it can play a greater part in the park's interpretation and provide a large-scale facility for educational and community use. Again, the Living Museum has worked closely with Melbourne Parks & Waterways to slowly develop this building as a resource. One step forward was the provision of electricity to Building One (used as a mosaic studio for the LEAP team) and Building Two, used for occasional community events. The connection of electricity to the two buildings was a joint venture, with Melbourne Parks & Waterways and the Living Museum sharing the costs.

Representatives of the Museum's Committee of Management have had a series of meetings with Melbourne Parks & Waterways regarding a common vision and plan for Pipemakers Park, in the context of the neighbouring development. There have also been meetings with representatives of ADI and Sunshine City Council. In these times of change, there are great opportunities to develop Pipemakers Park as an attractive place for the discovery of the environment and culture of the site, the Maribyrnong valley and Melbourne's Western Region.



Visitor Centre, Pipemakers Park: Committee of Management members and Museum members, at the Annual General Meeting 1993 (Left to right) - Susan Jennison, Elizabeth McKinnon, John Argote, Peter Somerville, Elizabeth Walsh, Marie Earle, Peter Haffenden, Colin Thorpe, Olwen Ford.



HIGHPOINT WEST SHOPPING CENTRE

VAN NESS AVENUE

BLUESTONE BUILDING-STUDIO

BLUESTONE BUILDING-PERFORMANCE & EXHIBITION SPACE



WHARF

LIVING MUSEUM OF THE WEST

MARIBYRNONG RIVER

HISTORY OF THE LAND DISCOVERY TRAIL

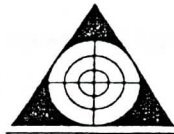
WETLANDS



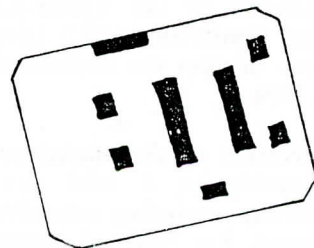
FOOTBRIDGE

MELBOURNE Parks & Waterways

NATURE TRAIL



ADI



KOORIE GARDENING TEAM

The Koorie Garden team has come a long way since it was established at the Living Museum in April 1992 and since our last annual report.

The KGT was a co-operative initiative of the Koorie Education Co-ordination Unit, the Victorian Aboriginal Education Association Inc, the Office of the State Training Board, the Department of Employment, Education and Training, Melbourne's Living Museum of the West and Melbourne Water.

Community links

The KGT has become an integral part of the Koorie Cultural Program at Melbourne's Living Museum of the West and is now auspiced by the Aborigines Advancement League.

During 1993 the group assisted in the organisation and staging of many events including: assisting with the design and construction of the Landcare and Environment Action Program in Pipemakers Park.

On-the job training

On the job training during 1992-93 has continued to be broad-based, including traditional gardening skills training and land management skills training.

The types of activities undertaken in 1993 were

- * Melton - street plantations
- * Werribee Park - annual beds
- * Keilor - botanic gardens
- * Koorringal Golf Club - turf area
- * Deer Park Aboriginal Place - weed control
- * Greening Australia - 1) construction of wetland board walk 2) workshop

Future plans

Maintenance of Melbourne Parks and Waterways headquarters
Chemcorp - landscaping
Habitat - landscaping
Ongoing work to Melbourne Water and local councils

Off the job training

The Koorie Gardening Apprenticeship Scheme has been endorsed by the Victorian Australian Vocational Certificate (AVC) Training System Task force to pilot the implementation of the AVC in 1994.

The conversion of the traditional gardening apprenticeship to a land management apprenticeship, including extensive curriculum development, has received support from the Victorian Aboriginal Education Association Inc

and the Victorian Agriculture and Horticulture Industry Training Board and is a pilot of national significance. An additional 12 apprentices are being employed under this program in 1994.

Outstanding achievements

Darren Braybon was awarded a Certificate of Achievement by Western Region Group Training as outstanding first year apprentice gardener.

Darren Braybon and Matthew Gristwood were nominated for the Young Achiever of the Year awards (Channel 10) by Northern Metropolitan College of TAFE.

Darren Braybon and Matthew Gristwood assisted in the development of a conservation Concepts training program for young people on Landcare and Environment Action Programs and delivered this training to a group of 15 young people at Melbourne's Royal Botanic Gardens.

Outcomes

Currently the KGT cannot meet the demand for its services. Its access to contract work is restricted only by lack of time and its emphasis on training outcomes from the contract work undertaken.

Given the 100% retention rates of the program, it is intended to increase the team to nine in 1994 with the addition of three young women who undertook the Landcare and Environment Actions Programs with Western Region Group Training this year. The KGT as part of the wider Koorie Gardening Apprenticeship Scheme, will become the first apprentices to be trained in land management, an expanding area of employment. In all there will be 24 apprentices by 1994, making up two full classes at Northern Metropolitan College of TAFE.

This wider scheme has maintained 100% retention rates of Koorie apprentices from Koorie apprentices from the start of off-the-job training, despite a majority of the apprentices commencing with minimal literacy and numeracy skills.

The KGT has been an outstanding success, which Group Training Australia, the ACTU and Trades Hall Council have all acknowledged as an example of 'best practice'.

The Koorie Apprenticeship Scheme now is an integral part of the Koorie Training Plan developed by VAEAI as the Industry Training Board.

Jeff Walsh



Koori Gardening Team apprentices (from left): Darren Braybon, Matthew James, Brett Barrett, Matthew Gristwood, Darren Witzand. Picture: SHARON CAVANAGH.



Kooris learn horticulture

Need a job done? Call the Koori Gardening Team

SIX Koori apprentices, based at Pipemakers Park and employed by Western Region Group Training, are undertaking specialised training in horticulture. Under the name of the Koori Gardening Team, they have worked at the Melbourne Botanical Garden.

learn the technical side of the trade, and spend four days a week putting it into practice. "We want to get to a stage where there are enough Kooris in this trade for Kooris to feel happy working in it. We hope from this program we can get Kooris to train other Kooris," Mr Walsh said. He is more than a success according to the apprentices.

knew about his own backyard garden. "I'm hearing more about native plants that I see every day. I want to learn more about that and how to tell if a plant has a disease or not," Mr Barrett said. Darren Witzand, 19, of Dandenong, who travels by train to Maribyrnong, said: "I like working outside. My last job before this one was putting in vents in shopping centres." He particularly likes to learn about Aboriginal medicines and native plants to start

"I've learnt a lot about plants and lots of different landscape techniques but I've still got a lot to learn," Mr Gristwood said. Darren Braybon, 19, moved from Queensland three years ago. He was doing a CES course in horticulture when he applied for an apprenticeship. Matthew James, 20, of Kealba, had been gardening for the Aboriginal Advancement League before he began the apprenticeship. The sixth apprentice is Robert Drayton, 27, of Broadmeadows.



The Hon. Ralph Willis, M.P., Minister for Finance, visits the Living Museum to celebrate the end of the Koorie Gardening Team's first year of apprenticeship. The gathering was held in the main bluestone building at Pipemakers Park.

HISTORY OF THE LAND DISCOVERY TRAIL PROJECT:

The aim of this project is to tell the history of the land within Pipemakers Park through a series of Discovery Trails in a derelict site known as the eight foot pipe 'Bottom Factory', once part of the Hume concrete pipe factory in Pipemakers Park.

Design was based on using and linking in with research already undertaken by the Living Museum staff to interpret the site's industrial and natural history.

This Discovery Trail design comprises five distinct environments linked by a main path. These are:

a) Aboriginal Camp, b) Shepherd's Camp, c) Colonial Garden, d) Hume Pipeworkers Garden e) Garden of the Future

The design component of this project was funded by Community, Environment, Art & Design (CEAD), a program of the Visual Arts & Crafts Board & the Community Cultural Development Unit of the Australia Council.

The development of these concepts and the drawing of preliminary design then became the basis or an application for funding under the Landcare Environment Action Program and for successful negotiations with Melbourne Water to implement the project in their Park.

The LEAP project with funds provided by DEET through WORKSTART set out to train a team of 15 young people to work on the environments within the History of the Land Discovery Trail in association with the Koori Gardening Team and Living Museum staff.

Project artist / designer Elizabeth McKinnon trained the LEAP team to design and construct and install the mosaic paths and section within the first three environments. For example, in the Aboriginal Camp area five of the LEAP team designed the Story-Telling Area mosaic mural work with Koori artists, Maree Clarke and Sonya Hodge. The mosaic is based on the 'Second Fire Myth', the local Koori story about the Seven Sisters / Pleiades. Other LEAP team members designed and produced sections of the Shepherd's Camp mosaic and the Colonial Garden mosaic.

Stage One was completed in November 1993 at the end of the LEAP team training program.

Stage Two - the Hume Pipeworkers Garden and the Garden of the Future and the remaining portion of the site, known as the Hume Pipes Archaeological area. These areas were the subject of a second application to CEAD for project design and implementation Stage Two and we were successful in obtaining this funding.

We were also successful in obtaining further LEAP funding. A new LEAP team will commence in March, 1994.

The CEAD grant for \$10,000 led to a very complex community project, combined artistic, heritage, environment and training components. The end result is not only their design, but the implementation of a substantial part of the design, with major contributions from government & private sources. The project has also demonstrated to state & federal bodies, eg. DEET and WORKSTART the importance of cultural projects in the training area. The involvement of the Koori community is basic to the whole project.

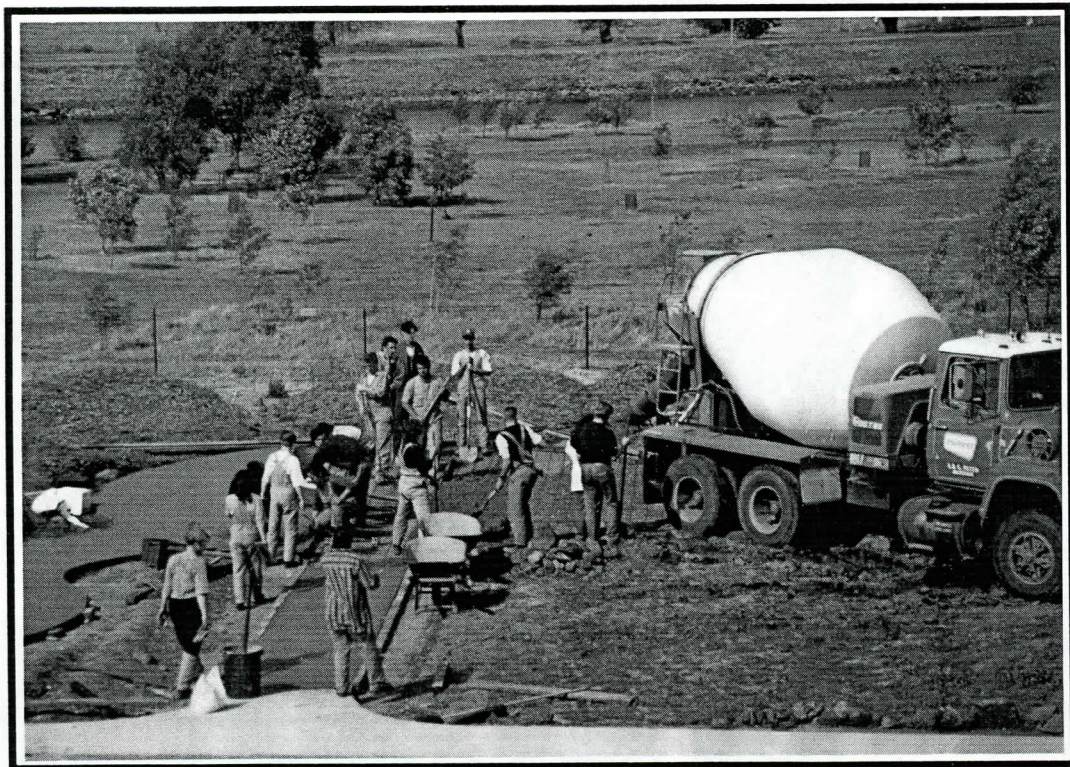
Elizabeth McKinnon



Leap team members, Kathryn, Jason and Sally landscaping the garden beds on the *History of The Land*.



Libby McKinnon and David Faber laying down mosaic panels on the 'Seven Sisters' Dreaming' section of the *History of the Land* mosaics.



The concrete pour on the *History of the Land* project with members of two LEAP teams and several other people co-operating to finish the base for mosaics.

EDUCATION PROGRAM

The Museum's education program is a very basic part of our operations. During 1993, the greatest demand from schools has been for talks and workshops on Aboriginal themes. During some weeks, Larry Walsh, co-ordinator of the Koori project, *Brenbe-al*, has been out every day to visit schools., sometimes twice in one day. He has conducted workshops for teachers, Department of Social Security personnel and tertiary students. Some schools have brought their pupils to the Museum's Visitor Centre for a session with Larry, but on the whole the sessions have been in the schools. Most of his visits have been to primary schools.

There has been a decrease in demand from secondary schools for sessions on the theme of work and this historic industrial site., This is mainly because of changes in school curriculum, for example, the end of Australian Studies as a compulsory subject. Instead, we have had an increase in requests for sessions on the environment .

The talks, tours and workshops program continues to operate on a self-funded basis with the groups paying for the sessions offered, according to a scale of charges based on the time given by Museum staff.

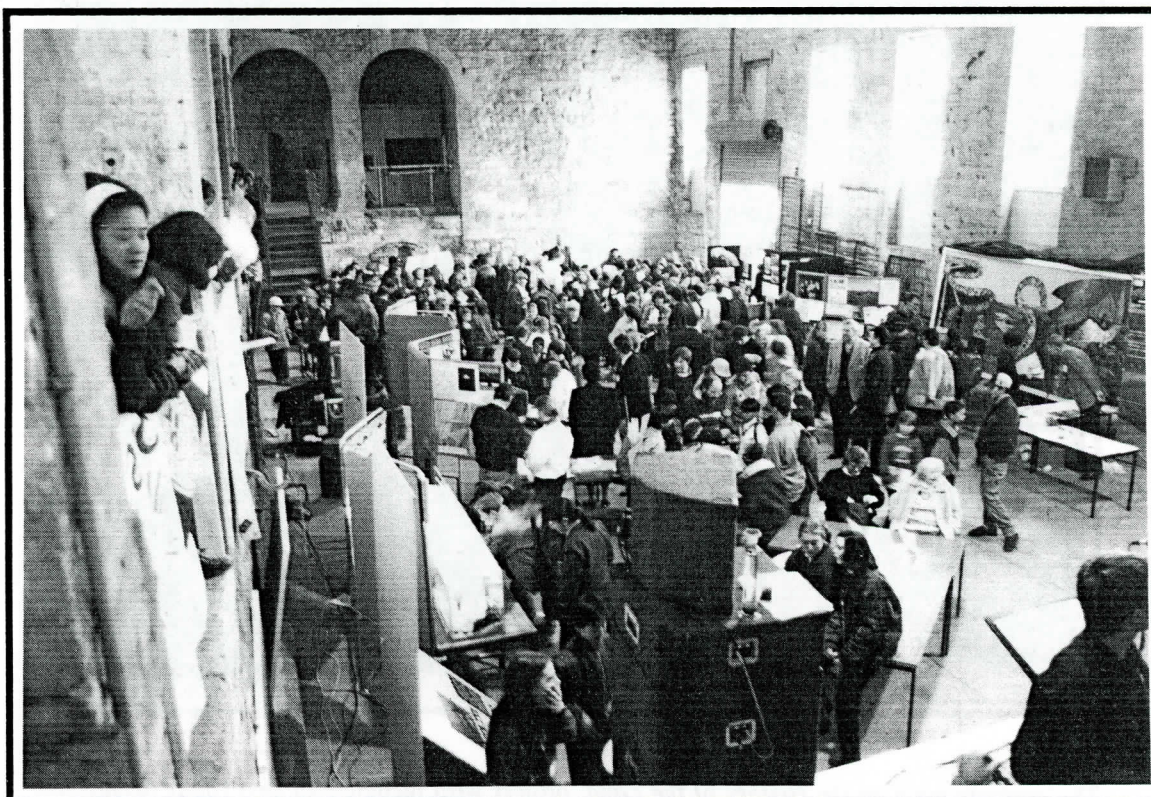
A special feature of 1993 was a promotional campaign publicising Museum services and products. Angelo Salamanca and Kylie Freeman worked on this project, which involved personal contact by phone and extensive mail-outs. Kylie built up a data base of school contacts and a system of documentation for book orders.

Angelo Salamanca and Kerrie Poliness were with the Museum for six months through a 'Life Be In It' graduate employment scheme. Both worked on important aspects of the education program. Kerrie prepared a kit of resource material suitable for use in schools in Aboriginal studies programs. She also was curator for the *Daughters of the Dreaming* exhibition and prepared extensive publicity for schools.

Kylie Freeman initiated an art competition for primary schools and later developed the entries into an exhibition. This was very popular and demonstrated the children's keen interest in Koorie culture and history.

The Koorie Gardening team is providing an important model in Koorie education and the team have done very well to complete two years. The Museum staff have provided training to the LEAP team in horticulture, design, mosaic art, archaeology, Aboriginal Studies, oral history and communications as well as practical skills such as drystone walling, concreting, bluestone masonry.

The Visitor Centre has been frequently used for workshops, in-service sessions and as a venue for talks and tours on the history of the site. Groups have visited the Museum from many parts of Melbourne and numbers are likely to increase in the coming years.



Opening of Science Week 1993: Hundreds of students came from all over Melbourne for a day of activities in the main bluestone building at Pipemakers Park, organised by the Science Teachers Association. The Living Museum provided resources for the day, including displays on the environment and industrial history of Melbourne's west.

A BREATH OF FRESH AIR

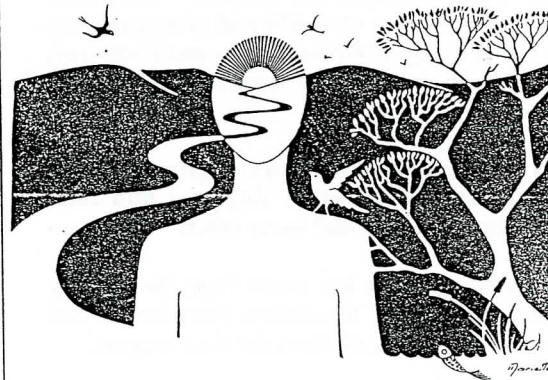
Further developments have occurred in the area of environmental education opportunities for people with disabilities through the Living Museum during 1993-1994. The survey of disability and environmental education services and the pilot environmental education sessions held in November 1992 were documented in a report 'A Breath Of Fresh Air'. This report was sent to all who were involved and had since been sold to a wide variety of disability, recreational and environmental education service providers. The project officer Helen Laffin was invited to speak to tertiary students at Broadmeadows TAFE and RMIT Leisure and Tourism course.

A video was taken of the pilot sessions and with the assistance of a Life Be In It funded worker at the Living Museum, it was edited and made more clear in its organisation. It has been viewed by ie, Coburg Adult Training Centre, on request to assist them in establishing their own environmental education service. This is a very positive outcome.

The Victorian Environmental Education Council assisted the Living Museum in expanding its scope in environmental education. It provided funding for the organisation for a seminar relating to environmental education opportunities for people with disabilities held in August. Speakers were from a range of services - Zoo Education Services, Gould League, Ilma Lever Garden Centre, Cecily Guerin and Blackwood Outdoor Education Centre.

A BREATH OF FRESH AIR

Environmental Education
for People with
Disabilities
In The Northern and Western Regions of Melbourne



HELEN LAFFIN

MELBOURNE'S LIVING MUSEUM OF THE WEST INC
1993

Though the turn out of participants was not as large as we would have like, the quality of the speakers was excellent and all those who attended gained a great deal of information. The proceedings of this seminar will be available at the Living Museum as another environmental education resource tool.

The VEEC fund have also been used to assist in the interpretation of the nature trail which is being developed with in Pipemakers Park. Park notes have been written and are available to the public. These will be updated as the trial change and the plants become more established. The royal Victorian Institute of the Blind have developed some large scale maps of the nature trail and a tape describing the present trail. These are available at the Museum.

The VEEC provided the Living Museum with funds to develop its own environmental education strategy to create a framework around all its existing environmental education relates to projects. A draft of this strategy has been written and presents to the Living Museum's Committee of Management for comments. Although the Victorian Education Council is now defunct, the establishment of the environmental education policy is still significant to the workings if the Museum. Its location and links with Melbourne Parks and Waterways make for it more vital and relevant to have formal strategies documented to enhance its credibility and innovative work in this field.

Helen Laffin has continued to work with the above projects and is investigating the possibility of future funding to continue the Living Museum's work in environmental education services for people with disabilities and the wider community.

Helen Laffin

PIPEMAKERS PARK NATURE TRAIL July 1993

BACKGROUND
Melbourne's Living Museum of the West has received funds from the Victorian Environmental Education Council, Open Space 2000 and Melbourne Water, to establish a nature trail in the park. The Koonie Garden Team, co-ordinated by Jeff Walsh, and based at Melbourne's Living Museum of the West, are doing all the hard work of planting and creating new paths, and the Living Museum is providing the research and design.

The trail focuses on plants indigenous to the area and shows the different environments or eco-systems of Melbourne's western region and how these have been used or affected by human intervention. The trail highlights the native plants which were used by Aborigines for food, medicine, and for making implements such as baskets, decoration of tools. The trail also aims to address some of the needs of people with disabilities eg. larger and clear signs (none at present) and smooth and wide paths.

The trail is in its first stage of development at present with three areas of focus. These represent the low growing plants of the grasslands and grassy woodlands of the volcanic plains and river flats, the riparian or river edge vegetation of the Manbyrnong River, and the wetland habitats of the brackish and fresh water swamps, once common in the district. Later it is hoped to extend and elaborate the trail to include the escarpment environment of the valley sides where She Oak forests once flourished.

1) GROUND COVER
This has been established on mounded and landscaped beds in front of the Visitor Centre and next to the Pipe Factory site. There is a variety of grasses, climbers and Aboriginal plants planted in this area which represent the original environment of the Western Plains grasslands.

GRASSES
*Tussock Grass (*Poa labillardieri*) - dense and tall with small stalked spikelet heads.

*Wallaby Grass (*Duttonia*) - a graceful perennial which grows up to 1.25m high with a narrow, drooping flower head which resembles a tiny head of oats.

*Kangaroo Grass (*Themeda triandra*) - a dense tussocky perennial with rusty-red flower heads and prominent shiny black bristles.

*Feather Spear-grass (*Stipa*) - slender cane-like stems with feathery flower heads.

CLIMBERS

*Clematis (*Clematis microphylla*) - forms dense masses over other shrubs and trees and has pale cream spring flowers.

*Native Raspberry (*Rubus parvifolius*) - a scrambly prickly shrub with leaves light green and wrinkled. Has pink flowers and red fruit.

*Common Apple-berry (*Billardiera cymosa*) - a climber with narrow leaves and mauve flowers. Greenish-red fruit when ripe.

*Hardenbergia

*Running Postman (*Kenedia prostrata*) - recognisable by red 'pea' flowers arising from long trailing stems. Grey-green leaves with crinkled edges. Some other interesting plants along the path are

*Old Man Weed (*Centipeda cunninghamii*), also known as Common Sneezeweed. A small green perennial herb with aromatic, rather sticky leaves and green button-like flower-heads.

*Chocolate Lily (*Dichopogon strictus*) - chocolate scented purple flowers held upright along branched stems arising from grass-like leaves.

*Wattle Mat-Rush (*Lomandra filiformis*) - tough, flat, blunt tipped grey-green leaves up to 15cm long with loose collections of small pale yellow flowers.

*Bulbine Lily (*Bulbine bulbosa*) - a native lily with unbranched flowering stems up to 40 cm high with wide yellow flowers and long cylindrical leaves.

BRENBE-AL: KOORIE HERITAGE NETWORKING PROJECT

In this the Year of Indigenous Peoples, I have been involved in a lot of talks with different groups ranging from the Labor Party of Williamstown and Footscray, through to schools, primary and secondary, and tertiary institutions.

There has also been work with service groups such as Rotary International, Western Region Child-care, Friends of Kororoit Creek and many others

Funding for this project has come from the Stegley Foundation, the Lance Reichstein Foundation and ANZ Trustees and we thank them for their support.

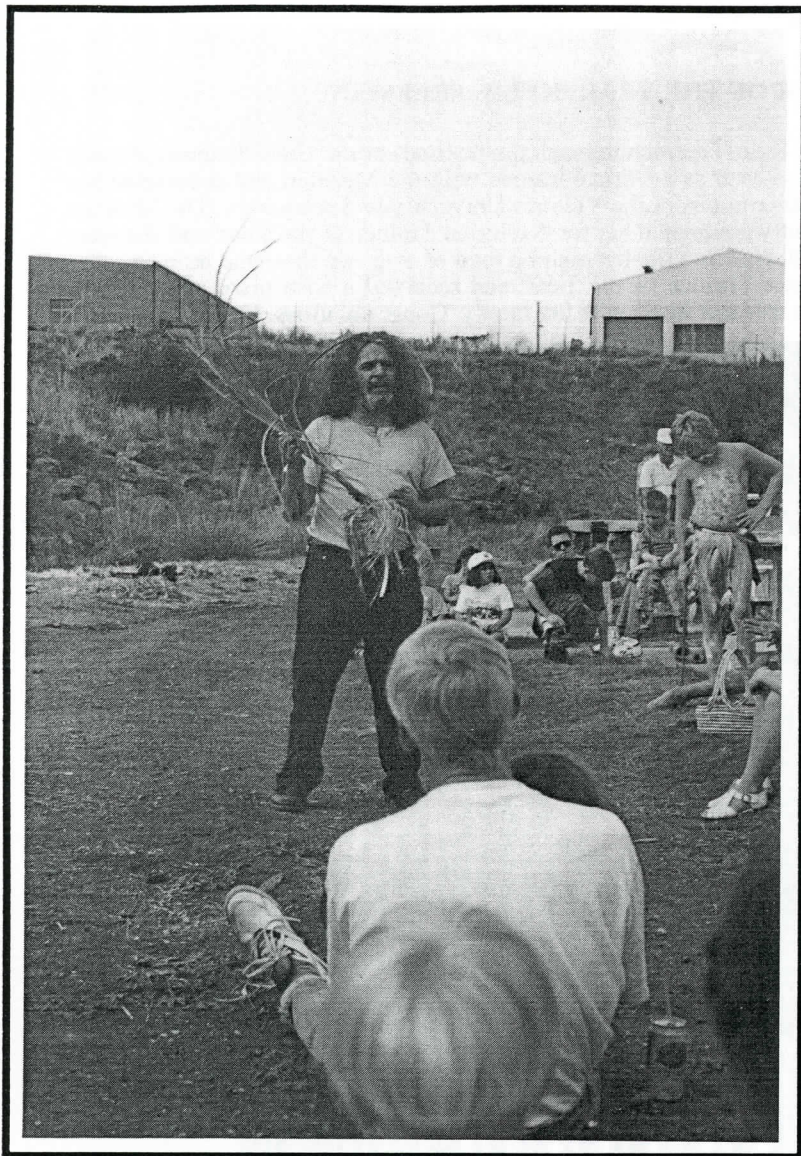
BRIEF SUMMARY OF ACTIVITIES

- # Educational talks at schools - primary, secondary and tertiary
- # Educational talks at other organisations
- # Providing performers and dancers for schools
- # Providing performers and dancers for other organisations and events, for example, the Tet festival.
- # Networking with Aboriginal organisations and individuals in and around the Western Suburbs
- # Networking with relevant government agencies, for example Aboriginal Affairs, Social Security, DEET
- # Developing a curriculum for Aboriginal studies in schools, and advising teachers on curriculum matters
- # Researching and producing an Aboriginal information resources kit
- # Giving research assistance to individuals, both Aboriginal and non- Aboriginal
- # Holding exhibitions about Aboriginal people and by Aboriginal people in the Museum's Visitor Centre in Maribyrnong.
- # Planning an ongoing exhibition program on into 1994 specifically promoting up and coming Aboriginal artists.
- # Helping promote Aboriginal artists with direct assistance like making applications for funding, selling work and finding jobs
- # Organising a drawing competition about Aboriginal life for primary schools in Melbourne's western region
- # Teaching Aboriginal culture as part of a horticultural training program for young unemployed being held at the Museum
- # Consulting on a large (100 metres x 50 metres) Art/Environmental Discovery Trail being constructed at Pipemakers Park which is employing Aboriginal themes and stories
- # Developing a stock of products for sale at the Museum, e.g. books, T-shirts and posters which promote Aboriginal culture
- # Conducting research into Aboriginal history in the western suburbs including recent history
- # Developing a questionnaire measuring awareness of Aboriginal culture
- # Promoting the program and the issues through the local media.
- # Generally educating the rest of the Living Museum staff to Aboriginal issues
- # Involving an Aboriginal trainee in the program
- # Linking with local government & local government events
- # Establishing an ongoing presence at Melbourne Water events
- # Finding family or tribal connections for Aboriginal people
- # Specifically engaging a job trainee in the program and a volunteer in research in local matters
- # Providing Koori contacts for the Waderbirds project, an international performance project relating to the flight of waderbirds between New Zealand, Australia, Japan and Siberia.
- # Giving a paper on the project to a Council of Australia Museum Associations in Hobart.

Larry Walsh
Co-ordinator



One of the works by a Koori artist for the Waderbirds project



Aboriginal Project Officer, Larry Walsh, talking about uses of indigenous plants at a tree planting day at Buckingham Reserve, Kororoit Creek, Sunshine, organised by Melbourne Water.

Below:
Carol Fraser, Aboriginal Jazz singer, performs at the opening of an exhibition about Koorie women, 'Daughters of a Dreaming', staged at the Living Museum by the Museum of Victoria's Aboriginal Cultural Heritage Unit in 1993.



KOORIE TRAINEE OF THE YEAR: KYLIE FREEMAN

An exciting event of 1993 was the success of Kylie Freeman in reaching the finals of the 'State Training Board's Trainee of the Year' award. Kylie finished her year as a clerical trainee with the Museum and completed her Vocational Studies Certificate at the St. Albans campus of the Victoria University of Technology. The Museum and Western Region Group Training Ltd. jointly nominated her for 'Victorian Trainee of the Year' and she went through a series of interviews before being selected as a finalist out of a total of over two thousand trainees. She was eventually chosen as 'Victorian Koorie Trainee of the Year' and received a cash prize and a trip to Brisbane. Kylie later went to Canberra for the national finals with her family. Congratulations, Kylie.



KYLIE Freeman, 17, of Sunshine has won the Outstanding Koori Student of the Year award in the Victorian Training Awards. She received a trophy, a trip to Queensland and prize money for her efforts. Kylie is a secretary at the Living Museum of the West. Picture: COLIN MOSS.

RADIO

Radio activity in 1993 saw the completion of the Way out West project which dealt with environmental issues in the Western Region. This brought us into contact with a wide range of groups operating in the west from the large international organisations such as *Greenpeace* through the regional groups like the *Hazardous Materials Action Group* and the *Save the West* group to the site-specific organisations like *Friends of the Maribyrrong Valley* and *Friends of Truganina Swamp*. We also talked to local business, Government departments and Melbourne Water as well as to individuals.

The Living Museum will continue this environmental approach in the coming year, because of a new source of funding support. Late in 1993 we learned that we had attracted a grant of \$ 9,500 from the Federal Ministry for Resources & Energy, for a series on energy efficiency.

One of the issues dealt with in the *Way Out West* series was the issue of Coode Island and the proposal to relocate the chemical storage facility to near Point Wilson.

This issue attracted the most listener response, with many feeling they were not being kept informed. Many of the guests on *Way Out West* have continued to maintain contact with the Living Museum Show but as yet we have not been able to realise the objectives to have a regular environmental program operating independently on 3WRB.

We have however been successful in helping to establish a Koorie Radio Program with Larry Walsh at the controls and that show is attracting quite a deal of interest. The Community Health Hour, which the Museum set up and continues to provide technical support for, continues to operate at a high standard with the Essendon Community Hospital and Williamstown Hospital having recently joined the group at their request. We have recently received a further request from the Westgate Community Health Centre to join the group. The Health program and the Living Museum Show have both been repeated on early morning WRB programs. The Living Museum Show continues to offer the most extensive range of local issues and mostly importantly local guests, many whom had requested the interviews which is an indication of the reputation of the program.

Mark Dawkins



left to right: Work experience student Belinda Kitanovska, Koori Officer Larry Walsh, Mark Dawkins and trainee panel operator Matthew at 3WRB studios.(photo taken by Peter Scrivener)

RESEARCH

Research into Aboriginal Archaeology in the region has continued through a range of consultancies carried out by Gary Vines. These have included archaeological surveys of the proposed Hopkins Road freeway interchange for Vic Roads, and a survey of the Sydenham area for a proposed shopping centre.

While consultancies are conducted on a pay for services basis, they often result in follow up work, such as that for the Tarneit Road Structure Plan area, where information on the location of Greeves' Golden Fleece Inn on the Werribee River was requested in order to resolve the concerns of land owners.

The recording of the industrial archaeology of Victoria has continued with consultancy projects for the Swallow and Ariel Biscuit Factory, New Works, Lakes Entrance and Wunderlich Tile-works.

The Lakes Entrance project involved recording archaeological remains connected with the construction for the artificial channel into the lakes

and revealed a complex system of tramways and piers as well as relics such as winches, steam engines and house sites.

Gary again played a part in a multi-disciplinary team looking at the historic Port Melbourne Swallow & Ariell Biscuit Factory. Gary's input was in tracing the evidence of the original structures on the site dating back to the 1850s and making an assessment of their significance.

The study of the Wunderlich Tile-works was carried out for the owners, in order to identify the significance of the surviving structures for an Historic Buildings Council classification hearing.

Research into the history of Pipemakers Park was furthered in a small way thanks to a test excavation on the site of the boiler house of the Melbourne Meat Preserving Co. This was carried out as part of the LEAP training scheme and revealed a number of archaeological features including what appears to be the buried foundations of the back wall of the boiler house, behind the Museum Visitor Centre.

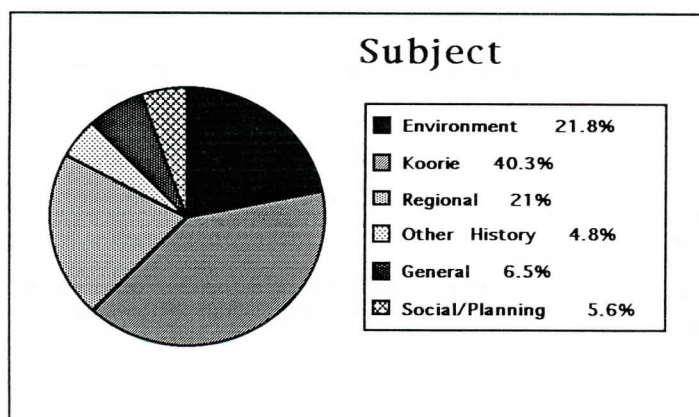
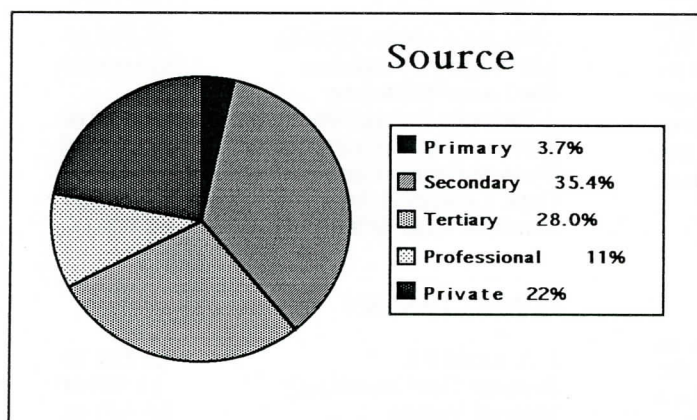
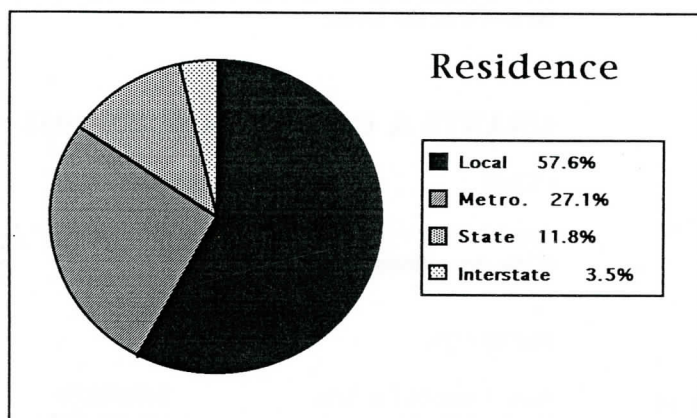
Gary Vines



Industrial archaeologist, Gary Vines (standing right) excavating old drains and buried foundations from the early meatworks in Pipemakers Park with the assistance of LEAP team member, Lily Simca (centre) and a volunteer from Latrobe University Archaeology Department.

RESEARCH INQUIRIES 1993

The resource centre has provided assistance and information to a broad cross-section of the community, from within the Western Region, as well as other Melbourne suburbs and throughout Victoria and interstate. The break-down of these inquiries is shown in the accompanying pie charts. The first shows the origin of the people making inquiries, the second shows the background of those people, whether they are from primary or secondary schools, tertiary institutes, professional organizations such as councils, libraries, heritage and planning bodies, consulting firms, historical societies, or private individuals. The final chart shows the subject of inquiries, whether environmental matters, Aboriginal history and culture, local or regional history, other history, general inquiries such as arts and tourism, or social and planning issues. The general pattern which emerges is that more than half of Resource Centre users come from within the region, nearly three quarters are from students and Koorie issues, environment and regional history are the most common subjects. The importance of Koorie issues is a direct result of the work of Larry Walsh in promoting Aboriginal matters in the region.



ACQUISITIONS

The Resource Centre has moderately expanded, mainly through material generated by research projects and consultancies, and a small number of donations. Notable acquisitions are a series of recordings from 3WRB radio broadcasts from the Living Museum Show, some of which were produced by members of the LEAP Team; copies of personal papers and histories inc. Mr. Robert Friend's Tough Times; Photographs such as two wonderful framed views of Maribymong Motor Boat Co. excursion boats on the Maribymong River.

Loan of display items such as a Sundial engine, made at the Sunshine Harvester Works, loaned by Rick Van Keulen and used as part of a major exhibition of factories in the region.

One of our volunteers, Sharon Payne, has assisted in cataloguing material in the Resource Centre which has grown substantially, particularly in the area of planning reports, heritage studies and environmental impact statements provided by various planning and consultancy firms as part of their community consultation.

This has in turn lead to further research inquiries as the Living Museum becomes an important regional source for information on planning issues. The Museum is often consulted by these firms, who see us as a valuable source of heritage and environmental information and a point of contact for community input.

MUSEUM STAFF 1993

Olwen Ford	Museum Director
Peter Haffenden	Finance Manager & Projects Co-ordinator
Judy Xenophou	Finance Officer
Gary Vines	Archaeologist/Curator
Mark Dawkins	Projects Officer
Libby McKinnon	Artist
Jeffrey Walsh	Co-ordinator Koorie Gardening Team
Kylie Freeman	Secretary / Projects Officer
Larry Walsh	Co-ordinator Brenbe-al
Helen Laffin	Environmental Projects Officer (Part-Time)
Kerrie Poliness	Exhibitions Officer
Angelo Salamanca	Education Officer

VOLUNTEERS

Francine Stacey
Rod Faulkner
Sharon Payne
Frank Ford
Rachel Ford
Angelo Salamanca

THANKS

A sincere thank you to all supporters of Melbourne's Living Museum of the West over the past year, especially Museum members, Committee of Management members, our funding bodies, volunteers and hard-working Museum staff. We particularly acknowledge the contribution of Arts Victoria and of Melbourne Parks & Waterways through the staff of Brimbank Park. We have greatly appreciated input from Hilary Newton, Manager, Museums Unit, Arts Victoria and from John Argote, Acting Manager at Brimbank Park.

TRIBUTE

In 1993, Irene Wescott completed four years as president of Melbourne's Living Museum of the West and decided not to seek re-election. Irene did a splendid job as President and we thank her for her leadership, support, and guidance. Irene was one of the Museum's first volunteers, putting in many hours on cataloguing in the early years and more recently assisting with analysis of survey sheets and research inquiries. Irene gave a most generous donation of \$1,000 to the Museum at a time of financial difficulty and we sincerely thank her for this fine gesture and for all her magnificent contribution over the years. The Committee of Management unanimously voted on a resolution that Irene Wescott be made an Honourary Life Member of Melbourne's Living Museum of the West and we look forward to her continuing involvement in the activities of the Living Museum

ADMINISTRATION & FINANCE

1993 was a year of re-structuring the accounts of Melbourne's Living Museum of the West to show more clearly specific sources of income and areas of activity: core operations, projects and consultancies. The Finance Manager, Peter Haffenden, has undertaken a number of analyses of our finances to demonstrate the 'leverage' capacity of our core grant and its effect in attracting other grants and financial support. We introduced a new system of documenting expenditure and income on projects and consultancies and provided training for staff to become familiar with the new system.

Our application to the Australian Taxation Office for tax deductibility was successful and this should be useful in the future.

GRANTS & CONSULTANCIES 1993

CORE

Arts Victoria	\$83,000.00
(Core operations)	

PROJECTS

Aust. Council for Arts	\$10,000.00
Dept. of Planning	\$5,000.00
Dept. of Planning	\$10,000.00
ANZ Trustees	\$15,000.00
Aboriginal Affairs Victoria	\$5,175.00
The Stegley Foundation	\$10,000.00
The Lance Reichstein Charitable Foundation	\$10,000.00
Western Region Group Trg	\$47,100.00
Western Region Commission	\$1,000.00
Dept. Conserv & Envi	\$2,500.00
Sunshine High Schl Reunion	\$2,000.00

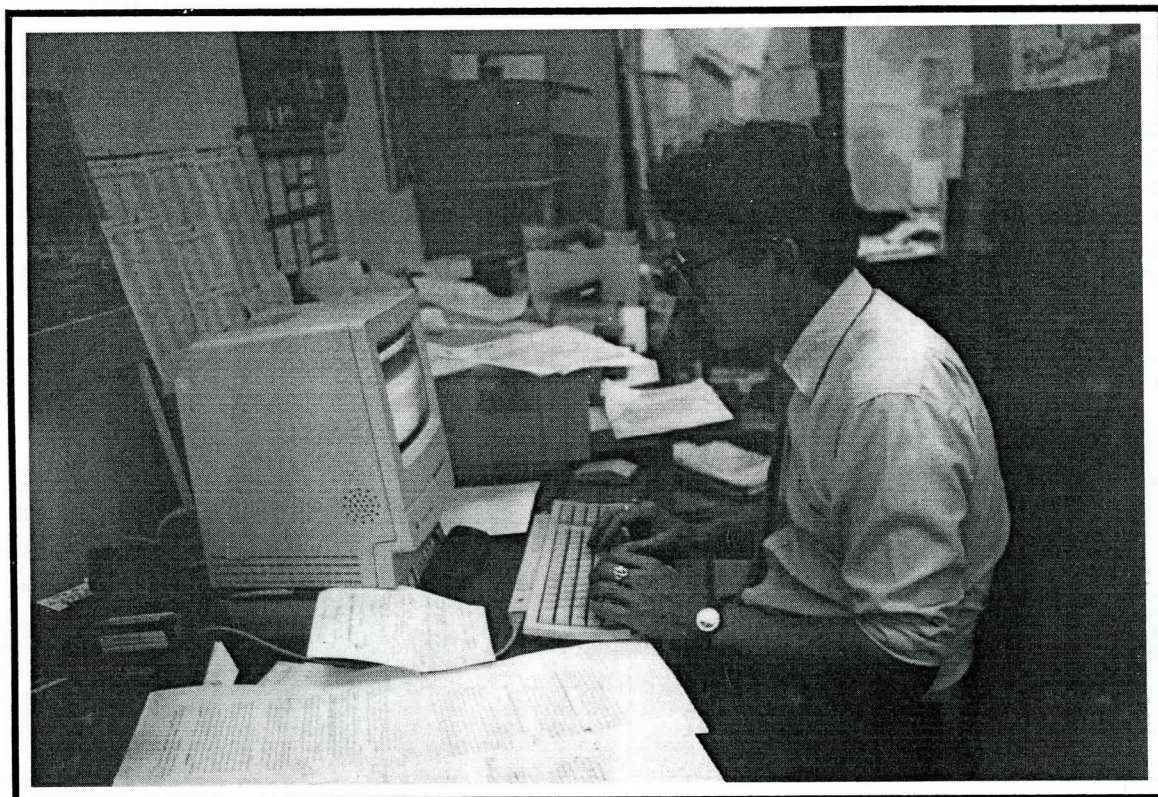
CONSULTANCIES

J. A. Dodd P/L	\$8,254.70
Bendigo Gas Consultancy	\$1,500.00
Shire of Melton	\$5,300.00
Arnotts Biscuits	\$1,500.00
Melbourne's Westend	\$2,496.00
Graeme Butler & Assoc	\$1,800.00
WBCM Consultants	\$1,000.00
Historic Buildings Council	\$2,500.00
Vic. Roads	\$2,100.00

Note:

These figures do not include monies received for the Parkcare consultancy from Melbourne Water.

TRAINING & PROFESSIONAL DEVELOPMENT



The Museum has provided opportunities for staff to attend conferences and seminars. For example, Peter Haffenden attended a seminar in Sydney on marketing the arts and Elizabeth McKinnon attended the Asia Pacific Arts Conference Triennial in Brisbane. Elizabeth also took part in a series of mosaic workshops conducted by International Specialised Skills at the Holmesglen College of TAFE. Kylie freeman completed a Certificate in Vocational Studies at the Victoria University of Technology and gained 'on-the job' training in mounting exhibitions. Mark Dawkins and Olwen Ford took part in a First Aid course (Level 2) conducted by the Red Cross and arranged and funded by Melbourne Parks & Waterways. Peter Haffenden has continued to be involved in the Arts Management Advisory Group and has also had 'on-the-job' training in word processing, using an Apple McIntosh computer.

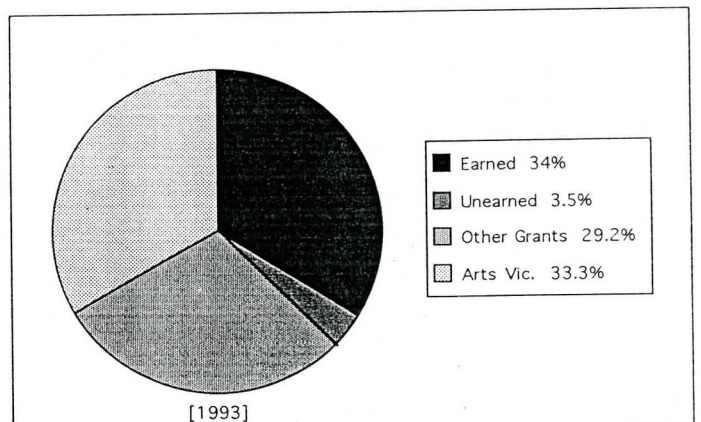
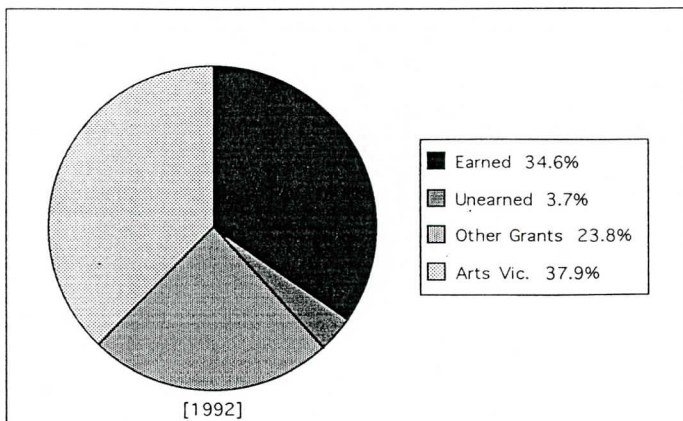
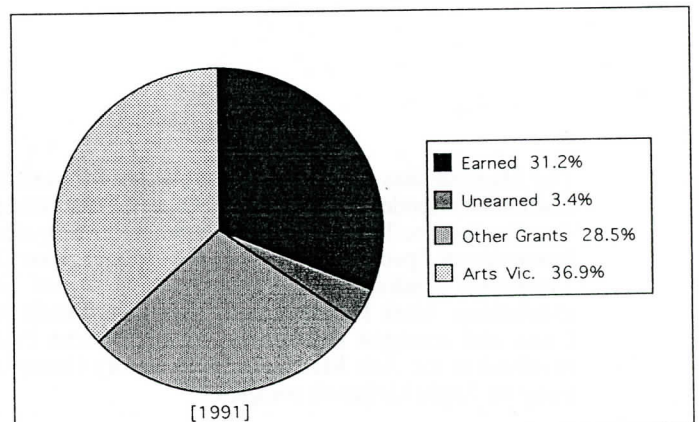
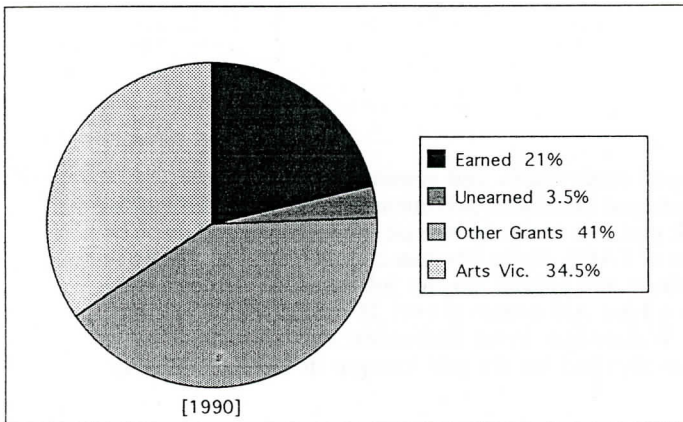
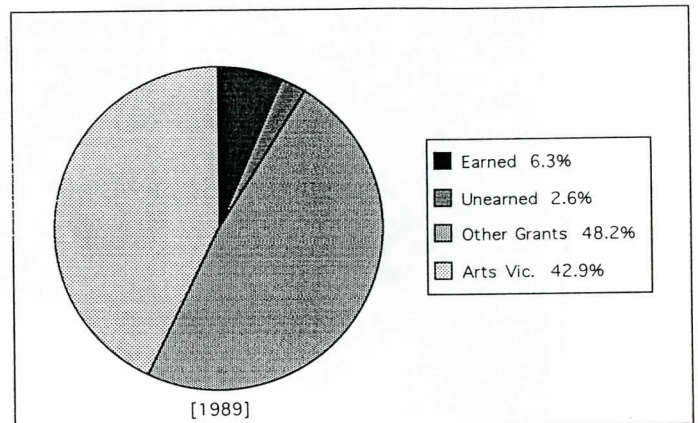
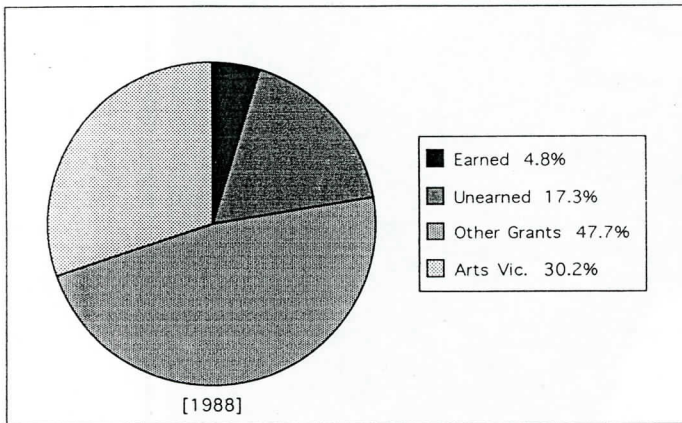
CONSULTANCIES

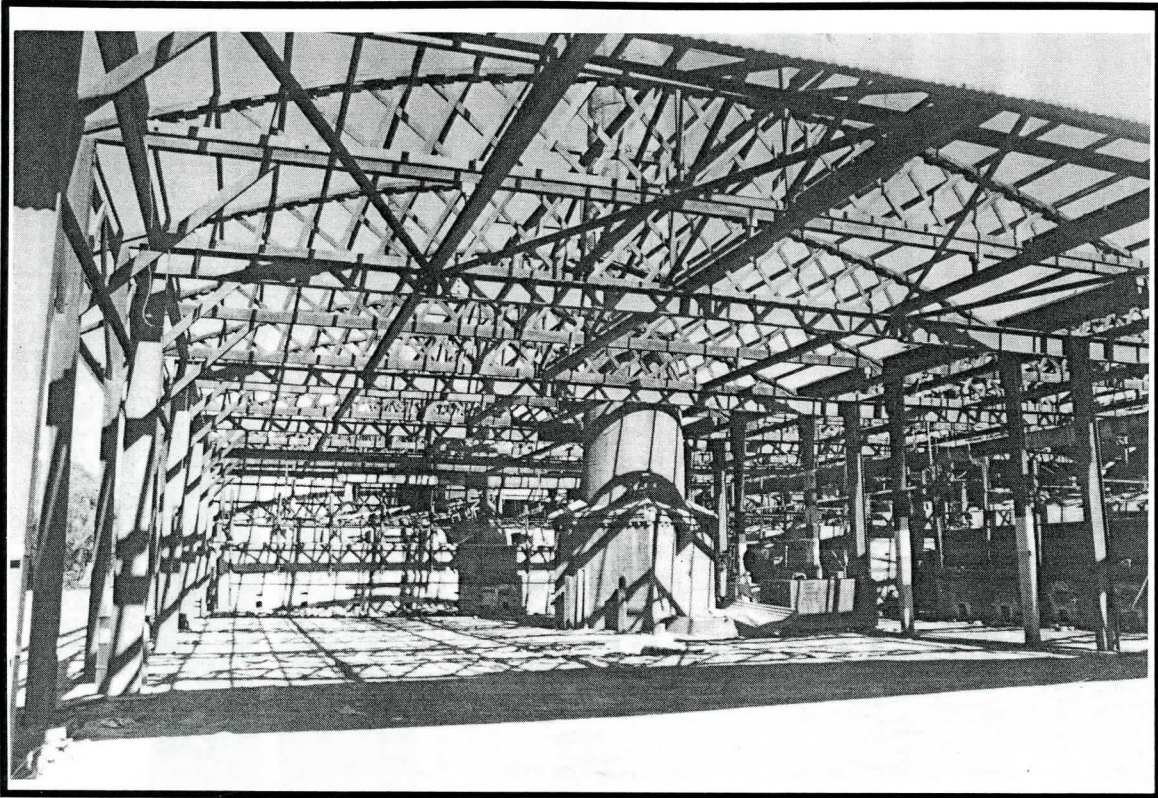
As part of the Museum's strategy for long term financial viability we have continued to adapt to the commercial market by working in a range of consultancy fields. These have included the heritage and archaeology consultancy work around the state which is referred under the research section of the Annual Report, the artistic work of Libby McKinnon, and administrative works related to the Parkcare and Koorie Garden projects

A major consultancy was secured through Melbourne Water for the administration of the Parkcare Project where the Living Museum took over the management of finances for a project looking at developing links between parks and community and friends groups in the region.

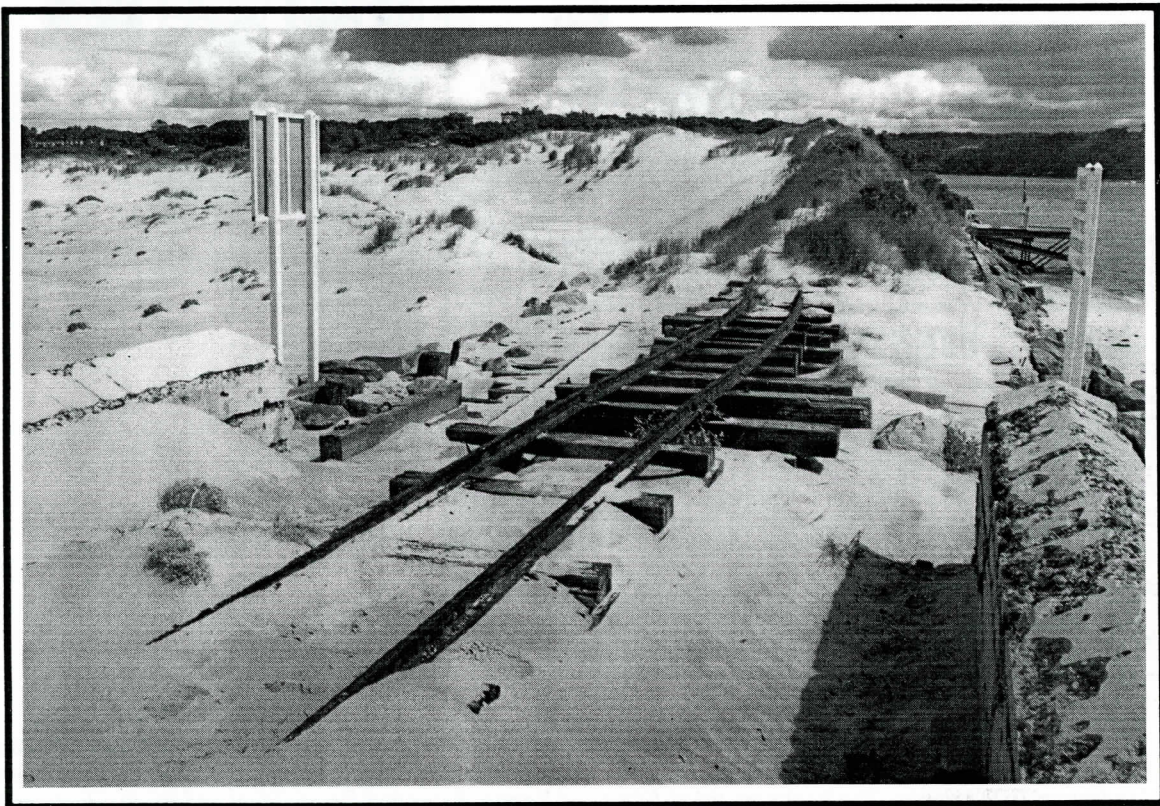
A number of consultancies begun in 1992 were completed in 1993, for which payment appears in this year's financial statement. Libby McKinnon completed her extensive work on the Newmarket Saleyards - Lynch's Bridge Project, Gary followed up the Pinkerton graves relocation project with a visit to Melton for the rededication of the graves and cairn on their new site, and several other consultancies were wound up early in 1993.

Income from consultancies increased substantially in 1993 due to the Parkcare, LEAP and Korrie Garden Team earnings although it remained around 34% of total income because of an increase in total earnings. Again 1993 has demonstrated an improvement in the return on the Arts Victoria core operations grant which has allowed us to continue to attract other funds by giving stability to the Living Museum.





The remains of the tile kilns at Wunderlich in Vermont. Gary was consultant to the owners of this site in an Historic Buildings Council registration hearing which resulted in part of the site going on the Register of Historic Buildings.



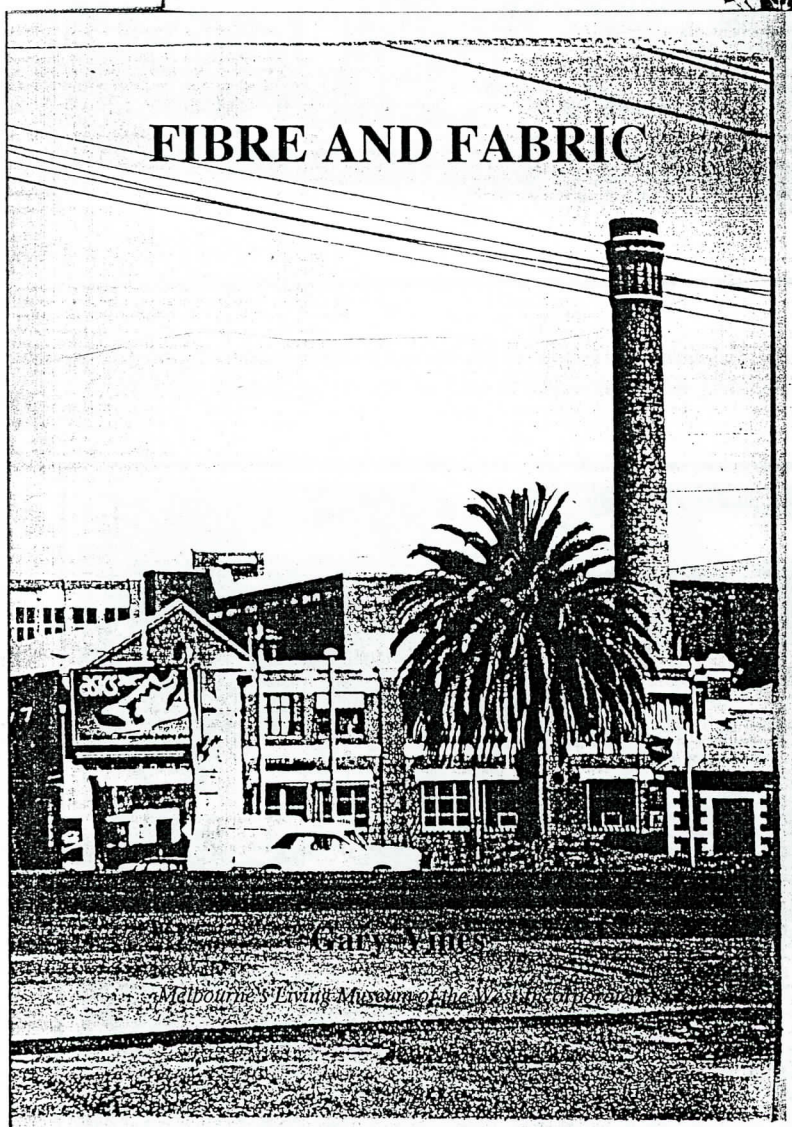
A narrow gauge tramway disappearing into the sand dunes at Lakes Entrance. The New Works site retains many important maritime relics from last century. Gary was involved in recording the archaeological components of the site.

QUARRY AND STONE

MEAT AND BY-PRODUCTS

FARM AND DAIRY

FIBRE AND FABRIC



1993 saw the Museum continue its publications program and its focus on interpreting work and industry in the western suburbs of Melbourne with the production of a series of small books on important industries in the region. The books are titled *Fibre and Fabric*, *Farm and Dairy*, *Meat and By-Products*, and *Quarry and Stone*. These books will be released in 1994.

Another book to be released in 1994 is *Your History Mate*, a book about the Museum itself which illustrates the philosophies of the Museum in action through descriptions of activities and events and traces the evolution of the Living Museum over the ten years of its existence.

YOUR HISTORY MATE



The work of a community museum in Melbourne's western suburbs



AUDITOR'S REPORT

6 Tenterden Street
Spotswood Vic 3015

To the Members of
Melbourne's Living Museum
of the West Incorporated

I have examined the books of account and in my opinion the accompanying statements i.e. Balance Sheet and Income and Expenditure Statements have been constructed so as to give a true and fair view of the financial position of Melbourne's Living Museum of the West as at 31st December 1993.



Ron Angwin, FCPA

15 April 1994

MELBOURNE'S LIVING MUSEUM OF THE WEST INC
BALANCE SHEET
AS AT 31 DECEMBER 1993

1992		1993	
\$		\$	\$
	<u>Current Assets</u>		
7,661.25	<u>Cash at Bank-General</u>	30,875.10	
3,503.43	-Savings A/C	<u>22,984.88</u>	53,859.98
100.00	Change Float	100.00	
3,016.50	<u>Debtors -Publications</u>	3,843.44	
22,431.71	-Consultancy	5,563.75	
	-LEAP	<u>14.95</u>	9,422.14
23,449.00	<u>Stock - Publications</u>	17,519.00	
41,274.00	-Work in Progress	<u>28,163.72</u>	45,682.72
	<u>Investments</u>		
	Term Deposits		67,000.00
	<u>Fixed Assets</u>		
37,141.00	Cost	38,586.00	
32,391.00	Provision for Dep'n	<u>33,818.00</u>	
4,750.00	WDV as at 31/12/93		<u>4,768.00</u>
106,185.89	<u>TOTAL ASSETS</u>		180,832.83
	<u>Current Liabilities</u>		
4,580.53	Creditors		10,563.11
	<u>Accruals/Provisions</u>		
41,274.00	Project funds unexpended	28,163.72	
	Grants in advance	77,000.00	
12,121.21	Stock adjustment	6,191.21	
11,537.00	Annual leave	7,853.00	
	Sick leave	4,000.00	
	Long service leave	<u>6,825.00</u>	130,032.93
	<u>Long Term Liabilities</u>		
6,200.00	<u>Loan - School Trust</u>	-	
	- Principle	-	
<u>808.36</u>	Interest accrued	-	
<u>76,521.49</u>			<u>140,596.04</u>
29,664.70	<u>NET ASSETS</u>		<u>40,236.80</u>
	<u>Trust Funds</u>		
	Balance as at 31/2/92 (adj)	46,477.93	
	Add Loan Writeback	<u>6,200.00</u>	
		52,677.93	
	Deficit	<u>12441.13</u>	
29,664.70	<u>TOTAL TRUST FUNDS</u>		<u>40,236.80</u>

MELBOURNE'S LIVING MUSEUM OF THE WEST INC.

NOTES TO BALANCE SHEET

Contingent Liabilities \$31,032.30

To be incorporated in the accounts as and when required.
This figure is made up of two items.

Salaries \$24,523.94

Back pay currently subject to legal interpretation

Loan - School Community Trust \$6,508.36

Awaiting further verification that the loan plus accrued
interest will be waived without further payment.

MELBOURNE'S LIVING MUSEUM OF THE WEST INC
STATEMENT OF INCOME AND EXPENDITURE STATEMENT
For Year Ended 31 December 1993
CONSOLIDATED ACCOUNTS

<u>1992</u>		<u>1993</u>
\$		\$
	<u>Income</u>	
100,916.93	Core Operations	128,887.10
52,067.10	Projects	73,774.70
65,938.01	Consultancies	51,550.65
	Koorie Gardening Project	81,754.84
	LEAP	<u>50,428.48</u>
218,922.04	<u>Total Income</u>	386,395.77
	<u>Expenditure</u>	
127,543.00	Core Operations	132,419.79
49,141.10	Projects	86,884.98
49,798.24	Consultancies	41,735.73
	Koorie Gardening Project	69,497.75
	LEAP	<u>55,188.37</u>
<u>226,482.34</u>	<u>Total Expenditure</u>	<u>385,726.62</u>
7,560.30	Deficit	-
2,926.00	Add transfer to Project W.I.P.	-
	Surplus	669.15
	Less transfer to Project W.I.P.	<u>13,110.38</u>
<u>10,486.30</u>	<u>Deficit on Operations</u>	<u>12,441.13</u>

MELBOURNE'S LIVING MUSEUM OF THE WEST INCORPORATED
STATEMENT OF INCOME AND EXPENDITURE
For Year Ended 31 December 1993
CORE OPERATIONS

<u>1992</u>		<u>1993</u>
\$		\$
	<u>Income</u>	
	Administration Services	29,405.45
3,566.90	Donations	1,000.00
83,000.00	Grants	84,000.00
412.26	Interest - Bank	618.22
2,941.95	- Term Deposit	1,072.24
769.00	Kiosk	572.68
1,210.00	Membership	1,095.00
6,566.82	Sales - Publications	4,851.11
2,450.00	- Seminars & Tours	5,509.40
-	Sundry	<u>763.00</u>
100,916.93	<u>Total Income</u>	128,887.10
	<u>Expenditure</u>	
3,480.00	Accounting / Audit Fees	2,400.00
47.00	Advertising / Promotions	250.00
726.65	Bank Charges	968.80
1,282.00	Depreciation	1,427.00
1,872.62	Exhibition Materials	2,021.25
548.54	Gas	325.68
3652.09	Increase	6,100.00
-	-Annual Leave Provision	4,000.00
-	-Sick Leave Provision	6825.00
-	-Long Service leave	784.45
847.50	Insurance	861.54
1,002.50	-General	(308.36)
650.00	-Workcare	1,851.70
2,026.56	Interest	(308.36)
909.80	Kiosk Expenses	1,851.70
3,646.81	Legal Fees	-
579.87	Photocopying	2,130.88
3,460.91	Photographic -Material	422.76
1,033.80	-Services	757.25
350.84	Postage	805.40
-	Power / Light	1,488.81
-	Printing	759.00
580.30	Professional Services	169.50
265.00	Publications	5,068.00
1,082.00	Refreshments / Entertainment	307.00
85,106.92	Registrations / Subscriptions	(74.50)
6,846.06	Salaries	75,955.17
448.50	-Back pay	-
230.00	Security	234.00
633.00	Seminars	-
1,767.94	Staff Amenities	1,014.30
(52.38)	Stationery	4,192.52
575.80	Superannuation-	4,503.05
2,682.46	Sundry Expenses	372.50
-	Telephone	2,101.15
1,259.91	Training / Work Experience	2,603.00
	Travel	2,102.94
127,543.00	<u>Total Expenditure</u>	132,419.79
<u>26,626.07</u>	<u>Deficit</u>	<u>3,532.69</u>

MELBOURNE'S LIVING MUSEUM OF THE WEST INC

STATEMENT OF INCOME AND EXPENDITURE

For Year Ended 31 December 1993

PROJECTS

<u>1992</u>		<u>1993</u>
\$		\$
52,067.10	<u>Income</u>	73,774.70
	<u>Expenditure</u>	
-	Administration Services	15,341.57
-	Advertising	497.00
3,453.05	Concert Expenses	-
5,670.01	Exhibition Materials	5,728.94
7,307.13	Fees - Consultants	-
-	Gas	158.61
15.00	Hire of Equipment	-
-	Insurance - General	382.04
330.08	- Workcare	418.43
-	Phone	996.19
-	Photocopying	893.67
514.08	Photographic - Materials	23.80
1,095.66	- Services	412.49
19.35	Postage	610.43
-	Power / Light	432.95
477.50	Printing	-
-	Professional Services	5,736.10
-	Publications	1,603.06
-	Refreshments / Entertainment	697.00
224.00	Repairs	-
28,441.91	Salaries	47,616.00
111.86	Stationery	121.10
79.90	Sundry Expenses	335.30
-	Superannuation	2,187.04
-	Training / Work Experience	669.00
<u>1,401.57</u>	Travel	2,024.26
<u>49,141.10</u>	<u>Total Expenditure</u>	<u>86,884.98</u>
<u>2,926.00</u>	<u>Surplus</u>	-
-	<u>Deficit</u>	<u>13,110.28</u>

MELBOURNE'S LIVING MUSEUM OF THE WEST INC

STATEMENT OF INCOME AND EXPENDITURE

For Year Ended 31 December 1993

CONSULTANCIES

<u>1992</u>		<u>1993</u>
\$		\$
	<u>Income</u>	
65,938.01	Fees for Service	51,550.65
	<u>Expenditure</u>	
4,943.37	Exhibitions and Materials	1,736.00
-	Gas	113.50
-	Insurance - General	273.35
461.81	- Workcare	299.16
-	Photocopying	639.65
22.00	Photographic - Materials	-
1,156.11	- Services	120.20
-	Postage	280.64
-	Power / Light	309.79
2,600.00	Professional Services	1,200.00
39,792.88	Salaries	34,231.50
10.80	Stationery	-
-	Sundry Expense	12.00
-	Superannuation	1,563.62
-	Telephone	855.52
<u>811.27</u>	Travel	<u>100.80</u>
<u>49,798.24</u>	<u>Total Expenditure</u>	<u>41,735.73</u>
<u>16,139.77</u>	<u>Surplus</u>	<u>9,814.92</u>

MELBOURNE'S LIVING MUSEUM OF THE WEST INC.

STATEMENT OF INCOME AND EXPENDITURE

For Year Ended 31 December 1993

KOORIE GARDENING PROJECT

<u>1992</u>		<u>1993</u>	
\$		\$	\$
	<u>Income</u>		
	Grants-Project	62,824.00	
	Consultancies	18,374.85	
	Interest Received	418.34	
	Sundry Income	<u>137.65</u>	
	<u>Total Income</u>		81,754.84
	<u>Expenditure</u>		
	Accounting & Audit Fee	500.00	
	Administration Services	9,606.54	
	Bank Charges	178.09	
	Equipment	6,399.56	
	Exhibitions / Materials	8381.47	
	Insurance-Workcare	196.99	
	Photocopying	41.08	
	Photographic - Service	11.95	
	Postage	1.40	
	Professional Services	2,262.00	
	Salaries	35,222.14	
	Staff Amenities	493.00	
	Stationery	127.80	
	Sundry Expenses	200.00	
	Superannuation	1,191.13	
	Training/Work Experience	4,260.50	
	Travelling	424.10	
	<u>Total Expenditure</u>		<u>69,497.75</u>
	<u>Surplus</u>		<u>12,257.09</u>

MELBOURNE'S LIVING MUSEUM OF THE WEST INC.

STATEMENT OF INCOME AND EXPENDITURE

For Year Ended 31 December 1993

LANDCARE ENVIRONMENT ACTION PROGRAM (LEAP)

<u>1992</u>		<u>1993</u>	
\$		\$	\$
	<u>Income</u>		
	Grants - Projects	50,100.00	
	Interest Recd.	163.53	
	Sundry Income	<u>164.95</u>	
	<u>Total Income</u>		50,428.48
	<u>Expenditure</u>		
	Admin'n Services	4,457.34	
	Bank Charges	97.27	
	Equipment hire	4,068.35	
	Exhibition / Materials	10,700.37	
	Gas	143.73	
	Insurance - General	177.60	
	- Workcare	194.53	
	Maintenance	112.00	
	Phone	463.09	
	Photocopying	284.47	
	Photographic - Materials	144.30	
	-Services	206.78	
	Postage	227.33	
	Power & Light	2001.26	
	Printing	62.50	
	Professional Services	3,646.30	
	Salaries	24,784.50	
	Stationery	275.73	
	Sundry Expenses	846.80	
	Superannuation	1,016.77	
	Training/Work Experience	1,000.00	
	Travel	<u>277.35</u>	
	<u>Total Expenditure</u>		<u>55,188.37</u>
	<u>Deficit</u>		<u>4,759.89</u>

MELBOURNE'S LIVING MUSEUM OF THE WEST INC.

NOTES TO THE ACCOUNTS

1. Balance Sheet

Has been adjusted as at 31.12.92 to incorporate Koorie Garden Team Accounts due to final audit information not being available at time of preparation of 1992 MLMW Inc. annual accounts.

2. The following provisions have been taken to account.

- a) **Long Service Leave** - \$6,825.00
This provision covers liability for employees with more than five years service.
- b) **Sick Leave** - \$4,000.00
Deemed sufficient to cover liability at balance date

3. Stock - Publications

Has been revalued to take account of old and slow moving stock

4. Stock - Work in Progress

Has been reduced with the finalisation of outstanding projects

The following pages are a selection of newspaper articles from 1993 about events relating to the Living Museum and about staff and members of the Committee of Management of the Living Museum past and present.

Creek friends meet

THE Friends of Skeleton Creek and Altona Bay Wetlands will hold their annual general meeting at the old Laverton school house, on the corner of Cameron Ave and Kiara St, Laverton, on Tuesday, June 29, at 7.30pm. There will be speakers from Melbourne Water and supper will be provided. Inquiries: 369 2915.

Cash for energy ideas

GRANTS of up to \$10,000 are available under the Local Energy Efficiency Projects scheme. Schools and community groups with ideas for projects which promote energy efficiency can get application forms from the office of Gellibrand MP Ralph Willis by ringing 687 7355. Applications close on Wednesday, June 30.

Weeding on the Range

THE Department of Conservation and the Friends of the Rifle Range will hold a planting, weeding and rubbish clearing day at the Rifle Range on Sunday, June 27, from 10am to 1pm. Enter via the Bayview St entrance. Tools will be supplied.



The gardening team which will be working on a Koori garden at the Living Museum of the West. They are (from left) Mathew James, Rob Drayton, Brett Barnett, Matthew Gristwood, Darren Broymom and Darren Writzand.

CITY OF FOOTSCRAY

Community Information

Ward Meeting Kingsville Ward

A meeting of residents of the area bounded by Westgate Freeway, New Street, Blackshaws Road and Stephenson Street is to be held at:

South Kingsville Senior Citizens Centre
43 Paxton Street
South Kingsville
7.30 p.m.

Thursday, 24th June, 1993

Ward Councillors and Council Officers will be at the meeting to inform and discuss with local residents issues, Council services and developments affecting the locality. The meeting is for local residents and will, therefore, concentrate on local issues. Transport can be arranged for residents requiring assistance due to age or disability. Enquiries to the Council Administration Office telephone 688 0200.

Ward Meeting North West Ward

A meeting of residents of the area bounded by Ballarat Road, Gordon Street, Cross Street and Russell/Argyle Streets, is to be held at:

Footscray Recreation Centre
Essex Street
West Footscray
7.30 p.m.

Thursday, 1st July, 1993.

Ward Councillors and Council Officers will be at the meeting to inform and discuss with local residents issues, Council services and developments affecting the locality. The meeting is for local residents and will therefore, concentrate on local issues. Transport can be arranged for residents requiring assistance due to age or disability. Enquiries to the Council Administration Office telephone 688 0200.

Temporary Road Closure

Nicholson Street at Droop Street (Street & Roads (Traffic) Local Law No 15 Division 3)

Notice is hereby given, that it is proposed to close Nicholson Street at the Droop and Hopkin Street intersection. The closure will be from 1st July for six (6) weeks to ascertain the effects on traffic movement in the area.

ROB SPENCE
CHIEF EXECUTIVE

Town Hall
Napier Street,
Footscray

Postal Address
Victoria 3011
PO Box 58
Footscray

Telephone
(03) 688 0200
Facsimile
(03) 687 7793

AUSTRALIA WIDE

Started in April '93 Network liquor/soft drink. No selling, no stock, just buy for yourself and receive a large monthly cheque.

Growing fast get in early.

RING 687 1411

SLATE CENTRE
MELBOURNE

Free sealer for all jobs over 20m²

Slate Tiles from **\$9.50** per metre

AMPLE FREE PARKING AT REAR OFF RACECOURSE RD Cnr Flemington and Racecourse Rd, North Melbourne

Ph: 328 3544

*On supply of full fixing

Garden recalls a Koori history

By Renae Kerr

If you could step back in time to the days before Europeans settled the West, you'd find a very different kind of landscape.

Yam daisies, or mumongs, carpeted the ground with their bright yellow flowers, while a she-oak forest stretched from Braybrook towards Manbyrnong along the Maribyrnong River.

Footscray was known for its beautiful fields of bluebells. And Williamstown's marshy coastline gave way to kangaroo grass and rock-strewn plains stretching towards Werribee.

An exciting gardening project just begun at the Living Museum of the West in Pipemakers Park, Manbyrnong, will enable people to see just how much the landscape has changed over 200 years.

Called "The History of the Land Discovery Trail", it is being built by a team of Koori gardening apprentices.

The trail will actually comprise five gardens, depicting the

history of the landscape as it changed through the Aboriginal, farming and colonial periods.

There will also be a 1950s garden with a migrant flavor, and a garden of the future.

People will be led from one garden to the next via a mosaic tile trail being designed by local artist Libby McKinnon.

It is envisaged that the mosaic design will include kangaroo prints, leading on to sheep and white men's prints, as it winds its way towards the future garden.

The Koori garden will have plants such as yam daisies, once a staple Aboriginal food; old man's weed, once used as medicine; chocolate lillies, pig face and native grasses.

The coordinator of the Koori gardening team, Jeff Walsh, predicts the garden should be complete in about six months.

Mr Walsh said a shepherd's

garden would feature a dry stone wall like those built from rocks by farmers.

It is this period which saw the disappearance of the yam daisies, eaten by the sheep, and the introduction of boxthorn and purple artichoke thistle now so common.

Lavender and rosemary will be among the cottage plants to be planted in the colonial garden, while the migrant garden will see grapevines dripping over a trellis or, maybe, or lemon tree, Mr Walsh said.

The garden of the future is still being designed. But Mr Walsh envisages it will reflect the move back to maintenance free native plants.

A call has also gone out for building materials to complete the garden. The group need bluestone pitchers for the colonial garden, rocks for the shepherd's fence and tiles.

Anyone who can help out can phone either Mr Walsh or Ms McKinnon at the Living Museum of the West on 318 3544.

International delights are coming soon to the Paris end of Footscray . . .

Gourmet Breads

Gourmet Finger Foods

Mouthwatering Pastries

Barkly Bakery

583 Barkly St, WEST FOOTSCRAY. 689 8334
(near Cnr Barkly & Russell Sts)

Briefly

Photo show at museum

THE Living Museum of the West, Van Ness Ave, Manbyrnong, is holding an exhibition of photos of Koori women. The museum is open Monday to Thursday, from 10am to 4pm, and on weekends from 11am to 5pm. It's closed Fridays. Inquiries: 318 3544.

Yoga for women

THE Heathdale Community Centre, 57 Kookaburra Ave, Werribee, has classes including yoga, fabric painting and techniques for women who want to go back to school. Inquiries: 741 2233.

It's the Western Times for classifieds

ALTONA GATE SHOPPING CENTRE

Shopper's Diary

CHARITY AUCTION A SUCCESS!

On behalf of the Altona Gate Shopping Centre Management and Retailers we would sincerely like to thank all the organisations and people who made this worthwhile fundraising event possible. A special thank you to Angry Anderson and John Williams our Auctioneer and all of our special guests.

Over \$10,000.00 was raised through the auction for the "20th Man Fund" to help the homeless and people in distress within our community.

Also congratulations to the following \$100.00 Shopping Voucher winners: B. You - Nth Altona, B. Birmingham - Laverton, F. Herman - Newport, A. Perry - Altona Nth, M. Hargraves - Altona Bay, D. Lundberg - Altona Meadows, P. Bucci - Laverton, V. Crowley - Williamstown, N. Barnes - Newport.

Angela Russo

Centre Marketing Co-ordinator

\$2.5m indoor sports centre on the way

☐ Sunshine will have new basketball and netball associations when a \$2.5 million indoor sports and recreation centre is built in Braybrook

By Deborah Gough

BRAYBROOK will get a \$2.5 million indoor sports and recreation centre comprising four basketball courts, a creche, gymnasium and club facilities at Kinder Smith Reserve in Lily Street next March.

The centre, to be run by Sunshine YCW, will be built with funds from Sunshine Council, Sunshine YCW and Federal and State Government grants.

It will be built beside existing clubrooms for sporting clubs which use the Kinder Smith Reserve.

The new gymnasium, with weight and exercise training facilities, will be able to accommodate up to 60 people at a time.

The basketball courts can also be used for volleyball, netball and badminton.

The new centre will have a multi-purpose room for community groups to use as a base.

Sunshine YCW spokesman Mr John Hedditch said schools from as far away as Deer Park had embraced the idea of the new centre in Lily Street.

"With all the cuts to school sports funds, we think it will really take off. There is nothing like this anywhere nearby. Schools are going to

places like the Westgate Leisure Centre," Mr Hedditch said.

Kinder Smith Reserve is behind Chisholm and St John's Colleges and not far from Sunshine East Primary School and Christ the King Primary School and Secondary College.

"Some centres, like Altona, are empty during the day but are buzzing at night.

"But I don't think our centre will have that problem because of the support it has received from local schools. We want school groups to be using the centre all day," Mr Hedditch said.

Sunshine YCW will try to create basketball and netball associations in Sunshine.

Mr Hedditch said Sunshine YCW wanted to start teams playing in local halls so when the centre opened in March there would be a competition already running.

He said the new centre would be particularly appropriate for teenagers and adults, since some existing basketball centres, such Footscray YMCA, had stopped competitions for teenagers older than 14 years.

The centre will employ five full-time workers and about 20 part-time referees and umpires.

The push for the centre came after a particularly wet season.

Anyone interested in being a part of the Sunshine Basketball Association or the Sunshine Netball Association, or being a player in a senior, junior, mixed, mid-week ladies or after school competition can contact the Sunshine YCW on 312 5554 (AH).



KOORI Gardening Team apprentices (from left): Darren Braybon, Matthew James, Brett Barrett, Matthew Gristwood, Darren Witzand. Picture: SHARON CAVANAGH.

Kooris learn horticulture

☐ Need a job done? Call the Koori Gardening Team

SIX Koori apprentices, based at Pipemaker's Park and employed by Western Region Group Training, are undertaking specialised training in horticulture.

Under the name of the Koori Gardening Team, they have worked at the Melbourne Botanical Gardens, Werribee Park, Pipemaker's Park, Westfolds Park in Templestowe and in Deer Park.

The apprenticeship program has been running for 14 months.

Apprenticeship co-ordinator, Mr Jeff Walsh, said: "We have the same six people we started with and there have been no drop outs."

The apprentices go to school one day a week, with 12 other horticulture apprentices, to

learn the technical side of the trade, and spend four days a week putting it into practice.

"We want to get to a stage where there are enough Kooris in this trade for Kooris to feel happy working in it. We hope from this program we can get Kooris to train other Kooris," Mr Walsh said.

He is more than a supervisor, according to one of the apprentices, Brett Barrett, 24, of Sunshine.

"You couldn't ask for a better boss. If we've ever got problems after work which aren't related to work, Jeff is always there to help you. He's really great," Mr Barrett said.

For Mr Barrett, the apprenticeship has highlighted how little he

knew about his own backyard garden. "I've learnt a lot about plants and lots of different landscape techniques but I've still got a lot to learn," Mr Gristwood said.

Darren Braybon, 19, moved from Queensland three years ago. He was doing a CES course in horticulture when he applied for an apprenticeship.

Matthew James, 20, of Kealba, had been gardening for the Aboriginal Advancement League before he began the apprenticeship.

The sixth apprentice is Robert Drayton, 27, of Broadmeadows.

"ALPINE ADVENTURES"
SNOW SKI
 Pick up at your door, Weekend Accom, Sauna, Spa Fac, Meals, Ski Hire.
\$189
 Ask for Andrew on 741 2728 or 018 534 208

MELTON CINEMA CENTRE
 McKenzie St. Melton 743 7717

ALL SESSIONS \$6.00 FAMILY TICKET SUNDAY \$18
 EVERY DAY 2 ADULTS 2 CHILD

ALL ADMISSIONS - ALL SESSIONS

NOW SHOWING **Aladdin**

Michael Douglas in 'FALLING DOWN' (M)
 Last showing 9.15pm 23.6.93
 'MADE IN AMERICA' (M)
 Commencing 24th June
 'HOT SHOTS 2' (PG)
 Commencing 1st July
 DENNIS THE MENACE (PG)

TERRACOTTA GARDEN POTS
 Cheapest in the West
 Garden Seats, Ornaments, etc.
OPEN 7 DAYS
 10am-6pm
 101 MCINTYRE ROAD, SUNSHINE
 Phone: 312 1801

Accommodation problem!
 Why not come have a look
HONEY HUSH CARAVAN PARK Melb

Located only 15 minutes from the heart of the CITY. New deluxe units and on-site caravans. All with EN SUITE and fully self-contained lounge and kitchen, double bedroom and separate children's bedrooms, fully furnished, cooking facilities, crockery and cutlery.

We also supply you with all necessary linen, pillows, blankets, bath towels, etc. tea and coffee making facilities for your convenience. TV.

2-4 persons from \$100 to \$135 per week, short or long term or overnight stay. (Short term no bond required). INSPECTION WELCOME

Worth a Look
 6 Leakes Road, LAVERTON NORTH
 (Opposite Westside Hotel)
 Phone (03) 369 2253

1 MONTH UNLIMITED USE TONING SESSIONS,
\$99 ONLY

PLUS BONUS FREE OFFER
 1 MONTH AEROBICS POOL, SAUNA AND SPA
 TOTAL VALUE \$369

Give yourself that hour or two each week - firm up sagging muscles, increase your flexibility, relieve tension and lose inches! You will experience fast results with no muscle strain, sweating or fatigue. You will begin to notice the many benefits of improved posture and circulation.

360 9559
WESTGATE SPORTS & LEISURE COMPLEX
 Cnr Grieve Pde & Doherty's Rd, Altona Nth

EATMORE MEAT
 Hampshire Rd
 SUNSHINE
 312 2033

Renowned for Excellence
 Famous for Value

THIS WEEK'S SPECIALS

Crumbed Yearling Schnitzel \$5.99 kg
 Middle Rashers of Bacon \$5.99 kg
 Crumbed Lamb Cutlets \$4.99 kg

Ph: 312 2033

286 HAMPSHIRE RD, SUNSHINE

SUNSHINE WESTERN SUBURBS Advocate
 260 Barkly Street, Footscray
 Phone: 688 5522

EDITORIAL
 Editor: Laurie Schwab
 Chief of staff: Peter Strachan
 Chief photographer: Colin Moss
 Journalists: Elisabeth Tarica, Chris Evans, Neil Branch, Max Wilson, Deborah Gough
 Photographers: John Edwards, Sharon Cavanagh, Wayne Hawkins

RECEPTION Tina Skinner

ADVERTISING
 Group Sales MGR (Western Div): Karen Mills
 Advertising Manager: Norm Holloway
 Advertising Contact: Robert Wilson, Naareeda Colvin, Motoring: Imelda McNeil.

CLASSIFIED/TRADES
 TRADES 1pm Monday
 MAXI CLASSIES 1.30pm Tuesday

To place your classified advert
 797 0211
 8.00am-8.30pm, Mon-Thurs
 8.00am-5.30pm, Friday

The Sunshine Advocate is delivered free throughout Braybrook, Sunshine, Maidstone, St Albans, Deer Park, Ardeer, Kealba, Kellor Downs, Maribyrnong, Taylors Lakes, Avondale Heights, East Kellor and Kellor.

Printer and publisher Andrew James Berry, of 592 Hampton Street, Hampton 3188 for Syme Media Pty Ltd A.C.N. 004 765 164 at the Age, 250 Spencer Street, Melbourne 3000. ★ Recommended and maximum price only.

CAB AUDIT CIRCULATION
 54,230 COPIES WEEKLY

THE ADVOCATE, WEDNESDAY 23 JUNE 1993 - PAGE 3

LEARN TO PLAY
"THE" CARD GAME
BRIDGE
10 WEEK COURSE
 Commencing 25th August

Come and play Bridge every Monday and Wednesday night.

ESSENDON BRIDGE CLUB
 Phone Karol on 374 2328 or Judy on 370 7967
NOW TO ENROL

CLEARANCE SALE
CHAIN-SAWS
BRUSHCUTTERS
LAWN MOWERS

HUNDREDS OF SAWS TO BE CLEARED

Saws to suit the handyman, contractor or tree remover.

Professional Scrub Cutters
 with Nylon Head and Saw Blade
 Normally \$1699
 Reduced to **\$699**
 Includes FREE extra SAW BLADE
 8-tooth blade, 4-tooth blade WORTH \$90

Straight Shaft Brushcutters
 with Nylon Head and Saw Blade
 Normally \$699
 Reduced to **\$375**

Special Brushcutters
 with Nylon Head
 Normally \$499
 Reduced to **\$250**

Petrol Mowers
Most makes and models
At prices never to be seen again.

ALL STOCK AT UNBELIEVABLE PRICES
 Sale starts today 7.00 am till 9.00 pm
OPEN 7 DAYS A WEEK
 UNTIL ALL STOCK SOLD!

McKENZIE'S CHAIN-SAWS
 25 Claude Street, East Bentleigh
 (Melway Map 78 C6 Cnr Warrigal Road)
TEL: 579 5688 or 570 6245

NEWS

Sally's story

THE imagery and life stories of artist and author Sally Morgan have become an intrinsic part of the cultural revolution which has captivated Australia since Aboriginal people began to express their culture through the arts.

The artist's discovery of her Aboriginal heritage and her expression of this in art is being celebrated now in the form of an exhibition of print stories at Melbourne's Living Museum of the West in Manlyburn until September 12.

The exhibition, which began last Monday but will officially open tomorrow at noon, portrays six years of Sally Morgan's life.

Her book, *My Place*, published in 1987, opened doors to a new understanding of Australian Aboriginal life.

The museum's Aboriginal outreach program officer Miss Kylie Freemansaid Sally's painting and printmaking technique, distinctly individual, portrays brilliantly-colored, simple, child-like figures combined with complex patterns.



● Melbourne's Living Museum of the West's Aboriginal outreach program officer Miss Kylie Freemansaid with one of artist Sally Morgan's prints which is now on show at the museum.

"Her works are visual narratives and express a spiritual link between Aboriginal people and the land, while also linking her life story with stories handed down from generation to generation of the ways of life of an ancient and highly-developed culture.

"Many of Sally's prints in this exhibition are the very last remaining in their edition so this show will give people one of the last opportunity's of appreciating and supporting the most unique and exciting art movement in Australia's history," she said.

Tenancy service has hours cut now

THE Western Region Tenancy Support Service has had to close its doors on Thursdays due to government cuts.

Based at the Deer Park Community Information Centre, the free tenancy service will be available on other weekdays in a variety of languages including Arabic, Croatian, Serbian, Macedonian, French, Greek, Spanish, Turkish and Vietnamese.

Assistance provided relates to starting a lease, tenancy agreements, additional conditions, rent increases-arrears, repairs, sub-letting, ending a tenancy, bond money and landlord visits.

The centre is at shop 95a Deer Park Central Shopping Centre, Neale Rd, or phone 363-1811.

The easy way to higher grades

KUMON

FREE ENROLMENT NOW!

MATHEMATICS, ENGLISH & JAPANESE TUITION.

From 21st July-31st August 1993

If your child is not reaching his or her full potential, Kumon offers after school tuition programmes catering for all ages and abilities. Each child progresses at his or her own pace. Develops concentration, confidence and interest in school.

35 years of success, with over 600 centres throughout Australia, 2 million students world wide.

KUMON INSTITUTE OF EDUCATION
(03) 696 1566 OR TOLL FREE **(008) 80 5984**
 3/40 Albert Road, South Melbourne, VIC 3205

EXTENSIONS

Individual designs to suit your home and budget

- SUNROOMS
- VERANDAS
- PATIOS
- CARPORTS

OUR PROFESSIONALLY CUSTOM DESIGNED EXTENSIONS OFFER YOU MANY YEARS OF ENJOYMENT AND WORRY FREE LIVING.

ESTABLISHED 24 YRS
 Housing Guarantee Fund Ltd
BUILDING CONFIDENCE
 REG NO 16480

PHONE NOW FOR FREE ON SITE DESIGN & QUOTE
Tel: 885 5544

APOLLO ARCH P/L
 A.C.N. 006 826 900
SERVICING ALL SUBURBS

Budget Priced

Built-in Robes \$499
 1800 x 2400 mm Installed
 We measure, make & install custom built wardrobes in over 40 variations including 60 door finishes and colours of doors. Mirror also available.

Replacement Aluminium Windows \$353
 1800 x 1200 Basic installation included
 Complete with Flyscreen & keyed lock

Shower Screens \$179
 Installed
 Front only in your choice of any stock colour frame with obscured wired safety glass

- Award winning design
- Sliding & pivot doors

Security Doors
 Special Offer
FREE Triple lock
 with every 126 security hinge door purchase
 10 year guarantee on grille.

Insect Screens 5 FOR \$99

Reivers INDUSTRIES
 Thomastown 23 Macquarie Drive 464 2999
 Eitham 37 Bridge Street 439 8937
 Forest Hill 334 Springvale Road 894 2341

AMPLIMESH SHARKURITY GRILLE
 AUTHORIZED DEALER
 For After Hours Service til 8.30pm
 Cyril 729 2313
 Geoff 467 6983
 Leon 435 0947
 Jim 439 7681

We come to you!
 For a FREE no obligation measure and quote Day or Evening

Quality Aluminium & Glass products for your home.

Backyard to the future

WHAT will the future suburban front yard look like? If the Living Museum of the West project, The History of the Land Discovery Trail, is anything to go by it would cover an area of 26 metres by 20 metres.

The word for their futuristic suburban front yard is a xeriscape, derived from the Greek word 'xeros' meaning dry and the word 'landscape'.

It takes the average Western Suburbs front or back yard and incorporates into it hybrid and indigenous plants, promoting the practice of water conservation.

It would be a model and living example of available water conservation methods with special reference to the Western suburbs.

The futuristic suburban garden or xeriscape is one of five distinct environments to be developed as part of the discovery trail project at Pipemakers Park, Van Ness Ave, along the banks of the Maribyrnong River.

The environments are an aboriginal garden, shepherd's camp, colonial garden and Hume Pipes' workers' garden as well as the xeriscape.

The aboriginal garden will incorporate a murrumbidgee oven; a large earth mound for cooking yams, and an environment of endangered native plants and trees (food sources). The story-telling area will be a feature of the garden.

The shepherd's camp will comprise a dry stone wall, a typical shelter of the time,

the continuation of the native plant theme and the introduction of exotic species.

The colonial garden environment will be linked to the site's previous use by the Meat Preserving Company, with bluestone paving and the creation of a colonial garden growing herbs used in the preservation of meat.

The Hume Pipes' workers' garden will incorporate an orchard and vegetable garden, a pergola and grape vines, simple outdoor furniture with mosaic terrazzo flooring. This garden will reflect the ethnic background of the workers employed by Hume during the 1950s and 1960s.

The project aims to tell the history of the land which comprises Pipemakers Park. The

project relates to a specific area, namely the concrete slab on the site which provides a base for the proposed landscape and artworks.

The History of the Land Discovery Trail will integrate and interpret the history of the land that is now Pipemakers Park and will be a link offering a major route and easy access through five distinct environments.

It will connect with the three major trails in the Park (meat, pipe, nature) and with the display material in the visitor centre, adding to the relevance and unity of the interpretive process within the park.

The History of the Land Discovery Trail will be an extension of the nature trail and provide disabled peo-

ple access to an environmental and heritage project. The five distinct environments will also be linked by a series of minor paths with access from the major route.

The purpose of these internal paths is to direct people through the gardens without damage to the landscape and artworks and allow them more personal access to the gardens.

The discovery trail and its paths will be made of mosaic. Artist Elizabeth McKinnon, she designed the mosaic mural in Kinnear Street outside Footscray City Secondary College and the History of Footscray mosaic panels in the Nicholson Street Mall, will design the trail mosaics.



Artists Elizabeth McKinnon shows Footscray MLA Bruce Mildenhall the complexity of her mosaic work. Photo: Joseph Mastroianni.

West snakes for museum display

THE Living Museum of the West, Pipemakers Park, Maribyrnong, will use \$2500 from the State Government to produce a display on indigenous fauna in the Western Suburbs with emphasis on snakes and reptiles.

Museum staff will work with the Victorian Herpetological Society to produce the display which could include other wildlife.

The display will then be available on loan to local community centres and libraries.

Minister for Conservation and Environment Mark Birrell said the money was available through the project grants program designed to provide funding for conservation projects in Victoria under the Department of Conservation and Natural Resources.

"The range of projects which have received grants in both urban and rural areas reflects the concern that many Victorians have for their environment and their willingness to pitch in and do something about it," he said.

"In most cases these grants are for community-based projects. They are vital in fostering and encouraging a genuine conservation ethic in local communities.

"The projects also give members of the local community a great deal of personal satisfaction and an opportunity to be involved in projects important to their community and to Victoria as a whole."

Mr Birrell said the State Government's commitment to practical conservation work and the battle against land degradation was reflected in many of the funded projects.

Mother of God Primary School

67 Blanche Street, Ardeer 3022



Enrolments for children — Preparatory to Year 6 who wish to attend Mother of God School in 1994 will take place from Monday, 21st June, 1993 until Friday, 25th June, 1993.

For further information or an appointment, please contact the school office phone 363 1734

WERRIBEE CITY CHURCH

'The Place To Be!'
• YOUTH GROUPS • HOME GROUPS
• WOMEN'S GROUPS SERVICES

Sunday 10am Worship service
6.30pm Gospel service
Thursday 7.30pm Prayer & healing meeting
ALL WELCOME
(PRAYER MEETING) PRAYING FOR THE SICK, OUR CITY AND THE NATION.
WERRIBEE CITY CHURCH
AH: Pastor Graham Harris 742 7404
Pastor Peter Curtis 741 9672
Pastor John Vaccarallo (052) 78 2551
61 Russell St, WERRIBEE. 741 5899



FREE

ELECTRICAL APPLIANCE SAFETY CHECKS

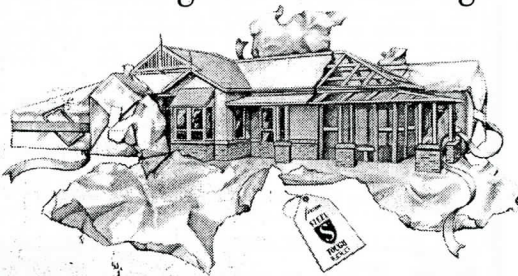
This Friday, 25th June
11am to 7pm

— at —
KEILOR DOWNS SHOPPING CENTRE



State Electricity Commission of Victoria

Steel Tough has the Package!



Building your own Home - Cabin or Castle ...

Whatever you require, Steel Tough Homes has the package. Steel - frame home packages allow you to build better, and with greater precision for less than ever before - they won't warp, twist, shrink, or provide a meal for insects!

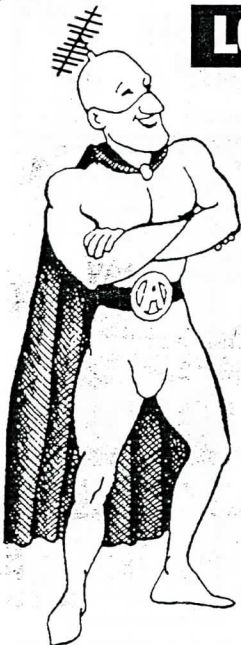
Whether its a week-ender or the home of your dreams, a Steel Tough home package is the modern, quality way to build.

Find out more on how you can build a better home for less - Come in and see us now!

23 Mephan Street Footscray • Telephone 03 317 7466



LOWEST PRICES — HIGHEST QUALITY



\$129

LIMITED OFFER AS SEEN ON TV

FULLY INSTALLED HIGH GAIN TV ANTENNA (CHANNELS 2, 7, 9, 10, SBS AND FM)

Our Melbourne antennas are the best because the elements are made from extruded aluminium tube. Sadly, most suppliers and competitors use 'Roll Formed' elements which have a split down one side, making them flimsy and easy to break. Made in Australia, our extruded tube models are more than three times stronger. They will last. Antenna installations are now about \$100 cheaper than a year ago - thanks to Mr Antenna. We now employ 65 people more than this time last year, and install more than half of Melbourne's antennas. A success story rate in today's times.

The now famous \$129 High Gain Antenna Special is the best bargain. It receives 2, 7, 9, 10, SBS and FM radio and in most areas will drive 3 TVs. For \$129 we install the antenna on a 1.8 fascia mast and run a low-loss coaxial down the cavity wall (if possible) to a skirting or wall outlet. We provide the TV lead, tune your TV and video and guarantee the system for three years.

MR ANTENNA

\$129 SAFETY SWITCH (EARTH LEAKAGE CIRCUIT BREAKER)

FULLY INSTALLED PLUS FREE ELECTRICAL WIRING TEST

Rec. 4423

WHAT YOU NEED
Sadly some competitors are misleading the public on what type of safety switch is needed and charge a higher price than you need to pay. We have outlined below a simple check list.

- (A) Most homes only require a "2 Pole" safety switch ("4 Pole" if your home has 3 phase power).
- (B) Most homes require a "40 AMP" current rating (80 AMP is only required if you have heavy duty mains). Therefore, 80% of homes require a 2 Pole 40AMP device. At Mr Antenna, however, our price of \$129 fully installed included the larger model if needed.
- (C) All equipment available on the market is required by law to meet very high standards set by the SEC. No one brand is better than another.
- (D) The only "extra" you should be charged for is if the safety switch physically will not fit in your switchboard and therefore must be mounted in an approved weather-proof enclosure adjacent to your switchboard.

BOOKING HOTLINE
131 149
LINES OPEN 7am-10pm
7 DAYS A WEEK



Railway warning

THE Western Region Commission has urged councils to speak on a proposal to build a new railway line through the western out suburbs.

WRC executive director Fred Maddern said he was surprised by the lack of concern shown by some councils.

The Federal Government has proposed a standard gauge railway line through suburbs including Footscray, Williamstown and Werribee.

It is part of the One Nation statement in which the government pledged to build the national freight rail network by 1995.

"It will happen," Mr Maddern said

By Renae Kerr and Claire Sutherland

this week. "And it amazes me the amount of people who never do anything until it's too late."

Only the Werribee Council has campaigned against the proposal.

The council has lobbied the State and Federal Governments for at least two overpasses to cope with the increase in rail traffic.

According to a Public Transport Corporation report, Werribee's rail crossings could be closed for 25 minutes in the hour if the proposal goes ahead.

He invited the public to listen in on a WRC meeting to be held tonight (Wednesday) at 6pm in the Werribee Council chambers.

Coordinator of the One Nation Project, Ted Williams, will answer the WRC's questions on the issue.

The announcement of the rail network had raised fears in Footscray that this could affect trade in the Yarraville shopping centre.

With a strip shopping centre already cut in half by the Werribee line, Mr Maddern warned the building of a national line alongside would lead to greater hold-ups at the railway gates and possibly drive away trade.

But a report tabled by the Foot-

scray Council this week said the Public Transport Corporation had allayed these fears.

A PTC letter to the council said the new railway line would be diverted through the Tottenham goods yard, then double back to Newport via the exiting freight line running through Brooklyn and Spotswood.

But the report warned councillors that this created a new set of problems and affected the amenity of Spotswood and Kingsville residents.

It would lead to greater traffic delays at the Francis and Kermit St level crossings, and increase noise in the area, the report said.

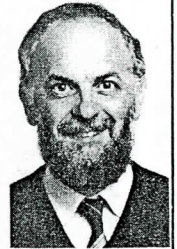
NEWS IN BRIEF

New mayor wants Pt Gelli report

NEW Williamstown mayor James Farrell has promised to push the State Government for the Point Gellibrand risk report, which is still unavailable two years after being completed. Cr Farrell said the report, which looks into chemical storage and transportation at Point Gellibrand, should have been available long ago. The Department of Business and Employment revealed last week its release is still months away. The new mayor is a 34-year-old tree surgeon from Victoria Ward.

Parnis in chains

SOUTH Ward councillor George Parnis has taken over the mayoral chains in Sunshine. Cr Parnis was elected unopposed at Monday night's statutory meeting of the council. The mayoral allowance was set at \$18,000. New deputy mayor Irene Shand will get \$4000 and councillors will each receive a \$3000 allowance, in line with last year. Cr Parnis, a 49-year-old public servant, said the council would continue to com-



George Parnis

mit itself to increasing efficiency and reducing charges during his term.

Duane leads Altona

VETERAN councillor Danny Duane is Altona's new mayor. Cr Duane replaces Les Crofts. Cr Steve Clement will be his deputy. It will be Cr Duane's third stint as mayor. He joined council in August 1976. Cr Duane handles the environment portfolio.

Bowler mourned

THE Spotswood Kingsville RSL Bowling Club lost a friend with the recent death of women's section president Valda Rush. She was 54. "She was full of life and loved her bowling," husband Frank said. Valda had been a keen lawn bowler for 30 years. She was a three time runner-up in club pairs events, in 1984/85 with Inez Sparks, 1987/88 (Betty Tomlinson) and 1992/93 (Raelene Portingdale). She's survived by Frank and daughter, Leanne. Frank is the president of the men's section.

Fire: boy charged

A 12-year-old boy was charged with arson following a house fire which caused \$10,000 damage to a house in Laverton on Saturday morning. Meanwhile, vandals caused \$1000 damage to a house under construction in Werribee on Sunday morning.

600 see uni

MORE than 600 people attended an open day at the Werribee campus of the Victoria University of Technology recently. The visitors ate 500 icecreams made by food technology staff and helped themselves to 500 helium balloons distributed by staff. Entertainment included performances by the Vietnamese Language School of Werribee dance group, face painting and skateboard demonstrations. The winner of the VUT poetry competition was announced. Helen Dougherty, of Werribee, won \$100 for her poem, "Recycling".

A bent comic

STEADY Eddy, the self-proclaimed bent man of comedy, will be at Forge's of Footscray's record department from 12.30pm tomorrow (Thursday). Steady Eddy, who has cerebral palsy, will be in the West as part of an Australian tour to promote his new video, Ready, Steady, Go. He'll be available to sign copies of the video, which includes songs like, "With Her I Don't Dribble".

Coode revisited

A MEMORIAL to mark the second anniversary of the Coode Island disaster will be held outside the chemical storage depot this Saturday (August 21). The Hazardous Materials Action Group has organised the event. It will be held on the corner of McKenzie and Coode roads, Footscray, at 1pm.

Moomba Monster

LAST week it was reported that commercial art firm Big Fish "created" the Moomba Monster known as Frilla. In fact, the monster was designed and built by Spotswood company Mother's Art and repainted by Big Fish for last year's Moomba Festival.

Life's a ball when you're 90



Old wingmen never die, they just keep handpassing... Joseph Mather shows his style with the Sherrin.

Picture: CAMERON TANDY.

FORMER Williamstown and Yarraville footballer Joseph "Alex" Mather celebrated his 90th birthday last weekend.

Mr Mather, who lives in Rye, was thrown a surprise birthday by 60 family and friends at the Altona Bowling Club on Saturday night.

His sons, William and Alexander, live with their families in Altona North.

Despite his advancing years, Mr Mather is as "fit as a fiddle" and

By Steven Milne

has a "marvellous memory", according to his family.

"I eat plenty, drink a bit now and again," Mr Mather said.

He spent five seasons with the VFA Seagulls, between 1926 and 1930. He was mostly a wingman, but played some games in defence.

"I was a middle-of-the-field job," Mr Mather recalled. "I was

never a champ, in and out of the side.

"(Then coach) Jack O'Brien wiped me off the list half-way through the (1930) season. I joined Yarraville (in 1931) but I couldn't get interested and drifted off. That was it."

Mr Mather grew up in Maryborough, but moved to the West after getting a job with the railways at Newport.

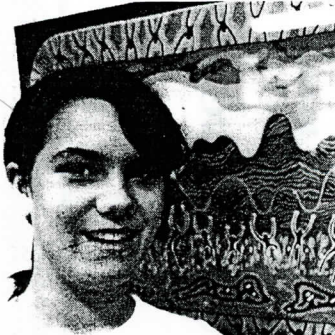
He joined Parkside Football

Club where he played under-age football. The muggies then played in a local YMCA competition and Mr Mather captained a premier-side in his second year with the club.

He spent the 1924 and 1925 seasons with Williamstown Juniors before graduating to senior ranks.

Mr Mather married a western suburbs girl, Rita Vickers, in 1930. The pair were married for 57 years until her death six years ago.

This trainee leads by example



Aboriginal perspective... Kylie Freeman next to one of the paintings at the latest exhibition at the Living Museum of the West.

SUNSHINE'S Kylie Freeman hopes to be an inspiring example to Aboriginal youth.

She has made it into the finals of the Victorian Trainee of the Year award.

Kylie, 17, was nominated by the Living Museum of the West, where she has been working as an office trainee.

She is one of 28 finalists from 3000 nominees. The award is made by the Federal Government's Department of Education, Employment and Training.

Even if she doesn't win it's still a wonderful achievement for a girl who hated school and couldn't wait to leave.

By starting an office traineeship through the Western Region Group Training Scheme, Kylie has discovered

By Renae Kerr

skills she never knew she had. Museum director Olwen Ford describes Kylie as "management material" and praises her ability to show initiative and organisational skills well beyond the requirements of her traineeship.

Ms Ford said she was especially happy that Kylie had made it to the finals, "because you don't hear enough about Aboriginal achievements".

The museum recently held a photographic exhibition. Kylie did the paperwork and organised the catering for the launch.

"She's got great organisational ability, has a sense of the whole and keeps things running

smoothly," Ms Ford said. "We say she knows how to manage the managers."

Kylie said she liked working life, especially at the museum, because "it relates more to life than school".

This week Kylie has been helping organise an exhibition of colorful paintings and prints by Aboriginal artist Sally Morgan, also known for her book "My Place".

The exhibition was launched at the museum this week and runs until Sunday, September 12.

The museum is in Van Ness Ave in Pipemakers Park, Maribymong (near Highpoint shopping centre). Inquiries: 318 3544.

Greenpeace warns: lead in children

By Renae Kerr

YOUNG children in the West are likely to have higher blood-lead levels than children in other regions. This is the belief of Greenpeace spokesman Matt Ruchel, who has been campaigning to have lead levels in petrol reduced.

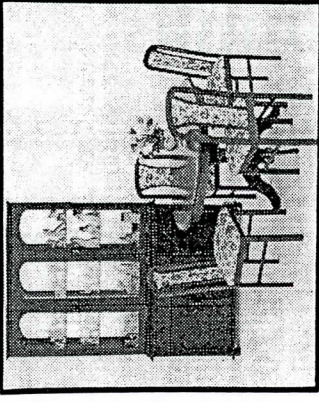
Mr Ruchel said the greater concentration of heavy traffic and industry in the West increased the amount of lead emitted to the atmosphere.

He said levels were highest along busy roads such as Ballarat and Geelong roads or the West Gate Freeway.

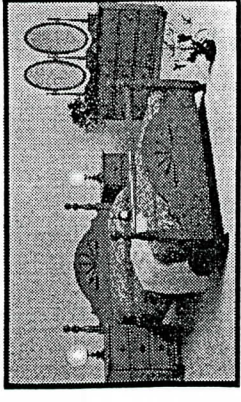
High blood-lead levels have been linked to impaired intellectual development in young children. While adult bodies can expel lead breathed in or ingested, young children's bodies cannot.

Alex's
Discount Furniture
30-36 IRVING ST, FOOTSCRAY 687 5959

Elegance at affordable prices



All prices heavily reduced
6 months Interest FREE
Terms.



FREE Pillow & Mattress Protector with each bed.
FREE Delivery

BEDDING WORLD

25 IRVING ST
FOOTSCRAY
687 4792



Industrial archaeologist Gary Vines (front) is teaching apprentices to uncover the West's history. Also pictured are David Baird, Lily Simic, Deanne Glenn and Kathy Jeffries.

There's history down under

By Renae Kerr

WHAT can hand-blown broken glass, crumbling bricks, twisted coils of wire and rubble, reveal about the past? Quite a lot, according to industrial archaeologist Gary Vines from the Living Museum of the West.

Mr Vines has been using this seemingly useless debris to piece together some of the West's industrial history. The material has been unearthed near the

dig a three-metre-wide by metre-deep hole to uncover some of the area's riverside history.

Only a few centimetres below the surface they came across their first clue - an old floor which Mr Vines said probably belonged to Joseph Raleigh's boiling-down works.

The State Government bought the site in 1977, and transformed it to a park run by Melbourne Water.

Mr Vines said he hoped that as the group dug deeper they might find a lower stone floor from a demolished factory, or some artifacts from the original meat-works.

The site later became a meat preserving works, before the

MAILED

TOUR

STOP PRESS

Man lurks near school

A MAN tried to lure a nine-year-old girl into his car in Campbell St, Laverton, last Thursday (June 17).

The girl was walking home from school at about 3.35pm when the man, in a yellow Fairlane, asked her to get into the car.

The girl had walked past the car in Bellin St, Laverton.

The man followed her in the car to Campbell St.

The girl ran home but remembered three digits in the car's registration.

The numbers are 689, probably in that order. It is believed they were Queensland number plates.

Contact Snr Det Jim Pearson at the Werribee police on 742 9442 with any information.

Bowlers mourn Geoff Dooley

WILLIAMSTOWN resident Geoffrey Dooley died last week of a heart attack at the age of 53.

Mr Dooley was born in Richmond but had lived in Williamstown since he was eight years old.

The service was conducted at St Mary's church in Cecil St, Williamstown, by Father Kevin Smith.

Mr Dooley was a committee member of the Williamstown Bowling Club. There

was standing room only at the church and the bowling club where the wake was held.

Mr Dooley was a member of the bowling club for 20 years.

He played junior football for the Newport Football Club as a child and was still a club supporter.

The president of the bowling club Ron Cahill said the funeral was a "lovely tribute to a nice fellow".

Mr Dooley worked at Kemcor Australia.

ABC man dies

A BIG crowd of mourners attended the funeral of Footscray's James Bryce McRoberts, who died suddenly last week aged 62.

Mr McRoberts had lived with his wife Norah in West Footscray for 34 years.

Many of those who attended the service at St Andrew's Uniting Church in Barkly St last Thursday were workmates from the Australian Broadcasting Commission.

Mr McRoberts was semi-retired but had worked at the ABC for 21 years. He was in charge of outside broadcasting.

Mr McRoberts also leaves behind three children - Paul, Louise and Alison.

STOP 'EM!
RING
THE ALARM MAN

STUART BALLANTYNE
397 2505 MOBILE 018 359 588

THE WESTERN TIMES

C.A.B. AUDIT (as from 30/9/92) 98,840

576 Barkly Street West Footscray, 3012 Phone: 689 7111

P.O. Box 94 West Footscray, 3012 Fax: 687 3827

Published by West Suburban Publications Pty Ltd., The Western Times appears every Wednesday and is delivered free to 98,840 homes in the Cities of Altona, Footscray, Sunshine, Werribee, Williamstown and parts of Keilor.

It has no connection with any other newspaper. The proprietors live and work in the western region.

DIRECTORS: Ron Coleman (editorial) and Julie Upson (company secretary)

EDITORIAL: Tony Wells (sub editor), Steven Milne, Renae Kerr, Mark Buttler, Claire Sutherland.

PHOTOGRAPHY: Tony Aitken, Cameron Tandy

ADVERTISING: Frank Magnabosco (manager), Representatives: Amanda Sims, Edward Dale, Val Micevski, Sue Morgan, Geoff Vine (Real Estate).

ART DIRECTOR: Michael Martin

CLASSIFIED ADVERTISING: Christine Bazzina, Sue Magnabosco, Rose Leocco, Dennis Augustinos.

RECEPTION: Carol Gair

ADMINISTRATION: Merrilyn Garth (Manager), Lucinda Kennedy, Elaine Farrugia (accounts).

PRINTER PUBLISHER: Julie Upson of 86 Yarra Street, Williamstown.

PROPRIETOR: West Suburban Publications Pty Ltd., 576 Barkly Street, West Footscray, 3012.

TYPESETTING & ARTWORK: Media Type Setting P/L 399 9755

MEMBERS OF -

MEMBER OF ASNA ALLIED COMMUNITY NEWSPAPERS INC.

Two stalwarts honored



Graham Johnson, OAM

By Renae Kerr

FOOTSCRAY councillor Graham Johnson says there's a lot more he could do to help Footscray's youth.

But that's not to say he hasn't done a lot already, an effort which was acknowledged in this year's Queen's birthday honors list.

Cr Johnson was awarded the Medal of the Order of Australia for his service to youth and the community.

The award acknowledged his years as senior leader, then vice president and now president of the Footscray Youth Club in Hoadley Cr.

His association with the club goes back to his own youth when he regularly visited the club.

Back in those days he said there were lots of activities and lots of volunteers to help out.

So he feels guilty that the 100 young people who learn wrestling, boxing, basketball or calisthenics these days don't have the same variety and opportunities to have fun.

The problem is that most people are too busy these days to volunteer their time, Cr Johnson explains.

They simply want to drop their kids off somewhere to be babysitted, leaving the supervision and organisation to the same few faces.

He laments that a Cambodian, Laotian and Vietnamese group which started at the club suddenly fell through when its leader lost funding to run it.

Or that a Polish young people's group collapsed at the last minute.

If he could get more volunteers, Cr Johnson said he could "really make that place tick" by organising all sorts of activities, including dances.

"I can understand why kids today hang around the streets. They've simply got nothing to do," he said.

"It's been my bugbear in Foot-

scray that we've never really addressed the youth issue properly. We could do a lot more for the kids around here."

A councillor for the past five years, and last year's mayor, Cr Johnson says he enjoys serving the community in any way he can.

"My philosophy is that it's a pretty poor show if you can't do something to help somebody else," he said. "I like being involved with people and the community. My parents were the same."

Cr Johnson is red, white and blue Footscray.

He grew up in Footscray, got his first job as a gardener on the council (where his father and brother worked), married a local girl and played in the Hyde St and then the Footscray-Yarraville City Band.

Policeman

Impressed by another brother who'd joined Footscray police, he joined the force and stayed in it for 32 years.

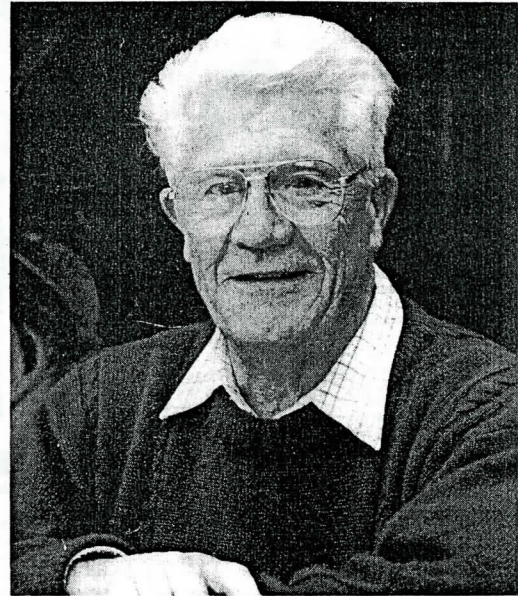
"I started at Russell St, then went to Victoria Dock, then spent my time making it back to Footscray. I went to Williamstown, then Newport, then Kingsville, Yarraville, Footscray then back to Yarraville station."

He sits on committees or is involved with Footscray State Emergency Service, Yarraville-Seddon Bowls Club, Footscray Rotary, the Footscray-Yarraville City Band, the Red Shield and the Red Cross Calling appeals.

With his 59th birthday coming up he says it's too late to think about ever leaving Footscray. Nor would he want to.

"The people here are unique, you ask anybody who lives or works here," he said.

"They may struggle, but they're honest people who pay their way. And the community spirit is something special."



Walter Eacott, OAM

By Claire Sutherland

WHEN Walter Eacott received the letter about his Medal of the Order of Australia, he thought he was being asked to nominate someone else.

Mr Eacott, who has lived in Werribee for 26 years, was surprised by his honor in the recent Queen's birthday list.

Mr Eacott was nominated by his friends at the Probus Club of Werribee, which he founded.

Probus clubs are similar to Rotary clubs, but their membership is restricted to retired people.

Mr Eacott received his award for service to retired people and to the community.

He has worked with people from both ends of the age spectrum over the years.

He was a scout leader for four years, and helped organise scout gang shows.

The former policeman also served as an honorary probation officer.

His role was to keep young offenders on the straight and narrow and help them find jobs.

As the executive director of the Western Region Commission from 1978 to 1986, Mr Eacott initiated a young apprentices' scheme which today employs about 200 young people.

The scheme involves placing young people

Australian Retired Persons' Association.

He advised retirees about investments, superannuation and pensions.

He is also a member of the Retired Persons of Werribee group.

Mr Eacott was Werribee Citizen of the Year last year.

"I wouldn't be doing all these things without my wife's support and I feel she shares in this award too," Mr Eacott said.

Mr Eacott's wife Jean is an organiser of the Probus Club and was involved with the scouting movement.

MICHAEL'S

OPEN 9-6PM MON-THU. 9-7PM FRI. 9-5PM SAT.

Black Douglas \$18.99	Johnnie Walker Black Label \$39.95	Rebel Yell Bourbon \$20.95
No Limit	Stolishniya Vodka 1L \$27.95	
Keo Brandy \$15.99	Chateau Yaldara Tawny Port \$3.99	Luigi Cavalli Lambrusco \$3.99
Wine Casks 4lt \$4.99 Bert's 5lt \$7.95	New Carlton Gold 4.9% 2 doz \$3.99 750ml	Rosemount Chardonnay \$9.95
CHEAP Vic't, Fost, Melb, Carl, 2 doz. stubbies \$21.50	BEER Eagle Blue 2 doz. stubbies \$12.99	Fosters Special Bitter 2 doz. stubbies \$14.99
Tooheys 2 doz. stubbies Red Classic \$18.99	Blue Gold \$13.80	Crown Lager 2 doz. \$29.99

CASH & CARRY ALL WELCOME
127-131 BALLARAT RD, MAIDSTONE
317 9507
FREE OFF STREET PARKING

DIVORCE & SEPARATION

Before your rights are affected contact:
Leanda Parsons 397 1300
Kerry Townsend 398 2222

WILCKENS & ROCHE
BARRISTERS·SOLICITORS
43 Ferguson Street,
Williamstown
50 Pier Street, Altona

HEATHGLEN LODGE

RESPITE

AND LONG TERM ACCOMMODATION
RESPITE - for the RESIDENT
RESPITE - for the CARE GIVER

* Serviced 1 & 2brm Apartments
* 24 Hour Care and Emergency Call Service

748 6600

Glendale Court, Werribee
HEATHGLEN RETIREMENT VILLAGE
ACN 005 264

An error of judgement

Turn Around

by Ian Hickingbotham
Melton Uniting Church Minister



A PLANE taxied onto the runway at Washington's National Airport.

The passengers were strapped into their seats and waiting for take-off, but the weather was not cooperating. The runway was slushy, the Boeing 737 was ice-laden and the instrument panel warned of engine problems.

Four times the co-pilot reported conditions were 'not right' for take-off but the pilot ignored the warnings and decided instead to coax the plane into the air. He failed. Seconds after take-off, Flight 90 lost altitude, slammed into a bridge and crashed into the ice-covered Potomac River.

You might recall seeing pictures of the few struggling survivors being pulled from the water.

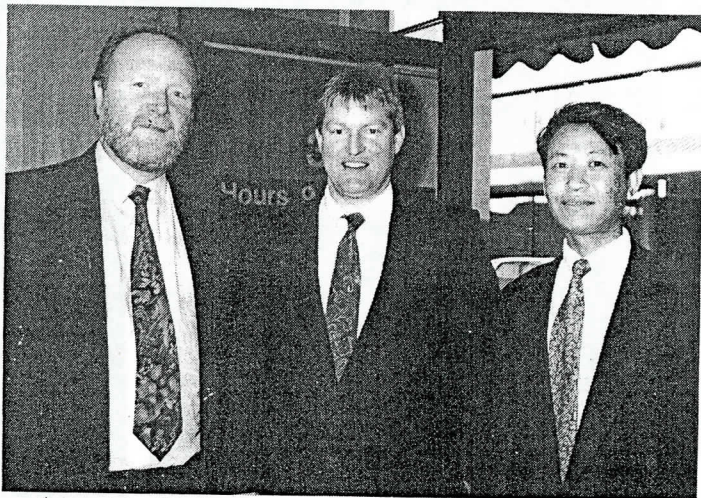
Investigators later concluded that two words could summarise the major reason for the crash of Flight 90: human error.

If we live our lives on the basis of what we think we can get away with, despite the warning signals, then we are always in danger of crashing.

In the Bible we read: 'Make level paths for your feet and take only ways that are firm. Do not swerve to the right or the left, keep your foot from evil.' (Proverbs 4:26-27).

Are you making your judgements on the basis of what you think you can get away with, or on the basis of what is right? Take care over the choices you make.

Begin a business



Footscray's Small Business Centre advisors, from left, Bob Newbold, Jim Hogan and Chau Ho.

MORE than 100 small businesses throughout the Western Region have received assistance from the Footscray-based Small Business Centre since it opened about five months ago.

The Small Business Centre, at 30 Leeds St, Footscray, is the first of its type in Victoria and was officially opened by State Small Business Minister Vin Heffernan last month.

Guests at the launch included Footscray MLA Bruce Mildenhall, local councillors and representatives from the Victoria University of Technology and Western Metropolitan College of TAFE.

A community-based organisation, the Small Business Centre is funded by state and federal governments and aims to advise small busi-

ness operators how to do better in their business.

It also provides valuable advice for those intending to establish a small business and don't know where to start. Advice can cover issues such as finance, marketing, business plans, tax and accounting.

It is staffed by business advisors Jim Hogan, Bob Newbold and Chau Ho and office administrator Beth Graham. Mr Hogan is also the Centre's training coordinator and can provide training using the resources of Western Metropolitan College of TAFE.

The Small Business Centre is open from 9am-5pm weekdays and later by appointment. Inquiries: 687 8883.

Jobs for mentally disabled

THE Westgate Community Initiatives Group project Worksupply Company will use a \$245,000 Federal Government grant to establish the first employment agency for people with psychiatric disabilities in the Western Suburbs.

The Federal Government approved \$70,440 for the Westgate Community Initiatives Group (WCIG) to establish the employment service for people with a disability and \$245,000 annually to enable the WCIG to operate the service.

"The Western Region is the most under-resourced area in Victoria in terms of employment services for people with a disability," WCIG convenor Alan Marr said.

"This funding begins to redress this imbalance as well as to recognise that with support our clients are motivated and very capable workers."

Worksupply is an employment agency which matches psychiatrically disabled people with employment.

Program manager Roz Girvan said Worksupply acted as a support to the client and to the employer should they need assistance.

"Sometimes employers just want to know that there is a back up should they need any advice."

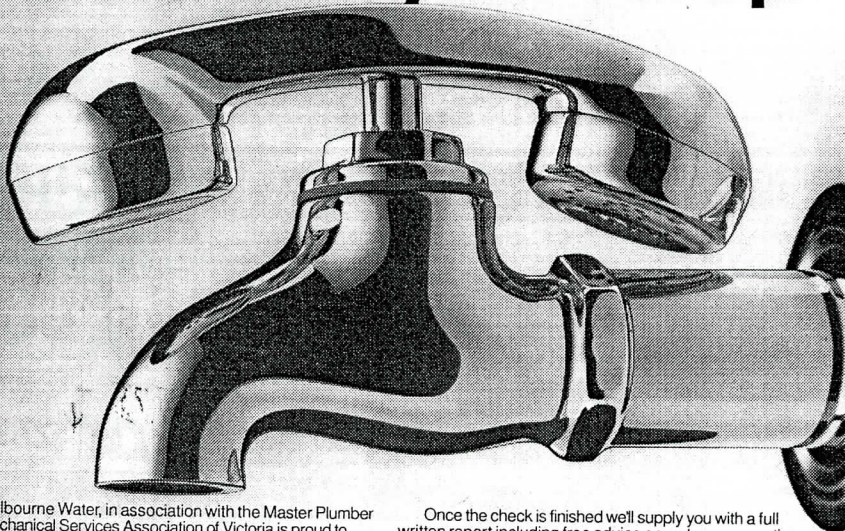
"The employees are the same and often it is their only work experience for a long time."

"We are there to provide assistance and support in an ongoing way as well as to recruit additional employment places."

The program has operated as a pilot for 12 months and funding comes from the Federal Department of Health, Housing, Local Government and Community Services.

Federal Finance Minister and Gellibrand MHR Ralph Willis officially announced the grant's availability at a luncheon at the Worksupply Company, 45 Ryan St, Footscray on June 4.

All you need to know about saving water and money is now on tap.



Melbourne Water, in association with the Master Plumber and Mechanical Services Association of Victoria is proud to announce Waterline, a new "water audit" service that can help you save water around the home.

For a set fee of \$47 (\$42 for pensioners & concession card holders), a qualified plumber will carry out a 20 point check including all your taps, hot water units and electrical appliances connected with the mains water supply.

Once the check is finished we'll supply you with a full written report including free advice on water conservation. We can even arrange for any repairs or installations that may be needed.

So if you need help on saving water, now you know who to turn to.

Waterline: 13 1025



Unlucky numbers

MELBOURNE West Province MLC Jean McLean claims the Kennett Government is more concerned with building a casino than caring for hundreds of mentally disturbed people in the community.

She said that about 300 people with mental problems were being turned away from the State's health services each week because the Government had dramatically reduced funding.

Mrs McLean said some of the people were rejected because of their aggressive behaviour or personality instability.

"This could lead to an increase in self-mutilation, assault, property damage and suicide," she said.

"To have so many seriously disturbed people turned away from help every week is unforgivable. It is courting disaster."

Why buy a new fridge when all you may need is a **NEW DOOR SEAL?**

20% DISCOUNT OFF REGULAR PRICE

MAKE THIS SIMPLE TEST NOW!
Is the seal on your refrigerator -

- Cracked or splitting?
- Brittle and hard?
- Swealing or with mould spots?
- Worn and floppy?

Problems such as Mould, Sweating, Iceing-Up, Motor constantly running can be easily rectified with a new door seal. It will also put a stop to uneconomical power surge, save electricity, and ensure your food will not spoil.

SURESEAL
DOMESTIC and COMMERCIAL REFRIGERATION SEALS
743 2281
(03) 364 2023

NOW SPECIALISING IN SEALING ROUND TOP FRIDGES

SLIDING SECURITY DOORS
Expertly made & installed.
\$229

ALUMINIUM PATIO DOORS & WINDOW REPLACEMENTS
Fully installed & made to measure
15% OFF

ONEWAY VISION SUPERMESH & DOOR REPAIR SERVICE AVAILABLE

DIAL-A-DOOR
SUNSHINE
364 8292

AUSTRALIAN INDEPENDENT DEALER NETWORK PL

SUNSHINE 284 Ballarat Road **364 8292**
MOORABBIN 240 Wickham Road **555 6677**
RESERVOIR 941 High Street **460 6677**

\$29 OFF PLUS FREE INSTALLATION

SAFETY \$189
SECURITY \$199
BLUECHIP \$199
HALFPANEL \$259
COLONIAL \$259
FEDERATION \$229
STEEL \$229

HEATGUARD ROLLER SHUTTERS
Total security & fully insulated
15-25% OFF

WINDOW GRILLES
To suit all types of windows.
\$69

SHOP AT HOME, OUR SECURITY ADVISORS CARRY A RANGE OF SAMPLES

AH: 018 327 978 St. Paolo Italiano AH: 018 357 040

Herald Sun

**MOTHER ON
MURDER
CHARGE: P3**

Monday, August 9, 1993.

NEWS PICTORIAL

City: Fine. 16. (Page 58) 60c



AV JENNINGS
\$200,000
HOUSE & LAND

GET SET FOR LIFE - PAGE 2



PLUS
\$5000
GROCERIES

**NEW COUPON
INSIDE TODAY**



MAI HO in the Council chambers at Footscray Town Hall yesterday. Picture: MIKE KEATING

Proud Mai's historic win

MAI HO, Australia's first female Vietnamese councillor, was "very excited, a little nervous and very proud" as she sipped champagne with Labor leader John Brumby yesterday.

Ms Ho, 30, a refugee to Australia in 1982, won by about 1500 votes in Footscray as voters in 114 councils around Victoria went to the polls.

REPORTS, Page 8

Hope of 1000 jobs

\$2bn CAR DEAL

AUSTRALIA is poised to win a \$2 billion export deal which could create an estimated 1000 jobs for car workers.

General Motors Holden's Automotive Ltd is understood to be near securing a contract to export up to 30,000 Commodores a year to the Middle East and Asia.

The contract, believed to be Australia's biggest manufacturing export deal, would provide a significant boost to the economy.

Forty top executives from around the world flew into Adelaide last week under tight security for a four-day meeting of the General Motors' International Strategy Board.

The delegation took up an entire floor at the company's Elizabeth manufacturing plant. The area was sealed and patrolled by security

By DEBRA READ and PAUL MOLLOY

guards for the first meeting of its type in Australia.

GM-H has not made any official announcement, but it is understood the secret deal was provisionally cleared to proceed to the final stage of the company's approval process.

A spokesman for the South Australian Premier, Mr Lynn Arnold, confirmed yesterday that he had been talking to Holden representatives and was

being kept informed of developments.

The spokesman said the Government was aware the vehicle manufacturing industry was making some important investment decisions.

If approved, the deal would be worth up to \$700 million a year for at least three years from 1997.

Holden's general manager of operations at Elizabeth, Mr Ray Grigg, said yesterday he could not comment on discussions by the international board.

CONTINUED Page 4

Mabo rifts

TENSION over the controversial Mabo land rights ruling flared yesterday as a Labor rift opened and two youths were bashed.

REPORTS, Page 2

THE Western TIMES

576 Barkly St, West Footscray, 689 7111 No. 572 Wednesday, June 30, 1993 40 pages 98,718 Circulation 30 cents

Spider bite did this

Picture: TONY AITKEN.

A BITE from a white-tailed spider has left Footscray's Peter Haffenden on crutches.

His bitten leg is in plaster and banded to cover a gangrenous sore.

His muscles ache from the poison which has affected the tissue. For a while, Mr Haffenden was taking pain killers to sleep.

Mr Haffenden is a project manager at the Living Museum of the West in Maribyrnong. He thinks he was bitten somewhere near his Footscray home about June 5.

"I thought I had a sprain because it was red and bruised and I was having difficulty walking," Mr Haffenden said. "There was no evidence of a bite so the doctor put me on crutches."

Instead of healing, the leg flared up a few days later. The doctor ordered Mr Haffenden to hospital.

"It was really swollen and hurting a

By Renae Kerr

lot," Mr Haffenden said. "It was also looking a bit funny. The skin had gone purple and soft, not like a sprain."

A doctor finally diagnosed a white-tailed spider bite, and told Mr Haffenden there was no anti-venom.

So now Mr Haffenden has to wait for his body's natural immune system to fight off the effects of the poison.

Mr Haffenden says he hasn't been fazed by the experience, feeling more amused than scared by the stories people have been telling him.

"I've had all sorts of cheery stuff, like how it won't heal for a year or how my leg might fall off," he said.

He was told that his skin surrounding the bite could turn black and fall off.

"That sort of stuff doesn't worry me," he said. "I grew up in a family that

wasn't squeamish. My brother was reptile keeper at the zoo."

Being bitten has actually come in handy at work, where colleagues have been making sure he doesn't strain his leg.

"They've been great, making me cups of coffee and all that. In fact, it's a lot easier to get things done," he joked. "But I still don't know what a white-tailed spider looks like."

The white-tailed spider is a common garden spider with a dark, cigar-shaped body about one centimetre long. It has a dull cream spot on the tip of its abdomen.

In the rare cases where the white-tailed spider bites a human, symptoms can include itchiness, swelling, ulceration or nausea.

But in 12 cases in the past 10 years, people have had severe gangrenous skin reactions.



A sorry sight . . . Peter Haffenden nurses his poisoned leg.

Where is Scoobedoo?



Happier times . . . Scoobedoo poses in front of the famous dog on the tuckerbox at Gundagai. With him is owner John Pidoto.

A WILLIAMSTOWN businessman has begun a desperate search for his dog after it was driven away by thieves.

"Scoobedoo" was in the back of his master's Toyota Hi-Lux utility when it was stolen from Williams St, Newport, on Saturday afternoon.

Scoobedoo's owner John Pidoto said he was still in shock.

"I just ran in to my late father's house to drop off a message. I was only gone about two or three minutes and when I got back the car was gone," he said. "I was so completely shocked I couldn't remember my rego number to give the police."

Mr Pidoto said Scoobedoo was a kelpie/whippet cross who had been the family pet for five years.

His disappearance has not only left Mr Pidoto sick with worry but upset his 11 grandchildren who dote on Scoobedoo.

"He's more their dog than mine," Mr Pidoto said. "He follows the kids everywhere and he's practically become the mascot for the Newport under-10s, where one grandson plays."

Mr Pidoto said his youngest grandchild was handicapped and this child had taken the loss the hardest, having become very attached to Scoobedoo.

"They're all missing him. But it's the little bloke who misses him the most."

Mr Pidoto is offering a reward for Scoobedoo's return and has alerted taxi drivers in the area. He runs Panther Tyres in Williamstown so has offered the drivers a new set of tyres.

"I don't care about the car, that's insured," Mr Pidoto said. "But what's happened to the dog? He could be anywhere."

Anyone with any information can phone Mr Pidoto at work on 397 1387 or at home on 741 3316.

INSIDE: • Motor Pg 10 • Tax Pg 13 • Dine Pg 14 • Holiday Fun Pg 15 • Homemaker Pg 16 - 17

VINCENT VERDUCI & ASSOCIATES
BARRISTERS AND SOLICITORS
44 BYRON STREET, FOOTSCRAY
(Corner Leeds & Byron streets)
PH: 689 4733
Pleased to help you with:
• FAMILY LAW • WORKCARE • PERSONAL INJURY
• CONVEYANCING • COMMERCIAL MATTERS

COONARA WOOD HEATERS **Carrier** CARRIER DUCTED HEATING
Air Conditioning SHOWROOM SALES
Free Stander and insert
4 WATTON ST, WERRIBEE 741 6277

WESTWAY AIR CONDITIONING HEAT/COOL & SERVICE SPECIALISTS
369 3908
Heating Kits from \$1,420 **brivis**
SHOWROOM: 77 TRIHOLM AVE, LAVERTON NTH. AH: 398 4315

Times Trades Crossword
Page 34
WIN \$50

Custom LAMINATING
We have installed 5 laminators to give you PROFESSIONAL results on any job.
From Business Cards to Wall Maps or that work-of-art.
1 Moore Street, Moonee Ponds
PHONE 375 3955
MON-FRI 7.00am-6.00pm SAT 9.00am-1.00pm

Levi's WAREHOUSE PRICES
WEST'S LARGEST RANGE
DOUBLE "C" JEANERY
NOW OPEN SUNDAYS
4 AVIATION RD, 10am-5pm
LAVERTON (Opp RAAF base) 369 4307

SEPARATION and DIVORCE
can affect your custodial rights, your financial affairs, your will, your tax and other aspects of your legal affairs. Talking to us early could save you from unexpected and/or costly mistakes.
Contact: Peter Berry
Accredited Family Law Specialist Phone: 397 2088
HANNIBERY, BOYLE & PARTNERS
BARRISTERS & SOLICITORS
85 Douglas Parade, Williamstown

MISSION STATEMENT

Melbourne's Living Museum of the West is a community museum which actively involves the people of Melbourne's west and others in documenting, preserving and interpreting the richness and depth of the region's social industrial and environmental history.

AIMS & OBJECTIVES

The purposes for which Melbourne's Living Museum of the West Incorporated is established are:-

1. To establish a permanent ecomuseum within the context of Melbourne's Western Region, a concept whereby the total community, its environment and its heritage are considered as part of the Museum, focussing the main emphasis on the people of the region rather than on artefacts, and operating from one or more fixed bases throughout the region.
2. To develop a greater understanding of the history and culture of Aboriginal and non-Aboriginal peoples and the environment of Melbourne's Western Region.
3. To record and present the history of working people in Melbourne's Western Region, up to the present day.
4. To involve the people of the region in the collection, research and presentation of this history.
5. To use a wide range of presentation methods, including exhibitions, video, publications, theatre, public events, and other participatory activities.
6. To be a multi-cultural museum.
7. To create a mobile museum service for Melbourne's Western Region.
8. To relate the historic sites and structures of the region to the story of the people of the region.
9. To develop a Heritage Resource Centre for the region.
10. To undertake linking and bridging activities with other groups, projects and institutions in the Western Region.
11. To act as a catalyst to development of ecomuseum activity in Australia.
12. To develop and promote community museum activity which is interactive and innovative.
13. To develop the techniques of presenting exhibitions and related activities as effective communication devices.
14. To undertake pilot projects in a number of areas within the ecomuseum context on an experimental basis.



