

Melbourne's
Living
Museum
of the West
Incorporated

1995
annual report



**MELBOURNE'S LIVING MUSEUM OF THE WEST
INCORPORATED**

ANNUAL REPORT

1995

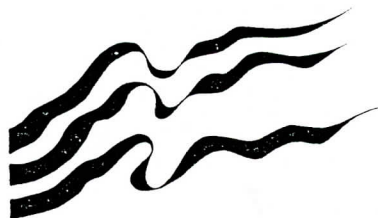
© MELBOURNE'S LIVING MUSEUM OF THE WEST INCORPORATED. 1996

Published by Melbourne's Living Museum of the West April 1996.

P.O. Box 60 Highpoint City, VICTORIA,3032

Telephone +61 (03) 9318 3544 Facsimile +61 (03) 9318 1039

Melbourne's Living Museum of the West Gratefully acknowledges the continuing support of Arts Victoria



ARTS VICTORIA

Cover illustration: Wayne Cooper driving the Koorie Gardening Team's new stealth mower bought to work on the City of Maribyrnong's northern parks and gardens maintenance tender won by the Team. The winning of this tender was the big news for The Koorie Gardening Team and the Living Museum in 1995.

Photo and Computer Graphics: Joe Guario

CONTENTS

PRESIDENT'S REPORT.....	5
COMMITTEE OF MANAGEMENT.....	6
OVERVIEW 1995.....	7
OPERATION OF A MUSEUM CENTRE.....	9
RESOURCE CENTRE.....	14
EDUCATION PROGRAM.....	15
RESEARCH.....	18
RESEARCH Consultancies.....	19
RESEARCH Consultancies & Training.....	21
OUTREACH.....	22
INTERNATIONAL OUTREACH.....	30
MARKETING.....	31
PUBLICATIONS.....	34
ADMINISTRATION.....	35
PROFESSIONAL DEVELOPMENT.....	37
KOORIE GARDENING TEAM.....	39
COMMENTS FROM VISITORS 1995.....	43
MISSION STATEMENT.....	44
FINANCIAL REPORTS.....	45
AUDITORS REPORT.....	45



Fred Maddern, President of Melbourne's Living Museum of the West, with Senator Barney Cooney at the launch of the Industrial Heritage Precinct Development, at Pipemakers Park, 11 October, 1995.

PRESIDENT'S REPORT

The Museum continues to be a hive of activity as a leading repository of the region's history. Over the past twelve months much has been achieved in developing partnerships between the Museum and our other key players.

Triennial funding from Arts Victoria has greatly assisted the Museum by providing a known funding base upon which to plan and implement a wide range of community projects. We are deeply indebted to Arts Victoria for their ongoing commitment and support to the Museum.

The recent State elections saw a change in the Arts ministerial portfolio when the Hon. Haddon Storey retired from Parliament. In his place Premier Jeff Kennett has taken on responsibility for the Arts. Melbourne's Living Museum of the West enjoyed a strong rapport with the Hon. Haddon Storey and welcomed his keen interest in our activities. His visit to the Museum in 1994 was a memorable highlight.

We offer our congratulations to Premier Kennett in taking over the Arts portfolio and hope our working relationship will be as enjoyable as it was with Haddon Storey.

Our partnership with Melbourne Parks & Waterways in the management of Pipemakers Park continues to grow. Driving into the park from Van Ness Avenue, the views of the river and surrounding parkland are quite beautiful. Your Museum is working strenuously with Melbourne Parks & Waterways to further improve developments and facilities in the park to make it one of Melbourne's premier tourist and historical destinations.

The ongoing development of the Koorie Gardening Team reflects greatly on the support given the Museum by Western Region Group Training. The Koorie Gardening Team has been a great innovation, a first in Australia and now identified as a role model for innovative activities by Koorie and Aboriginal communities throughout Australia.

Other support offered by western Region Group Training has greatly assisted the Museum with LEAP and JobSkills projects. To Graham Saville and his team at the Group Training Company we offer our heartfelt thanks.

While triennial funding from Arts Victoria has been an enormous help, the growth of the Museum with new and existing projects places a great strain on financial resources. With the museum now an established part of the region's life, community expectations are not always met by funding necessary to meet those expectations. Local government, the business community and the wider community should be fertile fields to support the Museum but alas, whilst vocal offers of support for Museum activities are loud and strong, they are not matched by dollars. I hope these groups will consider their commitment at forthcoming budget meetings and include the Museum in their community commitments.

In closing, may I thank Museum Director Olwen Ford and staff for their continued support. Their dedication to the Museum is a relationship which is more a labour of love, than an employer-employee relationship.

To the members of the Committee of Management, I express thanks for their contribution. The Museum is indeed fortunate to have a team of enthusiastic people at the helm, drawn from a wide range of community interests. Combined with the dedicated staff, they make up a formidable team at Melbourne's Living Museum of the West.

As in the year past, we shall in 1996/97 redouble our efforts in preserving and developing the custodianship of the region's rich and colourful history. In the attainment of this goal, we look forward to the continuing support of the community and members of Melbourne's Living Museum of the West.

Fred J. Maddern
President
Melbourne's Living Museum of the West

COMMITTEE OF MANAGEMENT

MELBOURNE'S LIVING MUSEUM OF THE WEST 1995

PRESIDENT

Fred Maddern

Footscray resident. Chairman, Management Committee, Western Region Group Training Ltd. Involved in many Western Suburbs organisations. Former mayor of City of Footscray and Executive Director, Western Region Commission.

SENIOR VICE-PRESIDENT

Peter Somerville

Owner and Cruise Director of Maribyrnong River Cruises. Footscray resident. Chairperson of WESTOUR. Founding member of Melbourne's Living Museum of the West. Award of Merit from the Royal Historical Society of Victoria

JUNIOR VICE-PRESIDENT

Marie Earle

Yarraville resident. Experienced member of many committees and organisations in Melbourne's west, including the YMCA and Yarraville Community Centre. Former councillor of the City of Footscray.

NOMINATED REPRESENTATIVES

Joan Bryans

(West Metropolitan Group of Historical Societies)

Jointly represents Altona with husband, Tom. Altona resident. Active in the Altona Historical Society and the Western Region Group of Historical Societies. Secretary of the Ulster Society (Melbourne).

Tom Bryans

(West Metropolitan Group of Historical Societies)

Worked at Commercial Polymers, Altona, until 1993. Altona resident. Active in Altona Historical Society and Western Region Group of Historical Societies. On church committees and the Ulster Society committee.

COMMUNITY REPRESENTATIVES

John Argote

Park Supervisor, Point Cook Coastal Park. Coburg resident. Spanish-born. Qualified in environmental management. Experienced in developing community participation. Interested in outdoor pursuits.

Judy Gleeson

Lecturer in Communication Studies (Faculty of Arts) at the Victorian University of Technology (St.Albans campus). Brunswick resident. Currently studying for an M.A. by research. Especially interested in museum communication.

Susan Jennison

Subject Librarian (Faculty of Arts) at the Victoria University of Technology (Footscray campus). Keilor resident. President of the Keilor Historical Society. M.A. in Public History.

Irene Shand

Former councillor of the City of Sunshine, Sunshine resident. Employed by the Australian Taxation Office. Member of the Polish community. Involved in a number of local organisations. and issues, including regional tourism.

CO-OPTED MEMBERS

Ian Marshall

Formerly manager, Technical Services, Explosives Factory, Maribyrnong. Developed a substantial archive there relating to that factory's history. Sunbury resident.

STAFF REPRESENTATIVE

Larry Walsh

Aboriginal Projects Manager, Living Museum.

EX-OFFICIO MEMBER

Olwen Ford

Museum Director, Melbourne's Living Museum of the West.

NOTE: Owing to local government amalgamations and the appointment of commissioners, representation by local government has temporarily ceased. We expect that this representation will be revived in the future.

OVERVIEW 1995

Our theme for 1995 was 'Striking a balance'. We sought to follow the Museum's aims and objectives as a community museum, while at the same time adopting a cautious approach to the development of commercial activities. We tried to achieve consistency in basic programs while extending our services and our networks in broader contexts, beyond the region.

We had a basic core team, based at the Visitor Centre, with a much larger team working in Pipemakers Park, under our auspices, through the JobSkills program and the Koorie Garden Team, in association with Western Region Group Training Ltd. At one stage we had over seventy employed people working with us or under our auspices, an important development in this time of such high unemployment in our region.

A key priority was to develop the physical environment of Pipemakers Park in co-operation with Melbourne Parks & Waterways, and with funding from the Department of Employment, Education and Training and the Australia Council. This was a preliminary step towards organising future programs of community activity in the park and was also a way of building up our resources to interpret Melbourne's western region, its history and its environment. All this was part of our development of a 'Museum Centre', operating in Pipemakers Park and using the whole park as an introduction to the region, not solely the Visitor Centre, one building within the park.

Notable steps in this process during 1995 were completing the 'History of the Land Trail'; undertaking extensive renovation work in the main bluestone building; planning possible works in the Top Factory and contributing to Melbourne Parks & Waterways' successful application for funding towards restoration works through the Government Buildings Fund. A JobSkills team of thirty unemployed people were responsible for the very substantial works which could be seen as the Museum's outstanding achievement for 1995.

The Living Museum and the Koorie Gardening Team worked hard at the task of earning money in the strongly competitive world of the 1990s. The Koorie Gardening Team won a number of contracts, including a major contract for the City of Maribyrnong, to carry out maintenance in the northern part of the municipality. The team are to be congratulated on their hard work and their growing reputation.

Gary Vines undertook a number heritage and archaeological consultancies including one, by invitation, to prepare an archaeological strategy for VicRoads. Peter Haffenden completed the OLMA project - developing tour packages in Melbourne's west. The Museum won a tender from the Department of Defence to undertake a cataloguing consultancy in relation to the archives at the Explosives Factory, Maribyrnong. Olwen Ford and other staff provided talks, guided tours and workshops



Olwen Ford explaining the 'History of the Land' to a group of secondary school students from Marian College, Sunshine.

and this brought in some modest income. The Koorie Gardening Team and the Aboriginal program *Brenbeal* were a means of developing opportunities for Aboriginal/non-Aboriginal reconciliation. An Aboriginal festival, funded mainly by Arts Victoria, included an open-air concert and an exhibition of work by the Koorie artist, Lisa Kennedy. The Koorie Gardening Team organised a Community Cultural Day and took part in an indigenous foods day organised at the park by Greening Australia. Three of the Koorie Gardening Team went to Canada, to a gathering of indigenous peoples.

The Museum agreed to auspice a Landcare Environment Action Program (LEAP) team of fifteen unemployed young people, who undertook an oral history project relating to the munitions factories in the area. We received substantial co-operating from the Department of Defence, who provided accommodation for the project over six months. Former staff and employees from the munitions factories co-operated in the project, giving interviews and lending photos.

Outreach and community involvement was also possible through the Museum's weekly radio show. This had three special projects during the year - energy awareness, 'Women of the West on the Air' and racism and young people. The Koorie Gardening Team also had a

segment on the show.

An innovative Museum venture involving young people was the 'Musicians in the Community Sharing Skills' project, co-ordinated by Christine Carley, while the 'Favourite Object' exhibition, organised by Peter Faber, our international student placement from the Netherlands, attracted interest from a range of people across the community.

The Museum's Resource Centre continued to attract research inquiries and benefited from cataloguing undertaken by George Cawley and a grant towards conservation of the photographic collection. Updating of our Collection Policy was necessary as part of our application for registration with the Museum Accreditation Program

Partnerships and networking were a crucial aspect of the Museum's operation in 1995, another way of striking a balance between our internal activities and our work as a regional museum. We thank all those who supported us and worked with us during the year.

Olwen Ford
Museum Director



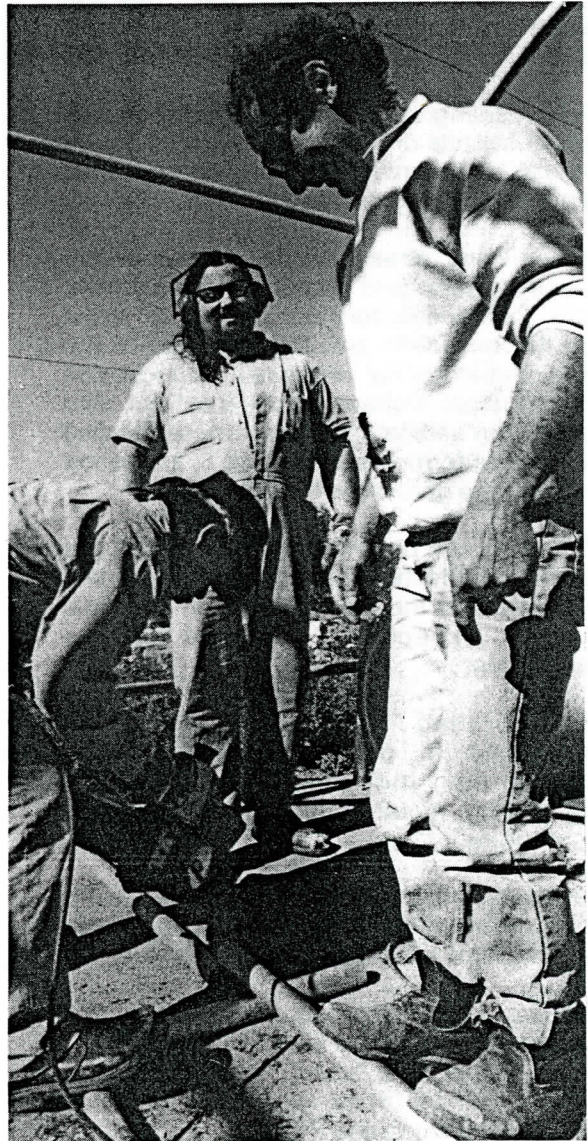
Aboriginal dance group Bama at the concert 'Nutbroki Ilbijerri' at Pipemakers Park in 1995.

OPERATION OF A MUSEUM CENTRE

During 1995 the Living Museum made substantial progress towards developing a regional interpretation centre in Pipemakers Park. This included substantial work on the main bluestone building and the final stage of the 'History of the Land Discovery Trail'.

The existing Visitor Centre was used for a range of activities from individual research inquiries to small meetings, workshops, conferences and several exhibitions. The Museum initiated informal discussions with Melbourne Parks and Waterways regarding use of the main bluestone building and developed proposals for conservation works in this building and the 'top factory'.

The Koorie Gardening Team completed construction of a walkway into the largest wetlands and planting of indigenous species in the adjoining area. This represents a major development of the Nature Trail, begun some years previously with assistance from Melbourne Parks and Waterways Community Grants Program.



Roger Najar and members of the JobSkills Team working on the History of the Land Trail

History of the Land Discovery Trail

The History of the Land Discovery Trail project was completed in 1995, after three years planning, design and hard labour. It has transformed the concrete foundations and ruins of the Hume Company's 8 foot pipe factory into a series of gardens which tell the story of how the occupants of this region changed the local landscape over time. This landscape resulting from thousands of years of Aboriginal occupation was drastically changed by European settlement from the 1830s, with the introduction of exotic plants, animals and artefacts to the western region of Melbourne.

The gardens illustrate these changes and aim to create an understanding of the historic environment and an awareness of the impact of people on the environment.

The project designer Libby McKinnon collaborated with Living Museum staff: Laurel Crampton, project horticulturalist and JobSkills training co-ordinator together with Roger Najar, structural designer /fabricator and training supervisor with input from Gary Vines, Olwen Ford, Larry Walsh and Peter Haffenden.

This project team set out to satisfy the goals associated with Stage 3 of the design of the 'History of the Land Discovery Trail'. This was possibly the most complex stage of the whole project:-

*Synthesising and drawing together the various strands of Aboriginal, industrial, multi-cultural and environmental history and addressing major logistical problems.

*Recognising afresh the dominance of the industrial space and character of the former eight foot pipe factory and coming to terms with its constraints and the existence of the remaining industrial structures, especially in the 'industrial archaeological area' but also through the vertical structures whose detailed design was formulated in Stage 3, in relation to four of the gardens within the trail.

*Providing an opportunity to incorporate industrial artefacts once produced on the site or relevant to the site's history in the final design, especially concrete pipes themselves.

*Incorporating input of people with experience in particular disciplines - horticulture, industrial archaeology, engineering, metal construction, landscape architecture.

*Interpreting the trail through signage and a brochure and utilising computer technology in the design for both signs and brochure.

*Ensuring community input to the design and implementation process from:

- people from a broad range of cultural backgrounds, from Australia, Africa, America, Europe and Asia.
- people with physical and intellectual disabilities.
- firms and institutions who contributed in-kind support through donations of materials and plants.
- people who had requested a creative hands-on play area for children within the design.

The project included some outstanding logistical problems in terms of design and some ingenious solutions. These included:

1. Vertical structures: how to develop designs for:-

*the erection of large (eight foot) pipes or pillars on a surface which was already mainly a thick layer of concrete, formerly the 'slab' or foundation of the former 'Bottom factory'.

*the transportation of heavy concrete pipes

*safe public access

This problem was solved through the designs of Roger Najar and David Landy. Roger's work included designs for equipment which moved pipes and which lifted pipes into place; the use of metal rods inside the eight foot pipes being erected; metal arches, trellis; fences; railings; seating.

2. Industrial archaeology: how to incorporate the remnants of old machine mountings, chutes, rails, into an aesthetically pleasing environment which was also safe for public access. The solution was to utilise recommendations and draft designs from the industrial archaeologist Gary Vines

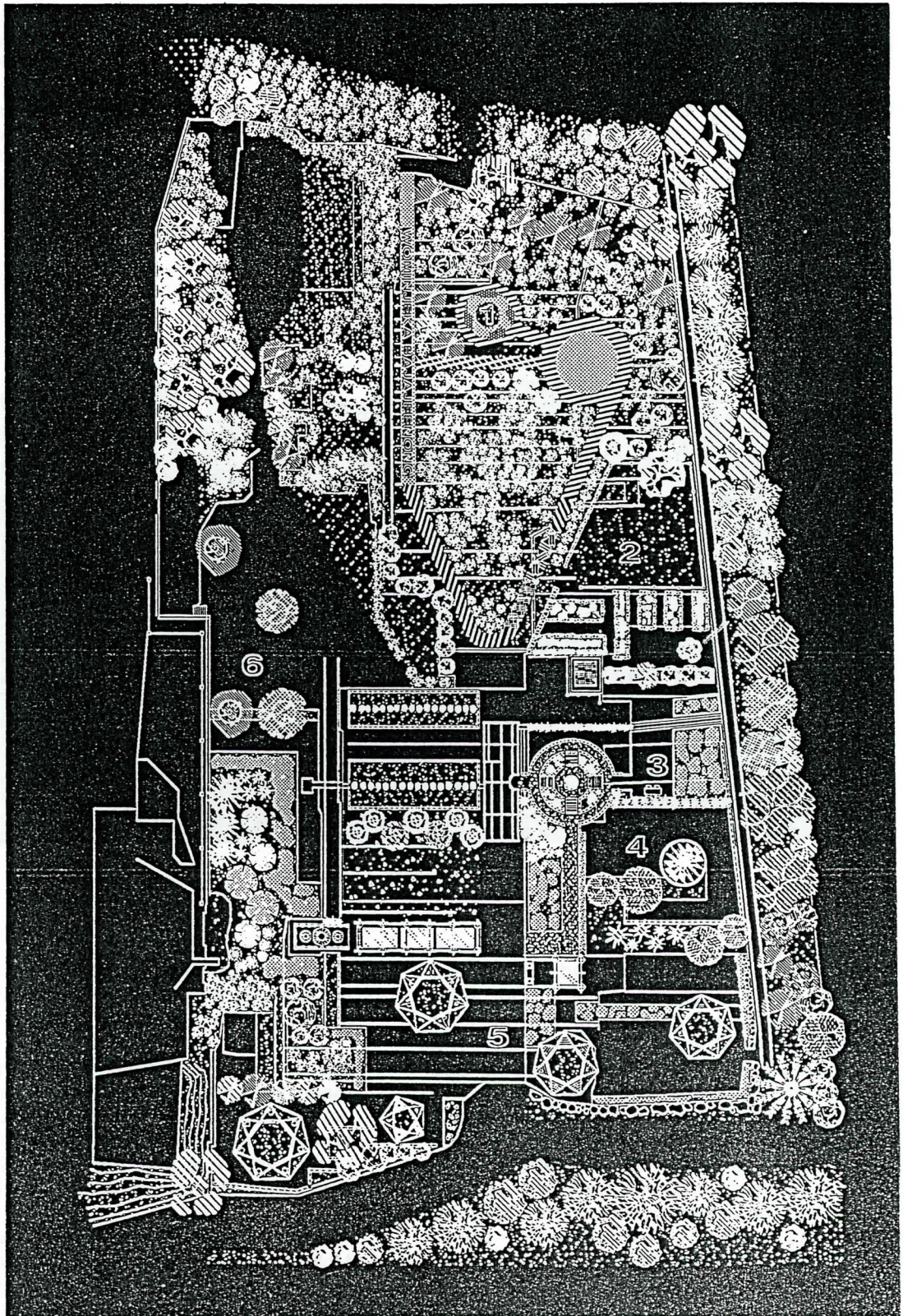
3. Landscaping: how to deal with large areas of concrete, without compromising the industrial character of the space and how to re-use materials left on site. This problem was faced by recycling materials constantly e.g. incorporating concrete rubble into the landscape design as a rubble rockery, using bricks from a neighbouring factory as the walls of the rose garden.

4. Horticulture: how to incorporate plants relevant to the themes of the design in areas of shallow soil and thick layers of concrete, including different depths and conditions. The solution was to follow designs suggested by Laurel Crampton, including use of tiny indigenous plants, as well as exotics at strategic points.

5. The involvement of people with disabilities in the design process. This was achieved through the 'Arts in the Park' project (see separate report by Helen Laffin) A ramp, designed by Roger Najar, assisted people with disabilities in access to the mosaic studio.

The design component was funded by CEAD, the Community Environment Art and Design section of the Australia Council and we thank them for their strong support over three years.

Elizabeth McKinnon



Plan showing the layout of the History of the Land Discovery Trail.

Industrial Heritage Precinct Development: JobSkills Project

In 1995 I was co-ordinating a large team of 30 people, working on two major areas of Pipemakers Park:- 1) the History of the Land Trail and 2) restoration work in the main bluestone building. The total JobSkills project was funded as a special project by the Department of Employment, Education and Training through Western Region Group Training Ltd. Melbourne Parks & Waterways gave in-kind support to the project.

Our working plan, based on Gary Vines' plan of the site which showed areas of broken ground, evolved from day to day as we discovered the

different depths and differences in the concrete. The gardens were defined by the character of 'The Slab' but evolved and changed as we grew to know its peculiarities. Every plant was considered for hardiness, lack of maintenance and drought resistance



The JobSkills Team 1995

Our JobSkills team was the third team to work on the trail. LEAP teams had completed Stages 1 and 2 of the project. Our brief included landscaping and planting on, over and around what we affectionately call 'The Slab'. This translated to varying depths and quality of concrete that had been the foundation of Humes' 8 foot pipe factory. Design often wavered from plant to site. Sometimes we broke up concrete to plant trees, e.g. lemons in the Hume Pipes Garden., or patched the existing concrete for straighter paths; as in the colonial vegie beds. Sometimes the concrete was broken and we were able to incorporate this into garden beds or plant trees. Other times we planted into 10-15cm of top soil placed onto concrete and surrounded with recycled materials - basically large pots, as in the Californian poppy bed.

primarily; as well as colour, shape and form. Indigenous plants were fairly easy, apart from not knowing if they would survive in areas of mass concrete

We planted a lot of 'herbs' that fit into all eras (apart from maybe Wurundjeri), being useful, herbaceous, tough and fragrant. Humes Pipe Workers were often from the Mediterranean region which is just the right climate and topography for their garden on 'The Slab'.

Greg Mead, North West Parks Area Manager of Melbourne Parks & Waterways, commented at the History of the Land Discovery Trail launch:

On behalf of Melbourne Parks & Waterways I'd like to congratulate the Living Museum on its superb achievement on the History of the

Land Trail. Melbourne Parks & Waterways is very proud of the association and partnership going back to 1987 with the establishment of the Park with Bicentennial funding. The result is the community now has a tremendous asset with recreation, environmental education and cultural events. One of the major pleasing key aspects which is a real model for us and a key to development of parks in the future has been the involvement of several LEAP projects and a large JobSkills project. This provided two things. It provides extra resources which would not be available to the precinct and also for many long term unemployed people it provides valuable work experience and training. I'd like to commend the federal government for the provision of the funding which has enabled this to happen. The partnership between Melbourne Parks & Waterways and the Museum has been a model of co-operation and consultation, one which Melbourne Parks & Waterways is very proud of and looking further to continuing and further developing. So on behalf of Melbourne Parks & Waterways and particularly the team at Maribyrnong River Valley Park we look forward to the future. I would like to congratulate all involved in the establishment of the Trail.

Des Gunn of Western Region Group Training also spoke at the History of the Land Discovery Trail launch about the JobSkills component of the project:

'We had a tremendous richness and diversity of cultures on this program, including many recent arrivals from the continents of South America and Africa and I think this program has given them a very valuable opportunity to learn a little bit about their new country and to learn a little bit of the heritage of this country.

There would be few places I think better for giving a new arrival an understanding of the history of this country than the Living Museum and being on this particular site on the History of the Land Discovery Trail so I think that's been a marvellous opportunity for those people.

But as I say it's a two way street and I think those people, the rich mix of people we've had on this program have also brought their own cultures and their own understanding and they have made a contribution themselves to the heritage of this site and hopefully they will go on making a contribution to the heritage of this nation as a whole. That's a very important aspect of the community partnerships that we've developed.'

The second component of the project was restoration of the large bluestone building in

Pipemakers Park. This included cleaning, repairing and white-washing of the very high bluestone walls, work on a safety rail and repair and patching of sections of the concrete floor. Fernando Cabrera and Jose Montes worked on the highest sections and did a substantial amount of the white-washing. Paddy Garritty, Martin Kingham and the Skill Centre lent scaffolding and a number of firms made donations of materials, including lime and cement.

The JobSkills participants learned a range of skills on the project and especially benefited from the teaching and supervision of Roger Najar in the area of metal work. It should be recorded that Roger generously provided equipment for the duration of the project.

Laurel Crampton



JobSkills Team members working on the construction of the History of the Land Discovery Trail 1995.

RESOURCE CENTRE

The Museum's Resource Centre has undergone some improvements, thanks to a small project funded by the National Library Preservation Grant...

Peter Scrivener, a former museum studies placement student with the Living Museum, carried out cataloguing and maintenance of the photographic collection. The project aimed to: 'Review and consolidate the preservation conditions and finding aids for the Living Museum photographic collection; to limit damage potential, eradicate risk factors and develop user-friendly systems for public access.' George Cawley, a *Life Be In It* 'New Works Opportunities' employee and Marcello Cavallaro, a museum volunteer, assisted in the project. As part of the project a computer catalogue was established, and a start made on cataloguing records.

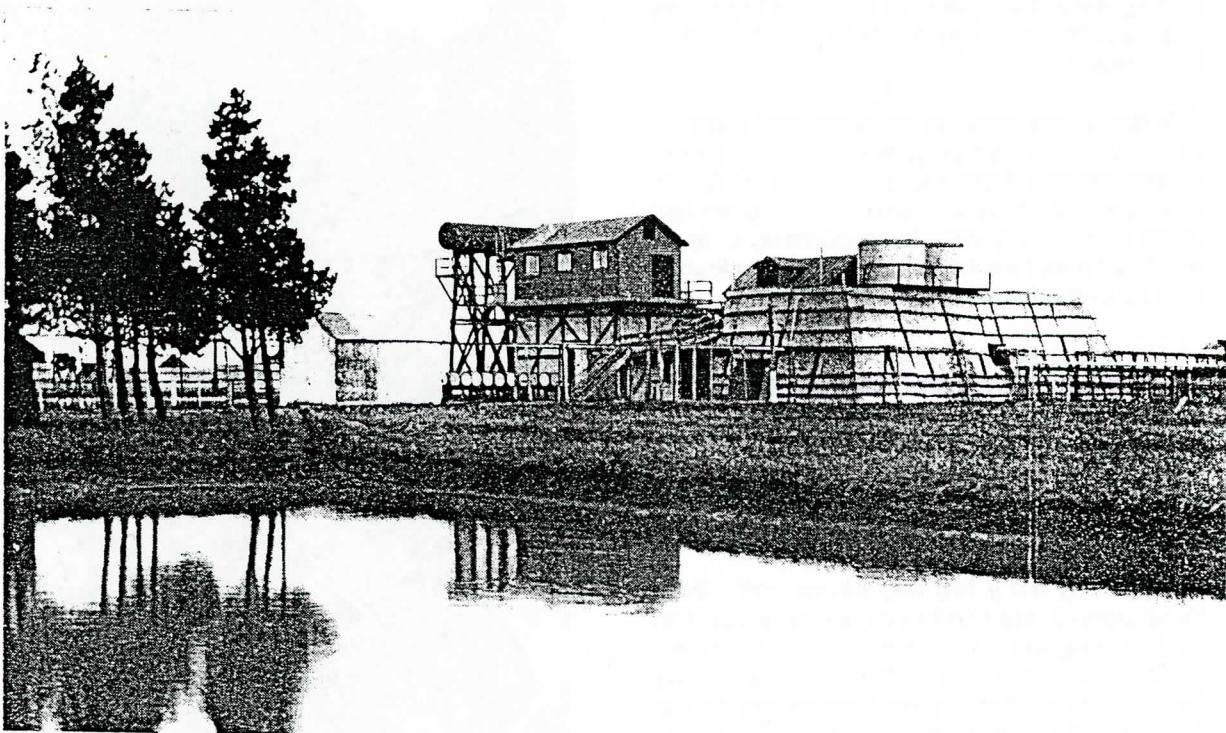
This catalogue complements the present paper-based system of summary sheets, and is parallel to the main resource centre catalogue which covers all other material - documents, oral history tapes, publications, artefacts, maps and plans, etc.

The museum has maintained a separate system for its photographic archive, because of the size of the collection (over 40,000 black and white and colour negative frames and colour slides) and the different storage requirements of the material.

Given resources to complete the cataloguing, the Museum will now be in a position to produce a readily accessible and easily used catalogue index of all its material. Volunteers have been progressively converting the existing cataloguing system to the computer system and have been catching up with the backlog of cataloguing, both the photographic material and general resources.

ICI Deer Park have donated a set of volumes relating to ICI's history and these are a valuable addition to the Museum's Resource Centre.

Gary Vines



Photograph of the Nitro Glycerine (Nitrating) Plant , Deer Park , 1920-22, donated to the Museum's Resource Centre by David Meale, site manager ICI, Deer Park. Reproduced with acknowledgment to the National Library of Australia.

EDUCATION PROGRAM

Talks, Tours and Workshops

The Museum continued to provide talks, guided tours and workshops for a range of visitors and for students at all levels, from lower primary to tertiary, charging a moderate fee for this service in some cases, the Museum prepared worksheets for use at Pipemakers Park by visiting schools in consultation with their teachers. Gary Vines gave talks to the Camberwell and Collingwood Historical Societies on aspects of Melbourne's industrial heritage.



Bau Ho, while education officer with the Museum, wrote an article on Pipemakers Park in the Science Teachers Journal.

Group bookings for talks and tours at Pipemakers Park included eleven primary school groups, fourteen secondary school groups, six tertiary groups, six LEAP groups, six retirement/community groups and two professional development sessions, a total of forty sessions not counting those given exclusively by Larry Walsh and five sessions given away from the Museum. The groups included:

Primary Schools: Upwey Primary School; Moonee Ponds Central School; Footscray Language Centre; Ascot Vale Special School; Ascot Vale West School; School of the Good Shepherd, Gladstone Park.

Secondary Schools: Eltham College; Maribyrnong Secondary College; St. John's College; Marian College; Ave Maria College; Swan Hill Secondary College; Northlands Secondary College, Footscray/Yarraville High School.

Tertiary Institutions: VUT - Education Support; Deakin University - Institute of Koorie Education; La Trobe University Graduate Diploma of Education; Monash University - Museum Studies & Cultural Policy M.A. course; Broadmeadows TAFE; Williamstown. Tourism group.

LEAP teams: Flemington Oral History; Wurundjeri Gardens Project; Western Young People's Independent Network; Munitions Oral History Project; La Trobe Valley Cultural Heritage; Chinese Oral History Project.

Retirees groups: Evergreens Group Westgate Community Health Centre; Bacchus Marsh Coaches; Bacchus Marsh PROBUS; Derrimut Daylight Masonic Lodge; City of Hawthorn Community Centre; Cumberland View Retirement Village.

Workshops: The Museum provided workshops for Scienceworks & Museum of Victoria Visitor Programs staff and hosted a meeting of the State History Committee.

EDUCATION PROGRAM

Arts in the Park Project

For some years now, the Museum has run a pilot environmental education program for people with disabilities. This has been co-ordinated by Helen Laffin. In 1995, Helen continued the program with an innovative project 'A Breath of Fresh Air - Arts in the Park', funded by the Community Cultural Development Unit of the Australia Council.

Melbourne's Living Museum of the West worker, Helen Laffin co-ordinated a project in 1995 called 'A Breath of Fresh Air -

'Arts in the Park' was an 11 week environmental arts and drama course for four groups of people with disabilities and their co-workers which resulted in the creation of a permanent mosaic in Pipemakers Park, Maribyrnong. This work has now shown that it is possible for people with disabilities to work with mosaics with support and produce an excellent design.

The designers of the mosaic were students from Rosamond Special School, students from Milparinka adult centre, students from the 18+ project from the Footscray Community Arts Centre and workers from Highpoint Industries.



'Arts in the Park' mosaic designers at work in the studio producing the mosaic for the 'Garden of the Future'. This mosaic is now a permanent feature in the History of the Land Discovery Trail.

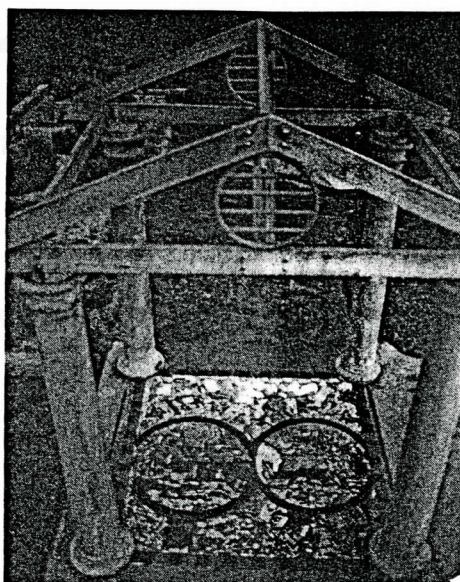
The aim of the project was to include people with disabilities in a community environmental art project, the History of the Land (also funded by the Australia Council CEAD) in Pipemakers Park. The project used the creative avenues of art, mime, music, drama and earth education as well as fun and games to assist the participants to generate their ideas for the design of their mosaic pieces. The participants decided to work as two groups to produce two large complementary mosaics rather than individual pieces which emphasises the enjoyment and enthusiasm that they had for this project.

Four environmental drama, music and art workshops were organised by Vox Bandicoot, a Victorian environmental theatre group and one earth education workshop was run by John Laffin, Earthcare environmental educator. Vox Bandicoot and John Laffin were employed to assist with the generation of ideas through creative and hands-on environmental education sessions in Pipemakers Park. The project was divided into 2 hour sessions run twice once a week. There were 10 people in each group.

Elizabeth McKinnon ran six mosaic workshops where the participants designed and produced the mosaic pieces. At the end of the project, the mosaic was installed in the Garden of the Future where it has a permanent place. A brochure has been produced explaining the History of the Land mosaic and participants and assistants from the Arts in the Park project have been acknowledged. The participants received certificates congratulating them on their achievements.

As well as having the mosaic on site, the Living Museum organised a display explaining the project and acknowledging all who were involved. It is set up in the Visitor Centre and will be kept on display whenever possible. The participants of the Arts in the Park project collected natural objects from Pipemakers Park and placed them in a treasure diary as memories of their involvement in the park.

EDUCATION PROGRAM



The finished mosaic.

These diaries are in the resource collection at the Living Museum. and can be brought out for those interested.

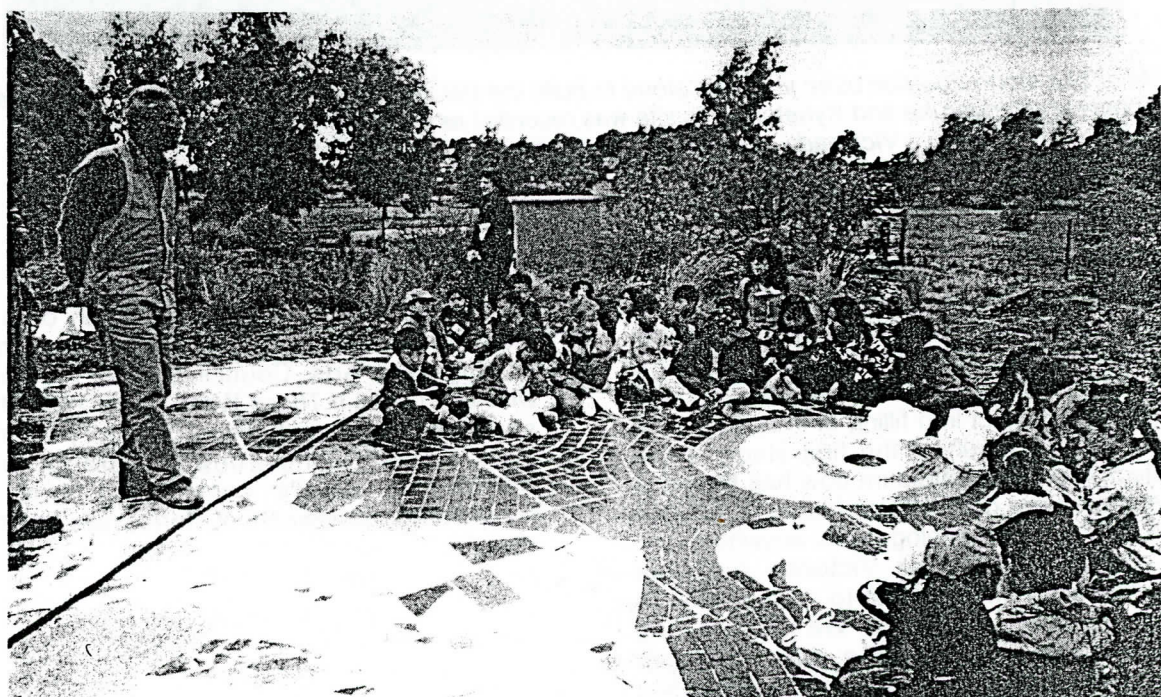
The most significant outcome was the creation and installation of a large mosaic placed in the Garden of the Future within the History of the Land Trail at Pipemakers Park, Maribyrnong. It is in a prominent position and emphasises the A videotape and numerous photographs were made of the total project so that other services can plan similar projects for themselves. One

photo from this collection was sent into the 1995 NICAN Photographic Competition and won a Certificate of Merit. The Australia Council have also expressed an interest in using a photo of the mosaic on one of their postcards.

positive sense of achievement and the obvious, and often untapped, capacity of people with disabilities to play a significant role in a successful and large community project. The History of the Land project has had support from several JobSkills and LEAP schemes and the Koorie Gardening Apprentices from the Living Museum. The Living Museum has always been encouraging in its approach to involving people with disabilities. A ramp was made by Roger Najjar and the JobSkills team to assist the participants to enter the mosaic studio. This made the participants feel welcomed by all Museum staff.

The Living Museum will be seen as an organisation that provides a positive model for others to involve people with disabilities. The acknowledgment of these peoples' work in the display and in the signs and brochures relays a positive message to a sector of the community who are generally ignored.

Helen Laffin



Gitet Abreha from Ethiopia, member of the 1995 JobSkills team, speaking to a group of school children about the History of the Land Discovery Trail.

RESEARCH

As always, the research activities of the Museum have been integrated into several other programs. Considerable research has been carried out into Aboriginal occupation of the basalt plains as part of several archaeological consultancies. These have also produced information on aspects of the first European settlement as well. Knowledge of the industrial heritage has developed through a National Estate program, and also as a result of consultancies for heritage organisations, such as the CSR, Geelong Ropeworks and Station Pier studies.

Those working on the exhibition *'Still Here': Aboriginal people of Melbourne's west* carried out extensive research on the region's Aboriginal history.

(See separate report)



Site of bluestone quarries used to obtain stone to build the DeGraves flour mill on the Calder highway between Carlesruhe and Kyneton. This site was recorded as part of an archaeological survey for VicRoads, prior to the construction of the new freeway.

Industrial Archaeology of Victoria

Additional funding for this large inventory and identification project was obtained from the Australian Heritage Commission's National Estate Grant Scheme. This has allowed us to extend the project into filling in the gaps in the record. As a result of the first stage of the project, the Living Museum now has the most comprehensive database on industrial heritage and industrial archaeology sites anywhere, and is consulting with the Victorian heritage organisations on how best to co-ordinate the recording of such sites. We are working towards the adoption of a data exchange agreement among heritage organisations, and a standard system for recording and classifying industrial heritage sites.

Dry Stone Walls

Gary contributed to a new publication on dry stone walls which was produced by the Corangamite Arts Council in the Western District. Entitled *If These Walls Could Talk*, the study described and researched dry stone walls around Camperdown, Terang and Derrinallum. Gary's contribution was a comparative assessment of stone walls around Victoria.

RESEARCH CONSULTANCIES

Archaeological and heritage consultancies have provided some interesting avenues for research and recording of sites of both Aboriginal and white heritage. They have ranged across Victoria, but with an emphasis still on the Western Region and the local basalt plains environment. Archaeological Surveys have been conducted for VicRoads at Carlsruhe on the Calder Highway, Craigieburn on the Hume Highway and Nelson on the Portland-Mt Gambier Road. Other consultancies were carried out for developers at Loch Sands, and the FAC at Tullamarine.

Calder Freeway

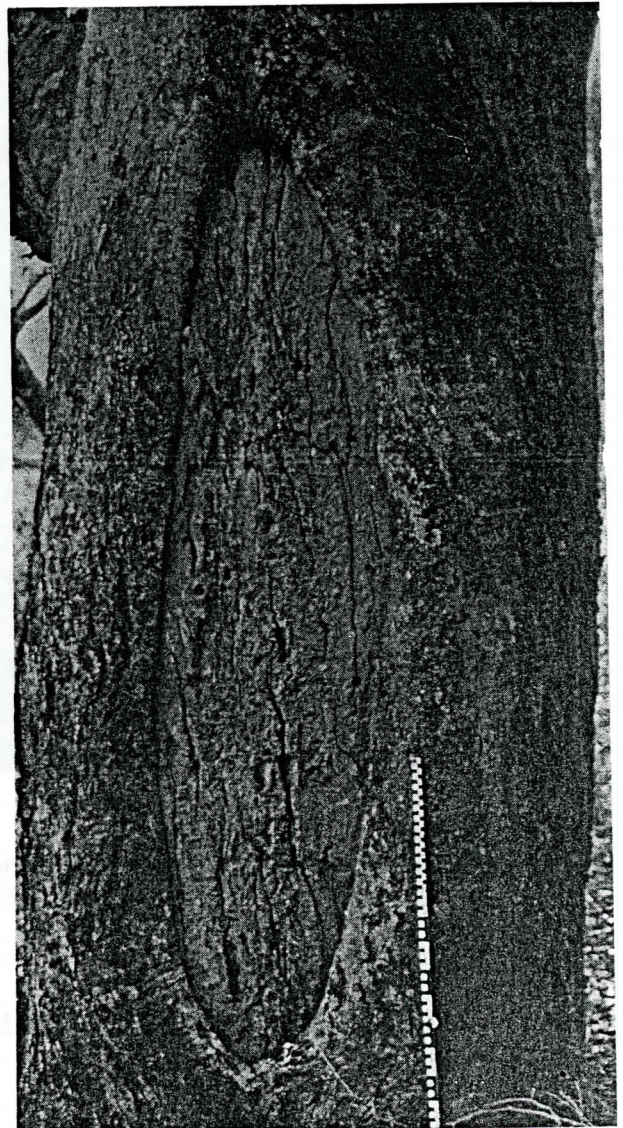
The Carlsruhe studies looked at the possible effect of proposed freeways. Carlsruhe was the second stage, which identified in detail archaeological and heritage sites near the freeway route and recommended ways to avoid their destruction. Fortunately the chosen route could be designed to minimise its impact, and only a small isolated Aboriginal artefact site would be affected. Consultation with the Aboriginal community was undertaken to determine the best way to record and collect artefacts from the site before it is disturbed.

Hume Freeway

The Craigieburn study is a preliminary assessment of potential impacts, and has had to assess the various effects of several routes. A complicating factor is the *Craigieburn indigenous grassland* which is of considerable significance. As the freeway reservation follows the Merri Creek, its effect on Aboriginal sites may be considerable and a balance has to be found between the natural and cultural values. Both the Hume and Calder Highway studies have revealed evidence of early European settlement in the form of bluestone ruins of homesteads and inns.

Grey Box Woodland

A major survey for the Federal Airports Corporation (for a proposed second runway at Tullamarine), discovered many Aboriginal and historic archaeological sites around the remnant grey box woodland on Radar Hill. These include a number of Aboriginal scarred trees, the ruins of Coghill's c1840 homestead, a possible early boiling down site, and the foundations of the former settlement of Oaklands Junction which lies directly under the end of the north-south runway.



Aboriginal scarred tree at the Grey Box Forest near Tullamarine Airport, identified as part of a survey for the FAC. The scar was formed when bark was cut off to make a shield.

RESEARCH CONSULTANCIES

Nelson Bridge

An initial preliminary survey for of the approaches to a proposed new bridge at Nelson on the Glenelg River revealed a few Aboriginal artefacts. This was followed up with a test excavation in consultation with the local Aboriginal organisations to ensure that the bridgeworks would not damage significant sites.

Loch Sands

A survey at Loch Sport revealed a number of coastal shell middens behind the Ninety Mile Beach. This site has been a contentious issue in the local area among both Aboriginal and non Aboriginal communities. considerable consultation with the Aboriginal community was undertaken.



Nelsons Bridge on the Glenelg River site of an archaeological survey involving consultation with the Aboriginal community and local; historical groups.

Historical archaeological consultancies

These have tended to be individually small but several have been undertaken. These have included expert advice on the archaeological significance of the CSR sugar refinery at Yarraville, which was recently nominated to the Historic Buildings Council; advice on a proposed redevelopment of Station Pier in Port Melbourne; an assessment of the

archaeological potential of two mansions in Queen's Road, South Melbourne for the Defence Department, and a registration assessment of the Geelong rope works for an Historic Buildings Council hearing. This last was part of the HBC's new approach to contract out assessments and augers well for further work of this type.

RESEARCH CONSULTANCIES & TRAINING

Explosives Factory Archives

The Living Museum won a competitive tender to assess and catalogue the historical documents and artefacts held by the Department of Defence at Explosives Factory Maribyrnong. This material had been compiled over several years, by the last Factory Manager, Ian Marshall, and comprises probably the most comprehensive record of the munitions industry in Australia. The collection includes photographs, document files, maps, plans and drawings, artefacts and publications. It amounts to tens of thousands of items, more

than a hundred thousand, including all the drawings. The initial stage of the project involved identifying the quantity, condition and nature of the material, assessing its significance and designing a cataloguing system. A computer database was set up, using Claris Filemaker Pro, and an Apple lap top computer was purchased so that the cataloguing could be carried out on site, without having to remove any material from the Explosives Factory.

Gary Vines



This photograph was discovered at the EFM Maribyrnong by a LEAP participant whilst working on an oral history project. First Aid Training, possibly during the second world war at the munitions factory.

LEAP Oral History Munitions Project

Explosives Factory, Maribyrnong, or 'EFM', was established in 1910, to produce military explosives. It was the first government explosives factory in Australia. Eighty-five years later, a team of thirteen young people began an oral history project there, under the auspices of Melbourne's Living Museum of the West. The Department of Business and Employment invited the Museum to 'sponsor' a project under the Landcare and Environment Action Program, known as LEAP.

With the help of their supervisors, Michelle Alchin and Marcello Cavallaro, the team prepared for and conducted interviews over a period of six months, involving people who had worked in the munitions industry but focussing on EFM. The result was a series of

radio programs presented on 3 WRBFM, a set of tapes presented to the Museum for its resource centre and a display produced by the participants.

RMIT provided the main component of training and the young people gained a range of skills during the project. The Museum especially appreciated the contribution of the Department of Defence in providing facilities for the team over six months and the co-operation of the site manager, Tom Sarlija. The Museum welcomed the involvement of these young people in its research activities and wishes them all well for the future.

Marcello Cavallaro
& Olwen Ford

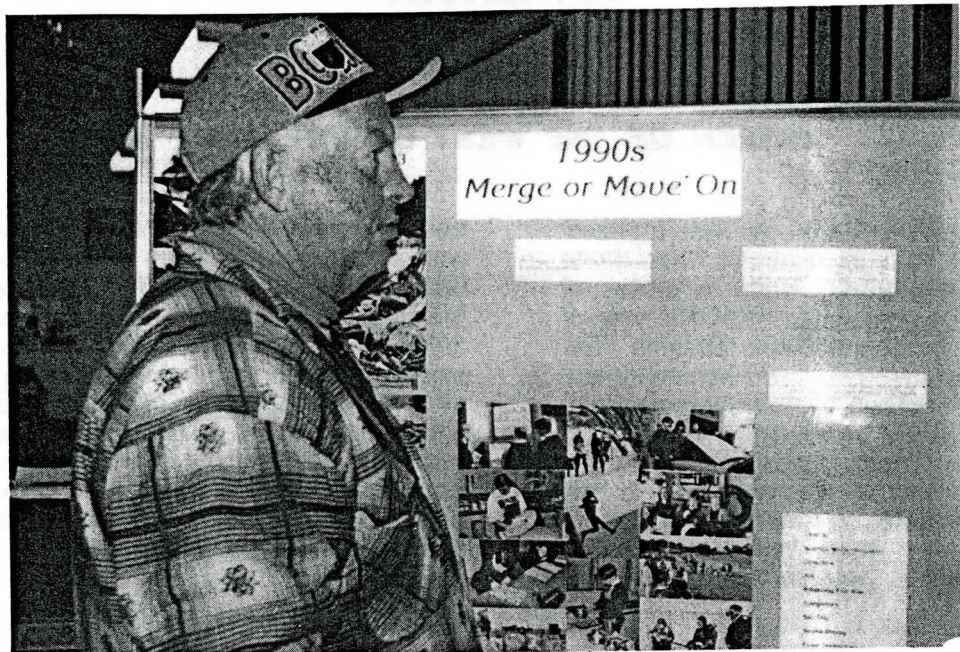
OUTREACH

Outreach was a key feature of the Museum's work in 1995. Community radio activity continued on the regional radio station 3WRB, while contact with young people grew through a project for young musicians out in the region. The Aboriginal program became more regional in focus and local Koories increased their use of the Museum's facilities. All the exhibitions at the Visitor Centre during 1995 reflected community participation and input and in turn attracted new audiences. Local newspapers featured people and events connected with the Museum and its activities.



Barbara Champion , Chief Commissioner for the City of Maribyrnong with Peter Faber (left) and Peter Sommerville at the launch of the exhibition 'Favourite Objects, History of the Soul' at the Visitor Centre, 10 August 1995.

OUTREACH



A Museum visitor studies the Williamstown High School Display which was at the Visitor Centre during September and October 1995. This display was co-ordinated by Marcello Cavallaro.

RADIO

EARS

The Museum attracted funds from a number of sources for radio projects and two of these, detailed in last years report, were concluded in 1995. One was the Victorian Women's Trust project *Women of the West on the Air* in which Christine Carley produced and presented the material and Mark provided the technical backup. Among the guests on this very entertaining series of programs were Libby McKinnon; the Koori Gardening Team's Jacquie Moore, Tammy Hunter and Odetta Webb; three times world aerobics champion, Sue Stanley; members of the Hanover Work Options/Skill Share team, as well as Josie, Cathy, Tanya and Christine herself from the rock band *Mother*.

The Energy Awareness Radio Show, or EARS project, was also completed in 1995. This project comprised a series of programs which discussed various strategies to save on home energy consumption as well as a series of short (30 second to one minute) ad type announcements in various languages and again on various energy topics. These ads are still being played throughout each week.

The Museum also attracted funding for a series of programs focusing on racism and youth, and

much of the radio activity in 1995 was spent in reproduction work on this series of programs.

The programs will look at a number of specific areas, like racism and the law, racism at school, racism and Aboriginals and so on. As part of the preparation for the programs a number of hours of 'on-the-street' interviews or 'vox pop' have been collected, interviewing young people on the street or in schools. The programs will also feature a guest and a panel-like discussion on current issues and newspaper articles in this subject area.

In addition to projects where funds have been obtained specifically for radio-based projects, a number of other projects have, as a part of their outcome, some broadcast material. The

Museum's regular presence on local radio also provides a useful vehicle for advertising Museum activities.

Radio helps us fulfil our outreach role very effectively and also allows us to provide a service to other community groups.

Mark Dawkins

OUTREACH

RADIO

WOMEN OF THE WEST ON THE AIR

'Women of the West on the Air' was a project funded by the Victorian Womans Trust. From August to September 1995 a series of interviews were conducted at 3WRB, one of Melbourne's community radio stations. The interviews' main focus was on women in non-traditional occupations and mainly women from Melbourne's western suburbs. With a few exceptions. Those exceptions, once discovered, had to be included in the interviews because of the importance and uniqueness of their vocations and opportunities for people listening to the program.

their peers within the industry. However the women interviewed from 'Hanover - Work Options/Skill Share' and 'Affirmative Action In Training Organisation' felt that women definitely needed extra support, and training, especially in male-dominated occupations such as the building industry. They had experienced some sexism during a session taken by a TAFE officer. They soon sorted that out by using some of their affirmative action gained in training they had been taken through near the beginning of their course.



Musician Christine Carley (centre) co-ordinator of the Women of the West on the Air project.

The program covered training opportunities, diverse career options and some contact information relating to on the job training opportunities and courses available.

One aim of these interviews was to get an idea of the sorts of obstacles women face when attempting to become involved in their chosen vocation. e.g.: whether they had difficulty during training, among their peers, on the job or pressure from friends or family.

Most of the individuals interviewed felt they received much support from friends, family and

Trainees and trainers were interviewed, with quite similar views on prejudice in the work place. The trainers felt it was important that trainees knew how to handle difficult situations, both on and off site and the importance of the familiarisation of routines and equipment.

Christine Carley

OUTREACH

M.I.C.S.S. MUSICIANS IN THE COMMUNITY SHARING SKILLS PROJECT



Christine Carley (far left) sharing her skills with young musicians involved in the MICSS project.

One of the ideas behind this project is that a group, predominantly made up of young women musicians, would be a valuable model for younger people especially younger women. The main approach is a series of music workshops, run by such a group of young musicians, for young people in Melbourne's Western suburbs.

M.I.C.S.S.- Musicians In the Community Sharing Skills enables young people between the age of thirteen and twenty five a one on one level of experience in a series of music workshops. Whether they play an instrument already or it has been a dream of theirs.

The focus is on the cultural aspect of music, both their own community's culture and other cultures that influence them on a day to day basis. An understanding of both covers and original music is important, the similarities and differences.

The groups have been looking at producing both contemporary and traditional music as a group, both covers (other peoples' music) and original pieces.

We have been workshoping with many groups in the community who are extremely enthusiastic about being involved in this project. Some of these groups are Western Juvenile Justice Unit - Sunshine, Parkville Residential Unit (known as Torana), Ausmusic, school groups and individuals.

In the last six months M.I.C.S.S. has participated in 30 workshops throughout Melbourne. The evidence of the success of these sessions suggests that these workshops conducted in the wider community, increases young peoples active participation in a creative process.

Currently M.I.C.S.S. is funded by The Lance Reichstein Foundation to carry out workshops within the western suburbs of Melbourne. Other Contributors to the project have been Ausmusic who pay for workshops carried out at Juvenile justice Units and Remand Centres, Mother, a rock band who carries out the

workshops and supplies the equipment for them and Melbourne's Living Museum of the West where the project is auspiced.

I believe these workshops have been of great benefit to the people who have been involved. I also see some great musical talent and the opportunity for airplay on some of the community radio stations we are involved with. M.I.C.S.S. is an on-going project which is now earning income for workshops by various community groups within the state.

It is intended that through the moneys earned through workshops, M.I.C.S.S. will become a financially independent group that will be available to young people in this community.

Christine Carley

OUTREACH

'BRENBE-AL' ABORIGINAL PROGRAM

The Museum's Aboriginal activities in the early part of 1995 were funded by 'Visions of Australia', working on research and preparation for the 'Still Here' exhibition. In April 1995 Aboriginal Affairs Victoria began to fund the position of Aboriginal Cultural Information Officer based with Melbourne's Living Museum of the West. Following the process of advertisement and interview, I was appointed to the position.

My list of activities over the year includes:-

Radio interviews/talks

WRB local radio x 5 interviews or talks
3 CR radio interview X 6 sessions

Talks

Holy Eucharist Primary School
x 25 students
Maribyrnong Council's Aged Care
x 12 people
St. Andrews Primary School, Werribee
x 100 students
Northlands Secondary College
x 14 students
Melbourne Zoo x 5 staff (3 sessions)
Marian College x 13 students
Our Ladies Primary School x 120 students
Good Shepherd Primary School
x 60 students
Moonee Ponds Primary x 120 students.
(2 sessions)
Swan Hill Secondary College
x 40 students
Milleara Primary school x 80 students
R.M.I.T. Coburg Campus x 20 students
Glenroy Koorie Open Door Education School
(K.O.D.E.).x 100 students
Broadmeadows T.A.F.E. X 20 students
Adult Migrant Educational Services
x 15 people
Victoria University of Technology
x 100 students
Australian Herbs Growers Society
x 30 people
National Trust Connections Group
x 25 people
Footscray Community Arts Centre
x 8 people (visit to park)
Footscray Community Arts Centre - 3 talks on
local Aboriginal artists' involvement

Input to conferences

3 days conference on Aboriginal Arts
Development in Sydney - gave talk
Aboriginal Arts Development conference with
Arts Victoria - 2 days

ATSIC conference at Marysville - policy
formulation, guidelines - 3 days
ATSIC conference at Marysville - Education - 4
days
ATSIC conference on economic development
- 2 days

Meetings

A.T.S.I.C.- 15 Planning meetings to do with
arts, heritage, culture and tourism.
Northern Metro T.A.F.E. - 3 curriculum
planning meetings
C.A.E. - 4 planning meetings
V.U.T. planning committee - 2 meetings
2 meetings with D.E.E.T.
4 meetings for local area planning Saltwater
Festival exhibition

Inquiries

20 inquiries about local Aboriginal History
3 inquiries about children being taken away
6 inquiries about Aboriginal Painters
2 inquiries about Aboriginal Crafts
11 inquiries about Aboriginal dancers
18 inquiries about where to go to see
Aboriginal Arts and Crafts
7 inquiries to see if I knew where to find certain
people.

I have made many inquiries on behalf of local
Aboriginal people, and the various Aboriginal
organisations I visit to ensure these people
remember that there are a lot of Aboriginal
people still living here.

Research

During this time as in the previous period I am
still tracking down photographs and old
documents. The problem with these old
documents (in some cases, hardly legible) is
that in most cases they must be rewritten, as
the typing fonts that were used then are
entirely different to the ones used now. We
have had to experiment on getting as close as
possible to the original script. Some of the
photographs are old photocopies, so we are
still working on ways to sort out a way of both

OUTREACH

'BRENBE-AL'



Artist Lisa Kennedy with one of her paintings that is reproduced in her book *'Lielle's Spirit Bird'*. This exhibition of Lisa's work was held at the Visitor Centre in conjunction with the Aboriginal concert *'Nutbroki Ilbejerri'* in April 1995.

saving and transferring the images to make a new photo for either exhibition purposes, or for an information data base.

I spent two days on research at the Mitchell Library and the Australia Museum in Sydney. I assisted with research for the 'Still Here' map and advised the group working on its production.

Aboriginal festival

A major event during the year was the Aboriginal Concert on 29 April 1995, funded by Arts Victoria, an outdoor concert held in Pipemakers Park concurrently with an exhibition of art works by Lisa Kennedy in the Visitor Centre. This event, compered by Herbie Patten, featured a range of Aboriginal performers, including Joey Geia, and attracted a number of Koorie people.

Display

A *'Still Here: Aboriginal people of Melbourne's west'* display was made available to the Saltwater Festival. The display was on view at the Visitor Centre for much of 1995, as part of the work-in-progress for the 'Still Here' exhibition.

Formation of a Working Party

In November 1995 a new Koorie regional committee met to form a Working Party. This

meeting was held at the Museum's Visitor Centre and was videoed. The Working Party has since continued to meet regularly at Pipemakers Park.

Djab-wurrung language project

The Museum agreed to be the auspices body for an ATSIC grant towards the Djab-wurrung language project, in the Western District of Victoria. The project involves members of the local Aboriginal communities in that area and aims to retrieve some of the Djab-wurrung language. The task of keeping in touch with the project has included making a visit to the Portland area. to discuss progress.

Koorie Gardening Team

We are working with the Koori Gardening Team to help them negotiate their own contract employment base as a step to them becoming an independent Aboriginal business.

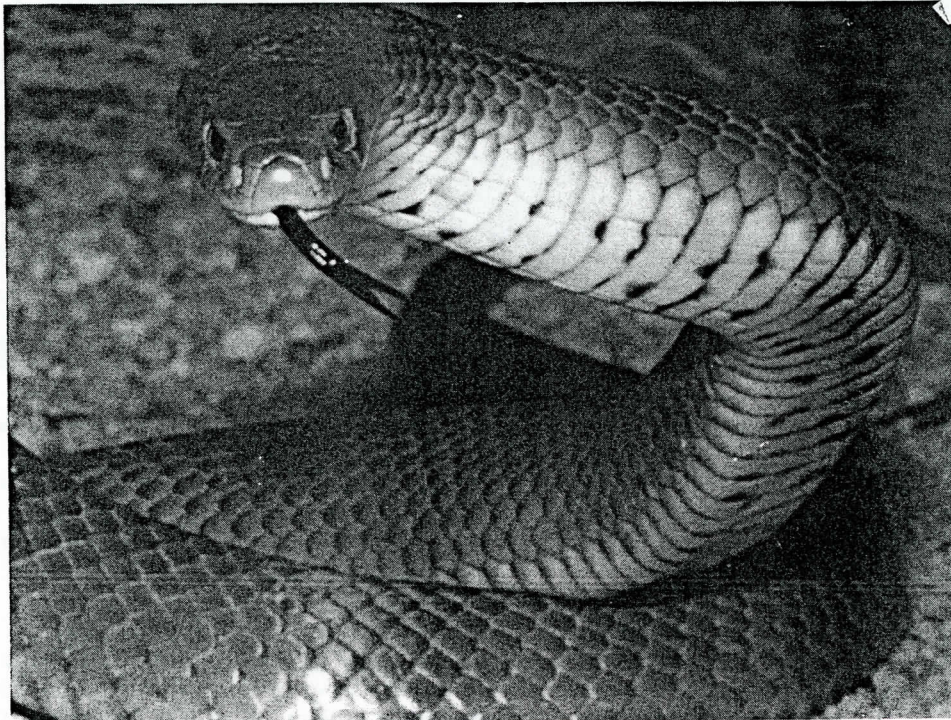
Aboriginal employment

I am also looking at starting to investigate options for gaining employment for other Aboriginal people. We will not know the final result until next year.

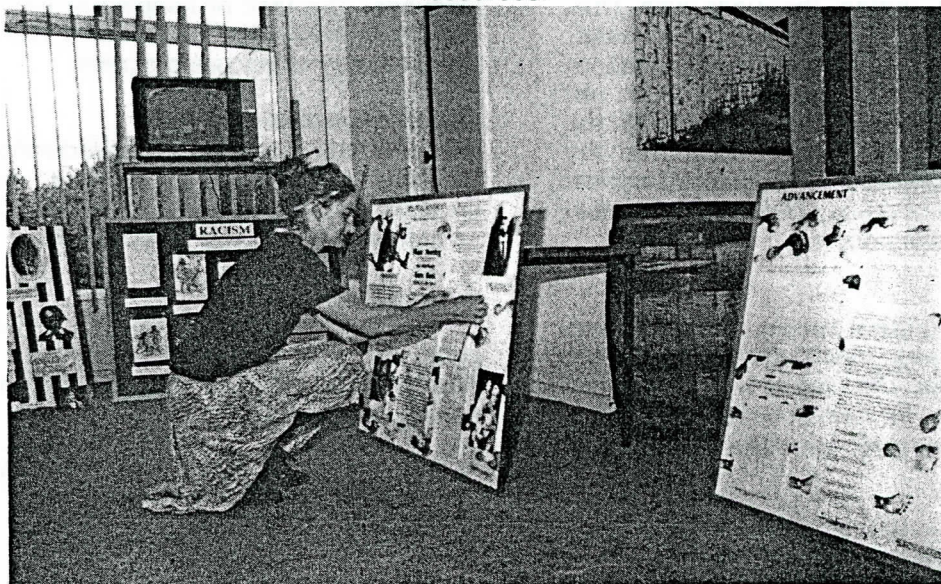
Larry Walsh

OUTREACH EXHIBITIONS

The Museum hosted a number of community exhibitions in 1995 including; the exhibition of Lisa Kennedy's work; The Back Gate: an exhibition of mosaic mural works from the Lynches Bridge Project; Favourite Objects, History of the Soul; Ninety Years On: The story of Williamstown High School and Snakes Alive: indigenous fauna of Melbourne's western region. A number of displays documented current projects in the park including the JobSkills project.



Snakes Alive, the exhibition was a popular display produced by the Museum and Brian Barnett in 1995, with assistance from volunteers and funding from the Department of Conservation and Natural Resources.



Kerrie Poliness working on the display 'Still Here' at the Visitor Centre. This exhibition will be launched in 1996.

OUTREACH EXHIBITIONS

Favourite Objects, History of the Soul



I'm not a prolific tea drinker, but I do enjoy a proper, brewed cuppa, especially with my girlfriend each morning.

I like this pot, not only because it's a perfect size for two, big cups, but also because it was cheap. I got it for \$1.50 from an opportunity shop.

It says two things about me: I'm fussy, and I'm cheap!

Ian Kenins' teapot and text was on display in the exhibition 'Favourite Objects, History of the Soul' at the Visitor Centre in 1995.

The exhibition titled 'Favourite Objects/History of the Soul' included 25 people from the western suburbs of Melbourne, some well known, others not so well known, all were either living or working in Melbourne West. Each person displayed their favourite object along with their story explaining why that particular object was their favourite. The objects and stories were displayed on plinths made from modified sections of cement pipe found on the site of the pipeworks.

The exhibition was opened in August by Barbara Champion the Commissioner for Maribyrnong and most of the participants of the exhibition attended.

The participants were; Michael Leunig (cartoonist 'The Age'), Joan Kirner (ex-Premier), Margaret Haggart (opera singer), Geoffrey Wright (film maker ('Romper Stomper')), Le Van Tai (refugee and poet), Elizabeth McKinnon (mosaic producer), Peter Sommerville ('Blackbird' tour boat operator), Zoe Dawkins (Spotswood primary student), Les Twentyman ('homeless youth' worker), Rick Van Keulen (forager, community worker), Roger Najjar (handyman, inventor), Carmellia (delicatessen worker), Ian Kenins (journalist), Laura Skinner (kick boxing champion), Graham

Dickenson (radio announcer and 'Beatles' expert), Mark Ferrie (bass player), Fiona Brown (telephonist at Campbells Soups), Paddy Garrity (Trades Hall & Community Arts), Kerrie Poliness (artist), Wendy Stapleton (actor, singer), Barbara Champion (Commissioner for the City of Maribyrnong), The Women's Circus (a women's circus), Helen Rodd (youth worker at WIPE-IN), Sue Stanley (World Aerobics Champion 1994).

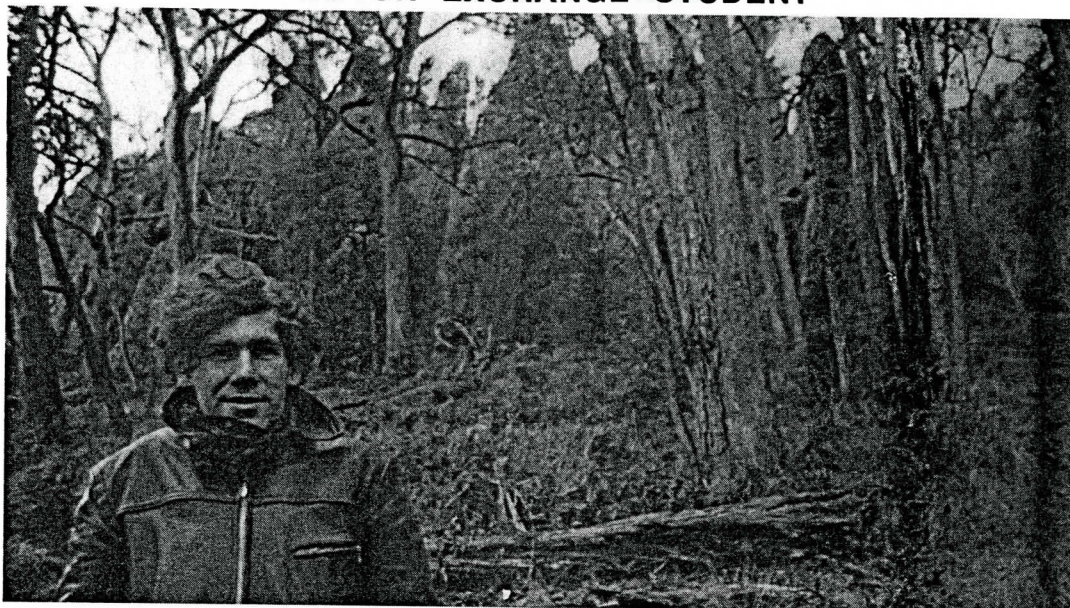
Most of the exhibition organisation was done by Peter Faber the Living Museum's Netherlands student placement. Peter Faber also arranged security of the objects by installing a video monitoring system for the duration of the exhibition courtesy of Active Alarm Systems. The Museum also produced a small exhibition catalogue which includes reproductions of all the objects, photographed by Marcello Cavellero and Fiona Brown, and reproductions of the stories.

I thought of the idea for this exhibition in 1995 while overseas on an Australia Council Artist in Residency grant. It was a great experience to return to Australia and design and produce this exhibition with Melbourne's Living Museum of the West and Peter Faber. Thanks to everyone that helped.

Kerrie Poliness

INTERNATIONAL OUTREACH

DUTCH EXCHANGE STUDENT



Peter Faber at Hanging Rock.

He described himself as a red tulip from Amsterdam and a red tulip he is indeed. Peter Faber is the first international exchange student to be placed at the Living Museum and he has been a delight. We believe the placement has been a success all round. This placement followed considerable work from Peter's supervisor at the Hogeschool, Nijmegen, in the Netherlands, Martin van Summeren, who takes time and trouble to look for suitable placements to suit the different personalities of his students.

After visiting the Living Museum and discussion with the Victoria University of Technology, Martin decided the Museum could be an interesting placement for Peter Faber. As far as we can make out this school in the Netherlands places some emphasis on the personal development of its students and Peter Faber has some strong and independent views on the philosophy of his education. He has what is often called an independent streak and would find a strongly structured environment difficult to work in.

In the first month Peter Faber familiarised himself with the workings of the organisation and the director and the rest of the staff talked to him to find out what he was expected to achieve, what his interests were and what he could do. It is the policy of the Museum to encourage staff to undergo programs and projects suitable to their talents and interests.

Peter explained his training was in organising recreation and his interests were in creativity and art. In the first few weeks he helped others on their projects. Soon after he arrived the Museum's Annual General Meeting was due. This is the most official and important occasion in the year. Peter said he had an idea to make it more interesting. The meeting was usually held in the Museum's Visitor Centre and had a standard format that had been followed for years. Peter Faber wanted to shift the meeting into a large stone building nearby and make it more creative.

So after some consideration he was given full responsibility to change the event. This required dealing with many details and maintaining an atmosphere of importance while taking risks with a new way of presenting the meeting. It was very successful and the members of the Museum at the meeting were surprised, entertained and impressed. Then he went on to work on several other projects.

It is quite an awesome responsibility to take on an international exchange student as there are invariably problems of homesickness and frustrations with separation with events back home. Peter went through all of these. However he developed close relationships with several members of staff and lived in a house with the Museum's Finance Manager, Peter Haffenden. So he became an integral part of our social life away from work as well as at work and has become a friend for life for some of us.

MARKETING

The Museum developed its marketing activities in 1995 through community events such as concerts and festivals in Pipemakers Park and the accompanying publicity, through promotion of the Museum and the park itself and through a tourism development consultancy which developed tour packages in Melbourne's western region for the Western OLMA (Office of Labor Market Adjustment) Committee.

Songs of Working Life

Celebrating the Spirit of the Worker

FREE CONCERTS

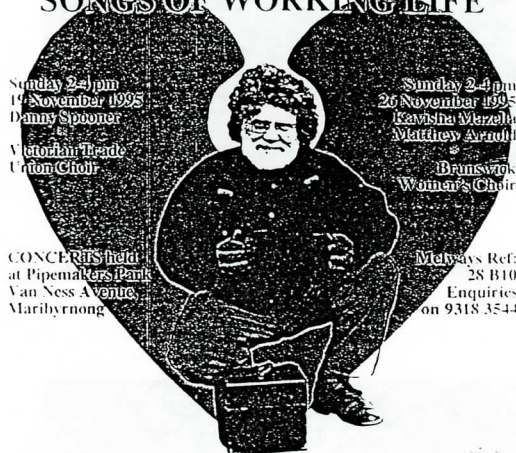
Hearthhealth
SONGS OF WORKING LIFE

Sunday 2-4pm
19 November 1995
Danny Spooner
Victorian Trade
Union Choir

Sunday 2-4pm
26 November 1995
Kavisha Mazzella
Matthew Arnold
Brunswick
Women's Choir

CONCERTS held
at Pipemakers Park
Van Ness Avenue
Maribyrnong

Melways Ref:
28 B10
Enquiries
on 9318 3544



"I have to breathe freely to sing"

MELBOURNE'S LIVING MUSEUM OF THE WEST



Poster produced by the Museum to promote the 'Songs of Working Life' concerts in Pipemakers Park. The poster features folk singer, Danny Spooner, and a health message.

suburbs are renowned for the large development of industry and factories for many years. The Living Museum has a strong commitment to acknowledging the important role that the people in the community have had in creating history. It aims to promote an appreciation, understanding and an enjoyment of the arts.

The performers presented songs and music chosen for their reflections on the feelings and experiences of a variety of workers. The aim was to pass on to the audience a greater experience of the diverse working conditions and lifestyles of the workers in the West both from songs about the past and contemporary interpretations.

The concert audience all expressed their pleasure at the quality of the performers and hoped that some more concerts would happen in the future.

I would like to thank all who helped with the smooth running of the concerts - George, Christine, Darren, Bao, Olwen - and to Peter for the production of the concert poster. Without all this support, the concerts would not have been possible.

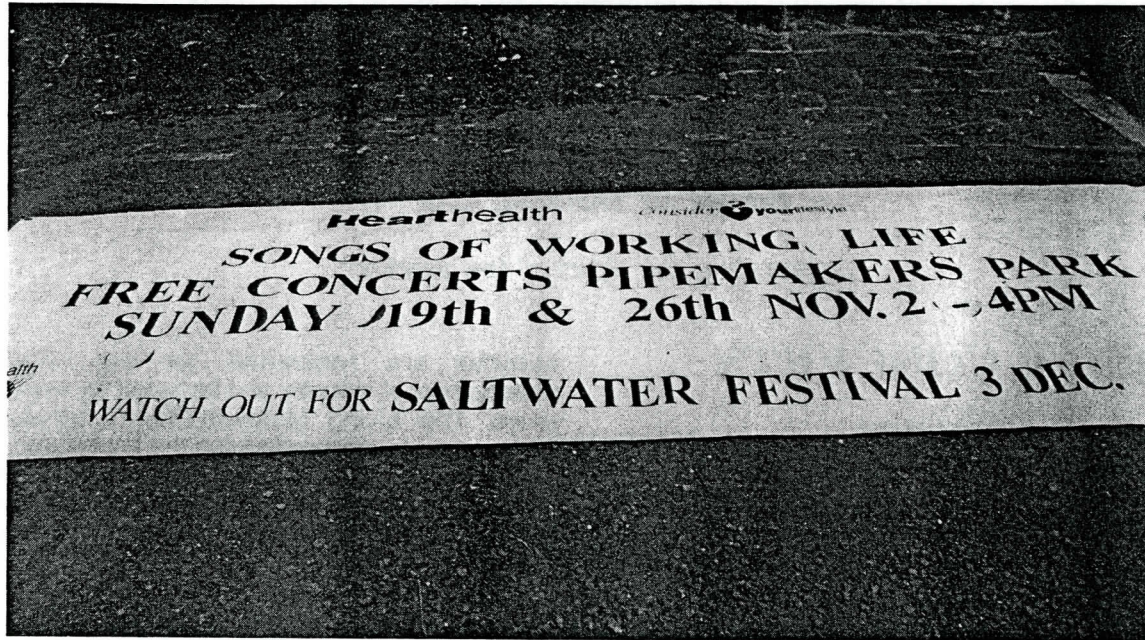
Helen Laffin

Helen Laffin co-ordinated a project which involved the organisation of two concerts with performers Danny Spooner, Kavisha Mazzella, The Brunswick Womens Choir and the Victorian Trade Union Choir. This project was funded by VicHealth and supported by the National Heart Foundation. The concerts were held on 19 and 26 November 1995.

The concerts had a specific link to previous Living Museum activities which involved the local community in documenting and presenting the history and culture of Melbourne's Western Region. The Western

MARKETING

Songs of Working Life



Banner advertising the 'Songs of Working Life' Concerts sponsored by Vic. Health, supported by the Heart Foundation, 1995.



The second 'Songs of Working Life' concert, 26 November 1995, in the recently restored main bluestone building, Pipemakers Park. Brunswick Womens choir on stage.

MARKETING

Western OLMA Region - Tour Development Project

The Tour Development and Promotion Pilot Project was one of the most exciting consultancy exercises carried out by the Living Museum. This \$40,000.00 consultancy, funded by the Western Region OLMA Committee, specifically aimed to develop ongoing bus tours into the western region to promote economic development in the region and took more than a year to complete.

It involved liaison with all sectors of tourism in the region and beyond it. There were many challenges like a complete re-structuring of the municipal landscape during the progress of the work which didn't help. The Museum extended the brief to a general marketing of the region within a tourism framework and extended the networks of Museum business into the commercial sector more strongly than before.

Although the brief involved the specific marketing of tourist venues in the region, it became a marketing exercise for the whole region. Philosophically this fitted the aims and objectives of the Living Museum as a successful tourism industry can contribute to the awareness of the value of local heritage and can be a contributing factor to the preservation of that heritage.

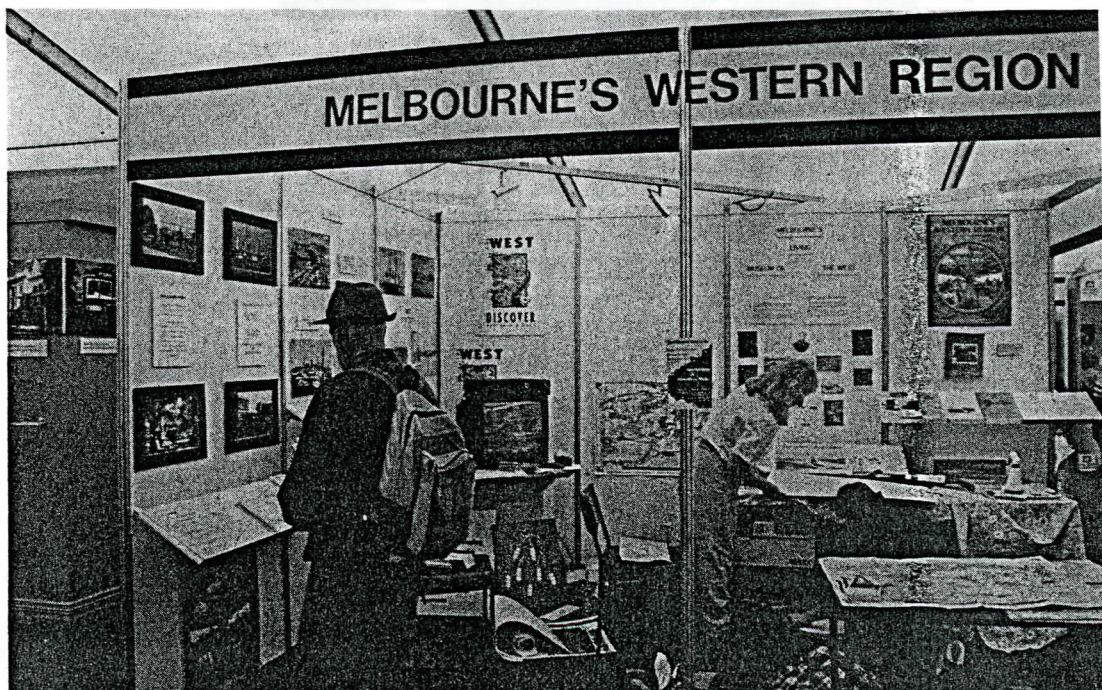
One of the highlights of the work was putting together a 'Western Region' display stand at the Avalon Air Show in March, which was

attended by thousands of people. As far as we know, this was the first time the region had been marketed as a region at such a large venue. However, the specific brief was to create bus tours. We finally settled on a smaller bus line with a range of tours, 'Liveable Melbourne Tours' run by Graeme Jeffrey. After weeks of work and dry runs we worked out a series of four tours with Graeme.

The primary tour picked up in the city or anywhere in Metropolitan Melbourne a group might choose and then first went to Williamstown to take in the early history. Then on to Point Cook Homestead, one of Victoria's oldest remaining squatter homesteads, for a coffee and a wander in the grounds. The next stop is the Victorian Ostrich Farming Centre which is a lot of fun and then on to Werribee Park Mansion for lunch and a tour. After that is a Safari Tour at Werribee Zoo then off to Werribee RSL for a wind down. All inclusive for \$55.00. A great deal and a different view of the west than is generally thought.

One interesting thing about this project is that it hasn't stopped. The Living Museum has been involved in some way with local regional tourism since it first began and continues to do so after this project has officially ended.

Peter Haffenden



Display stand for Melbourne's Western Region at the Avalon Air Show.

PUBLICATIONS

Museum staff worked on a number of publication projects during 1995, though final production of some items was early in 1996, notably the map 'Still Here: Aboriginal Map of Melbourne's West', funded by the Department of Conservation & Natural Resources and the catalogue for the 'Still Here' exhibition, funded by Arts Victoria. Melbourne Parks & Waterways Community Grants program provided the funds for signage and a brochure relating to the 'History of the Land Trail' and these were completed during the year.

The History of



the Land Discovery Trail

Museum brochure produced in relation to the 'History of the Land Discovery Trail., 1995.

Melbourne's Living Museum of the West increased its stock of publications produced by other community organisations or local residents. Some of these were very popular, particularly *Move Over Rose, here comes the Blue Devil.*; *Plants of Melbourne's Western Plains* and *Plants of the Merri Creek*. The Museum has also sold a number of local history publications over the past year.

ADMINISTRATION

1995 saw the implementation of the first year of the Living Museum's five-year Business Plan, 1995-99. This included review and revision later in the year as we planned for 1996. The Museum continued detailed documentation of project expenditure and sought further consultancies, especially in the area of heritage and archaeology. The Museum also earned some income from administering projects, for example, the Parkcare project.



Jeff Floyd General Manager of Melbourne Parks and Waterways, explores the History of the Land Discovery Trail with Elizabeth McKinnon artist/designer as guide.

A number of volunteers assisted in Museum projects and activities during the year, including:

Marcello Cavallaro
Sally Lloyd
Angelo Salamanca
Kerrie Poliness
Fiona Brown
Gabe Boon
Junny Heatherton
Jessica Calahan
Lisa Kennedy & helpers

Marcello Cavallaro, later became involved in coordinating major projects for the Museum. With Peter Faber, our international trainee, they brought new life into our living museum. A highlight of the year was a rather different Annual General Meeting, organised by Peter Faber. We welcomed two 'New Work Opportunities' staff via 'Life Be In It' - Bao Ho and George Cawley. Bao worked as an education Officer and George as an Industrial Heritage Resources Officer.

Work experience students included:

Junny Heatherton (TAFE)
Kate Cruikshank, Ave Maria, College

ADMINISTRATION

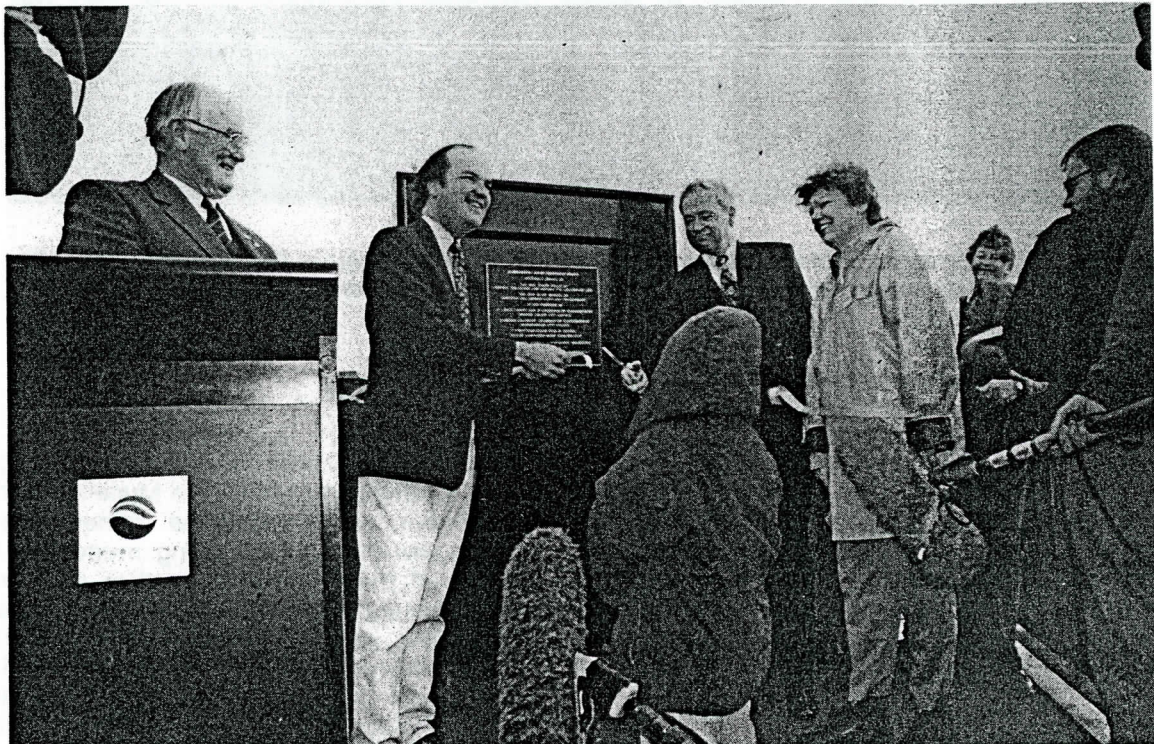
Museum staff during 1995 totalled at least twelve, including:

Christine Carley - Project Officer
George Cawley - Heritage Resources Officer
Laurel Crampton: JobSkills co-ordinator
Mark Dawkins - Project Officer
Olwen Ford - Museum Director
Peter Haffenden - Finance/Projects Manager
Helen Laffin - Project Officer
Elizabeth McKinnon - artist
Bao Ho - Education Officer
Gary Vines - Industrial archaeologist/curator
Larry Walsh - Aboriginal Cultural Officer
Jeff Walsh- Koorie Gardening Team co-ordinator
(to April 1995)
Neil Werrett - Koorie Gardening Team Co-ordinator
(from April 1995)
Judy Xenophou - Finance Officer

Others who worked for the Museum as consultants were :

Roger Najjar, Ingrid Unger, Marcello Cavallaro and Aboriginal field staff involved in archaeological projects.

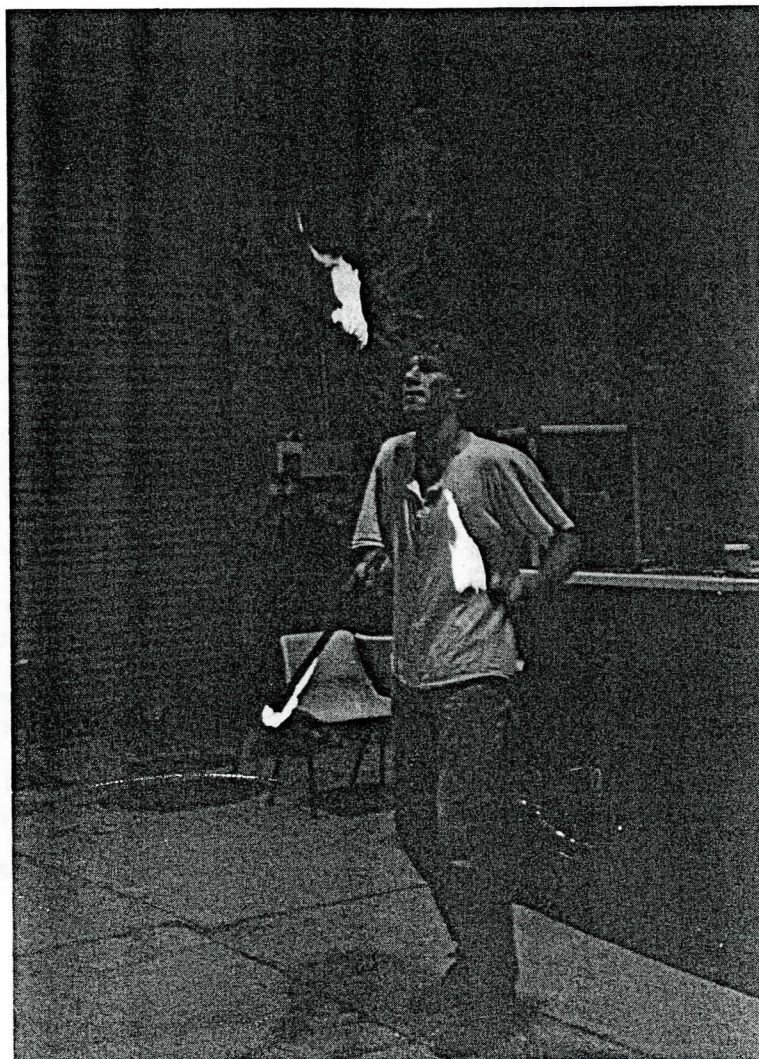
We thank all volunteers, trainees, work experience students, part-time and full staff, and Committee members for their work and also thank Museum members and all our supporters.



Opening of the pedestrian bridge, Pipemakers Park, 1995. Left to right: Chief Commissioner Les Crofts (City of Moonëe Valley), the Hon. Mark Birrell (then Minister for Conservation, Victoria), the Hon. Ralf Willis (then Federal Treasurer), Chief Commissioner Barbara Champion (City of Maribymong) and Carol Willis.

PROFESSIONAL DEVELOPMENT

Museum staff kept in touch with wider contexts through attendance at conferences and seminars, in Melbourne and inter-state. These included the national conference of Museums Australia, held in Brisbane, attended by Olwen Ford. Larry Walsh took part in two major Aboriginal Arts Development conferences in Sydney and Melbourne. Peter Haffenden maintained his involvement with the Arts Management Advisory Group.



Peter Faber the Museum's International student placement from the Netherlands. During his time in Australia Peter Faber was enrolled at the Victorian University of Technology.

Amongst the courses undertaken by Museum staff were computer graphics courses (Elizabeth McKinnon and Peter Haffenden), a computer course (George Cawley) and a Museum Studies course relating to history museums ((Olwen Ford).

Bao Ho and George Cawley received 'on-the-job' training while based with the Living Museum, through Life Be In It. Our international trainee, Peter Faber, also developed his skills in a range of areas, including his spoken English and the art of driving a car.

PROFESSIONAL DEVELOPMENT

West meets West

I wandered into this Living Museum sometime early in 1995 fresh out of the giant state of Western Australia. Being from an Italian background, my Mediterranean looks were rare among a sea of six foot blond bodies. This was situation normal. Imagine my surprise when I came to Melbourne and there were hundreds of Mediterraneans. The short story is that Melbourne was a feast of cultural diversity and the dynamics of culture is one of my major interests. My major interest, focus and vocation is media and particularly media image. I mainly do videos. This Living Museum seemed to offer a base for an endless supply of work in these areas and I also liked its philosophy and sense of teamwork which sometimes comes across as semi-ordered chaos. But it seems to work.

Interested in the Museum's approach to recording and representing history, I became involved in a number of projects. Primarily I was involved with the Still Here Exhibition. Here I was copying pictures and assisting Larry with research. Eventually I took on board most of the Museum's photographic work. This work included photographing the objects for My Favourite Object Exhibition, photographing Stage 3 of The history of the Land Discovery Trail and photographing most of the events that happened throughout 1995.

As part of the Museum's outreach program I produced '80 years On', an exhibition on the history of Williamstown High. This was done in

collaboration with Iris Whitehurst, staff and students. I also worked on the LEAP Oral History Munitions Project as a supervisor.

A static display and about 10 oral histories audio tapes were produced.

One thing that was lacking in the Museum's tools was a video camera. The Museum had previously produced videos in its first years of operations but had got behind with the changes in technology and the lack of expertise in this area. With the acquisition of a new video camera several projects were to be able to be satisfied in the documentation area. The Aboriginal concert was video taped. A short promotional video was produced for the OLMA Tourism Development Project whereby post-production was done at Open Channel. A promotional video was produced for the Arts in the Park project, post-production was done at Footscray Secondary College. This program was used for support material in obtaining funding for The Blue Devil Waltz. This 25 minute documentary on The History of the Land Discovery Trail is currently in production.

I am currently developing the idea of the Museum extending its success with consultancy work into a more developed and consolidated media production house which generates documentation of the region while funding its own process. This is the philosophical framework that works for the Living Museum that I find so appealing.

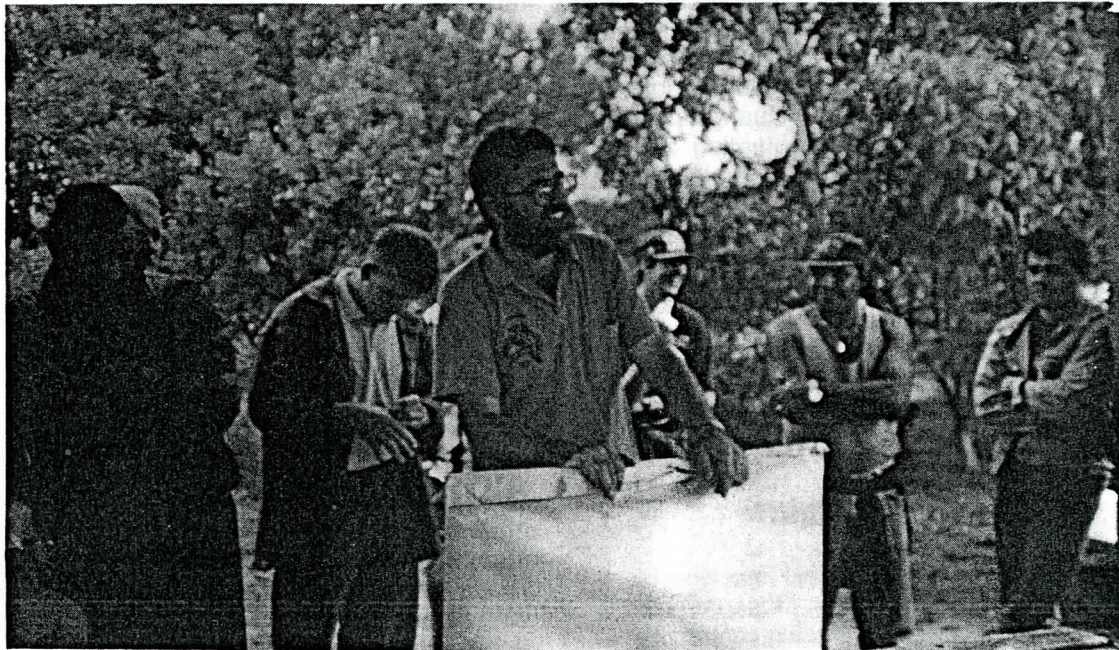
Marcello Cavallaro



Marcello Cavallaro during filming of The Blue Devil Waltz.

KOORIE GARDENING TEAM

The Koori Gardening Teams year has been marked by change and growth. it continues to be recognised as an outstanding example to the Aboriginal commitment and as a model of co-operation between Koorie and non Koorie people and organisations, a "best practise" of employment and training.



Sad send off to Jeff Walsh

Jeff Walsh

After three years of outstanding service and achievement. Jeff Walsh left in March 1995 to continue his career in Mildura. Without the foundation put in place by Jeff the team would not of developed as steadily as it has.

The new co-ordinator is Neil Werrett who has spent many years with the former City of Keilor and comes with skills in horticultural management, strategic maintenance planning and a focus on customer needs but has a passion for what and whom makes up the Western Suburbs.

Service Profile

Through 1995 the team has undertaken a broad range of landscape projects and in summary reflect the teams service objectives.

- large scale planting and revegetation projects
- environmental sensitive work practices
- remnant revegetation protection and regeneration
- public open space maintenance including sports grounds, parklands, road verges and garden beds
- specialised gardening in industrial commercial and retail settings

The Koori Gardening Team has developed an excellent track record for successful completion of contracts on time, to the agreed quality and within budget. This is demonstrated by the growing list of contracts already completed and currently under way. A sample of recently completed projects is shown on the next page.

KOORIE GARDENING TEAM

I

Client	Project	Value(\$)
Maribyrnong City Council	Public open space maintenance including 70 hectares of parkland, roadsides and sporting grounds	750 000
Australian Nature Conservation agency	Revegetation works and heritage site protection	68 000
Melbourne Parks and Waterways	Parkland maintenance revegetation	10 000
Barro Group Pty Ltd	Quarry revegetation and tree planting	15 000
Ecodynamics Pty Ltd	Tree planting and revegetation	10 000
Science works	Landscaping	
Zoological Board of Victoria	Plant production and supply	5 000
R.J. Kirwan Pty Ltd	Highway tree planting	10 000
Abi Group (Western Plains Flora)	Highway tree planting	25 000
		15 000

Contract Highlights

The big news of the year for the Koorie Gardening Team and the Living Museum was the team winning a major gardening contract in the commercial arena under the new standards of compulsory competitive tendering. This was an achievement beyond all expectations which has all kinds of positive implications for the perception of Koorie people in this region and others. This important project won by the team in September in a competitive open tender is with the city of Maribyrnong maintaining the northern sector of the city some 70 hectares of open space. An enviable achievement for the group to achieve and one that has set the pace for others to follow.

The 77,300 indigenous tubes planted this year was not marked by a significant ceremony but clearly demonstrates the volume of work for 1995. The range of plants included grasses to large trees and ranges from quarry revegetation for the Barro Group to major planting's on the Western Ring Road and the Calder Highway. One garden area on the Western Ring Road was planted with 23 960 *Poa Labillardieri* (common tussock grass).

Other highlights include the building of a stone shelter at Scienceworks and development of an Indigenous garden. The team also established an indigenous garden at the education centre at Werribee Park Zoological

Gardens and Royal Melbourne Zoo. Both projects involved detailed planning and interpretive information for teachers to use. Close to home Footscray West Primary established the first stage of an indigenous garden with the help of the Team.

The focus of the Team is on high quality training in a supportive real work environment. The off the job training at Northern Metropolitan College of Tafe is well supported by both Ian Lee and David Caldwell. Western Region group Training continues a highly supportive role in all aspects of the teams development. Tom Kinder, Graham Saville and Esmae Mangeham were instrumental in Darren Braybon winning 1995 Apprentice of the Year in horticulture for the state; and a finalist in the 'Young Achiever of the Year Award'. Darren winning 'Apprentice of the Year' is tribute to his determination and hard work that characterises Darren's achievements in 1995. Darren commenced his apprenticeship and has been employed by the team as a team leader to assist Neil in the team's development. Three apprentices will complete their apprenticeship in 1996.

Three new first year apprentices will commence early in 1996 and continue the team's commitment to training. The apprentices completing in 1996 with Darren are the largest group of Koorie people to graduate in gardening in the history of the trade.

KOORIE GARDENING TEAM

Cultural Development

Darren Braybon, Tammy Hunter and Jacquie Moore travelled to Alaska in August 1995 to attend a tribal gathering. Tammy and Jacquie were both funded through ATSiC With Darren being supported by L.M.W. for his airfare. All three were generously supported by Western Region Group Training. The trip was an opportunity to share and learn from other indigenous people from Russia, America, Japan and other countries.

A.N.C.A.. Project

This is a federally funded project relating to vegetation and interpretation. The team has been actively managing a major site on Kororoit Creek including the management of rare and endangered plant species and sensitive grassland remnants. This project is marked by successful outcomes and early in 1996 two team members will visit Canberra to be part of a display that demonstrates a successful project undertaken by Aboriginal people and is seen as a model across Australia.

New projects

Rapid continued growth will no doubt continue through 1996. With Compulsory Competitive Tendering opportunities will continue. The team has submitted and is part of a number of tender submissions and has lodged a capital equipment proposal to A.T.S.I.C. Late in 1995 some contracts have been won in a smaller way with the Department of Defence and the team is poised to intensify its work with in the region.

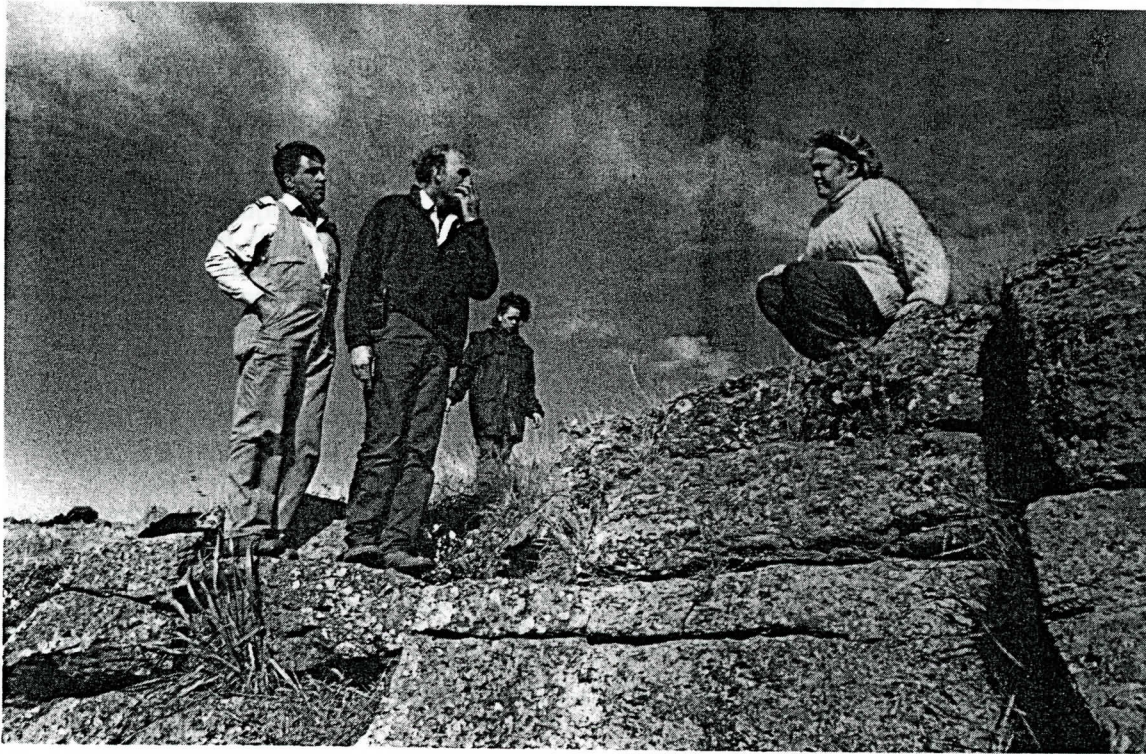
Melbourne Parks and Waterways

The Team is fortunate to have strong support from Melbourne Parks and Waterways in particular the staff at Maribyrnong Valley Parklands. David Collins, Rod Hill, Greg Hitch, Paul Hitch and Gerry Sansisco have all given their time, support and guidance to the team. They deserve a special thankyou from the team.



Darren in Alaska.

KOORIE GARDENING TEAM



The Team inspecting the A.N.C.A. site in Deer Park .



Neil Werrett the new Team Co-ordinator.

COMMENTS FROM VISITORS 1995

Comments in the Visitors' Book at Pipemakers Park ranged from the lukewarm 'O.K', 'Not bad' and Quite good' to the enthusiastic 'Great', 'Interesting', 'Lovely' and 'Very Good'. Visitors came from near and far, from Maidstone, Essendon, Footscray and Flemington to Brighton, Brunswick, Canberra and Sydney to England, Vietnam, the Netherlands and Bangladesh.

Further comments included the following:-

Museum very interesting
 Very educational
 Interesting walk
 Great Work
 Cool Works
 Excellent memories
 Very Good
 Enjoyable walks
 Very Helpful
 Lots of great work
 Look forward to the next stage
 Nice walks
 Fascinating place, we'll come again
 Keep up the maintenance. Well Done
 Very nice park
 Pleased we have found this place
 West's best kept secret
 Worth inspecting
 Very relaxing
 Most interesting
 Keep up good work, lovely clean toilets
 Well kept
 Terrific
 Inspirational
 Positive
 You beauty
 Rewarding visit
 A good place
 Great place
 Top stuff
 Very knowledgeable
 Really great
 Need more time
 Very informative
 Great trip
 Wonderful
 Efficient service and great resources
 Thanks for the info
 A great project
 A delight
 A wonderful project
 Good project
 Interesting
 Peaceful
 So interesting
 Nice to see disabled involved in project
 We'll come back
 Probably unique research into western development
 What happened to the west?
 Tops

Inspiring
 Excellent idea
 How wonderful
 Good work
 I had no idea you existed.
 Glad to see preservation of industrial heritage
 Love the garden
 Glad to be back in Victoria
 Thanks for your kindness
 Comrades great place
 Lovely
 Good to see
 Very enlightening
 Excellent set up

DISTRICT 3280
 Bangladesh
Group Study
Exchange Team
 1994-95

RTN. ENGR. MOHAMMAD IBRAHIM
 Team Leader
 DG's Zonal Aide '94-95
 P.O. Dist 3280
 Rotary Club of Metropolitan Dhaka
 Executive Engineer, DPHE
 Khulna Division
 45, Bagmara Main Road, Khulna-9100
 Tel: (0) 041-21850 (R) 041-23121
 Fax: 880-2-041-21356

EYED SADEQUE M ALI
 Team Member
 Sponsor Club: RC Metropolitan Dhaka
 Distribution Manager
 Ciba-Galby (Bangladesh) Limited
 House 50, Road-2A, Drummond P.L.A.
 Dhaka-1209 Bangladesh
 Tel: 880-2-865302-8, 865238
 Fax: 880-2-864156, 863489

ENGR. KALIMUR RAHMAN
 Team Member
 Sponsor Club: RC of Chittagong Midtown
 Factory Manager
 SINGER Bangladesh Limited
 223, Baizid Bostami Road, Chittagong
 Tel: 880-31-210335
 Fax: 880-31-225661

SALIM SAJJAD HAQUE
 Team Member
 Sponsor Club: RC of Dhaka South
 Administrative Officer
 Bangladesh Academy of Sciences
 18/C, Talabag, Sulairabad
 Dhaka-1207, Bangladesh
 Tel: 880-2-812337
 Fax: 880-2-817663

M. SAJJAD RAHMAN
 Team Member
 Sponsor Club: RC of Dhaka South, West
 Customer Relations Officer
 ANZ Grays Bank Ltd
 2, Dhaka Commercial Area
 P.O. Box 189, Dhaka-1000
 Tel: 880-2-802391-97
 Fax: 880-2-833625

Group business card left by Rotary Club members of District 3280, Bangladesh, 1995.

MISSION STATEMENT

Melbourne's Living Museum of the West is a community museum which actively involves the people of Melbourne's west and others in documenting, preserving and interpreting the richness and depth of the region's social industrial and environmental history.

AIMS & OBJECTIVES

The purposes for which Melbourne's Living Museum of the West Incorporated is established are:-

1. To establish a permanent Ecomuseum within the context of Melbourne's Western Region, a concept whereby the total community, its environment and its heritage are considered as part of the Museum, focussing the main emphasis on the people of the region rather than on artefacts, and operating from one or more fixed bases throughout the region.
2. To develop a greater understanding of the history and culture of Aboriginal and non-Aboriginal peoples and the environment of Melbourne's Western Region.
3. To record and present the history of working people in Melbourne's Western Region, up to the present day.
4. To involve the people of the region in the collection, research and presentation of this history.
5. To use a wide range of presentation methods, including exhibitions, video, publications, theatre, public events, and other participatory activities.
6. To be a multi-cultural museum.
7. To create a mobile museum service for Melbourne's Western Region.
8. To relate the historic sites and structures of the region to the story of the people of the region.
9. To develop a Heritage Resource Centre for the region.
10. To undertake linking and bridging activities with other groups, projects and institutions in the Western Region.
11. To act as a catalyst to development of Ecomuseum activity in Australia.
12. To develop and promote community museum activity which is interactive and innovative.
13. To develop the techniques of presenting exhibitions and related activities as effective communication devices.
14. To undertake pilot projects in a number of areas within the Ecomuseum context on an experimental basis.

MELBOURNE'S LIVING MUSEUM OF THE WEST

FINANCIAL REPORTS

AUDITOR'S REPORT

6 Tenterden Street
SPOTSWOOD VIC 3015

To the Members of
Melbourne's Living Museum
of the West Incorporated

I have examined the books of account and records of the Museum and in my opinion the accompanying statements ie. Balance Sheet and Income and Expenditure Statements have been constructed so as to give a true and fair view of the financial position of Melbourne's Living Museum of the West as at 31st December 1995.

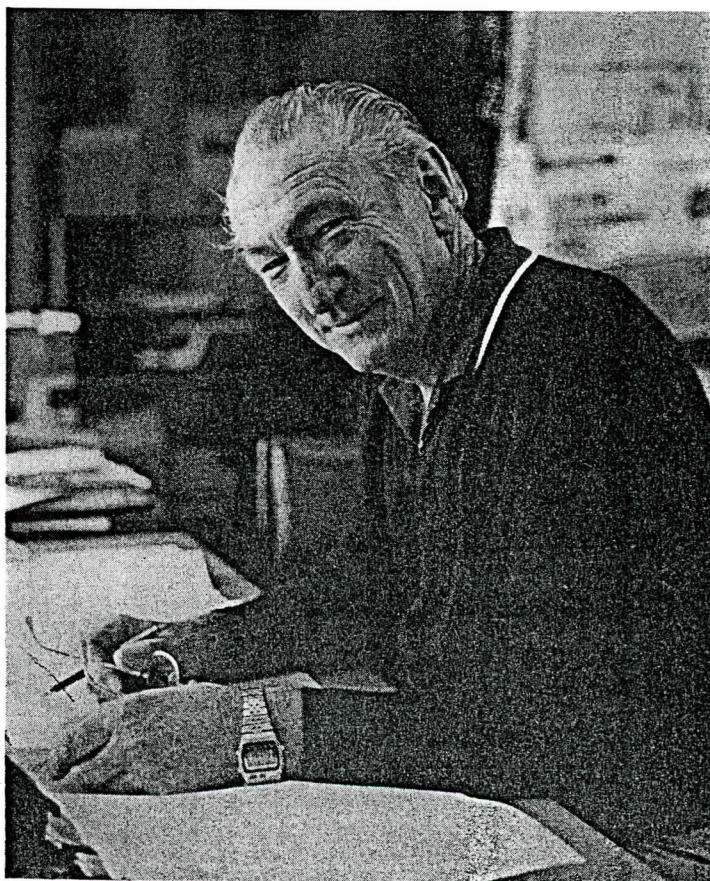
I would like to thank Peter Haffenden, Geoffrey Dent and staff for their co-operation and assistance in the preparation of these statements.

Yours faithfully



Ron Angwin, FCPA

15th April 1996



**MELBOURNE'S LIVING MUSEUM OF THE WEST INC.
BALANCE SHEET
AS AT DECEMBER 31 1995**

1994		1995
\$	<u>Current Assets</u>	\$
	<u>Cash On Hand</u> -Kiosk 179.3	
100	-Change Float <u>100</u>	279.3
1412.69	<u>Cash At Bank</u> -General 23622.1	
20259.55	-Savings <u>5107.56</u>	28729.66
803.3	<u>Debtors</u> -Publications 0	
	-Administration 2069.73	
2000	-Projects 0	
11436	-Consultancy 23299.97	
	-KGT <u>6514.1</u>	31883.8
24699.99	<u>Stock</u> -Publications 16104.5	
3503927	-Work in Progress 42306.16	
326.44	-Kiosk <u>417.09</u>	58827.75
5000	<u>Investments</u> -Term Deposits 20000	
	<u>Fixed Assets</u> -Cost NOTE 2. 173330.14	
	-Prov. for Dep. <u>48856.63</u>	
11745	-WDV as at 31/12/95	<u>124473.51</u>
112822.24	<u>TOTAL ASSETS</u>	264194.02
	<u>Current Liabilities</u>	
3542.03	Creditors -Living Museum 6515.9	
	-KGT 3557.44	
	-KGT Maribynong <u>3042.46</u>	13115.8
	<u>Long Term Liabilities</u>	
	Creditors K.G.T. Plant NOTE 3. 75177.49	
35039.27	Acc'ls/Prov's -Project Funds Unexpended 42306.16	
5000	-Grants In Advance 10000	
6191.23	-Stock Adjustment 6366.58	
12210	-Annual Leave 19125	
2648	-Sick Leave 7463	
6825	-Long Service Leave 13825	
	-K.G.T.Plant Interest Accr'd <u>10213.68</u>	<u>109299.42</u>
71455.51	<u>TOTAL LIABILITIES</u>	<u>197592.71</u>
41366.73	<u>NET ASSETS</u>	<u>66601.31</u>
	<u>Trust Funds</u>	
41236.8	Balance as at 31/12/94 41366.73 NOTE 1.	
	Add Plant Adjustment <u>2787.32</u>	44154.05
1129.93	Surplus/Deficit <u>22447.26</u>	
4136673	<u>TOTAL TRUST FUNDS</u>	<u>66601.31</u>

MELBOURNE'S LIVING MUSEUM OF THE WEST INC.
 STATEMENT OF INCOME & EXPENDITURE
 For the Year Ended 31 December 1995

CONSOLIDATED ACCOUNTS

1994		1995
\$	<u>Income</u>	\$
170317.47	Core Operations	192842.99
99269.00	Projects	130491.65
94336.88	Consultancies	129577.52
48445.05	Training Programs	80800
66944.74	Koorie Gardening Project	183010.52
479313.14	TOTAL INCOME	716722.68
	<u>Expenditure</u>	
148059.28	Core Operations	172936.12
92393.45	Projects	141147.7
98736.26	Consultancies	128681.06
66520.98	Training Programs	79535.39
72473.24	Koorie Gardening Project	171975.15
478183.21	TOTAL EXPENDITURE	694275.42
1129.93	SURPLUS/(DEFICIT)	22447.26

**MELBOURNE'S LIVING MUSEUM OF THE WEST INC.
STATEMENT OF INCOME & EXPENDITURE
For the Year Ended 31 December 1995**

CORE OPERATIONS

1994	<u>Income</u>	1995
\$		\$
75800.53	Administration Services	87130.1
60.00	Donations	19.85
83000.00	Grants	83000
305.20	Interest Bank	447.49
1626.48	Term Deposit	189.07
3756.45	Kiosk	5381.95
360.00	Membership	745
759.75	Photocopying	
656.06	Sales Publications	4338
3458.00	Seminars & Tours	3420.13
535.00	Other-Professional Services	7000
	Sundry Income	1171.4
170317.47	TOTAL INCOME	192842.99
	<u>Expenditure</u>	
-350.00	Accounting/Audit Fees	700
704.00	Advertising/Promotions	3238.45
1225.80	Bank Charges	1667.53
1100.00	Cleaning	1430
982.00	Depreciation	4101.8
	Equipment	4221.83
	Equipment hire	1729.5
794.42	Exhibition Materials	782.93
868.80	Gas	1351.45
17116.00	Increase Annual Leave Provision	16802
550.00	Sick Leave Provision	4080
	Long Service Leave	7000
	Stock adjust. provision	3000
1454.30	Insurance General	2629.55
1201.12	Workcare	-141.63
3700.18	Kiosk Expenses	4850.75
3395.25	Photocopying	1380.51
	Photographic Materials	177.39
1298.88	Services	856.94
1415.95	Postage	1850.6
3434.09	Power/Light	4604.01
	Printing	2462.25
1527.75	Professional Services	2630
988.10	Publications	4091.31
560.00	Refreshments/Entertainment	1822.65
403.00	Registrations/Subscriptions	585
495.00	Repairs/Maint'ce	305
89552.88	Salaries	78861.67
741.00	Security	788
1589.45	Staff Amenities	2776.83
2992.16	Stationery	2213.03
3642.75	Superannuation	2920.73
51.00	Sundry Expenses	215
3327.30	Telephone	4916.42
1144.00	Training/Work Experience	1000
2154.10	Travel	1034.62
148059.28	TOTAL EXPENDITURE	172936.12
22258.19	SURPLUS(DEFICIT)	19906.87

MELBOURNE'S LIVING MUSEUM OF THE WEST INC.
 STATEMENT OF INCOME & EXPENDITURE
 For the Year Ended 31 December 1995

PROJECTS

1994		1995
\$		\$
	<u>Income</u>	
99269.00	Project Grants	130491.65
	<u>Expenditure</u>	
675.00	Accounting/Audit Fees	600
24644.18	Administration Services	35273.49
	Bank Charges	9.15
4559.76	Exhibition Materials	9600.2
522.22	Workcare	888.8
	Phone	384.55
	Photocopying	1087.68
2017.18	Photo Mat's/Serv's	2280.11
10821.20	Printing	
	Professional Services	24312.32
326.00	Publications	
1150.01	Refreshments/Entertainment	1345.5
44987.52	Salaries	61404.98
1583.80	Superannuation	2574.04
1106.58	Travel	<u>1386.88</u>
<u>92393.45</u>	TOTAL EXPENDITURE	<u>141147.70</u>
<u>6875.55</u>	SURPLUS/(DEFICIT)	<u>-10656.05</u>

**MELBOURNE'S LIVING MUSEUM OF THE WEST INC.
STATEMENT OF INCOME & EXPENDITURE
For the Year Ended 31 December 1995**

CONSULTANCIES

1994		1995	
\$	<u>Income</u>	\$	
94336.88	Fees for Service	129577.52	129577.52
	<u>Expenditure</u>		
850.00	Accounting/Audit Fees	850	
23269.65	Administration Services	20401.77	
1280.00	Advertising	2221.66	
38.56	Bank Charges	59.49	
204.00	Equipment		
3071.45	Exhibition Materials	3691.66	
	Gas		
	Insurance General		
705.00	Workcare	1059.72	
	Photocopying	1296.84	
1413.73	Photo Mat's/Serv's	3585.23	
	Postage		
	Power/Light		
2005.00	Professional Services	11716.55	
280.00	Publications		
	Refreshments/Entertainment	740	
100.00	Regist's/Subs	2000	
60733.15	Salaries	75223.12	
36.00	Seminars	76	
113.95	Stationery		
68.50	Sundry Expenses		
2137.69	Superannuation	3069.04	
	Telephone		
2429.58	Travel	<u>2689.98</u>	
<u>98736.26</u>	TOTAL EXPENDITURE		<u>128681.06</u>
<u>-4399.38</u>	SURPLUS/(DEFICIT)		<u>896.46</u>

**MELBOURNE'S LIVING MUSEUM OF THE WEST INC.
STATEMENT OF INCOME & EXPENDITURE
For the Year Ended 31 December 1995**

TRAINING

1994		1995
\$	<u>Income</u>	\$
9960.00	Project Grants	
38485.05	Professional Services	80800
48445.05	TOTAL INCOME	80800.00
	 <u>Expenditure</u>	
700.00	Accounting/Audit Fees	650
17478.51	Administration Services	12380.57
460.00	Equipment Hire	
7135.95	Exhibition Materials	17540.75
	Insurance General	
456.95	Workcare	341.85
-112.00	Maintenance	
	Photocopying	418.34
881.05	Photo Mat's/Serv's	877.16
	Professional Services	19997.5
108.45	Publications	
365.00	Refreshments/Ent.	270.35
36716.58	Salaries	23617.3
1386.04	Superannuation	990.01
	Training/Work Experience	1864.12
944.45	Travel	<u>587.44</u>
<u>66520.98</u>	TOTAL EXPENDITURE	<u>79535.39</u>
<u>-18075.93</u>	SURPLUS/(DEFICIT)	<u>1264.61</u>

**MELBOURNE'S LIVING MUSEUM OF THE WEST INC.
STATEMENT OF INCOME & EXPENDITURE
For the Year Ended 31 December 1995**

KOORIE GARDENING TEAM

1994	<u>Income</u>	1995	
\$		\$	
42500.00	Grants - Project	119375.00	
23750.00	Professional Services	62556.53	
694.74	Interest Received	1078.99	
66944.74	TOTAL INCOME	183010.52	183010.52

Expenditure

500.00	Accounting & Audit Fee	1000.00 -	
10408.19	Administration Services	29034.20 -	
224.14	Bank Charges	728.76 -	
1000.00	Depreciation	7070.15 -	
6461.82	Equipment	27753.62 -	
	Fuel	10593.37 -	
	Increase Ann. Lve Prov.	2323	
	Sick Lve Prov	735 -	
	Lease	1200 -	
9832.01	Materials	22844.42	
266.86	Insurance - General	575.00 -	
378.61	- Workcare	137.70 -	
4975.61	Motor Veh. Exp's	426.00 -	
	Photocopying		
258.30	Photo Mat's/Serv's		
	Postage	90.00 -	
	Professional Services	9860.40 -	
	Program Support	306 -	
343.00	Repairs/Maintenance	8648.52 -	
32615.95	Salaries	45178.69 -	
2479.87	Staff Amen./Prot. Clothing		
	Sub contractors	2082 -	
297.55	Stationery		
	Sundry Expenses	93.95 -	
1156.03	Superannuation	1294.37 -	
1268.00	Training/Work Experience		
7.30	Travelling		
	Telephone	2345.62 -	
	Waste disposal	151.13 -	
72473.24	TOTAL EXPENDITURE	171975.15	171975.15
-5528.50	SURPLUS/(DEFICIT)		11035.37

Notes to the Balance Sheet

NOTE (1)

TRUST FUNDS

The 1994 balance has been adjusted to bring to account the purchase of KGT equipment not previously notified as acquired but has been recorded in the KGT plant register.

The adjustment is as follows:

Balance 1994	41,336.73
Add Plant Adjustment	<u>2,787.32</u>
Adjusted 1994 Balance	\$ 44,154.05

NOTE (3)

The Long Term Creditors / Provision for Plant Interest Accrued represent the purchase of an Antonio Carraro Mower and Accessories on a 3 Year Lease/ Buy contract.

The total purchase price is:

Capital Cost	82,014.00
Interest	<u>11,139.24</u>
	\$93,153.24

The total amount has been recorded in the KGT plant register and has been depreciated accordingly

CONTINGENT LIABILITIES - \$24,523.94

To be incorporated in the accounts as and when required.
Salaries for back pay currently subject to legal interpretation.

FREE CONCERTS

Hearthealth SONGS OF WORKING LIFE

Sunday 2-4 pm
19 November 1995
Danny Spooner

*
Victorian Trade
Union Choir

CONCERTS held
at Pipemakers Park
Van Ness Avenue,
Maribyrnong

Sunday 2-4 pm
26 November 1995
Kavisha Mazella
Matthew Arnold

*
Brunswick
Women's Choir

Melways Ref:
28 B10
Enquiries
on 9318 3544



Raymond
"I have to breathe freely to sing"

MELBOURNE'S LIVING MUSEUM OF THE WEST

NOTE (2)

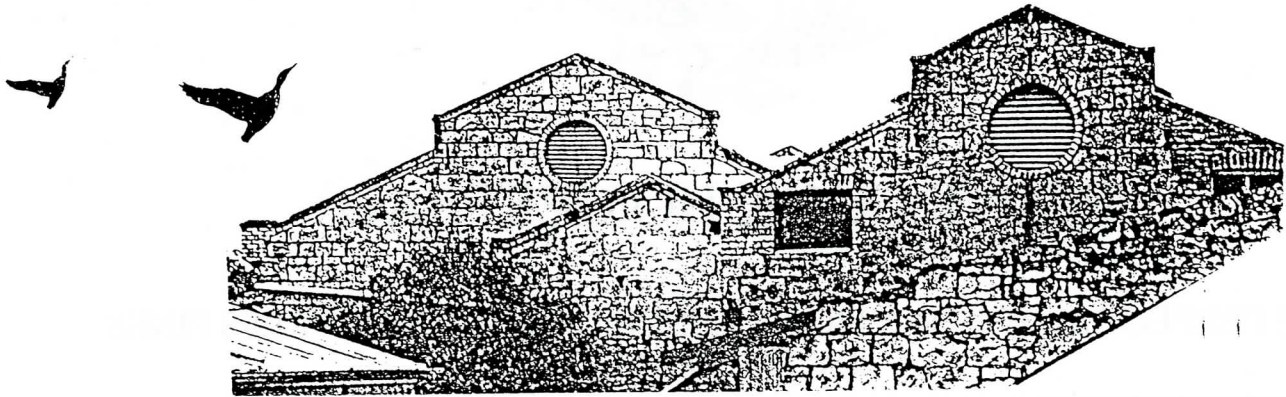
MELBOURNE LIVING MUSEUM OF THE WEST

NOTES TO BALANCE SHEET

FIXED ASSETS

	<u>COST</u>	<u>PROV. DEP.</u>	<u>WDV 1995</u>
<u>MLMW OFF. FURN./EQUIP.</u>			
BALANCE 1994	41545	34800	6745
DEPRECIATION 1995	<u>-</u>	<u>1349</u>	<u>-1349</u>
PURCHASES 1995	<u>7156.8</u>	<u>36149</u>	<u>5396</u>
BALANCE 1995	<u>48701.8</u>	<u>38901.8</u>	<u>9800</u>
<u>KGT PLANT /EQUIPMENT</u>			
1994 ADJUSTED (See Note1)	4672	1884.68	2787.32
DEPRECIATION 1995	<u>-</u>	<u>1740.22</u>	<u>-1740.22</u>
PURCHASES 1995	<u>4672</u>	<u>3624.9</u>	<u>1047.1</u>
	<u>113956.34</u>	<u>4329.93</u>	<u>109626.41</u>
	<u>118628.34</u>	<u>7954.83</u>	<u>110673.51</u>
<u>KGT MOTOR VEHICLE</u>			
BALANCE 1994	6000	1000	5000
DEPRECIATION 1995	<u>-</u>	<u>1000</u>	<u>-1000</u>
	<u>6000</u>	<u>2000</u>	<u>4000</u>
TOTAL AS PER 1995 B/S	<u>173330.14</u>	<u>48856.63</u>	<u>124473.51</u>

REVEALING INSIGHTS INTO A LITTLE KNOWN SIDE OF MELBOURNE'S HISTORY!



MELBOURNE'S LIVING MUSEUM OF THE WEST

*...on an old industrial site of Pipemakers Park, situated on the banks of the Maribyrnong.
(MELWAYS Map 28, B10)*

2 minutes from Highpoint shopping centre. in a rural setting.

Views down the Maribyrnong Valley

Walking Trails along the river

Historic Garden

B.B.Q's

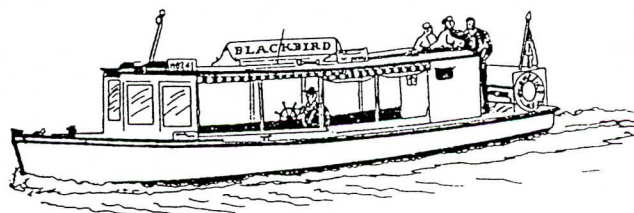
A popular Venue for seminars.

Amenities for disabled people

Jetty with access to river cruises



Talks Available, Living Museum Displays and Videos The Museum has many and varied resources relating to social, industrial and environmental history of Melbourne's west.



Melbourne's Living Museum of the West,
Pipemakers Park, Van Ness Avenue,
Maribyrnong 3032.

For any queries on tourism in the west, contact
Peter Haffenden, P.O. Box 60,
Highpoint City, Victoria, 3032.
Ph: (03) 318 3544 Fax: (03) 318 1039
e-mail: lmwbriak@peg.pegasus.oz.au



POINT COOK HOMESTEAD

THE PERFECT SPOT FOR A PICNIC LUNCH UNDER THE CYPRESS PINES
BY THE BEACH.



NOW

The homestead caters for **functions**. In its glorious surroundings it has been the site for weddings, christenings, small seminars, bird watching, artists, photographers, conferences, dinners or just the place for a cup of refreshing tea of coffee after a walk in the gardens.

By February 95' The Homestead will be offering **bed and breakfast's** with twin share accommodation overlooking the beach and a view of the city.

The homestead and stables are frequently being used for **craft fairs, demonstrations, exhibitions, music programs, children's programs** and as an art gallery.

There are many lovely spots for a **picnic** and a **BBQ** may be supplied on request.

The entry fee is \$3 for adults and \$2 concession.

HISTORY

Thomas Chirnside bought the homestead and land from Alexander Irvine in 1851. It was named after John Cooke, mate on 'The Rattlesnake', which charted Port Phillip Bay in 1836. The property was developed as a thoroughbred stud and the home of Thomas Chirnside.

In 1920 Point Cook was sold to the Dalrymple family who lived there for five years.

Currently The Homestead is privately leased and open to the public.

Kay Kelly PH: 395 1213 FAX: 395 1530
Point Cook Homestead Road, Point Cook.
Off Point Cook Road.
MELWAY REF MAP 208 H12

For any queries on tourism in the west, contact...

Peter Haffenden, P.O. Box 60,
Highpoint City, Victoria, 3032.
Ph: (03) 318 3544 Fax: (03) 318 1039
e-mail: lmwbriak@peg.pegasus.oz.au

BRIMBANK

I N D E P E N D E N T

VOL. 9 NO. 419 Tuesday 11 July 1995 47 McIntyre Road, Sunshine, Victoria, 3020. Western Independent Newspaper Group CAB AUDITED. P.O. Box 667, Sunshine 3020. 61,032 PRINTED WEEKLY PHONE: (03) 9312 5777 FAX: 9311 4327. PRICE: 20c.

BULLDOG 'BEAT UP' ROW



Tammy Hunter (left) and Jacqueline Moore ... two of the Koori Gardening Team members who will travel to Canada for an international conference next month. Photo: JOSEPH MASTROIANNI.

CITY of Maribyrnong Commissioner, Mr John Chessells, is likely to be reprimanded by Chief Commissioner, Ms Barbara Champion, after claims that he fuelled public speculation over the financial viability of the Footscray Football Club.

The meeting between Ms Champion and Mr Chessells follows the recent airing of the Bulldogs' financial position in last week's daily newspapers, which revealed the former Footscray council and the club shared a \$4 million loan.

The former council took out the loan in 1990 to help refurbish the John Gent stand at the Western Oval. The loan has come under discussion after the Maribyrnong City commissioners called on the Auditor-General to conduct a due diligence audit on the council.

In an article in last week's 'Herald Sun', Maribyrnong's Mr Chessells said that an Auditor-General's report detailing a range of financial deals made by the former council, would be available in two weeks.

Ms Champion told the Western Independent last week that there was nothing sinister about the loan which was taken out to redevelop a council asset. She said that ratepayers' money was not

By DAVID ADAMSON

being injected into the Footscray Football Club.

"The club is paying off half of a capital loan for the council on a building that is a council asset," Ms Champion said. "The club has been incorrectly attacked and I have no idea why someone would want to unsettle the Footscray Football Club at council's expense."

She said she could not understand why Mr Chessells would release information to the media confirming an Auditor-General's probe into the financial dealing between the former council and the Footscray Football Club.

"The comments made in the 'Herald Sun' were inappropriate and inaccurate," Ms Champion said. "I don't know what led him (Mr Chessells) to do such a thing but I will be having words with him."

Mr Chessells was interstate on leave and was unavailable for comment.

But, Footscray Football Club general manager, Mr Denis Galimberti, told the 'Western Independent' that the public airing of the loan details was "politically motivated".

*CONTINUED PAGE 3

Koori wisdom

THREE horticulture apprentices from the western suburbs-based Koori Gardening Team have been chosen to represent Australia's aboriginal people at an international conference in Canada in August.

The apprentices, Tammy Hunter, Jacqueline Moore and Darren Braybon, will attend the 'Spiritual Unity of Tribes' gathering to be held at the native village of Tagish in the Yukon hosted by the Tlingit and Haida Nations in honor of traditional indigenous wisdom. The gathering is a non-political, non-religious and non-profit making event.

In its fourth year of operation, the 11-member Koori Gardening Team has the longest retention rate for participants in any Koori training/employment program and is in the throes of setting up a retail/wholesale nursery at Pipemakers Park in Maribyrnong

later this year. Koori Gardening Team co-ordinator, Mr Neil Werrett who is employed at the Living Museum of the West which is the host employer of the team, managed by Western Region Group Training, said the team's selection at the Canadian conference was a major achievement.

"Essentially the team was set up to develop and foster young Koori people, to give them some opportunities. It's important to the perceptions of the Koori community," he said.

Mr Werrett said the apprentices' work tied in with their Koori culture and their knowledge of local indigenous plants in the west's grasslands.

"They are very keen to understand more about the grasslands, about Koori food plants, the fibre plants used by Aboriginal people," he said. - MARIA COIS

FOR LEGAL ADVICE?

ON
• Conveyancing & Finance • Wills & Estates
• Police Prosecutions • Motor Vehicle Accidents
• Contract Disputes & Debt Recovery
• General Advice and Assistance
Call for personal service
**TAYLORS LAKES SOLICITORS
CLARKSON & SOCIO
9390 9880**

ST ALBANS COMPLETE CAR CARE 29 ST ALBANS RD, ST ALBANS FOR GREAT SPECIALS



SEE PAGE 12

PH: 9367 4414, 9364 3244

Costa's Mitre10

OPEN 7
DAYS

Western Suburbs Timber
Hardware Paint Specialists.
Come in and check out our
GREAT SPECIALS!

WERRIBEE 55-59 CHERRY ST.

9741 2099

HOPPERS CROSSING 255 OLD GEELONG RD.

9749 6499

HOME & TRADE: 428 FRANCIS ST, BROOKLYN

9314 6322

HOLDEN RODEO

SAVE 1 Tonne

\$2,956



FROM ONLY \$16,990

Holden Rodeo
LET'S WORK

Kevin Dennis
HOLDEN

272 BALLARAT RD, BRAYBROOK 9311 6111

QUICK TRIM ONLY \$135

4 WEEK PROGRAM INCLUDES:

- ☆ 2 X 1 H TONING SESSIONS WEEKLY
- ☆ WEEKLY CONSULTATIONS
- ☆ HEALTHY EATING PLANS
- ☆ FAT MOBILISERS - 100% NATURAL

RELAX 'N' TRIM - 364 1178
218a MAIN RD, EAST, ST ALBANS

Melton BINGO Centre

SUNDAY DAY

SUNBURY LIONS CLUB

\$2.00 BOOKS—60 GAMES

38 x \$30 8 x \$40 7 x \$50 5 x \$60 1 x \$250 1 x \$700

Eyes down 1.00pm Finish 4.30pm

Come join us every Sunday!

Phone 9743 9710 for bookings
43 McKenzie St, Melton

The Mail

260 Barkly Street, Footscray

Phone 9688 5522 Fax 9689 9762

Classifieds 13-24-25 Fax 9793 5111

Combined Circulation 54,355 *PC

*Publishers Claim Incorporating Williamstown Advertiser & Altona - Laverton Mail.

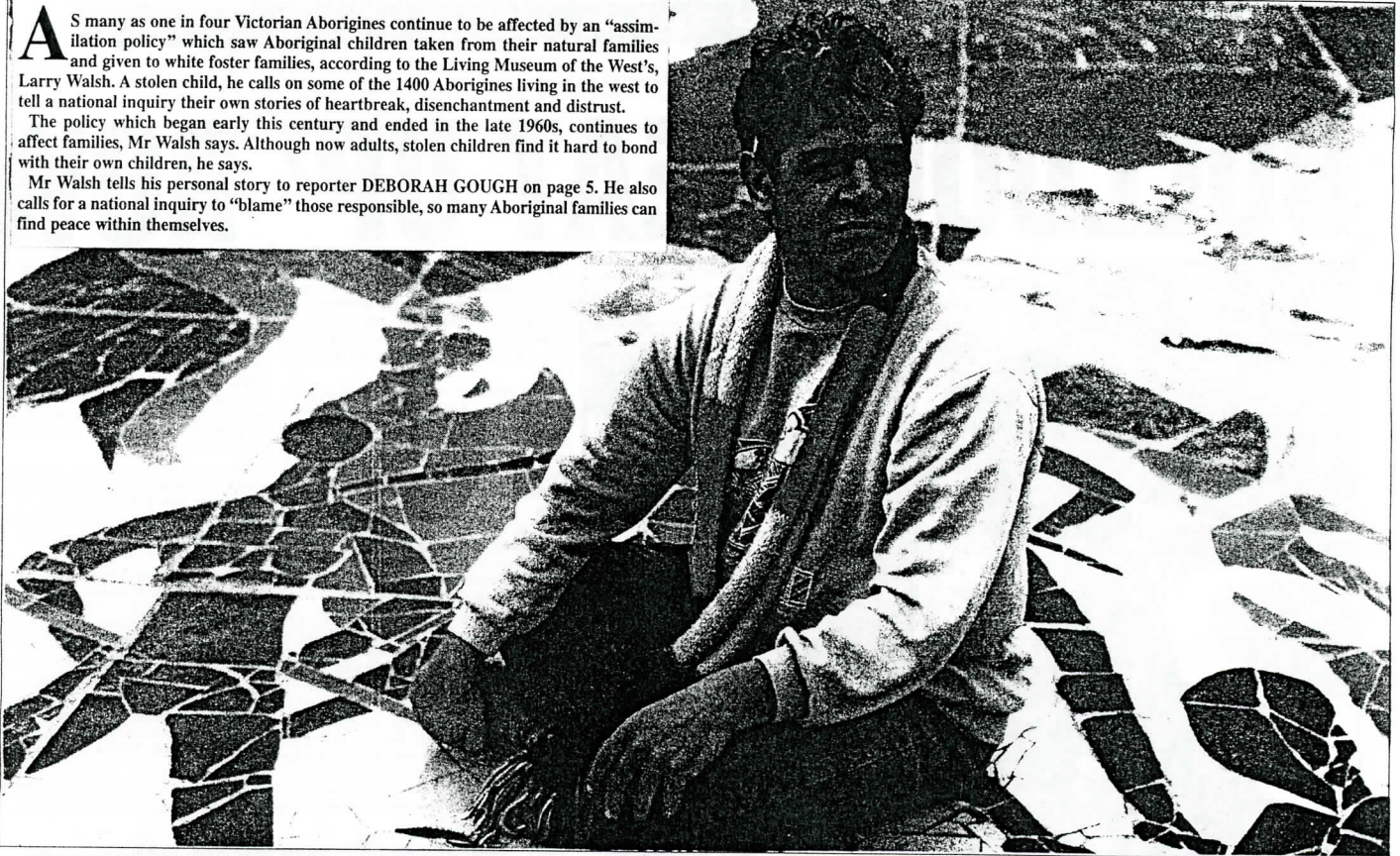
Circulating in the City Of Maribyrnong

Wednesday 24th May 1995 Price 30c

AS many as one in four Victorian Aborigines continue to be affected by an "assimilation policy" which saw Aboriginal children taken from their natural families and given to white foster families, according to the Living Museum of the West's, Larry Walsh. A stolen child, he calls on some of the 1400 Aborigines living in the west to tell a national inquiry their own stories of heartbreak, disenchantment and distrust.

The policy which began early this century and ended in the late 1960s, continues to affect families, Mr Walsh says. Although now adults, stolen children find it hard to bond with their own children, he says.

Mr Walsh tells his personal story to reporter DEBORAH GOUGH on page 5. He also calls for a national inquiry to "blame" those responsible, so many Aboriginal families can find peace within themselves.



JOBS ON LINE

NEWS DIGEST

- TRIBUTES FLOW IN FOR TEACHER: P7
- BIKE POLICE GO HEAD HUNTING P8
- STUDENTS TARGET LOCAL IDIOM: P10
- MOUTH ORGANISTS BLOW STRONG: P13

BO THE BEAR
Remember \$1 from our \$14 Special Classifieds goes to the Bone Marrow Donor Institute Inc.
*terms and conditions apply.
Call: 13-24-25

By Mark Phillips

Axe wielded in rates cut pledge

MARIBYRNONG Council will slash 80 jobs as part of its pledge to cut rates by 25 per cent over the next three years.

Residents will pay 7.5 per cent in 1996-97 and 2.5 per cent in 1997-98.

The combined 25 per cent reductions should result in Maribyrnong rates being only slightly above the Victorian average of \$300. Currently, Maribyrnong residents pay an average of \$450 a year in rates. The

cuts are outlined in the City of Maribyrnong's three-year corporate plan, Working Together, which released last week by the Minister for Local Government, Mr Hallam, and chief commissioner, Ms Barbara Champion.

The plan acknowledges rates paid in the former City of Footscray were too high and makes rate reductions the top priority of the new City of Maribyrnong.

Rates are high because of the high level of interest payments required to service council borrowings and inefficiencies of council services, Working Together says.

A three-point strategy will produce savings of \$5.8 million in the three year period and allow rate reductions.

The council is committed to reducing its annual debt servicing costs by \$1 mil-

lion by 1997-98. About 45 per cent of the debt comes from the Quay West project and the council promises to entirely liquidate the Quay West debt over the next three years by selling assets.

Competitive tendering will produce total savings of \$1.1 million by 1996-97 with \$17 million of council services to be tendered out in 1995-96.

■ Continued Page 3.

■ Focus on Law Week: P 22 ■ Motoring: P 26-28 ■ Real Estate: P 29-69 ■ Classifieds: P 70-82

SOLD THRU CLASSIFIEDS

Check out all the bargains available to you in today's Classified pages - save yourself time and money!

To book your Classified ad phone 13-24-25

COLOUR YOUR WINTER FOR FREE

CLARINS PARIS

When you purchase 2 Clarins products, you will receive a Clarins Eye shadow, Blush or foundation of your choice for free. Valued at up to \$39

(Selected colours only while stocks last or until 31.5.95)
Clarins Consultant available Tues-Sat plus Friday Nights

9399 9044
44 Douglas Pde, Williamstown
PARADE PHARMACY 265 Days a year

Family Law

Contemplating separation or divorce can be difficult and confusing. Peter Barry, an accredited Family Law Specialist and Family Lawyers Debra Stark and Rochelle Belcher are able to provide sensitive and expert assistance.

9397 2088 24 HOURS

HANNEBERY, BOYLE & PARTNERS
100 Douglas Parade, Williamstown 3016

Godfather's THE ROLLS ROYCE OF PIZZAS

Hot Pick Up Specials

Small \$4.90 Large \$8.90

Our large Pizzas are bigger than Pizza Haven & Pizza Hut, and our Jumbo is bigger than their family size.

FOOTSCRAY 9317 3177	ALTONA 9391 9300	NIDDRIE 9379 1100
SUNSHINE 9312 1700	ST ALBANS 9367 1100	MELTON 9747 9088

The Advocate

ANOTHER QUALITY FAIRFAX NEWSPAPER

260 Barkly Street, Footscray

Phone 688 5522 Fax 689 9762

Classifieds 13-24-25 Fax 793 5111

Circulating in the City Of Brimbank

Wednesday 31st May 1995 Price 30c



HELP BO THE BEAR FIGHT LEUKAEMIA

\$1 from our special \$14 Classifieds* package goes to the Bone Marrow Donor Institute Inc.

*Terms & conditions apply.

CALL 13-24-25



STRIKE UP THE BAND!

PAGE 3

DECIDING YOUR FUTURE

Pages 19-26



Picture: CRAIG CARILL

PHU Minh Tuan, of Footscray, had sparks flying as he cut through pipe at the former Hume Pipe factory recently. The factory is one of the oldest buildings in the western suburbs.

The pipes will form a section of a heritage trail planned as part of the Industrial Heritage Precinct development at Pipemaker's Park, Maribyrnong. About 30 previously-unemployed workers are helping to create the trail and bring the former pipe factory and meat cannery back to life.

About \$500,000 will be spent on the development, being supervised by the Living Museum of the West.

Melbourne Parks and Waterways will call for tenderers who wish to use the building, but the Living Museum would like to see it open to the public for exhibitions and performances. Report: Page 5.

RAAF STORE SOLD

By Deborah Gough

TOTTENHAM'S landmark and one of the west's largest vacant industrial properties, the Tottenham RAAF stores depot, has been sold for over \$8 million.

At what is generally considered to be the gateway between Footscray and Sunshine, the stores depot was sold to local private investors last week.

Industry sources said the 37.68 hectare site would be used for industrial purposes. Few other details of the future of the 21 warehouse buildings, extensive dining areas, barracks, training rooms, medical centres, maintenance buildings and a gatehouse were available.

The property includes 11 houses, sporting ovals, tennis courts and a swimming pool. It has boundaries on South Road and Ashley Street

and is close to Geelong Road. The sale boosts an awakening real estate market in the western suburbs. The industry sources said more than 290,000 square metres of space had been leased in a single six-month period recently. Sunshine real estate agent, Mr John Kontek, said the property was in an excellent position. This gave its new owners great development opportunities.

"It's particularly good land and it's in a central position. It's almost in the heart of Footscray, close to the station (Tottenham) - it really has a lot to offer," Mr Kontek said.

He added it was unfortunate the property could not be developed residentially.

The former air force base already has major tenants, including Target Australia Pty Ltd and Ausdoc, earning it annual rent of nearly \$650,000 - an average of \$35.25 a square metre.

SOLD THRU CLASSIFIEDS

Check out all the bargains available to you in today's Classified pages - **save yourself time and money!**

To book your Classified ad phone 13-24-25

AUTO SPRAY CANS
ALL CARS
ANY COLOUR
311 2306 311 5898
Olarens Shaw's
Paint Centre
28 Devonshire Rd, Sunshine
MOTOSPRAY

FOR URGENT ADVICE ON

- FAMILY LAW
- BUSINESS LAW

CONTACT
GRAEME FREEMAN
Accredited Family Law Specialist
PETER GUY
Accredited Business Law Specialist

KENNEDY GUY
BARRISTERS & SOLICITORS
20 Withers St. SUNSHINE
311 8511 ALL HOURS

LEGAL ACTION AND ADVICE

FAMILY LAW and DE FACTO RELATIONSHIPS
We offer specialist advice in all matters involving:

- SEPARATION
- DIVORCE
- CUSTODY
- ACCESS
- PROPERTY SETTLEMENTS

Speak to our accredited Family Law Specialist
Ernest Woolf PHONE: 689 8933
Cohen Woolf & Weinberg
Barristers and Solicitors
1st FLOOR, 215 BARKLY ST, FOOTSCRAY
also at
613 ST KILDA RD, MELBOURNE Ph: 521 2244

Godfather's THE ROLLS ROYCE OF PIZZAS

Hot Pick Up Specials
Small Large
\$4.90 \$8.90
Our large Pizzas are bigger than Pizza Haven & Pizza Hut, and our Jumbo is bigger than their family size.

FOOTSCRAY 9317 3177	ALTONA 9391 9300	NIDDRIE 9379 1100
SUNSHINE 9312 1700	ST ALBANS 9367 1100	MELTON 9747 9088

