

**International Harvester Company
of Australia Pty. Ltd.**

DANDENONG WORKS

HISTORY OF WORKS

DANDENONG WORKS

Dandenong Works was the second International Harvester Australian manufacturing plant, but the first to be constructed solely for the production of Motor Trucks.

- 1949 - Land Purchased and the building of Dandenong Works commenced.
- 1952 - Manufacture of motor trucks commenced at Dandenong Works with four (4) models of the 'L' series motor vehicles.
- 1953 - Start of negotiations between the Australian Department of the Army, the Design Establishment and International Harvester Engineers for the design and manufacture of a special General Service Motor Truck for use by the Australian Army.
Mock-up of such a vehicle was designed, built, and displayed in the same year.
- 1958 - After years of tortuous field trials the above vehicle was approved, and an order received for 100 of these vehicles, then known as the T.S.E. Mark II.
- 1959 - The above 100 vehicles were handed over to the Army to be further proved in "user" trials by the Australian Army and Weapons Research Organisation.
Also in this year, having been through the 'L' 'R' and 'S' series of Motor Trucks, production was started on the 'AA' series which offered to the public twenty-six (26) standard models (excluding the variations to wheel base), to this should be added the numerous special vehicles produced for P.M.G., the Army etc., and vehicles imported ex U.S.A.

HISTORY OF WORKS - 2

- 1962 - Dandenong Engineering Department transferred to our Geelong Works.
Also in this year production was started on the 'AB' series of Motor Trucks, this series being the first of our conventional vehicles to use locally produced sheet metal for both cab and front end.
Further in this year, the afore mentioned special Army vehicles were proved successful by extended trials and International Harvester received an initial order for 600 of these vehicles with improvements and additions.
These vehicles are now the official General Service Vehicle for the Australian Army and are known as the A.D.E. Mark III.
- 1963 - Production of the above vehicles commenced and an order for a further 610 of these vehicles received from the Department of Supply.

- Capital Additions -

£ 900,000

800,000

700,000

600,000

500,000

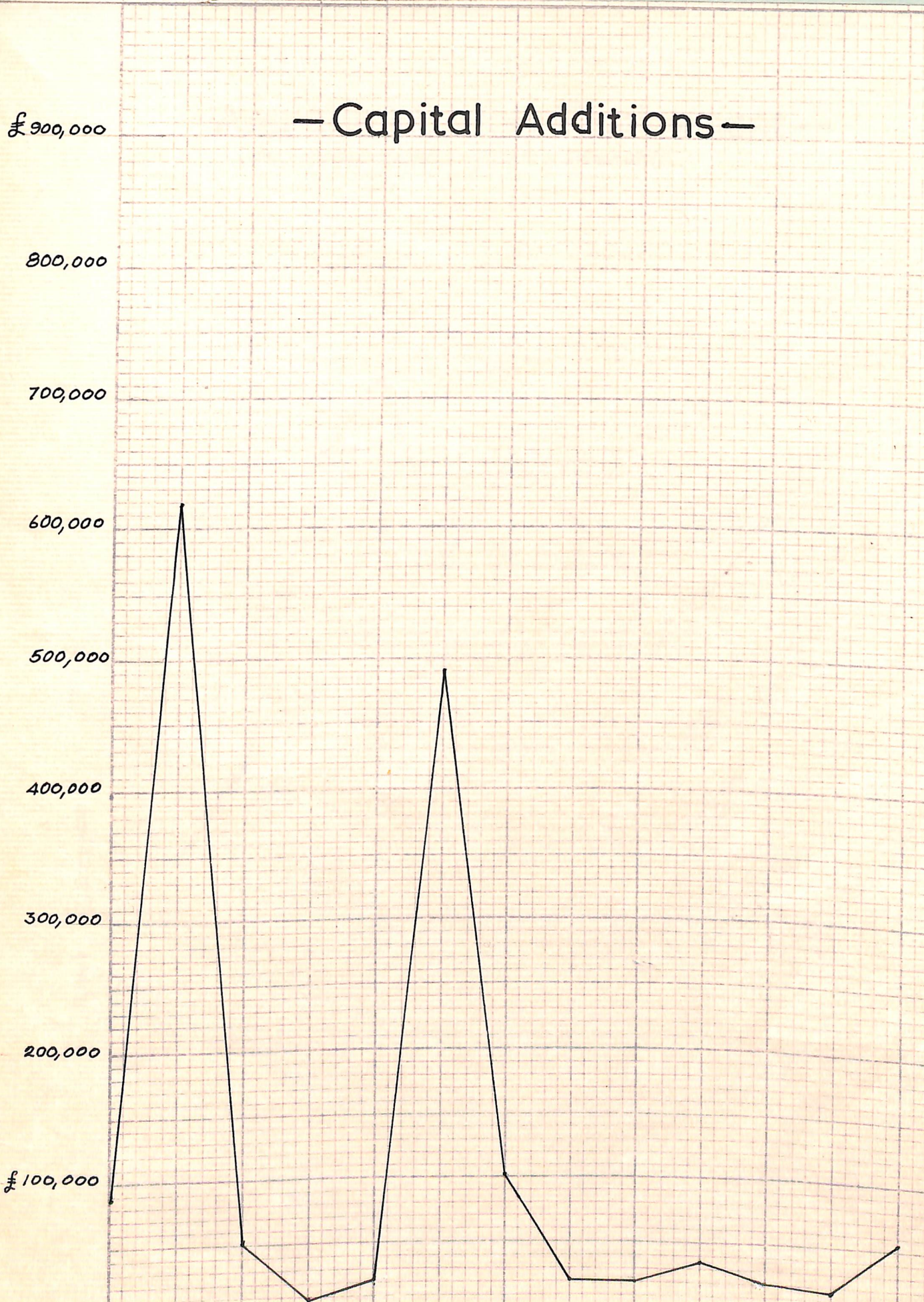
400,000

300,000

200,000

£ 100,000

1950-1 51-2 52-3 53-4 54-5 55-6 56-7 57-8 58-9 59-60 1961 1962 1963
- SEASON -



-Average Monthly Employment -

(NOT INCLUDING ENGINEERING DEPT & DRIVEWAY)

900

800

700

600

500

400

300

200

100

1962-3 53-4 54-5 55-6 56-7 57-8 58-9 59-60 1961 1962 1963
- SEASON -

PLANT
STRENGTH

100

200

300

400

500

600

700

800

900

— Prime Labour. —

£ 240,000

230,000

220,000

210,000

200,000

190,000

180,000

170,000

160,000

150,000

140,000

130,000

120,000

110,000

100,000

90,000

80,000

70,000

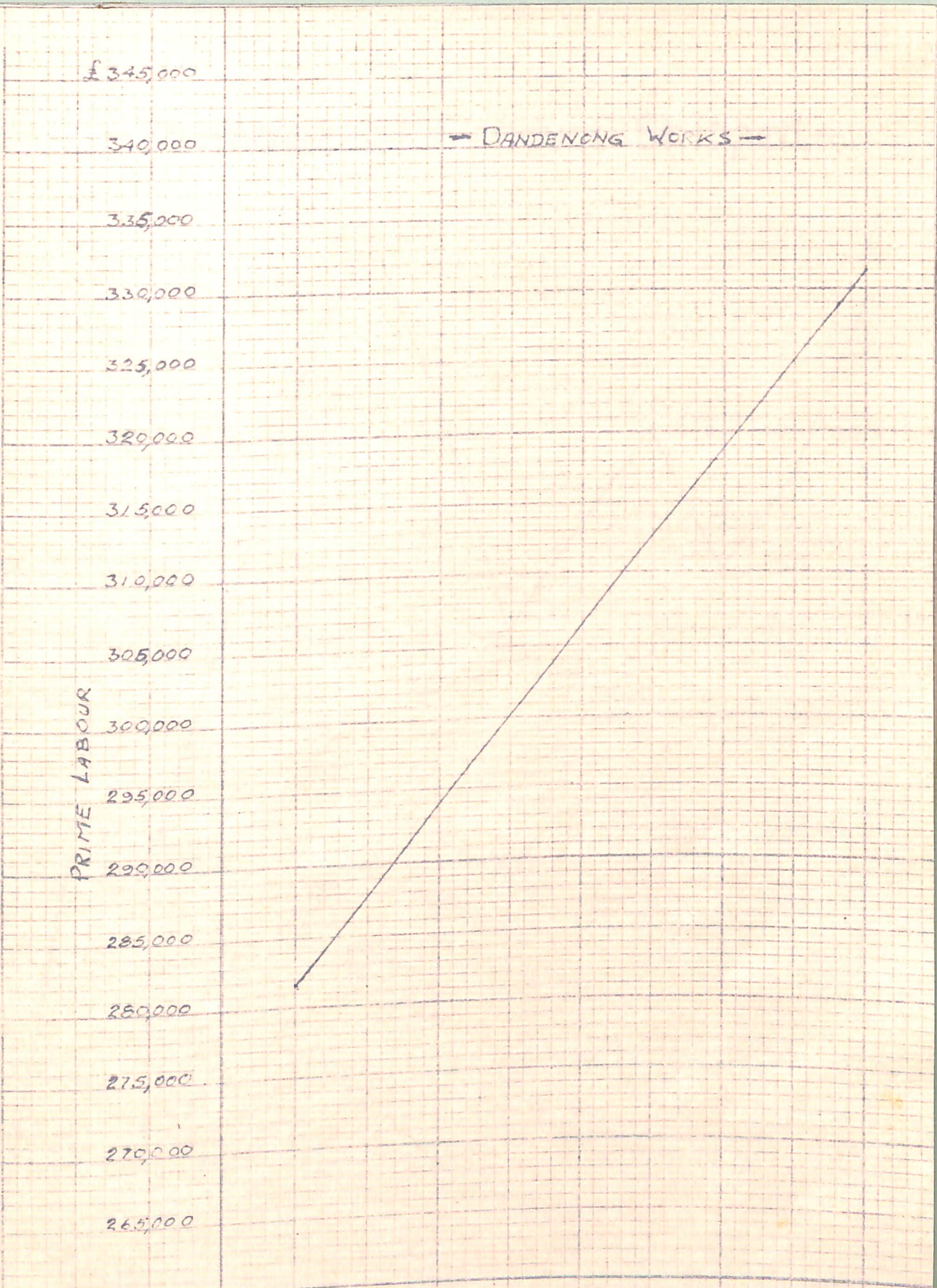
60,000

£ 50,000

1952-3 53-4 54-5 55-6 56-7 57-8 58-9 59-60 1961 1962 1963

— SEASON —





SEASON	1964	1965	1966	1967	1968
EST VEHICLE PROD ⁿ	7893	8288	8682	9077	9472
" PRIME	£281711	£294125	£306540	£318954	£331368
" TOTAL	731	746	761	776	791
" PLANT STRENGTH	582	596	610	624	638
" FACTORY "	35.69	35.49	35.31	35.14	34.98

=5% on 1964
added for back
2/60

-Tonnage of Product Shipped.-

18,000

16,000

14,000

12,000

10,000

8,000

6,000

4,000

2,000

1950-1 51-2 52-3 53-4 54-5 55-6 56-7 57-8 58-9 59-60 1961 1962 1963
-SEASON-

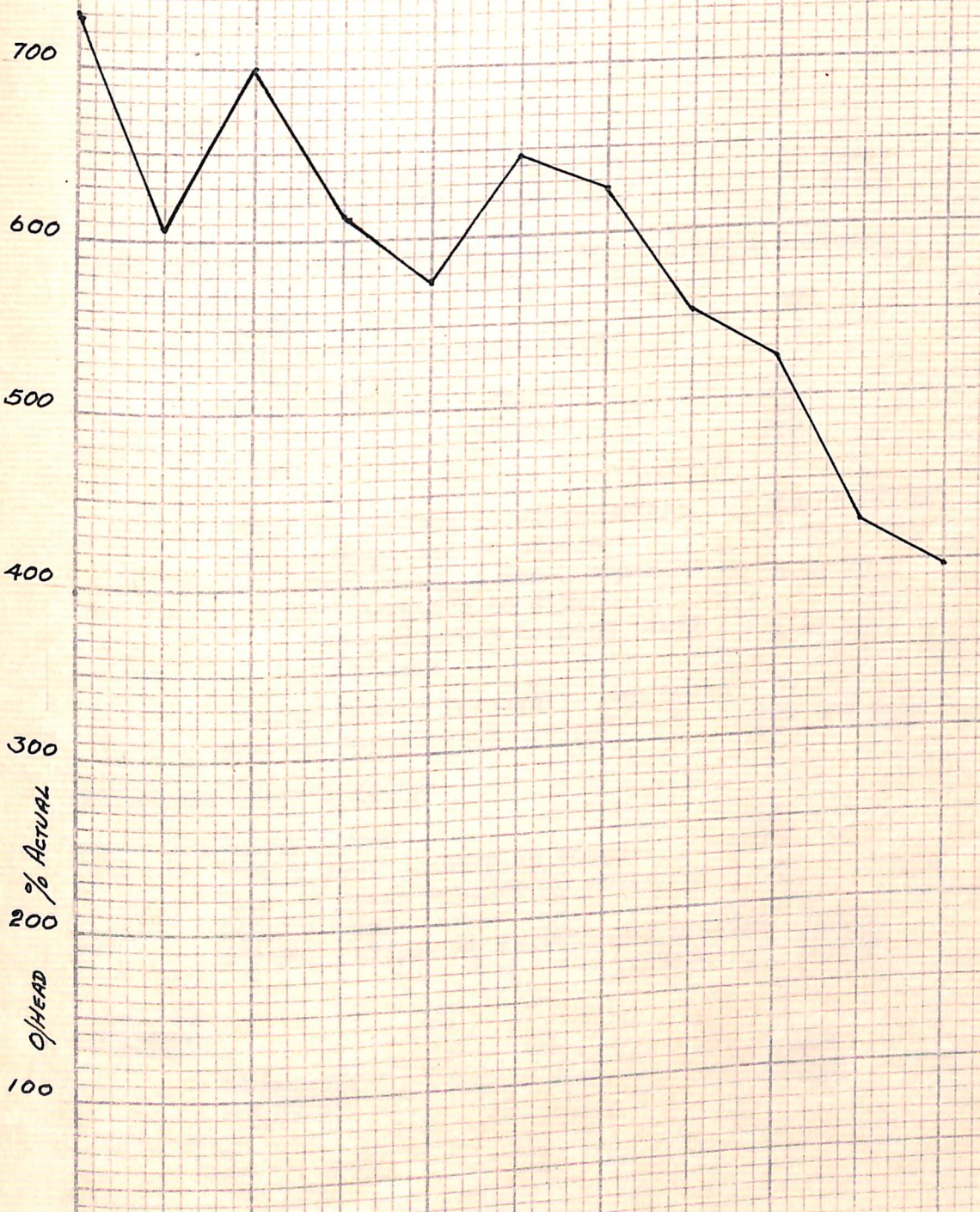
-TONS-



— Overhead % Actual. —

900
800
700
600
500
400
300
200
100
O/HEAD
% Actual

1952-3 53-4 54-5 55-6 56-7 57-8 58-9 59-60 1961 1962 1963
— SEASON —



PRESENT DAY GENERAL INFORMATION

DANDENONG WORKS

WORKS AREAS

(a) Total Area - Land	57 Acres
(b) Total Area - Under Roof	5 Acres

PLANT STRENGTH (Excluding Product Engineering & Driveway)

Managerial	32
Non-Managerial Supervisors	9
Leading Hands	18
Other employees - Male	567
Female	27
	<u>655</u>

Total	
Ratio Dayworkers to Pieceworkers	No Piecework
" Managerial to others	1 to 19.5
" Managerial & Non-Managerial)	1 to 10.1
Supervisors to others)	
Supervisors & Leading Hands)	1 to 22.1
to others	
Average Labour Turnover - per month	37
Average Absenteeism " " "	122 man days

EMPLOYMENT SERVICE RECORD

Under 1 year	194
Over 1 year - under 10 years	371
Over 10 years - under 20 years	81
Over 20 years	9
New Australians on Payroll-Non British	33.74%
" " " " British	12.83%

ACCIDENTS

Frequency	12.18
Severity	260.081

PRESENT DAY GENERAL INFORMATION - 2.

UNIONS REPRESENTING EMPLOYEES

NOTE: As per December 30th 1963 information.

Vehicle Builders Employees Federation.
Amalgamated Engineers Union of Australia.
Federation Storemans and Packers Union and
Office Unions, total in all seven (7) unions.

CAFETERIA

Seating Accommodation - 1 sitting	230
Average Number Hot Meals Served Daily	180
Profit/subsidy 1963 season	£1,416.0.0 (subsidy)
Profit/subsidy per meal 1963 season	9d. (subsidy)

MATERIAL PURCHASES 1963 - 4

	1963 (Actual)	1964 (Budget)
Local Collaterals	3,361,809	5,371,774
Paint	37,420	49,824
Tyres & Tubes	1,030,775	1,396,880
Geelong Works	950,883	1,232,835
Port Melbourne Works	139,877	508,745
U.S.A. Collaterals	2,787,626	2,894,230
Imported Trucks	1,053,903	1,031,289
U.K. Collaterals	396,864	257,509
	<u>£9,759,157</u>	<u>£12,743,086</u>

AVERAGE WEEKLY EARNINGS

Factory productive employees	£19. 0. 0.
Factory non-productive employees	£19. 3. 5.
Average hours worked on piecework per week	Nil
Average piecework bonus	Nil
Prime Labour Variance from Std. hours (Up to Dec. 1963)	9.76%
Workers Compensation Premiums 1963	£13,499. 0. 0.
" " per head "	£ 22. 5. 6.
Sick Pay Payments 1963	£ 7,740. 0. 0.
" " per head "	£ 12.15. 5.

OVERTIME

Actual -	1962		1963		1964	
	Nil Hrs.	"	Nil Hrs.	"	Nil Hrs.	"
Foundries		"	61,946	"	47,865	"
Factory Prod. Depts.	38,523	"	25,488	"	17,843	"
Service Depts.	12,642	"	12,499	"	10,061	"
Staff Depts.	7,386	"				
	<u>58,551 Hrs.</u>		<u>99,883 Hrs.</u>		<u>75,769 Hrs.</u>	
Total						

PRESENT DAY GENERAL INFORMATION - 3.

FARMED OUT WORK

Prime Labour Value 1963	£330. 8. 6.
" " " 1964 (Budget)	£6,982.10. 0.
Current Prime Labour Value/week	£148.11. 3.

PLANT CAPACITY

The original buildings (1952) provided for a build of 5,000 completed trucks per Annum. An extension was added in 1955 (Chicago Appropriation No. 19419) to provide for the assembly of 10,000 Motor Truck cabs per Annum.

No change has been made to the original 1952 Main Assembly Line, consequently the current capacity is an unbalanced one of : - 10,000 cabs per annum and 5,000 completed trucks per annum.

PRESENT DAY GENERAL INFORMATION - 3A.

PROPOSED NEW BUILDING & ADDITIONAL
EQUIPMENT APPROXIMATELY £75,000.

Dandenong Works was equipped to produce 5,000 trucks per annum in the year 1952, (refer to Chicago Appropriation No. 8972 of September 20, 1951) and actually produced 4080 trucks in first full year of production.

Production schedules have gradually increased to 6,500 in 1963, with a further increase of 7893 for 1964.

In 1955 an additional extension was made to the Works to enable Dandenong to assemble our own cabs, this extended area provides capacity to assemble 10,000 cabs per annum.

This illustrates the need for greater capacity on our sub-assembly and main chassis line assembly areas.

Therefore we have requested approval for a new building of 19,000 square feet, with an extended roof for loading and unloading collaterals. This new building will accommodate Production Stores, Receiving and Inspection departments, despatch area, M.K.D. packing area, tyre storage and assembly, cushion and seat squab assembly. The area vacated will be used to establish two (2) chassis assembly lines, one for 110 to 184 series, the other for 190, F.1800, Army A.D.E., all Tandem Trac, and AACO series.

The present main line assembly area will be maintained except a floor level conveyor must be used. We plan to bring the chassis down the two (2) chassis lines in a back to front position, complete the unit as far as possible, so that the cab and front end sheet metal will be the only items left to assemble on our present proposed main assembly line. This will allow rectification of operations on the balance of the main assembly line.

PRESENT DAY GENERAL INFORMATION - 4.

PRODUCTS

Model			Total Material Schedule 1964.
Scout	4x4		1,200
AB	110	114"	600
AB	110	126"	200
AB	120	114"	90
AB	120	126"	190
AB	120	114"	25
AB	120	126"	95
ABM	120		110
AB	130	129"	240
AB	130	153"	80
ABM	130		55
AB	148	153"	200
AB	150	153"	30
AB	150	171"	180
ABM	150		60
AB	151	153"	40
AB	151	171"	210
ABM	151		51
AB	160	153"	25
AB	160	171"	120
AB	160	189"	20
ABM	160		24
ABD	160	153"	15
ABD	160	171"	30
ABD	160	189"	-
AB	160	153"	150
AB	160	171"	50
AB	162	153"	70
AB	162	171"	260
AB	162	189"	50
ABD	162	153"	25
ABD	162	171"	5
ABD	162	189"	-
AB	164	153"	75
AB	164	171"	250
AB	164	189"	50
ABD	164	153"	20
ABD	164	171"	35
ABD	164	189"	20
AB	182	153"	165
AB	182	171"	225
AB	182	189"	30
ABD	182	153"	160

PRESENT DAY GENERAL INFORMATION - 5.

PRODUCTS - Continued....

Model	Total Material Schedule 1964.
ABD 182 171"	120
ABD 182 189"	20
ABT 182 178"	15
ABT 182 196"	5
AB 184 153"	200
AB 184 171"	100
ABD 184 153"	60
ABD 184 171"	40
AACO 172 118"	5
AACO 172 142"	30
AACO 172 166"	65
AACOD 172 118"	10
AACOD 172 142"	50
AACOD 172 166"	40
AACO 182 118"	10
AACO 182 142"	90
AACO 182 166"	40
AACOD 182 118"	10
AACOD 182 142"	80
AACOD 182 166"	30
AACOT 182 142"	10
AACOT 182 166"	10
AACOT 182 190"	5
AACOTD 182 142"	10
AACOTD 182 166"	5
AACOTD 182 190"	5
ARMY MARK 111	1,000
TOTAL DANDENONG MODELS	7,595
F-1800 SERIES	160
R & RD-192 "	100
RF & RDF-195 SERIES	16
R & RD-200 "	20
CO-200 "	-
RF-192 "	-
RF-190 6x6 "	2
TOTAL IMPORTED MODELS	298
GRAND TOTAL	7,893
PICK-UP BODY 114"	340
PICK-UP BODY 126"	170
PANEL VAN	270

A. M. M. M.

MOTOR TRUCK PRODUCTION STATISTICS

Season	Aust. Built Trucks	Imported Trucks	Total Produced		Average Rate Per Day	% Australian	Trucks Exported	% Exported
			City Road	Dandenong				
1950 - 1	1,376	-	1,376	-	17.61	100%	8	.58%
1951 - 2	4,228	-	2,231	1,997	17.0	100%	291	6.88%
1952 - 3	4,004	78	-	4,082	22.27	99%	168	4.12%
1953 - 4	4,851	494	-	5,345	28.29	91%	410	7.67%
1954 - 5	5,898	892	-	6,790	29.90	87%	659	9.71%
1955 - 6	6,425	751	-	7,176	25.90	90%	426	5.94%
1956 - 7	5,943	273	-	6,216	20.06	96%	559	8.99%
1957 - 8	4,565	251	-	4,816	21.65	95%	394	8.18%
1958 - 9	4,868	330	-	5,198	22.55	90%	365	7.02%
1959 - 60	4,893	520	-	5,413	19.84	90%	164	3.02%
1960 (4 Mths)	1,753	186	-	1,939	24.26	93%	115	5.93%
1961	4,437	324	-	4,761	27.11	96%	389	8.17%
1962	5,565	258	-	5,823		95%	219	3.76%
1963	6,175	332	-	6,507			314	4.83%
Total To Date	64,981	4,689	3,607	66,063			4,481	
			<u>Grand Total</u>	<u>69,670</u>				

J. Maneroft

INFORMATION TO BE USED ON CONDUCTED TOURS THROUGH PLANT

DANDENONG MOTOR TRUCK WORKS

1964

WORK STATISTICS

Property total area 57 Acres

Areas under roof 5 Acres

Total trucks produced at Dandenong Works up to October '63. 66,086

Capacity 1 Shift (Per annum) 10,000 Cabs
7,500 Chassis
6,000 Trucks

Present Output 600 yearly

Units exported to more than 30 countries (Mainly New Zealand, others to South Africa, Fiji, New Guinea, Ceylon, Burma, Hong Kong, Solomon Islands etc.) Average 650

Total Employees Approx. £765,000

Annual Wages Approx. 5,000 yearly

Visitors to Plant 17 Basic Model with over 100 different types.

Range of trucks produced 9 out up to 24 tons

Capacity of trucks produced 3,144,000 Kilo Watt Hrs.

Electric Power - consumed per year 1,585 Horse Power.
Sizes 1/4 H.P. to 230 H.P.

Electric Motors - connected load of 50 KVA
5 KVA to 20 KVA

Resistance Welders - 30 suspension sets each of 10 pedestal sets from 1,361 tons per annum

Coal Oil - For steam heating of mechanical wash, spray booths etc., and factory heating. 630,800 cubic feet per annum

Water usage per year 25,000,000 Gallons

Air for air tools, paints sprays, welding equipment etc. 700 C.F.M.

Construction of Dandenong Works completed in 1952

Dandenong Works extended works for increased production in 1956.

WORKS MANAGER

MR. M. C. LEE

DANDENONG WORKS

FEBRUARY 7, 1964

Listed below are the broad details of the Capital

additions since 1950 : -

1950 - 51
Bridge Crane etc.

Additional Land	279
Building & Building Equipment	302
Machine Tools	18,799
Other Machinery	6,593
Auxiliary Equipment (Tagged)	1,091
" (Untagged)	3,454
"	2,055
Office Furniture & Equipment	56,988
"L" Line tooling	<u>£89,561</u>

1951 - 52
Administration Bldg.
Assy Building etc.

Drains etc.	15,165
Land Improvements	79,201
Building Equipment (Class A)	89,128
" (Class B)	294,707
"	14,141
Power House Machinery	8,546
Machine Tools	24,921
Other Machinery	2,355
Automotive	38,958
Auxiliary Equipment (Tagged)	31,529
" (Untagged)	10,317
Office Furniture & Equipment	10,028
Tooling & Pattern Equipment	<u>£618,996</u>

continued.....

1952 - 53			2,016
Railway siding etc.	Drains		16,621
Front Entrances etc.	Land Improvements		2,389
	Building & Building Equipment (Class A)		15,288
	" " (Class B)		4,687
	"		4,402
	Power House Machinery		272
	Machine Tools		400
	Other Machinery		1,654
	Automotive		753
	Auxiliary Equipment (Tagged)		1,134
	" (Untagged)		2,042
	Office Furniture & Equipment		
	Tooling & Pattern Equipment		<u>£51,658</u>

1953 - 54			20
Front Entrance	Drains		26
	Land Improvements		218
	Buildings & Building Equipment (Class A)		928
	Machine Tools		128
	Other Machinery		2,498
	Automotive		1,168
	Auxiliary Equipment (Tagged)		1,709
	" (Untagged)		1,359
	Office Furniture & Equipment		1,934
	Tooling & Pattern Equipment		<u>£9,988</u>

1954 - 55			2,030
Driveaway etc.	Land Improvements		408
	Building & Building Equipment (Class A)		752
	" " (Class B)		1,690
	"		7,759
	Machine Tools		1,189
	Other Machinery		4,952
	Auxiliary Equipment (Tagged)		3,063
	" (Untagged)		
	Office Furniture & Equipment		<u>£21,843</u>

continued.....

1955 - 56		£ 25,942
Additions to Administration Building. Extension to Manufacturing Building Engineering Workshop etc.	(Land Improvements	43,652
	(Building & Building Equip. (Class A)	170,667
	(" " (Class B)	20,487
	(Power House Machinery	25,029
	(Machine Tools	43,585
	(Other Machinery	118,674
	(Auxiliary Equipment (Tagged)	35,800
	(" (Untagged)	6,393
	(Office Furniture & Equipment	<u>£490,228</u>

1956 - 57		11,071
Roads etc - Canteen extension. Extension to Administration building. Extension to Amenities Bldg. Extension to Manufacturing Building etc.	(Land Improvements	18,073
	(Building & Building Equipment (Class A)	14,742
	(" " (Class B)	86
	(Power House Machinery	6,952
	(Machine Tools	15,882
	(Other Machinery	2,317
	(Automotive	21,527
	(Auxiliary Equipment (Tagged)	8,137
	(Auxiliary Equipment (Untagged)	2,161
	(Office Furniture Equipment	<u>£100,948</u>

1957 - 58		220
←	(Land Improvements	1,332
	(Extension of Amenities Bldg.	134
	(Building & Building Equip. (Class A)	3,230
	(" " (Class B)	2,580
	(Machine Tools	3,056
	(Other Machinery	7,208
	(Auxiliary Equipment (Tagged)	4,699
	(" (Untagged)	<u>£22,459</u>
	(Office Furniture & Equipment	

continued.....

1958 - 59			518
Railway siding	Land Improvements		167
	Building & Building Equipment (Class A)		118
	" " (Class B)		168
	Machine Tools		7,928
	Other Machinery		2,880
	Automotive	(Tagged)	3,076
Water Curtain, Spray Booth etc.	Auxiliary Equipment	(Untagged)	3,959
	"		2,546
	Office Furniture & Equipment		<u>£21,360</u>

1959 - 60			51
Acoustic Ceiling etc.	Land Improvements		2,347
Rooms for Stylist	Building & Building Equipment (Class A)		280
Air Compressor	" " (Class B)		13,063
2 Fork Lift Trucks	Power House Machinery		2,755
160 Truck & Tray	Other Machinery		1,829
	Automotive		1,335
	Auxiliary Equipment (Tagged)		4,239
	" (Untagged)		601
	Office Furniture		<u>£26,500</u>

1960 - 4 months			320
Fire Hyd., Car Park	Land Improvements		30
Fan Medical Ctre.	Building & Building Equipment (Class A)		3,370
Bridge Crane, Motorise shutters.	Building & Build. Equip. (Class B)		1,225
Compressor Equip.	PowerHouse Machinery		774
	Other Machinery		1,745
	Auxiliary Equipment (Tagged)		1,220
	" (Untagged)		394
	Office furniture & equipment		<u>£9,078</u>

continued....

1961		60
Flood Lights, CarPark	Land Improvements	591
Office Mr. Craig Sound	Building & Building Equipment (Class A)	2,386
Proofing Ind. Rel.	Building & Building Equipment (Class B)	1,912
Bridge Crane etc.	Machine Tools	1,200
Johns Press Wheel	Other Machinery	753
Balancer etc.	Auxiliary Equipment (Tagged)	13,491
	" (Untagged)	1,353
	Office Furniture & Equipment	<u>£21,746</u>

1962		918
Lighting Offices	Building & Building Equipment (Class A)	325
Main Line Air Line	Building & Building Equipment (Class B)	13
P&J Lathe Recondition	Machine Tools	5,470
Air Hoists etc.	Other Machinery	1,759
AB.148 & tray	Automotive	40
	Auxiliary Equipment (Tagged)	7,472
	" (Untagged)	7
	Office Furniture & Equipment	<u>£ 16,004</u>

1963		3,794
Concrete outside storage	Land Improvements	65
Roof over T&T etc.	Building & Building Equipment (Class A)	6,575
Oil Filter etc.	Building & Building Equipment (Class B)	243
Milling, Drilling machine	Power House Machinery	16,980
	Machine Tools	12,083
	Other Machinery	3,109
AB 110, AB 160	Automotive	2,351
Airless spray	Auxiliary Equipment (Tagged)	8,558
Cooling tower etc.	" (Untagged)	1,892
	Office Furniture & Equipment	<u>£55,650</u>

WORKS MANAGER

DANDENONG WORKS

FEBRUARY 4, 1964

MR. M. C. LEE

EXPLANATION OF CERTAIN DETAILS
CONTAINED IN OUR JANUARY 1964 SURVEY

"Present Day General Information"

Page 1:

Average Absenteeism - The figure quoted of 122 man days per month is not really a high one when you consider the following facts: -

1. Each year we do have some workers, off from 3 to 6 months with major accidents or illnesses. For instance we have had one man (Mr. Bonk) off work for a period of 106 consecutive days as a result of a major chest operation.
2. If we assume that all employees other than Managerial, Supervisors and Leading Hands, take off the allowable 5 days sick period each year this would amount to: -

$$596 \times 5 = 2980 \text{ man days per year}$$

or

$$\frac{2980}{12} = 248 \text{ man days per month}$$

As it can be seen from the above our actual figure of 122 man days per month is a perfectly respectable one.

Employment Service Record - Our records show that the 10 to 20 years service group are the group from which we lose quite a few people annually by virtue of natural retirement or retirement for reasons of ill health. This fact would no doubt play a big part in keeping the number within this group on the low side.

Accidents - The figures quoted are for December 1963. We have no knowledge of the way the system is calculated in U.S.A.

continued...2

Present Day General Information - Continued.....

Page 2:

Material Purchases 1963-4 - NOTE: All figures quoted for 1964 are taken from the 1964 cash estimate, which represents the amount of money we expect to pay out for collateral and Burden Stores (Burden Stores est. £54,000) during the 1964 season. This estimate is based on Material Schedule No. 3.

Local Collaterals - The 1964 figure is higher than for 1963 by virtue of the increased programme, the influence of the Army Contract with its high local content, and the fact that we now obtain our 20" wheels and rims from a local source. The figures for 1964 (as these are taken from cash estimates) include £54,000 for Burden Stores.

Paint, Tyres & Tubes and Geelong Works - The increase here is a natural one due to increased programme and the influence of the Army Contract.

Port Melbourne Works - The increase here, no doubt reflects the manufacture by Port Melbourne of the cargo bodies for the Army Contract.

U.S.A. Collaterals & Imported Trucks - These are normal figures when assessed against the 1964 programme.

U.K. Collaterals - The figure for 1964 is lower than for 1963 despite the influence of the increased programme, mainly by virtue of the fact that we now procure all our 20" wheels from a local source, instead of from U.K. The 20" wheels are used on our AB. 160, 162 and 164 series motor trucks.

F. Muscroft

WORKS MANAGER

MR. M. C. LEE

WORKS SAFETY PERFORMANCE
FOR 1959 - 1963

DANDENONG WORKS

FEBRUARY 4, 1964

Australian Report - Dandenong Works

<u>Year</u>	<u>Severity Rate</u>	<u>Frequency Rate</u>	<u>5 Year Average Frequency Rate</u>
1959	342.57	43.28	32.95
1960	196.32	36.43	
1961	232.11	23.82	
1962	227.47	28.48	
1963	148.96	32.74	

Geelong Works

1959	1329	97	60
1960	742	63	
1961	577	38	
1962	862	40	
1963	1047	62	

American Report

1959	715	8.5	10.8
1960	546	7.1	9.3
1961	513	6.0	8.9
1962	530	6.0	8.6
1963	500	6.1	6.8

F. Muscroft