

Essential products that serve



**AUSTRALIA'S
TRANSPORTATION**

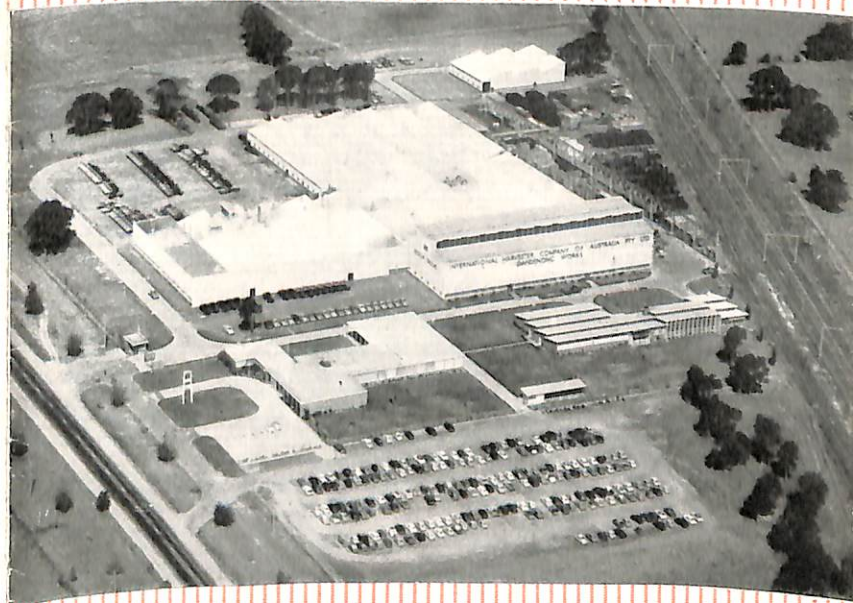


**INTERNATIONAL HARVESTER COMPANY
OF AUSTRALIA PTY. LTD.**

SAYS



**TO OUR
DANDENONG WORKS**



INTERNATIONAL HARVESTER
Builder of Essential Equipment
For Essential Work

We're glad you came

How many visitors do you have to your home every year? Ten, a hundred, a thousand? The Harvester family at Dandenong played host to more than 15,000 last year and expects to see many more in the next twelve months. What's the reason for the big guest list? Possibly it's because we keep open house here almost every working day and we like to have people call in and see what we do at Dandenong Works. Another reason is best expressed by our visitors who tell us "an important part of modern education is to know how money, materials, men and machines combine to produce the things which make for a more progressive life." So here's a welcome to you. We trust that your visit with us will be rewarding and enjoyable.

our background.

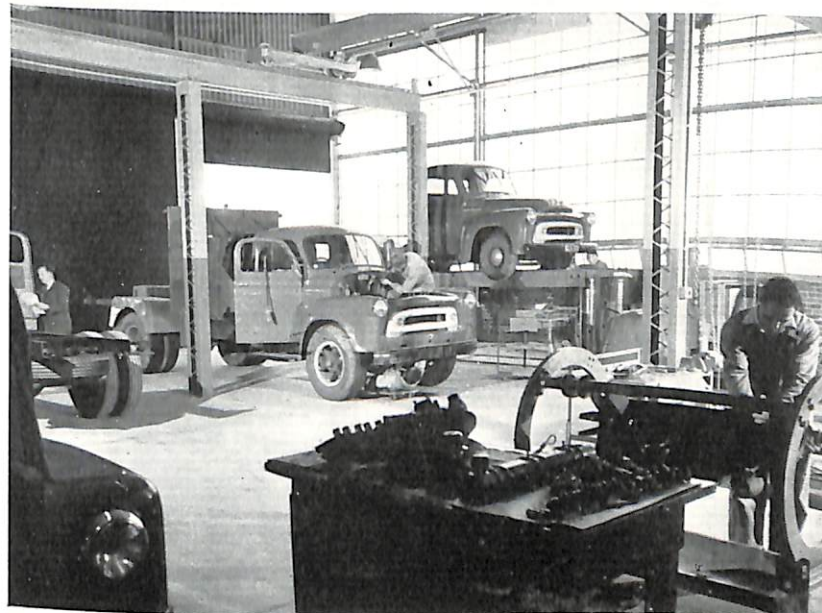
Knowing a little of this company's history may help you get a better picture of International Harvester's activities. This motor truck works was built in 1952. It stands on a 57 acre site and was one of the first big manufacturing industries to be established in the area.

Before Dandenong Works was built the company manufactured motor trucks at temporary premises in South Melbourne. Then, as now, some of the heavy engineering work was carried out in International Harvester's Geelong Works. The automotive section of Geelong Works was built in 1948. It consists of a modern grey iron foundry, still one of the best equipped in the Southern Hemisphere, a forge shop — and a well set-up machine shop. At Geelong the engine blocks, cylinder heads and manifolds are poured from molten metal and machined. These together with a number of other major castings are then forwarded to Dandenong Works for final machining and inclusion in the Australian-made International motor trucks. Geelong Works is already well known as the home of McCormick International and International tractors and a wide range of agricultural machines and construction equipment.

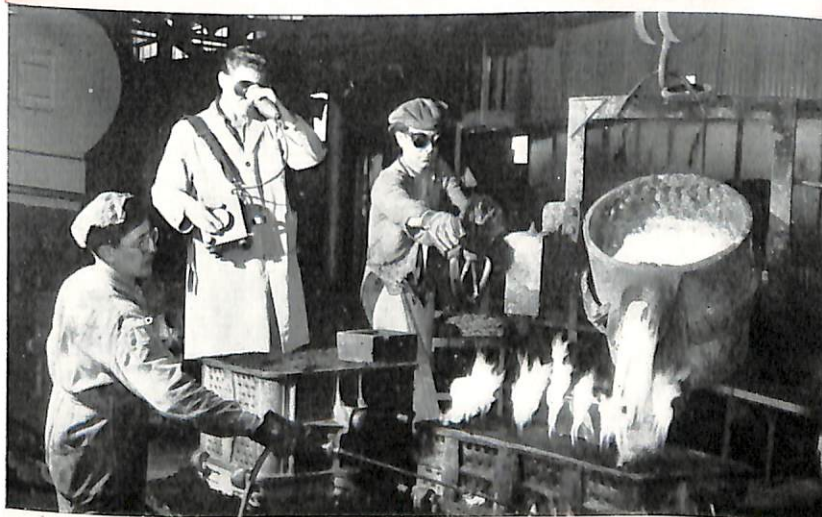
In fact, the name International Harvester has been a part of the Australian scene since 1902. Before that, and as far back as the 1850s, McCormick and Deering — the predecessor companies — were established as distributors of agricultural machines in Australia.



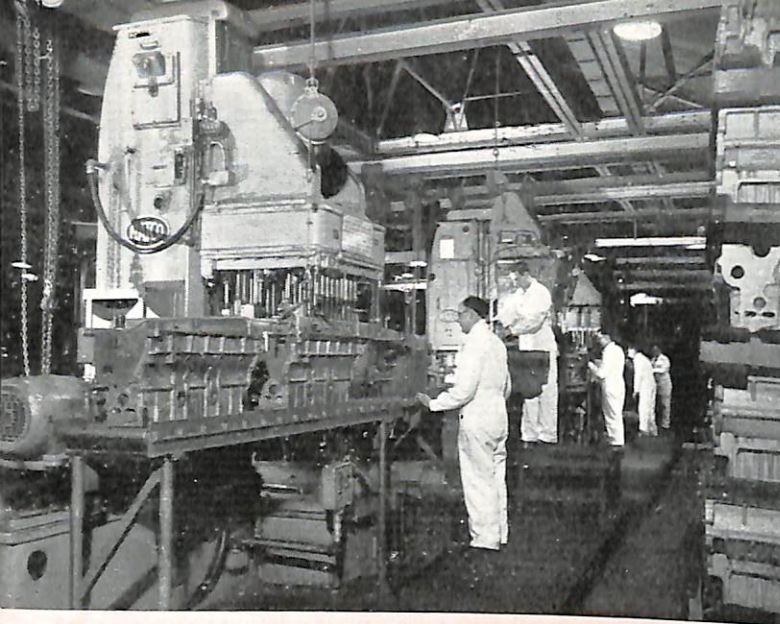
Hard driving and heavy loading test truck stamina in the "Trial by Torture" — an important part of the I.H. engineering research programme.



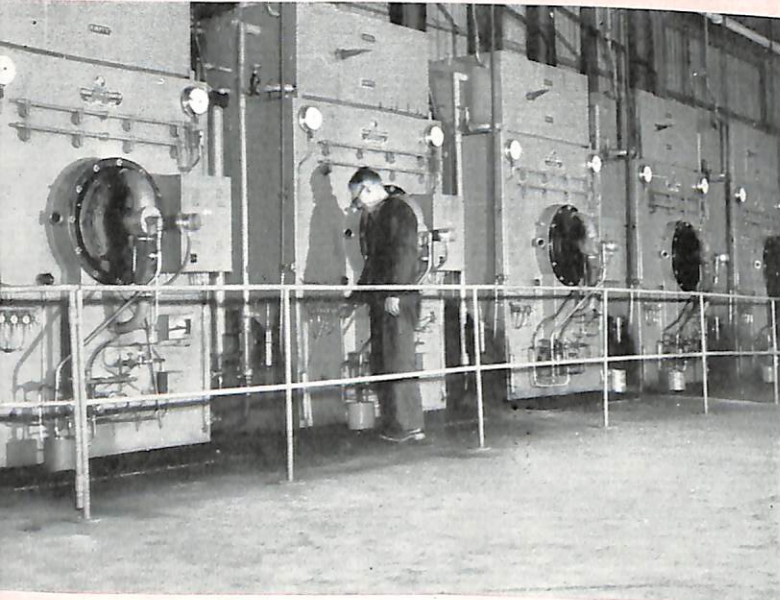
Within special workshops of Dandenong's engineering department, I.H. truck test fleet undergoes rigid inspection. Information gathered will form basic data for engineering research programme.



How hot is the molten metal pouring into this engine block mould? Technicians at I.H. Geelong Foundry can "tell by looking" with the visual pyrometer.



These Natco machine tools drill and tap 60 holes in truck engine crankcases in only two operations, processing 70 pieces every eight hours.



Steam heat for Dandenong production processes comes from this battery of oil-burning furnaces.



New truck engines on Dandenong Works production line nearing completion and moving towards the test benches where engines are run and final adjustments made.

BUILDING INTERNATIONAL TRUCKS

At Australia's only Exclusive Truck Manufacturing Works!

Growing with Australia

Harvester has grown a lot since those pioneering days — and its products have also assisted Australia to grow. Today Dandenong Works produces nearly 60 different types of motor trucks. It has the capacity to produce 10,000 truck units a year, each precision-made and specially designed for long life under rugged Australian conditions.

Economic Significance

I.H. Dandenong Works manufactures only motor trucks. Because of the special engineering requirements and the great diversity of models produced, truck manufacture is one of the most difficult jobs in the automotive industry. This Works is the only exclusive motor truck manufacturing plant in the Commonwealth. It is an industry of national importance, contributing essential equipment to an expanding economy. The plant output could be increased at short notice and its resources quickly mobilized to many other forms of automotive production if the need arose.

Engineering Research

Engineering research is playing a big part in the manufacture of International Harvester products. An example of this is "Trial by Torture", one of the most rugged "truck testing programmes" ever devised. Motor trucks are loaded to capacity and driven hard and for long periods under extreme operating conditions — far tougher than they will encounter in normal service. All parts and components are subjected to rigorous tests. Engineering data obtained from these tests is applied to solving truck engineering problems — and to improve the built-in quality of the product.

Trucks for Export

Thousands of Australian-made International trucks have been manufactured for use in transportation, agriculture, industry and the Armed Forces. But in recent years many more truck units have been going overseas. International Harvester has built up a modest yet steady export trade to over 30 countries and many islands of the Pacific. I.H. can be expected to find many more overseas markets, all export earners for Australia and — as already proved — all prestige builders for Australian-made products.

Our Suppliers

You will understand from the number and volume of the different types and models of motor trucks produced that it would not be economical to manufacture all of the parts for International Harvester products in our own Works. We therefore rely on the facilities of over 1,000 outside suppliers in all states of the Commonwealth to manufacture many of our requirements. Although our manufacturing operations are centred in Victoria our activities are giving employment to thousands of people in all states of Australia and helping these other states to grow.

Citizen of Dandenong

When you have seen all the activity at Dandenong Motor Truck Works — all the machines and the men and the finished products — you will agree that International Harvester is an important part of our greatest secondary industry — and a sizable part. The company has been favoured with excellent labour relations and a fine safety record. It has endeavoured to provide modern amenities and good working conditions for its employees and to play its part as a worthy citizen in the community of Dandenong. I.H. depends for its work force upon the steady flow of applications from the people of Dandenong and surrounding districts who feel they would be happy working for a company building essential equipment for essential work.

The end of the production line and the beginning of service life for these I.H. motor trucks. Thousands of component parts, hundreds of man-hours and years of research have gone into their manufacture.



Through complicated jigs and fixtures, sheet metal becomes cabs and utility bodies for the full range of International motor trucks.



Complete cab assembly is lifted onto chassis, engine and transmission assembly during final stage of production.



Essential products that serve



**AUSTRALIA'S
TRANSPORTATION**



INTERNATIONAL HARVESTER
Builder of Essential Equipment
For Essential Work

PRINTED IN AUSTRALIA

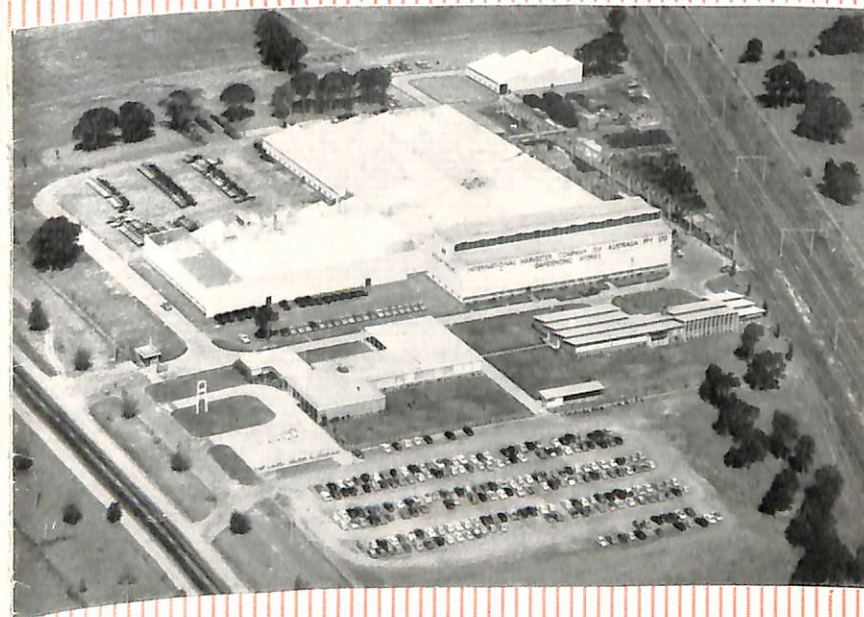


**INTERNATIONAL HARVESTER COMPANY
OF AUSTRALIA PTY. LTD.**

SAYS



**TO OUR
DANDENONG WORKS**



We're glad you came

How many visitors do you have to your home every year? Ten, a hundred, a thousand? The Harvester family at Dandenong played host to more than 15,000 last year and expects to see many more in the next twelve months. What's the reason for the big guest list? Possibly it's because we keep open house here almost every working day and we like to have people call in and see what we do at Dandenong Works. Another reason is best expressed by our visitors who tell us "an important part of modern education is to know how money, materials, men and machines combine to produce the things which make for a more progressive life." So here's a welcome to you. We trust that your visit with us will be rewarding and enjoyable.

our background.

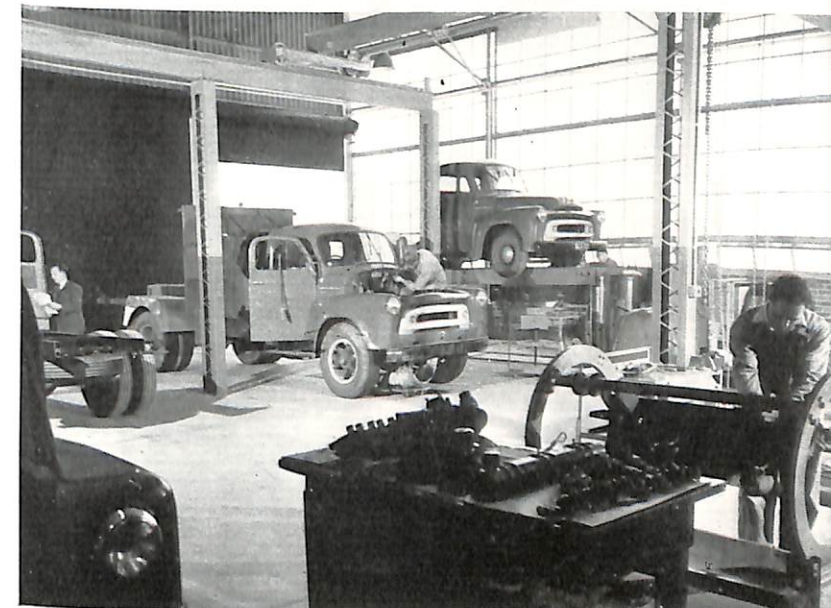
Knowing a little of this company's history may help you get a better picture of International Harvester's activities. This motor truck works was built in 1952. It stands on a 57 acre site and was one of the first big manufacturing industries to be established in the area.

Before Dandenong Works was built the company manufactured motor trucks at temporary premises in South Melbourne. Then, as now, some of the heavy engineering work was carried out in International Harvester's Geelong Works. The automotive section of Geelong Works was built in 1948. It consists of a modern grey iron foundry, still one of the best equipped in the Southern Hemisphere, a forge shop — and a well set-up machine shop. At Geelong the engine blocks, cylinder heads and manifolds are poured from molten metal and machined. These together with a number of other major castings are then forwarded to Dandenong Works for final machining and inclusion in the Australian-made International motor trucks. Geelong Works is already well known as the home of McCormick International and International tractors and a wide range of agricultural machines and construction equipment.

In fact, the name International Harvester has been a part of the Australian scene since 1902. Before that, and as far back as the 1850s, McCormick and Deering — the predecessor companies — were established as distributors of agricultural machines in Australia.



Hard driving and heavy loading test truck stamina in the "Trial by Torture" — an important part of the I.H. engineering research programme.



Within special workshops of Dandenong's engineering department, I.H. truck test fleet undergoes rigid inspection. Information gathered will form basic data for engineering research programme.



How hot is the molten metal pouring into this engine block mould? Technicians at I.H. Geelong Foundry can "tell by looking" with the visual pyrometer.