

Our New Plant . . .

The completion of the Cranbourne plant will end an era for Sperry New Holland and begin a new one. During the past 26 years at Dandenong we have become the major force in the Australian agricultural machinery industry.

The new Cranbourne manufacturing centre of 17,000 square metres, all under a single roof, will be a totally integrated unit with the latest computer numerical control lathes, computerization of the press shop, and the most modern paint system in Australia.

The 4,200 square metre shipping building will have a rail siding passing straight through it to enable all-weather loading and ensure speedier deliveries to our farmer customers.

Only half of the 46 hectare site at Cranbourne will be developed in the initial stage, allowing for room for further expansion in the future.

As well as manufacturing, we'll also be developing new farm machines at Cranbourne. Machines that will help not only Australian farmers, but farmers the world over grow more food. Our Engineering design group works as an integral part of a worldwide group. Some Australian developments have been incorporated in machines built in America and Europe. And of course, Australia benefits from the many new ideas developed by Sperry New Holland Engineers overseas.

Proudly we can boast that our new Cranbourne facility will manufacture a range of farm machinery unequalled in diversity by any of our other manufacturing plants in the world.



Our People . . .

At Sperry New Holland, our people don't just work for the Company, they are the Company, and we wouldn't have it any other way. Good employees produce both quality and quantity in our products, and they are encouraged to become better at their jobs to qualify for increasing responsibility. And to ensure that our people progress on the job, we provide a variety of training and development programs designed to increase skills and teach new ones.

Our Australian workforce totals 460, of which 390 will be located at Cranbourne. In addition to our Cranbourne Head Office and manufacturing centre, we have two branch locations, one at Brisbane and the other at Perth, and a field sales and service group with personnel located in rural townships throughout Australia.

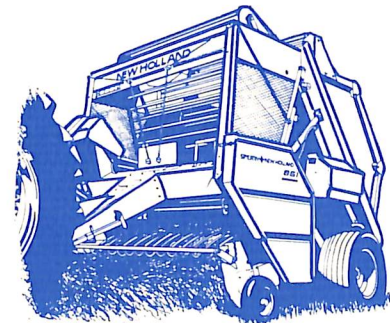
Back in 1895, when Sperry New Holland was founded, you could have asked the first employees about their work, and its likely they would have told you they were making farm equipment. And so they were - and so Sperry New Holland people still are.

Today however, we have come to recognise the business we're really in is the business of helping produce food and fibre for the people of the world.

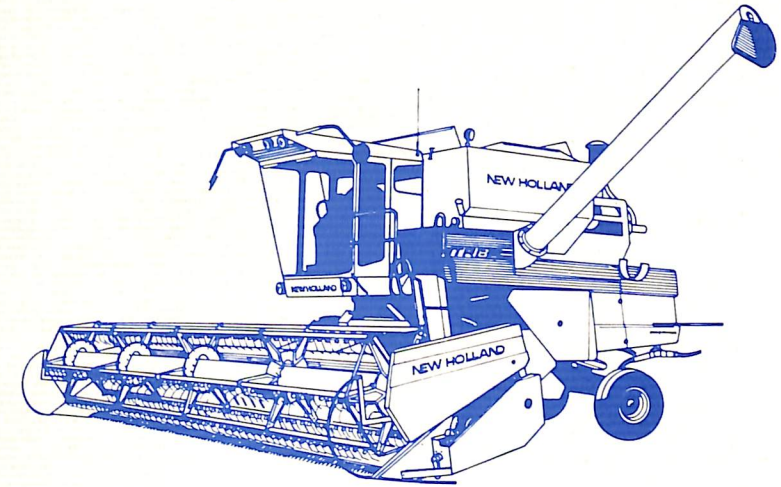
We make machines that enable farmers to do the job better. A statement that can be summed up with the following slogan: "Making machines do more so man can do more".

Our move to Cranbourne is a milestone in the history of Sperry New Holland and we look forward to a long and mutually beneficial association with our new neighbours at Cranbourne.

SPERRY  NEW HOLLAND



SPERRY  NEW HOLLAND



A LITTLE BIT ABOUT OURSELVES

In September, 1982, we'll be moving into our new home on the Berwick/Clyde Road.

Whilst as a company we may not have a "body" we do have a "conscience".

A conscience that is found in the way we recognise and accept our obligations of community citizenship.

Sperry New Holland people are encouraged to serve and support worthwhile community causes and the Company's practice is to set an example.

It is our aim to be known as good citizens here in Cranbourne and we are constantly aware that there is more to being a good neighbour than just creating job opportunities.

This leaflet may help you to get to know us a little better . . . who we are, what we do, and how we go about it.

About our Beginnings . . .

New Holland was once the name of our country. But that is not where the Company New Holland derives its name. The New Holland Farm Machinery Company traces its history back to the early days of American settlement.

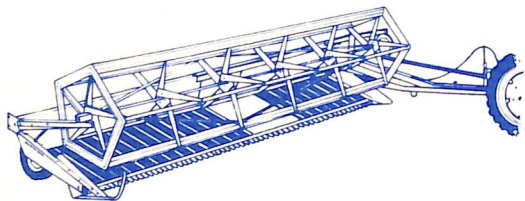
In 1895, a small farm equipment repair shop opened for business in the farming community of New Holland, Pennsylvania, USA. A sign on the front of the small building said "For The Repair of Anything Mechanical", and for 15 years this was the business of the New Holland Machine Works.

In 1900, the first big innovation came when New Holland produced a special kind of petrol engine with a tapered water jacket which prevented damage to the engine when the water froze.

Simple? Yes, but no one had thought of it before and thousands of New Holland engines were soon helping North American farmers get the job done, in foul weather and fair.

This was our real "first" and we began a steady climb to success. Besides petrol engines our early craftsmen turned out feed grinders, wood saws, iron troughs, and stone crushers as farmers began to win an ancient battle with muddy roads in rural areas.

By 1939, the New Holland workforce was down to 45 people and prospects seemed dismal. The Company was in need of a new product and about this same time the world's first automatic pick-up hay baler was invented by a local Pennsylvanian farmer. In late 1940, New Holland put this invention into production. It was a tremendous success and soon the New Holland baler was helping to ease the farm labour shortage during World War II and revolutionised the ancient farming practice of haymaking the world over. In 1946, New Holland balers were brought across the Pacific Ocean to Australia. Just one year later, the American based Sperry Corporation purchased the New Holland Machine Company. Then in 1955, the Corporation saw fit to establish a New Holland Division plant at Dandenong.

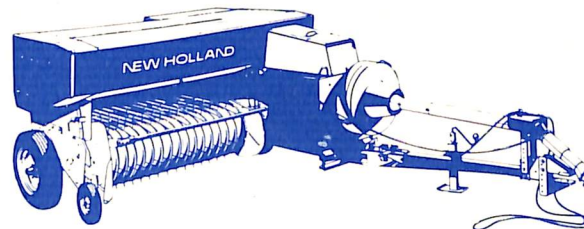


Our Worldwide Family . . .

Today our Company bears the name Sperry New Holland but our products still carry the familiar New Holland name.

Sperry New Holland employs over 13,000 people at nine manufacturing centres throughout the world and we sell our products in more than 80 countries on six continents. We are one of five operating divisions of the Sperry Corporation which employs over 92,000 people worldwide. The other Divisions are:

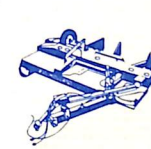
- Sperry Univac.
Computer systems and related equipment.
- Sperry.
Guidance control systems for land, sea and airborne uses.
- Sperry Vickers.
Fluid power equipment (hydraulic and pneumatic).
- Sperry Flight Systems.
Navigation, guidance and control equipment and flight instruments.



Our Products . . .

Exclusive of tractor producing farm equipment companies, Sperry New Holland is the Western World's largest manufacturer of farm machinery. We are a leader in equipment to harvest the three basic livestock feeds – hay, silage and grain. Our product line includes rectangular and round balers, forage harvesters, windrowers, automatic bale wagons, mower-conditioners, disc mowers, rotary hay mowers, side delivery rakes, tedder rakes, bale loaders, manure spreaders, grinder-mixers, crop carriers and self-propelled combine harvesters. Many of these machines will be manufactured at the Cranbourne plant, others will be imported from our overseas manufacturing centres and assembled at Cranbourne.

A network of 170 carefully selected Sperry New Holland dealers strategically placed throughout Australia provides farmers with this complete range of New Holland equipment and service.



96 Rotary Mower



90 Bale Handler



556 Rolarbar Rake



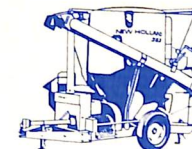
471 Bale Loader



57 Rolarbar Rake



317 Square Baler



353 Grinder-Mixer



253 Tedder Rake



851 Round Baler

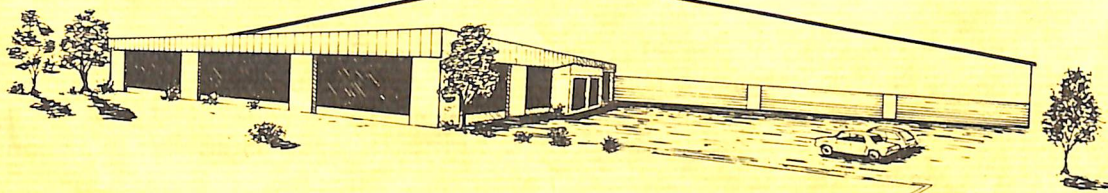


495 Haybine Mower-Conditioner



1038 Automatic Bale Wagon

CRANBOURNE STATUS REPORT



This report is to bring you up to date with construction progress at Cranbourne and to inform you about some new developments plus preliminary details about the transfer from Dandenong.

Firstly, we can report that construction is still running to schedule for an August completion of both the factory and office. Most of the work now being done at the site concerns the interiors of these two buildings and in the factory the power, lighting and fire protection installations are all well advanced.

We have taken delivery of part of the new painting and finishing equipment and the supplier of this major new system will commence installation work on May 3. The system will feature a small parts line and a main product painting line.

The small parts line operates from an overhead conveyor and includes an automated washing and phosphating unit to ensure we provide a good surface for paint adhesion. Four spray booths and a curing oven complete this line.

The main product painting line is in two sections. The first section, for pre paint preparation, will include a washing and phosphating booth plus a dry-off oven. The second section includes two spray booths and a curing oven. Both sections of the main line will be operated by a floor conveyor.

With this new equipment we will have one of the most modern paint shops in Australia which will enable us to improve on our already high standards of product finish.

We have completed our analysis of the temperature controls required within the factory building and in addition to the gas fired heating units we will be installing roof mounted evaporative coolers to control summer temperatures.

We are pleased to report that funds have been approved to construct the second stage of the project which concerns a third building to house the Service Parts Warehouse, Service Training Centre and Shipping Operations plus the rail siding which will pass through the building. Our objective is to complete this second stage by the end of February 1983 thus enabling a complete transfer of all personnel from Dandenong by March 1983.

Progress is being made on the Canteen and the order has been placed for the installation of a comprehensive kitchen which will offer you a choice of hot and cold meals at nominal prices. This service will be subsidized by the Company and will cater for afternoon shift employees also through use of hot and cold vending machines. For those warm summer days we are planning an outdoor eating area as an extension to the Canteen.

So that we retain some early history and keep a link with our days at Dandenong, we will be taking the mural from the foyer and installing it in the Canteen at Cranbourne. Some of you may not know that this mural was painted for us by Sir William Dargie, a renowned Australian artist, in 1955 when the Dandenong plant was first opened.

The soccer field has now been sown with grass and should be ready for the 1983 season. Bill Anderson is busy with the formation of a team to compete in the Peninsula League next year. If you are interested in joining, then talk to Bill or ring him on extension 150.

So that you will be properly informed about all aspects of the transfer to Cranbourne, we will be holding meetings during the week of May 10 at which Jack Scott will discuss full details of the transfer arrangements. We expect the transfer for office and factory personnel to take place progressively from August 9 through to October 15 and Service Parts Warehouse personnel will transfer in March 1983.

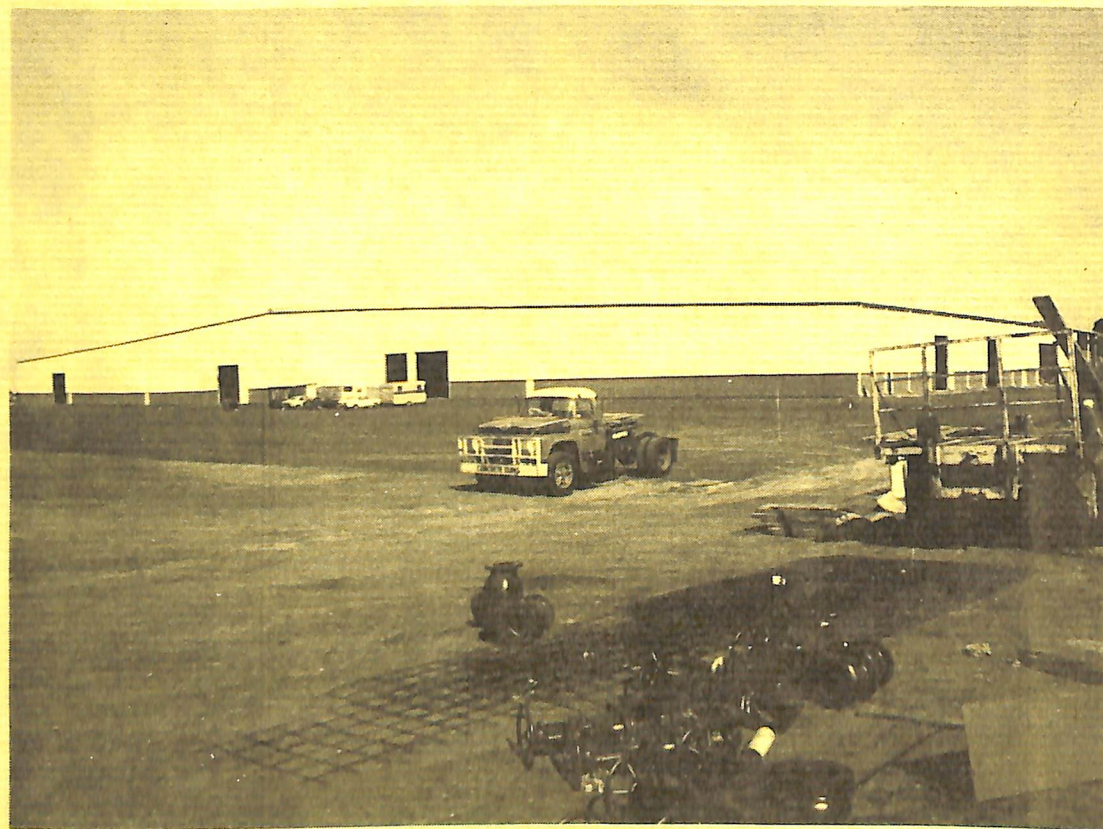
we will retain a portion of the Word Processing group at Dandenong until the office is completely operational at Cranbourne.

The main body of office personnel, that is, Marketing, including Parts office staff, Treasury, Purchasing, Engineering and the remainder of Personnel and Manufacturing, will transfer in the week of October 11.

The final group to transfer to Cranbourne will be the Service Parts Store personnel, who will occupy the new warehouse early in March 1983.

Obviously the final dates for transfer will depend upon the exact completion dates for the buildings. The above timetable will give you an outline of the plan, and we will keep you well informed of all aspects of our transfer to Cranbourne over the months ahead.

We will advise you of any changes in the timetable outlined above.



CRANBOURNE: OUR NEW HOME



INTRODUCTION

This brochure will tell you briefly about the planning behind our move to Cranbourne, and the benefits that you, and the Company, will derive from a new location. Also included are some details about the timing of the transfer to Cranbourne for each department.

You may be wondering exactly where you will be situated at the new facility, so the diagram enclosed will give you an idea of the layout.

Over the next few weeks you will be invited to visit Cranbourne so that you can see first hand the progress being made, and get to know more about your new place of work.

WHY ARE WE RELOCATING?

The planning for our move began in early 1978, when it became evident that after 23 years of operation we had outgrown the Dandenong facility.

Relocation to a new site not only enables us to improve our business performance in many ways, and the working conditions for all employees, but it provides us with the foundation and space to expand and develop our business. It is an investment in the future for all of us.

The new facility will not only provide us with the means to improve working methods in manufacture and distribution, but also to maintain the high quality standards of our products. All departments will see significant improvements, whether they be involved in product development, production, customer service, or the many support roles involved throughout the Company.

Our move to Cranbourne consolidates our position as a market leader and pacesetter in both the production and marketing of agricultural products. And in so doing provides all of us with the benefits and security that come with a healthy business.

HOW WILL YOU BENEFIT BY OUR MOVE?

As an employee, Cranbourne offers you many new benefits:

- ★ The factory working environment will be equal to the best in Australia. The ventilation, gas heating and evaporative cooling systems will ensure a clean and comfortable atmosphere throughout the year. High-efficiency sodium lighting will provide an even level of illumination, and the orderly layout of the plant will provide adequate space, an even work flow, and safer working conditions.



- ★ Materials handling equipment is being installed to reduce manual effort and improve safety. Overhead cranes service the Press/Machine Shop, Engineering Workshop and Shipping Building. Products will be moved through the paint system by conveyor and monorails, and gantries will be built into the Assembly Shop layout.
- ★ The office too will provide a comfortable working environment with zoned ventilation, heating and cooling systems to balance temperatures throughout the building. Furnishing of the open

plan design will provide an attractive interior and an efficient flow of work between departments. Noise level will be controlled by use of special acoustic materials and double-glazed windows.

- ★ Our communications will be greatly enhanced by a sophisticated telephone system which is the most advanced type available. The system includes many convenient features for the user.
- ★ The Canteen service will provide hot or cold meals for both day and afternoon shifts. The Company will subsidise this service so that the costs will be attractive to you. And when the weather's right, an extension of the Canteen will provide a pleasant outdoor eating area.
- ★ A comprehensive Medical Centre in the factory will be staffed by a full-time Sister and will be equipped to handle all first aid situations, plus industrial health programs such as hearing tests. An examination room will also be provided for use by a visiting industrial doctor.
- ★ Paved off-street parking for cars and motorcycles will be provided for all employees.
- ★ Training and conference facilities will be provided within the office and factory buildings.
- ★ The new Shipping Building, to be completed by March 1983, will provide all-weather protection for employees involved in receipt or shipment of machines, parts deliveries and service parts despatches, by road or rail.
- ★ Comprehensive fire protection and security monitoring systems will

provide you with a safe working environment.

- ★ Facilities for social activities and sporting events will be progressively developed. The Canteen will be available for after hours activities by the Social Club, or other approved groups. The soccer ground, already developing a well grassed surface, will be ready for the 1983 season.

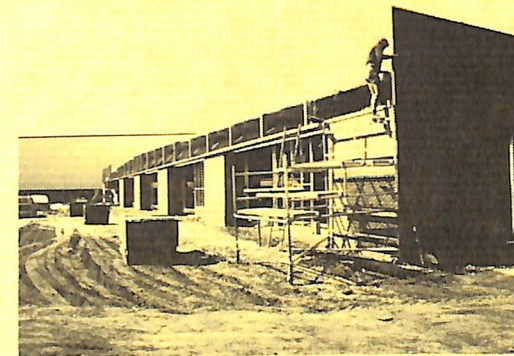


- ★ The grounds will be developed to provide an attractive landscape with areas suitable for social use.

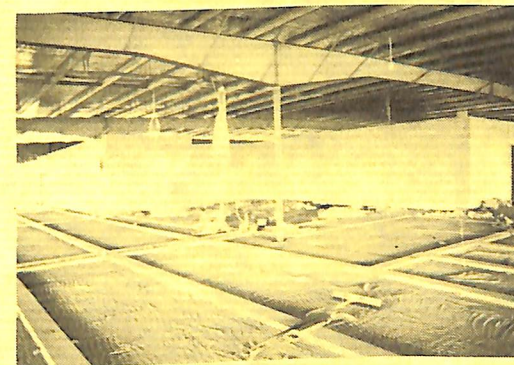
WHAT IS THE TIMING FOR OUR TRANSFER?

The timing for the move is planned to occur progressively over a period of about nine weeks between September 6 and November 5. You will all be involved in some way.

During the period of the transfer we will continue to assemble machines here at Dandenong whilst we progressively set up the factory at Cranbourne. The final products to be produced here at Dandenong will be this season's combine harvesters, and the first products to be built at Cranbourne will be 851 round balers.



The first group to transfer will be Maintenance Department, who will be very much involved with the installation of equipment in the factory. The Production Store will be set up over the first five weeks of the transfer period. The Press/Machine Shop and Toolroom will transfer progressively between September 27 and October 29. The Assembly and Weld Shops will be set up progressively from about October 4.



Office staff connected with Manufacturing and Personnel, will progressively transfer to Cranbourne from September 6 to support the set up of activities in the factory.

The Printing Department will be established in the office building during the week of September 27. They will be followed in the next week by the Word Processing Centre and Computer Sections. To maintain communications

RAIL SIDING

SHIPPING AND SERVICE PARTS

35

36

37

CARPARK

PICKLING SHED

ENTRANCE

- 1. ENGINEERING
- 2. MANUFACTURING
- 3. M.I.S.
- 4. COMPUTER & WORD PROCESSING
- 5. TREASURY
- 6. MARKETING
- 7. ART DEPARTMENT
- 8. L.A.F.E.
- 9. PURCHASING
- 10. CORPORATE OFFICE
- 11. PERSONNEL
- 12. MANAGING DIRECTOR
- 13. PRINTING DEPARTMENT
- 14. CANTEEN
- 15. TOILETS
- 16. MAIN PAINT LINE
- 17. COMBINE ASSEMBLY
- 18. HEADER ASSEMBLY
- 19. BALER, MIXER ASSEMBLY
- 20. TOILETS & LOCKERS
- 21. FIRST AID
- 22. FACTORY OFFICE
- 23. RECEIVING
- 24. PRODUCTION STORE
- 25. WELDING & SUB ASSEMBLY
- 26. SMALL PARTS PAINT LINE
- 27. STEEL STORE
- 28. PRESS & MACHINE SHOP
- 29. INSPECTION
- 30. MAINTENANCE
- 31. TOOL ROOM
- 32. TOILETS
- 33. ENGINEERING WORKSHOP
- 34. PLANT ROOM
- 35. SHIPPING
- 36. SERVICE PARTS
- 37. SERVICE TRAINING

OUTSIDE STORAGE

CARPARK

16

20

17

18

19

21

22

14

12

9

10

8

6

5

7

4

3

2

1

ADMINISTRATION

23

24

25

26

13

11

15

13

29

27

28

30

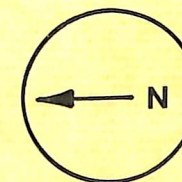
31

32

33

34

MANUFACTURING



CRANBOURNE