

**NORDEN**



*Celebrating 50 years of service  
to the transport industry*

**2nd October 2010**

**at the Chifley Hotel Complex  
Cnr Doveton Ave & Princes Hwy Doveton Vic.**



# NORDEN CONVERSIONS

## VEHICLE MODIFICATION SPECIALISTS



Heavy Duty Tray Body. Note that the chassis extends past the rear of the body and is reinforced at the rear, ready for fitting a Heavy Duty Hydraulic Crane.

## AGENDA

•• Mr. Max Walker - MC for the evening

•• Call to Order

•• Start 7.00pm to 7.30pm - Guests to arrive, offered Sherry or Wine and Nibbles on arrival

•• Address by Ron Anson

•• Fellowship and getting to know fellow guests; refreshments served

•• Presentations

•• Introduction of the City of Dandenong Mayor, Councillor Mr. Jim Memeti

•• Response to the Mayor of Dandenong by Robert Anson

•• Address by Wendy Anson - Moseley

•• Entertainment

## **Brief History of Norden Body Works**

Norden Body Works was founded by Ron Anson and Dennis Lantsbury in late 1959 and 1960, with the idea of building commercial transport truck bodies. They initially leased a small factory in Pearce Street, Springvale.

Both Ron and Dennis were working for a company called Vowbra, which at that time was a motor body building company. Ron was employed as Foreman in Charge of the Van Building Division, and when he gave his notice of resignation as he was to go into business for himself, the Managing Director asked Ron to provide a quotation to complete the Furniture Removals Van Body that was currently under construction. The quotation was successful, thus forcing the partners to find new premises. A factory in Tharle Street, Dandenong was the chosen site.

Business was booming in 1960; however the Government of the day was concerned that the availability of credit was out of control, and in early 1961 launched a credit squeeze. This resulted in Dennis being unable to obtain his seed capital of £200 pounds. Ron's father, Walter James Anson, therefore purchased Dennis' share of the business. Ron and Walter formed a partnership that operated up until Walter's passing in 1979, after which Ron became the sole proprietor of the business.

During the 1970's Ron registered the name Jesent Pty Ltd which became the holding company. In the late 1960's Ron and Walter purchased land in Bennet Street, Dandenong, the long range plan being to build a factory of their own. After the land was paid for, they approached the bank for a loan to build. The bank begrudgingly loaned them the \$20,000-00 they needed. The new

building was erected in 1967 and has since then had three major extensions, the first being two extra bays added to the rear of the factory. This was followed by an extension on the south side of the factory which housed the main office, drafting office, toilets and lunch room. The third and by far the largest extension is the new double storey office building on the north-side of the property which includes a passenger lift and the concreting of the front fore court.

The company now proudly operates four divisions. Norden Hydraulic Connections was registered to trade on the 18th of November, 1985 and both wholesales and retails hydraulic hoses and fittings Australia wide. Norden Conversions provides the fitting out of vehicles for the disabled community, which includes the fitting of Wheelchair Lifts, Wheelchair Restraint Systems and the provision of Seat Modifications. Kwikiee is another company registered under the Norden name and imports equipment which is used extensively by the caravan and mobile home industry. Some of the products provided include electric steps, levelling equipment, room slides and a host of other equipment which is being sold both Australia wide and also into the New Zealand market.

Norden also operates a number of Hire Vehicles which are fitted with wheelchair lifts and restraint systems. These vehicles are predominantly hired out to the disabled community. Also in operation are a fleet of Service Vans that are used throughout Victoria and Southern N.S.W. for the preventative maintenance and servicing of wheelchair lifts and associated equipment.



*Ron and Pam Anson, unfortunately Pam passed away 21st January 2005*



*Elizabeth and Walter Anson (dec.)*



Above: General Manager, Robert Anson.

Right: Financial Controller and Office Manager, Wendy Anson.



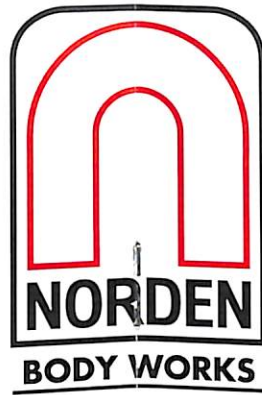
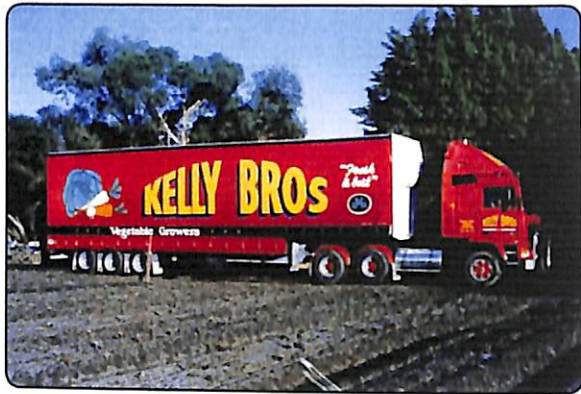
Below: Jenny Anson lives in NSW and is a qualified Social Worker.



Presentation to Lawrence McCoy on Friday the 30th July 2010 to honour Lawrence's 35 years of service to Norden.



Norden is very proud of the loyalty and dedication that Lawrence has given over the past 35 years. Macca, as he is better known, started with Norden as an apprentice motor body builder at the age of 16. Macca has a very talented ability to visualise what the client wants.



*Cross Section of Bodies  
manufactured by Norden  
in past years*





## The Norden Cable Trailer



**Norden Management is very proud  
of all of their employees.**

*Listed below are those employees who have provided ten (10)  
or more years of service.*

- ❖ *L. McCoy 35 years, continuous*
- ❖ *G. Oudman 28 years, continuous*
- ❖ *D. Meakin 19 years, over three (3) periods*
- ❖ *T Panapa 19 years, over two (2) periods*
- ❖ *R. Belloro 18 years, continuous*
- ❖ *G. Allsop 25 years, over two (2) periods*
- ❖ *R. Anson 33 years, continuous*
- ❖ *W Anson 27 years, continuous*

*Each of the above employees remains employed by Norden.*

## Norden Hydraulic Connections Pty/Ltd

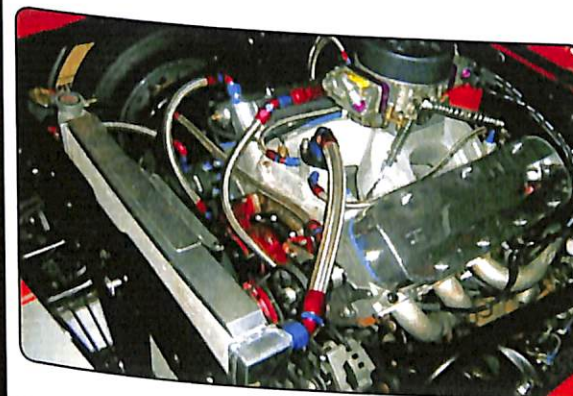
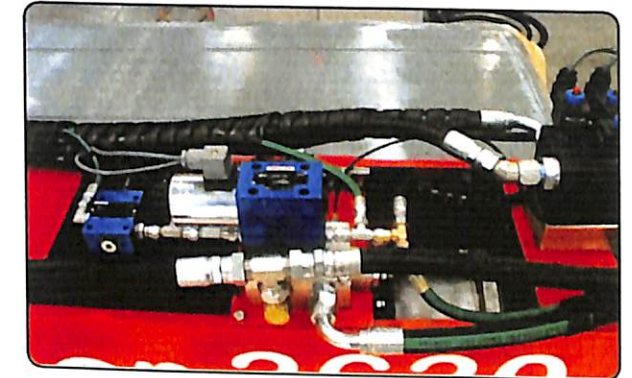
Norden Hydraulic Connections stock a huge range of hydraulic hose and fittings. We also manufacture hose assemblies for major transport manufacturers.

Norden Hydraulic Connections imports and distributes the Snap Tite range of high pressure quick release couplings. These fittings are available in stainless steel and brass and are sold Australia wide to the mining petroleum manufacturing industry and all groups requiring a good quality quick release coupling.



Hose Assemblies  
Manufactured and Fitted by  
N.H.C.

Hydraulic Hoses and Fittings  
Manufactured by N.H.C.



High Performance Braided  
Hoses and Anodized Fittings  
Supplied and Fitted by N.H.C.



# NORDEN CONVERSIONS

## NORDEN VANS AND SERVICE PERSONNEL



Toyota Coaster Bus fitted with New Side Door and Wheelchair Lift. New Door and Frame Fabricated, Painted and Fitted by Norden

VW Transporter fitted with Wheelchair Lift and Restraint System for Wheelchairs

Left: Service Personnel cover the whole of Victoria and north to Young in N.S.W.



Mercedes Sprinter fitted with Wheelchair Lift

Norden Demonstrator and Hire Vehicle

# NORDEN

