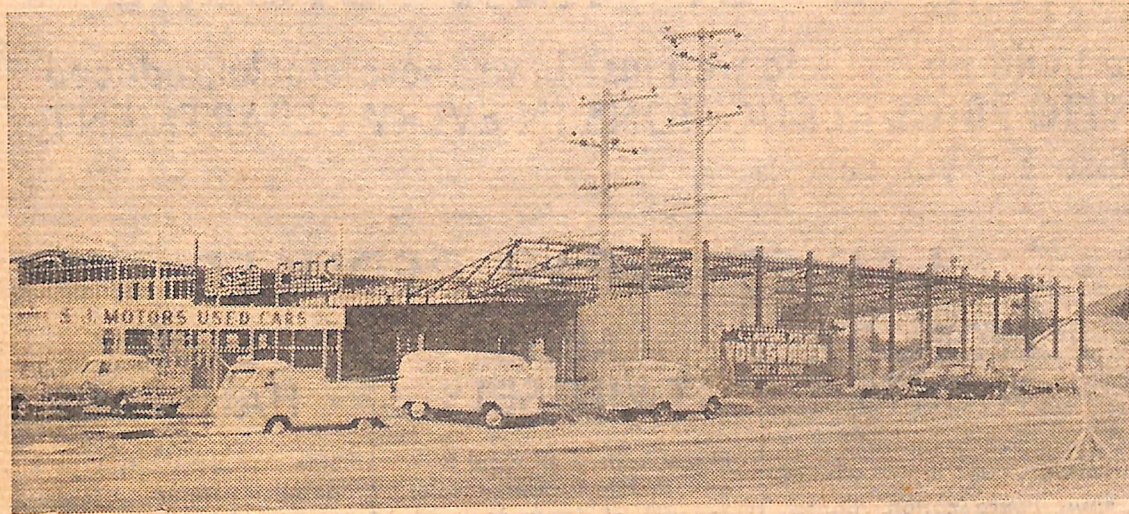


DANDENONG'S CHANGING EAST END



Modern buildings are following closely on the heels of Dandenong's new 6-lane highway between Frankston and Cranbourne Rd. turnoffs.

Street lighting, kerbing and lawns are in the final stages of construction and greatly enhance this new business area.

Shown above is S. J. Motors' modern showroom and service department designed by Volkswagen (Aust.) Pty. Ltd. and being built by Mr. W. B. Leed with almost 100 per cent. local labor and material.

—Beaver Photographic.