

**FLINDERS  
VAULTS**



## FLINDERS VAULTS

### EXISTING CONDITIONS

The FLINDERS VAULTS are situated under the railway viaduct adjacent to the Flinders Street Railway Station and the Yarra River. They comprise seventeen continuous barrel vaults running north-south and at present are run-down assorted warehouses and stores.

### PROPOSED SCHEME

The FLINDERS VAULTS are to become a centre of energy. Shops, restaraunts and kiosks will adjoin Flinders Street to the Yarra River.

All shops are to be open-ended so that people will be encouraged to walk through them.

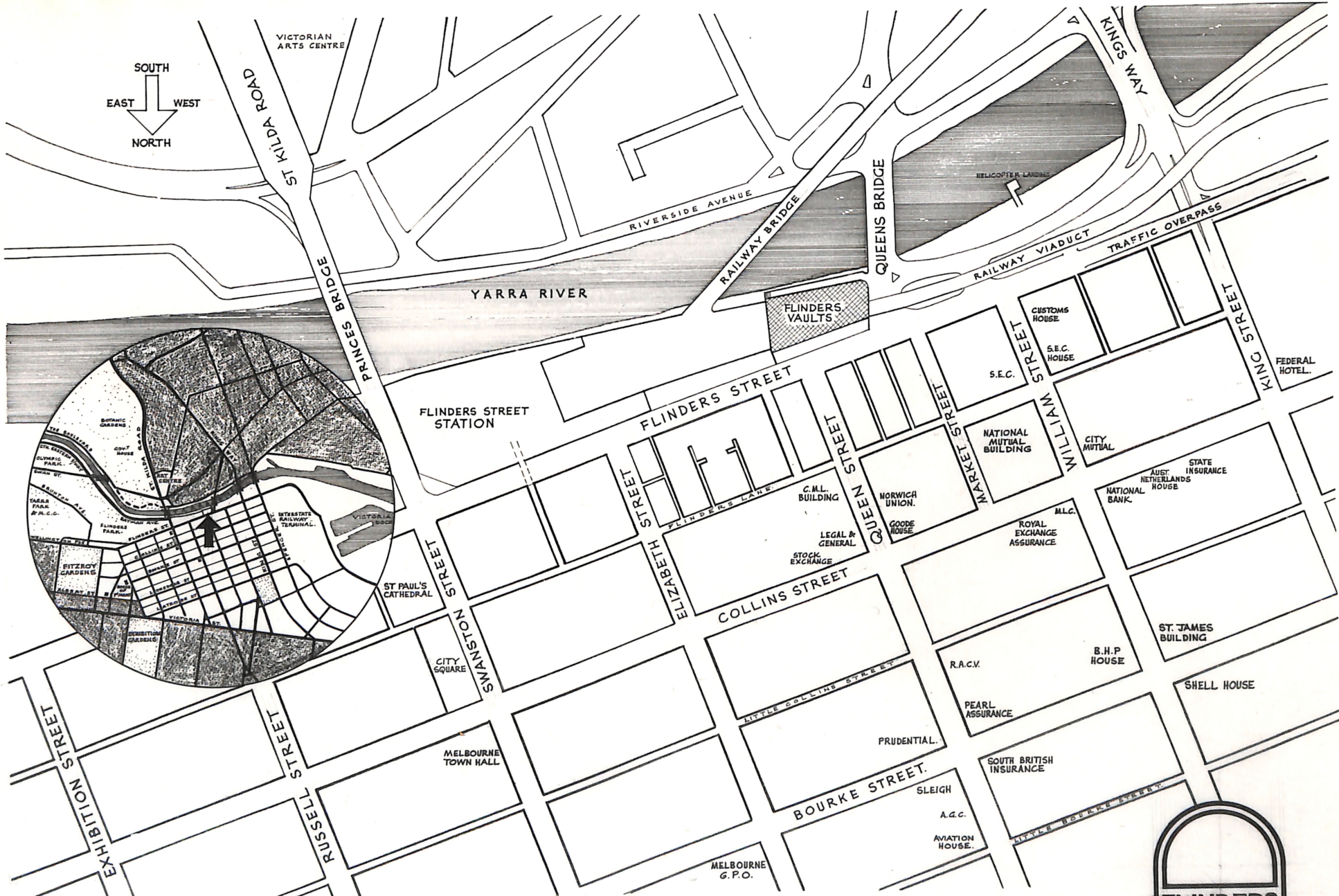
A large Vault will run through the centre of the complex to encourage further passing pedestrian traffic to use FLINDERS VAULTS as their normal route.

Approximately 150,000 people work in the Central Business District of Melbourne (bounded by LaTrobe, Spring, Flinders and Spencer Streets).

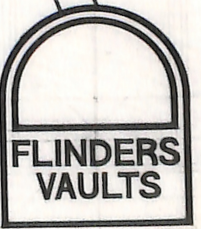
Of these, 24% work in the section immediately north of the FLINDERS VAULTS (bounded by Bourke, Elizabeth, Flinders and William Streets).

FLINDERS VAULTS will become their centre of entertainment especially as they commute across Queens Bridge and through the FLINDERS VAULTS to the Flinders Street Railway Station and at lunch hours for meals and shopping. It is anticipated the FLINDERS VAULTS will become a stopping point for tourist buses and a set-off point for a renewed Yarra River cruising enterprise. FLINDERS VAULTS will be as much a tourist attraction as a workable high quality commercial centre.





LOCATION PLAN AND LOCATION MAP INSERT





YARRA RIVER



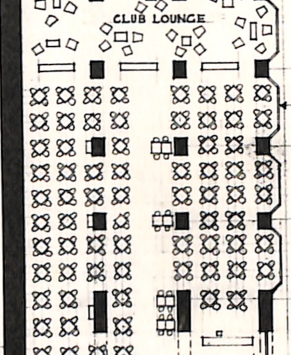
UP TO FLINDERS STREET STATION

ENTRANCE

PAVED WALKWAY

ENTRANCE

A



RESTAURANT 296 DINERS

KITCHEN

CAFETERIA 202 CUSTOMERS

SNACK BAR

CAFETERIA ENTRANCE

SHOP 26 1,862 SQ. FT.

SHOP 25 1,570 SQ. FT.

SHOP 24 1,547 SQ. FT.

SHOP 23 1,513 SQ. FT.

SHOP 22 1,487 SQ. FT.

SHOP 21 1,460 SQ. FT.

SHOP 20 1,438 SQ. FT.

SHOP 19 1,410 SQ. FT.

SHOP 18 1,385 SQ. FT.

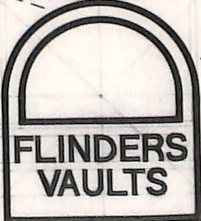
SHOP 17 1,360 SQ. FT.

SHOP 16 1,326 SQ. FT.

SHOP 15 1,598 SQ. FT.

RAILWAY BRIDGE OVER

RAILWAY BRIDGE OVER



FLINDERS VAULT

SHOP 1 863 SQ. FT.

SHOP 3 1,496 SQ. FT.

SHOP 4 1,496 SQ. FT.

SHOP 5 1,496 SQ. FT.

SHOP 6 1,496 SQ. FT.

SHOP 7 1,496 SQ. FT.

SHOP 8 863 SQ. FT.

SHOP 9 863 SQ. FT.

SHOP 10 863 SQ. FT.

SHOP 12 1,496 SQ. FT.

SHOP 13 1,490 SQ. FT.

SHOP 14 1,088 SQ. FT.

SHOP 9 863 SQ. FT.

SHOP 9 863 SQ. FT.

PAVED WALKWAY

EXISTING FOOTPATH

FLINDERS STREET

B

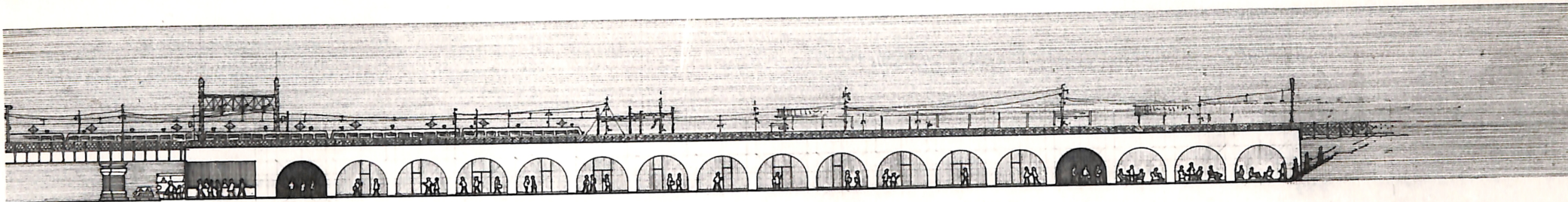
SCALE OF PLAN 16 FEET TO 1 INCH

ROMBERG & BOYD PTY. LTD, ARCHITECTS, 340 ALBERT STREET, EAST MELBOURNE, VIC. 3002

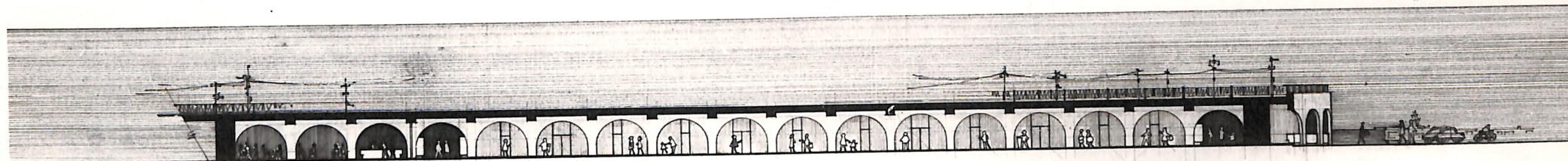
TELEPHONE: 41.5351. 41.5352.

JANUARY 1972

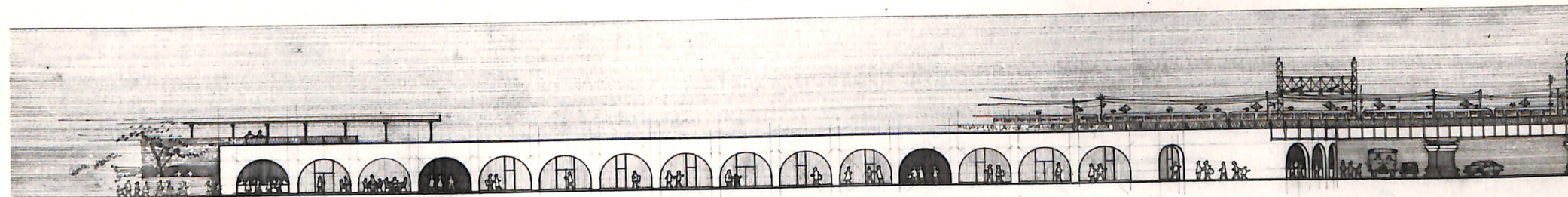




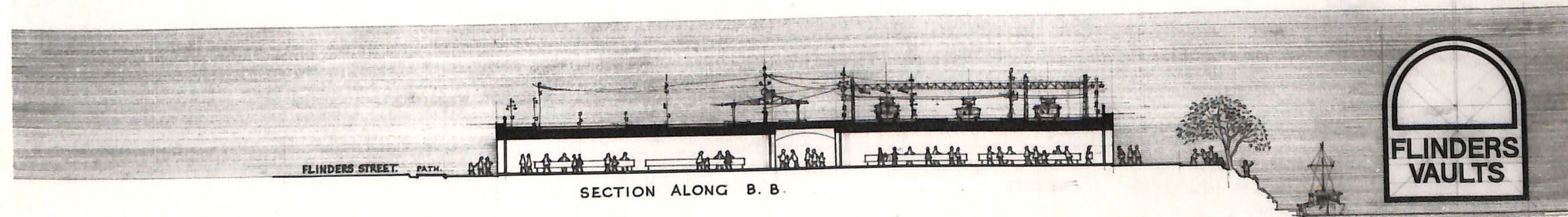
ELEVATION LOOKING FROM RIVER BANK WALKWAY



SECTION A.A THROUGH FLINDERS VAULT



ELEVATION LOOKING FROM FLINDERS STREET



SECTION ALONG B. B.



SCALE OF DRAWINGS  16 FEET TO 1 INCH

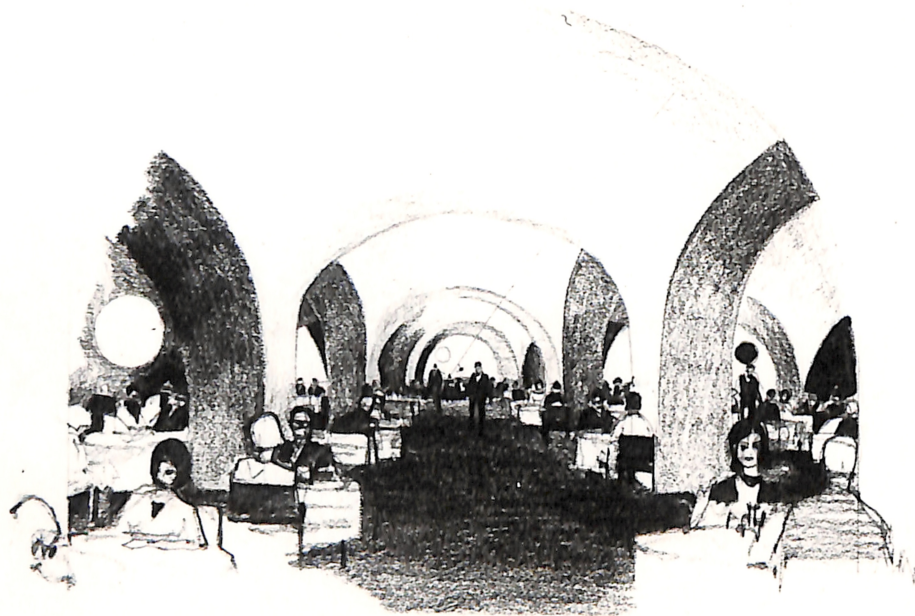
ROMBERG & BOYD PTY. LTD, ARCHITECTS, 340 ALBERT STREET, EAST MELBOURNE, VIC. 3002.

TELEPHONE: 41.5351 41.5352.

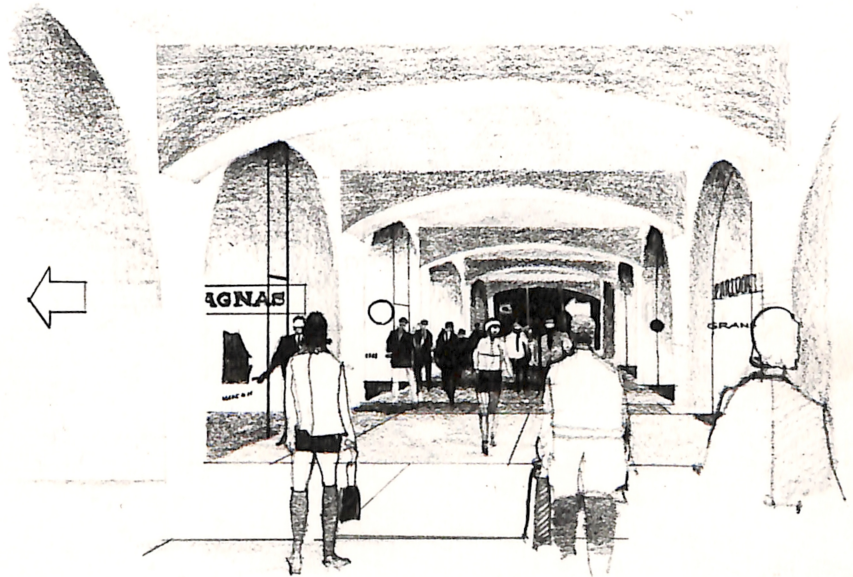
JANUARY, 1972

808

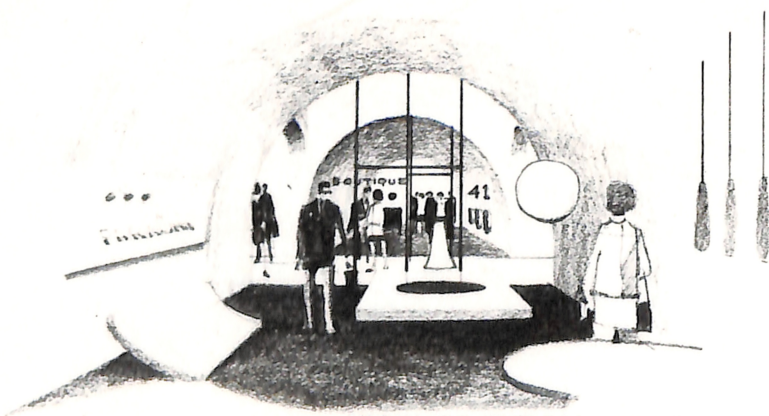




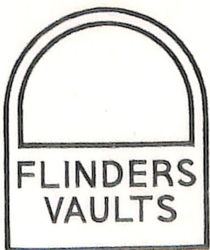
VIEW OF RESTAURANT



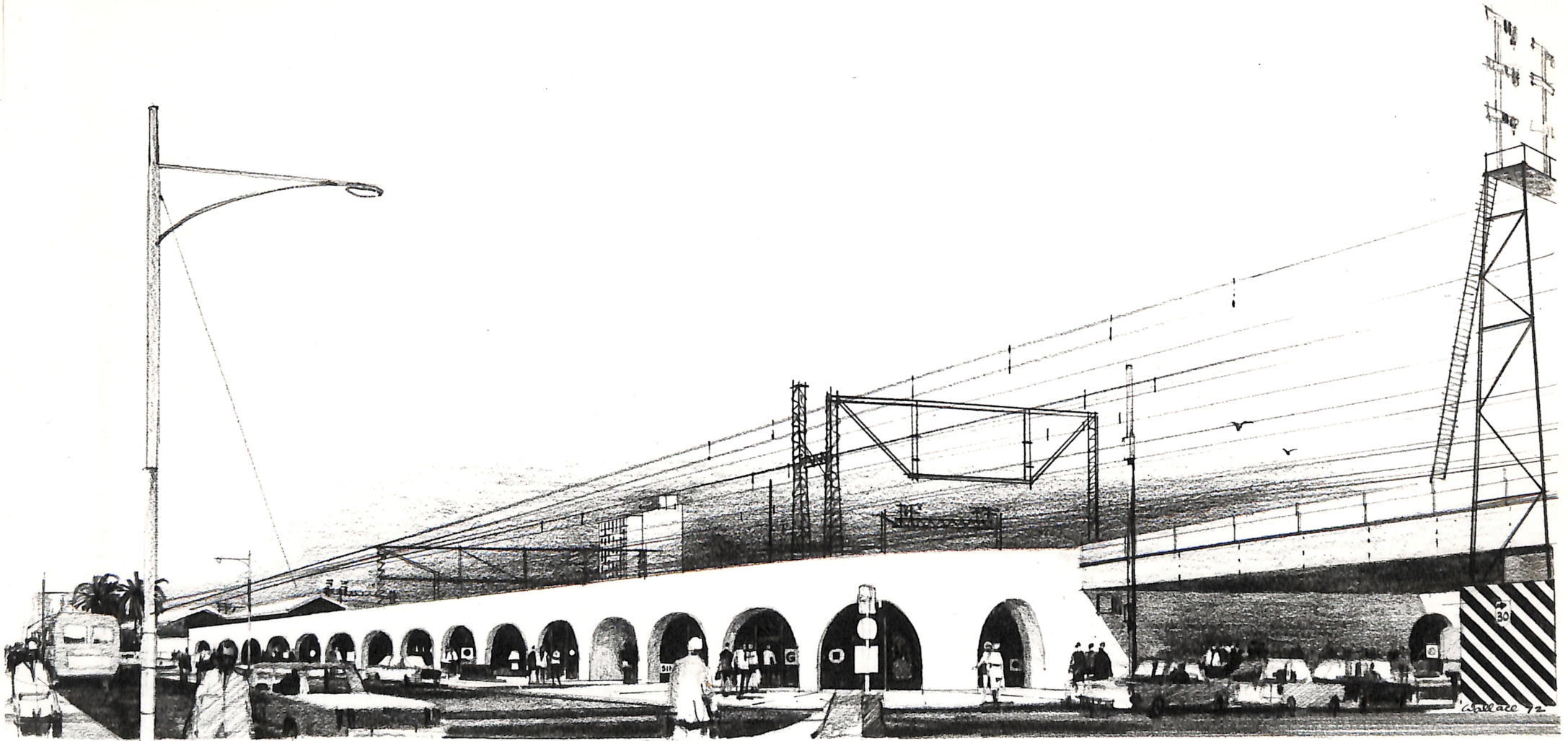
VIEW OF MAIN VAULT



VIEW OF TYPICAL SHOP







VIEW FROM FLINDERS STREET

