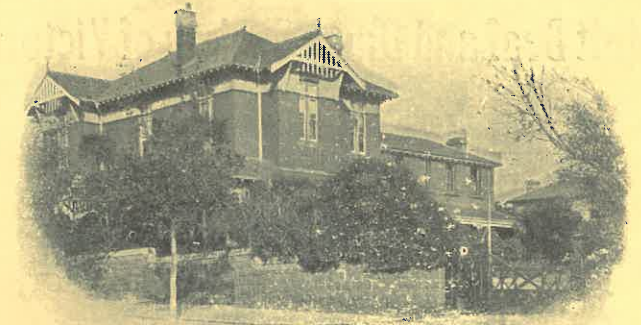


Manual Alphabet as used by the Deaf and Dumb



Wholly set up and printed in Australia by Peacock Bros. Pty. Ltd.,
486-490 Bourke St., Melbourne



ADULT DEAF MUTE CENTRE, JOLIMONT SQUARE, MELB. HEADQUARTERS OF THE SOCIETY.

48TH ANNUAL REPORT

FOR YEAR ENDING MARCH 31ST, 1932

OF THE

Adult Deaf & Dumb Society of Victoria (Incorporated)

HEADQUARTERS: ADULT DEAF MUTE CENTRE
JOLIMONT SQUARE, MELBOURNE EAST

AND THE

HOME FOR AGED, INFIRM AND BLIND DEAF MUTES
WITH TRAINING FARM FOR MENTALLY DEFECTIVE

AT BLACKBURN, VIC.

PHONES ADULT CENTRE: J 1270

THE HOME: WX 2216



THE HOME FOR AGED, INFIRM, MENTALLY DEFECTIVE, AND BLIND DEAF MUTES AT BLACKBURN

This Society is NOT CONNECTED with the Victorian Deaf and Dumb Institution, which is a RESIDENTIAL SCHOOL for Deaf and Dumb Children

Adult Deaf and Dumb Society of Victoria

(INCORPORATED).

ADMINISTRATIVE BUILDING
AND
CLUB HOUSE
JOLIMONT SQUARE, MELBOURNE EAST

Office open daily, 9 a.m. to 5 p.m.,
FOR ADVICE, ASSISTANCE, EMPLOYMENT

Every Evening (except Wednesday), 7 to 10.30 p.m.
Lectures, Classes, Library, Reading Room, Recreation,
Socials, Billiards, Badminton, Table Tennis, etc.

Meals for Unemployed.
Also Sugar, Tea, Milk, Hot Water provided daily, 12
o'clock to 1 p.m.

Clubs.
Cricket, Tennis, Lacrosse, Hockey, Men's Guild,
Women's Guild.

Bank

Publication.
"The Victorian Deaf News."

CHURCH,
JOLIMONT SQUARE, MELBOURNE EAST.

Divine Service in the Finger and Sign Language,
Sundays, 7 p.m.
Prayer, Lessons, Thursdays, 8 p.m.

HOME FOR DEPENDENT DEAF MUTES
BLACKBURN

Aged, Infirm, Blind and Mentally Defective Deaf and
Dumb.

BRANCHES

GEE LONG

Hon. Chaplain: REV. J. J. BOOTH.
Hon. Secretary: MRS. A. PIPER.

BALLARAT

Hon. Secretary: MR. MAURICE MARK

Adult Deaf and Dumb Society of Victoria

(Incorporated)

OFFICE-BEARERS, 1932-1933

Patrons:

HIS EXCELLENCY THE HON. SIR WILLIAM H. IRVINE,
K.C.M.G., L.L.D., LIEUT. GOVERNOR OF VICTORIA.
THE RIGHT HON. THE LORD MAYOR OF MELBOURNE,

President: MR. E. R. PEACOCK, J.P.

Vice-President: MR. EUGENE GORMAN, K.C.

Chairman: MR. N. ARMSTRONG, J.P.

Hon. Treasurer: MR. L. A. CLEVELAND, 20 Queen St., Melbourne.

Hon. Secretary: MR. R. J. OEHR, F.I.C.A., F.C.I.S.,
316 Collins St., Melbourne.

Hon. Physicians: DR. W. J. CRAIG and DR. A. J. FARGIE

Board of Management:

MR. N. ARMSTRONG, J.P.	COUNCILLOR E. L. MORTON
*MR. W. H. CRUSH	*MR. G. NEWNHAM
MR. G. FETHERS	MR. EDGAR H. PEACOCK
*MR. F. E. FREWIN	MR. F. W. SPRY
MR. M. J. HOATH	COUNCILLOR G. W. SWEETLAND
	MR. S. WATKIN

Principal:

MR. ERNEST J. D. ABRAHAM,
Adult Deaf Mute Centre, Jolimont Square, Melbourne.

Assistant Secretary: MISS E. EMPSON

Residential Welfare Officer: *MR. J. M. JOHNSTON

* These gentlemen are deaf.

Collectors—City and Suburbs: MESSRS. *E. JOHNSON,
*M. G. B. MORTIMER and *E. NOBLE

Collectors—Country: MESSRS. *N. WEBB and *O. QUINTON

GEE LONG BRANCH.

Hon. Chaplain: REV. J. J. BOOTH,

Hon. Secretary: MRS. A. PIPER.

Meeting Place: Rotary Club, Moorabool Street, Geelong,

BALLARAT BRANCH.

Hon. Secretary: *MR. MAURICE MARK.

Meeting Place: Golden Point F.C. Committee Rooms, Bridge St., Ballarat.

FORTY-EIGHTH
ANNUAL REPORT

OF THE

Adult Deaf and Dumb Society

OF VICTORIA (INCORPORATED)

The Board of Management has pleasure in presenting to the subscribers and friends the 48th Annual Report of the Adult Deaf and Dumb Society of Victoria. In doing so, the Board reverently acknowledges with deep thankfulness the Divine Guiding Power which has led the Society so advantageously through a year of exceptional depression, problems and anxieties.

Going over the details of the year's work, the Board is strengthened in its conviction that no other existing organisations could undertake the wide range and the special confidential services so peculiarly connected with the Society's aims, and so successfully achieved by its officers.

OUR OBJECTIVE.

The problems and difficulties of an Adult Deaf and Dumb Society may easily be explained by the statement that they embrace practically all the problems of the varied institutions and organisations established for the care and uplift of normal people generally—spiritual, educational, philanthropic and social. Our aim is to provide facilities, and care for the interests of the deaf and dumb from the day they leave school right through active life to old age. The absence of the sense of hearing prevents participation in the benefits provided in the numerous splendid public institutions which provide for the education, social advancement, and amusement of the people generally. For what are our great institutions, such as University Cathedral, Vocal and Instrumental Festivals, Theatre Public Dinners and Club Functions, Telephone and Wireless, to the deaf and dumb?

Though we immediately sense the terrible loss of sight to the blind, we do not so easily realise the still greater loss resulting from deafness, which means isolation. Is not the sense of hearing our principal means of social intercourse and everyday business life?

It is the aim of this Society to bring into existence as many agencies and substitutes for the public advantages lost to the deaf and dumb as funds will permit. To overcome, or rather bridge, this great handicap and equalise at least in some degree, the advantages which citizens generally enjoy nowadays, as a matter of course, over their deaf and dumb fellow citizens.

OUR INSTITUTIONS.

The successive Boards of Management of this Society, in their efforts to make up to the deaf and dumb all that they lose through the absent sense of hearing and also, remembering all that possession of the sense of sight means to them, selected for the gathering place of the young and the Home for the aged spots attractive to the eye. At Jolimont, three minutes by tram from the City, in an old world garden, stands their picturesque Club House, with its popular Assembly Hall, reading room, library, billiard room, and other facilities for instruction and recreation. There is a kitchen and conveniences for entertaining, and providing means for the unemployed and all in need, open daily from 9 a.m. to 10.30 p.m. Adjoining is the Administrative Building, with office open from 9 a.m. to 5 p.m., for advice and assistance, or help in obtaining employment. Here resides the Welfare Officer, who can be seen at any time, and in cases of emergency a 'phone message will bring the Principal. In the centre of the garden is their beautiful little Church, which was specially designed for worship in the language of Gesture. On the right of the entrance there is the tennis court. Beside indoor provision for the spiritual, moral and intellectual uplift, Hockey, Tennis, Cricket and Lacrosse Clubs are established, each having its own deaf Committee of Management.

At Blackburn, surrounded by acres of flowers, and hill and dale covered with native gums, is the imposing block of buildings providing home comforts for the deaf and dumb who are aged, infirm, mentally defective, blind, or in temporary need of shelter. All the officers of the Society, the Principal, Lady Officer, Matron, Welfare Officer and Overseer, have had years of experience in this particular work to which they are devoted.

THE CHURCH.

In the beautiful little Church for the Deaf and Dumb at Jolimont Square, all unite in a simple form of

worship. Ministers of various denominations from time to time conduct the services, which are interpreted to the deaf, and on occasions of marriages and christenings the minister of the party's own choice officiates, with the Principal of our Society assisting.

BENEVOLENT.

The office at headquarters is open daily for relief, advice, and assistance of every kind, and a telegram or 'phone message will bring one or other of the officers to any part of Victoria in cases of urgent necessity.

CONFIDENTIAL CASES.

One of the most helpful branches of the Society's work is that pertaining to the private, personal and domestic, difficulties and embarrassments of our charge. Every case is attended with the strictest confidence, and the Board can assure subscribers that this work alone would fully justify the existence of the Society. For reasons readily understood, it is not possible to give details, but the exceptional service rendered has been the means of renewing hope and happiness to many a sorely troubled soul.

RELIEF.

The serious financial position of the Society, with its heavy bank overdraft, has limited the powers of the Board in providing work and relief for the indigent and unemployed. Fortunately, some of the deaf and dumb in a position to help, have themselves been most generous. One deaf lady, Miss Alice Graham, contributed no less than £300 during the year, a sum of £57 was provided from the S. Moss Fund, and Mr. F. E. Frewin raised £35. Other small sums were received totalling altogether upwards of £400. All of which have been used to supplement the Board's efforts in helping the unemployed and those in need.

EMPLOYMENT FOR THE DEAF AND DUMB.

The greatest problem that all Adult Societies are faced with is the fitting of the deaf and dumb to fill their positions as independent self-supporting citizens.

Public opinion needs to be educated to the fact that the deaf mute, notwithstanding his double handicap, is a social asset, and, so far as wage-earning goes, given proper training and opportunity, is capable of marching side by side with the normal. Almost all the deaf, on leaving school, can be trained to at least maintain themselves, the majority as skilled manual craftsmen, no matter what their scholastic standard may be.

Unfortunately, even under the best of existing conditions, it is difficult for the deaf to obtain employment. This is not because they are not so skilled or capable as hearing workers, but because of the popular exaggeration of supposed difficulties of communication with them, and the general lack of knowledge on the part of the public as to their real mental and manual capabilities.

At the present time, with the many thousands of skilled unemployed, it is hopeless for the deaf and dumb to get situations. When applying with a crowd of hearing men, no matter how skilled the deaf may be, they stand no chance of selection, although in many cases they would be the most desirable employee.

The present hope is that influence may be brought to bear upon municipalities, and employers with large numbers of employees, each to give work to just one deaf mute in their locality. This would absorb the whole of our unemployable deaf mute citizens.

SUNDAY AFTERNOON CONFERENCES.

During the winter months, the Principal held frequent Sunday Afternoon Conferences with the members of the Congregation, when matters pertaining to the welfare of the deaf and dumb were discussed. These gatherings were well attended, and were the means of inspiring and setting on foot many active undertakings by the deaf in aid of their fellow members.

After the Conferences, tea was provided at a nominal charge, and a majority of those attending stayed to Divine Worship in the evening.

INTERSTATE VISIT.

An event which brought the capabilities of our younger people to the fore was the Interstate visit of deaf and dumb cricket teams from New South Wales and Tasmania at Christmas. The whole arrangements were in the hands of junior deaf members of our Society, under the Chairmanship of the Principal, and the majority of the visitors, over 100, were the guests of the Melbourne deaf for ten days. A very significant testimony to the past work of this Society. The New South Wales "Silent Messenger" pays the following tribute to our people:—

"The Carnival was one of, if not the most successful, since the inauguration years ago. The 1931 fixture, which lasted ten days, was one of great joy

and education to the deaf, not only those who were visitors, but the Victorian deaf themselves give evidence of this. The Reception Committee, with such a full programme, was set a heavy task

Every need, small or large, was attended to, every detail was carried out punctually and well, and never was there any delay in keeping to the timetable laid down."

Referring to the farewell dinner "The Messenger" said:

"This was the most brilliant gathering ever held in connection with the Interstate Carnivals. The company was excellent. The toasts were honoured in the true spirit of comradeship and without any intoxicating liquor. The finishing scenes were remarkable for the manifestations of joy and happiness, which prevailed right throughout the Carnival."

Needless to say, we are all very proud that the deaf of Victoria should be so highly praised by the New South Wales visitors.

INTERPRETING.

The Principal and the Welfare Officer are frequently called upon to interpret for the deaf, investigate or mediate in special cases, and for these purposes the Principal has visited several country towns during the past year.

GEELONG BRANCH.

Monthly services have been conducted by the Principal or the Missioner throughout the year, and the attendance of the deaf has been good. A very happy social, arranged by the Hon. Secretary of the Branch, Mrs. M. Piper, was held. The Board of Management adds its appreciation to those of the local deaf to Mrs. Piper for the splendid work she has done in the interest of the deaf of Geelong during the year. Her assistance has been invaluable, especially in cases which necessitated prompt action.

BALLARAT BRANCH.

A Branch has recently been formed in Ballarat and much enthusiasm displayed by the local deaf in securing quarters for their meetings, etc. The outlook for both of these Branches is most encouraging, and well justifies their existence.

THE DEAF COMMITTEE.

It is the policy of the Society to encourage the "Local Self-Government" of the internal activities by

means of committees of deaf members under the Chairmanship of the Principal. These cover practically the whole of the life of the Church, Institute, and Club House, including the arrangements for Divine Worship, Lectures, Classes, Socials, Entertainments, Picnics, the Library, Billiard Room, Bank, Magazine, Men's Guild, Women's Guild, Lacrosse, Cricket, Tennis and Hockey Clubs. The report of the Deaf Committee, from which we give extracts, speaks for itself, and the Board of Management records with pleasure its appreciation of the splendid work done by these loyal helpers on behalf of their fellow deaf.

THANKS.

The Board of Management much appreciates and heartily thanks Mrs. F. W. Spry and the ladies associated with her for their interest and efforts in promoting a Ladies' Auxiliary for our Society. Already three branches in different centres have been organised and successful functions held for the raising of money.

During the past year several of our members have found it necessary to seek hospital attention, and the Board of Management here records its indebtedness and sincere thanks for the exceptional kindness shown by the medical officers, nurses and staffs of the Alfred, the Victorian Eye and Ear, and the Melbourne Hospitals.

To Drs. W. J. Craig and F. May the Board of Management extends grateful thanks for the continuous care and attention freely given to the big Home family during the past year.

HOME AND FARM.

The Home and Farm Committee has experienced considerable pleasure in their parental oversight of the inmates of the Blackburn Home during the past twelve months.

The Home is a very necessary adjunct to the work at Jolimont Square headquarters, where are dealt with that section of our big family which needs immediate temporary shelter or permanent protection and care. Although at times, owing to the very nature of the object of the Home, there are clouds due to physical and mental sickness or the passing on of older inmates, the ruling atmosphere is a happy one. There is an absence of almost everything pertaining to institution life. It is a home and a family in all its phases, each inmate being interested in the well-being of the other

and everyone willing to help the less fortunate and less able. Each is given some occupation of interest beneficial to health—some in the cultivation of flowers, others in the vegetable garden or care of poultry, the women in the work of the domestic side of the Home.

Additions, improvements and repairs are an urgent need at the Home, but, with a heavy overdraft and greatly reduced income, any movement in this direction is not possible at present.

During the year the inmates have been given many pleasing changes, including a trip down the Bay, which was made possible by the kindness of Mr. Evans, of the Bay Steamers Ltd., who again granted free passes for the trip, and several ladies and gentlemen who annually donate toward the expenses of the outing, whose names will be found elsewhere; Cinema exhibitions at the Home, and for these sincere thanks are extended to Mr. Sutherland, of Kodak Ltd., and the Managers of Metro-Goldwyn Mayer and Australia and New Zealand Pictures Ltd. Also a Christmas Party, when the Chairman and Mrs. Armstrong distributed presents to the inmates from the Board of Management, after they had partaken of real Christmas dinner.

The Home is supplied with an abundance of vegetables from its own garden all the year round and, during the summer, fruit, from which the Matron has also made several hundred pounds of jam and a large quantity of tomato sauce. The farm has a cow to supply the Home with milk, and sufficient poultry for all egg requirements.

The Committee is satisfied that the economic conditions existing cannot be improved upon.

EXTRACTS FROM

The 44th Annual Report of the Deaf Committee

1931 - 1932

To the Members.

Ladies and Gentlemen,

Your Committee has both pride and pleasure in presenting to you its Annual Report for the year ending 31st March, 1932.

Pride, because so much has been accomplished in spite of the serious State-wide financial depression which must, of necessity, curtail its efforts on behalf of the Society. For what we have been able to accomplish, the pleasure it has given us to do so has more than repaid us for the worry and anxiety experienced during the past months.

The Committee trusts that you will feel a similar satisfaction.

In a Society such as ours, there are certain activities that go on the same year after year, and in that direction our wants are the same, so is our method of relieving them. But, on the other hand, it is the unexpected happenings which your Committee, ever on the alert, finds it harder to deal with. And at this point we would like to say how much we appreciate the hearty co-operation of the members of the General Board in not only making the usual financial grant to enable us to carry on, but in their willingness to advise and help. On each occasion that their assistance was sought they cheerfully responded, and right here we thank them.

The year just past has had many good outstanding features, among them being:—

Unemployment.

The splendid efforts of the Deaf Committee to relieve our unemployed have been marked with success. One member of the Church congregation, Miss Alice Graham, has contributed upwards of £300, which was distributed in relief and relief labour, and she continues her gift of £27/12/6 per month. Also £57/10/0 from the late Solomon Moss Fund, and £30 raised by

Mr. F. E. Frewin and his helpers, have been distributed in the same way. A hot mid-day meal, open to all deaf, has been provided every Tuesday and Thursday and conveniences for these and other meals, with hot water, tea, sugar and milk always available. Also, in many other ways our unemployed deaf have been assisted.

Sunday Afternoon Conferences.

A series of round-table talks was held from August to November in the Assembly Hall, and the attendance and interest was most encouraging, as many as forty being present on occasions, 35 staying to tea and afterwards attending Divine Worship in the Church. It was pleasing, too, to see so many of the younger members of the congregation at these Conferences, and to find them afterwards actively assisting in the several movements there inaugurated.

Interstate Visit.

Your Committee is pleased to be able to report a very successful Interstate visit of the Deaf from the various States at Christmas, and to record the kindly and complimentary appreciation of our efforts on their behalf paid by the New South Wales and Tasmanian Adult Deaf Societies to our Deaf Reception Committee, which, with the single exception of the Chairman (The Principal), was composed of our younger generation—The Misses M. Dow, Elsie Stephens, Alice Smith; Messrs. H. Puddy, W. Ashby and E. R. Noble, with J. M. Johnston as Hon. Secretary and Jack McLean as Hon. Treasurer. Your Committee is pleased to be able to report that the Interstate visit at Christmas was a success in every way.

The programme was a long and a full one, and went through without a single hitch. It included five days Interstate Cricket Test matches between Interstate teams for the "E. J. D. Abraham" Shield, Tennis Tournaments between the same States, a motor drive to the Dandenongs, a trip down the Bay with lunch and high tea on board, a ball, a banquet, and other features, which made the occasion an exceedingly happy one for the visitors as well as our own folk.

Sale of Work.

One of the results of the Round Table Talks was a sale of work, which was wholly an effort on the part of Deaf members of the congregation successfully led by Mr. F. E. Frewin, assisted by Mrs. Swain, Mrs.

Boortz, Mrs. E. Johnson and others, when nearly £70 was raised and divided between the unemployed and the Interstate Reception Fund.

Religious Services have been regularly conducted each Sunday throughout the year, and whilst the members, through lack of employment, have had to consider travelling expenses, the attendance on the whole has been good.

Our little Church continues to draw hearing visitors, and expressions of appreciation of its beauty are heard on all sides.

Communion Services have been held quarterly, and the Hospital Sunday Service on 8th October resulted in the sum of £8 being sent to the Hospital Sunday Fund. In our opinion, a very creditable effort by our members.

The Harvest Thanksgiving Service on the 6th March was well attended. The large number of gifts sent in and the work of displaying same testified to the gratitude many hearts must have felt to the Giver of all good things for such a beautiful little Church.

The Church offertory for the year amounted to £43/6/7.

Every Thursday evening a short service has been held from 8 to 8.15 p.m., irrespective of parties, etc., a fair number of members always attended the service first, the influence of which is manifest.

The Men's Guild held their usual fortnightly meetings, and although the attendance did not come up to that of the previous year, several excellent papers were given and discussed, and many happy evenings spent. Lectures were given by hearing men and women and excellent slides and films typical of the subject shown. The annual picnic was held on A.N.A. Day at Point Ormond.

The Women's Guild continued their monthly meetings and has had a most successful year. The attendances were well maintained and much good has resulted.

During the year, owing to the death of the President, Mrs. F. E. Frewin, it was, by mutual agreement of the members, decided to disband the Workers' Guild. This step was not taken without serious thought, for all regretted that a Club that once did

such splendid work should cease to function. The Women's Guild, however, agreed to take over the activities of the Club and carry on the good work, in addition to the general efforts of the Guild.

Many worthy and pleasing tributes were paid to the valuable work done by the late Mrs. F. E. Frewin, and a beautiful photo of her now hangs in the Women's room of our Club, the joint gift of the Workers' Club and Women's Guild.

The annual picnic of the Guild was held in January. It took the form of a river trip to Ivanhoe, where lunch was partaken of. Tea at the Centre was followed by games, etc.

Sports.

Outdoor games are as popular as in former years with our younger members.

The Lacrosse Club showed a slight improvement and the Club has been placed in "Junior A" Section, and has, therefore, missed being in the fortunate Four for the premiership.

The Cricket Club, as usual, entered in the V.J.C.A. competition, but showed indifferent form this season. They entered a team for the "E. J. D. Abraham" Interstate Shield Competition last Christmas, but failed to win. Altogether it was a difficult year for the Club, mainly through unemployment. To help the finances a most successful King Competition was held, which, under the direction of Mr. W. H. Crush, resulted in a substantial sum being raised, enabling the Club to clear its expenses in the Interstate matches.

The Tennis Club passed a quiet year, having withdrawn its entry for the St. Kilda District Association Competition owing to lack of practice. At Christmas the Club held its second Championship Matches, which proved very successful and enjoyable.

The Hockey Club is as popular as ever. The last season did not show as many wins as hoped for, but the experience gained will prove of value in the future. Several very successful socials were held in our Assembly Hall and the Club's fund considerably augmented.

Rallies.

The King's Birthday Rally, held on the 8th June,

was a great success. As usual, a large crowd assembled and a very happy one it was. Several hearing members of the Board were present. A very special ceremony was performed. It was the unveiling of a photo of Miss Alice Graham by herself. The photo was presented to the Society by Miss Bessie Graham, sister to Miss Alice. It is a delightful picture of Miss Graham, and we are grateful to her sister for presenting it.

October 9th brought the thirtieth anniversary of our Principal's work in Victoria, and a large and enthusiastic crowd attended the Rally which was given in his honour on 24th September (Show Day).

The annual Christmas Rally was held at our Centre on the 15th December. The General Board being the hosts on this occasion, most of the members made jolly speeches appropriate to the Christmas season, and which caused much laughter and merriment. Mr. Porter, of Kodak Ltd., gave a fine cinema entertainment, and Father Christmas (Mr. Mortimer) was very popular with the kiddies upstairs, where gifts of all kinds and sweets were handed out.

Picnics.

The annual picnic of the congregation was, as usual, arranged for Cup Day, but owing to lack of employment making it impossible for our members to spend railway fares, it was held at Yarra Park, which is quite close to Jolimont Square. Meals were partaken of at the Club House and sports held in the Park, and all agreed it was one of the nicest picnics we have had.

On the 18th February, the Home inmates' annual picnic down the Bay was held. This year, all unemployed deaf, with their wives and families, were invited to thoroughly enjoy the outing.

The "Victorian Deaf" Magazine carried news of the doings of the Deaf to the Deaf scattered throughout the State, together with many features of exceptional interest, to the Deaf. The magazine has now entered upon its third year, and the Committee wish to thank the subscribers for their financial support toward the cost of production, also the friends who have contributed items of interest for publication.

The Committee here acknowledges its indebtedness to the Hon. Editor for his self-denying labours during the past year.

Deaf Savings Bank.—The Hon Manager reports that during the year just ended the sum of £538/0/11 was deposited, whilst the withdrawals amounted to £744/4/4 by the members, leaving a balance at credit of £242/3/3.

A pretty Christening Ceremony took place in our little Church on 25th January, 1931, when the infant daughter of Mr. and Mrs. G. Quantock was christened by Canon Crotty, of Holy Trinity, East Melbourne. The little girl was named Nancy Victoria.

Births.—A son to Mr. and Mrs. Alf. Tyzzer, on 22nd April, 1931; a son to Mr. and Mrs. J. Hunt, on 26th March, 1932; a daughter to Mr. and Mrs. A. Sutherland, on 20th June, 1931.

Marriages.—At our Church on 30th January, 1932, William Burge to Sylvia Branson; at our Church on 19th March, W. T. Anderson (hearing) to Rose Cram.

Obituary.—We regret to record the passing of our esteemed member, the late Mrs. F. E. Frewin, on the 17th May. She left behind her a wonderful record and a splendid example for the younger generation to follow.

Also of our old friend, Peter Clarke, on the 15th July; William Skewes, of our Blackburn Home on 24th August; Jessie Wright, another old member, in September, 1931; Mrs. Robert Mills, of Waaiaam, on 27th October; William Monahan, on 6th December; Maria Flynn, of our Blackburn Home, on October 18th, 1931.

Our sympathy is extended to the bereaved.

Your Committee desires to express its appreciation of your confidence in it, and trust that the happy harmony now existing will long continue, and finally hope and pray that the Almighty Benefactor will continue to bless its work and those who assist us.

ADULT DEAF AND DUMB SOCIETY OF VICTORIA (INCORPORATED)

General Revenue Account for Year Ended 31st March, 1932

To Salaries Principal and Staff	£1106 17 8		
" Office, Travelling, Postages, etc.	128 17 8		
" Earnings of Deaf Mute Employees and Travelling Expenses	835 18 9		
" Printing and Stationery	93 4 1		
" Lighting and Fuel	80 12 11		
" Rates, Taxes and Insurance	12 15 1		
" Collectors' Car Expenses	28 13 8		
" Alterations and Repairs	21 0 1		
" Cleaning	24 12 0		
" Interest on Overdraft, E., S. & A. Bank Ltd.	88 18 6		
" Audit Fees	26 5 0		
" Rent of Administrative Headquarters	250 0 0		
" Relief of Indigent Cases	411 10 5		
" Grants Deaf Committee and Honorariums	50 0 0		
" Sundries	57 18 9		
" Depreciation on Plant, Furniture, etc.	60 19 9		
	£3278 4 4		

N. ARMSTRONG, Chairman.
L. A. CLEVELAND, Hon. Treasurer.

By Subscriptions	£2057 17 8		
" Deaf Mute Church Collections	43 6 7		
" Special Donations and Grants	809 18 6		
	£2911 2 9		
" Balance, Expenditure over Receipts	367 1 7		

Examined and found correct,
O. R. MACDONALD, Chartered Accountant (Aust.)
May 23rd, 1932. Auditor.

£3278 4 4

Farm and Home Maintenance Account for Year Ended 31st March, 1932

To Wages of Staff and Inmates	£680 3 0		
" Pensions and Allowances to Inmates	273 11 11		
" Repairs and Replacements	64 19 6		
" Maintenance	573 15 11		
" Horse and Poultry Feed	54 14 6		
" Seeds, Manure, etc.	11 17 3		
" Sundries	72 16 0		
" Rates, Taxes and Insurance	178 14 11		
" Freight and Cases	30 2 3		
" Light, Fuel and Power	77 16 0		
" Commission on Sales of Produce	4 3 0		
" Motor Van Expenses	17 12 6		
" Depreciation on Furniture, etc.	129 3 7		
	£2169 10 4		

N. ARMSTRONG, Chairman.
L. A. CLEVELAND, Hon. Treasurer.

By Sales of Produce	£318 6 5		
" Maintenance Receipts for Inmates	1158 4 6		
" Donations	54 0 0		
" Hire of Sports Ground	11 15 6		
	£1542 6 5		
" Balance, Expenditure over Income	627 3 11		

Examined and found correct,
O. R. MACDONALD, Chartered Accountant (Aust.)
May 23rd, 1932. Auditor.

2169 10 4

JOLIMONT SQUARE PROPERTY

Revenue Account for Year Ended 31st March, 1932

To Rates, Taxes and Insurance	£254 11 0
” Repairs	87 3 0
” Interest on Mortgage	683 7 6
” Collection Expenses, Cleaning, etc.	44 11 6
	£1069 13 0

N. ARMSTRONG, Chairman.
L. A. CLEVELAND, Hon. Treasurer.

By Rents from Tenants	£756 8 7
” Rent of Administrative Quarters	250 0 0
” Balance, Expenditure over Income	£1006 8 7
	£1069 13 0

Examined and found correct,
O. R. MACDONALD, Chartered Accountant (Aust.)
May 23rd, 1932. Auditor.

JOLIMONT SQUARE PROPERTY

Schedule of Assets as at 31st March, 1932

Property, at cost	£25,000	0	0
Improvements	1,332	10	0
Tennis Court	309	17	0
Rents outstanding	37	6	1
	£26,679 13 1		
Less Mortgage	£11,000	0	0
Interest accrued	149	3	9
	11,149 3 9		
	£15,530 9 4		

BLACKBURN FARM AND HOME

Schedule of Assets as at 31st March, 1932

Property, at cost	£10,479	12	11
Stock, Furniture and Improvements (less depreciation)	870	17	3
Amount due for produce	86	11	2
	£11,437 1 4		

ADMINISTRATIVE HEADQUARTERS

Schedule of Assets as at 31st March, 1932

Furniture (less depreciation)	£194	8	0
Plant (less depreciation)	47	0	0
Cinema (less depreciation)	5	12	6
	£247 0 6		

N. ARMSTRONG, Chairman.
L. A. CLEVELAND, Hon. Treasurer.
Examined and found correct,
O. R. MACDONALD, Chartered Accountant (Aust.)
May 23rd, 1932. Auditor.

General Balance Sheet as at 31st March, 1932.

LIABILITIES.		ASSETS.	
Flora Timms' Legacy	£475 16 0	Jolimont Square Property, as per schedule . .	£15,530 9 4
Unexpended Balances Special Funds for Un- employed Deaf	87 12 3	Blackburn Farm and Home, as per schedule	11,437 1 4
Sundry Creditors	140 19 10	Administrative Headquarters, as per schedule	247 0 6
E., S. & A. Bank Ltd., Overdraft	1963 17 11	Motor Vehicles for Collector and Deaf Salesmen (less depreciation)	77 17 6
General Fund at 31st March, 1931	£24,287 12 7	Petty Cash	11 6 8
Add—			
Transfers from Special Funds	1,405 6 8		
	<u>£25,692 19 3</u>		
Less Transfers—			
General Revenue	£367 1 7		
Farm and Home	627 3 11		
Jolimont Estate	63 4 5		
	<u>1,057 9 11</u>		
	24,635 9 4		
	<u>£27,303 15 4</u>		
N. ARMSTRONG, Chairman.		Examined and found correct,	
L. A. CLEVELAND, Hon. Treasurer.		O. R. MACDONALD, Chartered Accountant (Aust.)	
		May 23rd, 1932. Auditor.	

Trust Funds as at 31st March, 1932

S. Moss Hall Building Trust	£1887 2 8	Sundry Investments	£2003 11 5
Debt Redemption Funds	110 8 9		
Funeral Trust	6 0 0		
	<u>£2003 11 5</u>		
N. ARMSTRONG, Chairman.		Examined and found correct,	
L. A. CLEVELAND, Hon. Treasurer.		O. R. MACDONALD, Chartered Accountant (Aust.)	
		May 23rd, 1932. Auditor.	

Chapel Fund as at 31st March, 1932

Fund as at 31st March, 1931	4074 6 5	Chapel Building, at cost	£2736 18 0
Interest	7 7 9	Church Furniture, at cost	289 9 6
	<u>£4081 14 2</u>	Transfer. General Fund	£3026 7 6
			1055 6 8
N. ARMSTRONG, Chairman.		Examined and found correct,	
L. A. CLEVELAND, Hon. Treasurer.		O. R. MACDONALD, Chartered Accountant (Aust.)	
		May 23rd, 1932. Auditor.	

LIFE GOVERNORS.

Chas. W. Campbell, Esq.	J. R. Schutt, Esq.
Mrs. S. Luke	A. S. Wales, Esq.
E. R. Peacock, Esq.	V. Y. Kimpton, Esq.
Henry Masterton, Esq.	Mrs. V. Y. Kimpton
Mrs. Masterton	H. V. McKay Pty. Ltd.
G. G. Mercy, Esq.	H. G. Beecham, Esq.
H. Sumner Martin, Esq.	J. T. Webb, Esq.
John Connell, Esq.	Mrs. E. Davidson
Solomon Moss, Esq.	Lady Lyle
Sir Wm. McBeath	J. G. Robertson, Esq.
J. M. Griffiths, Esq.	J. C. Prosser, Esq.
Miss A. C. Graham	Charles Bendall, Esq.
Mrs. Mary St. Clair	Mrs. B. A. Russell
W. A. Drummond, Esq.	Miss B. Graham
William Lawford, Esq.	J. J. Haverty, Esq.
Sol. Green, Esq.	Edgar H. Peacock, Esq.
Miss Johns	Robert Schulte, Esq.
C. L. Forrest Trust	T. Kennon, Esq.

Subscriptions, 1931-1932

Special Grants and Bequests.

Howard and Georgina Berry Benevolent Fund	£50 0 0	Estate of late John Henry	£12 10 0
Trustee of late Alfred Edments	40 0 0	C. D. Lloyd, Esq.	10 10 0
Felton Bequests Committee	40 0 0	Messrs. Spry, Fookes & Co.	10 0 0
Walter and Eliza Hall Trust	25 0 0	Miss A. Gray	10 0 0
Trustees of late T. J. Sumner	21 0 0	Helen Gyles Turner Samaritan Fund	10 0 0
		Joseph Kronheimer Trust	5 0 0

Municipalities.

Shire of Blackburn and Mitcham	£53 0 0	Shire of Gordon	£1 1 0
City of Melbourne	15 0 0	Shire of Moorabbin	1 1 0
City of Hawthorn	10 0 0	Shire of Tungamah	1 1 0
City of Brunswick	5 0 0	Shire of Bellarine	1 0 0
City of Collingwood	5 0 0	Shire of Broadmeadows	1 0 0
City of Sandringham	3 3 0	City of Northcote	1 0 0
City of Ballarat	2 2 0	Shire of Werribee	1 0 0
City of Footscray	2 2 0	Shire of Wimmera	1 0 0
City of St. Kilda	2 2 0	Borough of Portland	10 6
Shire of Deakin	1 1 0	Shire of Whittlesea	10 6

SPECIAL DONATIONS	£71 6 0
SPECIAL DONATIONS PER LORD MAYOR'S FUND	49 0 2
SPECIAL DONATIONS FOR ANNUAL PICNIC DOWN BAY	7 14 6
CONTRIBUTIONS FROM DEAF TENNIS CLUB	15 0 0
SUBSCRIPTIONS FROM DEAF AND DUMB MEMBERS	43 6 7
MISS ALICE C. GRAHAM'S UNEMPLOYED RELIEF FUND	305 10 0
MISS ALICE C. GRAHAM'S CHURCH GARDEN FUND	26 0 0
SKIPTON LADIES' AUXILIARY	5 0 0

Country Subscriptions.

COLLECTED BY N. S. WEBB.

Allansford	£2 5 0	Kerang	£8 11 0
Ararat	9 6 3	Koroit	6 1 3
Avoca	3 11 0	Linton	3 9 0
Bacchus Marsh	5 19 3	MacArthur	3 16 0
Ballan	2 11 3	Maryborough	7 18 6
Ballarat	69 3 1	Merino	3 8 6
Beaufort	2 17 3	Mildura	29 18 2
Birchip	4 15 3	Mortlake	4 1 6
Boort	5 2 6	Murtoa	5 14 0
Branxholme	7 9 6	Nhill	5 0 0
Camperdown	11 12 0	Ouyen	5 7 9
Casterton	9 1 6	Penshurst and Caramut	3 12 6
Charlton	3 18 0	Port Fairy	6 19 0
Clunes	3 5 0	Portland	11 6 6
Colac	11 7 6	Quambatook	3 2 0
Coleraine	5 12 6	Rainbow	4 13 7
Creswick	3 4 6	Rupanyup	5 7 3
Daylesford	6 7 6	Sea Lake	10 16 9
Derrinaltum and Lismore	2 19 6	Skipton	2 14 0
Dimboola	5 5 6	Stawell	8 14 3
Donald	3 15 3	Swan Hill	7 18 6
Dunolly	3 3 6	Terang	3 15 0
Geelong	88 8 9	Terang and Noorat	8 19 3
Hamilton	15 1 0	Ultimo	2 5 9
Hopetoun	4 19 2	Warracknabeal	8 0 3
Horsham	11 16 2	Warrnambool	23 18 0
Inglewood	4 18 0	Winchelsea and Birregurra	7 16 9
Jeparit	5 0 3	Wycheproof	10 11 0
Kaniva	4 8 9		

COLLECTED BY W. TAYLOR.

Beechworth	£19 1 3	Myrtleford	£9 15 11
Bendigo and Suburbs	48 14 4	Nagambie	4 19 0
Bowman's Forest	2 0 6	Nathalia	4 7 6
Bright	5 17 8	Numurkah	10 4 11
Castlemaine	17 8 8	Ovens	11 6
Chiltern	4 15 11	Porepunkah	2 4 0
Cobram	3 14 9	Ramsay	2 15 6
Dookie	14 6	Riddell	1 9 8
Echuca	18 11 7	Rushworth	6 15 8
Everton	1 6 0	Shepparton	16 19 1
Gisborne	1 15 0	Sunbury	2 15 0
Kyabram	4 2 1	Tallangatta	9 6 2
Kyneton	7 14 6	Tallygaroopna	4 0
Lancefield	1 15 7	Taradale	10 6
Longwood	1 16 6	Tatura	4 19 6
Macedon	2 11 3	Tongala	1 8 6
Malmsbury	2 5 3	Wangaratta	27 15 0
Merrigum	1 4 6	Wodonga	11 12 5
Moama	2 8 0	Woodend	3 7 10
Mooroopna	4 9 0	Yackandandah	4 19 3
Murchison	4 11 10		

COLLECTED BY E. A. S. HIBBERT.

Dandenong	£1 18 9	Pakenham	£1 2 6
Dromana	1 16 3	Portsea	12 6
Drouin	1 1 6	Rosebud	1 1 3
Frankston	2 5 3	Rye	10 10
Garfield	13 0	Sorrento	3 6 2
Mornington	3 8 10	Warragul	2 3 0

Country and Suburbs.

COLLECTED BY A. E. STEPHENS.

Ascot Vale	£3 4 9	Briagalong	£1 15 6
Bairnsdale	11 4 8	Broadmeadows	5 6
Bass	17 6	Bruthen	3 16 9
Bayswater	1 3 3	Campbellfield	5 9
Belgrave	1 7 6	Clematis and Selby	11 6
Bena and District	17 0	Cockatoo	10 9
Blackburn	3 10 8	Cowan	1 7 4
Boisdale	17 6	Cranbourne	6 7 5

Croydon	£2 16 4	Newry and Tinambra ..	£1 11 6
Doncaster	3 4 6	Nowa Nowa—Buchan ..	2 6 3
Drouin and District ..	2 6 3	Nyora	1 5 1
Eltham and Diamond Creek	2 16 5	Olinda	1 0 0
Emerald	1 5 0	Omeo	3 19 9
Essendon	11 19 5	Orbost	6 10 2
Fern Tree Gully	1 14 0	Outtrim	11 0
Gembrook	1 11 6	Pascoe Vale	3 10 11
Glenarry	7 6	Paynesville	1 19 6
Glenroy	1 14 3	Poowong	3 14 9
Greensborough	1 5 9	Ringwood	3 13 3
Heyfield	2 11 9	Rosedale	1 6 1
Hurstbridge	16 1	Sale	12 7 8
Inverloch	1 10 0	San Remo	1 4 9
Jumbunna and District ..	1 19 0	Sassafras	16 6
Koo-wee-rup	2 4 6	Stratford	3 0 10
Lakes' Entrance	7 5 0	Tecoma	9 8
Lang Lang	1 9 6	Templestowe and District	6 1 8
Lilydale	7 8 8	Thorpedale	2 8 0
Lindenow	17 0	Toongabi	1 2 9
Loch	3 2 6	Tooradin	7 6
Maffra	7 5 8	Upwey	5 0
Millgrove—Westcott ..	1 0 9	Warragul	2 7 4
Mitcham	2 11 0	Warrandyte	1 7 0
Monbulk	1 4 9	Warburton	5 10 3
Moonee Ponds	1 8 11	Wonthaggi	14 15 10
Mossiface, Ensay and District	17 9	Vermont	1 2 11
		Yarra Junction	2 3 6

Melbourne.

COLLECTED BY A. C. MUIR.

Total amount collected, £102/15/10.

COLLECTED BY E. JOHNSON

Total amount collected, £225/7/4.

Suburbs of Melbourne.

COLLECTED BY M. G. B. MORTIMER.

Total amount collected, £525/1/3.

COLLECTED BY E. R. NOBLE.

Total amount collected, £138/17/6.

WE THANK the proprietors of the following publications for daily and weekly copies of their paper: "The Age," "The Leader," "Stead's Review," "Christian Science," "Labour Call," Mr. Chapman for Magazines, and also some anonymous givers.

The Board of Management much appreciate the kindness of many hotel-keepers, boarding-house proprietors and friends in providing free or at reduced rates accommodation to the Collectors, and herewith extend their thanks for same. For the sake of economy, amounts from each district are acknowledged here. Individual subscribers receive personal receipts.

Adult Deaf and Dumb Society of Victoria

The aim of this Society is to make
Full and Complete provision for the
whole of the Adult Deaf and Dumb of
this State, and to bring into existence
conditions that will, so far as is humanly
possible, open to our Deaf and Dumb
citizens the opportunities available to
the normal citizen.

The Society has a debt of £11,000 on its Jolimont Square property and needs funds for buildings to adequately house its many activities.

Form of Bequest



I bequeath the sum of £ : : to the
Treasurer for the time being of the Adult Deaf &
Dumb Society of Victoria, for the use of the said
Society, for which the receipt of such Treasurer shall
be a sufficient discharge.

Manual Alphabet as used by the Deaf and Dumb

