

WHERE ARE YOU GOING ON WEDNESDAY AFTERNOON? BEFORE DECIDING GLANCE THROUGH THIS BOOKLET

# LAKE PARK · BLACKBURN.

ELEVEN MILES FROM MELBOURNE

THE IDEAL PLACE FOR PIC-NICS.



The most beautiful spot around Melbourne.

SPECIAL TRAIN EVERY WEDNESDAY at 1.55 p.m. from Flinders St. to Blackburn, 1st 1/2, 2nd 11d. return

# LAKE PARK, BLACKBURN

## Melbourne's Beauty Spot



**T**HIS picturesque estate, over seventy acres in extent, has been purchased by the Committee of the Adult Deaf and Dumb Society of Victoria, for a Flower Farm for Deaf Mutes, the idea being to provide light occupation for that section of the Deaf and Dumb who, by reason of physical weakness, etc., are unable to follow other regular employment. A Home for Aged and Infirm Deaf Mutes will also be erected thereon.

This lovely park, with its ornamental lake covering over eleven acres, and surrounded by the scenic beauty of hill and valley, with numerous shady woodland spots that are deliciously cool even on the hottest of days, makes an ideal spot for picnics.

To close it to the public would be to shut the people out from one of, if not the most delightful pleasure resorts around Melbourne.

The public subscribed the money to purchase this magnificent property, and the success of the scheme will depend upon their continued interest.

LAKE PARK, BLACKBURN.



FAIRYLAND WITHIN EASY DISTANCE OF MELBOURNE

---

LAKE PARK, BLACKBURN--(CONTINUED)

---

*The Park will therefore remain open as a Public Pleasure Resort.*

An attempt is to be made to maintain the Farm and Home from the revenue received from the hire of boats and sale of flowers and refreshments. Thus the public will have the satisfaction of knowing that whilst enjoying a pleasant outing, they are helping to maintain one of the most necessary institutions of the State, and without any additional expense to themselves.

Every effort will be made to make Lake Park the favourite picnic ground of the Churches, Sunday Schools, Clubs, and Associations of Melbourne and suburbs. It will be kept free from the rowdy and often very objectionable element that is, unfortunately, so prominent a feature of most public pleasure resorts.

The Park will be under the management of Mr. Ernest J. D. Abraham, the founder of the Farm and Home for Deaf Mutes, and superintendent of the Adult Deaf and Dumb Society of Victoria, to whom secretaries and superintendents are invited to make application for further particulars.

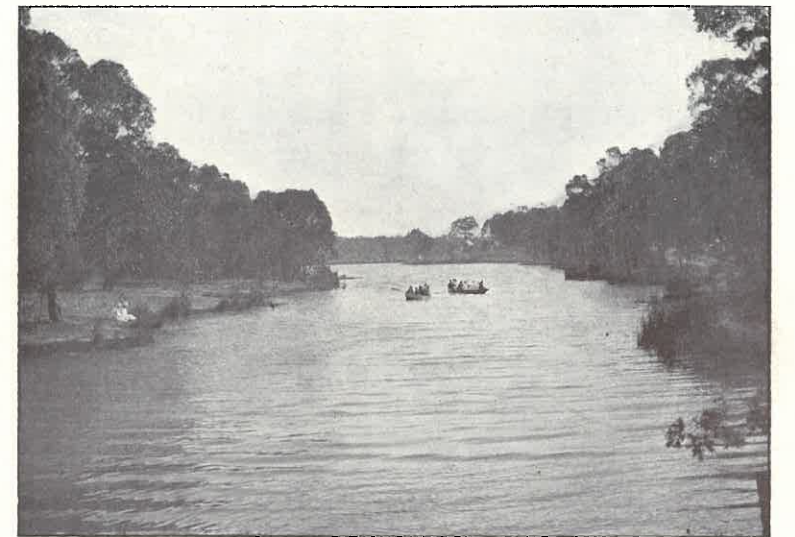
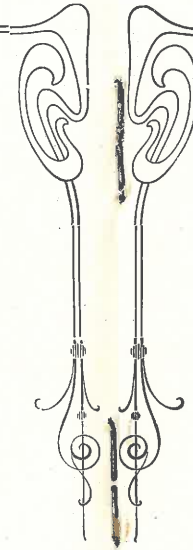
OFFICE: 32 FLINDERS STREET,  
MELBOURNE

FOR VARIETY OF SCENERY AND SUITABILITY FOR PIC-NICS



LAKE PARK, BLACKBURN, SURPASSES ANYTHING TO BE FOUND  
ANYWHERE WITHIN 20 MILES OF MELBOURNE

THE VIEWS IN THIS BOOKLET SPEAK FOR THEMSELVES



IT IS DIFFICULT TO REALIZE AMID SUCH SURROUNDINGS THAT ONE IS LESS THAN 12 MILES FROM MELBOURNE



## NOTES

**Blackburn is but a mile beyond Box Hill.**

**Lake Park is Less than eight minutes walk from Blackburn Railway Station.**—You pass the Recreation Hall and Moreton Park on the left, then turn to the left.

The **return** fare from Flinders Street Station is 1/2 First, and 11d. Second.

A special train leaves **FLINDERS STREET for Blackburn every Wednesday Afternoon at 1.55.**

All descriptions of Picnic requisites may be obtained at the **Refreshment Cottage in the park.** Hot water, milk, summer drinks of all kinds, lollies, tea, sandwiches, scones, etc., etc., at Moderate Prices. Cold water and fuel for large picnic Parties bringing their own provisions, can also be obtained. Swings, bats, balls, etc., provided without any charge. Boats on hire by the hour or half-hour. Ample provision for erection of Marquees, boiling of water, etc.

We can arrange to cater for any number of children or adults. **Just tell us what you require,** and we will quote price.

An express train leaves **PRINCES BRIDGE for Blackburn every Saturday at 1.55 p.m.**

For further particulars apply to **Mr. ERNEST J. D. ABRAHAM,**  
32 Flinders Street, Melbourne.

**THIS BOOKLET IS A TICKET OF ADMISSION FOR YOURSELF AND PARTY OF FRIENDS.**



**SPEND YOUR WEEKLY HALF HOLIDAY AT THIS DELIGHTFUL  
SPOT, AND YOU WILL NEVER NEED A DOCTOR**

RAILWAY TIME TABLE

**MELBOURNE TO BLACKBURN (DAILY)**

From PRINCES BRIDGE—8.7, 8.52 a.m., 12.15 p.m.  
,, FLINDERS ST.—9.35 a.m., 1 p.m., 3.40 p.m.

**WEDNESDAY AFTERNOON SPECIAL**

From FLINDERS ST. at 1.55 p.m.

**SATURDAYS**

From PRINCES BRIDGE—1.55 p.m.  
,, FLINDERS ST.—1.35 p.m., 2.5 p.m.

**BLACKBURN TO MELBOURNE (DAILY)**

5.24 p.m., 6.53 p.m., 7.29 p.m., 8.52 p.m., 9.37 p.m.,  
10.39 p.m.

**SATURDAYS**

4.27 p.m., 6.9 p.m., 6.53 p.m., 7.52 p.m., 8.52 p.m.,  
9.37 p.m., 10.39 p.m.

EXCELLENCE AND PURITY!

DRINK

G. H. BENNETT'S  
Aerated Waters and  
Cordials.

SUPPLIED AT THE LAKE.

Spend your WEDNESDAY and SATURDAY

Afternoons at

## LAKE PARK, BLACKBURN

---

---

SPECIAL TRAIN 1.55 p.m. from Flinders Street every  
Wednesday.

EXPRESS 1.55 p.m. from Princes Bridge every Saturday

RETURN FARES, 1st Class 1/2, 2nd Class 1ld.

---

---



LIGHT REFRESHMENTS AT TOWN PRICES  
BOATS ON HIRE

**THIS BOOKLET ACTS AS A TICKET OF ADMISSION FOR YOURSELF AND PARTY OF FRIENDS**

PEACOCK BROS. PRINTING COMPANY