

KEW RIOSITY

DECEMBER 1992

City of Kew, Municipal Offices, Charles Street, Kew 3101. Telephone: 853 2466



Carols by Candlelight

Sunday 20 December 1992 at 8.30pm in Petrie Square.

Over the years Carols by Candlelight has become a celebration that many Kew families eagerly await. This year a balmy summer evening, with lots of community singing and entertainment for everyone has been planned. Highlights of the evening will include music from our award winning Kew Band.

A great night out for all the fami-

ly, the Carols are also an opportunity to help others who are not so fortunate. Families are invited to bring along any pre-loved toys which can be distributed by St Vincent de Paul and the Salvation Army to children who otherwise may not be able to celebrate a happy Christmas. There will also be a special appearance by one of Santa's special helpers who will be at the Carols to collect the toys.

Carols by Candlelight is an ideal opportunity for the Kew community to come together in a spirit of peace on earth and goodwill to all. Please join us.

INSIDE

**New Waste Collection
Services for Kew
Pages 8 & 9**

CHIEF EXECUTIVE'S COLUMN

Mayor's Summer Concert

A free 'Summer Concert' will be held by the Mayor, Cr Roger Stree-
ton on Sunday 21 February 1993. A
special opportunity for the commu-
nity to get together and enjoy our
beautiful gardens, the concert will
be held from 2.00pm to 4.00pm in
Petrie Square, on the corner of
Cotham Road and Charles Street,
Kew.

The award winning Kew Band
will provide entertainment along
with many other entertainers and
some good old favourites. Refresh-
ments will be served and some seat-
ing will be provided.

An invitation is extended to all
members of the community, with a
special welcome to the elderly. Per-
sonal invitations will be sent to
nursing homes and senior citizens
in Kew.

Further details will follow early
in the new year.

Help Us To Help You

One of our most effective
methods for finding problems and
solving them before they become
major headaches, is advice from our
residents. Normally however, resi-
dents see these problems after office
hours, on weekends or driving to
and from home. Because we are all
busy people, it is not always possi-
ble to report the problem to
Council.

To increase our responsiveness,
Council has now installed a tele-
phone message service for after

hours use, whereby residents may
telephone and leave a message for
Council to address during normal
business hours.

Such things as reporting pot
holes, dirty laneways, dumped rub-
bish, blocked drains, vandalism or
anything else which is a problem
can be reported. You may even like
to leave suggestions as to how we
can improve our City.

Each weekday morning, the mes-
sages are passed onto the relevant
Council staff to follow through. The
number to call and leave your mes-
sage is 854 5299.

This new service will provide in-
creased convenience to residents



*Chief Executive, Malcolm
Hutchinson*

and help us to maintain a high level
of service.

*The Mayor,
Councillors and Staff at
the City of Kew
wish all their residents
**A MERRY CHRISTMAS
AND A
HAPPY NEW YEAR.***



ALL ASPECTS
OF
LANDSCAPE
DESIGN
CONSTRUCTION
MAINTENANCE

FREE
LANDSCAPE
CONCEPT
PLANS

habitat
landscapes

482 3694

XAVIER BY NIGHT 1993

CLASSES IN COMPUTER LITERACY, LANGUAGE, MATHS FOR
PARENTS, MUSIC, LITERATURE APPRECIATION, ETC., WILL
COMMENCE IN FEBRUARY 1993 AT XAVIER COLLEGE, KEW.

PLEASE DIRECT ENQUIRIES TO ROSEMARY CURTAIN
(BH) 854 5411 (AH) 817 5919

MAYOR'S COMMENT

December is a time when everyone focuses on the festive season and the holiday break. For many in our community, the traditional holiday may not be possible this year due to financial constraints. For those who cannot get away, may I strongly recommend that they make themselves familiar with the Kew Recreation Centre. This Centre is one of the jewels in our crown as it offers a range of high quality facilities at a very modest cost. The YMCA, who manage the Centre on behalf of the City of Kew, have planned a wide range of special activities during the holiday period.

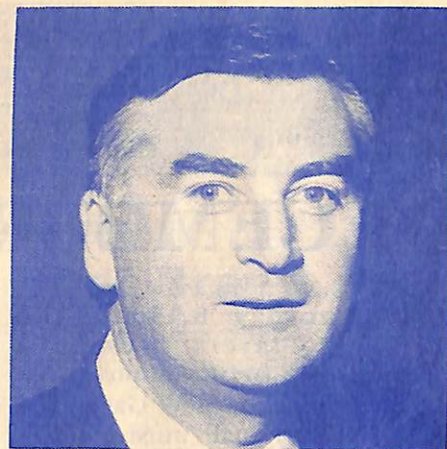
The Recreation Centre is holding a sausage sizzle for all regular patrons and interested visitors from 7.00am to 8.00am on Thursday 17 December. I shall have the role of short order cook and will also launch details of the Summer Program at this breakfast. To complete the Christmas spirit, a choir will sing a collection of traditional carols. I look forward to welcoming those brave enough to be there on this morning.

Due to the outstanding success of the Recreation Centre, some of the facilities, especially the 'dry' areas like the gymnasium and aerobics area, have not been able to cope with the public demand. Always conscious of the need to reappraise the level of customer service to Centre users, the Recreation Centre committee have developed an exciting new concept which will provide additional areas to expand the gymnasium and activities. These concept plans are on display at the Centre during December and January for public assessment and comment.

Another exciting project for Kew is the next stage in our waste management strategy. Tenders for the supply of crates for recycled material and the mobile garbage bins for domestic waste will soon be called. The crates and mobile bins are scheduled for delivery to households by mid next year.

Part of the waste management strategy calls for a comprehensive public education programme. This will be in the form of a special brochure together with special articles in *Kewriosity*. One of the features of the education programme will be a recycling information hotline and a range of displays to be used in information booths. Pages 8 and 9 of this issue, and the February edition of *Kewriosity* will contain more information on this subject. I am extremely grateful to the members of the waste management committee for all their good work so far on this major Council initiative.

In closing, let me extend to each



Mayor of Kew, Cr Roger Streeton

and every one of you the compliments of the season, and a safe and enjoyable Christmas season from all my fellow Councillors and Staff at the City of Kew.

Christmas Celebrations in the Junction

The Kew Junction Shopping Area will be open all day on Saturday 12 and 19 December for Christmas trading.

These additional Christmas trading hours offer residents an opportunity to shop 'at home' and support the local community. What a great opportunity to meet up with friends and neighbours in High Street, Cotham Road or Walpole Street and celebrate our own special suburb.

The Kew Junction Area offers a range of 160 owner-operated shops retailing a wide variety of goods and offering special, friendly service. This year many retailers are taking Christmas celebrations out into the streets. Tables laden with stock will be out on the footpaths and all our fabulous eating places will be 'doing lunch' in style under the umbrellas. Visit your old favourites and meander into the exciting new shops that have recently sprung up.

There will be plenty of fun for all the family with sausage sizzles,

wine tastings, give-aways, and plenty of discounts. Look for the special activities in the participating shops and get ready to sample some of the delicious free morsels our delis and cake shops will have on offer.

There will be musicians and performers in the streets, choirs in the carparks, our own Kew City Band, as well as the Kew Recreation Centre Aerobics Team strutting their stuff!

FREE car parks are available in Fenton Way, Walpole Street and Brougham Street and there are no meters in High Street or Cotham Road. Or try leaving the car at home and make it a fun day on the MET. The Kew Junction can easily be reached by tram and/or bus.

Saturday 12 & 19 December are when its all happening. Get together with the community in the main street and celebrate Christmas in our fabulous green suburb away from the hustle and bustle. Come and enjoy all it has to offer!

DIARY DATES

DECEMBER

12 Saturday 8.15pm, The Hartwell Players present A Christmas Carol. Adopted from Dickens' novel by Steve Gagen and featuring original musical, this promises to be an exciting production. Performances 12, 18 & 19 at 8.15pm, with matinee performances at 2.00pm on 13 & 20. Tickets \$10 (\$6 concession). For bookings call Rebecca Knox on 826 6505.

13 Sunday 1.00pm, North Kew Tennis Club are holding a 'Tennis Wake/ Tennis Tournament Social Day to commemorate leaving the 'old' Tennis Club, cnr Peel Street and Grandview Terrace, Kew. Anyone wishing to attend should call Barbara Adams on 898 3614 to register. New members are always welcome, phone the Club's Secretary on 853 3085.

16 Wednesday 11.00am, Kew Legacy Widows Club meet at RSL Hall, 63 Cotham Road. Join the club for its annual Christmas Party with entertainment and basket lunch. Bookings and enquiries: 853 7049. All Legacy widows welcome.

20 Sunday 8.30pm, Carols by Candlelight in Petrie Square (in front of the main entrance to the Municipal Chamber). Kew Ministers' Fraternal, organizers of the Carols, invite all members of the community, especially children, to join in this typically Australian Christmas celebration.

We hope for a fine night so that people may sit on the grass but it is a good idea to bring folding chairs, rugs and cushions to ensure maximum comfort. Carols booklets and

candles will be on sale and all proceeds will benefit Kew High School Chaplaincy Fund.

JANUARY

1 Friday 7.00pm, The Kew Chess Club meets at Kew Community House, 6 Derby Street every Friday. New members are always more than welcome. For more information please contact Shane Booth on 853 5553.

13 Wednesday, The Boroondara Bushwalkers meet to walk on the second Wednesday of each month. The walks are graded 'easy' and are usually cover a distance of 10 to 12 km. The Bushwalkers also offer a full range of weekend and longer walks and as well as other activities such as cross country skiing. For more information, please write to Thelma McManis, PO Box 355, Kew 3101.

14 Thursday 7.30pm, Kew Festival Committee Meeting. Next year's Festival will be focusing on Kew's largest 'industry', education. Anyone who can spare a little time, and would like to contribute some ideas about the celebrations would be warmly welcomed by the Committee. Young people with fresh new ideas are especially welcome. Monthly Committee Meetings are held every second Thursday of the month at 7.30pm in the Municipal Offices, Charles Street.

22 Friday 10.00am-3.30pm, Junior Tennis 'Fun Day', Kew Tennis Club, Adeney Ave. Children 8 to 16 years are invited to a fun day of tennis coaching and a lunchtime sausage sizzle. Bring a racquet and wear flat soled runners. \$5 per person. Others interested in local tennis? Membership and club enquiries welcome. Call and inspect the club or phone 816 9905.

Dates To Watch For

- The Mayor's Summer Concert on Sunday 21 February 1993 in Petrie Square.
- The Kew Festival runs from the 13th to 28th March 1993. With many of Kew's renowned schools involved, next year's 'education' festival promises to be bigger and better than ever.

More information in the next edition of *Kewriosity*.

KEWRIOSITY DEADLINES

Kewriosity is a community newspaper which welcomes contributions from residents and local community groups. There will be no edition of *Kewriosity* in January, but readers can look forward to another edition in February. Items for the **February edition** must be submitted **before January 12 1993** to the Editor Katina Brighton, City of Kew, Municipal Offices, Charles Street Kew, 3101.

COUNCIL NEWS

New TV Translators Benefit Residents

The City of Prahran has arranged for the establishment of a television translator on the roof of the Como South Yarra building to improve television reception for residents of that City. Prahran advises that this translator is now operational and could be of benefit to some residents of Kew who suffer poor television reception.

Potential areas of poor reception are in Studley Park, particularly alongside the river, where the topography shields the television signals from Mount Dandenong.

The translator picks up the television signals transmitted from Mount Dandenong, boosts them and re-transmits the signals on a different Ultra High Frequency (UHF) channel.

Five separate translators are used for each channel that is re-broadcast. Channels 2, 7, 9, 10 and 28 are re-transmitted as channels 61, 49, 52, 55 and 58.

To make use of this facility, residents television sets and VCRs need to be re-tuned to the new channels. A new antenna directed towards the translator may also be required.

Residents who already have satisfactory television reception do not need to make any changes.

For further information a UHF hotline has been set up by the Department of Transport and Communications on 008 077 361.

Recreation Centre Carpark Extension

Council has recognised the need to provide additional carparking space to cater for the Recreation Centre's increasing popularity. A 39

space extension to the northern side of the existing carpark has been proposed and comments from interested parties about the proposal are invited for consideration by Council in February. Subject to consideration of those comments, construction is expected to being in April/May 1993.

A plan of the carpark is on display at the Recreation Centre. For further information please contact Council's Physical Services Department on 854 5277.

Fire Prevention

Council's fire prevention program comes into operation with the advent of summer.

In order to prevent and minimise the possibility of fires spreading within the municipality, owners and occupiers are encouraged to keep their land free from undergrowth. Grass, weeds and any other material which are likely to constitute a source of fuel for fire, or a fire menace to property, should be cleared.

If any residents are aware of vacant land or unoccupied premises which are likely to cause a fire menace please contact Heather at Council's Local Laws Section on 854 5213.

Dog Registration for 1993/94

Council will commence a new computerised Dog Registration system for 1993/94.

Renewal of registration notices will be forwarded separate to the rate notice prior to April 1993.

To enable Council to check and update records, all owners of dogs are requested to complete and return both sections of the registration form with the appropriate fee. If you no longer have a dog, please mark 'no dog' and return the form.

Dog registration fees

	<i>Standard Fee</i>	<i>Pensioner's Fee</i>
Sterilised dog:	\$30.00	\$17.50
Unsterilised dog:	\$40.00	\$22.50

Residents with any further queries should contact Heather at Council's Local Laws Section on 854 5213.

Watch That Brand

With gardens now budding and blooming, most people would have already completed their annual pruning of trees and shrubs. However there may still be an area which requires attention — those low branches overhanging footpaths which could prove dangerous to blind or vision impaired people.

Please take the time to inspect the front of your property and remove any low hanging branches. This simple task could prevent a serious injury.



Closing Dates During the Christmas Holidays

MUNICIPAL OFFICES

Council's administrative offices in Charles Street will be close at 2.00pm on Thursday 24 December and reopen at 8.45am on Tuesday 29 December 1992. The offices will also be closed on Friday 1 January 1993. On all other days during the holiday period, the offices will operate during the usual hours of 8.45am to 5.00pm, with the cashier's office closing at 4.30pm.

GARBAGE COLLECTION

Garbage will be collected as usual except on Christmas Day and New Year's Day. The Heidelberg Transfer Station will be closed on Thursday 24 December, Christmas Day, Boxing Day and New Year's Day.

RECYCLING DEPOT — COUNCIL DEPOT

The depot in Princess Street will be closed for Christmas Day and New Year's Day only.

COUNCIL MEETING DATES

Monday 14 December 1992	7.30pm	Review Committee
Tuesday 15 December	6.30pm	COUNCIL MEETING
Tuesday 2 February 1993	7.30pm	Operations/Planning & Development Committees
Tuesday 9 February	7.30pm	General Purposes Committee

Meetings are held in the Committee Rooms and Council Chambers at the Municipal Offices. Entrance is via the main portico off Cotham Road.

All these meetings are open to the public. Copies of the agendas are available for inspection at the loans desk of the Kew Library.

KEW LIBRARY

The Kew Library will be closed from Christmas Day until Tuesday 29 December, when it will be open as follows:

Tuesday 29	10.30am-6.00pm
Wednesday 30	10.30am-6.00pm
Thursday 31	10.30am-6.00pm
Friday 1 January 1993	Closed
Saturday 2	9.00am-12.00 noon
Sunday 3	12.00pm-5.00pm
Monday 4	Closed
Tuesday 5	Reopen Normal Hours

OCCASIONAL CARE CENTRE

The centre will be closed for occasional care from 4.30pm 17 December 1992 until 8.30am Tuesday 26 January 1993. Telephone enquires regarding enrolments from Monday 25 January.

IMMUNISATION

This program will resume on Wednesday 13 January 1993.

MATERNAL & CHILD HEALTH CENTRES

Between Christmas and New Year a roster system will operate for phone calls and appointments where necessary:

Tuesday 29 December 1992
— Denmark Street, Kew
Wednesday 30
— Pakington Street, Kew
Thursday 31
— Strathalbyn Street, East Kew

KEW CITIZENS ADVICE BUREAU

The Bureau will close from 3.00pm Friday 18 December 1992 until 10.00am Monday 11 January 1993. From 11-29 January the Bureau will be open weekdays 10.00am-2.00pm. Normal hours, 10.00am-3.00pm weekdays, will resume on Monday 1 February 1993.

KEW TRAFFIC SCHOOL

The Traffic School will be open from 10.00am to 3.00pm weekdays from 4 — 25 January 1993.

Christmas Services

Anglican

Holy Trinity (High Street)

Christmas Eve 11.30pm

Christmas Day 8.00am & 10.00am

St Paul's (Windella Avenue, East Kew)

Christmas Eve 11.30pm

Christmas Day 8.00am & 10.00am

St Hilary's (John Street)

Christmas Eve 11.30pm

Christmas Day 9.00am & 10.30am

Baptist

Kew Baptist (Highbury Grove)

Christmas Day 9.30am

East Kew Baptist (Woodlands Avenue)

Christmas Day 9.30am

Catholic

Sacred Heart (Cotham Road)

Christmas Eve 7.30pm, and 10.00pm (in Dutch)

Christmas Day 8.00am, 9.30am & 11.00am

St. Anne's (Windella Avenue)

Christmas Eve 7.30pm

Christmas Day 10.30am

St. Joachim's (Barnard Grove)

Christmas Day 9.00am

Church of Christ

East Kew (Valerie Street)

Christmas Day 9.30am

The Uniting Church

Kew Uniting (Highbury Grove)

Christmas Day 9.30am (at Kew Baptist)

East Kew Uniting (Normanby Road)

Christmas Eve 11.30pm

Christmas Day 9.00am

New Waste Collection

As part of a new waste management strategy to make Kew a cleaner and more attractive place to live, residents are urged to maximise their recycling and composting efforts to conserve our natural resources and minimise the costs of waste collection and disposal.

Just about every type of waste put out in garbage bins can be reduced by recycling. Almost 60% of garbage consists of food and garden wastes which can be composted, and almost 40% of wastes placed in garbage bins can be recycled using the existing recycling services provided by Council.

Waste minimisation is greatly helped by residents separating recyclables and re-usable items from the other garbage. As part of the strategy designed to make Kew a more waste efficient City and reduce the amount of waste taken to landfill, Council will directly provide all residential properties with the following improved waste collection services at a reduced cost:

Improved Domestic Garbage Collection

Weekly collection of domestic waste using 120 litre mobile garbage bins will commence next year. Like the current garbage tins in use, any solid non-toxic domestic waste may be disposed of in these new bins. The cost of this service will be covered under the Council's existing waste services charge.

The advantages of these bins are many fold. The two wheels make

them much easier to manoeuvre than the standard garbage tin. Their solid sturdy construction makes them leak proof and almost dog proof, and the fixed hinged lid will always seal in odours. The system of mobile bins also offers improved safety for collection crews.

The real benefit lies not just in the bin but in the whole waste management strategy. Most households in Kew put out two or three 55 litre garbage bins each week. The 120 litre mobile bins should easily meet the needs of these households. Many residents will probably never fill their new bin because more than half of their waste will be collected by other services.

Those households that do generate greater volumes of waste will have the choice of a 240 litre bin instead of a 120 litre bin. However, to encourage greater use of Council's recycling services and minimise the waste going to landfill, 240 litre bins will only be supplied **upon payment of an additional annual charge of \$100.**

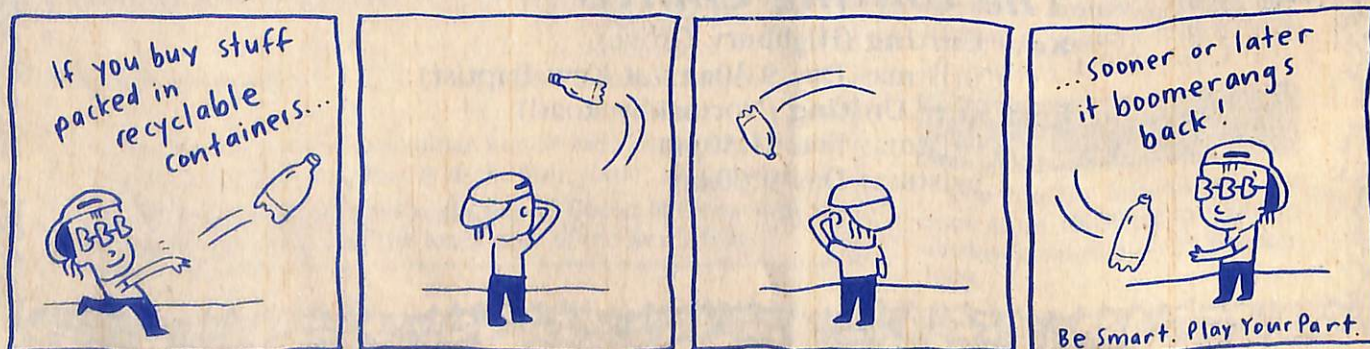
Council will introduce the new garbage system in 1993. Early next year each household will receive a questionnaire asking it to select a 120 litre bin or the alternative 240 litre bin.

Upgraded Domestic Recyclables Collection

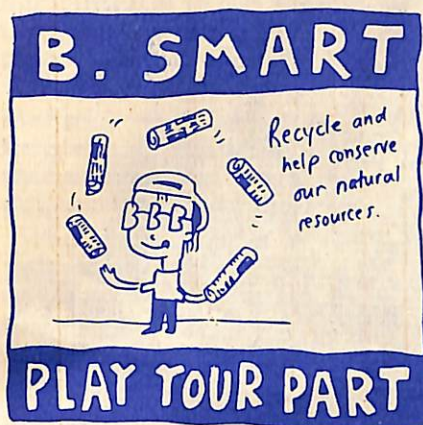
The weekly collection of recyclables (currently glass, paper, cardboard, aluminium, PET, HDPE and vinyl plastic bottles) will continue. However all Kew households will be issued with recycling crates to replace their existing recycling bags. Trials conducted in Kew last year, showed that using a solid container instead of a bag increased recycling collection from 52% to 79%. Bags tend to get dirty and are sometimes blown away. A crate is easier for most people to use and is retained by the household. This service is also funded from the existing waste services charge and will commence next year.

Recycling Centre

Council's Depot will continue to operate as a recycling centre for glass, paper, cardboard, PET plastic, plastic plant pots, HDPE & vinyl plastic bottles, aluminium and old clothes. Hours are 8.00am to 3.00pm Monday to Friday and 10.00am to 2.00pm on Saturday, Sunday and Public Holidays (except Christmas Day, New Years Day, Good Friday and Anzac Day).



Services for Kew



Heidelberg Transfer Station

The Council is committed to maintaining access for Kew residents to dispose of wastes. Residents are able to tip at the Heidelberg Transfer Station in Waterdale Road at the same charges that apply to Heidelberg residents. A rate notice or similar proof of Kew residency is required.

Continuing Hard Rubbish & Garden Rubbish Collections

Council will continue to collect hard rubbish and garden rubbish. This service is for the disposal of large household goods and items of garden waste. In keeping with Kew's commitment to recycling, all appropriate materials collected by this service are recycled. All suitable garden wastes are shredded for mulch, which is then used in Council's parks and gardens.

Garden Waste Collection

In addition to the hard and garden rubbish collection, a pre-booked garden waste collection will be provided for an 'at cost' fee. This service will commence in 1993.

Backyard Composting

Compost bins are available for purchase by residents 'at cost'. Contact Council's Physical Services Department for further advice on composting or to purchase a bin.

Medical Wastes

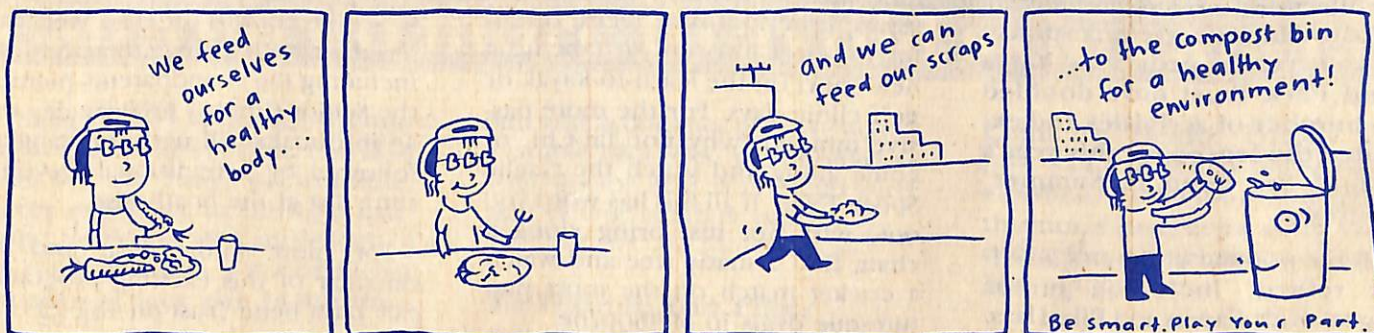
Provision of containers for medical wastes and sharps, and arrangements for disposal, are supplied by Council 'at cost'. For more information contact the Health Section.

Toxic Waste Disposal

Toxic wastes and chemicals are not collected or disposed of by the City of Kew. Melbourne Water conducts this service on a regional basis. Information about toxic waste disposal can be obtained from Melbourne Water on 615 5547.

This comprehensive range of improved services is designed to meet the needs of residents in an environmentally and cost effective way. Continued community involvement in these initiatives will ensure Kew enters the next century as a cleaner and greener City.

Further information about Council's new waste management services will be distributed to households early in 1993 or contact the Physical Services Department on 854 5277.



KUMON

KEW STUDY CENTRE
PHONE: 817 1013

Mathematics & English Tuition

- Individualised program for all ages.
- Special pre-school program for children from 2 years of age.
- Develops confidence through easy starting point and mastery of each new concept.
- Success through daily exercises.
- Strengthens weak students.
- Challenges average and bright students.
- Monthly fee: Primary \$50.00. Secondary \$55.00.

MLC HOLIDAY PROGRAMS

- ♦ Full day programs from 8 am to 6 pm or sessional activities
- ♦ Qualified, experienced staff

For girls and boys 5 - 14 years

Computer camps
Science workshops
Art, craft, music
Drama
Film making
Sports clinics
Cookery

For senior students

Computer skills for VCE
Pre-driver education
Life drawing workshops

MLC HOLIDAY PROGRAMS

207 Barkers Road, Kew 3101 Enquiries and enrolment: 810 1412/1426

adc 32376

Round the Bend this Summer



Following the great response to last year's program, Yarra Bend Park Trust have doubled the number of activities and extended the season for this year's 'Round the Bend in Summer' program.

All the popular children's activities return, including Junior Rangers, Kids Kapers and Bike Days, plus the new puppet theatre and story telling sessions. Family activities have been extended this year with the inclusion of bush dancing, campfire nights and musical performances.

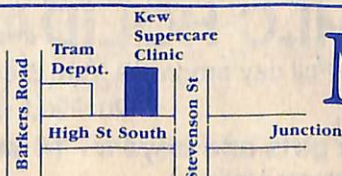
The magnificent riverside bushland is a great location for investigating the parks natural systems with bird lurks, dawn walks, possum prowls, nightwatchers, natural history walks, seed collecting days, local history tours and the extremely popular Yarra night rows.

The sports mad can try their hand in the ultimate frisbee twilight

series, criterium bike races, orienteering or a fun run, or take up a new sport on the learn-to-kayak or golf clinic days. For the more passive minded, why not Tai-Chi, or come along and watch the Gaelic Sports Expo. If all this has worn you out, why not just bring along a chair, find a shady tree and watch a cricket match on the most picturesque ovals in Melbourne.

Senior citizens are also well catered for with a range of activities, including the Grandparents picnic, the Senior Citizens mystery day or an informal stroll with the Ranger followed by a traditional Devonshire Tea at the boathouse.

For more information and a calendar of this exciting program call Yarra Bend Trust on 482 2344.



KEW SUPERCARE MEDICAL CENTRE

25 High St (South) Kew

- * General Practitioners (male & female)
- * Casualty Service
- * Medical Physiotherapy
- * Pathology
- * Podiatry

**Bulk
Billing**

- * Work Injury Rehabilitation
- * Weight Loss Program
- * Asthma & Allergy Clinic
- * Immunisation Clinic
- * Home Visits

Telephone 853 1400

Monday-Friday: 9.00-12.00 & 3.00-7.00 — Saturday: 9.00-12.00

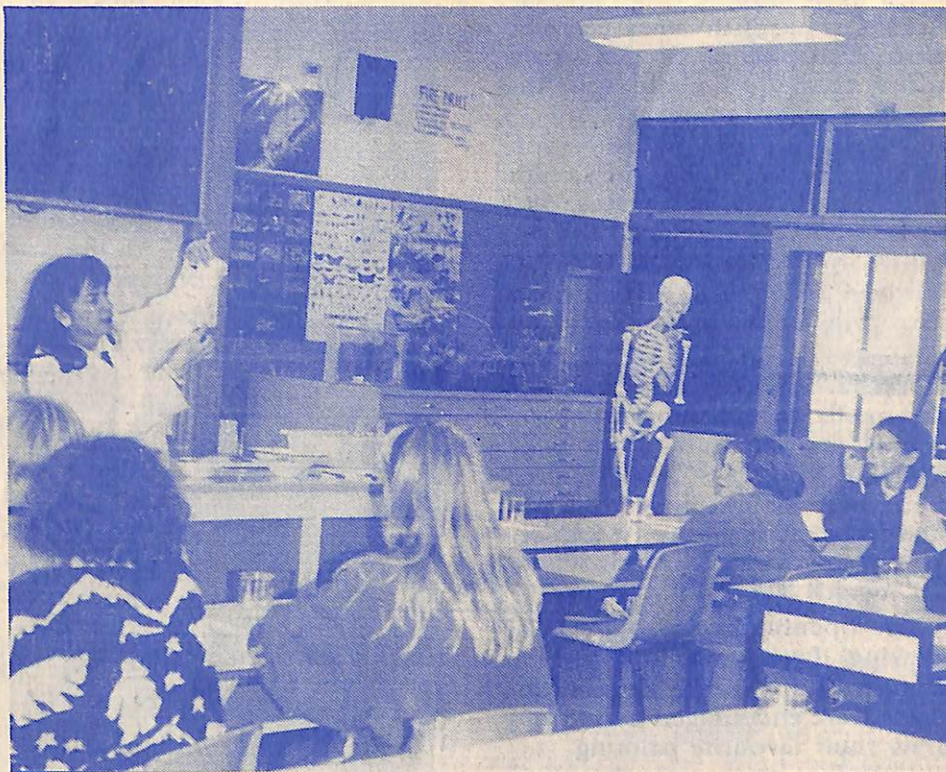
Science & Computers at Kew High School

Grade 5 students from Kew primary schools displayed a keen interest in the Science and Computer Day held by Kew High School during the last week of November. Nearly two hundred students from Kew Primary, East Kew Primary and Deepdene Primary School participated in this inaugural event.

The students performed science experiments in the school's laboratories and worked with modern IBM and Apple Macintosh computer technology in the computer centre.

Kew High School's Principal, Mr Alan Taylor was very pleased with the response to the open day. 'Kew High is particularly strong in the maths, science and computer area and it was a pleasure to be able to offer primary school students from our local community some hands on experience. I trust many will be inspired as a result of this day and undertake successful academic courses in this area.'

The day was so successful that Kew High School intends making this an annual event.



Grade 5 Students learn about science & computers at Kew High's open day.

Can you do more to avoid skin cancer?

Skin cancer is the most common cancer in Victoria. It is also one of the most preventable. Over exposure to sunlight during childhood and adolescence is recognised as a major factor in skin cancer risk in adults.

With two out of three Australians likely to develop skin cancer during their lives, everyone of us is at risk. A fair skinned person who doesn't tan, but goes red in the sun is at greatest risk and those who have been exposed to Australia's sun during childhood seem to be more at risk than those who moved here in adulthood. Skin cancer is also more common in people of Celtic (Scottish, Irish, or Welsh) background.

Skin cancers take a variety of forms and are often easier to detect early as they are more visible. If you notice anything unusual on your

skin which does not go away within a couple of weeks, you should see your doctor. If it is checked early skin cancer is rarely painful.

To reduce the risk:

- Avoid the sun in the middle of the day between 11.00am and 3.00pm
- Use protective clothing (a wide brimmed hat and long sleeve shirt)
- Use maximum protection sunscreen (SPF 15 plus)
- Stay in the shade where possible
- Make sure that children are well protected.

A comprehensive range of information on sun protection behaviour and related issues may be obtained free of charge from

Council's Health Office. Call 854 5244 to learn more about sunsmart behaviour, children in the sun, sunscreens, ultra violet radiation, solariums, sun spots and aging skin.

FRANK SEDGMAN TENNIS CENTRE

Stratford Avenue, Kew

\$10 Half Price Tennis Day & Night

Mod Grass Courts

(offer valid until 31 December 1992)

LADIES MORNINGS

JUNIOR COACHING
MIXED TENNIS NIGHTS

Phone: 853 1233

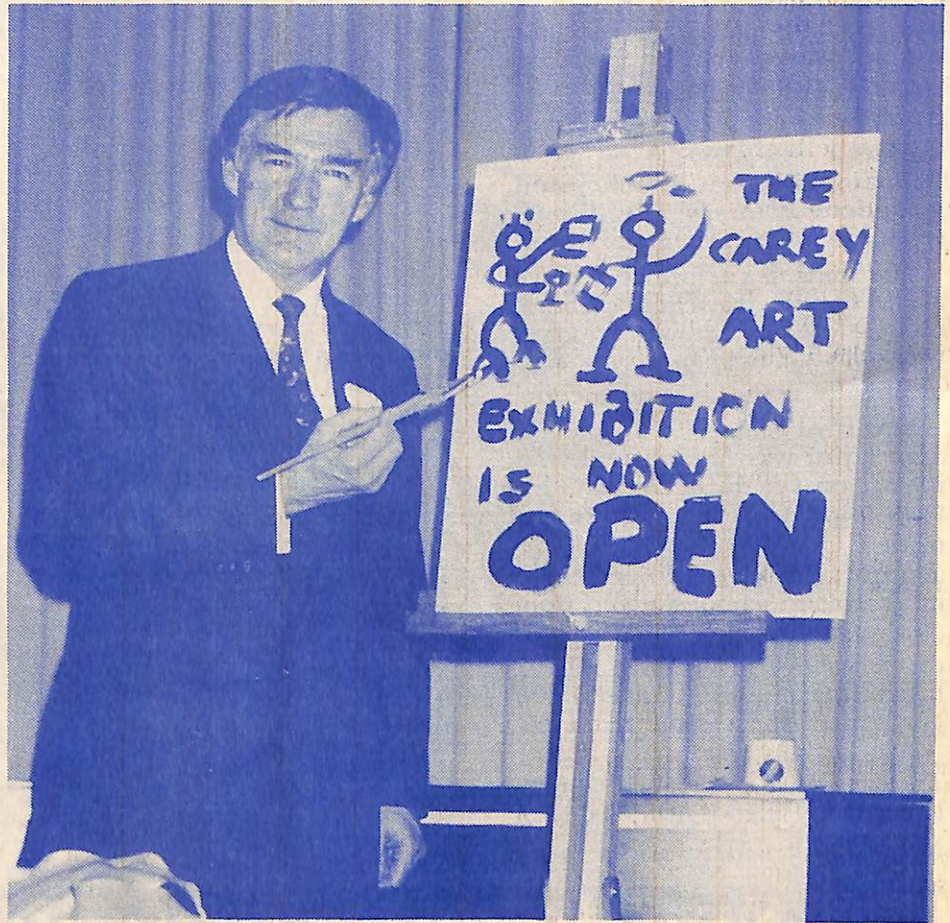
Carey's Inaugural Art Exhibition

The inaugural Carey Foundation Exhibition of Art drew more than 200 visitors to the official opening on Friday 23 October. Guests were entertained by student musicians while the Principal Dr Ross Millikan formally declared the Exhibition open with great flourish and style!

Visitors to the Exhibition were treated to a collection of about 200 works in a wide variety of styles and media, including prints, photographs and sculptures from many well known artists. Also featured were several works by senior Carey students including both 1992 Duces of Art and winners of the School Art Awards.

The opening was also a special viewing day for students of the school, and the most junior students were encouraged to find and draw their favourite painting.

A hard working committee of 20 led by Mrs Anna Bergin spent 12 months preparing for this special event which aims to raise cultural and aesthetic awareness as well as raise money for the further development of art education within the school.



The Principal, Dr Ross Millikan officially declares the Art Exhibition open with an impromptu painting of his own.

Public discussion night on St George's redevelopment

Parking and options for use of the Normanby Road entrance were the main points of concern expressed by residents at a public discussion forum held at Kew Library for the proposed redevelopment of St Georges's Hospital.

Other issues raised by residents were the size of a loading bay off Normanby Road, use of the medical consulting suites, taxi drop points within the hospital site, wider Cotham Road entrance and a pedestrian safety traffic light system, traffic management in Normanby Road, security of confused elderly patients, daily visitations to

the day hospital, the nature of the added geriatric wards, the public community consultation process, future use of the Cecil Street corner site and whether or not the St George's Hospital site is likely to be expanded.

This forum followed last month's public meeting. The architects' model of the proposed redevelopment and a static display will remain at Kew Library until Friday 18 December.

Group Executive Director of St George's Hospital and Inner Eastern Geriatric Service, Mr Malcolm Kinloch described the forum discussions as 'very useful'. He said the

newsletter letterbox drop to 1,500 local residents would be expanded at the suggestion of several residents.

Mr Kinloch said the hospital's redevelopment as an important facility for the health care of older people in Kew and surrounding communities was not in dispute, but issues of adequate on-site parking and Normanby Road were of concern to some residents and several options were being examined.

Residents who were unable to attend and wish to discuss their concerns or make suggestions on the project are welcome to call the hospital on 272 0444.

MLC Hosts International Music Conference

The historic campus of Methodist Ladies College is the venue for the Suzuki Pan Pacific International Conference being held in Melbourne from 2-7 January.

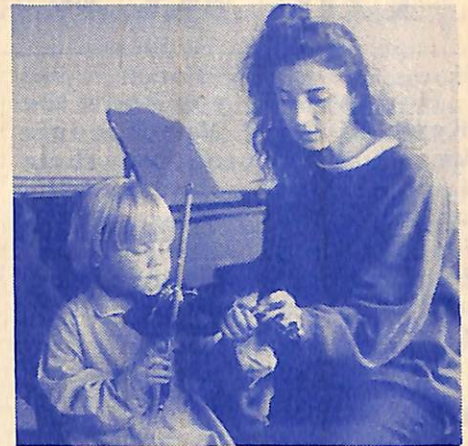
MLC will house the many hundreds of delegates brought together for the Conference. Over 4,000 students, teachers and parents from Japan, Canada, the United States, the Philippines, Korea, Singapore, Brazil, England, Sweden and Finland will attend the five day program.

The aim of the conference is to bring to participants an exciting and wide ranging experience with the

shared language of music. Participants will have an opportunity to meet with and work with some of the great international and Australian musicians, teachers and educators attending the conference.

Highlights of the conference include the Opening Concert at the Melbourne Concert Hall at 2.30pm on the 3rd January, where the M.L.C. Madrigal's will perform.

M.L.C. will also be the venue for daily Lunchtime Concerts. Beginning at 1.45pm on the 4th, 5th & 6th of January, these performances are free and an opportunity for the local community to come and hear talented young musicians.



Kew resident Natalie Berger teaches a young pupil to play the violin.

Avoid Food Poisoning This Summer

The Christmas season from December to late February is a time when many people are either catering for, or arranging external catering of festive functions. Unfortunately this is also the time when the risk of contracting food poisoning is greatest.

In these warmer months, protein rich foods such as meat, poultry, fish, milk, eggs and items containing these ingredients are most likely to be stored or transported at unsuitable temperatures for long periods of time.

The following hints will help you avoid food poisoning this summer:

Catered Functions

- Make sure the caterer is registered with their local Council's Health Office.
- When you receive food, check to see that it is either Hot or Cold and not at room temperature.
- Check to see that the food has been transported hygienically.
- Once delivered, food must not be left at room temperature for long periods of time. Bacteria thrive in temperatures between 10 degrees and 60 degrees celsius.
- Ensure that the food is served in a hygienic manner.

Preparing Food for a Function

- Wash your hands thoroughly before

handling any food. Any cuts must have proper dressing.

- Use fresh ingredients.
- Prevent raw food contacting cooked food by storing raw and cooked foods or 'ready to eat' foods separately and using separate utensils.
- Once prepared, food should be kept hot above 60 degrees or cold below 10 degrees celsius.
- Keep food protected from flies and dust.
- Avoid preparing food if you are suffering from intestinal upsets.

If you would like to know more about food hygiene please contact Council's Health Surveyors on 854 5244.

Jade Kew Chinese Restaurant

Licensed & BYO Restaurant
Our 8 course Peking Duck Banquet normally \$26.80
NOW ONLY \$18.80

EVERY SUNDAY — YUM CHA
BOOK YOUR PRE-CHRISTMAS &
NEW YEARS PARTY NOW!

- *Authentic Cantonese & Czschuan Cuisine
- *Elegant relaxed surroundings
- *Upstairs Function Room 60-80 guests

OPEN FOR LUNCH: Tues-Fri & Sun. Dinner: 7 Nights

4-14 Walpole St
Kew 3101
Tel: 853 3581/2

We are open on Christmas Day
Your Hostess: Linda Lee



KEW CHINESE ACADEMY

Branch of the Chinese Fellowship of Victoria

CHINESE LANGUAGE & CULTURE

The Kew Chinese Academy offers the following courses in partnership with Kew High School: Saturday 9.30am-12.30pm
Kew High School: Burke Road, East Kew

- * VCE CHINESE (Years 11 & 12)
- * CHINESE LANGUAGE — Prep (3-5yrs); Primary (6-11yrs); Secondary (12-16yrs); Adults
- * ENGLISH FOR CHINESE SPEAKERS
- * TAI CHI, SELF DEFENCE
- * CHINESE CULTURE, SINOLOGY, WRITING
- * CHINESE ART
- * BUSINESS COURSES

ENROLMENTS NOW OPEN FOR 1993. Classes begin 30 January
Phone (Mon-Fri) * Mrs Linda Huang 836 3638, * Ms Jessica Chai 752 8317
* Mr Alan Taylor 859 8652

The Kew Library offers all this?

How well do you know the Kew Library? Most people know where to find their favourite authors, but there is more much to the library service than issuing books. Here are just some of the other services and facilities available at Kew Library:

Reservations

Books, records, C.D.'s, videos, cassettes and magazines which are held by the library, but are out on loan, can be reserved. You will be notified by mail when to collect the item. There is a small charge for this service.

Inter-library loans

Books which are not part of the library's stock can be obtained from other libraries, but you will need to give as much information as possible. There is also a small charge for this service.

Listening Posts

There are facilities to listen to cassettes, C.D.'s and records within the library. Ask at the Loans Desk for some headphones.

Red Cross Housebound Service

Red Cross volunteers select books for housebound borrowers.

Phone the library for details. There is no charge.

Newspapers

The library keeps back copies of The Age, The Sun-Herald, and The Australian for 12 months. The Sydney Morning Herald and the Financial Review are kept for six months. The Progress Press is kept on file as part of the local history collection. You can apply for back copies at the Loans Desk. A security deposit is required, but is refunded when the papers are returned.

Family History Research

Microfiche and microfilm readers are available for public use. Do your own research and there is no charge, but bookings are essential. Prints of some material are available at a cost.

Conference Room

The library has a small conference room with a whiteboard and seating for 12 people. The room can be hired on a half daily basis for a charge of \$6.00. No food or drink is allowed and bookings are essential.

Photocopiers

Two copiers are available for public use and re-cycled paper is used. Copyright legislation applies and the Copyright Act is available

at the library. Small amounts of change are also available at the Loans Desk.

Noticeboards

These are available to community groups to publicise meetings and activities.

Displays

Some display space is available for local organisations. Contact Beth Davies for details on 853 6745.

Typewriter

An electric typewriter is available for public use. There is no charge, but bookings are essential. You can also buy recycled paper at the Loans Desk for a small fee.

ADVERTISING

Advertising in Kewriosity is an effective and inexpensive way for local traders to keep the community informed about the services they provide.

Call the Editor, Katina Brighton, on 854 5204 for details about the paper's competitive advertising rates.

No endorsement of services advertised is implied by the City of Kew.



High Street Veterinary Clinic

763 High Street, East Kew

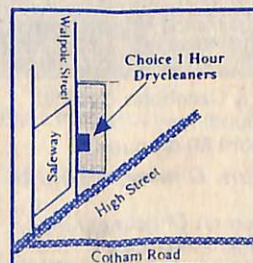
859 7226

Call now to arrange collection of your
COMPLIMENTARY PET. I.D. TAG

Dr. Maurice Newport B.V.Sc.

CHOICE 1 HOUR DRY CLEANING PLANT

at Shop 8, 4 Walpole St., Kew
(opp Kew Safeway)
Telephone 853 0636



- Specialist in Silk, Formal Wear, Wedding Dresses, Blankets, Doo-nas and Curtains
- Laundry Service
- Fast Alterations & Repairs

Any 3 Garments Special for
\$12.90 (except silk, formal
wear & leathers)

In Brief

Cast Members Wanted

The Viola Musical Comedy Society is looking for people to join the cast of their French musical *Veronique*. People are need for two principal parts and to join the chorus. Experience is not necessary. The society rehearses each Tuesday night at 8.00pm in St Hilary's Church hall in John Street, Kew. New members are always welcome and are sure to enjoy the friendly atmosphere. Please call David Keane on 383 1486 for more information.

Reading & Writing Classes

Classes for adults in reading and writing are held in Kew, Hawthorn and Surrey Hills. The number of students in each class is small and the atmosphere is friendly and helpful. The areas covered in the classes are reading, writing and numeracy. Topics which individual students need to focus on are selected from these areas.

Common needs are spelling, punctuation and grammar; learning to use dictionaries and street directories; and learning how to pronounce and use difficult words.

Class fees are \$10 per term (\$1 per lesson). Adults wishing to enrol for next years classes can contact Debbie Noble at the Hawthorn Community House on 818 8919.

Help Needed For Children With Disabilities

The holiday period brings with it the urgent need for volunteer hosts to share in the care of children with disabilities. The onset of the holidays means a decrease in the opportunities that exist in the community for these children. This places an extraordinary large task on their parents, already finding it difficult to lead a normal life.

Interchange is a community based organisation which arranges respite care for children with disabilities. The commitment required by Interchange is simple, just one weekend a month. This give parents

time to enjoy a short break as well as the opportunity to possibly spend more time with each other and their other children. For the children, there is an opportunity to make new friends and develop new communication and social skills.

All volunteers attend two orientation sessions, and are provided with on going support by the Interchange staff throughout the duration of the program. For further information please contact Barbara or Jean on 836 9811.

Saturday Rangers

Weekends can be fun for everybody. Saturday Rangers is a teenage youth group which was formed as part of Interchange. A youth group which meets every two weeks, Saturday Rangers organises Saturday activities for thirteen teenagers with disabilities and eight non-disabled teenagers. Activities include horse riding, camps, trips to Healesville Sanctuary and many more.

For further information please contact Youth Group Coordinator Kristin Jones on 836 9811.

Neighbourhood Mediation



People who live next door to each other or who live in the same neighbourhood, sometimes find that a problem arises because of differences in lifestyle and culture. If you have a problem with a neighbour which you are finding difficult to resolve, the Dispute Settlement Centre is a community service which can help.

The Windsor Dispute Settlement Centre is one of seven centres, funded by the Attorney-General's Department of Victoria, designed to help people settle their disputes in a co-operative and lasting way.

The Centre has carefully selected and skilled mediators who will meet with you and your neighbour so that both sides have an opportunity to explain what the problem is about.

Neighbourhood mediation is strictly confidential. The service is completely free and is available

during the day, evenings or on the weekend.

Mediators do not take sides, decide who is right or wrong, or tell people what to do. Instead they encourage both parties to put forward suggestions to solve the problem, so that a satisfactory result is achieved by mutual agreement.

This process of negotiation helps ensure that an agreement is reached which both you and your neighbour can live with. The Dispute Settlement Centres have found that 85% of mediations reach agreement without resorting to formal legal channels.

People who work together, belong to the same club or organisation, or who share the same house can also benefit from the services provided by the Centre.

The Windsor Dispute Settlement Centre is located at 109 Wellington Street, Windsor, phone 525 2949. There is also a Centre in Preston at 430 High Street, phone 470 6344.

Holiday Activities



Join in the fun this summer with the Kew Holiday Program. Help feed the animals at the Collingwood Childrens Farm, visit the Healesville Sanctuary, join in the fun and activities with the Yarra Bend Ranger, or take part in a rock pool expedition with a marine biologist.

Organised by Council for children aged five to twelve years, the program operates from 8.00am to 6.00pm, Monday to Friday, from 4 — 25 January at the Kew Primary School in Peel Street.

All places and excursions on the program must be booked and paid

for on the Enrolment Nights before the commencement of the program. No enrolments will be taken while the program is in operation.

Enrolment Nights: 6.00pm -7.30pm on Tuesday 15 & Wednesday 16 December at Kew Primary School. Fees for up to 4 hours are \$8.50 (or \$6.50 for more than one

child). For more than 4 hours are \$13.50 (or \$11.00 for more than one child). 50% concession with Health Card for FEES only. Excursions are an additional cost.

For more information please contact Pierrett Boustany at Council's Community Services Department on 854 5220.



TEENAGE HOLIDAY PROGRAM JANUARY - 1993

The Cities of Kew and Hawthorn are once again jointly organizing a number of day activities during the school holidays for 11 to 15 year olds.

Some of the trips include a day at the beach, horse riding

and trips into the city for movies and McDonalds. The program is well supervised by experienced workers.

For more details or to book your place please call 810 2464. Bookings fill fast so call early to secure your place.

PAGES

Bookshop

Specialising in Children's Books

196 High St Kew Victoria

Australia 3101

Tel: (03) 853 5829

*Open until 5pm
on Saturdays
during December.*



**Good books make
enduring gifts.**

KEW PHOTO SHOP



**HAPPY
CHRISTMAS
SPECIALS**

20% OFF FRAMES & ENLARGEMENTS

10% OFF CAMERAS

10% OFF ALBUMS

183 High Street (cnr Walpole Street) Kew. Phone: 853 5964