

# KEWRIOSITY

OCTOBER 1992

City of Kew, Municipal Offices, Charles Street, Kew 3101. Telephone: 853 2466

## ASTHMA — A MATTER OF 'LIFE AND BREATH'

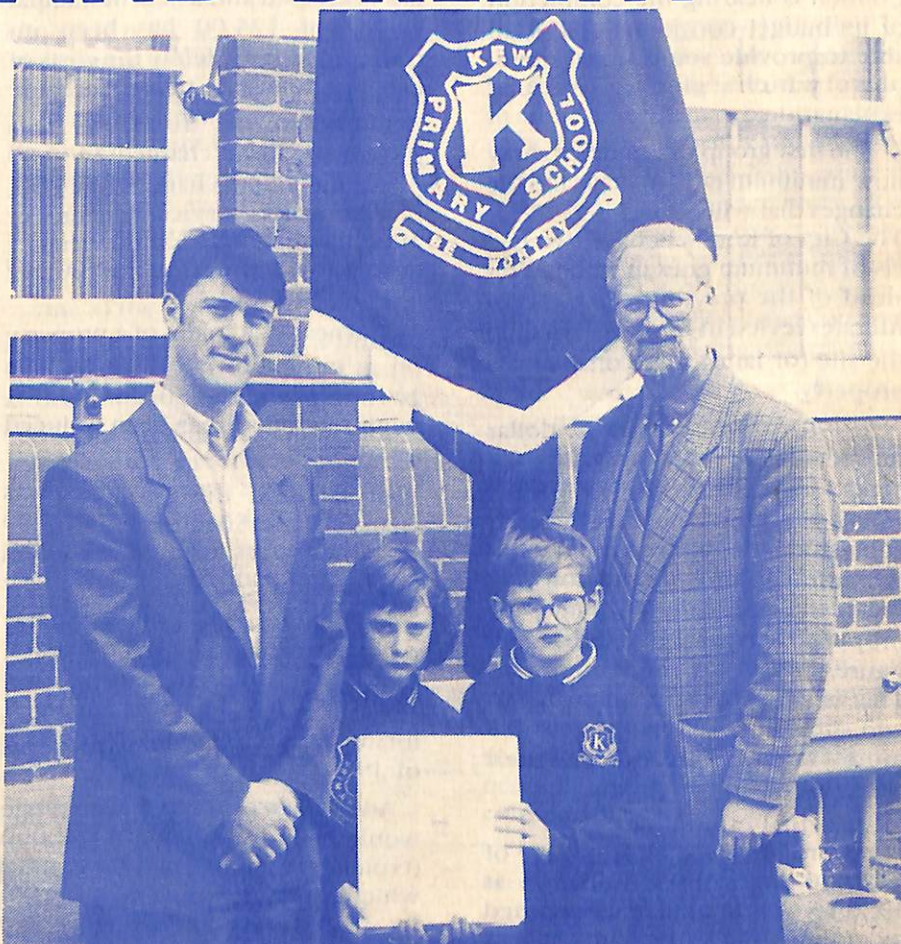
Almost everyone knows somebody who has asthma, but how many of us really know how to help someone who is having an asthma attack?

Recent research into the prevalence of asthma indicates that it is a very common condition. In Victoria alone it is estimated that nearly 500,000 people are affected by asthma; that is, one in four school-aged children and one in ten adults suffer from the disease. Asthma is responsible for over 10,000 of the state's hospital admissions each year and unfortunately it is also the primary cause of four to five deaths every week.

The Asthma Foundation of Victoria is an educational and advisory centre which exists to help people overcome the burdens of asthma. Located in Kew for over 25 years, the Foundation provides an invaluable complement to medical treatment in helping asthmatics properly manage and control their condition.

In Kew, a City well known for its many schools, increasing community recognition of asthma is an important and ongoing process. With an estimated 1,500 students in the municipality suffering from asthma, the work of the Foundation has a special significance for Kew families.

The Foundation has targeted school teachers, particularly at the primary level, as a group which requires specific education about the management of asthma. As part of this process, the Foundation has developed a 'Breathe Easy' Teacher In-



*Asthma Foundation Education Officer, Darren Birch presents a 'Breathe Easy' kit to Kew Primary School students and Principal, Rod Albury. The kits are a statewide initiative involving all school systems.*

Service Kit to assist teachers in the management and emergency treatment of pupils with asthma.

Launched in mid-October as part of Asthma Week, the kit is the basis of an educational program conducted in the schools by a teacher and a health professional from the local community. An eight minute teacher training video forms an in-

tegral part of the kit. Produced with the involvement of students from the Kew Primary School, the video alerts viewers to the signs and symptoms of asthma and explains how to treat an asthma attack.

For more information about asthma and the kit, contact The Asthma Foundation of Victoria on 853 5666.



## 1992/93 RATES AND CHARGES

In last month's column, I explained how the combination of the general revaluation of all properties in the municipality together with the statutory requirement for Council to phase out minimum rates by 1996, will have a wide and varied effect on what each ratepayer pays in rates and charges in 1992/93.

That column generated a lot of discussion and requests for some additional explanation as to how the effects actually occur. Now that Council is nearing the completion of its budget considerations, I am able to provide some actual examples which give a clearer explanation.

The first group of examples show how minimum rates operate and the changes that will occur for 1992/93. The City of Kew will have two levels of minimum rates in 1992/93 instead of the previous three levels. All rates levied in Kew are based on the site (or land) value only of the property.

In 1991/92, the rate in the dollar on site value of property was 0.7415 cents. That is, the property's site value multiplied by 0.7415 cents equals the rate that was charged. If the result of the calculation was lower than the minimum rate, the property was charged the higher figure, being the minimum rate. That is, all properties below a certain site value, are charged a minimum rate, regardless of their valuation.

An actual example is :  
For a property with a site value of \$40,000 in 1991/92 (valuation at 1986 levels) the rate is determined by multiplying the \$40,000 x 0.7415 cents = \$296.60. The 'minimum rate A' in 1991/92 was \$507.50 therefore the property was charged \$507.50, plus a waste services charge of \$103.80 totalling \$611.30.

For 1992/93, the same property has a site value of \$68,000. For 1992/93 the 'minimum rate A' is \$450.00 and the rate in the dollar is 0.4491 cents.

Therefore the amount due would be \$68,000 x 0.4491 cents =

\$305.39, however because the minimum rate A is \$450.00 that is the rate charged. In addition, the waste services charge for 1992/93 has decreased and a new municipal charge of \$25.00 has been introduced to help defray the costs of the minimum rate phase out.

Therefore in 1992/93, this property will be charged \$450.00 plus a municipal charge of \$25.00, plus a waste services charge of \$96.80, totalling \$571.80 being a decrease of 6.8% from the 1991/92 level.

The next example is of a property on a 'minimum rate B', which in 1991/92 was \$452.50. In 1992/93 minimum rate B has been reduced to \$325.00.

In 1991/92, this property was charged \$452.50 rates and \$103.80 waste services charge, totalling \$556.30.

In 1992/93, the same property will be charged \$325.00 rates, \$25.00 municipal charge and \$96.80 waste services charges, totalling \$446.80 being a decrease of 19.7%.

An average property in this range would have a site value of \$32,000 (typically a single bedroom unit) which if a minimum rate did not exist, would have been due to pay \$143.71 in rates.

In some cases, the difference between the actual rate calculation and the level of the minimum rate is quite significant.

The second group of examples is again for actual properties and shows the effects of the general revaluation on the rates for those properties.

A commercial property valued at \$292,850 at 1986 levels, has now



*Chief Executive, Malcolm Hutchinson*

returned a valuation of \$350,600 at 1990 levels (which are used for calculating the 1992/93 rates). Therefore the site value has increased by 19.7% over the four year period.

The rates in 1991/92 were \$292,850 x 0.7415 cents in the dollar, totalling \$2,171.48.

The rates for 1992/93 will be \$350,600 x 0.4491 cents, being \$1,574.54, plus a municipal charge of \$25.00 totalling \$1,599.54. This results in a 26.3% decrease.

In another example, a residential property valued at \$99,500 site value at 1986 levels has now returned a valuation of \$204,500 at 1990 levels. A 105.6% increase in site value over the four year period.

The rates in 1991/92 with a waste services charge was \$841.59 but in 1992/93, with a municipal charge and waste services charge, will be \$1,040.21. This results in a 23.6% increase in rates and charges.

Most properties fall within this band (26% decrease to 24% increase). Of the City's 11,584 rateable properties, 4,500 properties will receive a decrease and the remainder will incur an increase. In general, it is the commercial and industrial properties receiving the decrease and residential properties incurring the increase. As previously noted however, this is not the case for those residential properties which are rated on minimum rates.

**Continued page 3**



## MAYOR'S COMMENT

During October, the new rate for the 1992/93 year will be struck by Council. This follows a long and detailed examination of all our existing services and commitments, by both Staff and Councillors. The anticipated increase of 3.69% represents the absolute minimum that is required to provide for the continued delivery of quality services, and also provide appropriate provisions and reserves for the future.

The provision of future reserves is always an area for debate, but it is the present Council's policy that adequate provision for future maintenance of assets and emergencies is part of good financial management. Our current financial position is strong, and these policies can be revised during the budget process each year. The Council's priority is to establish a rate level that is sustainable longer term, without the need for large fluctuations that have happened in previous years.

For some, the striking of the new rate together with the new property valuations, may lead to some concern that a double loading has been imposed. The revaluation of properties occurs every four years as a statutory requirement. Unfortunately, the four year cycle spans the period 1986, the date of the last valuation, to 1990. This was a time of volatile property valuations, and some residential properties will reflect the very buoyant values of 1990.

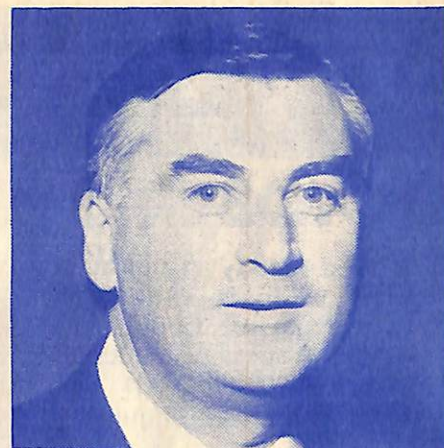
The valuation period is not an option chosen by Council, and it comes at a time of great hardship

for many of our residents. The Council will do all it can to provide advice to those residents who face special hardship at this time.

The revaluation also comes at a time when the minimum rate policy is being phased out. This minimum rate will be partly replaced with a municipal charge, but in the short term there will be a decrease in some property rates this year. We will continue to closely monitor this transition in order to identify the anomalies.

One of the committees chaired by the Mayor, is the Forward Planning Committee. This committee looks at the longer term impact of policies and commitments to Council. Typical of these policies was the development of the Corporate Plan. Other matters that are considered include the long term financial impact of future capital works and new services.

Because of our desire to balance the cost of providing quality services to the community as well as minimizing rate increases, the Forward Planning Committee will commence a close examination of



*Mayor of Kew, Cr Roger Streeton*

the services currently provided in order to assess the most appropriate forms of funding in the future. In some cases, it may be found that some services currently provided by Council, and funded from general rates, may need to have more of a user pays or private enterprise option. This review is part of our ongoing search for continuous improvement to service provision and response to changing community needs.

In closing, may I remind everyone that Kew Council supports a number of outstanding local recreational facilities including the Recreation Centre, lawn bowls and croquet, and a central library. Information about these first rate facilities is available in the Community Services Directory, or I invite you to contact the Executive Officer Parks and Recreation for more details. The success of these facilities is very dependent on the support of our Kew community.

## CHIEF EXECUTIVE'S COMMENT

*Continued from page 2*

The City of Kew is not alone in having this type of result from the general revaluation carried out through the metropolitan area. Information obtained from other municipalities, show that some metropolitan ratepayers will receive increases of up to 40% resulting from property value changes. The reason that Kew is not affected to this extent, is the smaller number of commercial and industrial properties in this municipality. These

types of properties experienced the least growth in valuation over the four year valuation period.

The revaluation of all properties in the metropolitan area is a statutory requirement. These examples show the dramatic changes which will occur to the level of rating for individual properties, despite Council minimising its rates and charges increase to 3.69% for 1992/93. It is a result which is common to all metropolitan municipalities

brought about by property market forces over that four year period, although this is small comfort to those ratepayers who will experience increased costs.

**John Stanley**  
has moved his  
physiotherapy practice  
from the  
Cotham Private Hospital  
to 1181 Burke Road,  
Kew 3101  
(near Sackville Street).  
Phone 817 2898 unchanged.



# DIARY DATES

## OCTOBER

**21 Wednesday 11.00am, Kew Legacy Widows Club.** Shirley Ramsey, from the Council of the Ageing, will speak at the RSL Hall, 63 Cotham Road. All Legacy widows welcome. Enquires 853 7049.

**22 Support Group For Women With Bi-Sexual Partners.** A new group is forming. You are not alone. Meet others and become part of a support network. Contact Linda on 853 6614.

**23 Friday 5.00-9.00pm, and Saturday 10.00am-4.00pm, Book Fair.** Thousands of pre-loved (and some new) books on sale in the Parish Hall, Holy Trinity Anglican Church, corner High and Pakington Streets.

**24 Saturday 9.00am-1.00pm, St Paul's Strawberry Fair,** corner Hale Street and Windella Avenue, East Kew. Stalls include, gourmet foods and produce, cakes, handicrafts, plants, books, trash and treasure, and plenty of fun and activities for the kids.

**9.30am-1.30pm, Royal Victorian Eye and Ear Hospital Kew Auxiliary 'Mini-Fete',** 159 Peel Street, Kew. Stop by for a Devonshire tea. Also a white elephant sale, books and plants, cakes, Christmas cards and gifts.

**12.00 noon — 4.00pm, Hospital Open Day.** Parents and kids of any age are welcome to participate in a free pet checkup by a Vetcall vet, and a guided tour of the hospital. At 3.00pm there will be a demonstration by Basil Theofanides from the Command Dog Training School. Where: Car park at the rear of Vetcall, 1 Victoria Road, East Hawthorn. Please call 882 0007 for further details.

**8.15 pm, The Camberwell Music Society** will present a concert by the young and highly ac-

claimed Team of Pianists on 24 October. The programme focuses on compositions in the Romantic tradition by Beethoven, Schubert, Mendelssohn, Chopin, Liszt, Faure and Rachmaninoff. Tickets are available at the door, St. John's Hall, 552 Burke Road, Camberwell Junction, \$15 for adults and \$10 concession.

**25 Sunday 2.00pm, Kew Adult Training Support Services.** The Gaiety Theatre Group will provide entertainment for the Training Services' first fundraising concert, being held in the Senior Citizens Hall, 533 High Street, Kew. Afternoon tea will be served. Admission is \$15, and tickets are being sold prior to the concert. For bookings please phone 853 3249 or 824 7026.

**26 Monday 1.30pm, Country Women's Association — Fraser Group.** The Association will present a Music & Drama Get-Together at the Uniting Church Hall, corner Hyslop Street and Warigal Road, Burwood. B.Y.O. Lunch. Tea & coffee provided. Come and enjoy yourselves. Admission \$2.50.

**1.30pm, Kew Garden Club.** A daytime meeting will be held in Hall 3 of the Kew Library complex. Enquiries 859 2977. New members most welcome.

## NOVEMBER

**2 Monday, 12.30pm, Country Women's Association.** The Kew-Balwyn Branch is holding their An-

nual General Meeting in the Uniting Church Hall, 142 Normanby Road, East Kew.

**7 Saturday, 7.00pm-12.00am, Monnington Centre Parents & Friends proudly present The Inaugural Monnington Rock and Roll Ball** at the PRESTON TOWN HALL cnr Gower & High Streets, Preston. TICKETS: \$35.00 per head includes 3-course meal & drinks. All profits will benefit children at Monnington Centre. Monnington is a statewide service for young deaf & partially hearing children. Enquiries: 816 9322

**12 Thursday 7.30pm, Kew Festival Committee Meeting.** Next year's Festival will be focusing on Kew's largest 'industry', education. Anyone who can spare a little time, and would like to contribute some ideas about the celebrations would be warmly welcomed by the Committee. Monthly Committee Meetings are held every second Thursday of the month at 7.30pm in the Municipal Offices, Charles Street.

**Kew Garden Club.** Members and new members, come and learn about rhododendrons and azaleas at the Senior Citizens Centre, High Street, Kew. Enquiries 853 7057.

**14 Saturday 8.15pm, Camberwell Music Society** presents 'A Pilgrim's Delight' at St John's, 552 Burke Road, Camberwell Junction.

**18 Wednesday, 10.30am, Kew Arthritis Self Help Group.** The group is holding their Christmas Break-up in Hall 3 at the Kew Civic Centre. All are welcome.

## COUNCIL MEETING DATES

Tuesday 20 October	7.30 pm	Review Committee/ COUNCIL	8.15pm
Tuesday 10 November	7.30pm	Operations/Planning & Development Committees	
Tuesday 17 November	7.30pm	General Purposes Committee	

Meetings are held in the Committee Rooms and Council Chambers at the Municipal Offices. Entrance is via the main portico off Cotham Road.

All these meetings are open to the public. Copies of the agendas are available for inspection at the loans desk of the Kew Library.



# A QUIET CRISIS

Everyone experiences different problems during their life, and everyone responds to them in their own individual way. Most people face a crisis of varying degrees when someone close to them has died, after losing a job, or after a relationship ends and sometimes such problems trigger a change in a person's mental health.

About one in every five Australians — or more than three million people — suffer from a mental illness severe enough to significantly affect their lives.

The Hawthorn Community Mental Health Centre provides assessment treatment and help for people with serious mental health problems. The Centre is a free and confidential service, funded by the Health Department to provide community-based mental health services for residents and agencies within the cities of Kew, Camberwell and Hawthorn.

The Centre and its staff work in conjunction with other local agencies and groups to provide a comprehensive range of psychiatric and psychological services which include:

- Psychiatric assessment, treatment and management
- Crisis counselling
- Individual, couple and family therapy
- Occupational therapy and activities
- Home visits
- Medication, where appropriate
- Parent and community education about psychiatric illness

If you would like to discuss a mental health problem with one of the Health Centre's professional staff, call the Centre between 9.00am and 5.00pm, Monday to Friday on 882 9299.

# Be Wise With Medicines Poster Competition

During September, Grade Six students in Kew participated in an education program conducted by the City of Kew Health Section. Council's Health Surveyors visited local schools to talk to the students about safety with medicines and using medications wisely.

To convey the important safety messages to other school children, the Grade Six students designed a series of colourful posters which are on display at the Kew Library and the Kew Recreation Centre during October.

Choosing the prize winners for the best posters and caption was a difficult task, and judging by the high standard of entries, there is some outstanding creative talent in Kew schools!

Congratulations to all the students on their fabulous artistic talent and imaginative captions.



*Gerald Frederic, 1st prize winner from Xavier, with Council's Director of Community Services, Janet Dore.*

*Keep dangerous medicines out of reach,  
by taking only one of each.*

*Be sure to lock your first aid door,  
and keep it well above the floor.*

*This is our message, store it in your head,  
and then you'll be grateful that you're not dead.*

Josephine, Marlene and Greer, Grade Six students from Genazzano College, created a special message to remind people about using medicines safely.

## KEWRIOSITY DEADLINES

*Kewriosity* is a community newspaper which welcomes contributions from residents and local community groups. Items for the **November edition** must be submitted to the Editor, Katina Brighton, City of Kew, Municipal Offices, Charles Street Kew, 3101, **before 26 October 1992**. Items for the **December edition** must be submitted **before 20 November 1992**.



## IN BRIEF

### KEW EAST PRIMARY SCHOOL MUSICAL



Kew East Primary School is staging a production of the musical fantasy 'Dragon Girl' as part of its centennial celebrations. With a cast of 130 drawn from all grade levels of the school, and the support of many parents and teachers, 'Dragon Girl', follows in the tradition of being an event for the whole community.

Annalisa is the Dragon Girl, a heroine who must overcome her fears and confront the ferocious Dragon and the evil that is afoot in the Kingdom of Begonia.

Can she save the Kingdom from its terrible fate?

Discover for yourself at the Kew High School Community Theatre on 29, 30 & 31 October at 7.30pm. Tickets are \$8 for adults and \$4.00 for children and are available from Kew East Primary School. Phone: 859 2903.

### Advertising

Advertising in *Kewriosity* is an effective and inexpensive way for local traders to keep the community informed about the services they provide.

Call the Editor, Katina Brighton, on 854 5204 for details about the paper's competitive advertising rates.

No endorsement of services advertised is implied by the City of Kew.

### CHINESE ACADEMY OPENS IN KEW

The Kew Chinese Academy is a new school run by fully qualified teachers from Taiwan, Beijing and universities throughout Australia. Situated in the premises of the Kew High School, the Academy offers exciting courses in the Chinese language, culture, fine arts, dance, Tai Chi and many other activities, every Saturday morning from 9.30am to 12.30pm. The courses are open to Australian and Chinese people of all ages (prep to adult) and the Academy intends to expand its course offerings as enrolments increase.

Courses cost approximately \$30.00 per term, and enrolments are now open. For more information please contact Mr Kam Ip Ng or Mr Alan Taylor on 859 8652.

### KEW BOWLING CLUB

The 1992/93 bowling season was officially opened by the Mayor Cr Roger Streeton on the 5th of September.

The Mayor congratulated the Club on its very successful 1991/92 season, during which it won pennant flags in Division 3 and Division 7.

This season the Club has entered five men's and two ladies sides in the pennant and there will be plenty of social games during the season.

If you are interested in joining the Kew Bowling Club ring Saul Spielman on 853 9650 or come down to the Club at 14 Wellington Street.

## BETA BEING

SPECIALISTS IN:

**SWIMWEAR AEROBICS GEAR  
TRACKSUITS TENNIS WEAR  
SHORTS BODYWEAR  
SHOES**

**Great Gear for all age groups  
246 HIGH STREET KEW  
— 853 5482  
OPEN ALL DAY SATURDAY**

### KEW YOUTH BAND

Congratulations to the Kew Youth Band on winning the State Youth Band Title at the annual concert in August. Under the direction of Musical Director Gary Bishop, the forty strong band has improved immeasurably since competing for the title for the first time last year.

The band intends to keep busy for the remainder of the year performing at local functions and providing entertainment in the wider community.

### KEW CROQUET CLUB

The Kew Croquet Club is starting up a croquet day for mothers with young children. Enjoy a game in the sun while members take turns to baby sit at the club house. There is a safe area for children to play and everyone interested is welcome. The Croquet Club is situated at the High Street entrance to Victoria Park. For more details please ring Connie Perry on 817 3950.

### INSTRUMENTAL GROUP

A singer wants to meet other retired and semi-retired musicians who are interested in starting a small instrumental group. If you play the piano, guitar, violin, accordion or another instrument, please contact Otto Nechwatal on 853 7897.

**Monnington Centre  
for Deaf  
and Partially  
Hearing Children**



Monnington Centre

#### RAFFLE

1st Prize: Personal Computer 125 Mb hard disk, 15" colour monitor, internal CD from Multimedia	VALUE: \$6,434
2nd Prize: NEC 68cm Stereo Colour TV Stand & Remote Control	VALUE: \$2,350
3rd Prize: NEC Video Recorder (VH90) Remote Control	VALUE: \$899
4th Prize: NEC Microwave Oven	VALUE: \$349
5th Prize: NEC Portable CD/Radio/Cassette Player	VALUE: \$299

Held in conjunction with the Parents and Friends of Monnington Centre. 30,000 tickets to be sold from August 15, 1992, to November 7, 1992. Winners drawn on Tuesday, November 10. Raffles and Bingo Permit No. C106792.



## BEST OF LUCK LISA!

Lisa Gaffney, the Council's vivacious Public Relations Officer has received an offer she couldn't refuse — to marry the man of her dreams!

Congratulations to both Lisa and Trenton Breeze who were married at a beautiful ceremony at Genazano College on the 18th of September.

The sad news for us is that Lisa has moved to join her husband in Sydney. Everyone who worked with Lisa was sorry to see her leave, and she will be greatly missed by all her friends in the Council and local community.

Lisa was the driving force behind *Kewriosity* and many other community events. A great motivator, Lisa focused much energy on encouraging the community's involvement with *Kewriosity* and making it a newsletter for everyone to enjoy.

Many people in the community met Lisa and will join with us in wishing her every happiness in the future.

## HELLO TO A NEW FACE



**Katina Brighton, Council's Public Relations Officer.**

## New Carry Bags For The Library



**The Mayor of Kew Cr Roger Streeton, with Eric Flynn from Friends of Kew Library and Library Officer Vera Di Campli San Vito.**

**Gone could be the days struggling home from the library with an arm full of books. Thanks to the Friends of Kew Library, the library now has new carry bags to help ease your load.**

The bags are available in two sizes — \$6.00 with a hand grip or \$7.00 for a slightly larger bag with a shoulder strap. Both bags are made of quality calico with a draw-string top and make an ideal multi-purpose carrier.

For the past six years, the *Friends*

of Kew Library have been raising money for the library and promoting an interest in its services. The group is responsible for many generous donations and is presently working toward a CD-ROM for the reference section.

Most of the money raised by the *Friends of Kew Library* comes from the monthly book sales which are held in the library foyer on the third Sunday of each month. If you are interested in helping with these sales or in joining the group, contact Mr Eric Flynn on 859 6415.

**There is a new face at the City of Kew. Katina Brighton has joined Council as its Public Relations Officer, following Lisa Gaffney's resignation. Katina has commenced duties and is looking forward to working actively within the community.**

After completing a Bachelor of Arts, in which she majored in public relations and journalism, Katina went on to gain experience in the private sector. She is now eager to apply these skills to the local community by enhancing the commu-

nity's contact with its local government.

As editor of *Kewriosity*, Katina will continue to strengthen the newsletter's role as a forum for local residents and community groups. She welcomes all suggestions about *Kewriosity's* content, style and direction.

We hope you enjoyed this issue and if you have any items which you think other *Kewriosity* readers would like to know about, please let Katina know. Write to: Katina Brighton, *Kewriosity* Editor, Municipal Offices, Charles Street, Kew 3101.



# COUNCIL NEWS

## BARKERS ROAD CUTTING

The east bound, kerbside lane of the Barkers Road Cutting has been closed for repairs between Victoria Street bridge and Findon Crescent. Barriers blocking the lane were put in place in late September after rocks dislodged by heavy rain fell onto a section of the road.

Temporary works have been carried out to ensure the cutting's safety and these immediate repairs should allow the lane to be opened shortly.

VicRoads geotechnical division is assessing design options for repairs to the remainder of the cutting and more extensive repairs may mean the lane needs to be closed again between now and Christmas.

## HARD RUBBISH COLLECTION

A hard rubbish collection for Kew residents will take place between Wednesday 4 November and Tuesday 17 November 1992.

All materials must be placed on the nature strip by 6.00am on the designated date of collection. A notice giving the exact date of collection for your area, and the type of rubbish which will be collected, will be placed in your letterbox one week before collection day.

For further information ring Kew Council's Depot on 853 5148.

## HOW MANY VEGIES SHOULD YOU EAT?



### WHY EAT MORE VEGETABLES ?

They are a good source of vitamins, minerals and fibre

They are low in fat, kilojoules and sodium

They play an important role in promoting health and protecting against disease

### SERVING SIZES



## FREE FRUIT 'N' VEG KIT

Health authorities recommend people eat at least two pieces of fruit and five serves of vegetables every day. To encourage the community to increase their daily intake of fruit and vegetables, the Council's Health Office has free Fruit 'n' Veg Kits available.

Anyone interested in finding new ways to include more fruit and vegetables in their diet can obtain a kit by contacting the Council's Health Office on 854 4245.



## A LASTING FAMILY HEIRLOOM

Charming Christmas Nativity Figures Woodcarved in Tirol. 3 pieces \$160 12cm. Additional figures available. Also larger sizes.

Phone: 853 7898

OTTO COMPOJST ST. ULRICH



## Toddler HELP YOUR Kindy CHILD BOUND Gymbaroo INTO LEARNING

at WEEKLY ¾ hr. sessions  
PROFESSIONAL GUIDANCE

**LOTS OF FUN**

For under 7's to school age

**EAST KEW CENTRE**

Uniting Church Hall, Normanby Road

Tuesday — Thursday — Friday

Phone: 836 4243

**GYMBAROO also offers**

Limited places in AFTER SCHOOL SESSIONS  
SCHOOL AGE CHILDREN TO GRADE 2  
PERCEPTUAL MOTOR PROGRAMS