

KEWRIOSITY

JUNE 1992

City of Kew, Municipal Offices, Charles Street, Kew 3101. Telephone: 862 2466



Mountain Bikes for Kew Police

The Lions Club of Kew recently purchased two mountain bikes for the local police. Mountain bikes are widely used by European police and should prove very handy for our own Kew police, especially around the Yarra Boulevard.

Senior Sergeant Rob Hardie is pictured with Constable King and Mr John Britcliffe, from Kew Lions.

KEW JUNCTION COMMERCIAL AREA URBAN DESIGN OPTIONS — PRECINCTS 1 & 2

The Commercial Areas Strategy Committee has recently been considering Urban Design Concepts for some areas of the Kew Junction Commercial Centre. The work has been undertaken by local consultants Ken Blair, of Interlandi Blair & O'Connor Pty Ltd and Ken Wallace, of Patrick Wallace Pty Ltd as part of the Kew Junction Strategy implementation.

The Committee is working closely with the Kew Business Association on the project. The concepts include paving, street furniture, road widening and tree planting.

Further consideration is being given to whether the concepts can be extended throughout the centre.

The proposed concepts are available for inspection at the Municipal Offices, the Municipal Library and at several businesses within the Kew Junction Commercial Centre.

If you have any queries or would like more information about the Urban Design Concepts please contact

Caroline Rollis — Strategic Planner
on 854 5271 or

Stephen Wagen — President, Kew
Business Association on 853 7744.



Responsible Dog Ownership

This month, you will receive a pamphlet on 'Responsible Dog Ownership'. If you have a dog please read it and make sure your dog is currently registered. The brochure was prepared by Kew Council's Health Section and it's packed with information on how best to care for your dog.

There is information on grooming, worming, vaccination, obedience, exercise, diet, desexing, boarding and who to contact if you lose your beloved pet. There is also important information on the fines which you may have to pay if your dog roams around the streets, attacks people or is not registered with Council.

If you love your dog then you will want to take the best care. Please call 854 5213 for further information.

WASTE MANAGEMENT STRATEGY

(This month, the Mayor and the Chief Executive have combined to present a column on Council's Waste Management Strategy proposal.)

Last month, the Mayor forwarded to all Kew residents and ratepayers a letter and questionnaire on the Waste Management Strategy.

A number of people have responded to this letter and provided very constructive comments and suggestions. In considering the strategy implementation, Council will use these suggestions as the basis for formulating the final product.

In this column, we wish to provide some comments on some of the most frequently raised questions as a basis for providing some information about what would appear to be the most common questions being asked in the community. These are:

Question 1: *Can the recycling component of the strategy be implemented first?*

Comment: The recycling component, being the distribution of the recycling crates, should be implemented as the first stage of the Waste Management Strategy. In this way, residents may develop the habit of using recycling as the first alternative in the disposal of waste.

Question 2: *Why is there an extra charge of \$100 per annum for a 240 litre mobile bin?*

Comment: This has been the most regular point raised by residents but conversely, a point praised by other residents.

There are two reasons why it is proposed to impose an additional charge for a 240 litre bin. The first is that there are additional costs required for collection and disposal of the additional waste which can be disposed within a 240 litre bin. If all properties had a 240 litre mobile bin, either more or larger trucks would need to be purchased to accommodate the additional waste, or more frequent trips would be required to the Whittlesea Tip to dump the rubbish, or a larger labour



Mayor of Kew, Cr Daryl Oldaker.

force would be required to undertake the additional work.

The other additional cost is for the actual dumping of the waste. Council, and subsequently the ratepayers of Kew, are charged for the volume of waste disposed. Therefore if some residents wish to dispose of more waste, then the cost of disposal of that waste should be borne by the producers of that waste. This is in line with normal user pays principles.

The second reason is that to discourage property owners from producing waste, the level of charge for a 250 litre bin has to be sufficient to make the decision to use a bin of that size a carefully considered decision.

Question 3: *Is there a need for recycling crates given the cost required for provision, possible theft and possible litter from the crates?*

Comment: Research both within Australia and overseas has proven that the use of "solid receptacles" for recycling greatly increases the participation rate in recycling programs. The possible theft of the crates is a concern but would exist regardless of the system used. The only litter emanating from the crates would be from untied papers

and in this regard, the existing requirement to tie or weigh down papers will continue.

Question 4: *Why have free tipping vouchers been excluded from the proposal?*

Comment: The first point that should be made is that the tipping vouchers have never been "free". Council, and subsequently ratepayers, have had to pay the City of Heidelberg for each tipping voucher used. Within the current waste services charge, 6.1% of the charge is used to pay for these vouchers. Again the principle of user pays is relevant. Under the current arrangement, all ratepayers contribute to the cost incurred by those ratepayers who use the transfer station.

Secondly, the Heidelberg Transfer Station is effectively a private facility provided by the City of Heidelberg and thus Kew Council can only use the facility with that City's approval. Such use may or may not be available for Kew Council in the future. That is, even although the facility may be available for Kew residents in a private capacity, it may not be available for Kew Council sponsored use.

Question 5: *Why are 120 litre mobile bins being provided as the standard issue when most other Councils provide 240 litre bins as standard use?*

Comment: In conducting the research required to formulate the Waste Management Strategy, Council has ascertained that with few exceptions, the 120 litre bin will provide ample service for all residents in conjunction with the other services being provided. Throughout Australia, Councils which have previously provided 240 litre mobile bins are now either considering or implementing changes to reduce the size to 120 litres. The most recent example of this change is with the City of Knox which has withdrawn all of its 240 litre bins for

domestic waste disposal and replaced that bin with a 120 litre bin with no alternative to that size being offered.

In addition, almost without exception, Councils throughout Australia introducing mobile bins are using the 120 litre size bins as the standard bin being issued.

The State Government has expressed its intention to require all councils, and subsequently all residents, to halve the amount of waste disposed by the year 2000, which is a further reason why other councils are attempting to replace their 240 litre bins with 120 litre bins. With this in mind, it would be irresponsible of the City of Kew to provide 240 litre bins as the standard issue.

It should also be noted that some of the respondents to the questionnaire have stated that they believe that even the 120 litre bin is too large and that the issue of such sized

bins will only encourage irresponsible waste disposal.

Obviously numerous other comments have been made and questions raised by respondents to Council's letter and questionnaire. It should be particularly noted that Council values the responses it has had from its residents and many important points have been raised and constructive suggestions made which will need to be included in Council's further consideration of the Waste Management Strategy.

One last point which requires a comment, is the Mayor's advice in the letter that wherever no response has been received from the letter and questionnaire, that the resident will be assumed as being in favour of the proposed changes. This approach has been taken for two reasons. First to attempt to ensure that anyone with a point of view about the proposal is prompted to respond. Council has found that unless such a prompt is provided, peo-

ple often do not make the effort to let Council know about their thoughts but are aggrieved when the proposal is implemented.

Second, it is Council's view that its residents should be informed of the types of assumptions that may be included when making an assessment of the responses received and the relevance of those responses in terms of the total community's view.

Council has taken great effort to ensure that all people who may have any interest in the proposal have been informed by personal letter. As a consequence, it is Council's belief that the inclusion of the no responses as an in favour response holds greater relevance.

It is hoped that the result of Council's considerations on the Waste Management Strategy can be advised within the next few months.

Home Care for Kew Residents

Kew's home care service began in 1943, as a voluntary service, to assist families of overseas servicemen. In 1945 it became a Council service called 'Home Help Service', today it is known as the 'Home Care Service'. It is available to the elderly or frail people living at home and the families or guardians of people with children who have a disability.

Specific Home Care is provided to assist and give respite to parents and guardians caring for a dependent child with an intellectual, physical or sensory disability. This service is available daytime, evening and at weekends.

Respite Care is another service provided on a sessional basis, up to four hours a week. Carers of frail older people and people with disabilities may use this service which enables them to enjoy outside activities, knowing the person they care for is being looked after.

Personal Care is also offered where the client's health is stable and the tasks do not require the skills of a qualified nurse. Some of these tasks include assistance with showering, sponging, dressing and undressing.

Referrals are accepted from the client, family, neighbours and general practitioners.

Assessment is made of a potential client's needs so that appropriate services are offered.

The unsung heroes of these services are the Home Carers who are mature women and men, interested in people and working in a home situation. They are employed by the City of Kew and work under the direction of the Home Care Supervisor, Greta Grutzner.

Home Care staff partake in orientation and training programs. Many of the Home Carers have been with Council for over ten years and recently long-time employee, Mary

Flanagan celebrated 20 years of service.

Greta Grutzner said, 'The residents of Kew and Kew Council are fortunate to have such dedicated staff, each of whom brings something different to the service and when it's all mixed together we have a service to be proud of.' If you would like to know more about Home Care please call Greta on 854 5222.

NEW! NEW! NEW!

**Cafe
Angelica**



**234 High Street Kew
Ph. 853 6587**

**Fresh Treats and Specializing in
Vegetarian cooking.
Eat-In or Take Home**

Opening Special:

Cappuccino & Muffin \$1.50

DIARY DATES FOR JUNE/JULY

20 (Saturday) 8.15pm Camberwell Music Society. A night of Gilbert and Sullivan at St. John's Hall, 552 Burke Road, Camberwell Junction. Tickets available at the door for \$15, or concession \$10, enquiries 822 3156.

22 (Monday) 10am-2.30pm The Country Women's Assoc., Kew/Balwyn Branch. Craft and BYO Lunch at the Uniting Church, 142 Normanby Road, East Kew.

1.15pm Kew Daytime Garden Club. Meeting at No.3 Hall in Library Complex, Kew. New Members most welcome. Enquiries, 859 2977.

25 (Thursday) 7.30pm Commercial Areas Strategy Committee Meeting. In the Committee Rooms, first floor of the Municipal Offices, Charles Street, Kew.

27 (Saturday) 10.00am to 3pm St Hilary's Church Fete. All proceeds to aid the sister church in El Salvador. Everyone welcome to this family fun day at 12 John Street, Kew. Auction held mid-morning and donated goods may be delivered to the church from Monday 22nd June. There will be a cake stall, books, white elephant market, plants, hot foods, drinks, rides, games and a bush dance at 6.30pm.

30 (Tuesday) 12noon Nursing Mothers' Assoc., Kew Branch. Lunch, contact Fiona on 853 7821.

JULY

1 (Wednesday) 10am Friends of 'Bodalla'. *Morning with Marvina*, at Paton Memorial Hall, Burke Road, Deepdene. Marvina Wilkinson is a well known floral artist who writes for 'Gardening News', the R.H.S. magazine and is an accredited judge at horticultural shows. Refreshments will be served. Donation \$5 and bookings are essential. Proceeds to 'Bodalla Nursing Home'. R.S.V.P. 885 6298 or 862 1355.

9 (Thursday) 7.30pm Kew Festival Committee Meeting. Be part of the community and join in the planning of the Kew Festival! It's a wonderful event each March and the committee have started organising the festival for next year. The meeting is held in the Committee Room of Kew Council Chambers, enter from the main entrance facing Charles Street.

8pm Nursing Mothers' Assoc., Kew Branch. Breast Feeding. What to Expect? Contact Fiona on 853 7821.

Holiday Programs CHILDREN'S

Holiday activities, organised by Kew Council, for children begin on 6th to 17th July, 1992. The program includes art/craft, games, sport, cooking, drama, tennis, roller skating, ice skating, orienteering at Yarra Bend Park, boating down the Yarra and trips to Luna Park, the Kew Traffic School, Recreation Centre and Darebin Parklands.

Bookings are essential! Enrolment nights are Tuesday, 30 June and Wednesday, 1 July from 6pm to 7.30pm, at Kew Primary School, Pakington Street, Kew.

Occasional Care Centre

Quality child care for children 0-6 years is provided. The centre is located at the rear of 21 Strathalbyn Street, East Kew. **Bookings Tel. 859 6459.**

TEENAGERS

The Holiday Program, organised by Kew Council's Youth Services Development Officer, Kate Laing, is on again! Activities include horse-riding, roller skating, movies, McDonalds and lots more. **call Kate and Book NOW on 854 5221.**

VOLUNTEERS FOR THE COMMUNITY BUS

The Community Bus is a mini-bus which transports Kew's senior citizens from their homes to venues like the Senior Citizens' Centre and day centres. Trips are also made, every Friday, to Kew Junction for shopping and every second Wednesday to the Kew Library.

Jockeys are needed, on a casual basis, to help people who use the service. Generally one day notice is given to the emergency jockey.

Please call Wendy Rahaley, at Kew Council, on 854 5225 if you would like to know how you can help.

COUNCIL MEETING DATES

June 23 Tuesday 7.30pm Operations/Planning & Development Committees

June 30 Tuesday 7.30pm General Purposes Committee

July 21 Tuesday 7.30pm General Purposes/COUNCIL 8.15pm

Meetings are held in the Committee Rooms and Council Chambers at the Municipal Offices. Entrance is via the main portico off Cotham Road.

All these meetings are open to the public. Copies of the agendas are available for inspection, at the loans desk, at Kew Library.

Advertising

Advertising in 'Kewriosity' is an inexpensive and effective way for local traders to keep the community up to date, with the services they provide.

Call the Editor, Lisa Gaffney, on 854 5204 for details on competitive advertising rates.

No endorsement of services advertised is implied by the City of Kew.

Community Tree Planting Day

Saturday the 16th of May was Community Tree Planting Day in Kew. It was also part of Arbour Week.

Over 30 members of East Kew Rotary joined volunteers from Council's Parks and Gardens section in planting over one and a half thousand native trees and shrubs. They were planted along the new bicycle path being built along the Outer Circle Linear, between Peel Street and Willsmere Road.

Despite the cold, wet start, all the plants were in the ground in time for a lunch time sausage sizzle. East Kew Primary School will hopefully continue the project with more planting later this month.



Pictured above at the end of a successful day are (L to R) Ian Lynton (East Kew Rotary) with Parks and Gardens Staff Les Reaby, Bruce Schroder (Superintendent) and Jeff Baade.

KEWRIOSITY DEADLINES

Residents and local community groups are invited to contribute to 'Kewriosity', space permitting. Items for the July edition must be submitted to the Editor, Lisa Gaffney, City of Kew, Municipal Offices, Charles Street, Kew, 3101, before Thursday, 25 June, 1992. The July Edition of 'Kewriosity' will be delivered on the weekend of 11th & 12th July, 1992.

The following list outlines the proposed deadline and distribution dates for 1992.

	DEADLINE	DISTRIBUTION
August Ed.	13th July	1st & 2nd August
September Ed.	17th August	5th & 6th September
October Ed.	14th September	3rd & 4th October
November Ed.	16th October	7th & 8th November
December Ed.	23rd November	12th & 13th December

Friends of Kew Library

Join the *Friends of Kew Library* (FOKL) and become involved with your library.

FOKL promote interest in the library and raise money for library purchases. These purchases have included a map collection, display cabinet, extra armchairs, the basis of a CD collection, a range of video and reference books. Their next project is a CD-ROM computer for the reference section.

Most money raised comes from monthly book sales. These are held in the library foyer on the third Sunday of each month. Books offered for sale are donations from the public or books withdrawn from the library stock. Over \$5000 has been raised in book sales during the last year.

You can help FOKL with book sales in four ways: donating books to the library; helping to set up the book sale on the Saturday before

the sale between 12 noon and 2pm; helping with the sale on the Sunday between 2pm and 5pm (Call Mr Flynn on 859 6415) and purchasing books at the sale.

FOKL have meetings with guest speakers, visit other libraries and notable exhibitions.

There is a special display in the foyer of the library which holds books reviewed by *Friends of Kew Library*. Members select new books which they think will be of interest and write reviews. Contact Mrs Agnes Gregory on 859 5311 for more information.

If you would like to join FOKL pick up a membership form from the library desk. Individuals pay \$8 per year, families \$12 per year and pensioners/students pay half-price. Members also receive notices of meetings and copies of the book reviews.



SHARPS DISPOSAL CONTAINERS

If you or a member of your family need to dispose of syringes or other medical sharps you can purchase a puncture resistant sharps container from the Health Section at the Municipal Offices. The containers are available in two sizes and the cost includes the safe disposal at a medical waste incinerator.

- 3 LITRE = \$ 7.00
- 5 LITRE = \$ 10.00

IN BRIEF

Recycling Garden Pots

Most households have, in their backyards, an accumulation of used garden pots. 'The Pot Recycler' has provided a crate at Kew Council's Depot, in Princess Street, for plastic pots to be deposited. Washing, sorting and stacking pots prior to depositing them helps in the recycling process.

Recycling Kerbside Collection

Just a reminder that the following materials are collected as part of the kerbside recycling collection at Council's Depot; glass, aluminium cans, newspaper, cardboard and all plastic bottles (P.E.T. softdrink, H.D.P.E. milk, vinyl fruit juice and cordial bottles).

Remember to put your recyclables, on your naturestrip, on the first garbage day of the week. If you need further information please call Kew Council on 854 5234.

Outdated Phone Books Recycled

Book muncher bins are now at BP Service Stations which means everyone can easily recycle their old white pages.

Kew Pre-School Association

If your child turns three by 30th June, 1993 and you wish to enrol them at a kindergarten in Kew, then please phone your nearest kindergarten for a central enrolment form. Closing date for applications is Friday 14th August, 1992.

Australian Orthodoxy

The Australian Orthodox Parish of the Holy Trinity, in Glen Iris, is a Russian Orthodox Church that conducts its services in English.

Father Peter Hill, himself a former Anglican Priest, holds Divine Liturgy at 10am every Sunday, in an old Methodist Church at 200 Glen Iris Road.

Adult Literacy Classes

Adult literacy classes are available for people who can speak in English, but who need help with basic reading and writing. Different classes are held to meet a range of literacy levels.

Some adults may be non-readers and not able to recognise everyday information such as names of products, street signs or safety warnings. Others may be able to read, but not write. Filling in official forms or even compiling simple letters could be very difficult.

Many adults who already have basic reading and writing skills may now wish to develop specific areas of literacy such as spelling, punctuation or comprehension. They may need these skills for employment, promotion or just to help in everyday life.

If you or someone you know needs help with their reading and writing, please contact Debbie Noble at the Hawthorn Community House, 39 William Street, or phone 818 8919.

If you would like to become a volunteer literacy tutor please contact the Hawthorn Community House.

Football News



Kew has made an excellent start to the 1992 Amateur season, winning five out of six games! Not only is Kew sitting on top of the ladder, but five players have been selected in the Victorian Amateur Training Squad. Congratulations to Brett Burden, Brian Cullen, Nigel King, Matthew Seuling and Peter Thornely.

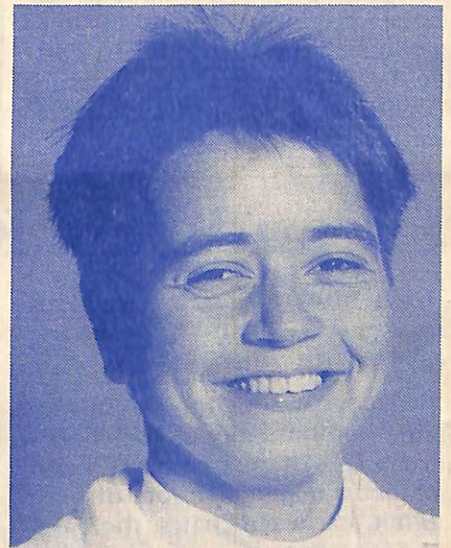
President Ted Kelly has pleasure in announcing, local TV celebrity, Ronnie Burns as No.1 Membership Ticket holder. Thanks is also extended to Panda Restaurant, Hawthorn, for their support and cuisine at the pre-season Jumper Presentation Night.

Women at Midlife

What does midlife mean to women? How different are their experiences? What issues matter to them at menopause? What are their needs? What would they like to change?

A research team of women, at La Trobe University, want to speak to women who are in the midlife years. They would like to talk about midlife and menopause. Even if you have been through menopause and there were no problems, they would like to hear from you.

If you live in Kew and would like to contribute to this important project please call 479 2416 and you'll get Shelly, Dawn or Lyn. If you would prefer to write then please address your letters to Lyn Richards, Reader in Sociology, La Trobe University, Bundoora, Vic. 3083.



Congratulations to ex-Carey Grammar Student, Stephaine Theodore, who has been selected to play in the Victorian Team of Women's Cricket.

Stephaine left Carey in 1988. She is currently sponsored by County and is looking for a job as a Sports Gear Sales Representative.



Printed by:
Industrial Printing and Publicity Co. Ltd.
122 Dover Street, Richmond, 3121
Telephone: 428 2958

PASSIVE SMOKING, HOW DOES IT AFFECT YOU?



May 31 was *World No Tobacco Day* and the commencement of the *1992 Quit Week*.

Most of us are aware that tobacco smoke which enters a smoker's body contains many harmful substances such as carbon monoxide and arsenic. The sidestream smoke which drifts into the air from the burning end of a cigarette contains those same substances, but often in greater amounts! If you are close to people who are smoking, you breathe a mixture of sidestream smoke and the smoke they've breathed out.

Of particular concern is the effect passive smoking has on unborn babies and children. Children have smaller, more delicate lungs than adults and are more affected by tobacco smoke and the chemicals it contains. When exposed to passive smoking they are likely to develop sensitive airways which make them more susceptible to a number of problems:

- chest illness including asthma attacks;
- poor lung functions and abnormally slow lung growth;
- frequent coughs and more serious respiratory illnesses such as pneumonia and bronchitis.

If a mother smokes during pregnancy, the chemicals can pass into the baby growing in her womb and damage the supply route for oxygen and food for the child. Women who smoke also have a greater risk of miscarriage, are more likely to have complications during child birth and are more likely to have a low-weight baby.

If you would like to know more about passive smoking or need advice on how to quit smoking then collect a 'free' **QUIT KIT** from the Health Section at the Municipal offices (phone 854 5245) or the Kew Recreation Centre, High Street, Kew.



18 month old Yi-Yan Fan, with her father, at the Peel Street Maternal and Child Health Centre, Kew.

Don't Litter

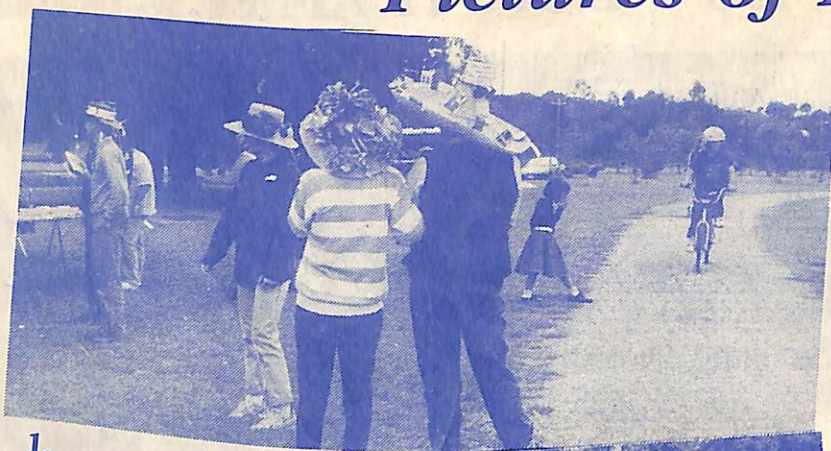
Kew Council spends a considerable sum of money each year dealing with the problems caused by litter.

The Litter Amendment Act came into operation on 1st June 1992.

The following is a list of new or clarified provisions outlining the requirements and on-the-spot penalties and maximum penalties.

	On The-Spot	Penalty Maximum
Advertising material must be placed in letter or newspaper receptacle	\$100	\$500
Advertising material must not be placed on vehicles	\$100	\$500
Advertisers must disclose name of distributor	\$100	\$500
Distributor must disclose name of person responsible for deposit	\$100	\$500
It is an offence to deposit litter from a vehicle	\$100	\$500
The owner of the vehicle is deemed to be guilty, unless a statutory declaration is provided identifying the person responsible		
The Environment Protection Authority		
— can serve a litter infringement notice	\$400	\$1000
— can direct a person to clean up litter	\$100	\$500
— can recover the cost of removing the litter from the person responsible		
— An authorised officer can enter residential properties for the purposes of this Act.		
— A person who witnesses an offence under the Act may inform Council		
— Council may take proceedings against the person nominated		
A person must not efface or set fire to a litter receptacle	\$100	\$500
A person must not move a vehicle carrying an insufficiently secured load	\$100	\$500
If you have any queries please contact a By-Laws Officer or the Senior Enforcement Officer, Errol Wilkins, on 860 5253.		

Pictures of Kew



1.



2.



3.



4.

1. Rita Byrne and Ray Love of G.98 were the winners of the Decorated Hat Competition, earlier this year. The day was a great success and it was organised by Neighbourhood Watch.

2. The Flying Start **Holiday Camp** is on again. It's at Carey Grammar Sports Complex, Bulleen, from Monday July 6th to Friday July 10th, 1992.

To enrol call 853 6023.

3. Kew High School teacher, Annette Charlton, is pictured with Year 9 student Kazumi Ishihari. Annette recently returned from Japan and has plans for the introduction of Japanese and other new subjects at Kew High.

4. **James W. Waters Award**
Congratulations to Craig Kenny! Kew Council's Meals on Wheels and Senior Citizens' Supervisor won the prestigious prize for highest academic achievement of the R.M.I.T. Bachelor of Business and Administration (Local Government).

KEW PHOTO SHOP

1 HOUR QUALITY PROCESSING



NOW OFFERING
ENLARGEMENTS
DONE ON PREMISES

20 x 25 cm (10" x 8") \$5
35 x 28 cm (11" x 14") \$10

183 High Street (cnr Walpole Street), Kew. Phone: 853 5964



Real Estate Agent & Auctioneer
C.C. CLARKE REIV

C. C. CLARKE
& SONS

'For Better
Results'

1 Fenton Way, Kew, REIV
Opposite ANZ Bank

853 0700, Ah: 853 5446, Fax: 853 0707