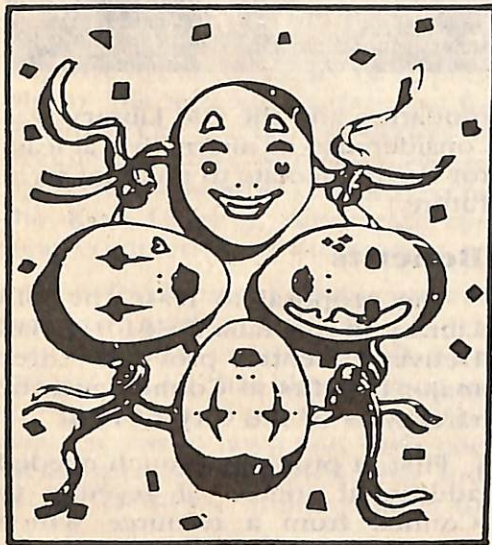


KEWRIOSITY

FEBRUARY 1992

City of Kew, Municipal Offices, Charles Street, Kew 3101. Telephone: 862 2466

'KEW YOUTH ARTS FESTIVAL: 1992'



The first 'Kew Youth Arts Festival' is being held this year, as part of the 'Kew Festival'. There will be an aerosol art demonstration, theatre sports, rap dancing, a dance party and competitions.

PHOTO COMPETITION

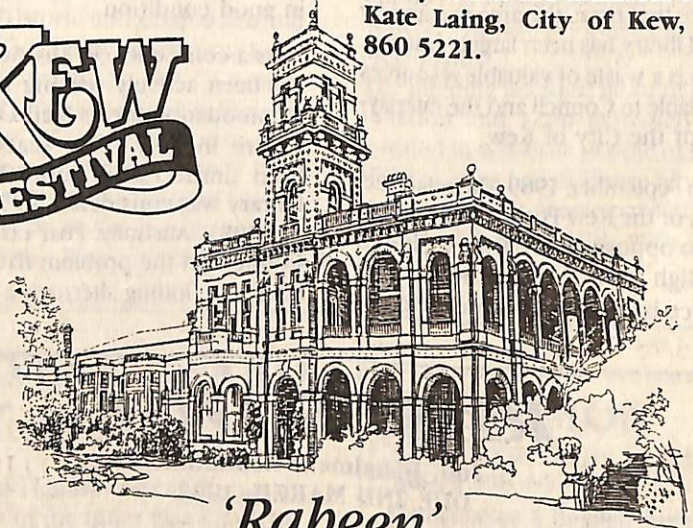
- Open to all young people who live or go to school in Kew, aged between 12 to 18
- Theme is 'Kewmunity'
- Black and white and color prints will be accepted, no slides.
- Only two entries per person
- First prize is a camera and other prizes include photography books and Kew Recreation Centre vouchers
- Winning entries will be displayed in the Municipal Offices and published in 'Kewriosity'.

WRITING COMPETITION

- For Year 9 & 10 secondary students
- 500 words or less on 'My thoughts on being a teenager living in Kew'
- Winning entries will be published in 'Kewriosity' during 1992

— First prize is a fountain pen and other prizes include books and Kew Recreation Centre vouchers.

All prizes will be awarded by the Mayor of Kew, Cr. Daryl Oldaker, at the Festival Presentation Night. Closing dates for both competitions are Wednesday 4th March, 1992. Entry forms are available from Kate Laing, City of Kew, ph: 860 5221.



'Rabeen'

TWO WEEKS OF CULTURE & ENTERTAINMENT

The annual Kew Festival begins on Saturday, 14th March, 1992.

In the 'Alexandra Gardens' there will be a Fete and the Street Parade begins at 11.30am from Fenton Way, Kew Junction.

Prizes will be awarded for the best entrants! Go-Carting will also take place at Willsmere, Kew.

On Saturday, 21st March, 1992 there will be a 'Billy Cart Derby' and the 'Charity Ball' will take place at historic *Rabeen*.

Individuals and groups from within and around Kew are encouraged to enter the Street Parade, contact George Verginis 853 5964 or A.H. 844 2694 for more information.

To book tickets for the 'Charity Ball' call Bronwyn Hayat on 819 3388 or Pam Mulcahy on 416 0948.

Council is currently considering a proposal to lease the 'Old Library' area, below the Municipal Offices in Charles Street Kew, to Australia Post as a Mail Delivery Centre.

Although the area has on occasions been used for meetings and events, such use is very rare and new alternatives are becoming available for that type of use with Council's purchase of the Pakington Street Uniting Church and the proposal to construct a new Scout Hall on the corner of Kellett Grove and Willsmere Road.

Background

In October, 1987 the Kew Library was relocated from the Ground Floor, below the Municipal Offices in Charles Street, to the City Hall. Since that time, the area vacated by the Library has been largely unused. This is a waste of valuable resources available to Council and the ratepayers of the City of Kew.

In September, 1989, the retail section of the Kew Post Office relocated to opposite Holy Trinity Church in High Street, leaving the old Post Office largely unused and unmain-

tained. The only use which has been made of the old Post Office since that time, is as a Mail Delivery Centre.

Over the past two years, Council has continually lobbied the Federal Government about the deteriorating condition of the Post Office and the detrimental effect that its vacancy was having on the Junction retail centre. The option of returning the Post office to the original site was rejected by the Federal Government and thus Council has sought to have the building vacated so that it may be sold to any other party who could return it to a usable building in good condition.

As a consequence, Australia Post has been actively seeking new accommodation for its Mail Delivery Centre in Kew. That search had been unsuccessful until the Old Library was considered. In November 1991, Australia Post consulted Council on the problem they were having in finding alternative accom-



modation and the Old Library was considered as an alternative, at least for the immediate to medium term future.

Benefits

The proposal to lease the Old Library to Australia Post for a Mail Delivery Centre provides three major benefits to Council and the ratepayers of the City of Kew.

First, it provides a much needed additional source of revenue to Council from a resource which effectively already exists, thus requiring little further investment.

Second, it enables the old Post Office building to be vacated, thus permitting some action on the reuse of that building as the focus point of the Kew Junction retail centre.

Third, some of the revenue received from the rental, enables Council to modify the Old Library area so that when it is no longer required by Australia Post, the area can continue to be used productively as an additional revenue earning source for Council.

Proposal

Details about the proposal can be obtained from the Kew City Offices. In broad terms however, it is proposed that the area would be used to sort and deliver postal mail for the Kew area. It would be the Centre from which the Kew 'Posties' would operate.

RATES DUE

**2nd. Instalment Reminder
DUE 2ND MARCH, 1992**

The Final Days on which payments can be accepted, free of interest charges are:

1. In one amount 10th. April, 1992.
2. Second Instalment 2nd. March, 1992.
3. Part Payments Balance by 10th. April, 1992.

The Local Government Act provides that interest shall be applied to all rate payments not received by the due date. The current prescribed rate of interest is 16 per cent.

Interest on late payments is calculated from the date the rate became due and payable (10th. December, 1991), until payment is received by Council.

It is the ratepayers' responsibility to ensure that all payments are received on or before these due dates. **No responsibility can be accepted for payments delayed in the post.** Interest charges are a statutory requirement of Council.

If further information is required please contact the rate collector's office on 860 5246.

MAYOR'S COMMENT

The first edition for 1992 and summer seems to have finally arrived! The weather was fine for the 'Australia Day Breakfast' in the Alexandra Gardens, on Monday 27th January. It was a great morning with members of the community coming together to celebrate our heritage.

The gardens in Kew are especially beautiful at this time of year. They offer a peaceful retreat and recreational space.

The Alexandra Gardens' 'Access for All' project was developed jointly by the Kew Rotary Club and Kew Council. It was first mooted by Rotary in mid 1987. The aim was to improve the accessibility of all people to this heritage garden and its features. The recent completion of disabled persons' toilets which are open from sunrise to sunset (next to the Kew Library), represents the near completion of the project.

The development of this project was to enable the Alexandra Gardens to be enjoyed by all. The 'Access for All' has also resulted in the provision of pram and wheelchair access to lawn and barbecue areas, specially designed BBQ and picnic facilities, improvements to

pathways and entrances, joint access to the rotunda, modification of drinking fountains and installation of handrails.

In February, 1990, renowned local sculptor, Mrs Leopoldine Mimovich made a gift of 12 bronze sculptures, to the people of Kew. Ten of her sculptures can be seen in the 'Alexandra Gardens' and I urge everyone, especially whilst the weather is good, to visit the gardens.

KEW'S OLD POST OFFICE

The historic and dilapidated old post office building, in Kew Junction, is owned by the Commonwealth Government and its future is naturally of some concern. The building has been vacant since 1987 when Australia Post moved up the road. However, the sorting section of Australia Post remained in the



original building, but the proposal for this section to move to the old library area at Kew Council may finally lead to occupancy. Many suggestions have been made as to its viability as a restaurant, theatre, arts centre, museum and even a McDonalds!

The building is a focal point of Kew Junction and I am extremely interested in what the people of Kew think as to its future. Please write to me at the Kew Municipal Offices, PO Box 42, Kew, 3101, with your ideas.

KEW CITIZEN OF THE YEAR AWARD AUSTRALIA DAY 1992

The Kew Citizen of the Year award was presented to Mr Graeme Lindsay by the Mayor of Kew, Cr. Daryl Oldaker and Cr. Gery Petrie, at the 'Australia Day Breakfast' on Monday, 27th January, 1992, in the Alexandra Gardens.

Mr Lindsay was made Kew Citizen of the Year for his outstanding contribution to the community. He was principal of Kew East Primary School, has served on the Kew Festival Committee and organised the street parade for a number of years. He has also been directly involved with young people in Kew, as a Scout leader and group leader.

Graeme Lindsay was an inaugural member of the Inner East Life Education Committee through his involvement with Kew Rotary Club. He still works tirelessly for this organisation and is currently a Director of the Kew Music Centre co-operative.

The other nominees for the award were Mrs Constance Irwin, Mr Noel Lyall, Dr Raymond Martyres, Mr Ian Mathers, Ms Fiona Reynolds and Ms Karen Weston. They were presented with certificates as an acknowledgment of their contributions to the Kew community.

We congratulate Mr Graeme Lindsay and thank all nominees for the care, interest and time they put into this community.



KUMON

KEW STUDY CENTRE
PHONE: 817 1013

Mathematics & English Tuition

- Individualised program for all ages.
- Special pre-school classes from 2 years of age.
- Develops confidence through easy starting point and mastery of each new concept.
- Success through daily exercises.
- Strengthens weak students. Challenges average and bright students.
- Monthly fee: Primary \$50.00. Secondary \$55.00.



Printed by:
Industrial Printing and Publicity Co. Ltd.
122 Dover Street, Richmond, 3121
Telephone: 428 2958

DIARY DATES FOR FEBRUARY/MARCH

FEBRUARY

17 Monday 10.30am Kew Arthritis Self Help Group, meeting in Hall three of the Kew Library Annexe, Charles Street, Kew. The meeting will be about preparing for the Kew Festival stalls. Morning tea will be served and everyone is welcome.

19 Wednesday 11am Kew Legacy Widows Club, first meeting for 1992, at Kew RSL Hall, 63 Cotham Road, Kew. Val Blakey will continue her talk on the visit of a little girl from Chernobyl to her home. All Legacy widows welcome. Enquiries 853 7049.

11.30am & 12.30pm Kew Community House Speaker & Luncheon, 6 Derby Street, Kew, ph.862 3126. The Wednesday lunch at 12.30pm will continue through 1992 and residents are invited to come along and enjoy the lunch at the inexpensive price of \$2. The guest speaker at 11.30pm, for 'Know Your Community', is Helen Clough from 'Compass' — Support service for homeless people with special support needs.

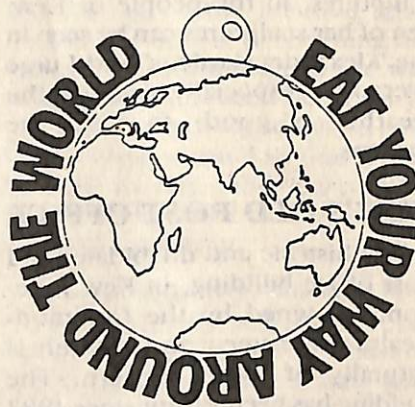
Following the lunch there will be a recreation and games afternoon where people can come along to play or watch a variety of table games, or even just have a cup of coffee and meet some new people.

20, 21, 22, 27, 28, 29 at 8.15pm 'A Sting in the Tale'. This comedy thriller will be performed at Kew High School in the Community Theatre, by the Kew based Track Players. Tickets are \$12 and \$9 (conc.) which includes champagne supper. For bookings and group discounts ring Margaret Heffernan on 699 1961.

24 Monday 10am — 2.30pm Kew/Balwyn Branch of 'The Country Women's Assoc. of Vic. Inc.' Craft meeting, BYO lunch at the Uniting Church Hall, 142 Normanby Road, East Kew, ph 859 1206.

1.30pm Kew Garden Club Afternoon Group, meeting — No. three hall in the Library complex, enter via Cotham Road. Judy Bartar will talk on Daisies. Visitors are welcome. There will not be a meeting in March because of the Art Exhibition.

27 Thursday 2pm Kew Auxiliary Royal women's Hospital, meeting in the no.three hall of the Kew Civic Centre. New members welcome.



29 Saturday 3pm — 8pm 'Fun & Food Fair' at Kew East Primary School. Cnr. Cadow Street and Windella Ave. Many stalls and activities for all ages. Entertainment includes minigolf, book bazaar, pony rides, disco, bands, face painting, childrens' games and many more. It is the school's Centenary Year so come and have Devonshire tea and catch up with old friends and class mates.

A selection of many foods will be available including Italian, Middle Eastern, Mexican, Jewish, Greek, Australian, Indian and Thai. The theme is International and everyone is invited to dress in national costume of your choice.

MARCH

1 Sunday 'Paint Day' Some 4,000 volunteers will paint the exteriors of 200 single storey homes of low income, elderly people in selected suburbs of Melbourne. Supported by Rotary, information hotline; 008 804 804.

15 Sunday 'Willsmere Open Day and Concert'. The Yarra Bend Park Trust in conjunction with Kew East Rotary Club present this open day. Historic Willsmere, once a mental asylum, overlooks Yarra Bend Park and the city. Wander through its grandeur and see the 1850's building in its original state. Explore the famous twin towers, cells and fever tents. See displays of local history and the wonders of the magnificent Yarra Bend, only metres from Willsmere's front door.

Come early to see everything before being entertained by the musicians of the Kew City Band, who will perform in the grand central courtyard at 2pm. Cost \$5 adults and \$2 children.

COMMUNITY DIRECTORY

A new Community Directory will be delivered to every household in Kew, during March, 1992.

The Community Directory is a quick reference guide of Council and community information.

If you are a member of a local group and wish information to appear in the directory, or if previous information is out of date, please write to the Editor, Lisa Gaffney, Kew Council, PO Box 42, KEW, 3101. All submissions must be in writing and received before 24th. February, 1992.

Advertising

Advertising in 'Kewriosity' is an inexpensive and effective way for local traders to keep the community up to date, with the services they provide.

Call the Editor, Lisa Gaffney, on 860 5204 for details on competitive advertising rates.

No endorsement of services advertised is implied by the City of Kew.

FREE SAUSAGE SIZZLE BREAKFAST AT THE KEW RECREATION CENTRE



Pictured, front centre, is Kew Councillor John Murray with Council staff and 'Kewite' breakfasters.

In December, 1991, Kew Council hosted a free sausage sizzle breakfast, at the Kew Recreation Centre. The breakfast was for early risers, starting at 6.30am and finishing around 9.00am.

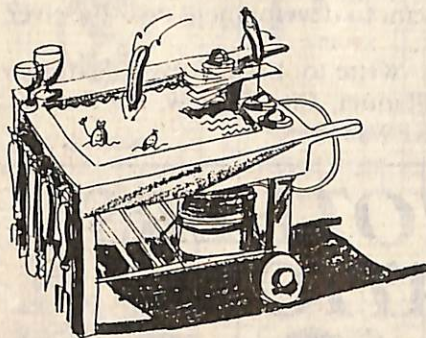
The Kew Recreation Centre will be hosting an Open Day on Sunday 22nd. March, 1992. Further details will be featured in the March edition of 'Kewriosity' or call Sharon, at the Centre, on 853 6177.

SPARE TIME?

Kew Cottages is home to over 700 intellectually disabled adults, all with differing needs. Volunteers, within the community, are needed to assist in simple leisure activities and companionship.

Staffing in all sections of the Cottages is at a minimum. Although the standard of nursing care is excellent there is never enough time for specific ongoing attention, on a one to one basis.

If you have a small amount of time to spare please contact the Coordinator of Volunteers, at Kew Cottages, on 860 1301.



KEW GARDEN CLUB



President of the Kew Garden Club, Yvonne Knight, with Alex MacKay as he was presented with Life Membership of the Club, at their Christmas break-up party.

COUNCIL MEETING DATES

- Feb. 18 Tuesday 7.30pm: General Purposes Committee
8.15pm: Council
- March 3 Tuesday 7.30pm: Operations Committee
7.30pm: Planning & Development Committees
- March 10 Tuesday 7.30pm: General Purposes Committee

Meetings are held in the Committee Rooms and Council Chamber at the Municipal Offices. Entrance is via the main portico off Cotham Road.

All these meetings are open to the public. Copies of the agendas are available for inspection, at the loans desk, at Kew library.

KEWRIOSITY DEADLINES

Residents and local community groups are invited to contribute to 'Kewriosity', space permitting. Items for the March edition must be submitted to the Editor, Lisa Gaffney, City of Kew, Municipal Offices, Charles Street, Kew, 3101, before Monday 24 February, 1992. The March Edition of 'Kewriosity' will be delivered on the weekend of 7th & 8th March, 1992.

URBAN DESIGN GUIDELINES FOR LOWER YARRA RIVER

The cities of Kew, Hawthorn, Collingwood, Richmond and Prahran are undertaking a review of development guidelines for the areas adjacent to the Yarra River, downstream at Dights Falls.

The objective of this study is to develop comprehensive, uniform and clear guidelines for development along the Yarra River. The guidelines will aim to protect the River from visual intrusion, caused by the inappropriate siting and design of buildings whilst recognizing the varied and often conflicting development demands, existing on different sides of the River.

Consulting firms 'Mark, McWha Pty Ltd.', Landscape Architects and 'Henshall Hansen Associates', Planners and Economists, have been appointed to undertake this study.

The study is being managed by a Steering Committee which will oversee preparation of the guide-

lines, consider options and advise each of the participating councils. This committee consists of a councillor and community representative from each municipality, with representatives from Melbourne Water (previously MMBW) and the State Government Department of Planning and Housing.

The Yarra River is recognized as a major environmental asset to metropolitan Melbourne. Community involvement is important and necessary to enable a full understanding of the issues concerning the Yarra River area. Kew representatives on the Steering Committee are; Cr. Allen Martin, Dymphna Coleman and Brian Goyen (tel. 860 5249). Residents are encouraged to advise the representatives in writing of their concerns on any issues relevant to development near the river.

Write to: Brian Goyen, Statutory Planner, City of Kew, PO Box 42, KEW 3101.

NURSING MOTHERS' ASSOCIATION



Mrs Fiona Reynolds (centre right) from the Kew branch of the Nursing Mothers' Association of Australia (NMAA) presents Maternal and Child Health Care Nurses (from left) Sister Maureen Bell, Sister Shirley Tinker and Sister Wanda Romanowski with a subscription to the Lactation Resource Centre and a complete set of NMAA's breastfeeding and mothering books.

If you would like to find out more about the Kew branch of the NMAA call Fiona on 853 7821.

KEW COMMUNITY HOUSE

6 Derby St.

A wide variety of exciting classes will be held at Kew Community House, between February and April this year.

Everything from cooking, learning a foreign language, sewing and crochet, organic veggie growing, yoga and recreation for adults will be offered. New initiatives include time management for VCE students, to help cope with year 12 and a playgroup for fathers and house husbands.

During the summer vacation the House ran a successful holiday program, called by some parents as a 'sanity program'. It was a great success according to the parents (and the children!). It's planned to run this program in future school holidays.

Child Care will again be offered on Monday and Tuesday mornings, during school terms. Subsidized child care will cost \$12 per session (3 hours) or \$4 per hour.

Kew Community House offers various classes, groups and activities in an informal, warm and friendly atmosphere. The House aims to serve the residents of Kew and is used by a wide variety of groups.

The Community House needs a wide range of volunteers to help in the office, assist with maintenance and help the experienced child care staff. You are invited to drop in for a chat and discuss your ideas with the co-ordinator, John Julian, or one of the office volunteers. Phone, during the week, between 10am and 3pm on 862 3126.

NEW PARKING SIGNS

New types of parking signs have recently started to appear on streets in Kew. These new signs use larger letters and symbols so that they can be more easily read by motorists.

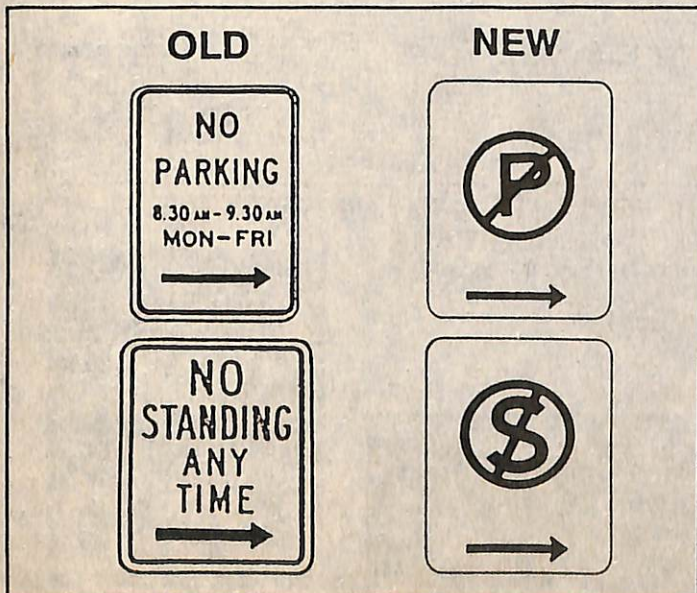
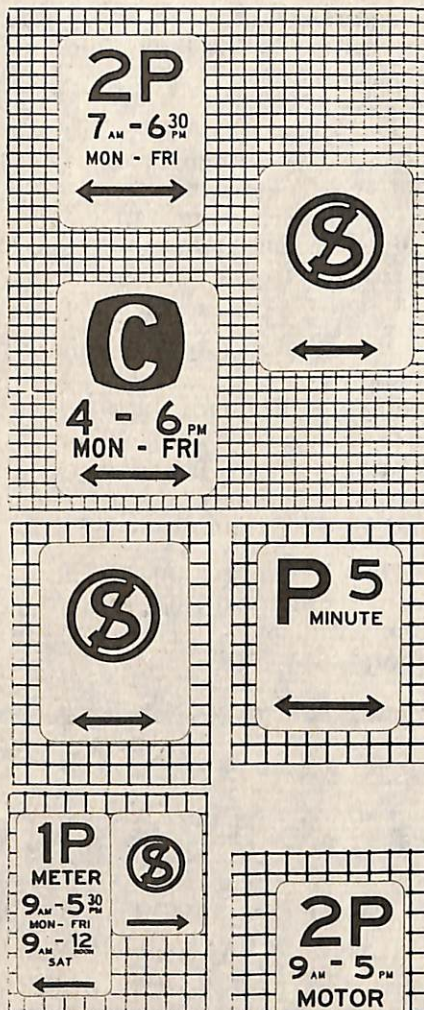
The new signs are being introduced throughout Victoria and the rest of Australia. The new signs will be phased in over a period of seven years. The old type of parking signs will remain valid until 1 January 1998.

The new parking signs remove all unnecessary wording. The important information will be displayed more prominently. The new signs should be easier to understand by motorists once they become familiar with them.

An example of the difference between the old and new signs is shown below. Some examples of the more common new signs that will be introduced are also shown.

Pamphlets explaining all new signs are available from Kew Council offices, Charles Street.

Any queries can be directed to Council's Special Project Engineer, Russell Fairlie on 860 5232.



ADULT LITERACY

Swinburne College of TAFE Access Education Department is again offering second chance learning to adults from the community. People who want to upgrade their basic skills can work on improving their writing, spelling and reading.

Adults come to this program for many reasons. Last year some people came because they had reading difficulties and wanted to read with their children. Others needed to improve their writing for work and came in the evenings. Some people were looking to improve their skills in a tough job market.

Adults have classes either in a small group, or on a one to one basis with a trained volunteer. It is assumed that participants speak English. These basic education courses are free.

If you want to know more please ring Mary Sutherland at Swinburne on 819 8685. If you know someone who may not be able to read this please tell them where to ring!

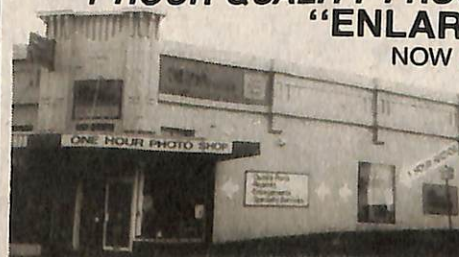
There is also a separate Life Skills Program for mildly Intellectually Disabled Adults — Sue McBride will answer your enquiries on 819 8118.

KEW PHOTO SHOP

1 HOUR QUALITY PROCESSING
"ENLARGEMENTS"

NOW DONE IN STORE

20 x 25 cm = \$5.
35 x 28 cm = \$10



183 High Street, (cnr Walpole St.), Kew.
Phone 853 5964.

10% OFF CAMERAS
MENTIONING THIS AD

NATIONAL TRUST'S GUIDE TO RENOVATING INTER-WAR HOUSES

A new book entitled 'Our Inter-War Houses. How to recognise, Restore and Extend Homes of the 1920s and 1930s' has been launched by the National Trust of Australia (Victoria).

For the first time the houses of the inter-war period are described in a comprehensive and authoritative manner.

The book, by architectural historian, Bryce Raworth, also provides advice and practical tips on conservation, renovation, building infill and streetscape guidelines for homeowners and councils.

Bryce Raworth is available to advise Kew residents, at no cost, on Monday 17th February and Monday 16th March, 1992. For an appointment please phone the Planning Department of Kew Council on 860 5250.

The 60 page paperback also features a foreword by Barry Humphries, who grew up in an inter-war home in Melbourne. An exterior colour chart from the period, sponsored by Dulux, has also been included.

'Our Inter-War Houses. How to recognise, Restore and Extend Houses of the 1920s and 1930's by Bryce Raworth is available for \$15 from the National Trust, Kew Council (limited copies), Hill of Content and McGills' bookshops.

Further information is available from the National Trust, Tasma Terrace, 6 Parliament Place, Melbourne, phone: 654 4711.

ROW BOAT FOR DISABLED

The Rotary Club of Kew's 'Float a Boat' Launching Day will be held on Sunday 8th March, 1992 at Studley Park Boathouse. The specially modified row boat has been purchased for people with disabilities, so that they may enjoy the beauty of the Yarra through boating.

The launch will be attended by various dignitaries and representatives of Rotary, hospitals, Kew Council and the Yarra Bend Park Trust.

The row boat will be available for people from the Royal Talbot Rehabilitation Centre, Kew Cottages, Fairfield Hospital and Yooralla Society.

The 'Float a Boat' will be entered in the Kew Festival Street Parade on Saturday 14th March, 1992 and will be on display afterwards in the Alexandra Gardens.

MENS SHOE AND RUNNER CLEARANCE

WERE
\$42.50
to \$95.00

MENS SHOE — DISCONTINUED LINE
BROKEN SIZE RANGE LEATHER UPPER
PURNELL HARRISON RIVERS PAVILLION BARETTA

\$30

NORMAL
\$49.95
to
\$69.95

FAMOUS DUNLOP KT 26
JOGGER LEISURE SHOE WITH KINETIC
SOLE SIZE 6-12
SFIDA TENNIS SHOE, LEATHER UPPER

\$40

WE ARE ALSO STOCKISTS OF THE POPULAR — WELL KNOWN

"ROSSI" "BLUNDSTONE" "DR. MARTENS"

(ENGLISH & NEW ZEALAND) FOOTWEAR

The ORIGINAL
Dr. Martens
COLLEGE SHOES



Blundstone
Footwear

An Australian Tradition.

BOB STEWART
of Kew

Men's Wear — Boy's Wear — College Wear — Footwear
201-207 HIGH STREET, KEW, VICTORIA, 3101
Phone: 853 8429



The Original
Air Cushion Sole
MADE IN ENGLAND