

KEWRIOSITY

DECEMBER 1991

City of Kew, Municipal Offices, Charles Street, Kew 3101. Telephone: 862 2466



Seasons Greetings

PROFESSIONAL CLEANING SUPPLIES

would like to make a statement on the environment!

If you bought 5 litres of dishwashing concentrate from Professional Cleaning Supplies, you would pay \$12.00 and because it's a concentrate you could water it down. If normally you buy a 500ml container of detergent elsewhere, by purchasing 5 litres you save money and help this planet because you just saved it from having to dispose of 10 plastic containers. After you have run out of detergent you can come back to Professional Cleaning Supplies at 283 High Street, Kew and pay only \$10 for a refill.

For all your cleaning problems including a full range of vacuum cleaner bags ph: 853 0177.

KEW'S FORM OF OPEN GOVERNMENT

In 1989, the State Government adopted a new Local Government Act which replaced a very prescriptive Act which has been built upon since 1958. The new Act changed many of the well established practices of Local Government. Some parts of the new Act will not come into force until October, 1992.

One of the parts which does come into force in October, 1992, requires Council to repeal all of its existing by-laws and replace them with local laws. One such local law which Council is currently considering is its Meeting Procedures Local Law.

Under the previous Local Government Act, Councils could close the doors to the public for all of their Committee Meetings and a large part of their Council Meetings.

This has all changed under the new Act, whereby Councils are now required to hold open meetings of Special Committees and Council, except for some specific items such as contractual matters, which can be discussed in camera.

To some Councils this has been a major change to their previous practice.

In Kew, there has been no change to our previous practice, because Kew Council was one of the first Councils in Australia to open its meetings to the public.

In addition, Kew pioneered a further refinement to open meetings by introducing several years ago, public participation in Council's considerations of matters before it. In this regard, Kew is still in the minority of Councils in Australia which encourage the community to give their points of view on any matters being considered by the Council.

Several Councils advise the public that they have public participation programs, however their programs are limited to members of the public being able to submit written questions on notice to the Council, which are answered at the Council meeting. This form of public participation should not be confused with the Kew approach.

In Kew, any member of the public may attend the Special Committee Meetings of Council and to have input into the discussion on items being considered by the Committee, before that matter is decided by the Committee.

In cases where it is known that a particular matter will have direct influence on residents, Council advises those residents of the matter being considered, the recommendation which will be made to the Committee and invites the residents affected to attend the meeting to put their points of view.

At the meeting, the procedure which is followed starts by Council Officers asking anyone in attendance, to advise which item on the agenda is of interest to them, and whether they wish to make a comment on that item. If a number of people are interested in the same item, that item is brought forward on the agenda to be discussed first by the Committee. This is to avoid inconvenience to the public.

Upon introducing the item, the Chairperson will refer to the list of people provided by the Officers to ascertain which people wish to



speak on that item. He or she will then invite the individual to address the Committee and may then invite questions to clarify any points which they have raised.

When all the people who have wished to comment have addressed the Committee, the Committee will then consider and resolve upon the matter, taking into consideration the comments made.

Agendas for all Committee Meetings and Council Meetings are available for perusal by the members of the public in the Library and at the Municipal Offices after 3pm on the Friday before each meeting.

All Committee Meetings are held on Tuesday evenings, commencing at 7.30pm. On the first week of the meeting cycle, half of the Council meets as the Operations Committee and the other half, as the Planning and Development Committee. Most building and town planning applications are considered by the Planning and Development Committee whilst the Operations Committee considers all other areas of Council operations and in particular, traffic management, finance and community services.

On the second week of the cycle, the whole Council meets as the

Continued page 3



MAYOR'S COMMENT

The festive season is a time of good will which incidentally is the basis of sister city relationships. Council has resolved to seek membership of the 'Australian Sister Cities Association' with the intention of forming a link with another like city.

The sister city movement, as a world wide concept, came into its own shortly after World War II. The goals are to establish enduring networks of communication between the cities of the world, to cut across boundaries and reduce the likelihood of polarisation and conflict among nations.

Council is enthused by the benefits of goodwill and the establishment of close bonds fostered by the 'Sister Cities Association'. The ideal is to increase communication and exchange through city to city affiliations. It provides cultural enrichment through exchange of ideas, arts and customs of the communities. The members of each community have an interest in visiting their sister city. The potential for developing cultural and educa-

tional links, new industries, tourism and trade is great!

Generally the sister city selected has characteristics which are common to the other city. Kew is renowned for its large houses, beautiful gardens and large number of private schools. Over the next few months Council will consider which cities are the most appropriate for Kew to seek a sister city link, both within Australia and overseas.

The sister city relationships take local government beyond its normal boundaries, both physically and philosophically. It is a role which can only benefit the community and international goodwill.

It is timely, during the Christmas and New Year holiday period, to acknowledge the service and support



of my fellow Councillors, who perform long hours of unpaid work. None of us could do it without the support of our families, so special thanks for their understanding.

I would also like to take this opportunity to wish everyone in Kew a joyous Christmas and a rewarding and safe New Year.

CHIEF EXECUTIVE'S COMMENT

Continued from page 2

General Purposes Committee. Items are considered by this Committee include development of policies and contentious matters referred by either of the other two Committees.

The cycle is completed in the third week, when Council meets to consider such matters as petitions and joint letters, together with all recommendations made to the Council by the other Special Committees. Each of the Special Committees have a number of routine areas in which they may make decisions which are binding upon the Council. However, most matters are referred to Council as a recommendation from these Committees.

By utilising this approach, Council is able to provide a mechanism which allows the public to have a

great deal of input to its decision making process.

The last meeting of Council for 1991 will be on Tuesday, 17th December, 1991 with the Council going into recess over the Christmas/New Year period. Council resumes its meetings on the first Tuesday in February, 1992. May I conclude by wishing all Kewriosity readers a very Merry Christmas and a Happy, Prosperous and Safe New Year.



COMMUNITY DIRECTORY

In January 1992, every household in Kew will receive an updated 'Community Directory'. The directory is a quick reference guide of Council and community information.

If you are a member of a local group and wish information about a community group to appear in the directory, or if previous information is out of date, please write to the editor, Lisa Gaffney, Kew Council, PO Box 42, KEW, 3101. All submissions must be in writing and received before 20th. December, 1992.

DISTRIBUTION OF COUNCIL NEWSLETTER

Community groups who are interested in earning money, by distributing 'Kewriosity', are invited to contact the Public Relations Officer, at the City of Kew, on 860 5204.



'AROUND THE BEND IN SUMMER'

The Yarra Bend Park offers many summer time holiday activities.

Every Sunday over summer there are **Buskers**. Listen to sounds of the Irish outback, in and around Studley Park and Kanes Bridge.

Friday and Saturday nights at dusk, for two to three hours there are **Nightrows**. Setting off at dusk you are rowed down seven kilometres of the Yarra River. It is considered one of the best ways to experience the magnificent corridor of wildlife which include possums, bats and owls. Complete the evening with billy tea and damper. Cost: adults \$11 and children \$6.

Sunday 15th December, 1991 at 1.30pm, Music Around the Bend. The wind ensemble from the Kew Philharmonic, will perform for lunch in the picturesque surrounds of the Studley Park Boat House. Enjoy a bite to eat, a lunchtime concert and then hire a rowboat.

10th, 14th and 23rd January, 1992 Junior Ranges, ages eight to ten only. Fun and adventure in the park. Learn about smells, touches, animals, plants and become a Junior Ranger! BYO strong shoes and a drink. From 9.30am — 1pm, cost: FREE.

10th, 14th and 23rd January, 1992 Kids Kapers, ages eight to ten only. Fly a kite and explore the park with the rangers. BYO strong shoes and a drink. From 1.30 — 4pm, cost: FREE.

Sunday 12 January, 1992 Bird Lurk at 8am. Come and see some of Yarra Bend's 160 species of birds, on a morning walk, along the Yarra River. Conducted by local bird expert, Celia Brown, from the Bird Observers Club. BYO binoculars, cost: FREE.

Friday 17th January, 1992 Nightwatchers. Have you been spotlighting for animals on guided walks before? Why not try a different nightlife experience, get in touch with the way the world is half of the time. Great for families, cost \$3 per family.

Sunday 19th January, 1992 The Yarra Bend School from 10am — 4pm. Ever wanted to

paint a landscape or a bird in flight? An experienced local artist will show you how in Melbourne's most magnificent landscape! Bring your favourite medium: watercolor, oils, etc . . . and easel. Cost: \$30.

Tuesday 21st January, 1992, at 7pm; Saturday 1st February, 1992 at 12.00 — 3pm and Saturday 22nd February, 1992 at 10am — 1pm: Orienteering. An excellent way to see Yarra Bend Park and exercise as well. Run, walk or crawl on a choice of course lengths from easy to challenging. Novices welcome. Yarra Bend Park, Melways 2D F7.

Tuesday 21st and Saturday 25th January, 1992: Learn to Kayak, from 10am to 1pm. Expert tuition by experienced instructors from the Victorian Board of Canoe Education. Half day lessons with kayaks and all safety equipment supplied. Cost: \$15.

Sunday 26th January, 1992, Kite Day, from 10am — 4pm at no cost. See kites flown, fly your own, or make one to fly. A whole days fun with demonstrations by experts, material to make your own free kites and heaps of space to fly them. Face painting too! At Yarra Bend Park, Melways 2D E5.

Saturdays 1st and 8th February, 1992: Hat Making with Weeds and Reeds. How do you make attractive hats from all local materials? Learn from a craftsperson and take home a new hat. Cost of class \$50, materials \$10.

Sunday 2nd February, 1992: Eccentric Sports Festival from 10.30am — 7pm, no cost. Gaelic football, hurling and other sports you don't normally get to see. Seven a side teams beat it out in traditional gaelic style. Irish food and drink will be available. Yarra Bend Park, Melways Ref. 2D E3.

7th — 16th February, 1992: Diamaru Rotary Hole-In-One Golf Competition. At the Victorian Open it happened to one golfer twice! If you manage a hole-in-one

at the Studley Park Golf Course's special fairway, you could win \$5000 in cash! Come and have a try. Studley Park Golf Course, Walmer Street, Kew.

Sunday 9th February, 1992: Early!! Dawn Watch, \$5 adults, \$3 children and BYO Binoculars. Absolutely the best time to see and hear some of the 120 species of birds that visit and live at Yarra Bend Park, plus the sunrise from a hill with 360 degree views of Melbourne! Then pancakes and billy tea for breakfast.

Sunday 15th February, 1992: Willsmere, Concert and Curiosity. Historic Willsmere, once a Mental Asylum, overlooks Yarra Bend Park and the city. Wander through its grandeur and see this 1850's building before it is converted into a hotel. Explore the famous twin towers, cells and fever tents. See displays of local history and the wonders of magnificent Yarra Bend, only metres from Willsmere's front door. Come early to see everything before being entertained by the talented musicians of the Kew City Band, who will perform in the grand central court at 2pm. Cost: \$7 adults and \$2 children.

There will be golf clinics by the Yarra Bend professional, Bill Cussell and his staff at the Studley Park Golf Course. Bikes can also be hired for the main Yarra trail. For more information about any of these activities please call the Yarra Bend Park Trust on 482 2344.

SCHOOL CENTENARY

1992 is the centenary year for Kew East School, Kitchener Street, East Kew, 3102.

There will be celebrations next year and a mailing list of all former pupils, parents and staff is currently being compiled. Everyone who has been associated with the school is invited to contact the school in writing, or phone (03) 859 2903.



Children painting at Kew Primary School, on a holiday program, earlier this year.

Kew Council's Holiday Program for Children

Kew Council has many activities for children in January, 1992. There will be art and craft classes, cooking and drama, entertainment and sporting activities at Kew Primary School, Pakington Street, Kew.

Council has also organised various excursions, including a trip to 'Luna Park' and even a mime workshop. Many activities revolve around the scenic Yarra Bend, which include canoeing, golf, orienteering, a bushdance, bush walks and bush food.

Bookings are essential and enrolments will only be taken between 6pm and 8pm, on Monday 16th and Tuesday 17th December, 1991, at Kew Primary School, Pakington Street, Kew. All enrolments are to be paid on the night of booking and no enrolments will be taken once the programs have commenced.

For more information ring Kew Council's Outside School Hours Coordinator, Pierrette Boustany, on Mondays or Wednesdays on 860 5223.

COUNCIL MEETING DATES

Dec. 17 Tuesday	8.00pm General Purposes Committee
	8.45pm Council
Feb. 4 Tuesday	7.30pm Operations/Planning & Development Committees
Feb. 11 Tuesday	7.30pm General Purposes Committee
Feb. 18 Tuesday	7.30pm General Purposes Committee
	8.15pm Council

There are no meetings in January. The first meeting for the New Year will be on 4th. February, 1992. Meetings are held in the Committee Rooms and Council Chambers at the Municipal Offices. Entrance is via the main portico off Cotham Road.

All these meetings are open to the public. Copies of the agendas are available for inspection, at the loans desk, at Kew Library.

DAY TRIPPERS

A holiday program for young people, aged from 11 to 16 years, has been organised by Kew Council's Youth Services Development Officer, for January, 1992.

Monday 13th January, 1992 — Horse Trail Riding — \$30

Wednesday 15th January, 1992 — Movie & Pizza Hut — \$10

Friday 17th January, 1992 — Luna Park — \$10

Monday 20th January, 1992 — Anglesea & BBQ — \$8

Wednesday 22nd January, 1992 — Rollerskating — \$10

Friday 24 January, 1992 — End of Holiday Bash at the Kew Youth Centre, 10-12 Derby Street, Kew — \$2

Bookings are essential. Call Kate Laing, at Kew City Council, on 860 5221 to secure your place now!

BOATING ALONG THE YARRA

The Rotary Club of Kew has just purchased a row boat for people with disabilities, so that they may enjoy the beauty of the Yarra through boating.

The row boat is being modified and the Club hopes to launch the boat this summer. Their goal is to provide three row boats for the Studley Park and Fairfield Boat-houses, but they need the support of the community.

These boats will be used by people at Kew Cottages, the Royal Talbot Rehabilitation Centre, Fairfield Hospital and the Yooralla Society.

The cost of each modified boat is \$2000. If you would like to show your support, please send any donations to the Rotary Club of Kew, PO Box 101, Kew, 3101. For any further information phone Mr Donald Cameron on 853 9000.

ADVISORY BODY SEEKS NEW MEMBERS

The Inner East Regional Advisory Council (RAC) is the key advisory body to Community Services Victoria (CSV).

It has been operating for two years and has been very active. In 1991 the RAC undertook a survey to find out what CSV clients thought of the services provided. It has also provided advice on individual CSV programs, such as Home and Community Care (HACC).

Two vacancies need to be filled to commence a three year term, with the RAC, from January 1992. Appointments are made by the Hon. Kay Setches, Minister for Community Services and Minister responsible for Child Care.

If you are interested in representing aged services or ethnic communities please contact, Executive Officer, Mrs. Pat Sparrow, on 898 9411. Mrs. Sparrow can provide further information about the RAC and nomination forms.



CITY OF KEW URBAN DESIGN GUIDELINES FOR LOWER YARRA RIVER COMMUNITY REPRESENTATIVE REVIEW COMMITTEE

The City of Kew together with the Cities of Hawthorn, Collingwood, Richmond and Prahran is to undertake a review of development guidelines, for the areas adjacent to the Yarra River, downstream at Dights Falls.

A Committee of Councillors and Community Representatives from each municipality is to be established, to co-ordinate the review process.

An invitation is extended to Kew residents, who have an interest in the Yarra River area, to register for appointment to this committee.

The Committee will meet in the evenings, as required through the review process. Membership of the committee is voluntary.

All submissions and registrations of interest should be forwarded by Monday 23rd December, 1991 and addressed to the Chief Executive, City of Kew, PO Box 42, Kew.



Tims Bookshop

129 High St.,
KEW JUNCTION

OPEN 7 DAYS

- 853 5634
- 853 5434

LITTER CONTROL

The Bayside Councils' Association estimates that its member Councils spend more than two million dollars per year on clearing litter from bayside beaches. The Association believes that a considerable amount of rubbish is carried there with stormwater.

It is essential to minimise the amount of waste which enters the drainage system and thus reduce the impact on the Yarra River and the Bay. Residents are reminded not to use the drainage system for the disposal of waste/litter. If anyone requires information on the disposal of waste call the Engineering Department of Kew Council on 860 5272.

CONCERN FOR THE YARRA

'Yarra People' is a group recently formed to protect the Yarra and its immediate environs from ugly developments. The Yarra is one of the few outstanding natural features of Melbourne's landscape.

One of the aims of the group is to improve streamside environments and to quote the Minister for Conservation, Steve Crabb, '... to create one of the world's great metropolitan open space networks for our enjoyment and the benefit of future generations ...'

For more information please contact the president, Alan Porritt on 818 4498 or the secretary, Iris Nicolades on 819 1635.



Printed by:
Industrial Printing and Publicity Co. Ltd.
122 Dover Street, Richmond, 3121
Telephone: 428 2958

THE CHANGING STYLE OF KEW'S PARKS

Marlowe

As the tastes and activities of our communities have changed, over the years, so has the form of the local park. A generation ago the typical suburban park was a broad expanse of turf grass dotted with clumps and individual specimens of, usually, exotic trees. It was a wonderful place for active games and team sports.

Now city dwellers demand more from their parks and open areas; they want space for passive recreation, quiet places offering some respite from the busy activities of daily life. As a consequence of this general process our parks are gradually being renovated and replanted. The emphasis today is on shade trees and plantings designed to encourage local wildlife.

Kew's Parks and Gardens department is constantly experimenting with different combinations of native trees and shrubs. Paramount is a wish to avoid repetitive designs. The emphasis is on variety, to please the eye and fit the particular demands of each site. The street tree planting program uses mainly exotic trees, following the planting themes already established; this is in accordance with Council's Street Environment Policy. The severity of the built environment limits the range of trees suitable for street planting. Increasing air pollution and the spread of paving across the city mitigates the survival of all, but the hardiest of trees.

Away from the tough conditions of the streets, Kew's parks allow more varied plantings, and Council's Parks and Gardens department makes the most of these opportunities. Visitors to the parks will find many types of gum trees from across the continent, squat mallees and tall forest trees, along with different wattles, banksias and she-oaks. These trees establish a framework for improvements and additions, giving the shade and cover that helps smaller shrubs and trees thrive. Gradually the open lawns and clumps of trees are giving way to more natural scenes, ones that will encourage the local birds by re-establishing their preferred habitats.

Along the Yarra, especially behind the National Guide Dog



Outer Circle Linear Park.

Centre, the recent plantings have been exclusively of endemic local flora. The trees start from locally collected seed that is sown, germinated and grown on at the Council nursery; from sowing to planting takes about eight months.

In other areas, like the Outer Circle Linear Park, the ground has altered so drastically over the years that it is hopeless to expect the original vegetation to re-establish itself. Much of the land has been filled, and so the soil profiles, drainage patterns and ground water

conditions prevent a comprehensive renovation to pre-European conditions. Other native species, along with some of the local flora, are used.

Since 1987 each winter and spring has seen about five thousand trees and shrubs planted in the parks; this number does not include the street tree plantings and replacements. Anticipated future works will aim at increasing the number and diversity of smaller trees, shrubs and native grasses within Kew's parks.

Nursing Mothers' Association

Kew Branch — Diary Dates

Tuesday 17 December, 1991 — 'Picnic in the Park' from 11.30am — 1.30pm, Kellett Reserve, Fitzwilliam St; Kew (Melway 45 F8).

Tuesday 14 January, 1992 — ABC Breastfeeding, contact Fiona 859 9398.

Wednesday 22 January, 1992 — Morning Tea, contact Lynette 853 7918.

Thursday 30 January, 1992 — Garden party, contact Linda 861 5820.

CLOSING DATES DURING THE CHRISTMAS VACATION

MUNICIPAL OFFICES

The administrative offices, entrance via Charles Street, will be closed from 2pm, 24 December and the public holidays being; 25 December, 1991 — Christmas Day, 26 December, 1991 — Boxing Day and 1 January, 1992 — New Years Day. On all other days, during the holiday period, the offices will operate during the usual hours of 8.45am to 5pm with the cashier's office closing at 4.30pm.

WASTE DISPOSAL SERVICES

Domestic garbage will not be collected on 25 December, 1991 — Christmas Day.

Council's Depot, in Princess Street, will be closed on 25 December, 1991 — Christmas Day and 1 January, 1992 — New Year's Day.

The Heidelberg Transfer Station will be closed on 24 December, 1991, 25 December, 1991 — Christmas Day and 1 January, 1992 — New Year's Day.

KEW LIBRARY

The Kew Library will be closed on;

Monday 23rd December, 1991
Wednesday 25th December, 1991
Thursday 26th December, 1991
Sunday 29th December, 1991
Monday 30th December, 1991
Wednesday 1st January, 1992.

The 'after-hours' bookchute will be open on all the days which the library is closed. Normal hours will resume from Thursday 2nd January, 1992.

ART ORIGINALS PICTURE FRAMING

Willsmere Village 72 Willsmere Rd,
Kew. Ph. 853 6514

PICTURE FRAMING

*Quality Custom Picture Framing
If you have it, we can frame it!
What's more, no one can match our
prices!*

*We refuse to be beaten on price.
We sell original arts and crafts and
prints.*

We restore and copy photos.

We offer portrait photography.

10% discount with this advertisement.

MATERNAL & CHILD HEALTH CENTRES

All Centres are closed on the 25th; 26th. of December, 1991 and 1st. January, 1992. On Friday 27th. December and Monday 30th. December, 1991 the Strathalbyn Street Centre will be open. On Tuesday 31st. December, 1991 the Peel Street Centre will be open. However, an appointment should be made before attending on any of these three days.

Denmark St. Centre

Closed from Monday Dec. 23 for two weeks. Please use Peel Street and Strathalbyn Street Centres.

Re-opens Monday 6th. January, 1992.

Peel St. Centre

Closed from Tuesday 7th. January, 1992, for two weeks. Please use Denmark St. and Strathalbyn St. Centres.

Re-opens Tuesday 21st. January, 1992.

KEW CITIZENS' ADVICE BUREAU

The Kew Citizens' Advice Bureau will be closed from December 21st. to January 6th; 1992. Hours opening in January will be from January 6th; 10am — 1pm; Monday to Friday.

The bureau re-opens on the 5th. February, 1992, returning to the usual hours of 10am — 3pm; Monday through to Friday.

RATES REMINDER

Residents should have received their Rate Notices for the 1991/92 financial year. If you have any queries about rate charges, or you have not received a notice, please contact the Rate Office on 860 5247.

Property owners are reminded that the first municipal rate instalment must be received no later than 4pm on Tuesday 31st December, 1991. However, if payment is intended to be made by one total amount, then it must be received no later than 4pm on Friday 10th April, 1992.

Ratepayers should note that failure to pay any of the four instalments by the due dates, or late payment of the entire amount on 10th April, 1992, will cause interest to accrue at the prescribed rate of 16 per cent per annum from 10 December, 1991. The interest penalty is a mandatory charge under the Local Government Act.

Payments may be made at the Municipal Offices, from 8.45am to 4.30pm weekdays. Alternatively payments may be made at any bank. (Payment at any National Australia Bank will not incur a transfer fee.)

The first quarterly instalment payments, through banks, will only be accepted until 4pm on 31st December, 1991, whilst single total payments will only be accepted until 4pm on 10th April, 1992.

Property owners are also reminded to write to the Rate Collector notifying changes in property, ownership or occupancy. Failure to do so means an owner remains liable for all rates and charges on the property, until a notice of disposition has been received.

KEWRIOSITY DEADLINES

Residents and local community groups are invited to contribute to 'Kewriosity'. The next edition is in February and items must be submitted to the editor, Lisa Gaffney, City of Kew, Municipal Offices, Charles Street, Kew, 3101, before 17th January, 1992. The next newsletter should be delivered the weekend of 8th and 9th February, 1992.

Articles submitted before the deadline have the best chance of being included in each edition.

**THE CITY OF KEW COUNCILLORS
WISH EVERYONE A MERRY CHRISTMAS AND SAFE NEW YEAR**

PROSPECT WARD

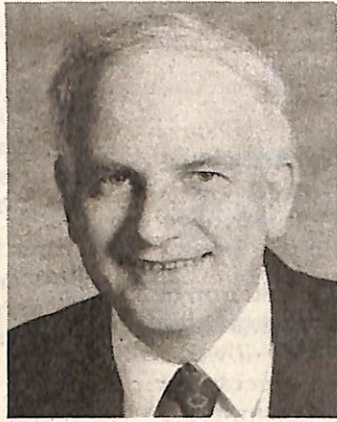
SACKVILLE WARD

STUDLEY PARK WARD

WILLSMERE WARD



Cr. Joan Lamb
18 Goldthorns Ave
East Kew
Ph: 817 5894 (H)



Cr. Paul Vallis
90 Sackville Street
Kew
Ph: 817 3522 (H)



Cr. John Murray
15 Gellibrand Street
Kew
Ph: 853 5500 (H)



Cr. Roger Streeton
142 Pakington Street
Kew
Ph: 862 1324 (H)



Cr. Michael Montalto
11 Fairway Drive
East Kew
Ph: 859 4660 (H)



Cr. Phyllis Hore
18 Pakington Street
Kew
853 5429 (H)



Cr. Jim Tutt
20 Foley Street
Kew
Ph: 853 6243 (H)



Cr. Daryl Oldaker (Mayor)
25 Grandview Tce.
Kew
853 9413 (H)



Cr. Allen Martin
24 Cole Ave.
East Kew
Ph: 859 3339 (H)



Cr. Gery Petrie
14 Valentine Ave.
Kew
Ph: 862 2852 (H)



Cr. Philip Slobom
41A Fernhurst Grove
Kew
Ph: 862 1535 (H)



Cr. Tom Indovino
21 Grandview Tce.
Kew
Ph: 853 7183 (H)

HOUSEHOLD GARBAGE COLLECTION

Kew Council provides a twice weekly collection of household refuse and a recyclables collection, on the first garbage day of each week, to every household in Kew.

Recyclable bottles and paper refuse are to be placed **beside the garbage bin, on the first garbage day of the week.** Bottles, including glass jars, PET plastic soft drink bottles and aluminium drink cans, may be placed, in a bottle bag (available from Council) or plastic shopping bags. All waste paper, including cardboard, newspapers, magazines and telephone books should be tightly bundled or placed securely in a cardboard box.

Residents may also deposit glass bottles, jars, aluminium cans, PET plastic bottles, paper, cardboard and old clothing at the recycling depot in Princess Street, Kew. The depot is open during the week from 8am to 3pm and weekends and public holidays from 10am to 2pm, not including Christmas Day, New Year's Day, Good Friday or Anzac Day.

It is extremely important that residents only put **normal, un-offensive household refuse in garbage bins.** It is of great concern that Council's garbage collectors have suffered injuries due to harmful material and inadequate containers. Please consider the following guidelines when you put your garbage out for collection.

Items not permitted:—

- liquid wastes, slops
- building materials
- excreta
- harmful substances, likely to injure or otherwise harm a person
- chemicals
- glass bottles
- trade waste
- garden waste (leaves, etc)
- hard rubbish
- bulk quantities of cardboard or paper

Items permitted, if contained in plastic bags or wrapped in paper as required and placed in a bin:—

- moist refuse
- dust, ashes, hair (wrapped in paper)
- broken glass (small quantities in paper)

- babies and sanitary napkins (wrapped and cleaned).

Types of Bins

To ensure proper and safe collection of domestic garbage it is essential that all rubbish is left for collection in an approved bin.

Bins should be galvanised iron or PVC and fitted with a proper lid, but please do not tie lids down as it makes it difficult to access the bins. Bins that leak are not appropriate containers.

There is no limit on the number of bins each resident can put out for collection, but there is a limit on the weight. Each bin must not be greater than 55 litres in capacity and when left for collection the weight must not exceed 16 kilograms per bin. A helpful guide is to ensure that the contents can be easily emptied when a bin is tipped. Rubbish not placed in a bin will not be collected.

Placement of Bins

Flats/Units:

Bins are to be placed on the naturestrip or footpath, next to the

fence for collection. When five or more bins are put out for collection they will be returned to the corral.

Corrals are to be maintained by owners in a clean and unobstructed manner.

Other Properties:

Bins are to be placed outside the property line on the naturestrip or footpath for collection. If no other option is possible, bins may be placed in a right of way, at the rear of a property. ROW is to be maintained in a safe condition.

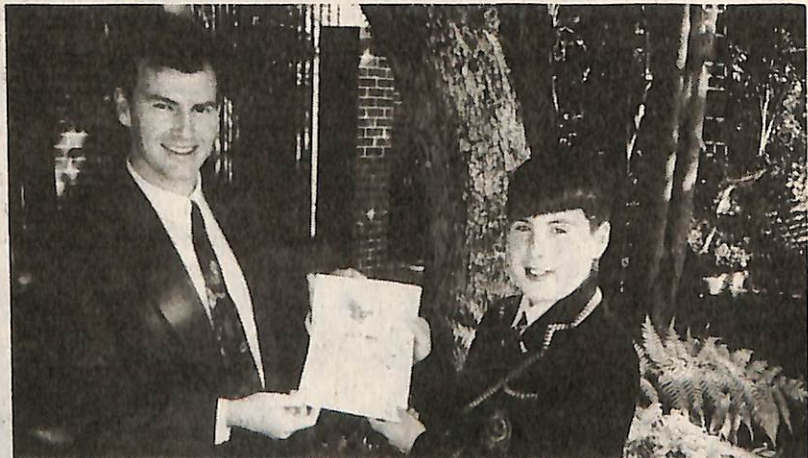
Problem Bins/Collections

Rubbish left out for collection not meeting the necessary requirements will have stickers placed which explain why the rubbish has not been collected.

If a bin is unserviceable, it will be emptied once then a sticker applied advising the resident of the need for replacement.

For enquiries about waste disposal and recycling ring the Engineering Services Department on 860 5272.

40 Hour Famine



The Victorian area manager for World Vision, David Furness, is pictured presenting a certificate to Carey Grammar year seven student, Michael Bentley, who raised \$180 — the largest amount in the school! The school raised \$4,218 from the 40 Hour Famine Appeal which was the third highest in Victoria.

Security Measures

Frequently, especially before going on holiday, people forget to perform simple crime prevention to minimise the chance of burglary or theft.

The following simple precautions are recommended by the Victorian Police to assist in safeguarding homes during vacation.

Maintain a 'lived in' appearance at the residence

- Have mail re-directed or held at the Post Office.
- Cancel all deliveries, newspapers, etc...
- Have a neighbour collect advertising and other material left in the letter box.
- Arrange to keep paths and driveways free of papers and other debris.
- Create an awareness amongst neighbours of your intended absence and request they be alert to suspicious persons or vehicles in proximity to your home and to advise the police immediately of any unusual circumstances.
- Advise the local police of your absence and address whilst on holidays.
- Do not leave keys concealed for others to use.
- Lock away garden tools, ladders and the like which may be used to gain entry.
- An automatic timing device can be used to turn on/off selected lights and radios.
- External floodlighting may be linked to a passive infra red detector which automatically activates lights when something enters the field of vision.
- Leave shades or blinds as normal. Closed blinds make an effective screen for a burglar.
- Do not leave notes advertising your absence. Request neighbours not to inform callers of your absence.



- Consider using the most secure room of the residence to store valuables. Upgrade door to solid core timber with four way locking system.
- Interior doors should be locked and keys removed to minimise the opportunity of movement.
- If valuables are locked under the residence ensure the access door is locked.
- Check locks are operating correctly.
- Before leaving remember to lock all doors and windows.
- In 22 per cent of domestic burglaries the offender gained entry via an unlocked door or window.
- Ensure locks are adequate. In many burglaries the offender enters via the window, walks to the front door, or rear door and opens it via a thumb twist, then removes property with ease.
- Windows can be made secure by the installation of window locks, grills, security film or external roller shutters.
- Glass panes of louvre windows should be made non-removable.
- Record serial numbers of appliances and locate inventory in secure place.
- Photograph, in color, valuable items.
- Engrave or mark valuable items with an identifying mark, eg,

driver's licence no. and the letter 'V' or your initials and date of birth.

- Turn down the volume on your telephone on the day you leave.
- Take time to ensure all windows, doors, out-buildings, garage and the access door to the residence are locked.

The Kew Police Station is situated next to the old post office in Kew junction, at 188 High Street, telephone: 853 8377.

The police emergency number is 11444.

'Crime Stoppers' telephone number is 865 2145 or 008 333 000 (STD toll free).

Kew Council has just agreed to sponsor 'Crime Stoppers' in the sum of \$250 which will help in the fight against crime.

SECURITY INSTALLED AT AN AFFORDABLE PRICE

No electronic frills - good solid window and door locks, movement activated lights.

LOCK UP & LIGHT UP FOR THE CHRISTMAS HOLIDAYS

Phone 853 6327
your local advisor for
a no-obligation quote

DON'T BE A CRIME STATISTIC

DOMESTIC & HOUSE SECURITY
24 Roger Street, Doncaster East.

Cinderella



Buttons (Xavier Sculley) tries to cheer up Cinderella (Karlle Gooding), by giving her a beautiful string of pearls which are cunningly disguised as a string of onions!

All the usual well-loved characters will be in this big, bright and colorful all-singing and all dancing pantomime. This delightful production will appeal to people of all ages, from toddlers to grandparents.

Performed in the Hartwell Uniting Church Hall, corner of Eddy Street and Halley Avenue, Hartwell

(between Toorak and Camberwell Roads), on 20th. December at 8pm and 21st & 22nd December at 2pm.

Tickets are \$9 adults, \$6 students & pensioners and \$22 family ticket (includes two adults & two children). Discounts are available for group bookings. Phone 885 2578 or 752 2161. On performance, for bookings, call the hall on 889 5006.

Classic Australian Theatre 'Dad & Dave'

The 'Fabulous Nobodys' will stage the classic Australian melodrama 'On Our Selection' at Kew Highschool, Community Theatre, for six performances only — from December 17th to 21st, 1991.

Set around the turn of the century, 'On Our Selection' is based on the classic stories of 'Dad and Dave' as adapted by Steele Rudd. It promises to be a great start to the Christmas celebrations. For bookings and enquiries please phone 874 5217.

Assistance for Aids

A volunteer group has been established to help care for people in Kew, Hawthorn and Richmond who are living with AIDS.

Volunteers are needed to help with cleaning, shopping, cooking and to offer emotional support and companionship. Day time transport and care is also urgently required. Training and on-going support is provided.

If you would like to find out more about how you can help please contact William Evans on 483 6700, or Ian Foote on 818 1426.

KEW BAND

Christmas time is always busy for the local 'Kew Band'. There was the end of year concert at Kew Highschool and the annual general meeting where the band's president, Mr Ian Mathers, was honoured for his 50 years of contribution. The finale of the season is always the 'Carols by Candlelight'.

To find out more about the 'Kew Band' please ring the secretary, Keith Callinan on 887 0630.

KEW PHOTO SHOP

1 Hour Quality Processing

ENLARGEMENTS

Up to 11" x 14"
NOW DONE ON SITE
(With this AD — 1/2 PRICE)

'Seasons Greetings
to all of Kew'

183 High Street
(corner Walpole Street)
Kew 3101
PHONE 853 5964
FAX 853 0837



KEW COTTAGES

In November this year 'Kew Cottages' had a service to celebrate the handing over and dedication of the 'Chapel of St. Luke'.

The Chief Executive of Kew Cottages, Max Jackson, said, 'This Chapel is not just for the residents of Kew Cottages, but also a place of quiet refuge for the Kew staff.' He also acknowledged the contribution of residents, the parents' association and staff of Kew Cottages.

Mr Jackson is also proud of 'Network Q' which is based at Kew Cottages and provides employment for intellectually disabled people.

'Network Q' provides many services and products at competitive rates. The team manager of 'Network Q', Fred Meurs, is keen for people to come and buy the wonderful items they make. There are many ideal Christmas gifts.

The ceramics section of 'Network Q' make designer tea pots (\$20-\$25), mugs (\$6), plates (\$12-\$14), platters (\$20), pasta/soup bowls (\$8), milk jugs (\$8), salad/fruit bowls (\$18), vases (\$19) and casserole dishes (\$20). There is also the most beautiful handmade paper and cards. The paper is screen printed and marbled paper costs \$1.40 per sheet. Packets of three sheets of paper, with matching cards cost \$3.50 per set. Large gift cards and Christmas cards are a \$1.20 each.

'Network Q' also performs a car cleaning service which costs \$12 and includes washing, polishing (including chrome work) and vacuum cleaning. They have organically grown vegetables, house cleaning services available, delicious food catering, real Christmas trees for sale, office services (collating), gardening services (mowing lawns, etc . . .) and fresh flowers at certain times of the year.

Visit 'Network Q' at Kew Cottages, between 9am — 5pm, on the corner of Princess Street and Wills Street, Kew. Turn right into the main entrance and follow the road down to the 'Hamer Centre'. Call the team manager, Fred Meurs, for more information on 860 1365.



Opening of Kew Cottages Chapel.



Artist, Brian Lench.

The Magic Eight at Kew Bowling Club

Recently a side consisting of Norm Roughly, David Southwell, Ian Sonnerman and Fred Hines scored the magic EIGHT and followed up next week by having a club record of 59-6, 'CONGRATULATIONS FELLOWS'.

You too can enjoy the thrills of the game. Contact the club on ph. 853 9650 at 14 Wellington Street, Kew, for further information.

Safety

Could you walk along the footpath outside your house with you eyes closed?

Would you find overhanging branches?

Would you find a vehicle parked across a driveway?

Would you find an upturned rubbish bin?

Would you find advertising signs, bikes and schoolbags outside shops?

These are just some of the hazards faced by blind and vision impaired people every day. The Association for the Blind need people to think about these types of obstacles and clear them away from the footpaths.

Bushwalkers



Boroondara Bushwalkers are keen to attract new members. The club arranges bushwalks every weekend, as well as skiing trips in winter months.

The club offers day walks every Sunday, overnight and weekend trips, sometimes these are base camps, other times pack carry. There are also Wednesday walks each month. The current program includes Keppel Falls at Marysville, Penny Royal Falls in the North Otways, Healsville Sanctuary, Iron Bark Circuit at Anglesea and an extended trip to Kosciusko over Christmas.

With over 150 members the club caters for both beginners and ad-



Members of 'Boroondara Bushwalkers' enjoying a snack in the ranges North of Briagalong in Gippsland.

vanced bushwalkers. Always keen to develop skills and enjoyment of the outdoors, the club offers navigation and bushcraft courses and invites guest speakers along to its monthly meetings.

Boroondara Bushwalkers meet on the third Wednesday of each month in rooms next to Kew Library and the club encourages visitors to join them. Phone Frances on 819 5239 for further information.

ROTARY CLUB OF KEW EAST

The Rotary Club of Kew East are seeking to establish a market to be held on the second Sunday of every month, in the carpark off Strathalbyn Street, Kew East. The market will commence in February, 1992. Interested stallholders please contact Mike Conos on 817 5689, or Richard Clark on 817 5287.



"Service above Self"

Members of the Rotary Club of Kew East and a keen netballer are pictured installing a basketball ring, off Grange Road, Kew. This is the fourth ring that the club has donated for the use of the community.



FAREWELL TO KEW DISTRICT GIRL GUIDES' LEADER

After 20 years of dedication to the Kew District Girl Guides, Mrs Elaine Stradwick, is leaving Kew to live in London.

Elaine Stradwick became involved with Girl Guides when she began as a leader of the 2nd Kew Brownie Pack in 1971. In July 1977 she became District Commissioner of Kew, then Division Commissioner in February 1982. Elaine retires as District Leader (Commissioner), a position she has held since October, 1989.

In 1991 she received the 'Banksia Award' which is given for service to Guiding in the local area. Elaine considers another highlight to have been her attendance at the 1st Australian Commissioners' Conference in Adelaide, 1989.

'The sharing is the most important part of Guiding. It is worthwhile for children and adults, as the rewards are many,' she said.

Elaine Stradwick was also a leader of the Extension Brownie Unit at Rossbourne House, Hawthorn for 'seven enjoyable years.' Kew District will indeed miss her experience and commitment to Guiding and her cheerful, friendly leadership.

If you are interested in Guiding please call the new District Leader, Mrs Glennis McDonald on 817 4386.



Previous Kew District Leader, Mrs Elaine Stradwick.

KEW
COMMUNITY
HOUSE



6 DERBY STREET, KEW, VIC. 3101
Telephone: 862 3126

The new Co-ordinator of Kew Community House is Mr John Julian. He has been Regional Co-ordinator of Specialist Child and Family Services in the westernport region.

John and the new committee, led by Robert Wright, aim to make the House, at 6 Derby Street, part of the lives of everyone in Kew.

If you have any ideas about community activities or concerns, talk to John or one of the many volunteers at the House.

Kew is a special suburb, with its long river frontage and beautiful parks and gardens. Community House is a place to develop Kew's character and help everyone to feel part of the community.

There may be people who are looking for company or are new to the area. Mothers with preschool children, older people, young or older unemployed, or just people who are looking for a new direction. Everyone is welcome at Kew Community House.

The House will be open over the holidays and all groups are encouraged to use Kew's Community House. It is hoped that the House will continue to be a starting point for all kinds of initiatives in Kew.

During December and January Kew Community House has a holiday program, with activities for children over ten years of age. Please note this is not a care program. Contact John on 862 3126 for more information.

If we took a holiday?

People planning holidays can increase their knowledge and enthusiasm for travel by reading the excellent travel guides held at Kew Library.

Travellers planning economical holidays may be interested in the Insight guides, Fodor guides or the Lonely Planet guides.

Maps of many areas can be consulted. The library also has Australian street directories and accommodation guides.

For people who enjoy 'armchair' travel there are many pictorial works on various countries.

Whether you are going away or staying home over the holiday season, the Kew Library Staff would like to take this opportunity to wish all borrowers a Merry Christmas and a happy and prosperous New Year.



KEW FESTIVAL CHARITY BALL AT 'RAHEEN'

The Kew Festival Charity Ball is to be held at the historic and beautiful 'Raheen', on Saturday 21st March, 1992. All proceeds will go to the Asthma and Arthritis Foundations which are locally based.

In support of the Kew Community and local charities, Mr and Mrs Richard Pratt, the owners of historic 'Raheen' have graciously provided the venue for the inaugural Charity Festival Ball.

This will be an unforgettable evening. Tell your friends about it and make up a table. Please don't delay as this will be a sell out. Tickets are \$70 per person which includes a delicious three course dinner with drinks, great entertainment and lucky prizes. Book with ticket secretaries Bromwyn Hayat on 819 3388, or Pam Mulcahy on 416 0948.

BOB STEWART of Kew

Men's Wear — Boy's Wear — College Wear — Footwear
201-207 HIGH STREET, KEW, VICTORIA, 3101
Phone: 853 8429

MONEY — SAVING CHRISTMAS SPECIALS

Woven Casual Shirts — Great Value M-XXOS . . . ~~\$16.95~~ **\$10.00**

Business Shirts Blue, Cream, White 38-42 . . . ~~\$15.95~~ **\$10.00**

Men's Shorts Strong Quality Size 80-100 . . . ~~\$15.95~~ **\$10.00**

Clearance of Knit Shirts M-XL . . . Only **\$5.00**

EXTENDED CHRISTMAS TRADING HOURS

OPEN EVERY THURSDAY AND FRIDAY NIGHT AND MONDAY 23rd TILL 9PM
OPEN SUNDAY 15th AND SUNDAY 22nd 12 NOON TILL 4PM