

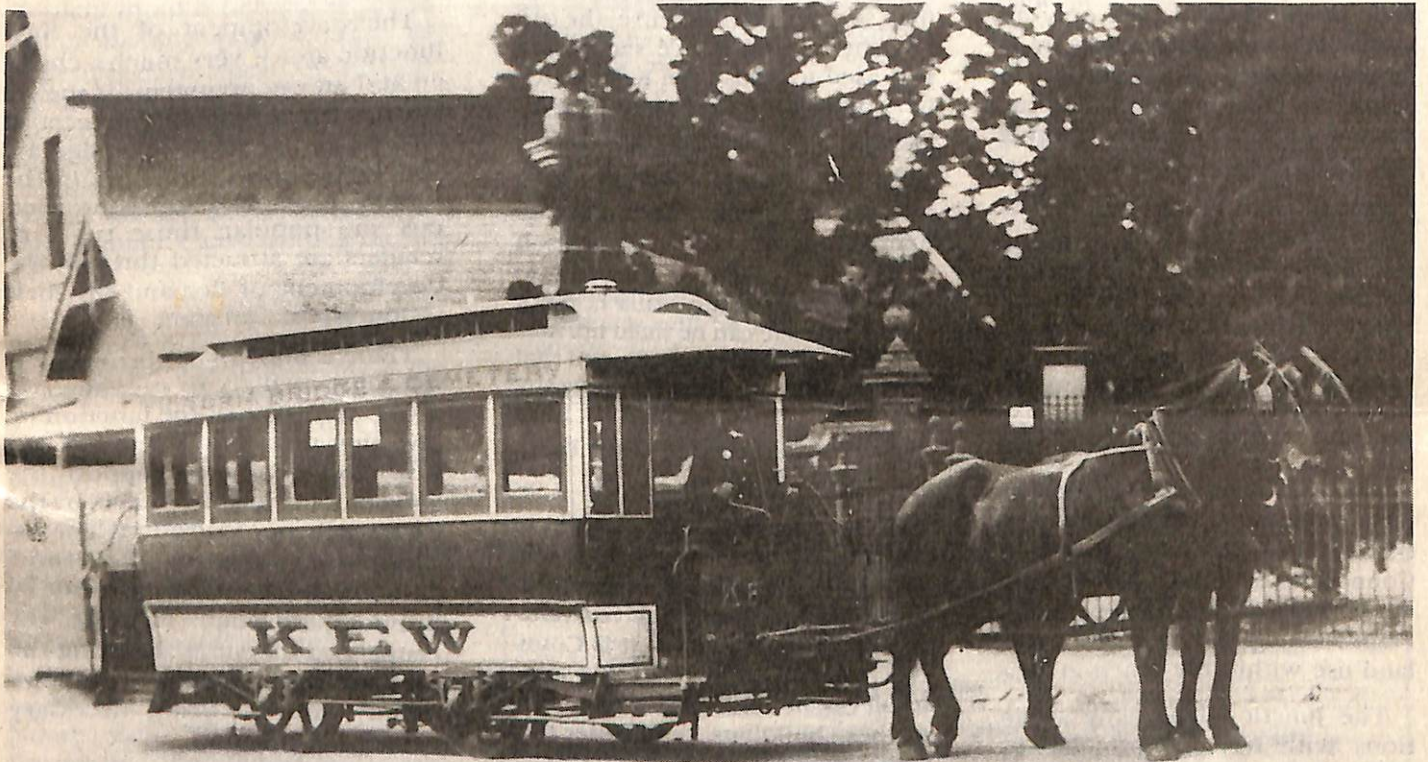
KEWRIOSITY

NOVEMBER 1991

City of Kew, Municipal Offices, Charles Street, Kew 3101. Telephone: 862 2466

THE HORSE TRAM RETURNS TO KEW

On Sunday 8th December, 1991, the Kew Tram Depot will be having its first ever Open Day, from 10am to 4.30pm.



To help celebrate the 75th anniversary of the completion of Kew Depot the citizens of Kew are invited to inspect the depot. There will be horse drawn tram rides (in the Depot), displays and vintage tram rides through Kew Junction Shopping Centre.

The 'Metropolitan Transit Band' will be playing in the afternoon and there will be a community market in the depot car park. For further information please call 429 9641.

PROFESSIONAL CLEANING SUPPLIES

Chemicals, Mops, Toilet paper, Vacuum cleaners, Window cleaning equipment, Polishing machines, Buckets, Brooms and Accessories

DRY CLEANING AND KEY CUTTING

Sales Service and Hire Domestic and Industrial

853 0177 Jolyon or Rosemarie

233 High Street, Kew 3101 — Best Prices in Melbourne — We Deliver

SUPER SPECIAL 1
CLOTHES
BASKETS

\$3 each or
2 for \$5

Present this Docket

SUPER SPECIAL 2
Supply and Instal
Kambrook Smoke
Alarm for only

\$19.95
(SD15)

(Kew Residents only)
Present this Docket

KEW JUNCTION

Historically it is arguable that the three most famous junctions in Melbourne are St. Kilda, Camberwell and Kew in that order. Whilst in practical terms, St. Kilda Junction no longer exists, Camberwell Junction has enjoyed much greater retail prosperity than Kew Junction.

There are numerous reasons for this, not the least being that Camberwell Junction is a designated retail centre. However the question that really has to be asked is why Kew Junction retail area only attracts 16% of the customers in its neighbourhood catchment area compared with the normal attraction rate of 35% for most other centres.

Part of the answer may be the close proximity of many people in the catchment area of the Glenferrie Road Hawthorn retail area, which raises a further question of whether Kew, as a community, should even be concerned about the future viability and prosperity of the Kew Junction retail area.

There are many reasons why the Kew community should be concerned and as a consequence, Council has over the past two years, developed a Kew Junction Strategy Plan which provides direction of land use within the Junction area.

The Junction has many attractions with its high prominence, proximity to the CBD and good access through major roads. Without a land use strategy, the composition of the Junction could easily change from a service centre to an office area with its associated problems of traffic congestion.

The derelict state of the old post office, court houses and police station continue to be a blight on the face of the Junction. This site is pivotal to much of the Junction's success but is tied up in a series of title ownerships with the post offices being owned by the Federal Government and the courthouse and police station being owned by the State Government.

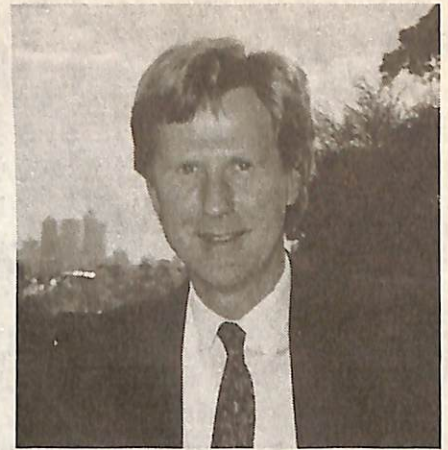
Both these levels of government have expressed their intention to sell these sites if and when alternative accommodation can be found. The old post office is still used for mail sorting and of course, the old courthouse and police station are still used to house the Kew Police in conditions which can at best be described as extremely poor.

Australia Post is actively seeking alternative accommodation for its mail sorting operations and thus it is hoped that within the near to medium term future, this component of the site can be freed up. Australia Post has advised Council that it has no intention of returning the post office to its original location due to the inadequacy of the facilities in that location.

Council has previously sought to ensure that both the Federal and State Governments act without further delay to enable the rejuvenation of these buildings. It is Council's belief that the sooner that some result can be achieved for the future of these buildings, the sooner that some viability of the retail centre can be assisted.

What then of the remainder of the Junction? A healthy retail centre not only brings life into a community but indirectly, makes that community prosper. As the retail area prospers, it adds wealth and value to the community through real estate values, provision of a good image for the area and increased services for the local community.

It is therefore in the interest of the entire Kew community to support its local retail area, just as the 'buy Australia' seeks to boost Australia's economy, a 'buy Kew' approach boosts the Kew economy.



The development of the Kew Junction area is very much a chicken and an egg argument. If the retail area is not supported, specialist retailers and 'upmarket' retailers are discouraged from investing in the centre. If the retail area is prosperous and popular, those types of retailers are attracted through the development of demand for their products.

There is both an opportunity for specialist retailers to capitalise on the current state of the junction by investing now and a need for the Kew community to support the good work being undertaken by the Kew Business Association. The Association is promoting the Centre, and community assistance can be provided through utilising the centre and therefore attracting the types of retailers which this community sees as being necessary within the Junction.

My comments about the current state of the Junction retail area are not merely based upon observations, but upon the statistical evidence that shows the centre is not operating at a level which it should. This fact should not be seen as someone else's problem but a problem for the entire community. It should also be seen as an opportunity to get the formula right by starting from the point which is not reactive to pressure from developers but pro-active to ensure that the right type of development is encouraged to achieve the right result which benefits the entire community.

MAYOR'S COMMENT

Most Kew residents will be aware of the work which has been undertaken by Council to develop a land use strategy plan for the Kew Junction. A decision regarding the implementation of the strategy for Kew Junction Commercial Centre will most probably be made in the New Year. The plan provides a framework for the future planning and development of the Centre. All comments on the plan were received by the 18 October, 1991 and the Commercial Area Strategy Committee will be considering these submissions during Council meetings later this month.

Local trader representation and resident input is helping in the decision making process and will hopefully ensure that the improvements to Kew Junction will reflect the ideas of the community. If anyone would like to know more about the Kew Junction Strategy Plan they should contact, Kew Council's Strategic Planner, Caroline Rollis on 860 5271.

Another proposal being considered by Council which will be assisted by resident comment, is the development of Council's land located on the corner of Kellett Grove and Willsmere Road, South of the Eastern Freeway.

Information about Council's proposal for this site was published in an earlier edition of *Keuriosity*. The proposal is to develop the site by building a tennis club and scout hall, which will provide facilities to enable the transfer of the existing North Kew Tennis Club from Grandview Terrace/Peel Street and the 1st Kew Scout Group from Disraeli and Childers Streets. Both these existing facilities require considerable maintenance and the new development will overcome this immediate need.

The proposed development provides the opportunity of rationalising Council's existing assets, as the land which the tennis club and scout group currently occupies is zoned as residential. The transfer of these facilities will enable the sale of this land and provide better utilisation of the Kellett Grove land, which due to its zoning, has very limited potential uses.

A public consultation program about the proposal will be conducted from the 11th to 22nd November, 1991. The plan will be on display in the library and foyer of the municipal offices and letter drops will be made to all people near the proposed development and existing facilities, inviting their comments.

In addition, the proposed development will be marked out on the site, so that interested people



can obtain an impression of the concept.

A Council Task Group which consists of Councillors and representatives from the tennis club and scout group, has been working on the feasibility of this proposal for some time.

If you would like some more information about the 'Kellett Willsmere Development' please contact the Deputy Director of Engineering, Neill Hocking, on 860 5234.

KEW PHOTO SHOP

1 HOUR Quality Processing

OTHER SPECIALTIES:

- Reprints or Enlargements
- Copyprints (off old and new)
- Prints from slides
- Passport or ID Photos

Also: Frames, Albums, Cameras & Accessories

183 High Street (Cnr Walpole St) Kew

853 5964



10% Discount WITH THIS COUPON

DIARY DATES FOR NOVEMBER

The Royal Botanic Gardens are particularly beautiful and free guided walks, at 10am and 11am, are conducted every day, except Monday and Saturday. Groups of six or more must book in advance. Enquiries and bookings ph. 650 5037.

11 Monday 7.30pm Neighbourhood Watch Meeting, area G176. AGM to elect an Area Co-ordinator and Treasurer, location Kew Primary School

13 Wednesday 2pm Representatives of professional agencies, community groups, service clubs and Kew residents are invited to a planning meeting for 'Senior Citizens' Week 1992'. The meeting will be held in the Committee Rooms, Municipal Offices, Charles Street, Kew. Entrance via north terrace, enquiries call Craig Kenny on 862 2466.

8pm Kew Historical Society meeting, library complex, no. three hall. Speakers: Professor Peter and Mrs Dione McIntyre. All welcome.

14 Thursday 8pm Nursing Mothers' Association, books and toys for children, enquiries call Fiona on 853 7821.

8pm Kew Garden Club, meeting in the Senior Citizens' Centre, High Street Kew. Guest speaker, Mr Wrixon talking on Werribee River. New members welcome, ph. 853 7057.

16 Saturday 10 — 1pm Willsmere Village Shopping Centre, Willsmere Road, Kew, presents a sausage sizzle, street stalls, musical entertainment and face painting for children. Enquiries ph. 853 6514.

17 Sunday 10am — 4pm Genazzano Fair, Cotham Road. 'Fun for all the family', have your photo taken with Father Christmas, ride the trackless train and enjoy the gourmet foods. There will be pony rides, spinning wheels, a giant Christmas stocking, a fairy stall and many more.

18 Monday 1.30pm The Royal Victorian Eye and Ear Hospital, Kew Auxiliary meeting in the no. three conference room, Kew Civic Chambers. To assist the hospital buy your Christmas cards at Ed Credit, 222 High Street, Kew. New members welcome, ph. 817 4671.

8pm The inaugural annual general meeting of the **Studley Park Association Inc.** Guest Speaker, the Chief Executive of the City of Kew, Malcolm Hutchinson, will talk on 'The future of Local Government and the implications for planning and budgeting in Kew.' The meeting will be held in the old library of the Kew Municipal Offices, opposite the current library, entrance is via Cotham Road. All residents of Kew are most welcome.

19 Tuesday 10am — noon, Nursing Mothers' Association, morning coffee. Contact Fiona on 853 7821.

6.30pm to 7.30pm Evening Immunization for all ages. Measles, Mumps and Rubella Immunizations will only be given between 6.30pm and 7pm. The Immunization Session will be conducted in Hall no. three, adjacent to the Municipal Library, enter via Cotham Road.

20 Wednesday 9am to 10.30am East Kew Maternal and Child Health Centre, **immunization** session, at 21 Strathalbyn Street, East Kew. Measles, Mumps and Rubella Immunizations will only be given between 9am & 10am.

10.30am — Kew Arthritis Self Help Group meet in Room three, Library complex, corner Charles Street and Cotham Road, Kew. Enquiries phone 853 7210.

11am Kew Legacy Widows' Club meeting at Kew RSL Hall, 63 Cotham Road, Kew. Annual 'bring & buy day', all Legacy widows welcome, enquiries 853 7049 or 859 1663.

11.30am Kew Community House, 6 Derby Street, Kew. 'Know your Community', speaker: Rev. Kevin Green, superintendent of the Wesley Central Mission will talk on 'changing lives — changing community'. Lunch will follow and everyone is welcome.

25 Monday 10am — 2.30pm The Country Women's Association of Victoria, craft session and luncheon. Uniting Church Hall, 142 Normanby Road, East Kew. Visitors and new members welcome.

1.30pm Kew (Daytime) Garden Club, end of year party, at the rear of Council offices, Cotham Road, Kew. Joy Hopper will demonstrate the art of Christmas wrapping. Enquiries 859 2977.

26 Tuesday 8pm The Kew Philharmonic Society presents the third subscription concert for 1991 by choir and orchestra at Holy Trinity Church, corner High and Pakington Streets. Christmas music is included in the program. Admission \$8, conc. \$5, enquiries 817 1881 or 817 3186.

30 Saturday 10am Kew Primary School's Christmas Fete. Solve all your Christmas woes. The school only holds a fete every three years and this one offers the very popular trash n'treasure, garden, handicraft, used and new clothes stalls, as well as hot foods, games and fun for all the family.

KEWRIOSITY DEADLINES

Residents and local community groups are invited to contribute to 'Kewriosity', space permitting. Items for the December edition must be submitted to the editor, Lisa Gaffney, City of Kew, Municipal Offices, Charles Street, Kew, 3101, before 22nd November, 1991. The views expressed in this newsletter are not necessarily those of Kew Council.

DIARY DATES FOR DECEMBER

1 Sunday 12 noon Lunch of the **Main Yarra Trail** between Princes Bridge in Melbourne and Westerfolds Park in Templestowe, linking 35km. of continuous, safe riverside pathway.

4 Wednesday 9am — 10.30am North Kew Maternal and Child Health Centre, 152 Peel Street, Kew, **immunization** session. Measles, Mumps and Rubella Immunizations will only be given between 9am and 10am.

2 Monday 12 noon The **Country Women's Association** of Victoria, Christmas luncheon at the Uniting Church Hall, 142 Normanby Road, East Kew.

6 Friday 10am — noon, **Nursing Mothers' Association**, morning coffee. Contact Fiona on 853 7821.

The **Country Women's Association** of Victoria — **Club Fair** — Lansell Road.

7 Saturday 8pm **Nursing Mothers' Association**, **END OF YEAR PARTY**, contact Fiona 853 7821.

8 Sunday Afternoon — Kew Tram Depot Open Day. Everyone welcome. Come and ride the old horse tram from 1914.

9 Monday 8pm **Nursing Mothers' Association**, Relaxation

techniques for mothers and children. Contact Fiona 853 7821.

10 — Tuesday 7.30pm **Neighbourhood Watch Meeting**, area **G64**, in the Meeting Room of the Kew Civic Centre, Charles Street. Final meeting if a new area coordinator is not elected.

11 Wednesday **Kew Legacy Widows' Club**, Christmas lunch outing to Hastings at Westernport by bus. Enquiries 853 7049 or 859 1663.

15 Sunday 8.30pm 'Carols by Candlelight', outside the Council Offices, corner Cotham Road and Charles Street. B.Y.O deck chairs and rugs.

THE LIONESS CLUB OF KEW

The Lioness Club of Kew was the first Lioness Club in Melbourne, when it was established in 1978. The club is for women who are interested in raising money for charities and generally helping the community.

They recently contributed a typewriter and refrigerator to the Kew Community House. The club is involved with the Kew Festival, the Senior Citizens Centre and various hospitals

Anyone interested in the club should ring Prue Molnar on 819 1561.

Invitation to Lawn Bowls

Auburn Heights Bowling Club at 397 Barkers Road, Kew, welcomes all new and experienced players. The club offers free coaching and bowls are supplied, so even if you've never played a game before come and have fun learning.

Please phone Neil Hookey on 882 2648 or Daphne King on 817 1639 for more information.

COUNCIL MEETING DATES

Nov. 12 Tuesday 7.30pm: Operations Committee
7.30pm: Planning and Development Committee
Nov. 19 Tuesday 7.30pm: General Purposes Committee
Nov. 26 Tuesday 7.30pm: General Purposes Committee
7.30pm: Council
Dec. 3 Tuesday 7.30pm: Operations Committee
7.30pm: Planning and Development Committee
Dec 10 Tuesday 7.30pm: General Purposes Committee

Meetings are held in the Committee Rooms and Council Chamber at the Municipal Offices. Entrance is via the main portico off Cotham Road.

All these meetings are open to the public. Copies of agendas are available for inspection, at the loans desk, at Kew library.

MARKET

Kew Community House organised a market day in October which proved to be a success. They wish to know if there is any interest

in having the market on a continuing basis

If interested please write to Chris Puyol at 59 Cobden Street, KEW, 3101.

Senior Citizens' Week 1992

Planning Meeting

Interested people are invited to attend a meeting to propose and consider options for the coordination of Senior Citizens' Week next year.

There has not been a coordinating committee for the past two years and community agencies have run programmes in isolation. Representatives of professional agencies, community groups and service clubs have been invited and we would ask community minded residents of Kew to become involved.

Date: November 13th, 1991

Time: 2.00 pm

Place: Committee Rooms, Municipal Offices, Charles Street, Kew
(enter via North Terrace)

ENQUIRIES: Craig Kenny

Telephone: 862 2466

LEADER SPORTS CHALLENGE CAMP

Tony Hall (Hawthorn) and Stewart Lowe (St. Kilda) are pictured teaching the finer points of football to participants of the recent Leader Sports Challenge Camp, held at Carey Grammar's sports complex at Bulleen.

The camp featured some of Australia's elite sporting stars, who coached children in a variety of sports. Children also had the opportunity to participate in activities such as art and craft, reading and gymnastics

The next Challenge Camp will be held in December and information can be obtained by ringing Leader Sports on 853 6023.



CITY OF KEW MUNICIPAL PUBLIC HEALTH PLAN STEERING COMMITTEE

Kew Council is to establish a Steering Committee for the development of a Municipal Public Health Plan. An invitation is extended to suitably qualified and/or interested people who live or work in Kew to register their interest in appointment to this Committee.

The Steering Committee will establish health priorities for Kew and suggest strategies and programs to attack identified health issues.

The Steering Committee is to comprise of seven people, including two General Practitioners practicing in the area and three representatives from the general community. The Committee will meet, as required, approximately six times per year.

Membership of the Committee is voluntary and appointments will be for a three year period. Council Staff will provide the necessary administrative support.

All submissions/registrations of interest should be forwarded by Friday 22 November, 1991. They should be marked 'Health Steering Committee' and addressed to the Chief Executive, City of Kew, PO Box 42, KEW, 3101.

*Malcolm Hutchinson
Chief Executive*

FAMILY MEDIATION SERVICE

at Marriage Guidance Victoria
46 Princess Street, Kew

assists separating, divorcing or divorced couples who wish to negotiate:

- temporary separation arrangements
- financial and property settlements
- parenting arrangements (including custody and access)

Fees are payable on a sliding scale according to gross income.

For further information/brochure, telephone Trish Adams: 853 5354.

NEW FACE

The new 'Leisure Access Worker' at Kew is Heather Crichton. Heather started work with Kew Council last September. Her role is to promote recreational activities for people in the community, with physical or intellectual disabilities. Heather is completing her Bachelor of Arts in disability studies at Victoria College.

'The people I deal with range in ages and the most challenging aspect, at the moment, is establishing the service gaps in the community. Linking people with disabilities into the community and gaining access to local recreation programs is really what my job is all about,' she said.

Heather has been working on a drama linking project and is proposing a sensory garden display which will be accessible to everyone. The sensory garden will cover the five senses; sight, hearing, smell, taste and touch. The sensory garden will probably occur early in the new year.

Heather works on Wednesday and Thursday from 9.30am — 3pm and may be contacted on 860 1301.



KRIG

KEW RECREATION AND INTEGRATION GROUP



New Way Theatre

The innovative drama programs for people with an intellectual disability, living at Kew Cottages, have developed within two years to form 'The New Way Theatre Company'. The first performance, with supporting acts, will be on Friday 27 November, 1991, at Carlingbush Library Theatre in Richmond (415 Church Street).

The opportunity to participate in the performing arts has encouraged members to develop self-expression and individuality. Some participants have expressed the need to further their experience, hopefully through established theatre companies, existing in the local Kew community and by participating in joint workshops.

Come and see the performance which begins at 7pm to 9pm and costs only \$2 adults and \$1 pensioners. Tickets will be sold at the door.



SAFE DISPOSAL OF CHEMICALS AROUND THE HOME

Have you ever wondered what to do with all those unwanted and out of date chemicals which you have accumulated? Chemicals stored around the home, especially in garages, garden sheds and laundries, may pose a risk to your health and the environment.

Chemicals such as pesticides, solvents, paints and oils, need special treatment to ensure safe disposal. The placement of such chemicals into sewer or stormwater drains threatens the environment and the health of those working with the drains. Chemicals dumped into systems may also corrode sewer lines and affect treatment processes.

The disposal of chemicals through the routine garbage collection system poses other problems. Chemicals may injure garbage collectors or tip workers and may enter and contaminate underground water supplies. The disposal of chemicals through incineration is not permitted within the City of Kew.

The following guide gives information on the safe disposal of chemicals. Disposal options are sewer, tip, recycling or chemical collections. The first three mentioned are self explanatory. Free chemical collections are specifically organised to deal with hazardous chemicals by Melbourne Waters. Details of the chemical collection day are as follows: Caulfield Council Depot, Manchester Grove, Glen-



huntly (rear of Caulfield Race Track). From 8 am to 5 pm on December 1, 1991. N.B. chemicals placed into the sewer should be with plenty of water.

DISPOSAL OPTIONS

Waste Type by location

Kitchen — Sewer — Ammonia based cleaners, drain cleaners, window cleaner; tip — (empty) aerosol cans; chemical collection — insect sprays, floor care products, furniture polish, metal polish with solvent, oven cleaner

Bathroom Sewer — alcohol base lotion (aftershave, perfumes, etc), bathroom and tile cleaners, depilatories, disinfectants, hair care products, toilet bowl cleaners; tip — nail polish and remover (solidified); chemical collection — pharmaceuticals (expired, unused).

Garage sewer — antifreeze, windshield washer solution; tip — car body repair products.

Chemical collection — auto transmission fluid, battery acid (battery), brake fluid, car wax with solvent, diesel fluid, fuel oil, petrol or 2-stroke fuel, kerosine, motor oils and sump oil, other oils, metal polish with solvent.

Recycling — Chemicals underlined may be recycled.

Workshop Sewer — glue (water based) rust remover with phosphoric acid; tip — aerosol cans (empty), paint latex; chemical collection — paint brush cleaner with solvent, cutting oil, glue (solvent based), paint (oil based), paint thinner or stripper, acetone, turpentine, varnish wood preservative.

Recycling — chemicals underlined.

Garden Chemical collection — fungicide, herbicide, insecticide, rat poison, weed killer; recycling — fertiliser

Other Chemical collection — Acids and alkalis, artists' paints, mediums, dry cleaning solvents, fibreglass resins (not mixed), mercury batteries, moth balls, old fire alarms and extinguishers, photographic chemicals, swimming pool chemicals; tip — shoe polish.

Recycling — Dry cleaning solvents. Source: Board of Works

Chemicals can be useful but have the potential to impact on your health and the environment. Proper use and safe disposal of household chemicals will assist in the prevention of accidents and damage from such chemicals.

For further information do not hesitate to telephone Council's Health Office on 860 5244 or Board of Works Advisory Service on 615 5547.

Holiday Programs in Kew

December 9-20

For boys and girls 6-11 years.

Full day programs (8 00am-6 00pm)

Sessional activities. Experienced, qualified leaders.



Contact:
Community Education
Methodist Ladies' College
Telephone 810 1412

24784

INSECTS

Marlowe

Kew's Parks and Gardens department deals with many of the same pests that plague the home gardener. Sawfly Larva and Lerps are two pests which are active around this time of year.

The caterpillar (larvae) of the Steel-Blue Sawfly cluster together during daylight on the smaller branches of gum trees. Often called 'spitfires', they wave their tails and exude a thick mustard-coloured fluid smelling of menthol when disturbed.

Remaining together during the day for protection, the caterpillars spread over the tree during the night, eating its soft new leaves. Young trees may lose most of their leaves, but they will recover if healthy. Large trees are damaged only slightly by the caterpillars.

Spraying the clusters with insecticide is generally impractical — trees must be small and accessible for the spray to be effective. Removing the small branch with the cluster attached is a better treatment.

Lerps, like the sawfly larva, damage our local gum trees. The insects suck the green chlorophyll from the leaves, causing brown patches. Very bad infestations will make the tree drop most of its leaves. Most healthy trees will recover, putting out a flush of summer growth once the insects are dormant. Unfortunately, repeated infestations may kill even large trees.

Lerp damage is most noticeable in spring. The River Red Gum, a common tree in Kew's parklands, is often afflicted.

Insecticides formulated to kill sap-sucking insects are of limited use; the lerps have done their damage before anyone notices. More importantly, careless spraying may injure those birds and insects that are the lerps' natural predators.

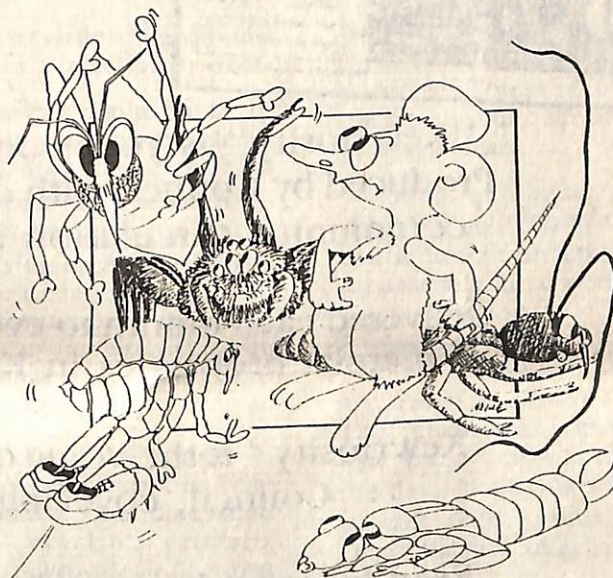
Kew's Superintendent of Parks and Gardens, Bruce Schroder, says

that sawfly larva and lerps are common along the Yarra River and in Hays Paddock. 'We very rarely, if ever, use insecticides in our parks. Spraying is the last resort. It's far better to encourage the natural predators and to help any affected trees

to recover by giving them extra fertilizer and water'.

Bruce recommends that householders do all they can to keep their trees growing strongly and to attract native birds into their gardens.

BOTHERED BY PESTS?



Improved and cheap pest control for Kew residents.

A far more extensive range of pest control treatment options is now available for Kew residents. Pest management fact sheets, safe pesticides and chemical use safety sheets assist in the treatment of pests.

If self management is not the preferred option, service through Council's contractor at an extremely reasonable rate may offer the solution. Services provided are;

- Treatment and eradication of European Wasp Nests — \$22 (reduced rates for pensioners)
- Initial treatment of rat/mice infestation — \$30
- treatment of other household pests — from \$125
- Management of possum nuisance — quotation required.



The City of Kew has arranged for its residents to be provided with the best possible service and assistance when they are subjected to pest infestation. Please contact Council's health office on 862 2466 for more information on pest control.

KEWRIOSITY

OCTOBER 1991

City of Kew, Municipal Offices, Charles Street, Kew 3101, Telephone: 862 2466

Upgrading of Harp Junction

Vic Roads, in consultation with Council, has prepared a design for the reconstruction of Harp Junction. The proposed work will significantly improve the safety and operating conditions of the High Street/Harp Road intersection.

- The proposed work includes:
 - realigning of High Street and reconstruction of the tram tracks.
 - development of a modal interchange for public transport, incorporating an off-road bus terminus facility, commuter parking area and public toilet.
 - construction of indicated bus bays and a tram safety zone in High Street and relocation of existing tram stops.
 - provision of a separate service road and the conversion of angle parking to parallel parking on the south side of High Street.
 - new pedestrian operated signals in High Street between Strathalbyn and Westbrook Streets.
- extension of the shared one-way bicycle path along the Outer Circle reservation.

It is expected that construction will commence in mid 1992 and that the works will be staged over a period of approximately three years.

A plan of the proposal is available at Council's Municipal Offices and Library. Enquiries can be directed to Council's Special Projects Engineer, Mr Russell Fairfax (phone 860-4252).

Council invites written submissions on the proposal. Comments will be received until Friday November 1, 1991.



Proposed roundabout at Valerie Street/Asquith Street/Belford Road

Vic Roads in consultation with Council has developed a proposal for the installation of a roundabout at the Valerie Street/Asquith Street/Belford Road intersection.

The roundabout will replace the current staggered T-intersection arrangements which has deficiencies with traffic movement and safety. The roundabout should significantly enhance safety and improve traffic flow between Valerie and Asquith Streets.

Construction of the roundabout is expected to commence during the first half of 1992.

A plan of the proposed roundabout is available at Council's Municipal Offices and Library. Enquiries can be directed to Council's Special Projects Engineer, Mr Russell Fairfax (phone 860-4252).

Council invites written submissions on the proposal. Comments will be received until Friday 1 November 1991.

INSIDE:

| | |
|---------------------------|----------|
| CHIEF EXECUTIVE'S COMMENT | p. 2 |
| MAYOR'S COMMENT | p. 3 |
| DIARY DATES OCT. NOV. | p. 4 & 5 |
| 'KEW YOUTH CARD' | p. 6 |
| 'KEW JUNCTION' | p. - |

KEWRIOSITY OCTOBER 1991 - Page 1

KEWRIOSITY

Advertising Rates

1/12 page — \$75

55 mm wide x 58 mm deep

1/8 page — \$150

88 mm wide x 58 mm deep

1/4 page — \$280

88 mm wide x 116 mm deep

1/2 page — \$560

180 mm wide x 116 mm deep

"Kewriosity" is your community newspaper. Produced by Council with contributions from the community. Circulation in excess of 11,500.

Delivered each month to every home and all commercial properties in Kew and Kew East.

"Kewriosity" is the voice of the community and Council, covering local news.

Read by most households in Kew ('Quantum Market Research', April, 1991).

Support the local newsheet and the community will support you.

If your business has an advertising requirement, complete the coupon and return it to Lisa Gaffney, Municipal Offices, Charles Street, Kew or phone Lisa on 860 5204.

NAME:.....

COMPANY/BUSINESS NAME:.....

ADDRESS:.....

PHONE:.....

No endorsement of services advertised is implied by the City of Kew.



CITY OF KEW

WASTE DISPOSAL SERVICES FOR 1991/92

Kew residents are advised that free tipping vouchers are not being distributed with rate notices this year however, ratepayers upon production of a current rate notice can obtain from the Kew Municipal Offices, Charles Street, Kew, two free tipping vouchers for use at the Heidelberg Refuse Transfer Station in Waterdale Road (near the corner of Banksia Street) Heidelberg.

The vouchers are valid for a trailer load or stationwagon load of rubbish.

In addition, upon production of proof of Kew residency at the Transfer Station residents are entitled to a discount on normal tipping fees at the transfer station as follows:

day of the week and bags should be left out for collection by 6 am.

For enquiries about the kerbside recycling collection please ring Council's Contractor, Austral Bottles on 429 3344. A recycling bag for bottles can be obtained by ringing Austral or can be collected from Council's Engineering Department. Recycling products can be left in plastic shopping bags if you don't have a recycling bag.

- Recycling Depot (located at Council's Works Depot in Princess Street near Chandler Highway). All recyclable products collected at kerbside collections plus old clothes, can be left at the

October and the collection for garden waste only will be in June/July. This is an increase in the number of collections from previous years.

Notices providing details of the actual collection dates will be distributed to each property approximately three weeks prior to each collection.

- A mulching service for prunings will be provided in February/March at Council's Depot. The actual date will be advertised three weeks in advance of the date. Residents will be able to take their prunings to the Depot for mulching on that day.
- A range of compost bins can be

| Load | Normal Fee | Fee for Kew Residents |
|-------------------------|------------|-----------------------|
| Boot | \$10.00 | \$ 8.00 |
| Trailer/stationwagon | \$20.00 | \$16.00 |
| Large — per cubic metre | \$20.00 | \$16.00 |

The following waste disposal services are also provided for City of Kew residents for 1991/92:

- Twice weekly kerbside collection of domestic garbage.
- Weekly kerbside collection of recyclable waste products being waste paper, cardboard, glass bottles, jars, aluminium drink cans and P.E.T. plastic soft drink bottles. The collection is made on your first garbage collection

Recycling Depot. The Depot is open weekdays, 8 am to 3 pm, weekends and public holidays, 10 am to 2 pm except on Christmas Day, New Years Day, Good Friday and Anzac Day.

- Three kerbside garden waste collections during the year, two of which will include the collection of other types of hard rubbish. The two which will include other types of hard rubbish will be conducted around April and

purchased from Council at very attractive prices ranging from \$25.00 to \$45.00 depending upon size and type of bin.

Details about any of these services can be obtained by telephoning Council's Engineering Services Department on 860 5272.

Malcolm Hutchinson
Chief Executive

NEW MUM PRESENTATION

St. George's Hospital has been providing care to new mothers and their babies for many generations of Kew families, since the first babies born here made their arrival in 1925. The Midwifery Department now consists of five delivery suites and 36 beds.

The staff at St. George's, many of whom are local residents, adopt a flexible approach to childbirth. The opening of a family birthing room in July last year has assisted with the changing requirements of expectant mothers.

The Nursing Mothers' Association offers education and support to breastfeeding women and their families. Call Fiona on 853 7821 to find out about the Kew branch of the NMAA.



Mrs Helen Page-Wood with three day old baby Rebecca, being presented with a gift from the Victorian Nursing Mothers' Association representing, Mrs Fiona Reynolds and the Midwifery Co-ordinator, Mrs Carol Sparkes.

KEW AUXILIARY ROYAL WOMEN'S HOSPITAL

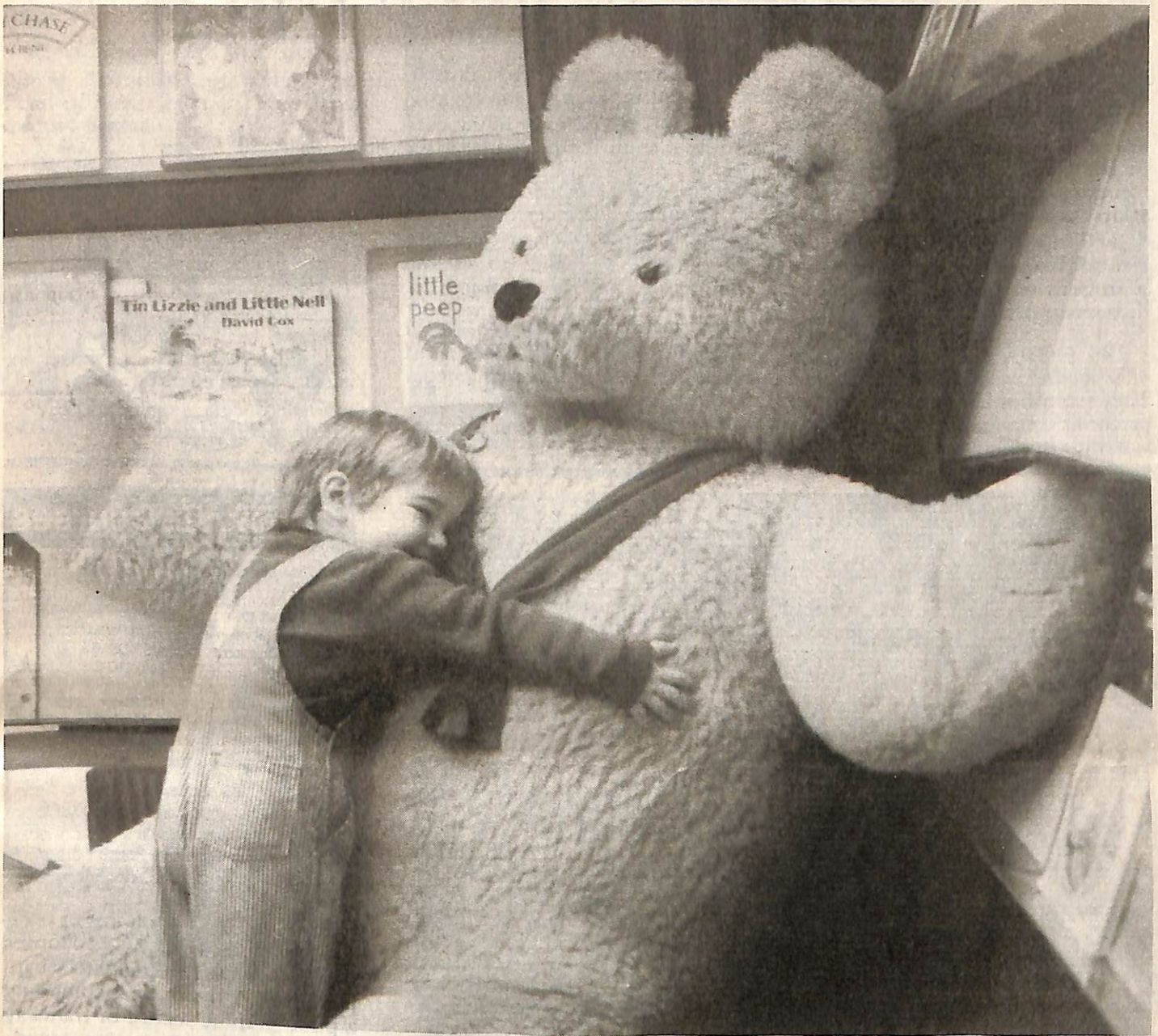
Kew Auxiliary is a small working group of dedicated people who raise money to buy equipment for the Royal Women's Hospital.

Money raised mainly comes from stalls and raffles. This year \$1,200 was raised to buy a fiberoptic light cable.

The Mayoress of Kew, Mrs Patricia Oldaker, joined the members of the auxiliary at the Royal Women's Hospital for the endowing of the light cable, in honour of the president of the auxiliary, Mrs Dietrich.

Anyone interested in joining or helping with donations please contact Mrs Dietrich on 861 6059.





L. Bear

Meet our most popular Staff member. Who's yellow, six ft. tall, six ft. wide around the middle and enjoys cuddles and meeting children?

Youngsters who regularly visit Kew Library will have no trouble guessing. It's Library Bear!

Library Bear arrived at Kew Library on July 18th, 1977 and soon settled into the Children's section of the library.

He is one of the longest serving members of the library staff and has seen many changes over the years.

Through them all, he has kept his benign expression. He still offers his comfy lap to all those that visit and he continues to help children select their books and encourages them to form good reading habits.

If your child has not met Library Bear, drop into the library and introduce each other. You don't need to be a member of the library, but applications for membership are

available from the loans desk and membership is free! If you show proof of your residential address, you can borrow books on the day you join.

Library Bear hosts regular story-times, with the help of other staff and special school holiday programs throughout the year.

He is eagerly awaiting your visit!

ARTHRITIS SELF HELP

The Kew Arthritis Self Help Group meets on the third Wednesday of every month (February to November), at 10.30 am in hall three of the Kew Civic Centre. It is one of many Self Help Groups throughout Victoria affiliated with the Arthritis Foundation. The aim is for members to give support and understanding.

The meetings are arranged to help educate people about arthritis. They learn how to cope with the problems encountered with the suffering from one or more of the

many types of rheumatic disease. Guest speakers, with information and assistance to make living easier, are part of the program.

Outings for 'homebound' arthritic people is a project of the Kew Group, whereby they are transported from their homes to various venues for lunch or afternoon tea.

Information and literature, as well as books, cassette tapes, videos and pamphlets are available to members from the Arthritis Foundation, located in Royal Talbot Grounds, Yarra Boulevard, Kew.



MURAL

Local artist, Bill Wood, recently completed this large mural in the comfort of his lounge room flat, on Studley Park Road.

The mural is five ft. in height and over thirty ft. in length. It depicts

a bar scene and was made for a restaurant.

Bill is a freelance artist who enjoys the challenge of a variety of mediums and subject matter, most notably oil paintings, the human figure and landscapes.

Computer Courses

December 2-18
9 30am -4 00pm

| | |
|--------------------|---------------------|
| Apple Macintosh | MS Word for Windows |
| MS Words Version 2 | Word Perfect v5.1 |
| MS Word Version 4 | MS DOS v3.3 |
| IBM | Lotus 1-2-3 |
| Keyboarding | MS Excel v3 |
| Introduction to | MS Powerpoint for |
| Microcomputers | Windows |
| MS Works Version 2 | Pagemaker |

Course fee: \$90 00 per day

For booking details

Community Education Methodist Ladies' College
207 Barkers Road Kew 3101 Ph: 810 1412/810 1426

OLD TRAMS

If anyone has old photos or post-cards of trams which they no longer need, Mr B.A. Silcove would be happy to receive them. He is compiling a photographic record of tramway systems. All photos/postcards should be sent to 72 Fitzwilliam Street, Kew, 3101

ART ORIGINALS ARTS & CRAFTS GALLERY

Willsmere Village, 72 Willsmere Rd,
Kew

WE SPECIALISE IN QUALITY
PICTURE FRAMING AND REFUSE
TO BE BEATEN ON PRICE

WE OFFER WEDDING PHOTOGRAPHY
WE COPY PHOTOS
WE RESTORE OLD AND DAMAGED PHOTOS

PHOTOS — \$6.99 24 EXP.

SPECIAL PORTRAITS
20 x 30" — \$99

ph. 853 6514

10% discount with this advertisement

KEW INFO YOUTH

Pictured are Year 10 MLC students Quynh Tran and Christina Hajdu, in front of Kew Council's 'Kew Info Youth' display.

The display provides a huge range of information for young people, covering health, career, educational and crisis information.

The 'Kew Info Youth' board is currently on display in Kew Library and it is available to all local schools.

For more information contact Council's Youth Development Officer, Kate Laing, on 860 5221.



LOCAL ARTIST

'I think I was born an artist.'

Resident of 'Hamer Court Hostel', Mrs Mary Macqueen, has recently completed an exhibition of cows and roosters, at 'Nodrum Gallery', Richmond.

Mrs Macqueen will be 80 years of age next January and has been a resident of Kew for most of her life.

She now resides at Hamer Court Hostel which is a major initiative of the Kew City Council to provide for the needs of aged and disabled residents.



Golden Putter Golf

The Studley Park Golf Course has recently been upgraded and is developing as a very popular course for local golfers.

The course in Walmer Street, Kew, is set in a beautiful bushland setting with magnificent views across the river to the city.

It is a compact par 3 course with nine interesting holes and is ideal for older adults and those wishing to improve their short game.

And it's inexpensive — \$5 per round.

The Yarra Bend Park Trust has introduced a package called 'Golden Putter Golf' which offers complimentary green fees, tea or coffee at the course cafe, regular competitions, a complimentary golf clinic, and social golf.

Enquire on 861 8773 about Golden Putter Golf — and join in at Studley Park Golf Course. Kew seniors are especially welcome on weekdays.



**CITY OF KEW
RESIDENTIAL POLICIES
REVIEW COMMITTEE**



The Kew City Council is to undertake a review of residential policies for the municipality.

A Committee of Council is to be established, comprising of Councilors and interested community representatives, to coordinate the review process.

An invitation is extended to persons who reside in Kew and who have an interest in the residential development of Kew, to register their interest in appointment to this Committee.

The Committee seeks four community representatives. Expertise or qualification in one or more of the following professions, Urban Planning, Landscaping, Architecture, Housing or Real Estate would be an advantage.

The Committee will meet in the evenings, as required through the review process, approximately eight to twelve times. Membership of the Committee is voluntary. Council staff will provide the necessary administrative support.

All submissions and registration of interest should be forwarded by Friday 22 November, 1991 and addressed to the Chief Executive, City of Kew, PO Box 42, KEW, 3101.

*Malcolm Hutchinson
Chief Executive*

APOLOGY

Did you see this?

'Kew Community House Activities. Kids! Create a crazy hat...'

The Committee of Management of Kew Community House sincerely regret if anyone was disappointed or inconvenienced because this class did not take place. As the House received no enquiries or enrolments it was considered cancelled, but apparently some parents and children turned up for the first class. There is no House Coordinator so the situation at present is not usual or ideal. A new coordinator is expected to be appointed shortly



Printed by:
Industrial Printing and Publicity Co. Ltd.
122 Dover Street, Richmond, 3121
Telephone: 428 2958

ONLY SIX WEEKS TO CHRISTMAS

• 3-Button Front
Machine Washable
Polo Shirts
M-XXL **ONLY \$8.95**

• 'Pelaco' and 'Van Heusen'
Business Shirts
Long and Short Sleeves
~~—\$29.95—~~
Reduced to **\$20.00**

• Business Shirts
A Great Gift
Short and Long Sleeves
All Sizes **\$12.95**

• Genuine 'Aertex'
All Cotton — Casual Shirts
An Appreciated Gift
~~—\$32.95—~~
ONLY \$25.00

• Men's Tailored Shorts
4 Pockets — All Cotton
Terrific Value
ONLY \$12.95

• All Cotton —
Long and Short Sleeve
Towelling Dressing Gowns
A Different Present **\$30.00**

FOR THESE AND LOTS MORE BARGAINS
ALL INDIVIDUALLY GIFT-WRAPPED, FREE

COME TO:

BOB STEWART
of Kew

Men's Wear — Boy's Wear — College Wear — Footwear
201-207 HIGH STREET, KEW, VICTORIA, 3101
Phone: 853 8429