

KEWRIOSITY

OCTOBER 1991

City of Kew, Municipal Offices, Charles Street, Kew 3101. Telephone: 862 2466

Upgrading of Harp Junction

Vic Roads, in consultation with Council, has prepared a design for the reconstruction of Harp Junction. The proposed work will significantly improve the safety and operating conditions of the High Street/Harp Road intersection.

The proposed work includes:

- realignment of High Street and reconstruction of the tram tracks.
 - development of a modal interchange for public transport, incorporating an off-road bus terminus facility, commuter parking area and public toilet.
 - construction of indented bus bays and a tram safety zone in High Street and relocation of existing tram stops.
 - provision of a separate service road and the conversion of angle parking to parallel parking on the south side of High Street.
 - new pedestrian operated signals in High Street between Strathalbyn and Westbrook Streets.
- extension of the shared footway/bicycle path along the Outer Circle reservation.

It is expected that construction will commence in mid 1992 and that the works will be staged over a period of approximately three years.

A plan of the proposal is available at Council's Municipal Offices and Library. Enquiries can be directed to Council's Special Projects Engineer, Mr Russell Fairlie (phone 860-5232).

Council invites written submissions on the proposal. Comments will be received until Friday November 1, 1991.

Proposed roundabout at Valerie Street/Asquith Street/Belford Road

Vic Roads in consultation with Council has developed a proposal for the installation of a roundabout at the Valerie Street/Asquith Street/Belford Road intersection.

The roundabout will replace the current staggered T-intersection arrangement which has deficiencies with traffic movement and safety. The roundabout should significantly enhance safety and improve traffic flow between Valerie and Asquith Streets.

Construction of the roundabout is expected to commence during the first half of 1992.

A plan of the proposed roundabout is available at Council's Municipal Offices and Library. Enquiries can be directed to Council's Special Projects Engineer, Mr Russell Fairlie (phone 860-5232).

Council invites written submissions on the proposal. Comments will be received until Friday 1 November, 1991.



INSIDE:

CHIEF EXECUTIVE'S COMMENT	p. 2
MAYOR'S COMMENT	p. 3
DIARY DATES OCT./NOV.	p. 4 & 5
'KEW YOUTH CARD'	p. 6
'KEW JUNCTION'	p. 7

Rates and charges for 1991/92

At a special Council meeting held on Monday 30 September, 1991, Council adopted its Budget for 1991/92.

The budget adopted by Council requires an increase in property rates of 1.0% and an increase of \$59.50 in the Waste Service Charge. These increases provide an aggregate increase in Rates and charges revenue to Council of 7.7%, with no reduction in current service levels.

This increase compares favourably with the levels of increases being adopted by most other Councils, especially considering that Kew has a level of rating which is amongst the lowest in Victoria.

In addition, Council is considering the progressive reduction in the level of minimum rates over the next three years. Minimum rates are the amounts determined by Council as the minimum rate which should be paid by each property, regardless of its valuation.

From October, 1992, minimum rates must be phased out in accordance with the *Local Government Act 1989*. At that time, Councils will be able to follow through the philosophy of a minimum charge for services by applying a "Municipal Charge".

The difference will be however, that all properties will be charged with that standard "Municipal Charge". That is, regardless of the valuation of a property, all rate notices will comprise three separate charges being: a rate (calculated on the property's valuation); a municipal charge and a waste services charge.

One of the reasons why Kew introduced a garbage charge in 1990/91 was to provide a smoother transition to this new approach. In 1990/91, the Garbage Charge of \$44.30, was calculated on the basis of the costs of garbage disposal (not including collection), hard rubbish collections and provision of recycling services.

This year, the Waste Services charge has been calculated on the basis of including all components of the provision of waste services in the charge, thus the reason for the increase by \$59.50 per annum to \$103.80 per annum. This represents a cost of less than \$2.00 per week. The waste services included in the charge are collection and disposal of household rubbish through the twice weekly rubbish collection, the weekly collection of waste products for recycling, access for Kew residents to the Heidelberg Transfer Station and the Hard Rubbish/Garden Waste kerbside collections.

This is another important philosophy which has influenced Council to take this approach of isolating the cost of waste services,



being the ability of ratepayers to influence the level of that charge through their waste disposal practices. As more waste products are recycled, the cost of disposal in the land fill rubbish tip will decrease, whilst the revenue obtained through sale of recycled materials will increase.

By isolating the charge, the benefits of new practices will be evident in dollar terms of all ratepayers and hopefully encourage everyone to participate. That should be a result which benefits everyone.

CROQUET — NEW SEASON STARTS

Councillor Roger Streeton used a borrowed mallet to put a ball through a hoop, officially to open Kew Croquet Club's summer season — and missed!

Croquet is an outdoors pastime for people of all ages. It looks simple and for some players it is. But not for the average croquet fanatic, who finds that every game played offers personal challenges different to the one before and for the one to come.

To see why the sport is so fascinating and why it is becoming one of the most popular pastimes in California — why not drop in to Victoria Park when a group is playing to watch what happens?

You will be welcome. If you are interested, equipment may be borrowed and tuition is available. Yearly club fees are very reasonable.

Mrs Connie Perry (817 3950) will be pleased to get a phone call from anyone interested in learning how to play what is, without doubt, a game which offers great entertainment without being too physically demanding.

KEW BAND

Congratulations to Kew's local band which recently competed at the Royal South St. Society Centenary and gained first place in the "A" grade brass band championships.

Special mention should be made of band soloist, Jack Kelly, who won three sections in solo events. Any enquiries regarding the winning band should be directed to the secretary, Keith Callinan on 887 0630.

Council's Budget for 1991/92

Following a number of meetings and intense debate, Council has adopted a Budget for 1991/92 which provides for a continuation of Council services at current levels.

I am aware that some residents do not believe that the current level of services are adequate, however with the current state of the economy, it is unrealistic to consider providing anything else except that which is seen as essential for the community.

The Budget adopted by Council requires an increase in the General Rate of 1.0% and an increase in the Waste services charge of \$59.50 per annum. Together, this represents an aggregate increase of 7.7%. I would have preferred this aggregate percentage to be less, in recognition of the difficulties that some of our ratepayers are facing as a result of the economy, but this is not possible if Council is to continue to provide its current range of services.

At a time when the economy is depressed, many of our services are relied upon to a greater extent than normal, thus to discontinue those services could create greater hardship for our residents.

Apart from normal increases in cost of living, there are four other major influences on Council's Budget being:

Increases in the cost of labour: Local government is still a labour intensive industry. Anticipated increases in labour costs over the next twelve months has contributed to the budget increase, although Kew is in a reasonable situation having far fewer employees than most similar sized Councils.

Continuing reductions in Government funding: We are all aware of the current financial situation of our State Government. This is having its affect upon local government through significant decreases in funding for specific services, as the State Government attempts to prune back expenditure.

Continuing devolution of responsibility for the provision of services, from the other levels of government to local government: Much has been made of the reductions in expenditure being achieved by the state and federal governments, however a great part of those reductions have been achieved through local government being required to provide and fund services which were previously the responsibility of those governments.

Continuing building slump: Building permits and fees together with the contribution made to the municipality's rate base through major re-development of properties, contribute significantly to Council's revenue base. The continuation of the slump in the building industry has therefore had an affect on Council's Budget.

In determining the waste services charge for 1991/92, Council decided to isolate the full costs of the provision of those services from the general rate and show it as a separate charge. The rationale for that decision is given in our Chief Executive's column in this edition of Kewriosity.

In doing so however, Council also took into account its request to its Waste Management Committee (of which I am a member), to immediately examine five options for the future of the domestic garbage service being to either:

1. Continue with the existing twice weekly collection with standard bins; or
2. Continue with the existing twice weekly collection with standard bins, but include the limited collection of garden waste in the second collection each week; or
3. Provide a weekly garbage collec-



tion with 120 litre wheeled garbage bins; or

4. Provide a weekly garbage collection with 120 litre wheeled garbage bins and with 240 litre bins being available at an extra charge; or
5. Provide a weekly garbage collection with 240 litre wheeled garbage bins.

It is expected that a final decision on one of the these options will be made in early 1992, with implementation either later that year or early 1993. The Waste Management Committee has already recommended that subject to costs, the recycling component of the waste service should be based on the use of either an 80 litre or a 120 litre mobile garbage bin.

A lot of work has gone into forming Council's 1991/92 budget, which I believe has produced a result which provides for our community's immediate needs whilst recognising what will be needed in the medium term future.

Announcing the Opening of
**ART ORIGINALS ARTS
 & CRAFTS GALLERY**
 Willsmere Village, 72 Willsmere Rd,
 Kew
 WE SPECIALISE IN QUALITY
 PICTURE FRAMING AND REFUSE
 TO BE BEATEN ON PRICE.
 We offer *Wedding Photography*
 We copy photos. We restore old and damaged
 photos.
PHOTOS — \$6.99 24 EXP.
 ★ We offer a free pick-up and delivery
 service ★
ph. 853 6514
15% discount with this advertisement.

DIARY DATES FOR OCTOBER

12 9.30am — 4.30pm *Spring Fair*, at St. Peter Claver Convent Hall, 154 Cotham Road, Kew. Proceeds to the missions, enquiries: 817 3715.

Exhibition of Paintings and Ceramics for the month of October, by Peter Hales at Art Originals Gallery, 72 Willsmere Road, Kew. Ph. 853 6514.

15 4.00 — 5.30pm Kew Community House, 8 Derby Street, Kew. Papier Mache Hats and Mask Making for Primary School Aged Children. This fun course runs for five weeks (excluding Cup Day) and the cost of \$30 includes materials.

Enquiries and enrolments contact Kew Community House on 862 3126.

16 9.00 — 10.30am Immunization at the East Kew Maternal and Child Health Care Centre, 21 Strathalbyn Street, East Kew.

10am Nursing Mothers' Association, Morning Coffee. New members welcome, contact Ruth on 859 6478.

10.30am Kew Arthritis Self Help Meeting, in room three of the library complex, cnr. Charles Street and Cotham Road, Kew. Mrs Lesley Mitchell of Knights Pharmacy will talk on "Independent Living Equipment". Contact 862 1409.

11am Kew Legacy Widows, monthly meeting at Kew RSL Hall, 63 Cotham Road, Kew. Speaker from the Australian Conservation Foundation, Barbara Lord, will talk about her new book, "The Green Cleaner". All Legacy widows welcome, ph. 853 7049 or 859 1663.

11.30am Kew Community House, 6 Derby Street, Kew. Speaker from Open Family Box Hill, lunch at \$2 will follow talk. All welcome, enquiries 862 3126.

7.45pm Camberwell Film Society presents "Der Fliieger" — Exploring the Restless Earth — Dinosaur. Contact Joan on 808 6299.

18 Comments from residents on the Kew Junction Commercial Centre Strategy Plan should be made by this date. The reports are available at the Planning Department in the Municipal Offices or at Kew Library for inspection. Any queries contact Strategic Planner, Caroline Rollis on 860 5271.

19 9am — 1.30pm *St. Paul's Strawberry Fair*, corner Windella Avenue and Hale Street, Kew. Stalls include gourmet items, cakes, handicrafts, plants, books, trash and treasure, plus activities and games. Of course there will be strawberries and cream.

10am *Karana Fete*, 55 Walpole Street, Kew. Devonshire Tea and a sausage sizzle lunch will be available and stalls will include cakes, jams, craft and fancy goods, crockery, jewellery, material remnants, sweets, books and trash and treasure.

10am — 3pm *Mini Fete* by the Kew Auxiliary of the Eye and Ear Royal Victorian Hospital, 159 Peel Street, Kew. Devonshire Tea, plants and cakes will be available.

8.15pm Camberwell Music Society's final concert for 1991, at 552 Burke Road, Camberwell Junction. Tickets available at the door, cost \$14 or \$8 concession, enquiries call Helen Barnard on 822 3156.

20 The National Heart Foundation Doorknock Appeal.

9am — 4pm *Sunday Market* at Fenton Avenue carpark, Kew Junction. Organised by Kew Community House for charity, so come along and support the community. Over 80 stalls, offering something for everyone.

2pm-5pm "Friends of Kew Library" Book Sale in the foyer of Kew Library.

21 Free Heritage Advisory Service provided to Kew residents, organised by Kew Council. Consultant, Bryce Raworth available for appointment ph. 860 5250.

1.30pm The Royal Victorian Eye and Ear Hospital, Kew Auxiliary, meeting in the no. three Conference Room, Kew Civic Chambers. New members welcome, ph. 817 4671.

1.30pm Kew (Daytime) Garden Club, meets at the rear of City Hall, Cotham Road, Kew. Heloise Date will speak about African Violets, enquiries 859 2977.

22 8pm Sir Rupert Hamer, former Premier of Victoria and National President of the 'Save the Children Fund', will speak on the University of Melbourne's School of Early Childhood Studies at Mooroolbeek Hall, corner of Studley Park Road and Carson Street, Kew. The institution has been part of Kew for nearly 70 years.

All welcome, enquiries to Jacqui Weir 860 3401.

24 to 25 9am — 4pm & 26 to 27 11am — 5pm The M.L.C. Acquisitive Art Exhibition and Sale will be held in the Betty Jackson Hall (entrance via Fitzwilliam St.), enquiries 810 1397. There will be an expert from Sotheby's on Saturday from 1 — 5pm to give valuations on any items.

26 9am — 3pm Holy Trinity's "Fair On The Hill", opposite the Post Office in High Street, Kew. Stalls such as cakes, plants, jams, records, books, trash and treasure and handicrafts.

30 1.30pm Nursing Mothers' Association, Afternoon Tea for Expectant and New Mothers. Contact Margaret on 853 0712.

8pm "Orchestra of the Stars" at the Melbourne Concert Hall, tickets \$30-\$35, discount for group bookings, ph. 11500. Musicians from the London Philharmonic Orchestra, the Victorian State Orchestra and the Australian Pops Orchestra will be performing. All proceeds to the *Victorian Society for the Prevention of Child Abuse and Neglect*.

DIARY DATES NOVEMBER

4 12.30pm Annual and General Meeting of The Country Women's Association of Victoria, Uniting Church Hall, 142 Normanby Road, East Kew. Visitors and new members welcome.

7.30pm Neighbourhood Watch Meetings at 'Kew Primary School', entry via Pakington Street, Kew. All residents of Zones G176 and G177 welcome.

6 9.00 — 10.30am Immunization at the North Kew Maternal and Child Health Centre, 152 Peel Street, Kew.

7 11am — 1.30pm The Nursing Mothers' Association 'Oaks Day Luncheon', contact Fiona on 853 7821.

9 9.30am-4pm 'Kew Cottages Fete', Princess Street, Kew. 'Zig and

Zag' at 10.30am, Humphrey B. Bear at 2.30pm and the Salvation Army Pipe Band will be performing. There will also be a Merry-Go-Round, the 'Just Jeans' stall, fairy floss, fruit and vegetables, pies and pasties, a raffle, Christmas cards, pottery and art and craft stalls.

13 8pm Kew Historical Society, library complex — no. three hall. Speakers: Professor Peter and Mrs Dione McIntyre, all welcome.

COUNCIL MEETING DATES

Oct. 15 7.30pm: General Purposes Committee

Oct. 22 7.30pm: General Purpose Committee

8.15pm: Council

Nov. 12 7.30pm: Operations Committee

7.30pm: Planning and Development Committee.

Meetings are held in the Committee Rooms and Council Chamber at the Municipal Offices. Entrance is via the main portico off Cotham Road.

All these meetings are open to the public. Copies of agendas are available for inspection, at the loans desk, at Kew library.

Advertising

Advertising in 'Kewriosity' is an inexpensive and effective way for local traders to keep the community up to date, with the services they provide. Call the editor, Lisa Gaffney, on 862 2466 for details on competitive advertising rates.

No endorsement of services advertised is implied by the City of Kew.

The staff of the Kew/Hawthorn Family Day Care Scheme recently joined forces with the Camberwell and Heidelberg Schemes to organise a Seminar for Caregivers. The speaker chosen was Jeannette Harrison, a lecturer in early childhood development and the author of the book 'Understanding Children — Towards Responsive Relationships'.

The provision of Seminars are amongst the many resources available to all Caregivers who join the Kew/Hawthorn Family Day Care Scheme. In recent months there have been In-Service sessions on First Aid, Back Care, Interpersonal Skills and Nutrition. Also offered are a mobile toy library, free equipment loan and weekly playgroups.

If you live in Kew, and would like more information about becoming a Caregiver, please contact the Family Day Care staff — Mary-Joan Gasparini, Diana Harrison or Helen Bolza — at Hawthorn Town Hall (Monday to Friday) on 810 2466, or at Kew Municipal Offices (1.00 pm to 4.00 pm Tuesday and 11.30 am to 5.00 pm Thursday), on 862 2466.

Family Day Care



From left: Caregivers Puspa Silva, Barbara Beath, Jeannette Harrison and Kumudini Bhareti.

ST GEORGE'S

The continuing care of expectant mothers and their babies in the Kew area was assured last month with the successful graduation of all eleven students from the Midwifery School at St George's Hospital and Inner Eastern Geriatric Service.

The training offered is very popular with nurses who live in Kew and the surrounding suburbs, however, such is the Hospital's reputation for midwifery training that nurses from the country areas also flock to take up places at St George's. Some qualified midwives will return to the country to practice, while some will continue at St George's and other metropolitan hospitals.

KEW YOUTH CARD

The "Kew Card" is an information card listing relevant phone numbers for young people in Kew and it is now available from schools, community groups and local youth workers.

The card lists the numbers of the Crisis Line 329 0300, Life Line 662 1000, emergency accommodation 830 5999, medium to long term accommodation 889 6467, help with drugs and alcohol 482 2711, as well as Council's Youth Services 860 5221 and the Kew Youth Resource Centre 853 6828.

The card is for 12-20 year olds and resulted from a recognition that young people generally do not know about the services and resources available in the community. The card is laminated, of credit card size, has bright colors and most importantly appeals to young people. About 150 young people were consulted over the design.

The development of the Kew Card was assured with generous financial support from Kew Rotary. Their continued support in services for young people is greatly appreciated and applauded.

The Mayor of Kew, Cr. Daryl Oldaker, said "Council is very proud to be involved in the development



of the Kew Card. If a young person has a problem or difficulty, there will be a number on the Kew Card they can call for assistance."

Cards are also available from Kew Council's Development Officer, Kate Laing, phone: 860 5221.

BREASTFEEDING RIGHT FROM THE START

October is Breastfeeding Awareness Month which provides the opportunity for the community to consider the many benefits of breastfeeding, for all mothers and babies.

Professor John Dwyer, Head of the Department of Medicine, University of NSW, said, "It has been demonstrated that babies can be spared many infections in their intestinal tract, their respiratory system and even their ears, if adequately breastfeed. In addition, the antibodies in colostrum decrease the

chances that a baby will develop allergic reactions to foods introduced during the first year of life."

The Nursing Mothers' Association of Australia offers valuable support to women who breastfeed. The NMAA provides trained Breastfeeding Counsellors who offer expert advice. The Kew Branch of the as-

sociation represents a network of women who provide information and support on breastfeeding.

The Kew Nursing Mothers' Association is an active and friendly group. The following is a list of forthcoming events:

Wednesday 16 October — Morning Tea

Wednesday 30 October 1.30pm — Expectant and new mothers' afternoon tea

Thursday 7 November 11am — "Oaks Day Luncheon"

Contact Fiona on 853 7821 if you would like to know more about the Kew Branch of NMAA.

The NMAA Kew Group will be raffling a \$150 Safeway voucher, outside Safeway in Walpole Street, on Friday 18 and Saturday 19 October, 1991.

KEWRIOSITY DEADLINES

Residents and local community groups are invited to contribute to "Kewriosity", space permitting. Items for the November edition must be submitted to the Editor, Lisa Gaffney, City of Kew, Municipal Offices, Charles Street, Kew, 3101 before Friday 18 October, 1991. The November Edition of "Kewriosity" will be delivered on the weekend of 9th & 10th November, 1991.

The future of Kew Junction

The Kew Junction Commercial Centre is a traditional strip shopping centre which provides a range of services and facilities to the residents of the City of Kew and beyond, as well as the workers within the Centre itself.

In September 1991, the Kew City Council approved a strategy plan for the Centre, entitled *Kew Junction Commercial Centre — Strategy Plan*, which provides the framework for the Centre's future planning and development.

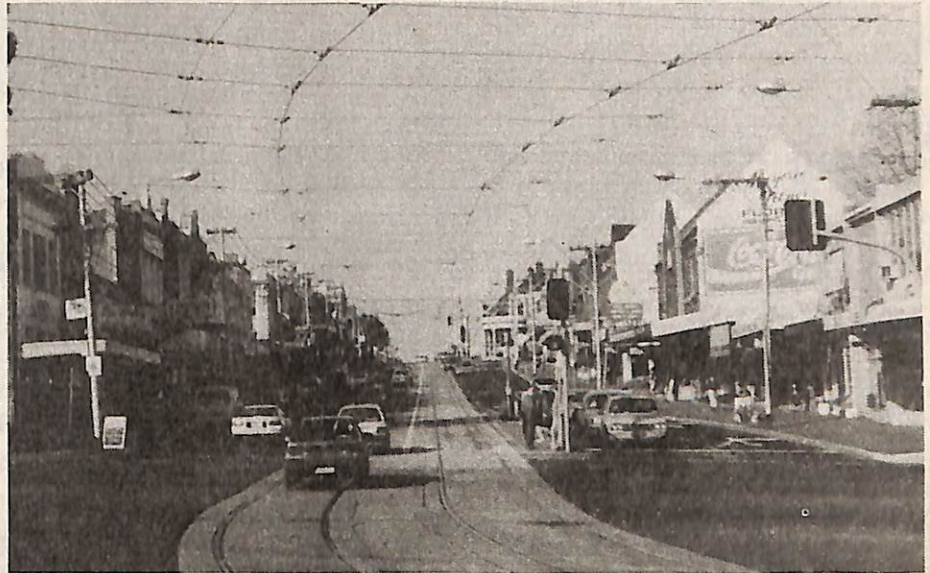
The strategy previously circulated to the community outlines the overall goals for the centre —

- to encourage a range of commercial, professional, entertainment and other community uses and facilities;
- to ensure orderly development of vehicle and pedestrian ways and car parking areas;
- to retain features which give the area its character or identity;
- to assist the restructuring of the built environment to enhance:
 - use by pedestrians
 - appearance of buildings, pedestrian ways and open areas
 - user convenience by clustering functions
 - adequate off-street parking and traffic management.

111 Years of Kew Bowling

Deputy Mayor, Cr. Roger Stree-
ton, recently opened the greens at
Kew Bowling Club, celebrating 111
years of bowling at the Club. The
event took place before a crowd of
120 members and guests.

Recently the Club has recruited
some very fine bowlers, but they
welcome new members. Kew Bow-
ling Club offers free tuition and
coaching from the twice winner of
the Victorian Masters, Max Ellis and
his team of top coaches. Contact the
Secretary, Mr S. Spielman at 14 Wel-
lington Street or phone 853 9650
for more information.



To assist in the implementation of the strategy, Council engaged two consultants to develop both long and short term options for implementation. Their reports are now available —

- Kew Junction Traffic and Parking Report — Turnbull Morgan Pty Ltd, August 1991;
- Kew Junction Strategy — Mechanisms for Implementation Report — Henshall Hansen Associates, August 1991.

Council has made no decisions on the contents and recommenda-

tions of either of the reports. Comments by residents and traders should be made by Friday, 18 October, 1991 and will be considered by the Commercial Areas Strategy Committee, prior to Council making any decisions.

Both reports are available at the Planning and Development Department in the Municipal Offices on a loan basis, for purchase at \$10 each, or at the Kew Library for inspection.

If you have any queries please contact Caroline Rollis, Strategic Planner on 860 5271.

ARE YOU HAPPY WITH YOUR HAIRDRESSER?

Six time Victorian Hairdressing Competition Prizewinner.

Judged, The Victorian State Championship 1989, 90.

A Director of the Hairdressing & Beauty Industry Association 1989, 90, 91

Top Apprentice of the Year 1989. Trained at Aldo Raymond Accredited Professional Hairdresser.

The Aldo Raymond Team of Professionals have many new & exciting ideas.

COME IN AND TALK TO US.

**ALDO RAYMOND
PROGRESSIVE HAIRDRESSING**

141 HIGH ST KEW PH. 862 1446

Open Late Thursday Night • Ample Parking

THE ADULT VIDEO-CASSETTE COLLECTION



The next time you visit the Kew Library, take time to browse through the Adult Video-cassette section. The collection has been expanded to include do-it-yourself and documentary videos.

Subjects range from material on AIDS, and what to do in an emergency, to the identification of ducks, and how to train your dog.

There are helpful do-it-yourself videos for the home handy-person. Some titles include: Starting Croquetting; Understanding Herbal Medicine; Entertaining with Isabel Jones; Microwave Video Kitchen with Virginia Hills, and Starting Tapestry.

For relaxation you may like to take home one of the many opera or ballet videos, or even a play by William Shakespeare. Other videos of interest are: Exploring the

Himalayas: Nepal & Kashmir; Touring New Zealand; The last dream: a personal history of Australia in 3 parts, and, the Long Bow trilogy: 3 one hour films about the village of Long Bow in northern China.

If you are interested in improving your sporting image you could try The Complete Golfer, by Greg Norman; Tennis Our Way; Tai Chi, or Learning to Ski Cross Country and Downhill.

Videos are borrowed on a 2-night loan and your library card is retained as security until the video is returned. You may borrow one video per membership card at one time.

The Library also has a Children's Video section which consists of popular recreational films.

Community Planting Day

On the first day of Spring about 50 residents took part in Kew Council's contribution to the "Greening of Australia", by helping to plant 1500 native trees and shrubs in the Outer Circle Linear Park.

This brings the tally of trees and shrubs planted in this reserve, over the last few years, to about 5000.

Some of the residents who attended were also at last years Arbour week planting. They were most impressed with the growth of trees planted last year.

Special thanks to all the children who attended, making note of 'their' trees so that they can watch the progress. Also thanks to Council's Parks and Garden staff who gave their spare time to help make the day such a success!

Plantings will take place next year and volunteers will be welcome.

HOUSE OF DR. RENAUD TAKING BEAUTY SERIOUSLY

- Dedicated professionals to service and excellence
 - 15 years experience
- Latest technology & treatments — electrolysis & redvein treatment
 - Pedicure (chiroprapy) manicure — collagen facial treatments
 - Dietary advice & skin care — free consultation
- Open all day Saturday — Open Thursday & Friday evenings.

323 High Street, Kew (opp. Charles St.)
ph. 853 9375

20% DISCOUNT WITH THIS COUPON.



Invitation to 'Traffic in Melbourne' Community Workshop

A community workshop will be held on Saturday 19 October 1991, in the Mayoral Suite of the Camberwell Municipal Chambers, Inglesby Road, Camberwell. The focus of the workshop will be VicRoads 'Traffic in Melbourne' study.

Residents are welcome, as the workshop provides the opportunity to express your vision of Melbourne's traffic and transport system into the 21st century.

To register for the workshop please contact Graham Tierney of VicRoads on 860 2905 or 860 2921.

Float a boat

The Rotary Club of Kew does alot of good work for the community. One of their latest projects is to help disabled people enjoy the beauty of the Yarra. They need the support of the community to help provide three row boats for the Studley Park and Fairfield Boathouses, to be utilised by people with disabilities.

The idea is a 'first' in the region. It will particularly meet the needs of the Royal Talbot Rehabilitation Centre, Kew Cottages, Fairfield Hospital, the Yooralla Society and will also assist people with disabilities from other areas.

The cost of each modified boat is \$2000. If you would like to show your support, please send any donations to the Rotary Club of Kew, PO Box 101, Kew, 3101.

