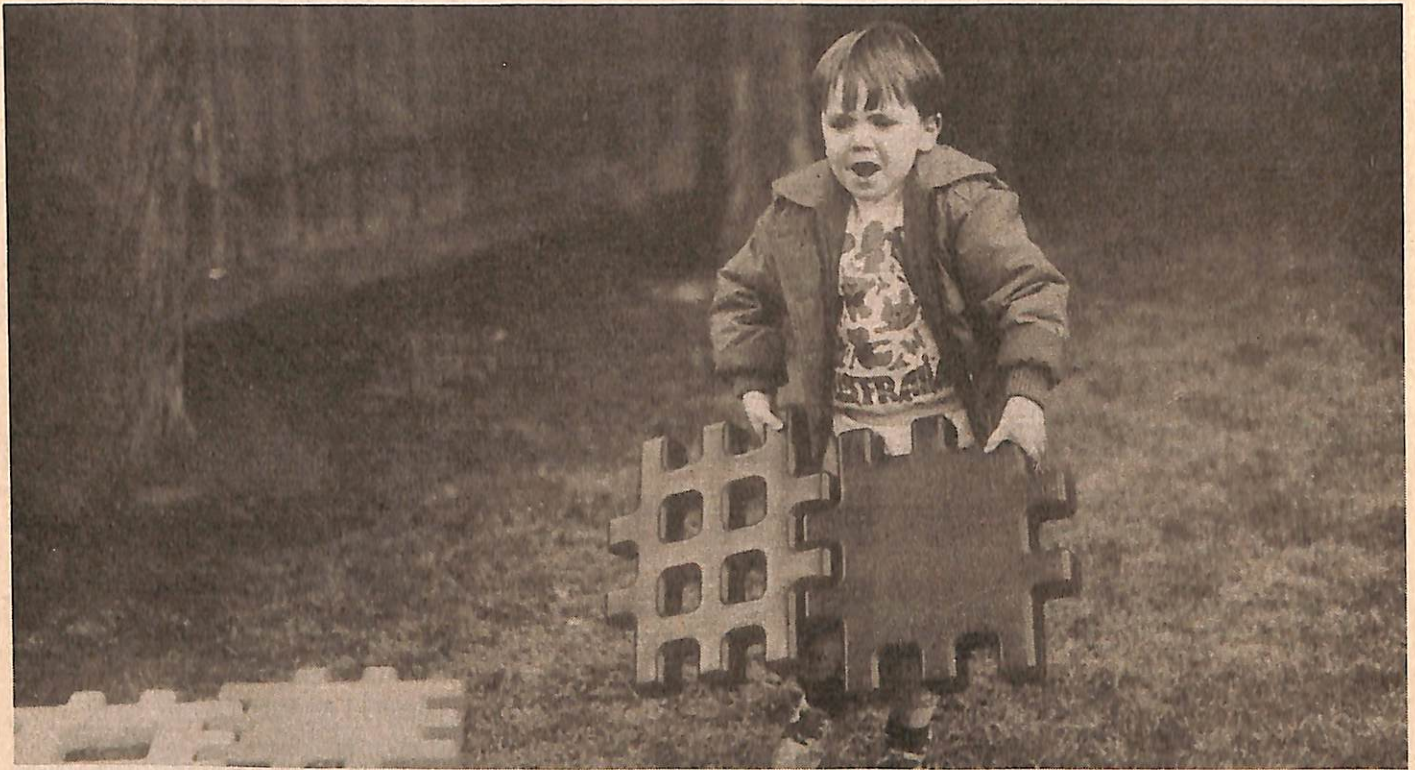


# KEWRIOSITY

City of Kew, Municipal Offices,  
Charles St., Kew. 3101. Telephone 862 2466

DECEMBER 1990



Waffle blocks in use. Photo: Jan Bottcher

## PLAY EQUIPMENT BROCHURE

A brochure about play equipment for young children in Kew is to be released soon.

A variety of easy-to-use colorful play

equipment is available for hire from the Kew Depot. The equipment is provided for birth to five year olds and the over five year olds. Some of the equipment includes a parachute, earth ball, hula-hoops, big waffles (pictured above).

For further enquiries contact the Kew Depot Princess Street on 860 5250.

## COUNCIL TO REVIEW COMMUNITY INFORMATION SERVICE

After almost three and a half years, Kew Council's information officer and editor of *Kewriosity*, Olwyn Eaton, is to leave her job.

Mrs Eaton, who left the Council on November 23, has decided to concentrate next year on her university studies and to further a freelance writing career.

Following Mrs Eaton's resignation Kew Council is to take the opportunity to review the part the information officer's role plays in the provision of community information, as well as look at other alternatives for keeping Kew residents informed.

As a result *Kewriosity* will not be published again until March 1991. However community groups, schools and other organisations with items of interest, are encouraged to continue forwarding them to the Council for possible publication in March.

Speaking of her decision to resign her position, Mrs Eaton said she was sad to be leaving the Council and her work for the Kew community. 'After more than three years helping to develop and improve the Council's relationship with the wider community, I have formed firm friendships and relationships with councillors, officers, many individuals and groups in Kew and I will sorely miss the day to day contact with such fine people'.

Residents with enquiries concerning *Kewriosity* or any aspect of the Council's information services should contact Council's Director of Corporate Services, Mr Peter Huggins.

## RATES REMINDER

**Residents should by now have received their Rate Notices for the 1990/91 financial year.**

Property owners are reminded that the first municipal rate instalment falls due on Monday, December 31, 1990.

Payment may be made at the cashier's desk at the Municipal Offices from 8.45 am to 4.30pm weekdays from receipt of the rate notice until 4.30pm on December 31. Alternatively ratepayers may pay at any bank, but payment through any branch of the National Australia Bank will not incur a transfer fee.

Payments through banks will only be accepted until 4pm on December 31.

Ratepayers should note that failure to pay the final instalment by the due date means that interest at the annual rate of 20 per cent will be charged from December 10, 1990 — the date the rates become due and payable. The interest charge is a requirement of the Local Government Act.

Property owners are also reminded to write to the Rate Collector notifying changes in property, ownership or occupancy. Failure to do so means an owner remains liable for all rates and charges on the property until a notice of disposition has been received.

# DATES FOR DECEMBER

- 5** Wednesday. Immunisation sessions at 9.00 am - 10.30 pm at North Kew Infant Welfare Centre, 152 Peel Street, Kew, phone 861 9466 and East Kew Infant Welfare Centre, 21 Strathalbyn Street, East Kew, phone 859 1380.
- 7** Friday. Playgroup picnic. Pre-schoolers, playgroupers and their parents are invited to the annual Playgroup picnic run by Kew's three maternal and child health Sisters. The picnic will be held at Paddock at 10 am onwards. BYO lunch, drinks, food for the ducks and a gift (named) for your child for Santa to present. Enquiries: Sister Shirley Tinker on 861 9835.
- 8** Saturday. The Kew Band presents 'Contrasts' at 8.00 pm in the Kew High School Community Theatre. Admission prices: adults \$8.00 and children \$2.00. Enquiries: Madonna Lord on 725 0850.
- 10** Monday. Neighbourhood Watch H001 meets at Kew Library Complex hall, off Cotham Road at 7.45pm. New members welcome.
- 11** Tuesday. Neighbourhood Watch H27 meets at Kew Library Complex hall, off Cotham Road at 7.30pm. New members welcome.
- 12** Wednesday. 'A Pleasant Christmas Afternoon' at the Kew Youth Resource Centre, 10-12 Derby Street, Kew, from 3.00 pm - 7.00 pm. No alcohol allowed.
- 12** Wednesday. Camberwell Film Society is showing 'The Man From Snowy River' at the Theatre, Camberwell City Library Building. Contact Joan or Jean on 882 4655 or 808 6299.
- 16** Sunday. Kew's annual 'Carols by Candlelight' in Petrie Square at 8.30 pm, outside the Municipal Offices. BYO rugs, cushions and chairs. Carol booklet and candles on sale aid Kew High School chaplaincy fund.
- 16** Sunday. Book sale for Kew living.
- 19** Wednesday. Boroondara Bushwalkers meeting in Kew Library Complex hall, off Cotham Road at 7.30pm. New members welcome. Enquiries: Jim McLaughlin, 859 5876, after hours.
- 19** Wednesday. Immunisation sessions at 9.00 am - 10.30 am at North Kew Infant Welfare Centre, 152 Peel Street, Kew, phone 861 9466 and East Kew Infant Welfare Centre, 21 Strathalbyn Street, East Kew, phone 859 1380.
- 20** Thursday. Kew Branch, Penguin Club, meets at Kew Library Complex hall, off Cotham Road, at 8pm. Enquiries: Margot Harrison, 818 6127.

## WOMEN'S HEALTH DAY

Kew Council is planning a Women's Health Day in March next year.

The Council's chief health surveyor, Mauro Bolin, would like to hear from women of all ages

who have ideas about particular health issues which should be addressed or could be included on the day.

Mr Bolin also wants to hear from women who could help plan the day or who want to contribute to its success. He can be contacted on 860 5244.

## DON'T BIN IT, BAG IT

Joining forces to promote household recycling is Kew Council and the Litter Research Association.

The two have jointly produced and distributed a brochure which encourages Kew householders to recycle glass bottles and jars, aluminium drink cans and PET plastic soft drink bottles.

The recycling campaign is part of the LRA'S 'Don't Bin It, Bag It' campaign which is running concurrently in local communities throughout the State.

The Council's brochure also includes information about other recycling services and waste minimisation initiatives.

This year the Council says Kew residents will throw out enough household garbage to fill the Kew Junction to a height of three metres.

Residents who did not receive the brochure should contact the Engineering Department on 860 5234.

## HARD RUBBISH COLLECTION TO CONTINUE

Kew Council's second hard rubbish collection for 1990 continues this month with householders being advised of details via letter box drop.

The hard rubbish collections, held twice a year, are for hard to get rid of items only. These include fridges which will be collected separately from other hard rubbish and will be DE-gassed prior to disposal, prunings which must be tied neatly in bundles, and household items such as old furniture or small building materials. Full details of articles which can be disposed of are included in the notice announcing collection dates.

Residents are reminded NOT to dispose of normal household waste through the hard rubbish collection service. For enquiries regarding hard rubbish or other waste collections, contact the Council's Engineering Department on 860 5234.

Please keep in mind that the Council is currently reviewing all its waste management schemes. Details of the review will be brought to you in future editions of this newsletter.

## KEWRIOSITY

Kewriosity is a local newsletter combining Kew Council and community news. This month's edition was produced and published by Olwyn Eaton, Information Officer for the City of Kew.

By producing the newsletter, Kew Council aims to provide you with a range of interesting and informative articles covering its deliberations and decision making. It also includes items of general interest and importance to the Kew community and information not generally available through daily media outlets. Enterprises, organisations, institutions and individuals are welcome to submit articles for publication or can contact the Editor to assess the suitability of articles for inclusions.

Kewriosity is delivered to every property in Kew, usually by community groups who use the deliveries as a fundraiser. If you do not receive your regular copy contact the Council on 862 2466.

Kewriosity is printed by York Press, 61-63 Burnley Street, Richmond, 3121. Telephone: 427 9700.

# Commentary

For the second year in a row it has been necessary for us to formulate our annual budget in a climate of severe State and National economic restraint.

Like nearly all councils in Victoria, Kew has been badly hit by cutbacks in State and Federal government funding.

The cuts have mostly come in the form of reduced funding, or static funding with no account being taken by the government of the rise in the consumer price index. With CPI running at an annual rate of about 7.7 per cent, this widens the funding gap needed to be met by ratepayers.

Many of our operations have increased in cost at greater than the CPI level. Among them is Workcare where levies have increased 47 per cent despite a 40 per cent cut in employees lost time due to injuries caused at work.

A major cost is garbage collection and disposal, where this year the Council will spend over \$1 million of its \$15 million budget solely on garbage services.

Just the same, this year's rate increase of 9.34 per cent is lower than that set by many other councils. To achieve it we have had to cut some planned programs, to reduce the level of service in others, and to introduce a garbage charge for

all residential properties and properties which receive a garbage service.

The garbage charge represents the disposal cost of garbage which we as a community generate, not the cost of collecting garbage from Kew properties.

Until now the cost of disposal, recycling, hard rubbish services and tipping vouchers, has not been isolated from the general rate figure on our rate notices and shown to residents as a separate charge.

But in an effort to show that there is an enormous monetary cost, let alone an environmental cost to rubbish disposal, we have isolated this figure and have calculated it as a fixed charge per property where a garbage service is available.

It is hoped that the introduction of the garbage charge will have the effect of encouraging householders to minimise waste by careful purchasing, reduction by composting, and reuse by recycling.

In future years the level of the garbage charge will depend on the community's approach to garbage disposal. Since the Council must pay to dispose of household garbage by weight measurement, the more we individually manage to reduce our waste and reduce the amount being



Cr. Daryl Oldaker, Mayor of Kew.

disposed of, the less the overall disposal cost will be.

The challenge lies in new methods of minimising household waste through recycling and through adopting the most appropriate methods of collecting household garbage. Our Waste Management Committee is currently investigating several options and it is our intention to use the garbage charge to implement any new methods of collection.

## CUTS THREATEN TRAFFIC SCHOOL

Almost 10,000 school children stand to lose out on traffic education if the Victorian Government pulls the plug on teacher funding for Kew's Traffic School.

The school is staffed full time by a trained primary school teacher seconded from the Education Department. The position is fully funded through the extension education service of the Ministry for Education.

Following the State Government budget cuts introduced in August, the Education Ministry has announced a review of the extension education services and is considering the idea of withdrawing total funding for the Kew Traffic School teacher position, or requiring Council to meet the cost of the service.

Mayor of Kew, Councillor Daryl Oldaker, said Kew Council already makes a significant contribution to the Kew Traffic School. 'This year we have budgeted \$13,000 to fully maintain the premises and all its equipment, to repair and replace bicycles and helmets, to buy formal teaching aids for the school, and to give full clerical and secretarial support to the school's teacher.'

'This amount is quite significant when one considers that Kew is a small municipality of almost 30,000 and our rating base is narrowly defined because it is almost totally residential. Any request by the State for school funding is just not on. Of the 243 schools that used the Traffic School in 1989/90, only nine were Kew based', he said.

Kew Traffic School is not just for children of Kew or the children who go to Kew schools. It is for children from the whole of the Melbourne metropolitan region. 'For that reason we don't believe it is appropriate for Kew residents to be expected to meet half or all of the cost of employing a teacher at the Traffic School, when we already provide the schools with the service free of charge', he said.

Councillor Oldaker said the safety of children on Melbourne's roads is paramount. It is a responsibility that State Government, local Government and individuals in every community must share.

'To us it appears that while one arm of the State Government is promoting road safety, another is attempting to dismantle what is a very effective training ground in road safety for young children. The State Government is spending millions of dollars each year on developing and providing safe driver and traffic education programs and it seems detrimental and short sighted for the Ministry of Education to threaten to withdraw funding for the traffic school teacher', he said.

## CHRISTMAS CARDS

St George's Hospital ladies auxiliary has joined forces again this year with the Royal Victorian Eye and Ear Hospital Kew auxiliary, to sell Christmas cards.

The cards are on sale until December 14 in the foyer of Ed Credit at 222 High Street, Kew. Sales are conducted Tuesday to Friday from 10 am to 4 pm. Funds raised support St George's public hospital, Kew, and the Royal Victorian Eye and Ear Hospital in East Melbourne.

For more enquiries contact Mrs Reed on 817 4671.

## NO COST CALENDARS

Life: Be In It 1991 calendars are available at no cost from Kew Council's health department.

The calendars list information about organised activities which help children and adults of all ages lead active healthy lives.

To get your copy contact the Council's chief health surveyor, Mauro Bolin, on 860 5244.

## COUNCIL MEETING DATES

December 4	Special Committees 7.30pm
December 11	General Purposes Committee 7.30pm
December 18	Council 8.15pm
February 5	Special Committees 7.00 pm
February 12	General Purposes 7.30 pm
February 19	Council 8.15 pm

There will be no meetings until the February cycle which begins with the Special Committees meeting on February.

Meetings are held in the Committee Rooms and Council Chamber at the Municipal Offices. Entrance is via the main portico off Cotham Road.

All meetings are open to the public. Copies of agendas are available for consultation prior to each meeting. They are held at the loans desk at Kew Library.

## FESTIVE GREETINGS

FROM THE MAYOR,  
COUNCILLORS  
AND STAFF OF  
THE CITY OF KEW

## Bubble and Squeak

New parents and those new to an area often find they want to extend their local networks or extend their interests and activities.

The Family Resource Centre in Victoria Road, Hawthorn, provides many such opportunities for parents with pre-school children.

Each Monday, from 10.30 to 12.30, Bubble and Squeak and its companion group Bubble and Squeakettes meet to inform and entertain parents and their children.

Bubble and Squeak is a social group for parents. It caters for their needs in weekly sessions of craft activities and demonstrations, discussions on topics of interest, and visiting guest speakers.

Bubble and Squeakettes, as the name suggests, is an activities group for children — activities that are planned by a trained child development worker for learning and fun in an enjoyable atmosphere.

On Monday afternoons from 1.30 to 3.00, new mums can join the New Mother's Group. Discussions and speakers centre on information and ideas on how to address the new challenges that face women after the arrival of their first child.

On Thursdays from 10am to noon, the focus shifts to combined enjoyment for mother and child in stimulating playgroup activities.

The playgroup, well-stocked with toys and equipment, gives parents the chance to play with their own and other children in a relaxed and informal atmosphere where both can make new friends.

The Family Resource Centre is open to all Kew families. It is at 61a Victoria Road, Hawthorn. Claire Snowdon at Care-Force Inner East can help with more enquiries on 836 3311.

## COMMUNITY ORGANISATION FOR YOUNG

Rotaract is a community based organisation for young people aged 18 to 30.

The club offers involvement for its members in a variety of social and community-based activities, as well as the opportunity for leadership development.

Kew Rotaract Club meets on the second and fourth Monday of each month at East Kew Primary School, Kitchener Street, at 7.30 p.m. or 7.45 p.m.

Upcoming events include a restaurant evening, film night, car rally and giving "Blood for Life" for the Red Cross.

Judi can help with enquiries on 853 9830 or you can contact Steve on 818 5783.

## TEENAGE HOLIDAY PROGRAM — JANUARY 1991

The Kew Recreation Centre and Kew Council are organising summer holiday activities for teenagers during January 1991.

One of the programs offered will be Day Trippers, which are day excursions such as horse-riding, the pictures or the beach. Other activities will be based at the Kew recreation Centre.

For more details contact Sue Wragg at the Recreation Centre on 861 6177 or Kate Laing at Kew Council on 860 5221.

## HOSPITAL RECORDS GOOD FINANCE RESULT

St. George's Public Hospital, Kew, has reported a 'remarkable' financial result for 1990, considering tight financial constraints and mounting pressure to increase inpatient numbers.

At the hospital's forty-first annual general meeting in October, guests were told a budget deficit of just over \$30,000 was 'truly a remarkable performance'.

Executive Director at St. George's Mr Malcolm Kinloch, told the meeting 'the continued pressure to increase the mix of public patients without any adjustments to our recurrent funding base, made planning for the year all the more difficult'.

He said the hospital 'handsomely exceeded' its target mix of 40 per cent public patients in

1989-90 by 4.2 per cent — the highest ever mix of public patients at St. George's.

The hospital is soon to be part of a larger multi-campus public community hospital network serving the inner eastern suburbs.

It will merge with the Victorian Parade Geriatric Centre and Kew's Henry Pride Unit of Mount Royal Hospital.

The new facility will service Kew, Hawthorn Camberwell, Fitzroy, Collingwood, Richmond Northcote and East Melbourne. The amalgamation also includes Camberwell and Hawthorn Day Hospitals and the Camberwell and Northcote Day Centres.

The new multi-campus hospital will offer residents acute medical and surgical services, obstetrics and paediatric services. Geriatric assessment and rehabilitation, short-term residential nursing home care and day hospital and day care programs, will also be available.

## COUNCIL OFFERS RELIEF CARE

Families or individual carers of children or young people with disabilities, occasionally need time out on their own.

The City of Kew helps make this possible by providing a program of temporary care through its Specific Home Care Service. The service provides temporary care for young people with intellectual, physical or sensory disabilities and relief care for individual carers or for families. Specific Home Carers begin by getting to know the person with disabilities and the person providing regular care.

This initial learning process is extremely important because every person's disability is unique and must be managed in a way that provides the highest possible standard of temporary care.

It is also important because carers and families need to be confident about leaving their child or young adult in order to enjoy family, social or recreational activities.

Specific Home Carers undertake a special training program designed to help them acquire the skills needed to replace regular carers who are temporarily away from home.

Training sessions are conducted with the assistance of the regular carer or family member. Specific Home Carers learn how to effectively bathe, splint, toilet or feed the child or young person with disabilities. This training often includes learning how to maintain existing therapy programs and entertain through recreational activities.

Kew's Specific Home Care Service is available during the day and has limited availability during weekends and evenings. A home visit and assessment is required before the service is implemented and a small hourly subsidised fee for the service is charged.

Enquiries and requests for the service may be made by contacting the Council's Home Care Supervisor, Miss Greta Grutzner, on 860 5222. Miss Grutzner is available to accept calls between 8.30 am and 10.00 am or 3.30 pm and 5.00 pm, weekdays.



Specific Home Carer, Deborah Hicks, adjusts a splint for young sam.

# DETERIORATING VISION MAY MEAN DANGER

People having difficulty crossing roads, reading signs or even just moving around safely, may have reached the stage where some form of mobility training would be helpful.

The Royal Guide Dogs Associations of Australia, based on Chandler Highway Kew, provides mobility training free of charge to people with visual impairments.

Though often thought of as only providing guide dog training, Royal Guide Dogs teaches people who have a visual disability to move around safely and confidently whether in the home or out in the street. A large percentage of mobility programs do not involve guide dogs.

Mobility training can be as simple as teaching someone to get from their back door to the clothes line. This is called orientation training. Or it can be training with long canes, electronic aids which are used in conjunction with a long cane or guide dog, or low vision aids and sight enhancement training for people who have suffered loss of vision through a stroke or head injury.

Most mobility training is carried out by instructors in and around the person's own home. If this is not suitable the Royal Guide Dogs Association has a residential facility at its Kew campus. Here clients can feel relaxed and can concentrate solely on their training. All accommodation, mobility aids, training and aftercare on campus are also provided free of charge.

For further information about the services provided by Royal Guide Dogs, please ring 860 4444.



Orientation and Mobility instructor, Trudy Irwin, instructing on the use of the long cane. Photo: Courtesy Royal Guide Dogs Association.



Kew Rotaract Club members help spivie up Kew's Youth Resource Centre in Derby Street. Photo: Courtesy Kew YRC.

## FACELIFT FOR YRC

Kew Youth Resource Centre in Derby Street has had a facelift.

The Centre, based in adjoining brick cottages, has been painted in the trim colours of Brunswick green, heritage dark crimson and Edwardian cream, to blend aesthetically with other historical houses in the area.

Painting and preparation was a team effort

involving young users of the Centre and 15 members of Kew Rotaract Club.

More renovations have been taking place inside the Centre with young people from St Hilary's participating in the repainting. Two old kitchens at the rear have been demolished and the Centre now has what all houses need — a big backyard. Over the summer the rear of the house will be repainted and a barbecue built.

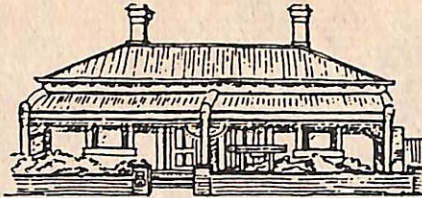
The kitchen, now in the old store room, will be cleaned up soon and painted by young people

from Kew Baptist church. New curtains adorn the front windows, daisy bushes the front garden, and all that's needed to finish the Centre is some soon to be completed work on the office

Kate Laing, youth services development officer for Kew Council, said 'Everyone involved in the Centre's renovations should be very proud of their efforts. The Centre is looking fantastic and is on its way to becoming a place that young people in Kew can be proud of'.

## KEW COMMUNITY HOUSE

Co-ordinator: Kaye Wood



6 DERBY STREET, KEW, VIC. 3101  
Telephone: 862 3126

### TIME OUT FOR MYSELF

A newly formed parent friendship group in Kew grew out of a need for friendship, a little bit of time for oneself, and the necessity for companionship with other mothers.

The group, which meets monthly at Kew Community House, began earlier this year when several mothers attended a short term parenting course at the House.

But when the course finished, some of the women decided they had enjoyed each other's company so much, they would continue to meet on a monthly basis. New members have joined the group since and many more are welcome.

The women say the greatest advantage of the group is the availability of child care at the House. "The children are very well cared for, there are plenty of indoor and outdoor activities, and they have adult supervision at all times. Just

knowing they are in the same building is a great comfort, especially if they are quite young", one mother said.

Another mother, with no extended family support, said the opportunity to meet new people, to get out of the house and to build up local support networks, was of substantial benefit to her and her young family.

"It all started by feeling comfortable about spending time with people I'd got to know. But as the group grows and facilities at the House keep on improving, it's getting better and better", she said.

"Really, I just wanted some time away from the house, away from my child, and time out for myself. That's really important because in the end it makes you a more fulfilled person and a much better parent and wife", another young mother said.

If you would like to know more about the parent friendship group, contact Kaye Wood at Kew Community House on 862 3126.

## COUNCIL'S HOLIDAY SERVICES

### MUNICIPAL OFFICES:

Closed 2 pm Monday, 24th December until 8.45 am Thursday, 27th December, 1990. Also closed Tuesday 1st January, 1991.

### GARBAGE COLLECTION:

Garbage will be collected as usual EXCEPT on Christmas Day and New Year's Day. The Heidelberg Refuse Station (cnr Banksia Street & Waterdale Road) will be closed ONLY on Monday, 24th December, Christmas Day and New Year's Day.

### RECYCLING DEPOT — COUNCIL DEPOT, PRINCESS ST:

Closed ONLY on Christmas Day and New Year's Day. Open weekdays 8 am to 3 pm. Open Saturday, Sundays and Public Holidays 10 am to 2 pm to receive bottles, papers and cardboard.

### LIBRARY:

Closed from Sunday 5.30 pm, 23rd December until Wednesday, 26th December (inclusive). Open Thursday, 27th December to Friday, 28th December (10.30 am-6 pm). Open Saturday, 29th December (9 am-noon) Closed Sunday, 30th December to Tuesday, 1st January, 1991 (inclusive). Re-opens Wednesday, 2nd January, 1991 (normal hours resumed).

### IMMUNISATION:

This program will resume on Wednesday, 16th January, 1991.

### OCCASIONAL CARE CENTRE:

Closed for Occasional Care from 4.30 pm Thursday, 20th December until 8.30 am Wednesday, 30th January, 1991. Telephone inquiries regarding enrolments from Tuesday, 29th January, 1991.

### MATERNAL & CHILD HEALTH CENTRES:

Between Christmas and New Year a roster system will operate for phone calls and appointments where necessary.

Monday 24th December, Denmark Street, Kew. Strathalbyn Street, East Kew; Thursday 27th December, Peel Street; Friday 28th December, Strathalbyn Street, East Kew; Monday 31st December, Denmark Street, Kew. Strathalbyn Street, East Kew.

## WHAT HAPPENS TO MEDICAL WASTE?

The President of the Kew Lions Club, Mr. Bert Stevens, the foundation President, Mr. Jim Douglas, and Life Member, Mr. Noel Lyall recently visited St. George's Hospital to present the Hospital with a trailer designed specifically to safely transport medical waste to Fairfield Hospital for incineration. The trailer cost \$1,200 to construct.

In thanking the Kew Lions Club for their generous donation, the St. George's Director of General Services, Mr. Rogers said, the disposal of waste is a world wide problem confronting all organisations including hospitals. The Environment Protection Authority has recently asked hospitals to review their methods of disposal and management of wastes and has stressed the need for proper management of biochemical wastes. This is achieved by separating hazardous and non-hazardous components at their point of origin. Incineration remains the preferred method of disposal particularly for the more hazardous of these wastes. It is essential that bio-chemical wastes are properly packaged, labelled, handled and transported to minimise any risk to waste handlers and the community.

The Hospital's Environment Services Officer, Mr. Kreitem said, St. George's waste will now be transported in a safe and secure manner.



St. George's Hospital receive medical waste trailer donated by Kew Lions Club. Photo: Courtesy St. George's Hospital.



*Kew East Primary School Band, 1990. Photo: Courtesy Kew East Primary.*

## MUSIC A TRADITION AT LOCAL SCHOOL

Music is an integral part of the tradition of East Kew Primary School.

For many young pupils it is the beginning of an interest and skill that is carried into secondary school and beyond, in both school and community bands.

Kew East Primary Band is one of only a few primary schools still operating in Victoria.

The Band, which started as a brass band for boys in the 1930's, has since expanded to include over 60 children from grades three to six.

Most children rent their instruments from the school and participate in small group lessons during the school term. They rehearse twice weekly at lunchtime.

The range of instruments on offer includes trumpet, trombone, euphonium, tuba, tenorhorn, clarinet, flute and percussion.

For sole teacher and conductor of the Band, Mrs Barbara Vaughan, this represents quite an achievement. Mrs Vaughan has been music teacher and director of the Band for the past four years. Under her leadership the Band developed and performed creditably by being highly placed in several music competitions.

This is especially notable considering that the Band, because it is one of only a few primary school bands in Victoria, must compete against secondary school bands with older more experienced musicians.

This year the Band performed at the Victorian School Music Association Festival in Camberwell and the Melbourne's Schools' Music Festival at

Monash University. Two concert appearances at Doncaster Shoppingtown — one to open Education Week — a concert for local children from Kew and Hawthorn West primary schools, and a performance in the Music Makers' Concert at Kew High School, have rounded off the year for the Band.

At the Melbourne Schools' Music Festival at Monash, one festival official now a graduate of the Melbourne Conservatorium, said he recognised the ageing euphonium of Kew East Primary School Band. He played it himself as a young pupil in the Band.

President of the Band's parents association Mrs Janet Chase, said that 'by performing in public and for music competitions, Kew East Primary School Band is clearly demonstrating how a State School can be part of the entire community and can help enrich it at the same time.'

## DON'T FORGET

## KEW FESTIVAL FUN DAY

## SATURDAY, 16TH MARCH, 1991

## CAROLS BY CANDLELIGHT

Kew's popular community Christmas celebration, *Carols by Candlelight*, will be held in Petrie Square, Kew Municipal offices (cnr Cotham Road and Charles Street), on Sunday 16th December, commencing at 8.30 p.m.

Kew's award-winning band, Kew Band, will lead the carols and singing. Singing groups including the Sacred Heart Choir will also participate. Carol booklets and candles will be on sale, with proceeds going to the Kew High School Chaplaincy Fund.

Organisers hope for a fine night so people can sit on the grass, but advise residents to bring folding chairs, rugs and cushions for maximum comfort.

Organised by the Kew Minister's Fraternal and Kew Council, *Carols by Candlelight* offers a great opportunity for a community expression of the love, hope and peace of the Christmas story. The Fraternal invites all residents, and particularly the children, to join together for this special event, and wishes everyone a happy and holy Christmas.

## SPORTS SUCCESS FOR YOUNG CAREY WOMEN

1990 has been a successful year for women's sport at Kew's Carey Baptist Grammar School with outstanding individual and team performances in local and metropolitan competitions.

In team sports Carey's young women have completed the year winning four Eastern Suburbs Association premierships and have displayed some outstanding achievements in the Associated Public Schools competition.

They triumphed with a win in the first ever ESA softball premiership, won back-to-back premierships with their senior A netball team and came first at the Victorian University Regatta with their rowing team in its first foray into the competition. To top off these successes the girls senior A basketball and cricket teams completed this year's ESA season undefeated and premiers, the senior girls hockey team came third in the APS round robin, and the girls athletic squad came fourth in the ESA athletic carnival.

Outstanding individual Carey performers are Kim Neilson, Year 11, selected in the Victorian under 18 womens cricket squad; Dianne Clark, Year 12, elected captain of Victoria's under 18 softball team; and Vanessa Hallum who played in Carey's Open A basketball team.

A spokesperson for Carey Grammar said the school is proud of women's sport at the school. 'Many of our young women work hard throughout the year to be selected in a team so that they may compete for the School and be part of its history. It's a great achievement to be part of a school team and the girls success is even more important when you consider that boys outnumber girls at the school by about two to one'.



Carey student Keisha Clements (left) pictured winning the ball from her Ivanhoe Grammar opponent. Photo: Courtesy Carey Grammar School.



Kew residents enjoy gentle water exercise at Kew Recreation Centre. Photo, courtesy Kew Recreation Centre.

## SOMETHING FOR EVERYONE

**Kew Recreation Centre's basic philosophy is to offer programs and activities that offer something for everyone.**

For one month from December 31 to January 28, the Centre is running a series of action-packed summer programs for young people on school holidays.

Included is a series of week-long camps which run from January 14 to 18 and January 21 to 25, as well as teenage 'day trippers' — a series of day-long outings for teenagers and their friends. Lawn

games and programs will feature at the Centre itself while at the pool there'll be lots of action and activity and plenty of fun on the waterslide. Day supervision is available if required.

In February the Centre's innovative gentle exercise program for older Kew residents resumes after the school holiday break. The program includes gentle exercise to music, gentle water exercises, walking at a 'walk and talk' pace, and gentle gymnastics. New walking and water-based sessions for older, more frail residents will be added to the program.

Sue McNish or Sue Wragge can help with more information on 861 6177.

## LIBRARY CORNER

**If you need to escape life's pressure for a while, why not try losing yourself in a fantasy novel.**

Try travelling through time and exploring new or parallel worlds. Experience and adventure with magical and supernatural beings, discover dragons, unicorns and other mythical creatures; combat the forces of good and evil with magic devices and sorcery, or simply remain in your own world and experience the horror of nonrational happenings that shouldn't occur.

Whatever your preference, Kew Library has a wide range of fantasy books covering all aspects of the writing style.

As well as fantasy novels, the Library has a small collection of 'Dungeons and Dragons' manuals and 'choose your own adventure' stories.

A select list of fantasy writers is available at the Library's loans desk, and staff will be happy to suggest other authors of you have read all the books by those listed.

Any time you are unable to find the book you want on the shelves, you are welcome to fill in a card to reserve it. There is a small fee for service which covers notifying you by post when the book is available to be borrowed.

## DEADLINE

**Copy for the March, 1991 edition should reach the Municipal Offices by Thursday, January 31, 1991. For enquiries on contributions/deadlines, contact the Editor on 862 2466.**