

KEWRIOSITY

City of Kew, Municipal Offices,
Charles St., Kew. 3101. Telephone 862 2466

OCTOBER 1990

LOOKING LOCALLY FOR LEISURE

On a cold and wet September day, Kew residents were amazed to see their Mayor, Cr Daryl Oldaker, abseiling down the east wall of the Municipal Offices.

It was all in a day's work for Cr Oldaker, who made his leap from the roof of the three storey building to launch a new Council brochure on community leisure activities.

Cr Oldaker, who had never abseiled before, took part in the daring demonstration to illustrate the alternative leisure activities available in the local area.

"It's so easy to fall back on the established recreation options like golf, tennis, cricket and football. But there's a world of other recreational opportunities out there that most of us never give thought to", Cr Oldaker said.

By producing the brochure the Council aims to stimulate interest in a wide range of leisure activities. Quite often local residents go looking for recreation and leisure opportunities elsewhere without realising what's available in Kew or how the Council can help put them in contact with groups and clubs nearby, Cr Oldaker said.

"We want to promote the range of resources available in Kew as well as direct people to focal points in the community where more information can be obtained".

Copies of the new brochure are included with this delivery of Kewriosity. They can also be obtained at the library, recreation centre, community house, youth resource centre, kindergartens and maternal and child health centres.

YOUR JUNK ROTARY'S JEWELS

Kew East Rotary Club needs your good 'junk' for a fundraising Garage Sale being held on Saturday October 13 and Sunday October 14.

The sale, at 32A and 32B Argyle Road, Kew, will be held between 9am and 4pm on both days. Collection of saleable goods can be arranged by contacting Mike Freeman on 859 1837 or Peter Leonard on 817 6161, during business hours.

Rotary is a community based organisation actively involved in raising money for projects such as Life Education centres, driver awareness programs for young drivers, and provision of facilities in public parks and community centres in local areas.

INSIDE

FETES	P.2
BUDGET	P.3
HARD RUBBISH	P.3
SKATEBOARD	P.4



The Mayor of Kew, Cr. Daryl Oldaker, makes a daring leap to launch Kew Council's community leisure brochure. Photo: Simon Hoey, courtesy Progress Press.

Dates for October

8

Monday. Neighbourhood Watch H001 meets at Kew Library Complex hall, off Cotham Road at 7.45pm. New members welcome.

9

Tuesday. Neighbourhood Watch H27 meets at Kew Library Complex hall, off Cotham Road at 7.30pm. New members welcome.

10

Wednesday. Kew Ladies' Probus Club meets at Kew RSL, 63 Cotham Road, at 10am. Guest speaker: Ms Lynette Schifftan, Senior Executive at Coles Myer. Enquiries: Mrs Stevenson, 862 1197.

Kew Historical Society Annual General meeting, 7.30pm, at Kew Library Complex hall, off Cotham Road. Guest speaker: from Kew Council.

11

Thursday. Kew branch, Save the Children Fund, Kew Library Complex hall, off Cotham Road at 9.30am. Enquiries: Mrs Price, 817 5458.

15

Monday. Royal Victorian Eye and Ear Hospital, Kew auxiliary, meets at Kew Library Complex hall, off Cotham Road, at 1.30pm. New members welcome. Enquiries: Mrs Reed, 817 4671

17

Wednesday. Children's immunisation session at East Kew Maternal and Child Health Centre, 21 Strathalbyn Street, from 9am to 10.30am. Note: Measles/mumps/rubella given only between 9am and 10am. Enquiries: 859 1380.

Kew Arthritis Self-Help group meets at Kew Library Complex hall, off Cotham Road, at 10.30am. Visitors welcome. Morning tea served. Guest speaker: Master Eng Chor, of Celestial Tai Chi College. Demonstration and discussion on Tai Chi. Enquiries: 862 2021 or 862 1409

Kew Legacy Widows' Club meeting at 11am at Kew RSL Hall, 63 Cotham Road, at 11am. New members welcome. Enquiries: 819 4153 or 859 1663.

Know Your Community lunch at Kew Community House, 6-8 Derby Street, at 11.30am. Guest speaker: Kathy Lambadaridis, senior social worker at Community Services Victoria, who will give advice on pensions and other social security benefits. Stay for lunch for just \$1.50. Enquiries: Kaye Wood, 862 3126.

Boroondara Bushwalkers meeting in Kew Library Complex hall, off Cotham Road at 7.30pm. New members welcome. Enquiries: Jim McLaughlin, 859 5876, after hours.

Camberwell Film Society screening of "Les Belles De Nuit", 7.45pm, Theatre, Camberwell Civic Centre, Camberwell Road. Enquiries: Mrs Catford, 808 6299.

18

Thursday. Kew Branch, Penguin Club, meets at Kew Library Complex hall, off Cotham Road, at 8pm. Enquiries: Margot Harrison, 818 6127.

22

Monday. Kew (Daytime) Garden Club meeting at Kew Library Complex hall, off Cotham Road at 1.30pm. Guest speaker: Frank Date on "Native Orchids" Enquiries: 859 2977.

24

Wednesday. Reminder for Kew Ladies Probus Club members: Trip to Kyneton Bakery.

25

Thursday. Kew auxiliary, Royal Women's Hospital, meets at Kew Library Complex hall, off Cotham Road, at 1.30pm. New members welcome. Enquiries: Mrs Dietrich, 861 6059.

Kew Children's Services Consultative Committee meeting at Strathalbyn Street Maternal and Child Health Centre, East Kew, at 8pm. All Kew parents of young children welcome. Enquiries: Elizabeth Sullivan, 860 5223

For details of Spring Fetes and Fairs and other events, see the Notices column on page four or other feature articles throughout this newsletter.

DATES TO REMEMBER

Kew Primary School is holding an Open Day on Saturday, December 1. Mark this day in your diary now. Further information will be provided in the next issue of this newsletter.

Saturday, November 10: Kew Cottages Fete, Princess Street from 11a.m. Humphrey B. Bear at 11; Zig and Zag 2.30. Hundreds of stalls.

Sunday, November 11: Christmas Carnival at St. Annes's School, Beresford Street, from 11a.m. Stalls, international food, rides.

Tuesday, November 13: Kew Primary School's enrolment day for pupils commencing in 1991, 2pm to 3.15pm. For enquiries ring the Principal, Mr Rod Albury, on 853 8325.

OCTOBER FETES

Pets Parade

East Kew Uniting Church will hold its annual fete on Saturday, October 13, from 9.30am to 3.30pm. Features include a Pets Parade at 2pm, White Elephant and other stalls, morning tea and a barbecue lunch.

For more details contact Mr Clark on 859 1229.

★ ★ ★

Missionary Sisters'

The Missionary Sisters of St Peter Claver at 152-154 Cotham Road, will hold their annual fete on Saturday, October 13, from 9.30am to 4.30pm.

For more details contact Sister Maureen on 817 3715.

★ ★ ★

Devonshire Teas

The Kew auxiliary of the Royal Victorian Eye and Ear Hospital will hold its Mini-Fete on Saturday October 20 from 10am to 3pm at 159 Peel Street, Kew. Devonshire Teas, crafts, plants and cake stalls.

For more details contact Mrs Watters, 817 3584.

★ ★ ★

Strawberry Fair

St Paul's Anglican Church, East Kew, will hold its annual Strawberry Fair on Saturday October 27 from 9am to 1pm in the Church grounds, corner Hale Street and Windella Avenue.

Features include a Children's Dress-Up stall with Batman, Superman and 'Turtle' outfits, handcraft, cakes, gourmet foods and book stalls, Trash and Treasure, face painting, morning teas, strawberries and cream and barbecue lunches. Entertainment by Kew East Primary School students from their October production of "Kids in Space".

For more details contact: 859 1352.

TAKE TEA IN A MONASTERY GARDEN

The Rotary Club of Kew is busily organising 'Open House and Garden' visits for the public on Sunday, November 11.

At one venue, the Carmelite Monastery in Stevenson Street, visitors will be able to take afternoon tea served by the Carmelite Sisters and Rotary Club members and their wives.

According to a Rotary Club spokesman, other venues, yet to be finalised, include buildings of great charm, impressive architecture and historical significance in Kew, as well as several other delightful gardens.

Further details will be published in November Kewriosity and the local and daily press. Kew residents are invited to diary the date now.

DEADLINE —

Copy for the November edition should reach the Municipal Offices by Monday, October 15.

For enquiries on contributions/deadlines, contact the Editor, Olwyn Eaton, on 862 2466.

Commentary

This year, more than any other year since my election to Council, the harsh realities of State and Federal Government micro economic reform have hit home.

That this has happened over the last two months during our budget deliberation is, of course, no accident.

The present Federal Government's eighth budget, brought down in August, left many of the difficult economic decisions up to the States. There are no prizes for guessing that what Victoria's September Budget did, was to pass the buck for these difficult decisions on to Local Government, via each individual member of the community.

At a local level, we've been faced with the possibility of non-expansionary budgets before — last year's budget is the perfect example — but it is a long time since we've been faced with the probability of a reduction in services and a cutback in vital planned expenditure programs such as traffic management.

There are numerous reasons for this, too numerous to mention in a column this size. But so that every one of you understands the enormity of the funding cuts made to us by State and Federal Governments, and some of the other costs which are affecting our deliberations, a general overview follows.

This year we have to take into account in our Budget:

- A 20% decrease in Commonwealth Government funding.
- Late payment of State Grants resulting in a \$50,000 loss in income on interest.
- State Workcare premiums up 47% despite a 40% improvement in our Workcare record over the last year.
- Federal legislation requiring 1% of gross payroll be allocated to staff training resulting in an additional allocation of \$23,000 (more than double).
- Reduction in State Public Library grant of almost 10%.
- A \$7,000 Commonwealth decrease in hostel funding for socially disadvantaged residents.
- A restriction on loan borrowings by the State Government which will affect expenditure on Capital Works in the future.
- An increase in labour costs expected to be 10% for 1990/91 owing to National Wage Case outcomes and award restructuring agreements.
- An expected CPI increase of about 8% for 1990/91.
- Increases in Statutory expenditure — water rates, postage, telephone, electricity — of about 8%.

MEETING DATES —

October 9 Special Committee 7.30pm
 October 16 General Purposes Committee 7.30pm
 October 23 Council 8.15pm

Meetings are held in the Committee Rooms and Council Chamber at the Municipal Offices. Entrance is via the main portico off Cotham Road.

All meetings are open to the public. Copies of agendas are available for consultation prior to each meeting. They are held at the loans desk at Kew Library.

On top of all this we next add the fact that Kew has virtually no cash reserves because we have kept our rate increases to a minimum over the last 10 years by using those reserves.

Unless at some stage we address this issue, we are going to be faced each year in future, with decisions about which services must be cut so as to reduce costs. The question is, whether we as rate payers want to continue with our rates kept below the Metropolitan average*, or whether we are prepared to accept a reduction in the services we have all come to enjoy.

As your elected representatives we have not yet made that decision on your behalf. But so far we have set as a priority for Capital Expenditure in 1990/91, road, footpath and drainage works. We intend to concentrate on the most urgent repairs and maintenance to these infrastructures. While all works are important, some works are urgent and it is the urgent ones that must receive priority.

In any Council year there are matters brought to our attention which are referred for consideration during the Budget period. Many of these are expenditures either planned as future works, such as traffic management and streetscaping, or future possible services. All of these planned expenditures and possible services have already been cut from our budget, yet we are still left with a very real probability of a reduction in existing services.

The next few weeks are crucial and the decisions we make have both short and long term implications for all of our residents. What needs to be stressed is that local communities should not have to bear the significant financial burden thrust on them by State and Federal Governments. We intend to make that burden as light as we possibly can without reducing the quality of community life that Kewites enjoy.

*From figures supplied by the Commonwealth Grants Commission.



ROAD CLOSURE

Kew residents are advised that Kew Council has approved the closure of Kew Boulevard, between Studley Park Road and Chandler Highway, on Sunday, November 25.

The Boulevard will close from 8 a.m. to 11 a.m. for the annual triathlon run by Tri-Sports Promotions, in conjunction with the Triathlon Association of Victoria.

Access to and from Yarra Bend Park, River Retreat and the Royal Talbot Centre, will be maintained by controlled entry during the event.

The Council agreed to the closure on condition that the promoters seek support from Vic Roads and Yarra Bend Park Trust. They are also required to advise Victoria Police and all emergency services, Royal Talbot Centre and residents of Molesworth Street and River Retreat, of the closure.



Cr. Daryl Oldaker, Mayor of Kew.

HARD RUBBISH COLLECTION TO START

Kew Council's second hard rubbish collection for 1990 starts later this month with householders being advised of details via letter box drop.

The hard rubbish collections, held each April and October, are for hard to get rid of items only. These include fridges which will be collected separately from other hard rubbish and will be de-gassed prior to disposal, prunings which must be tied neatly in bundles, and household items such as old furniture or small building materials. Full details of articles which can be disposed of are included in the notice announcing collection dates.

Residents are reminded NOT to dispose of normal household waste through the hard rubbish collection service.

- Don't include normal household waste. This is collected twice weekly by the Council
- Don't include glass bottles and jars, plastic PET soft drink bottles or aluminium drink cans. These are collected from your naturestrip on the first rubbish collection day of the week.
- Don't include paper and cardboard. These items are subject to special collection or can be taken to the Council's recycling depot in Princess Street.

As a gentle reminder, please make sure your household garbage is washed and wrapped before it goes into your bin and make sure you have a sturdy bin with a tight fitting lid. Remember, you may put out as many bins as you like.

- Don't include "sharps" or syringes in your household garbage. The Council has a "sharps" disposal scheme for the safe disposal of these items.
- Don't leave excrement on disposable nappies. Scrape and dispose of it in your toilet bowl and wrap nappies well before putting them in your household bin.

If you have any enquiries regarding hard rubbish or other waste collections, the Council's Engineering Department will help you on 860 5234.

Please keep in mind though that the Council is currently reviewing all its waste management schemes. Details of the review and future plans will be brought to you in further editions of this newsletter.

NOTICES —

School Readiness

Well-known child psychologist, Judith Paphazy, will speak on 'School Readiness' at a Children's Week presentation by Kew Pre-School Association.

The presentation, on Wednesday October 24, will be held at Kew Baptist Church, Highbury Grove, starting at 8pm. Tickets are available from Kew Council's municipal kindergartens at \$5 each. The cost includes a light supper.

More information may be obtained by contacting Jennie deNeefe on 859 1280.

★ ★ ★

KCSCC meeting

Kew Children's Services Consultative Committee is holding its next meeting on Thursday, October 25, at East Kew Maternal and Child Health Centre, 21 Strathalbyn Street, at 8pm.

Parents interested in local issues concerning them and their children are invited to attend. More information may be obtained by contacting Kew Council's Children's Services Officer, Elizabeth Sullivan, 860 5269.

★ ★ ★

Monster Book Fair

Holy Trinity Anglican Church will hold its fourth Monster Book Fair on Friday October 26 from 5pm to 9pm and on Saturday October 27 from 10am to 4pm, in the Church Hall corner High and Pakington Streets, Kew.

Thousands of books, hundred of records, plenty of bargains. For more information contact Charles Harkin on 817 2815 after hours.

REC CENTRE SEEKS INFO FROM OLDER ADULTS

Kew Recreation Centre is looking to expand its programs for older adults, particularly those with disabilities.

The Centre wants to hear from older adults in Kew about their leisure needs and interests with a view to expanding its existing programs and establishing new ones.

To introduce older people to the range of programs currently available, the Centre held an Invitation Day in September. More than 80 people sampled classes in exercise to music, gentle gym, learn to swim and aqua exercise.

Youth and disabilities co-ordinator at the Centre, Ms Sue Wragge, said the Centre aims to cater for all interests and levels of ability. The centre works closely with Kew Council officers, she said and endeavours to meet the needs of residents as they are identified.

Current opportunities for older adults include learn to swim classes, a gentle gym circuit, water exercise classes graded at three levels, walking groups, and exercise to music. Future programs could include dance, self-defence, relaxation and regular social events, she said.

Older adults who would like to indicate their leisure needs and interests, or those who have specific requests for possible programs, should contact Ms Wragge on 861 6177.

COUNCIL CALLS FOR SUBMISSIONS ON SKATEBOARD

Kew Council is calling for written submissions from the community suggesting the most appropriate site for a skateboard facility for Kew young people.

The Council has appointed a committee of councillors to review the sites and the community submissions. Once the review is complete the Committee will make a recommendation to the Council on the most appropriate site.

To assess suggested sites the Committee will look at the type of park and type and level of usage, the distance of the site from residential

properties and the impact of the facility on the environment and heritage of Kew. It will also assess access for young people to the site, all aspects of supervision and safety, and the availability of ancillary services.

Councillors elected to the Committee are Phyllis Hore, Joan Lamb, Allen Martin and Gerry Petrie.

Written submissions on suggestions for the skateboard site will be received until 4pm on Friday, October 26, 1990. They should be addressed to The Chief Executive, City of Kew, P.O. Box 42, Kew, 3101.

Further information may be obtained by contacting the Council's Recreation Co-ordinator, Ms Wendy O'Neill, or the Youth Services Development Officer, Ms Kate Laing, on 860 5223.

KIDS IN SPACE

Kew East Primary School will present its fourth musical production, "Kids in Space", at Kew High School Community Theatre on Tuesday October 23 and Wednesday October 24 at 7.30pm.

"Kids in Space" is a rock musical. It is set somewhere in the future of planet Earth and in the far off reaches of the Black Hole, the mythical home of the Space Pirates and all other lost objects in the universe. The main character, Cumulo, is a member of the futuristic earth family, Nimbus. Cumulo is dissatisfied with life at home and is generally very bored. He finds himself in the Black Hole as a piece of lost property and, together with a number of other lost souls, plots his escape from the dreaded Space Pirates.

Tickets for the production may be obtained by writing to the Ticket Secretary, Kew East Primary School, Kitchener Street. Prices are \$6 adults and \$3 children.

A special matinee for primary and pre-schoolers will be presented on Tuesday October 23 at 1.30pm at the special price of \$2 per child with accompanying adults free.

For further enquiries contact the School on 859 2903.

LIBRARY CORNER

Have you ever left Kew Library dissatisfied because you couldn't find what you want?

Many borrowers find it difficult to locate the resources they need amongst Kew Library's 100,000 items. Kew Library staff recognise this is a problem but are there to help.

The system provided by the Library sorts non-fiction books in subject sequence and fiction books are arranged alphabetically by the author's surname. You can find either author or subject matter in the Library's card catalogue system by checking cards listed under title, author or subject.

Many borrowers see the Library as a self-service institution and find browsing through the shelves or the catalogue, pleasant relaxation. But self-service and browsing can sometimes fail when you are looking for specific information.

Kew Library staff are trained to help you find what you need and are pleased to provide this service. It may be that Kew Library doesn't have what you want, but through access to outside resources and a short wait, can obtain the item for you.

Don't go away from the Library feeling dissatisfied. Seek the help and advice of Kew's trained staff and make the most of Kew Library.



Kew's older adults sample water exercise at Kew Recreation Centre. Photo: Craig Kenny.

RECYCLING TRIAL

Almost 200 households in Kew have begun to trial the collection of recyclable household wastes using 120 litre mobile garbage bins.

The trial is being conducted by Kew Council in conjunction with the Environment Protection Authority and the Plastics Industry Association.

The aim of the trial is to assess whether 120 litre mobile garbage bins are suitable for the collection of recyclable materials. The bins are half the size of mobile bins generally used in rubbish collection.

During the six month trial, about 50 households will separate aluminium drink cans, glass bottles and jars and PET soft drink bottles from their household garbage.

A second group of about 100 households will recycle vinyl and high density plastics such as fruit juice, milk and detergent bottles as well as glass, aluminium and PET plastic. These two groups will continue to receive their twice weekly collection of general household waste.

A third group of about 50 households will add plastic wraps, plastic bags and paper and cardboard to their recyclables. They will also trial a second 120 litre mobile bin for general household rubbish.

As part of the trial, participating residents will be contacted by a market research firm to assess their attitudes towards recycling and the effectiveness of the 120 litre bin system.

Kew's Mayor, Cr Daryl Oldaker, said the Council and other trial organisers want to know if the 120 litre mobile bin system is an easy system to use, how much can be recycled in the mobile bins compared to existing systems, and how much the new system costs.

"We want to find out whether this is a system the City should adopt, whether if it is adopted it should be done in conjunction with our existing rubbish collection, or whether another wheeled bin for general rubbish should be provided.

Evaluation of the project has important implications for recycling and the minimisation of waste going to landfill", Cr Oldaker said.

For the residents who have agreed to trial the scheme, their co-operation in using the bins and their participation in consumer research being conducted, will do much to keep us and industry improve our care and re-use of resources, he said.

KEWRIOSITY —

Kewriosity is a local newsletter combining Kew Council and community news. It is produced and published by Olwyn Eaton, Information Officer for the City of Kew.

By producing the newsletter, Kew Council aims to provide you with a range of interesting and informative articles covering its deliberations and decision making. It also includes items of general interest and importance to the Kew community and information not generally available through daily media outlets. Enterprises, organisations, institutions and individuals are welcome to submit articles for publication or can contact Mrs Eaton to assess the suitability of articles for inclusions.

Kewriosity is delivered monthly to every property in Kew, usually by community groups who use the deliveries as a fundraiser. If you do not receive your regular copy contact Olwyn Eaton on 860 5204 or 862 2466.

Kewriosity is printed by York Press, 61-63 Burnley Street, Richmond, 3121. Telephone: 427 9700.



THE PLAY'S THE THING

Amateur theatre group, Track Players, are storming their way to artistic success since relocating to Kew in December last year.

Track's children's production, The Plain Princess and the Lazy Prince and a teenage workshop of three one-act plays, drew excellent audiences during July and August.

According to the play's producer's, Ed and Maureen Bailey, the audiences showed great appreciation for the young player's talent and good ticket sales helped to swell Track's dwindling coffers.

Track Players president, Ann Grant, said The Plain Princess and the Lazy Prince was quite a feat for all involved — players, parents and production crew. Looking at it from a backstage point of view she said, "Imagine trying to keep a cast of 45 children aged between nine and fourteen, quiet. Let alone get them into make-up and costumes, get them on stage and quietly, and keep them quiet between on stage scenes. Add to that 22 scene changes and squillions of

All smiles and a happy ending for Andrew Costello and Anne Wilson in Track Players production of The Plain Princess and The Lazy Prince. Photo: courtesy Track Players.

lighting and sound cues and you have an enormous task ahead of you", she said.

But this year, as in the past, both young people's productions have been well worth the effort. "To see the looks on those children's faces as the curtain closes after the bows, is reward in itself", Ms Grant said.

While it has taken awhile for Kew audiences to get to know the quality of Track Players work, Ms Grant says the group anticipates good audiences for its November production of The Women. "If response to auditions for the play is any guide, we're set for a very successful artistic and financial season", she said.

The play's producer, Gordon Dunlop, had an overwhelming 75 people audition for parts in The Women which starts at Kew High School community theatre on November 15.

The season runs from November 15 to 17 and again from November 22 to 24. Performances start at 8.15pm. Bookings may be made by phoning Marion Egerton on 509 2980.

ST GEORGE'S TO MEET AGED CARE NEEDS

St George's Hospital, Kew, has welcomed the State Government's proposal to become a multi-campus public community hospital.

In a report released last month, the Health Department proposed amalgamating St George's public hospital with Victoria Parade Geriatric Centre. Others to form the multi campus hospital are Camberwell and Hawthorn day hospitals, Camberwell and Northcote day centres, and Kew's Henry Pride Unit of Mount Royal Hospital.

The report says all sites would retain their names and services, though an option exists for the Henry Pride Unit to relocate to new purpose built facilities on the St George's site.

The proposed community hospital would serve the suburbs of Kew, Hawthorn, Camberwell, East Melbourne, Collingwood, Fitzroy, Richmond and Northcote.

The executive director of St George's, Mr Malcolm Kinloch, said the merger would help meet the needs of an increasing elderly population in the inner east area. "The seven

municipalities in the catchment area have declining populations. But they have about twice the proportion of people aged 70 or more than in other areas of the north eastern metropolitan region", he said.

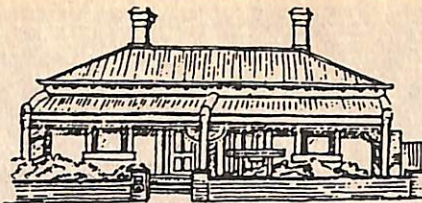
"The community hospital would provide a more cost-effective use of resources and improved viability of the geriatric assessment teams. It's an effective solution to the aged care needs of the region", he said.

Mr Kinloch said the Health Department's concept arose after a series of public meetings across the inner east region. These identified the need to establish an integrated geriatric service. Some areas were missing out on geriatric assessment services altogether, people had to travel considerable distances from their homes to get to services, and service provision was uneven. Some services were overloaded with patients while others were less than viable, he said.

The new community hospital will continue to offer its obstetric and paediatric services as well as acute medical and surgical services. Geriatric assessment and rehabilitation, short term residential nursing home care and day hospital and day care programs will also be provided.

Kew residents can submit comments on the proposal. Submissions in writing to the Health Department will be accepted until October 31.

KEW COMMUNITY HOUSE



6 DERBY STREET, KEW, VIC. 3101
Telephone: 862 3126

Co-ordinator: Kaye Wood

Why should you be a member of Kew Community House?

Well the answer's quite simple. Membership gives you a say over what goes on here and allows you to determine the direction in which the House should go.

For the past few years we've been running short courses centred around crafts and leisure, basic education, and English for Migrants. We've done so because that's what our research told us the Kew community wanted.

But should we continue to do these things, or is it time for the House to change direction? Only you can tell us and only you can contribute your innovative ideas and sense of purpose to all that goes on here.

Recent research published by Community Services Victoria shows the changing face of the Kew community. We're a small population alright but we're on one of the most dynamic in the inner metropolitan area.

We have a growing number of one person households, an extremely mobile and ever changing population of people renting, a growing number of working parents, and an ageing population, all of whom need to have their educational, leisure and recreational interests catered for in Kew.

Unlike many other organisations and institutions, our hours are not restricted. We can run programs during the day and in the evening at hours that suit the widest range of people. We have child minding during the day now, but perhaps we need to look at child minding at night in the future. Or maybe we need to start up a babysitting or childminding club for parents who

want to use the House in the evenings.

So that's why membership of the House is important to you, because it gives you the opportunity to decide in which direction the House should go from now on.

Let me stress what a real advantage this is. You may not know that in many organisations and institutions, users are the last people to be consulted about what program it is that they want.

Not only that, but many resources don't offer the informal, relaxed and uncomplicated atmosphere we offer here at our House. Neither are they located in such a compact community where travel from one side of Kew to the other takes a matter of minutes. Many don't have childcare on offer either, nor costs that are so low.

Many don't offer the opportunity for you to come as a volunteer to our House so that you gain confidence in your abilities and perhaps take away some real skills back to the workforce. Many don't help you sort out where you are in your life or help give you direction to go on to the next stage.

And many don't give you the chance to share all of your skills, some of which you don't even realise you have. By sharing your skills and by being involved in running courses at the House, you acquire new skills and confidence as a community educator — a voluntary job that could catapult you into a new career later on.

So why not join us for our annual general meeting on Thursday, October 11 at 7.30pm and tell us you'd like to be part of our House and all that goes on here? We look forward to seeing you then.

KEW INFO YOUTH

If you're young, feeling vulnerable and want access to information in a non-threatening atmosphere, where do you go? You head for Kew Info Youth, of course.

Kew Info Youth is a newly introduced young people's information service based at the Youth Resource Centre at 10-12 Derby Street.

Open every Wednesday afternoon from 2pm to 6pm, Kew Info Youth offers a comprehensive range of information and resources, specially written for young people, on topics such as health and sexuality, housing and counselling.

It has relevant, useful and up-to-date information on young people's rights, especially in relation to employment and the law. And it has advice on recreation and teenage holiday programs. If the information you want isn't there, talk to Sue or Kate and they will either get it for you or let you know where you can go for help.

If you have to make a few decisions and you don't know where to go for help, start by calling in to the Youth Resource Centre on Wednesday afternoons. You can ring Kate Laing for more information on 860 5223.

HAWTHORN HISTORY

Hawthorn Council has commissioned a 100,000 word history to commemorate its centenary in 1992.

The history will be researched and written by two research assistants from the National Centre for Australian Studies at Monash University.

According to the researchers, Miss Victoria Peel and Ms Deborah Zion, one of the most important functions of the history is community input.

Many Kew residents have close links with Hawthorn and Miss Peel and Ms Zion want to hear from anyone with historical photographs of public, family or community life in Hawthorn, as well as people with information which could help in their research.

Interested residents can contact the researchers by ringing 565 5241.

SCHOOL CELEBRATES WITH SONG AND DANCE

For almost 300 youngsters at Kew Primary School it was a night to remember. The night they sang and danced their way into the hearts of parents, teachers and guests at the School's 80th birthday celebration ball.

The ball, held at Collingwood Town Hall on September 13, involved every child at the school and saw more than 500 guests in attendance.

Kew Primary schoolers spent a full term preparing their program of traditional songs and ballroom dances under the keen eye of Miss Alma Quon, a well-known teacher of children's dance.

Anne Roubin, spokesperson for the School, said the evening was a most suitable way of celebrating the School's 80th anniversary because school dances and dance displays used to be the traditional way of celebrating special occasions back at the turn of the century.

She said the 80th birthday ball provided an opportunity for every family with children at the school to be involved in a way that was entertaining, enjoyable and memorable. The children discovered new talents and developed relationships and a greater respect for each other. They also enjoyed participating in something totally different. The evening was one never to be forgotten, she said.



Dancing in the old-fashioned way are Kew Primary School students who celebrated the school's 80th birthday last month.

CONNECTING COMMUNITY WITH DISABILITY

For people with intellectual disabilities, Citizen Advocacy may be their only connection to the mainstream of community life.

Citizen Advocacy encourages ordinary people to spend some of their time and energy building a one-to-one relationship with a person who has an intellectual disability.

The scheme gives local people the chance to get to know someone they would not normally meet, to step into their shoes and to see life from their point of view. It helps make the community more aware of the needs and aspirations of people with disabilities.

Citizen Advocacy strengthens the community, not by theories or politics, but by actions in ordinary situations, in speaking out, and in one-to-one friendships.

The concept of Citizen Advocacy is based on the assumption that all people have the right to be included in the life of our community.

There are many ways for people in Kew to support Citizen Advocacy. These include becoming a citizen advocate for someone with an intellectual disability, a member of the local committee of management, or a resource person to support, listen and care about Citizen Advocacy and the varied ways it responds to people's needs.

If you are interested in discussing the possibilities further, call Kathy or Dot on 859 9421, or call in to Citizen Advocacy Inner East at 11 Strathalbyn Street, East Kew.

BOLD AS BRASS

At the August Royal South Street (Ballarat) Championships, Kew Band won the concert program section while brass soloist, Jack Kelly, took out the coveted Champion of Champions award.

The titles followed a successful weekend with the Eaglehawk Band in Bendigo in August. The bands combined for a brass and percussion workshop and concert.

Also in the news are band members Stephen Hardie, percussion, and Melissa Lee, french horn. They've recently been touring with the Victorian Youth Orchestra.

Kew Youth Band is progressing well and is maintaining a membership of about 30, Band spokesperson, Jack Kelly, says a musical evening last month saw youth band members, some of whom have only been playing eight or nine weeks, presenting solo items.

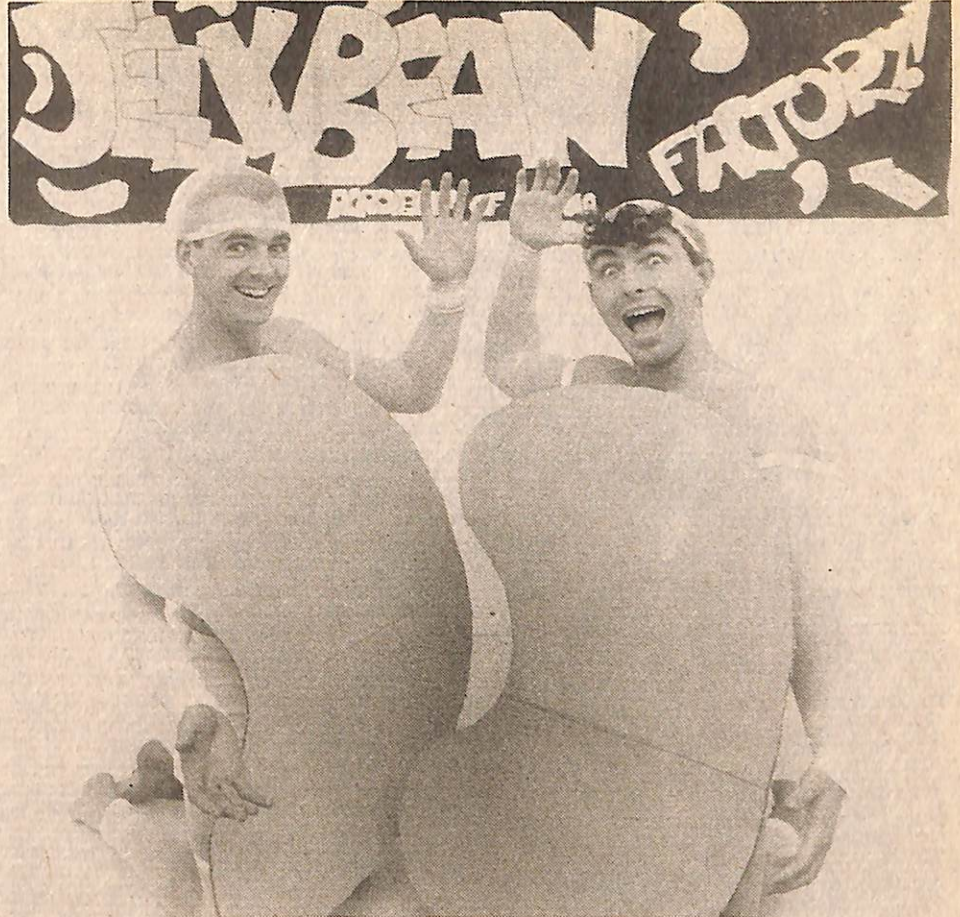
Both senior and youth bands will take part in the Musicmakers Concert at Kew High School on Sunday, October 28. Keith Callinan can provide more details on 887 0630.

COMMUNITY CLEAN UP

Kew Council has offered to help the Melbourne and Metropolitan Board of Works organise its Bay Rivers Community Clean Up Day on Sunday, November 18.

The Council will help the MMBW by advising local groups of the event, by removing any rubbish collected from within Kew and by providing a council officer as liaison between the Board and community groups.

Individuals and community groups who would like to join in the Community Clean Up should contact the Council's Works Engineer, John McCarthy, on 860 5234.



Drama teachers, Chris Egan and Phill Cristofaro, who'll be teaching 'real pretending' to local youngsters at Kew Primary School Hall, starting this month. Photo: Andrew Batsch, courtesy Progress Press.

JELLY BEAN DRAMA

Children's drama teacher, Chris Egan, says drama is a medium children use naturally to make sense of their world. The use of drama, or "real pretending" as it is often called, is a very important stage in a child's personal development, he says.

Drama develops a child's ability to experience and understand the world from many different points of view. It encourages the child's reasoning and problem solving skills by allowing the child to step into another person's shoes. And it focuses on the child's individual responses to various situations. Nothing the child does is either right or wrong, but is a process of self evaluation and improving on what they've done before.

Mr Egan, 23, and a trained primary school teacher, specialises in children's drama. With his partner, Phill Cristofaro, he runs The Jelly Bean Factory, a drama academy for children aged five to 12 years. Both Mr Egan and Mr Cristofaro are full time primary school teachers, but they run the academy in their out of school hours.

From October 23, The Jelly Bean Factory and Kew Primary School, are collaborating to run drama classes for primary schoolers in the Kew area. The classes, which will run for eight weeks, are of one hour's duration. They will be held on Monday and Thursday evenings and Saturday mornings, at Kew Primary School hall in Peel Street.

The drama classes are divided into four different activity segments — role play, movement and dance, puppetry and masks. Through role play the children take on several characters and visually and verbally explore feelings by stepping into others' shoes. They may become a dentist,

an elderly citizen, or a schoolteacher. Or they may solve problems such as looking after a sick relative, or resolve a situation seen by them previously as being quite difficult to handle.

Through movement and dance they are encouraged to explore movement and space through different musical styles and tempos. A fundamental component of this unit is mime — a dramatic art form using body movement rather than speech or sound to express feelings and actions.

According to Mr Egan, one of the most powerful units in the course is the use of dramatic masks. The children are encouraged to become the character whose face or mask they wear. The emphasis is on creating emotion through body movements, rather than relying on facial expression. With the use of soft lighting, Mr Egan says the performances are very stimulating to watch.

The final segment, puppetry, is an exciting activity where the children control the movements and voice of stick, glove and finger puppets to depict dramatic events and interactions. Their healthy imaginations and lack of inhibitions act here as a great medium for self expression, Mr Egan says.

Parents and children interested in The Jelly Bean Factory's classes are invited to attend an information and activity session with FREE barbecue lunch. The session will be held on Sunday October 14, between noon and 3pm, at Kew Primary School. For catering purposes please let organisers know by Friday, October 12, that you and your family will be there.

Phill Cristofaro will help with rsvp's, enquiries or class bookings on 386 2451.



Mrs Ella Hensell unveils a portrait of her husband, Ray, at Kew Bowling Club's season opening in September.

BOWLING CLUB HONOURS MODERN BOWLS INVENTOR

At the opening of its greens on September 1, Kew Bowling Club paid tribute to its former president and developer of the modern lawn bowl, the late Ray Hensell.

Mr Hensell was president of Kew Bowling Club in the 1958/59 season. He is credited with developing today's plastic 'Henselite' lawn bowl, used worldwide.

Ray Hensell was the son of W.D.Hensell who first developed the hard rubber or vulcanite bowl. This replaced, early this century, the hard wooden bowls used at least since the time of Sir Francis Drake and the Spanish Armada.

The vulcanite bowl invented by W.D.Hensell was in use until the late 1930's when he and his son Ray, developed the modern plastic bowl. To honour Ray Hensell and his legacy to lawn bowls, Kew Bowling Club invited his wife, Ella, to a special ceremony to unveil her husband's portrait.

Mrs Hensell was joined by the Mayor of Kew, Cr Daryl Oldaker and his wife Patricia, members of the Royal Victorian Bowls Association, Kew Bowling Club and Hensell family members, Bruce, Jennie and Graeme.

Kew Bowling Club offers free tuition to new members who may make further enquiries by telephoning 853 9650.

HAWTHORN CENTRE OPEN DAY

Like it or not, society still stereotypes and stigmatises people with mental health problems.

While a person's physical ailments are discussed openly and an abundance of information about physical health is available in our community, the same cannot be said in relation to mental health.

A local resource which is aiming to break down the barriers is the Hawthorn Community Mental Health Centre.

On October 24 the Hawthorn Centre, as it is widely known, is holding an Open Day for residents of Kew, Hawthorn and Camberwell.

The Centre, at 642 Burwood Road Hawthorn, has arranged a series of talks, videos and displays which will run from 10am to 4pm. Visitors to the Centre will also have the opportunity to talk to psychologists, psychiatrists, community psychiatric nurses and social workers.

Morning and afternoon teas and lunches are available at very reasonable prices at the Centre's cafeteria. A timetable of talks and special events is available by phoning 882 9299.

The Hawthorn Centre is a community-based mental health service funded and staffed by the Health Department of Victoria. Opened in August, 1988, it is part of an expanding network of community-based treatment and rehabilitation services provided by government and non-government agencies in the eastern suburbs.

Anyone who lives or works in Kew, Camberwell or Hawthorn is eligible to use the FREE and confidential services provided at the Centre. Formal referrals are not required and many clients are referred by friends, family or relatives.

Community-based agencies such as citizens' advice bureaux, local counselling services or general practitioners also act as informal referees. Clients themselves are encouraged to ring or call in to make an appointment time.

Services provided by the Hawthorn Centre include assessment, treatment and rehabilitation. This may include individual, couple or family counselling; training in independent living skills or social and vocational skills; and practical assistance with accommodation, financial management, and choosing creative leisure activities.

The Centre, which provides outpatient services, is open Monday to Friday from 9am to 5pm. Outside these hours, staff provide a service via an on-duty roster accessed by telephoning the above number.

COMMUNITY LEISURE

Kew Leisure Network has applauded Kew Council's initiative in trying to raise the profile of recreation providers in the local area.

A spokesperson for the group said the Council's new community leisure brochure would do much to encourage people to try new forms of leisure in and around Kew.

The Kew Leisure Network was formed in August with the aim of improving the co-ordination of local leisure activities and avoiding duplication of leisure programs.

The Network wants to create an awareness of leisure issues among group members, co-ordinate information provision on leisure for the local community, and reach a clearer understanding of the individual goals of member leisure providers.

Organisations represented in the network are the community house, recreation centre, recreation integration group, youth resource centre, senior citizens' centre, and Kew Council.

LETTERS TO THE EDITOR

From B. Giles, (address supplied)

Your correspondent (Kewriosity, September edition) who calls for bonfires, must live in one of the more spacious areas of Kew.

Where I live, my small backyard is impinged upon by three others and their (fortunately) infrequent fires fill my house with fumes. Even a barbecue can set me looking for what's aight.

For years, one neighbour burnt an indiscriminate variety of rubbish, including plastics, because of a language difficulty. Their great kindness otherwise, I did not complain, but was very glad when the burning ceased.

Making a fire is fun. But it is a fun I do not indulge in under my neighbour's noses.

★ ★ ★

Women's Health (name and address supplied)

Re Women's Health for Over 55's, September Kewriosity

From personal experience this month and again about three years ago, there is nowhere one can go for help in changing a daily medical dressing.

Monitoring and changing dressings on a potentially more serious infected wound is almost impossible as one gets older and eyesight deteriorates. I discovered that the nearest Royal District Nursing Service outlets are at Camberwell and Box Hill when I phoned for advice.

Since I am quite capable of getting around, I feel reluctant to ask my general practitioner for a referral for the district nurses to visit.

What is needed in Kew is a part time minor ailments clinic with a trained sister on duty — someone who is available when our GP'S are off duty. I worked at several such clinics in London when on a working holiday many years ago.

THE BOYFRIEND

The Phoenix Music Club will present the smash hit musical, *The Boyfriend*, in a four night season starting on Wednesday, October 10.

The production is being staged in Kew at the Melbourne University's School of Early Childhood Development, in Madden Grove. Performances start at 8p.m. Ticket prices are \$12 adults; \$10 concession; and a group discount for 20 seats or more. Bookings on 497 3592 (business) or 383 6830 (after hours).

Practice makes perfect for budding actors in the Phoenix Music Club's production of "The Boyfriend".

