

KEWRIOSITY

City of Kew, Municipal Offices,
Charles St., Kew. 3101. Telephone 862 2466

DECEMBER 1989

NEW CHIEF EXECUTIVE FOR KEW

Kew Council has announced the appointment of Mr Malcolm Hutchinson as its new Chief Executive Officer and Town Clerk.

Mr. Hutchinson, 36, will take up office in February 1990. He is currently the Federal executive director/secretary of the Institute of Municipal Management and executive director of the Institute's Victorian Division.

Mr. Hutchinson's extensive local government experience includes various positions with the cities of Richmond, Malvern and Maryborough.

The Mayor of Kew, Councillor Michael Montalto, said "We are very pleased to have appointed an applicant with the experience and understanding of Local Government that Mr. Hutchinson has. We look forward to the leadership that he will bring to Kew."

COUNCIL OFFICES RELOCATION

As reported in last month's Kewriosity, Kew Council will establish a temporary office in Kew Library Complex hall from Monday, December 18, until the end of January, 1990.

The temporary office, which is at the car park end of the Library building, will deal with routine enquiries and requirements while asbestos is removed from the ground floor ceilings of the Charles Street building.

The new office will close at 2pm on Friday December 22 and will re-open after the Christmas break at 8.45am on Wednesday, December 27.

It will be open for business between 8.45am and 5pm (cashier's desk until 4.30pm) until Friday, December 29 and will re-open after the New Year break on Tuesday, January 2 at 8.45am.

RATES REMINDER

Kew ratepayers are reminded that their first rate instalment for 1989/90 falls due on December 31, 1989.

Payment may be made at the cashier's desk in the Charles Street building until Friday December 15 at 4.30pm and after that date at the temporary Council offices in Kew Library Complex hall at the car park end of the Library building.

The temporary office will be open for payment of rates from Monday, December 18 at 8.45am until Friday, December 22 until 2pm, and again from Wednesday, December 27 until Friday, December 29, from 8.45am to 4.30pm.

Residents are reminded that failure to pay the first instalment by the due date means that interest at the annual rate of 20 per cent will be charged from December 10, 1989 — the date the rates became due and payable. The interest charge is a requirement of the Local Government Act.



*A young child from Dame Mary Herring Centre in Armadale experiences "Sensing the Seasons" with performer, Sybella Drake. "Sensing the Seasons" was written, produced and performed by performing arts students at the Northern Metropolitan College of TAFE, Preston Campus, during Children's Week in Kew in October.
Photograph: Jan Bottcher.*

INSIDE:

CHRISTMAS SERVICES, DATES	2
JUNCTION STUDY	3
HOLIDAY PROGRAMS	4,8
GARDENS PROJECT	5

Dates for December

In this column it is not possible to list the date of every meeting and function held in Kew. Readers are advised to check the short feature articles throughout the newsletter which provide such details, or the notices column on page four.

- 11** Monday. East Kew branch of the Australian Labor Party, final meeting for the year at St. Paul's Anglican Church, corner Hale Street and Windella Avenue, at 8pm. New members welcome. Enquiries: Betty Champion, 859 6494.
- Monday. Area H44 Neighbourhood Watch meeting at St. Paul's Anglican Church, corner Hale Street and Windella Avenue, at 7.30pm. New members welcome.
- 13** Wednesday. Camberwell Film Society's last meeting for the year. "Steamboat Bill Jnr", plus shorts. Enquiries: Jean Catford, 288 6299.
- 20** Wednesday. Boroondara Bushwalkers meet at 8pm in the meeting room, Burnley Plant Institute off Swan Street (note change of venue). Winners of Club's photographic competition will be announced. Enquiries: Jim McLaughlin, 859 5876 (after hours) or Thelma McManis, 817 5548.
- Wednesday. Children's immunisation session at East Kew Maternal and Child Health Centre, 21 Strathalbyn Street, from 9am to 10.30am. Note: measles/mumps/rubella given only between 9am and 10am. Enquiries: 859 1380.
- 21** Thursday. Kew Legacy Widows' Club meets at Kew RSL Hall, 63 Cotham Road, Kew, at 11am. Enquiries: 817 5097 or 859 2097.

January 1990

- 10** Wednesday. Kew Ladies Probus Club members note: lunch at Fairfield Boathouse.
- 17** Wednesday. Boroondara Bushwalkers informal barbecue in Alexandra Gardens at 6.30pm. Ideal opportunity for potential new members. Enquiries: Jim McLaughlin, 859 5876 (after hours) or Thelma McManis, 817 5548.

CHRISTMAS SERVICES

Anglican

Kew: *Holy Trinity, High Street, 24th Dec. — 11:30 p.m.; 25th Dec. Eucharist — 8:00 a.m. & 10:00 a.m.

St. Hilary's, John Street, 24th Dec. — 5:00 p.m. & 7:00 p.m. (Carols) & 11:30 p.m. (Holy Communion); 25th Dec. — 9:00 a.m. & 10:30 a.m..

East Kew: *St. Paul's Windella Avenue, 24th Dec. 8:a.m., 10:00 a.m. & 11:30 p.m.; 25th Dec. — Holy Communion 8:00 a.m. & Sung Eucharist 10:00 a.m.

Baptist

Kew: *Highbury Grove, 24th Dec. 10:30 a.m. & 7:00 p.m.; 25th Dec. 9:30 a.m. (combined with Uniting Church, Kew, in the Uniting Church)

East Kew: *Woodlands Avenue, 24th Dec. 9:30 a.m. & 11:30 a.m. (Cantonese) & 7:00 p.m.; 25th Dec. 9:30 a.m.

Catholic

Kew: *Sacred Heart, Cotham Road, 24th Dec. — 7:00 p.m. (Carols), 7:30 p.m. (Sung Mass), 9:30 p.m. (Carols), & 10:00 p.m. (Dutch); 25th Dec. — 8:00 a.m., 9:30 a.m. & 11:00 a.m.

East Kew: *St. Anne's, Beresford Street, 24th Dec. — 7:30 p.m. (Family Mass); 25th Dec. — 9:00 a.m. & 10:30 a.m.

Church of Christ

East Kew: *Highbury Grove, 24th Dec. — 10:30 a.m.; 25th Dec. — 9:30 a.m. (combined with Kew Baptist in Uniting Church)

East Kew: *Normanby Road, 24th Dec. — 10:30 a.m. & 11:30 p.m. (Holy Communion); 25th Dec. 9:00 a.m.

CHILD HEALTH SERVICES

Until December 22, Kew's Maternal and Child Health Centres will operate normal services.

The Centres will be closed from close of business on December 22, until Thursday, December 28 when Strathalbyn Street Centre will be open for normal services.

On Wednesday, December 27 parents can seek telephone advice from Peel Street Centre on 861 9466 and on Friday, December 29 from Denmark Street Centre on 861 9835.

Normal services at all three centres will resume from Tuesday, January 2.

HOLIDAY WASTE DISPOSAL SERVICES

With the exception of Christmas Day, Monday December 25, household garbage collections by Kew Council will remain the same as usual.

Householders who normally put out their garbage for collection on a Monday should note that there will be no replacement collection and they should, instead, put out their garbage on their normal second collection day of that week.

Glass bottles, jars, aluminium cans, plastic PET bottles (with a black base), paper and cardboard, can be deposited at Council's Recycling Centre every day except Christmas Day. The Centre, at the Council Depot in Princess Street near the Chandler Highway, is open on weekdays from 8am to 3pm and on Saturdays, Sundays and all public holidays except Christmas Day, from 10am to 2pm.

Bottles, jars and aluminium cans can also be left out for collection on the first garbage collection day of the week. They should be placed in the bags provided by Council and be left on the naturestrip before 6am on collection day.

Householders with queries about garbage collection should contact the Council Depot on 861 5148.

For out-of-hours attention during the holiday break, residents with garbage or other problems normally dealt with by the Engineering Department, should ring 543 6333 and ask for pager number 10712.

Out-of-hours by-laws problems can also be dealt with by contacting the above telephone number and asking for pager number 10710.

CAROLS BY CANDLELIGHT

Kew's popular community Christmas celebration, *Carols by Candlelight*, will be held in Petrie Square, Kew Municipal Offices (cnr Cotham Road and Charles Street), on Sunday 17th December, commencing at 8.30 p.m.

Kew's award-winning band, Kew Band, will lead the carols, and the singing will be lead by the Tongan choir. A travelling drama group, Covenant Players, will present a modern rendition of the Christmas story. Carol booklets and candles will be on sale, with proceeds going to the Kew High School Chaplaincy Fund.

The occasion is an ideal opportunity for guests to sit on the grass. Other residents however, may wish to take folding chairs, rugs, cushions, and even some insect repellent to add to their comfort.

Organised by the Kew Minister's Fraternal, *Carols by Candlelight* offers a great opportunity for a community expression of the love, hope and peace of the Christmas story. The Fraternal invites all residents, and particularly the children, to join together for this special event, and wishes everyone a happy and holy Christmas.

Details of Christmas services are listed opposite.



Commentary

The Christmas-New Year holiday period and break from Council and committee meetings, is a time when, as councillors, we look at what we have achieved in the past year and where we are heading in the year ahead.

In 1988/89 we presided over changes to a corporate style administration, we grappled with the problems of budgeting for 1990 services in a climate of tight economic restraint, reduced funding and higher than expected outputs not of our making, and we saw the completion of some of our most important past projects — the highly successful Kew Recreation Centre to name just one.

On the threshold of 1990 and the next decade, we'll be taking time to ask ourselves what it is we value about Kew and how we would like to see the City develop in the years ahead.

I say this because under the guidance of the City's new chief executive officer, Mr Malcolm Hutchinson, we'll be concentrating on issues that

will affect the ability of the City to meet the future requirements of its residents.

We'll be developing our forward planning strategies for the next few years, town planning and strategic planning initiatives for the 90's, and will be making decisions on conservation guidelines as a result of the review of the Kew Conservation Study and planning strategies as a result of the Kew Junction Study.

Consultation with the community has always been and still is a major priority for Council and we want to hear your views on issues which concern you.

We are keen to make sure deliberations on your behalf give the Kew community a city which maintains its residential character, but at the same time, strikes a balance in the development of its commercial, office and retail sectors.

At this special time of the year I want to take the opportunity to wish you and your family a happy, healthy and safe Christmas and New Year.



Cr. Michael Montalto, Mayor of Kew.

MEETING DATES

December 12 Council — 8.15pm
February 6 Standing Committees — 7.30pm
February 13 General Purposes Committee — 7.30pm
February 20 Council — 8.15 pm

Meetings are held in the Committee Rooms and Council Chamber at the Municipal Offices in Charles Street and all are open to the public. Copies of agendas are available for consultation in the Kew Library prior to each meeting.

There are no Committee or Council meetings scheduled for January. The February round of meetings will be advertised again in the next edition of Kewriosity.

KEW JUNCTION STUDY

Increased pressures for office development and the impact this could have on surrounding residential areas has prompted the commissioning of a study of the Kew Junction area by Kew Council.

The study will look at possible office development, traffic flow and parking problems, all of which impact on the residential areas surrounding the Junction.

The Kew Junction Study is the first stage of a longer strategy looking at future development in each of Kew's commercial centres.

Initially the Council will seek ideas and opinions from shoppers, residents and traders at the Junction. Replies will then be analysed by a consultant engaged to highlight future options.

In February 1990 the Kew community will be asked to respond to those options before the Council decides on appropriate guidelines for the future of the Junction.

Enquiries can be directed to the Manager for Planning and Development at Kew Council, Ms Janet Dore, on 860 5214.



KINDERGARTEN PLACES

Two Kew kindergartens have places which need to be filled for the 1990 school year.

Davis Street Kindergarten in Kew and Glass Street Kindergarten in East Kew both have vacancies in their four year old sessions.

Interested parents should contact Sally Debenham at Davis Street on 817 1492 until December 20 or Susan Grover at Glass Street on 859 6049 until December 22.

After these dates parents should contact Council's Community Services Department on 862 2466.



NEW IMMUNISATION PROGRAM

A new program to protect all Victorian schoolchildren from infectious childhood diseases has been introduced.

Under the School Entry Immunisation Program, parents of children enrolling in primary school from 1990 will be asked to present an immunisation certificate. This will indicate immunisation status for polio, measles, mumps, diphtheria and tetanus.

Immunisation will not be compulsory. Parents will be able to make a conscientious objection.

In the event of an outbreak of polio, measles or diphtheria in a school, parents of children who have not been immunised would be asked to keep them at home.

Immunisation in Australia has been so effective that some people have developed a complacency or scepticism about the need for continuing such programs.

There is concern that an increase in the number of non-immunised children may lead to outbreaks of childhood diseases.

Parents whose child has been fully immunised by Kew Council may bring a copy of the child's maternal and child health record book for an over-the-counter certificate.

For other enquiries regarding immunisation or the school entry program, contact Council's Health Surveyor on 862 2466.

KEW STAFFER FOR CAMBERWELL

One of Kew's longest serving staffers is to leave the Council after almost 30 years continuous service.

He is Rate Collector, Mr Bruce Smith. Mr Smith, 51, began his career with Kew Council in 1960 as assistant rate collector after serving six years at the City of Camberwell. In 1967 Mr Smith was promoted to Rate Collector.

Ironically, almost 30 years later, Mr Smith will rejoin Camberwell Council as its Rate Collector. Mr Smith leaves Kew Council on December 8.

MEETING PLACE SUSPENDED

Letters advising the temporary closure of Kew Library Complex hall have been sent to local community groups by Kew Council.

The hall is about to become the Council's temporary office while asbestos is removed from the ceilings of the Municipal Offices. The hall will not be available for community group hire until after the end of January.

Council's records officer, Mr Chris Moutafis, can help groups looking for alternative meeting places during the hall closure. Telephone: 860 5203.

NOTICES

Book Mini Sale

Kew residents are reminded that the Friends of Kew Library will not hold any more book mini-sales until Sunday, February 18.

Christmas Cards

Sale of Christmas cards by the Kew auxiliaries of St. George's Hospital and the Royal Victorian Eye and Ear Hospital, cease on Friday, December 15.

Until then the cards are available from a stall in the foyer of Ed Credit, 222 High Street, Kew. The stall is open from 10am to 4pm each Tuesday to Friday until December 15.

For more information contact Mrs. Reed on 817 4671.

Cards and Gifts

Kew Cottages' and St. Nicholas Parents' Association have Christmas cards, wrapping paper, calendars and gifts for sale to help raise funds for Kew Cottage residents.

For more information or a colour brochure contact Mrs. Mary Dyson on 808 1633.

Apology

Highbury Grove playgroup had to delay its annual laminating day at Kew Community House last month and was unable to notify Kewriosity in time for changes to the November edition.

The group sends its sincere apologies to anyone who went to the House on November 11 expecting the group to be there.

Youth Adventure Camp

St. Hilary's Anglican Church in John Street, Kew, is holding a youth adventure camp at Halls Gap in the Grampians, from January 13 to 19.

The camp, called Exodus 1990, is aimed at teenagers aged 15-19. Activities include camping, abseiling, rock climbing, canoeing, sailing and hiking.

The camp, run by very experienced leaders, costs \$125 which includes transport and all meals.

Application forms and further information are available from Andrew Wallace on 817 4513.

COMMUNITY GRANTS

Seven Kew community groups were successful in their applications for community support and development grants for 1989/90.

They were Kew Arthritis Self-Help Group, Keriva Counselling Service, Kew Community House, Kew Recreation Integration Group, Woodlands Avenue Playgroup, Highbury Grove Playgroup and North Kew Kindergarten.

Applications for the grants were heard in October by the full committee of Kew Community Action Group which administers the grants.

Chairperson of the Group, Ms Rhonda McCaw, said "We found allocating the \$13,766 allotted to us very difficult, particularly because this year's allocation was a drop over last year's. We felt the amount of money available was inadequate, considering the very worthwhile submissions made to us".

Ms McCaw said the lower allocation of funds to Kew came about because the overall State budget allocation did not cover the increase in the consumer price index, new census figures used to assess needs-based indicators for Kew dropped from 8.5 per cent to six per cent, and the allocation of funds to regional groups was boosted to 15 per cent.



CHILDREN'S HOLIDAY PROGRAM

Pre booking for Kew Council's Children's Holiday Program means parents can plan well ahead for school holiday entertainment and children are assured of a place on day excursions or centre-based programs.

The pre-booking sessions will be held from Monday, December 18 to Wednesday, December 20 from 6pm to 8pm at Kew Primary School (Peel Street entrance).

This year's holiday program provides options for venue-based activities or day excursions, or both. The program runs from Tuesday, January 2 to Friday, February 2 between 8am and 6pm on each week day. Pre-booking is essential so organisers know exactly how many children to allow for.

The day excursion component includes visits to "Dinosaurs Alive" at the Museum of Victoria, environmental activities at Jells Park, Waverley, and a look back at Chinese-Australian history at the Chinese Museum, off Little Bourke Street, coupled with lessons in kite and lantern-making.

There's a visit to the Alpine Toboggan Park at Whittlesea, a day at Yarrbat family sports centre, a trip on "Puffing Billy", and a visit to "Polly Woodside" and the Maritime Museum in South Melbourne.

Old favourites like canoeing with the Victorian Board of Canoe Education, horseriding, bushwalking and roller skating excursions, have been included too.

Venue-based activities include puppet theatre, mime and dance performances, art and craft, indoor/outdoor games and sports, cooking, drama and daily swimming.

Kew's Traffic School in Cotham Road will be open as part of the program, between 10am and 3pm each day. No staff supervision is provided and children will only be accepted if they are accompanied by a parent prepared to stay with them during the whole of their session.

Catering is not provided but families can take a BYO picnic to enjoy in the Gazebo.

There are some bikes available for children unable to take their own. The "Life, Be In It" games trailer will operate at the School daily.

Enquiries about the holiday program should be directed to Kew Council's recreation co-ordinator, Wendy O'Neill, on 860 5218.

LIBRARY HOLIDAY HOURS

**December 23 — 9am to noon.
December 24-26 — Closed.
December 27-29 — 10.30am to 6pm.
December 30 to January 1 — Closed.
January 2 — resume normal hours.**

HERITAGE ADVICE

Kew's heritage advisor, Mr Bryce Raworth, will be in Kew and available for consultation on Tuesday, December 12.

This is Mr Raworth's last visit for 1989. The February edition of Kewriosity will carry information about his visits during February and March 1990.

The heritage advice service, available free to owners of properties in Kew — either residents or business proprietors — is an initiative of the Ministry for Planning and Environment's Heritage Branch, Kew Council, and other participating councils. The service offers advice to owners keen to conserve their properties.

GROUP IDENTIFIES SOCIAL NEEDS

At its October annual general meeting, Kew Community Action Group identified two areas in which they consider social services in Kew have been found wanting.

They are the inadequacy of local family services for Kew families in times of crisis, and the lack of services for socially isolated people in Kew.

A sub-committee of the Group was formed to look at the problems of Kew families in crisis with the possible aim of putting together a register of resources already provided by Kew Council and voluntary organisations in Kew.

A public meeting in April this year looked at the plight of socially isolated people in Kew. As a result, the Outreach committee of East Kew Uniting Church has set up a social group for residents of special accommodation houses in Kew.

Chairperson of the Kew Community Action Group, Ms Rhonda McCaw, said "Our group has remained strong over the years, but now, as a consequence of a review into local groups such as ours, it has been suggested we might start to play a larger role in the community by developing a stronger connection with the Council and possibly by acting in some form of advisory capacity to them".

"It has also been suggested that groups such as ours get involved in holding public forums where local issues can be canvassed", she said.

Kew residents who would like more information about the work of Kew Community Action Group, or who would like to join, can contact Rhonda McCaw on 817 2940.

SUMMER STUDY FOR SENIOR STUDENTS

Methodist Ladies' College hopes year 11 and 12 students in the wider community will join its Senior Student Summer Courses being held during December and January.

The courses are designed to prepare students for studies in Australian politics, economics and legal studies as well as to revise year 11 accounting before proceeding to year 12.

Computer keyboarding and word processing courses, and advanced reading and study skills courses, help equip senior students with the skills they need during VCE studies, tertiary study and a lifelong career.

For more information or for costs and enrolment dates contact the Community Education Unit on 810 1333.

GARDENS PROJECT NEARS COMPLETION

A Kew project, believed to be the State's first, means that families and people with disabilities will soon have increased access to Kew's historic Alexandra Gardens and its facilities.

A major remodelling of the garden's facilities means that wheelchairs and prams can now be drawn-up beside picnic tables in the barbecue area and bench seats throughout the gardens. A redesigned barbecue area means also that disabled people will soon be able to cook from a specially designed and newly installed barbecue.

Tables and benches have been designed at wheelchair height so that by drawing up beside them, people with disabilities can slide from chair to seat without difficulty or, if they prefer, can sit in their chair at tables built at correct height for them.

Access to the gardens via the main archway entrance in Gellibrand Street has been improved by widening the entrance itself, by installing a handrail, and by widening the paths leading into the gardens. At the northern entrance beside Kew Library, paths have been widened and repaired.

Pram and wheelchair crossings now give complete access to the lawn and barbecue areas, benches causing an obstruction to wheelchairs have been relocated, and all pathways through the gardens have been widened.

Joint access to the Band Rotunda is provided via ramps constructed at an appropriate gradient for hand-propelled wheelchairs, other wheelchair types, and prams and pushers.

The idea for improving facilities in the gardens was suggested to Kew Council in September 1987 by Kew Rotary Club. The Club adopted the idea as one of its Australian Bicentenary projects.

Kew Council decided to expand the Club's original idea and to implement the project. Plans for improving access and redesigning facilities were drawn up by the urban design team of the Ministry for Planning and Environment. The team worked in conjunction with the outdoor access for all working party of the Sport and Recreation Department, Kew Recreation Integration Group and Council officers.

Joint funding for the project was provided by Kew Rotary Club, the Department of Sport and Recreation and the Ministry for Planning and Environment.



The Mayor of Kew, Councillor Michael Montalto, receives a cheque for \$8,500 from Kew Rotary Club members Alan Fluck and Viv Stephenson, for the Club's contribution to the Alexandra Gardens Joint Access Project. Photograph: Jan Bottcher

LOCAL RESIDENT CAMPAIGNS AGAINST DRINK DRIVERS

Kew resident, Donald Cameron, first became interested in Victoria's road toll when, in 1965, the Victorian Government decided to change the State's hotel closing hours.

In the preceding 24 years, Mr Cameron has closely followed the pattern of the State's road toll. He says his studies show that without a doubt, the most common factor in all road deaths since 1965, has been alcohol.

Mr Cameron says it is self-evident that a drug such as alcohol impacts on our capabilities as a driver or road user.

He thinks it anomalous that governments all over Australia express concern about the tragic loss of life on our roads, yet they clearly send conflicting messages to their constituents.

"On the one hand we're told 'Don't drink and drive', and on the other we're told you can drink, but stay under .05.

Mr Cameron said Victoria's catastrophic road

toll underlines the fact that alcohol is the direct cause of 42 per cent of deaths on the State's roads this year. This figure does not include those who are permanently maimed or disabled as a result of a drinking driver, he said.

Mr Cameron, Victorian State Director of PADD (People Against Drink Drivers), says his organisation believes there is clearly a case for a State government initiated campaign along the lines of the Quit (smoking) campaign.

At the very least he believes that alcohol packaging should carry a health warning similar to that on cigarette packets, that drinking and driving should have the same social stigma attached to it as smoking has — for example, smoking-in pregnancy — and that the ambiguity should be removed from all government and police publicity about drinking and driving.

He says that ideally, PADD would like to see the 0.5 blood alcohol level reduced to 0 per cent for all drivers, not just for young or "P" plate drivers.

"Clearly, a person's capability to drive is affected from the very first drink of alcohol. We

may be accused of having a utopian ideal, but if our suggestion was taken up and it saved just one life, it would have been worthwhile".

Mr Cameron said that over the years, governments have tried to improve roads, have introduced new licensing methods and new laws, and have tried to educate and inform road users.

But he says any progress the government makes in these areas is nullified by the fact that the major killer in road accidents is alcohol.

Mr Cameron says his organisation is appealing to all road users over Christmas and the holiday period not to drink at all if they intend to drive.

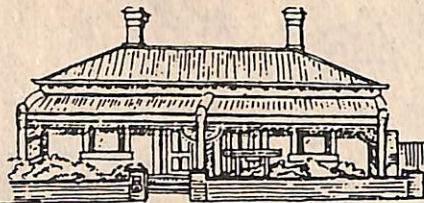
Anyone who has lost a loved one or has had a loved one injured as a result of a drinking driver, is welcome to join People Against Drink Driving. The organisation cares for and helps bereaved people cope with their grief.

PADD also welcomes as members people who are concerned about alcohol-related deaths on our roads.

For more information contact Donald Cameron on 861 9000.

KEW COMMUNITY HOUSE

Co-ordinator: Judy Price



6 DERBY STREET, KEW, VIC. 3101
Telephone: 862 3126

Do you envy people who say "My job is fascinating. I meet all kinds of people?"

Then you might envy me because my job is fascinating, too. Here at Community House a colourful parade of people constantly pass through the doors and I have the privilege of meeting them and having my life enriched by their experiences.

Over the last two years I have noticed that many people who come to our House are going through a life transition of some kind. How many different transitions can you identify with from these snippets of conversation?

"I have a bit more time now that I've retired and I'd be interested in joining the Committee (that runs the House)"

"Thank goodness you have childcare. I need to get out of the house and do some classes to keep me sane!"

"My husband died recently. People are so friendly and I get the companionship I need when I come here."

"I've just arrived in Kew from New Zealand (or anywhere else) and I don't know anyone. What's Community House all about?"

"I've had a psychiatric illness in the past but I'm coping pretty well now. Can I help you with posting out mail or some other chores until I get a job?"

"I'm involved in a program at Kew Cottages which helps people learn to live independent lives in the community. I would like to bring a small group to do some cooking once a week. Your

kitchen is so much more like home than ours."

Identifying with one of these conversations or with something akin to one, means that here at our House we have something for you. It's impossible to get bored here because there is always something going on.

When I look back to when I started as the only paid worker at the House, it is exciting now to work alongside a recreation integration co-ordinator, family day care co-ordinators and caregivers, and to have seen an adult literacy program get underway.

It's a busy little House and I shall miss it once I leave in a few weeks time. I have no doubt, though, that the House will take off in other exciting directions under a new co-ordinator so lucky to have the help of wonderful volunteer tutors and helpers, a supportive management committee, and so many opportunities to work co-operatively with the people who provide such wonderful services for the Council, the Recreation Centre and the hundreds of organisations and institutions in Kew.

I have enjoyed so much working with them all.

Next issue of Kewriosity will give you an idea about 1990 classes at our House. I'll let you in on one secret — if you are a woman contemplating going back to study and feel doubtful about coping with it all, we've organised a 16 session course called "A Second Bite of the Apple", just for you.

Happy Christmas and good luck to you all. Do remember to visit our House, soon.

CLUB FOR THE YOUNG

Kew Rotaract Club is a club for young people, 18 to 30, who are interested in professional development, community service, and social activities.

Recent activities have included a "Dial-a-Santa" project to raise money for research into the Sudden Infant Death Syndrome, an all-weekend inter club car rally, and an indoor cricket match with the Club's sponsoring Rotary Club.

Activities planned for the new year include a wineries bus trip and a weekend trip to Daylesford. Plans are underway for the Club to build a pergola at Kew Community House in Derby Street.

Young people in Kew who are interested in joining Rotaract can contact Judi Brewster on 853 9830, Mike Dickinson on 818 5119 or Liz Steen on 45 1942.

★ ★ ★

Kew Cottages' and St Nicholas Parents' Association would like to apologise to Kew residents who went to Kew Cottages' November Fete hoping to see Humphrey Bear.

Because of a misunderstanding between the Association and Humphrey's agent, Humphrey did not arrive as expected on the day.

NEW MARKETS FOR SUNDAY SHOPPERS

Three new Sunday markets stocking a wide range of Christmas gifts have opened near Kew in recent weeks.

They are Fitzroy's art and craft market, Collingwood's merchandise and art and craft market, and Ivanhoe's art and craft market. All three are modelled on the successful Sunday markets at Camberwell and Hawthorn.

The Fitzroy market features 100 stalls. It is held in the Town Hall in Napier Street, Fitzroy, on the second Sunday of every month between 11am and 4pm. For enquiries contact 419 5366.

The Collingwood Market, with 60 stalls, is held in St. Helier's Street just near Collingwood Children's Farm. It is run jointly by the Children's Farm and Collingwood Rotary Club.

The market is open every Sunday between 8am and 2pm and admission costs 20 cents per person (children free). For enquiries ring 418 0651.

Ivanhoe market is held on the third Sunday of every month in Harry Heath's Arcade, Burgundy Street, Heidelberg, between 12 and 4pm. For enquiries ring Mrs. Kristens on 497 3518.

Kew residents wishing to hire a stall in the markets should contact the telephone numbers listed for availability and hire fees.

TIPS INCREASE CHARGES

Kew residents using Heidelberg and Northcote tipping facilities will have to pay an increase in fees on their next visit.

In September both Heidelberg and Northcote Councils voted to increase their tipping charges from October 1.

Under an arrangement with Heidelberg Council, Kew residents can dump one cubic metre (a one axle trailer load) of household refuse free of charge, providing they present one of the four free tipping vouchers issued to households by Kew Council each year.

If a voucher is not presented tipping fees apply. One car boot load costs \$4; utilities, station wagons or small trailer loads \$8; and larger loads cost \$8 per cubic metre.

Heidelberg Transfer Station in Waterdale Road is operated by Heidelberg Council. It is open from 8am to 12 noon every day except Christmas Day, New Year's Day, Good Friday and Anzac Day.

On Sundays between November 1 and April 30, the Transfer Station will be open between 7am and 12 noon except for the public holidays just listed.

Heidelberg Transfer Station accepts all refuse other than builders' rubbish, excavated material, liquid waste or dangerous or offensive material. For enquiries telephone 490 4222.

Kew Council does not have a free voucher arrangement with Northcote Council. But Kew residents can use Northcote Tip to deposit small quantities of builders' rubble, tree clippings, garden wastes and some appliances. The tip will not accept liquid waste or dangerous or offensive substances.

The cost of dumping one car boot load of rubbish is \$3; one standard size trailer load, \$7; a tandem trailer load \$10; and large loads are \$10 per cubic metre.

Northcote Tip is on the corner of Clifton and Wales Streets, Northcote. It is open from 7.45am to 3.15pm Monday to Saturday except Christmas Day, New Year's Day and Good Friday.

Enquiries may be made by telephoning 481 9481.

Residents with small quantities of household chemicals or other poisonous substances to dispose of should contact the Board of Works on 620 0221. The Board conducts regular chemical collection days throughout the Metropolitan area during the year.



DID YOU KNOW?

That since Kew Recreation Centre opened nine months ago, almost 11,000 people use the Centre's facilities each week?

That's 107 people who visit the Centre every hour it is open.

And did you know that 140 diverse recreational classes catering for all age groups and all levels of fitness and ability are being offered at the Centre?

For enquiries about programs, costs, membership, facilities and opening times, contact the Kew Recreation Centre on 861 6177.

MP'S VISIT LOCAL HOSPICE

The idea of using a hospice for terminally ill patients was winning increasing acceptance in the community, said Sister Joy Ginn, sister administrator of Caritas Christi Hospice in Studley Park Road, Kew.

Sister Joy was speaking on the occasion of a visit by State parliamentarians Mrs Marie Tehan, shadow minister for Health, and Mrs Jan Wade, MLA for Kew. Mrs Tehan and Mrs Wade visited the hospice to study the specialised services provided there.

Caritas Christi has cared for 500 terminally ill patients this year. The hospice has 60 palliative care beds and 36 for rehabilitation and convalescence. Occupancy has been at a rate of 87 per cent this year. The hospice has 104 nurses.

Sister Joy said that it is quite acceptable to refer a patient at a relatively early stage of a terminal illness.

"Relatives should not feel any sense of failure when a person is admitted to our hospice. We are specialists in caring for people with illnesses such as cancer and our nurses like to have time to develop a personal relationship with the patient", she said.

Patients are usually referred to the hospice by social workers, hospitals or general practitioners, but inquiries direct from families are welcome.

Caritas Christi also provides a rehabilitation and convalescence service for about 250 patients a year. The average stay is five to six weeks.

With Christmas approaching the hospice expects inquiries for respite care to provide relief for families who spend long hours caring for relations who are seriously ill.

Some patients are admitted for a weekend only — for example, to enable relatives to attend a wedding — while others stay longer. The maximum stay for respite care is generally three weeks.

Caritas Christi also operates a day care centre for patients within a four kilometre radius. About 70 people attend on a regular basis as there are facilities for about 25 a day. The Hospice's bus can collect 12 people each day and another 13 come by taxi or with relatives. The centre is open from Tuesdays to Fridays. On Thursdays activities are dedicated to Italian-speaking people.

Caritas Christi is one of three hospitals conducted by the Sisters of Charity in Victoria. The other two are St Vincents public hospital and St Vincents Private Hospital. Caritas Christi is a public hospital subsidised by the Health Department of Victoria.



Mr Marshall Slattery, 77, gets a ride to Caritas Christi day care centre. He is wheeled by Sister Elizabeth Wall while Mrs Jan Wade, Member for Kew in the State Parliament, looks on. Photo: courtesy Caritas Christi.

OCCASIONAL CHILD CARE

Kew Occasional Care Centre at 21 Strathalbyn Street closes on Thursday December 21 at 4.30pm and will not re-open until Monday, February 5, at 8.30am.

It will however be open for phone bookings only, on Friday, February 2 between 8.30am and 4.30pm.

Parents wanting to use the Centre may book up to two weeks in advance.

The Occasional Care Centre provides short-term care on an occasional basis, but can be used on a four hour maximum daily basis up to three times per week.

The Centre caters for up to 25 children at the one time and is registered to take 10 pre-schoolers from birth to three years and 15 from three to six years.

For more information contact the co-ordinator, Dale Black on 859 6459.

COTHAM VILLAGE CELEBRATIONS

Traders at Cotham Village shopping centre on Cotham and Glenferrie Roads, have joined together to organise some activities for local shoppers in the lead-up to Christmas.

Children up to 12 years can enter a colouring competition and have the pleasure of seeing their work displayed in local shops.

The competition, which starts on December 4, is divided into two sections: section 1 for children from four to six years, and section 2 for children from seven to 12 years.

College Ward councillors will judge the winning entries and prizes will be presented by Father Christmas on Thursday, December 22, at 2.30pm in the Village Centre. Sacred Heart primary schoolers will entertain shoppers with Christmas Carols.

Father Christmas will also draw the winning entry in the Cotham Village Christmas hamper. Tickets for the hamper will be given to shoppers making purchases in Cotham Village between December 4 and December 22.

The contents of the hamper have been donated by local traders in their efforts to engender some Christmas spirit within their local community.

HOLE IN ONE

Kew Festival Committee is planning a Hole in One golf competition as part of next year's Festival activities.

The Committee is looking for a Kew not-for-profit group to organise and run the event as a fundraising venture.

Any local group prepared to take on the event would keep net profits for themselves or could if they wished, share the profits with another local not-for-profit group. More than one group could also share the organising running and profits of the event if they wished.

Any interested group or groups should contact Kew Council's recreation co-ordinator, Wendy O'Neill, on 860 5218.

BOROONDARA BUSHWALKERS

Despite the festive season and all that it entails, Boroondara Bushwalkers will continue to meet during the holiday period.

The Club's next meeting is on December 20 at 8pm in the meeting room at Burnley Plant Institute off Swan Street (note change of venue). Members and potential new members can reach the institute via The Boulevard running between Swan Street and the Grange Road bridge. A sign will direct the way.

The meeting features videos and the announcement of winners in the club's photographic competition, as well as photos on display.

The Club's meeting on January 17 at 6.30pm features an informal barbecue in Alexandra Gardens and is an ideal opportunity for potential new members to go along, find out what the Club is all about, and meet new friends.

Day walkers enjoyed walking the route of the old Outer Circle railway from Fairfield to Oakleigh earlier this month. Several longer trips planned for early 1990 include trips to Victoria's beautiful mountain country — Jamieson, north of Licola, Mount Hotham and Falls Creek. Tasmania's Cradle Mountain is the likely venue for a walk planned for the Australia Day long weekend.

For more information about Boroondara Bushwalkers and their activities contact Jim McLaughlin, 859 5876 (after hours) or Thelma McManis, 817 5548.



HALL AND EQUIPMENT HIRE

Fourth Kew Scout hall in Glass Street, East Kew, has recently been refurbished and is available for community groups and individuals to hire.

The hall is suitable for meetings, discussions, displays and small family functions such as birthdays, engagements etc. Hirers must apply and pay for their own liquor licence.

The Scouts also hire camping equipment, tables and chairs, to individuals or community groups.

For more information contact the property officer, Mr. Rice on 819 7299 during business hours.

GIRL GUIDES SEEK LEADERS

Girl Guides in the Kew District are anxious to recruit leaders for their established units.

District Commissioner, Mrs Elaine Stradwick, said "We are desperate for new leaders to come and help Guides in the eight to 14 year age group, learn new skills and have fun!"

"We are looking for women over 17 years to join us and we want to stress that no previous experience is necessary to become a Guide Leader."

If you would like to join the world-wide association of Girl Guides or would like more information, contact Mrs Stradwick on 817 4810.



FOR DADS AND THEIR CHILDREN

There are many reasons why fathers often miss out on opportunities for activities with their children.

But two new programs at Kew Recreation Centre aimed at providing organised fun and growth for fathers and sons, or fathers and daughters, could put an end to all that.

The programs are the YMCA's father-son Explorer groups and father-daughter Adventurer groups. Each group consists of six to eight father-son or father-daughter combinations.

Explorer groups for fathers and sons are based on the lore of early Australian explorers and each group is named after a famous explorer.

Adventure groups for fathers and daughters are named using Aboriginal words such as Birra-Li — young girl, and Tirriki — joy and laughter.

Each group has regular fortnightly meetings in members' homes. These include the children reporting on interesting activities held during a previous period, a story, a song, a game, and a project or craft. The idea is to give the child confidence and help development through enjoyable activities with his or her Dad.

Each group organises special events throughout the year. These could include a weekend camp every few months, barbecues, bikeriding or fishing trips. In these activities all the groups meet together.

Groups develop their own identities and it is up to group participants to decide how they organise themselves. They might, for example, have their meetings in local parks during the summer months and their activities can vary as much as they wish.

New fathers who are interested in the Explorer or Adventurer programs can obtain more information from Chris Baker on 818 2430 (after hours) or Peter Burns on 861 6177 (business hours).

NEW PROBUS CLUB

A long waiting list for membership of the Kew Ladies' Probud/Club prompted Kew East Rotary Club to sponsor the formation of a new ladies' Probud club.

Formed in November, the East Kew Ladies' Probud Club has 68 formation members and there are spaces for more women to join.

The Club meets on the first Wednesday of every month from 10am to noon for informal discussions, visits by guest speakers or outings to a variety of interesting organisations.

From February onwards the Club will meet in Kew Library Complex hall, off Cotham Road. January meeting details can be obtained from the Club secretary.

New members need to be sponsored by an existing member. For more information contact Club secretary, Mrs Janet Evans, on 817 5355.

FUNNY MONEY FOR THE YOUNG

The costs of transport, recreation and leisure activities are limiting factors for young people trying to enjoy their school holidays.

To help offset this problem the Cities of Kew, Camberwell and Hawthorn, now co-sponsoring a youth holiday program for the three municipalities, have introduced voucher packages giving discounts on leisure and recreational activities to the young.

The voucher packages, nicknamed "funny money", cost \$10 and are available to young people 11 years and over. By presenting a voucher at any of the participating outlets, young people can obtain access to a wider range of leisure and recreational pursuits at a discounted cost.

Organisations which have so far joined the scheme, include ice and roller skating rinks, boating hirers, shops stocking books, records and hobby items, golf courses, tennis clubs, Kew Recreation Centre, Luna Park and The Zoo.

The voucher packages are also linked to a one week camping program and an activities program involving selected day trips plus activities based at Council-sponsored young people's resource centres.

The camp, at Fraser National Park near Eildon, is open to 14-16 year olds. Activities include camping, windsurfing, canoeing, bushwalking, fishing and other water pursuits.

Day trips and activities for young people 11 years and over include horseriding, motor-bike riding, trips to the beach, windsurfing, barbecues and picnics.

The voucher packages also include pamphlets and brochures on free activities plus information on health, careers and budgeting.

Kew's youth services development officer, Maureen McLaughlin, said "The idea behind the voucher package program was to create opportunities for young people to plan their own holiday activities and to budget for them. We want to encourage them to think more carefully about some of the things they might want to do and to get the best value from the voucher system".

Young people or their parents can obtain more information about "funny money" and the young people's holiday program by contacting Maureen McLaughlin on 860 5223, 861 6828 or 860 5260.

DEADLINE

Copy for the February 1990 edition should reach the temporary Municipal Offices in the Kew Library Complex hall by Monday, January 8.

Contributors away on holiday at that time are advised to forward their contributions prior to December 22, 1989. For enquiries on deadlines/contributions contact the Information Officer, Olwyn Eaton, on 862 2466.