

KEWRIOSITY

City of Kew, Municipal Offices,
Charles St., Kew. 3101. Telephone 862 2466

NOVEMBER 1989



PAPER COLLECTIONS

Victoria's paper recyclers are buckling under the weight of increased environmental awareness.

They simply can't recycle quickly enough the thousands of tonnes of paper delivered each week for recycling.

The news has put on hold Kew Council's hopes of introducing a weekly paper collection service to residents. The Council has approached its paper collectors, The Salvation Army, to discuss the possibility of changing its monthly paper collection to weekly.

Initially this arrangement seemed possible but subsequently The Salvation Army were told by Victoria's largest paper recycler, A.P.M., that the company has a greater supply of used paper than it requires.

It seems that demand for recycled paper products just hasn't kept up with the supply of the used product and until it does, Kew Council has put its plans on hold.

COMMUNITY ASSISTANCE GRANTS

Kew Council is inviting local self-help groups to apply for Community Assistance Grants for the 1989/90 year.

The grants are made available by the Council to support and encourage community initiated self-help organisations. A pre-requisite for application is that these groups will be providing a service to residents only within the City of Kew, and are groups which are not eligible for funding or program responsibility by other spheres of government.

Application forms and policy details are available from Kew Council's Community Services Department on 860 5223. Applications should be forwarded to reach the Acting Chief Executive, City of Kew, Municipal Offices, Charles Street, Kew 3101 by November 17, 1989.

It was party time for these children from Kew-Hawthorn, Box Hill and Camberwell Family Day Schemes, when they met for a Teddy Bears' Picnic at Beckett Park, Box Hill, last month.

STOP PRESS

Kew Council's Community Services Department has moved downstairs to the lower ground floor of the Municipal Offices in Charles Street.

Entry is by the rear door adjacent to the car park. There is wheelchair and pram and pusher access via a ramp.

The Council's new Planning and Development Department which combines building, town planning, health, by-laws and traffic, has moved to the ground floor area of the Municipal Offices formerly occupied by the building and community services departments.

For more details of temporary offices relocation see page three.

Dates for November

In this column it is not possible to list the date of every meeting and function held in Kew. Readers are advised to check the short feature articles throughout the newsletter which provide such details, or the notices column on page four.

6

Monday. Kew/Balwyn branch of the Country Women's Association of Victoria, annual general meeting at 12.30pm in East Kew Uniting Church Hall, 142 Normanby Road. New members welcome. Enquiries: Shirley Robinson, 819 1686.

8

Wednesday. Kew Historical Society's final meeting for the year, on November 8 at 8pm, in Kew Library Complex hall, off Cotham Road. Guest speaker: Mr Natoli who will speak about his life in Kew. Visitors and new members welcome. Enquiries: Sue Leong, 817 4660.

Wednesday. Kew Ladies Proboscis Club meets at Kew RSL Hall, 63 Cotham Road, at 10am. Members note: Guest speaker is Mrs Bettina Wells who will speak on Tourism in Victoria.

9

and 23. Kew Branch of the Save the Children Fund meets at Kew Library Complex hall, off Cotham Road, from 9.30am to 11.45 am. New members welcome.

14

Tuesday. Evening immunisation and adult rubella sessions at Kew Library Complex hall, off Cotham Road, between 6.30 and 7.30pm. Note: measles/mumps, rubella given only between 6.30pm and 7.00pm. Enquiries: 860 5245.

15

Wednesday. Kew Arthritis Self-Help Group meets at Kew Library Complex hall, off Cotham Road, at 10.30am. A short meeting will be followed by a "break-up" party. For enquiries contact Mrs Turner, 862 2021.

Wednesday. Children's immunisation session at East Kew Maternal and Child Health Centre, 21 Strathalbyn Street from 9am to 10.30am. Note: measles/mumps/rubella given only between 9am and 10am. Enquiries: 859 1380.

Wednesday. Boroondara Bushwalkers meet at Kew Library Complex hall, off Cotham Road, at 8pm. Guest speaker. New members welcome. Enquiries: Thelma McManis, 817 5548.

16

Thursday. Kew Legacy Widows' meeting at Kew RSL Hall, 63 Cotham Road, Kew, at 11am. All Legacy widows welcome. Enquiries: 817 5097 or 859 2097.

20

Monday. Kew Auxiliary, Royal Victorian Eye and Ear Hospital meets at Kew Library Complex hall, off Cotham Road, at 1.30pm. New members welcome. Enquiries: 817 4671.

22

Wednesday. Community Walk by the Yarra to visit Fairfield Boathouse. Leaves Kew Community House, 6-8 Derby Street, promptly at 1pm. Cost: \$1. Enquiries: 862 3126.

23

Kew auxiliary, Royal women's Hospital, meets at Kew Library Complex hall, off Cotham Road, from 1.30pm to 3.30pm. New members welcome. Afternoon tea served. Enquiries: Mrs Dietrich, 861 6059.

27

Monday. Kew Daytime Garden Club meets at Kew Library Complex hall, off Cotham Road, at 1.30pm. Social afternoon with guest speaker: Mrs J. Hopper. Subject: Wrapping Gifts for Christmas. Enquiries: 859 2977.

CHRISTMAS CARDS

Residents at Kew Cottages have hand designed, hand printed and hand made Christmas cards to help raise funds for Kew Cottages and St. Nicholas Parents' Association.

The cards are featured in a brochure which illustrates Christmas cards and wrapping paper, calendars, birthday cards, notelets, tea towels and other gifts, for sale by the Association.

Proceeds of the sales go to Kew Cottages and St. Nicholas Parents' Association to improve the quality of life for Kew Cottage residents.

A spokesperson for Kew Cottages said the Association buys small domestic appliances and other home equipment to help Cottage residents. Quite recently the Association bought a new bus to take residents on outings and to special activities.

Kew residents who would like a copy of the Christmas card brochure should contact Mrs. Mary Dyson on 808 1633.

* * *

AND MORE CHRISTMAS CARDS

The Kew auxiliaries of St. George's Hospital and the Royal Victorian Eye and Ear Hospital, have Christmas cards on sale from November 8 to December 15.

The cards will be sold from a stall in the foyer of Ed Credit at 222 High Street, Kew. The stall is open from Tuesday to Friday from 10a.m. to 4p.m. during the November 8 to December 15 sales period. It will close each Monday.

Sales of the Christmas cards benefit St. George's Hospital, Kew and the Royal Victorian Eye and Ear Hospital, East Melbourne.

For more information or enquiries contact Mrs. Elaine Reed on 817 4671.

* * *

HISTORY TAPESTRY NEARS COMPLETION

A project begun in August last year as a permanent reminder of Kew's involvement in Australia's Bicentenary, is nearing completion.

The project, Kew Bicentennial Tapestry, is an eight panel representation of the history of Kew from White settlement to Australia's Bicentenary.

So far six of the eight panels have been completed. Two are framed and on display in Kew Library while the other four are being framed ready for display at the end of this month.

The two remaining panels are being stitched now and organisers hope they will be ready for display by the end of the year.

Kew residents who still want to contribute their stitches to the working of the tapestry can do so at Kew Library on Tuesdays between 6.00 and 8.30 p.m. or on Thursdays between 2.00 and 4.00 p.m.

So far more than 1,200 people — men, women and children — have contributed their stitches to the six completed panels. Their names and addresses have been recorded by the Kew Historical Society and will go into the Society's archives once the stitching is complete.

No experience is needed to work the tapestry: a volunteer is on hand to show how it's done.

Enquiries regarding the tapestry should be directed to Mrs. Dorothy Benyei on 861 8758.

RESIDENTIAL POLICIES REVIEW

Kew Council has adopted May 1990 for completion of its review of residential policies.

The review, being conducted by Council's strategic planners, will initially look at existing planning policies, existing land use in residential areas, and changes in Kew's population.

It will also examine the concept of a residential buffer zone around commercial areas, will look at zone controls written into the metropolitan regional planning scheme, and will review town planning applications and their outcomes.

By February the Council's planners expect to be able to develop alternative planning possibilities and revise Kew's planning and zoning policies.

During March and April the community will be invited to comment on the planner's suggestions before a final report with recommendations is put to Council to meet its May target.

COTHAM/GLENFERRIE TRAFFIC PLANS

Kew Councillors are to meet with the Roads Corporation, local traders and local groups to discuss the Corporation's plans for further remodelling of the Cotham/Glenferrie Roads intersection.

The Corporation plans to remodel traffic signals at the intersection and to incorporate a safety zone on the western side of Glenferrie Road.

Kew Council has circulated plans of the proposal to Sacred Heart Primary School, the Cotham Village Traders' Association and affected owners.

Further inquiries may be made by contacting Kew Council's Engineering Department on 860 5234.

* * *

Commentary

In the last few weeks you will have heard and seen in the media that Councils across the State have been planning their level of services, preparing their annual budgets and setting their annual rate. You will also have read in last month's Kewriosity that here at Kew we are no exception and that for the last three months Councillors and Council officers have been confronted with some very difficult forward planning decisions.

For some, the increase in this year's rate of 13.9 per cent will be seen as a large increase. But it must be viewed in the context I intend to set out below, if Council is to set a clear direction for the level of services that Kew residents have come to expect of the Council, and constantly demand of us.

A dilemma for all councils is that many of the services we provide go unrecognised until someone needs access to one or more of those important services. In almost all cases, the local council is the first port of call for individuals or community groups in need of help. A glance through the community directory recently delivered to homes is all that is needed to see the extent of the services provided by Council on behalf of the Kew community.

In recent years we have found ourselves adjusting our rates to provide or maintain a service which has traditionally been or is properly the responsibility of the State or Federal Government. And we are continually finding that State and Federal Governments, themselves faced with the problem of what services to cut and where to spend their dollars, have axed grants to local councils and community groups and institutions, or have substantially reduced the funds they provide.

It is in this climate of funding cutbacks and the imposition of higher statutory costs by the State to local government that we have had to do our planning for next year.

For us, the option to cutback on services was out of the question. Time and again we reviewed our programs and always we came back to the view that our current services must be maintained and some of the works which had to be deferred

or put aside over the last few years could not be deferred or put aside any longer.

This year our WorkCare and superannuation premiums have increased by three per cent and our waste disposal costs by just over one per cent. Financial assistance from the Commonwealth Government has dropped for the next financial year by almost \$100,000 which means a rate increase of about one per cent just to cover the loss. These three items are items over which Council has no control and, together, they have added a five per cent increase to the rate requirement.

When these items are combined with basic operating costs, which this year have increased 7.7 per cent in line with the annual inflation rate, the rate requirement increases to just under 13 per cent. And as yet I have not mentioned the need to maintain our programs of road resurfacing and footpath upgrading; the need to allocate funds to attend to drainage problems in Kew's south and south-eastern sectors where problems were experienced by residents during the unseasonal storms of November and December last year; and the need to provide for continued streetscaping and traffic management works in specified areas of the City.

Funds also had to be set aside to remove asbestos from the ceilings in the Municipal Offices, a process which will take place during December and January, and we had to provide for the development of planning strategies in both commercial and residential areas. This work is essential if future developments are to be compatible with the wishes of the community.

In all, this amounts to the overall rate increase of 13.9 per cent struck at our meeting on October 31.

We are well aware that this increase will place more financial strain on household budgets already stressed by burgeoning increases in other areas, but the ditching of vital community and social services or severe cutback in these areas was simply not a consideration we felt Kew residents would be prepared to live with for the next year.



Cr. Michael Montalto, Mayor of Kew.

MEETING DATES

November 14 General Purposes Committee
7.30pm

November 21 Council 8.15pm

November 28 Standing Committees 7.30pm

Meetings are held in the Committee Rooms and Council Chamber at the Municipal Offices, off Cotham Road, and all are open to the public.

Copies of agendas are available for consultation at Kew Library prior to each meeting.

CAMBERWELL JOINS HOLIDAY PROGRAM

The Teenage Holiday Program operated jointly by Kew and Hawthorn Councils over the past five years has been extended to include young people from the City of Camberwell.

Camberwell Council approached Kew and Hawthorn with the idea of a tripartite program because many of its young people were already participating in the Kew/Hawthorn programs and because a joint approach offered greater benefits to young people from all three municipalities.

The tripartite holiday program means an increase in access to equipment and personnel resources, an expansion of the range of holiday options available to young people, and a reduction in the costs of providing programs by spreading the costs among the three Councils.

All three Councils will contribute equally to the cost of running the programs, will share State government grants, sponsorship and revenue from the programs, and will divide the workload involved in running the programs equally among their three youth services departments.

Maureen McLaughlin, Youth Services Development Officer for Kew Council, said "The joint approach makes complete sense because young people don't operate according to municipal boundaries. They get together as a group of friends in the areas that suit them best. By extending the program to include Camberwell, we're formally acknowledging the participation of Camberwell young people in our programs and we're now able to offer a much wider range of options to young people and their families in the three municipalities".

Ms McLaughlin said the extension of the program would be reviewed in 12 months to ensure its continuing success.

MUNICIPAL OFFICES TEMPORARILY RELOCATE

Kew Council has announced that asbestos removal at the Municipal offices during December and January means its services will have to relocate.

The removal of the asbestos is due to start on December 18 and will continue through to the end of January next year. During this period it will not be possible to conduct normal services from the Charles Street Offices.

A temporary office will be established in Kew Library complex hall at the rear of the Library. All services to the community will be conducted from there.

To meet routine requirements during the relocation only a minimum of furniture, equipment and files will be moved.

Acting Chief Executive, Mr. Ian Poulter, said "We will do our best to provide a quality service to residents during the asbestos removal but we are relying on our residents understanding to appreciate that it will not be possible during these weeks, to respond to all requests or enquiries as would normally be the case."

Advertisements giving full details of the office relocation will be given in the December Kewriosity and will feature in the local press.

OSTEOPOROSIS APPARATUS INSTALLED AT ST. GEORGE'S

Apparatus for the diagnosis and monitoring of osteoporosis has been installed at St. George's Hospital, Kew, by The Melbourne Diagnostic Group.

Osteoporosis is a condition in which the amount and strength of bone is weakened. It affects women after menopause and is more common than coronary heart disease and diabetes in post-menopausal women.

The Executive Director of St. George's, Mr. Malcolm Kinloch, said "Bone loss from osteoporosis can be quite debilitating and can place those affected at greater risk to fractures, particularly of the hip and spine."

Mr. Kinloch said the apparatus installed at the hospital is widely regarded as being the State of the Art in its accuracy. Only the second of its type to be installed in Victoria, it uses an extremely low dose of X-radiation together with a computerised detection system to record bone density.

Patients needing an examination for osteoporosis will have to be referred by their doctor or specialist or can contact St. George's Hospital women's health clinic on 817 2462

NOTICES

Child Support Session

If you are a sole parent, the new Child Support Scheme could affect you and your children.

To help you find out how the scheme affects you, how maintenance is calculated, when to go to Court and how to reach your own agreement, the Marriage Guidance Council of Victoria at 46 Princess Street, Kew, is running an information session.

The session is on Thursday, November 16 from 10am to 12 noon. Admission is free. Presenter is Patricia Hamilton of the Council's Family Mediation Service.

Ring Trish Adams on 861 5354 to book your place.

★ ★ ★

Babysitting

Kew Co-op Babysitting Club would like to recruit new members. Parents joining the club provide home-based care on a reciprocal basis at no financial cost to members.

Contact Debbie Love on 817 6006 or Jenny James on 862 1462 for details.

★ ★ ★

Laminating Day

Highbury Grove Playgroup is holding its annual Laminating Day on Saturday, November 11, from 10am to 4pm at Kew Community House, 6-8 Derby Street, Kew.

Laminating — the technique of coating paper products with plastic — preserves precious mementoes from dust, discolouration and fading. The technique is suitable for preserving cards, posters, children's drawings, letters and documents like school certificates, college degrees and business papers.

Prices vary depending on the size of the item, but are far less than the average retail cost for the process.

Funds raised go towards providing programs and equipment for the playgroup.

For more details contact Marlene King on 861 9880.

★ ★ ★

Headway Fete

Headway, an organisation which provides support and counselling for head injured people and their families, is having its annual fete on Saturday, November 11 from 9am to 3pm.

Headway is at 763 High Street, East Kew. Features of the Fete are handcrafts, homemade cakes and cookies, jams, plants, books, clothes, lucky dips and light lunches.

Everyone welcome. Donations of goods appreciated. For more information contact Bob Kalwig on 836 2267.

★ ★ ★

Sausage Sizzle

The Friends of Bodalla are holding a Sausage Sizzle at Bodalla Hospital, 32 Walpole Street, Kew, from 12 noon on Wednesday, November 15.

Tickets are \$6 which includes sausages, salads and desserts. The day includes a trading table and many of the articles for sale have been made by the residents at Bodalla.

For enquiries ring 25 6298, 859 8016 or 862 1355.

★ ★ ★

Kew Cottages Fete

Kew Cottages annual fete is being held at Kew Cottages, Princess Street, on November 11 between 10am and 4pm. Features Zig and Zag, Humphrey Bear, pony rides, Merry-go-round. Cakes, sweets, ice-creams, drinks, light lunches, morning teas, afternoon teas, groceries, Christmas cards. Ring 860 1233 for more details.

★ ★ ★

Book Sale

Friends of Kew Library Book mini sale, the last for 1989, will be held on Sunday, November 19 from 2pm to 5pm in the foyer of Kew Library, off Cotham Road. Great bargains for Christmas.

Donations of books can be left at the Library's circulation desk during opening hours. For further information contact Eric Flynn on 859 5653.

★ ★ ★

Planning for Retirement

Kew Planning for Retirement Group is holding its annual general meeting and end-of-year social evening on Thursday, November 23, at 8pm.

Anyone interested in joining the group is warmly welcomed. Monthly small groups cater for a wide range of activities and interests. Marie Evans can help with more information on 817 1814.

★ ★ ★

Recital

Kew Philharmonic Society will present its final program for the year on Tuesday November 28 at 8 pm.

The orchestral program includes Beethoven's *Emmont* overture, Mozart's *Eine Kleine Nachtmusik* and a wind ensemble by Chagrin.

The choir will sing a selection of 17th Century part songs, Christmas music and some Gilbert and Sullivan.

Tickets at \$6 and \$4 include supper after the concert.

For bookings or enquiries contact Valda Fouvy on 817 1881 or Lola Stokes on 817 3186.

★ ★ ★

Prize-Winning Play

William Inge's Pulitzer prize-winning play, *The Dark at the Top of the Stairs* is the next production of local amateur company, The Hartwell Players.

The play traces the joys and agonies of growing up in the 1920's in an American mid-west town and celebrates the positive values of marriage and family life.

The Dark at the Top of the Stairs will be staged in Trinity Presbyterian Church hall, corner Riversdale Road and Waterloo Street, Camberwell. Performances are on November 30 and December 1, 2, 7, 8, and 9 and start at 8.15pm. Tickets are \$8 and \$5.

A Gala Night to meet the cast and have supper after the show is being held on December 2. Tickets are \$12 and \$9.

For bookings contact Mrs Kinsey on 889 2446.

★ ★ ★

Garden Club

Kew Garden Club will hold its next meeting on Thursday November 9 at Kew Senior Citizens Centre corner High and Childers Street.

Guest Speaker: Mr Cartwright on Pelargoniums.

All welcome. Supper served. Enquiries Mrs Morgan on 861 7057.

EARLY PARENTING

Canterbury Family Centre and Community Services Victoria have joined forces to provide a parenting outreach program for local families.

Called the Early Parenting Outreach Program, the program is designed to help families with parenting crises that cannot be managed by universal services such as those provided by local Maternal and Child Health Centres.

Melissa Kubale, a maternal and child health nurse with the new service, said "The program recognises that the task of caring for and adjusting to a new infant often creates crises for many families. Particularly in the first 12 months when it is crucial for parents and child to develop a close and loving bond"

Ms Kubale said the early parenting outreach program provides a home-based, intensive intervention service for families with infants from 0-12 months of age. Families join the program for up to four weeks and are referred to local community agencies at the end of that time if ongoing support is necessary.

The program provides practical mothercraft support in the home, initially for up to six hours per day. This support reduces as the family develops its skills. Flexibility allows working with a family in the evening, if necessary, Ms Kubale said.

Families likely to need the service are those where there are individual adjustment problems or interactional problems between family members. These could be temporary or chronic. Others may be isolated from their extended families or have a lack of family and community support. Some may have inadequate housing, a low income or the lack of parenting skills.

Ms Kubale said most families would be referred to the program by general practitioners, maternal and child health nurses, community agencies or social workers. But self referral by parents concerned about their problems would also be acted on.

Ms Kubale said referrals may be made from November 13 onwards by contacting the Canterbury Family Centre on 882 8336.

The Early Outreach Program will be funded as a pilot project until the end of 1990. It covers families in Preston, Northcote, Heidelberg, Doncaster-Templestowe, Kew, Hawthorn, Camberwell, Mount Waverley, Box Hill, Nunawading and Richmond.

★ ★ ★

ROADWORKS FOR KEW

Victoria's Roads Corporation has allocated almost \$500,000 to fund major roadworks in Kew over the next financial year.

The funds allocation means that Kew Council can continue its major effort to upgrade Cotham Road by including the completion of roadworks between Normanby Road and Bradford Avenue.

When these works are finished, work will start on the Florence Avenue to Normanby Road section of Cotham Road.

The funds allocation means that roadworks in Belford Road can be continued and sections of Studley Park Road can be resurfaced. Work on Studley Park Road will start in January or February next year.

Funds were not provided in the allocation for the reconstruction of Barkers Road from High Street to the cutting. Kew Council understands that proposed Metropolitan Transit Authority track works at Kew Depot in Barkers Road are unlikely to be carried out in this financial year. The track works would have to be finished before roadworks could begin.

WHERE ARE YOU CLARK KENT?

You may not be Superman or Superwoman, but if you bear even the slightest resemblance to Clark Kent or Lois Lane, Interchange wants to hear from you.

Interchange Inner East is a home-based program where volunteer hosts or host families take a child with disabilities for one weekend per month.

Jane Stickels, co-ordinator of the scheme, said "Being a host is not difficult. We provide orientation and support to help our hosts in their new role. All we ask is that they commit themselves to caring regularly for a child, and we do the rest."

Ms Stickels said Interchange carefully matches volunteer hosts with a child with a disability. Hosts are often couples with young children, grown-up families, grandparents, single parents, people living alone, or couples without children.

By breaking the demands placed on them by a child with a disability, parents can look forward to enjoying activities not otherwise possible or can use the time just to relax and unwind, she said.

The child has the opportunity to make new friends in a secure, caring environment and can enjoy the stimulation of new activities and making new friends. And the host benefits through personal growth. "The knowledge that you have cared for a child with a disability and have developed an understanding of his or her needs, is an immensely satisfying and rewarding feeling," Ms Stickels said.

Kew residents who would like some more information about the program should contact Jane Stickels or Jacinta Bleaser on 836 9811.

BUSHWALKERS CLEAN UP

While the Board of Works clean up of the Yarra on October 15 attracted attention from the daily media, one local group's clean up efforts the previous month went largely unheralded.

On September 23 twenty-five eager Boroondara Bushwalkers, their families and friends, spent six hours conducting their annual clean up of Studley Park. From the area above the Boatshed carpark and from the steep Yarra bank below the loop road, the Bushwalkers collected almost 15 cubic metres of rubbish.

Darcy Duggan, planner with Yarra Bend Park Trust, said "We really appreciate the efforts of the Boroondara Bushwalkers. Their annual clean ups are part of the Trust's ongoing land management program. It is community involvement at this level which helps us make the Park an attractive place for everyone to visit. We only wish the people who leave the rubbish in the first place would place it in the bins we provide."

Kew residents who would like to join Boroondara Bushwalkers in their activities are invited to the Club's next monthly meeting on November 15 at 8pm at Kew Library complex hall, off Cotham Road. Guest speaker is Doctor Huon O'Sullivan whose topic is Macquarie Island.

For further information contact Jim McLaughlin on 859 5876 of Thelma McManis on 817 5548.

Boroondara Bushwalkers Bill Mack, Paul Shelton and Richard Dargaville (l to r), with rubbish they collected in Studley Park.



HOSPITAL SIGNS FIRST HEALTH AGREEMENT

St. George's Hospital, Kew, last month signed its first health service agreement contract with the Victorian Health Department.

The Hospital's executive director, Mr Malcolm Kinloch, said the signing of the agreement was an historic occasion. "It is the first agreement entered into with the Government that establishes clear guidelines for the long, medium and short term goals of the Hospital," he said.

The contract means that St. George's will continue to provide quality care for its elderly, midwifery, neo-natal and paediatric patients.

Mr Kinloch said St. George's had canvassed local residents, community groups, patients, medical practitioners, staff, other health service providers and the Government, to determine future patient demands.

Watched by the Executive Director of St. George's Hospital, Mr Malcolm Kinloch, the Hospital's president Mr Neil Hewitt (left) and the Health Department's regional director, Mr Ian Marshman, sign their first health service agreement contract.

Photograph: Simon Hoey.

"That being so, this negotiated contract with the Victorian Health Department ensures that the Hospital's objectives meet community, regional and statewide objectives and expectations", he said.

Unlike other large institutional hospitals, St. George's does not have resident medical staff or an emergency casualty department. But it provides specialist medical attention through a 24 hour on-call system. "St. George's is a public community hospital in the true sense of the word," Mr Kinloch said.





HOSPITAL HONOURS WORK OF KEW WOMEN

The achievements of two remarkable workers for the Royal Women's Hospital, Miss Mary Plumridge and Mrs Nancy Clarke, were commemorated at a special ceremony at the hospital on September 18.

The hospital dedicated three mobile blood pressure monitors to formally recognise the special contributions made by the two Kew women over more than thirty years. One monitor, donated by Kew Council, was dedicated to the memory of Mary Plumridge and the other two were dedicated to Mrs Clarke. They were donated by the hospital's Kew auxiliary.

Mary Plumridge, who died earlier this year, was a member of the Kew auxiliary of the Royal Women's Hospital for 29 years and its secretary for 25 years.

But she is perhaps better known throughout the hospital for having started its patient library service. Miss Plumridge began the service in 1970 after the hospital's chaplain, Deaconess Elizabeth Alfred, saw the need for recreational reading for patients.

Armed with a basket of books, Mary Plumridge set off on her rounds distributing books to patients and through her efforts and those of other volunteers, the service has grown into the twice-weekly multilingual service it is today.

Nancy Clarke is best known among the hospital's volunteers and the Kew community for having been president of the hospital's Kew auxiliary for 27 years and for her tireless voluntary work and fundraising for the hospital over almost 30 years.

Present at the hospital's dedication ceremony for the two women was the Mayoress of Kew, Mrs Salvina Montalto, members of the Clarke and Plumridge families, members of the Kew auxiliary and hospital staff.

The Mayoress of Kew, Mrs Salvina Montalto, with Mrs Nancy Clarke and her family (above) and members of the Plumridge family (below).

MERRI YARRA COMMITTEE DISBANDS

The Merri Yarra Municipal Protection Committee, formed in 1987 to fight the State Government's plan to overground the Brunswick to Richmond powerline, has disbanded.

The decision to disband came at the August meeting of the Committee following its successful lobby campaign which helped to convince the Government to abandon its proposal to locate the powerline above ground in the Yarra River valley.

Kew Council was one of seven councils with representation on the Committee. The others were Brunswick, Hawthorn, Richmond, Collingwood, Northcote and Fitzroy Councils. Yarra Bend Park Trust and Studley Park Conservation Society were also represented.

The Mayor of Kew, Councillor Michael Montalto, paid tribute to the work of the Committee and said that without its members' unfailing commitment, the Government's staunch resolve for overgrounding the line may never have been overturned.

Kew Council strongly supports the recommendations of the Powerline Review Panel, including the proposal to underground the line away from the River valley. The Panel's recommendations are now being considered by the State Government.

COUNCIL WASTE DISPOSAL COSTS UP 30%

Kew Council's waste disposal costs are up 30 per cent on last year and could cost the Council a quarter of a million dollars over the next year.

The figure was released by the Council during its annual budget considerations last month.

The reason for the increase is a 65 per cent rise in tipping charges by the Shire of Whittlesea which provides tipping facilities for several Councils in the northern region refuse disposal group. This has in turn led to increased charges by Heidelberg Council for material deposited at the Heidelberg Transfer Station.

Kew Council and Kew residents use the Heidelberg Transfer Station in Waterdale Road to dispose of weekly collections of household garbage and other refuse. The material is then transported to Whittlesea's tip.

The new fees mean that Kew Council will be paying almost \$20,000 per month in tipping fees. The figure includes the cost of depositing weekly garbage, as well as the face value of the four free tipping vouchers issued to Kew households

annually.

Acting Chief Executive and Manager Engineering, Mr Ian Poulter, said "The increase in costs to Council is substantial but it does represent the increased cost of providing waste disposal facilities and of treating waste in an environmentally sensitive way."

Mr. Poulter said the rise in tip charges reinforced the need for every resident to look at minimising the amount of waste they produce and for Council to minimise the amount of waste in Kew through other programs.

One program being considered by Council is the encouragement of backyard composting.

Mr. Poulter said the Council was considering buying composting units in bulk and selling them to residents for the cost price.

He said a study of the composition of refuse where standard bins (55 litre) are used, showed that food wastes amounted to 76 kilograms per person per year. If, as a result of introducing backyard composting bins each resident cut their food waste disposal by even one quarter, the Council would save \$20,000 per year in disposal costs, he said.



KEEPING YOU INFORMED

Frances McGrath, social worker at Kew and Hawthorn Citizen's Advice Bureau, says that after three months in the job she's amazed at the range of problems that people bring to the CAB's.

Her role as confidante prevents her from discussing individual cases but Fran says people come to her for help with all kinds of personal, emotional or relationship problems.

After twenty years working in hospitals in Melbourne, Perth and overseas, Fran says she was keen to work at the grass roots level of the community.

In her work for the CAB's Fran supports the trained volunteers who run the Bureaux each weekday and she takes her own "clients" for extended sessions.

"Sometimes people only need one or two sessions to sort out their problems but others need ongoing help. Whatever their need I'm available at the Bureaux between 11 a.m. and 3 p.m. weekdays or I can take appointments by arrangement at other times."

Fran says the Citizen's Advice Bureaux provide a valuable service to the Kew and Hawthorn communities. "I'm amazed at the range of requests and problems that people bring to the CAB's and at the extensive information and referral service they provide. The bureaux attract a wide variety of people and situations and their needs continue to grow."

"I'm also impressed by the great care and concern shown by CAB volunteers when handling all the inquiries that come their way."

Ms. McGrath said all the services provided at Kew and Hawthorn Citizen's Advice Bureaux, including those she offers, are free and confidential.

The Bureaux are open on weekdays from 11 a.m. to 3 p.m. A free legal service operates on Tuesday evenings at Kew and Wednesday evenings at Hawthorn, both between 7.30 p.m. and 9 p.m.

Kew and Hawthorn CAB's may be contacted during opening hours by ringing 861 5244, Kew, and 819 2772, Hawthorn.

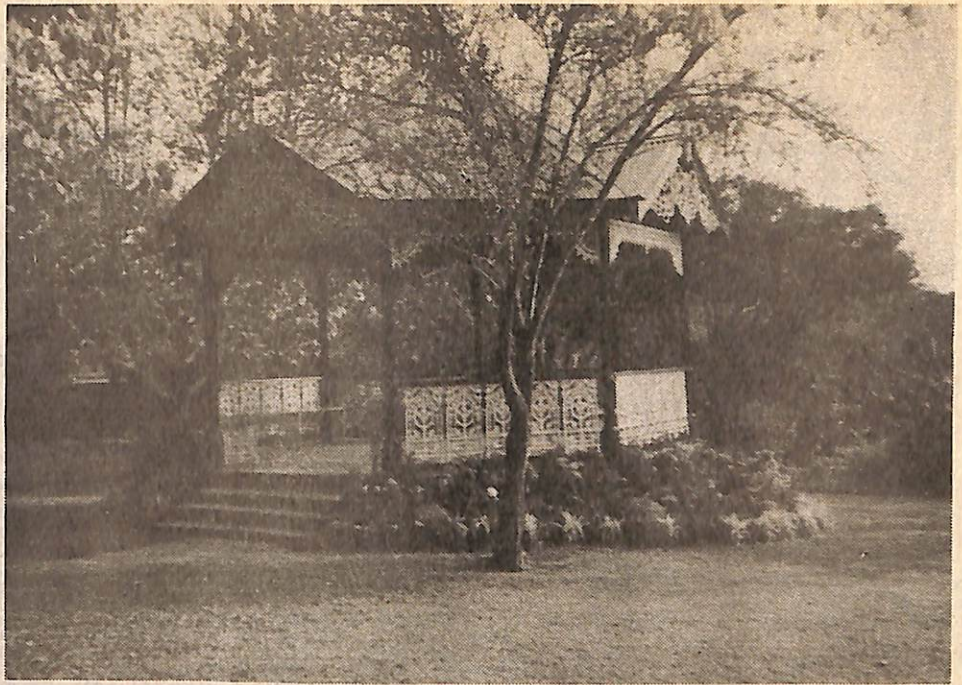
OVERDEVELOPMENT REVIEW PUT ON HOLD

The Minister for Planning and Environment, Mr Tom Roper, has put on hold Kew Council's request for a review of dual occupancy provisions in overdeveloped parts of the City.

In a letter to the Council, the Minister said his department would not look at Kew's request until the results of a review of the dual occupancy provisions contained in the metropolitan regional planning scheme, were known.

Kew Council asked the Minister to review dual occupancy provisions in April after a survey by its town planning department identified areas in east, central and north Kew as being overdeveloped.

The Council believes further multi-unit development will only serve to gradually undermine the balance in the mix of housing stock in these areas. By demolishing single houses to make way for multi-unit development, families with children may not be attracted to the area.



The Band Rotunda, Alexandra Gardens. New facilities are being installed to make the gardens more accessible to people with disabilities.

KEW'S PARKS — IS THERE ROOM FOR IMPROVEMENT?

Kew Council's study of parks and playing fields is finding that while Kew has worthy recreation reserves, some residents believe there is room for improvement.

Reserves like Victoria Park are seen as valuable historic features that need to be conserved. Others such as Hays Paddock and Willsmere Park billabong are highly praised and the variety of Kew's open spaces is seen as a plus.

But as some residents see it Kew has insufficient open space in its south-eastern sector, some reserves are too exposed to the elements and others are poorly drained.

Other issues raised are inadequate provision of facilities like toilets, tables, shelters and barbecues for family picnics; insufficient play areas and facilities for older children; and children's play equipment which needs upgrading in some reserves.

Women's sports such as netball, and minority or non-traditional sports such as volleyball and badminton, are seen to be poorly catered for. Some residents feel more space should be allocated to sports such as soccer, football and hockey while others would like to see the Outer Circle Railway reserve upgraded.

Do you agree with these views? And are they the only issues which need to be addressed?

Kew Council would like to know what you think about the City's open space facilities. The Council has engaged consultants to help it prepare an open space strategy plan based on your needs and aspirations.

The consultants are working with a steering committee of Councillors and Council staff appointed to direct the study. By February 1990 the Committee expects a draft strategy will be completed for Council's consideration.

If you would like to contribute your views you can write to Mr Richard Marton of Travers Morgan Pty. Ltd., Freepost Box 121, Melbourne 3004.

If you need more information you can contact Kew Council's Recreation Co-ordinator, Wendy O'Neill, on 860 5218.

★ ★ ★

PLAYGROUP ENROLMENTS OPEN

Woodlands Avenue Playgroup in East Kew is accepting enrolments now for 1990.

The playgroup, which has been operating for 10 years, is run by a committee of parents and is open to all Kew Families with pre-school children.

Almost 80 families use Woodlands Avenue Playgroup for one two-hour session per week. The playgroup offers a wide range of indoor and outdoor activities under the supervision of two salaried staff — a kindergarten-trained Directress and her assistant. Staff set up all the equipment and tidy up afterwards.

Most parents remain with their children but care is available to children over two years for an additional fee. Children attending the three year-old group on Tuesday mornings can be left in care when both parent and child are confident with the separation. The three year-old session is provided for children who do not attend three year-old kindergarten.

Jennifer Bede, Directress of the playgroup, said "Our programs are great fun and are a learning and socialising experience for children. But parents too meet new friends, make new acquaintances and build up new support networks."

Parents who would like to see Woodlands Avenue playgroup in action can ring 859 6475, weekdays between 9.30am and 11.30am, to make arrangements to visit.

For more information or enrolments contact Jennifer Bede on 859 6475 during the above hours, or 598 2327 after hours. Sharon Jones can also help with enquiries on 859 1677.



NEIGHBOURHOOD WATCH

Many Kew residents are active in Neighbourhood Watch but there are still some who do not know what the program is all about.

Neighbourhood Watch is a community-based crime prevention program aimed at minimising the incidence of preventable crime in a defined area.

It is also designed to make residents more aware of their immediate neighbours by developing more of an 'old-fashioned' approach to our sense of community.

The purpose of Neighbourhood Watch is to get people within a defined area thinking about activities which seem suspicious and looking out for unusual happenings in their neighbourhood. By participating in this way, the Police have found that the incidence of reporting crimes or potential criminal acts increases markedly and charges can often be laid because firm evidence has been gathered.

The second arm of the program is 'Operation Identification', the marking of personal and household items of value which if stolen can easily be identified and in many cases can be returned to the owner.

Neighbourhood Watch groups usually meet monthly to talk with Police about problems in their area, to get an update on area crime statistics, and to get advice about making their homes and property more secure.

Meetings for November and December are:

Area H27 meets on Tuesday, November 28 at 7.30pm in Kew Library Complex hall, off Cotham Road. All residents welcome.

Area H001 meets on Monday, December 4 at 7.45pm at Kew Library Complex hall, off Cotham Road. New members welcome.

Area H26 has its annual general meeting on Wednesday, November 8 at 7.30 pm at Kew Bowling Club, Wellington Street. Guest speaker. All welcome.

Residents with enquiries about Neighbourhood Watch should contact the co-ordinator of 'H' district on 885 7270.

BOWLS AT EAST KEW

East Kew Bowls Club held a Friends and Neighbours night in October to introduce newcomers to the game of bowls.

The night was a great recruiting success, but the Club still wants to spread the word that lawn bowls is a very enjoyable and sociable sport.

Free tuition is available for beginners and there is no Club joining fee. Experienced male and female bowlers are also welcome at the Club.

Enquiries may be made by contacting Ken Dobson on 830 5526 or Thelma Andrews on 857 8873.

DEADLINE

Copy for the December/January edition should reach the Municipal Offices by Monday, November 13.

Contributors should note that there will not be another edition until February, 1990. Closing date for the February edition is Monday, January 8.



Kew Bowling Club secretary, Mr Saul Spielman, limbers up for the new season just started.

Behind Saul is the original portion of the Clubhouse which was built last century. Established in 1880, Kew is the second oldest bowling club in the Eastern suburbs.

Kew Bowling Club has vacancies for men and women members and beginners. Tuition is free. Inquiries on 861 9650 or 859 8473 after hours.

Photograph: Doctor David Pitt

KEW BROTHERS ROWED FOR GOLD

To reach an elite level of any sport requires a commitment lacking in most of us.

But for Kew rowing brothers, Bradley and Eugene Kininmonth, their commitment to an arduous daily regimen and their determination to succeed, led them to selection in the rowing team chosen to represent Australia at the World Student Games. The Games were held in Duisberg, West Germany, in August.

Rising well before dawn each morning, Bradley and Eugene spent several hours at rowing practice, put in a full day at their university studies and then returned to the boatsheds at night for more training.

Actual physical training and several foregone activities and opportunities are not the only sacrifices the boys have had to make. Their high level of commitment to their sport has meant taking time out from their studies, losing potential income, and despite Federal government funding and donations from local sponsors, finding \$2,500 each to contribute towards the cost of representing Australia at the Games.

"Without the help of our local sponsors we would have been up for a greater share of the cost," Bradley said. "We're extremely grateful to Beta Being sports store, the Clifton Hotel, Harrigans Hotel, Kew Council and the Kew Recreation Centre for donating money towards our costs."

Despite limited media coverage in Australia, the World Student Games are recognised worldwide as being second only to the Olympics in terms of an international sporting event. In the last few years they have attracted more than six thousand competitors from over one hundred and fifty countries.

The men's eight event in which the boys competed at the Games saw Australia defeat Great Britain and Turkey to get into the final. But the team was beaten in its efforts to win gold and came in last behind the USA and France. Medal winners were Italy (gold), USSR (silver) and West Germany (bronze).

Bradley and Eugene's participation in this year's Games is only the second time they have rowed together competitively. Both were in Monash University's mens eight team which won the blue ribbon event at the Australian Universities rowing championships — The Oxford and Cambridge Cup — earlier this year.