

KEWRIOSITY

City of Kew, Municipal Offices,
Charles St., Kew. 3101. Telephone 862 2466

May, 1989

CANADIAN VISITORS TO WALLENBERG GARDEN

A Canadian couple who paid a visit to Kew's Raoul Wallenberg Garden in November last year, wrote recently to Kewriosity.

The couple, Mr and Mrs Janacek, were particularly interested in visiting the garden because Mr Janacek is an active member of the Mississauga Raoul Wallenberg Committee of Toronto, Canada.

Raoul Wallenberg, a Swedish diplomat serving in Hungary during World War 2, is credited with saving the lives of more than 120,000 Jews. Through ingenuity and heroism, he issued Swedish working papers to 20,000 Jews and indirectly helped another 103,000 people escape the Nazi death camps.

When the Soviets advanced on Budapest, Raoul Wallenberg went with them to the provisional Hungarian Government to discuss relief work. That was on January 17, 1945. He has not been seen in the West since.

Raoul Wallenberg Committees around the world have been working to secure the release of Mr Wallenberg from the USSR. They believe he has been imprisoned there since 1945, although the Soviets say Mr Wallenberg died in a Moscow gaol in 1947.

Mr Janacek writes that witnesses reported seeing Raoul Wallenberg being treated for frostbite at a prison hospital on the Sino-Soviet border, as recently as December 22, 1986. He expressed the view that "Glasnost gives us renewed hope for Raoul's release in 1989".

The Raoul Wallenberg Garden is on the corner of Princess Street and High Street, at Kew Junction. Former councillor and Kew Mayor, Mrs Jill O'Brien, was an ardent campaigner for the garden which was officially opened during her term of office as Mayor, on May 27, 1984. The Raoul Wallenberg Garden is the only one in Victoria named after this exceedingly courageous man.



Canadian visitors, Mr and Mrs Janacek, pictured outside Kew's Raoul Wallenberg Garden, at Kew Junction.

BRINGING UP KIDS IN THE NINETIES

Doctor Christopher Green, Paediatrician and Head of the Child Development Unit at Sydney's Children's Hospital, was guest last month at a local conference on "Bringing Up Kids in the Nineties".

The conference, on April 8, was at Melbourne University's School of Early Childhood Studies, in Madden Grove, Kew.

Doctor Green is perhaps better known as the best-selling author of "Toddler Taming" and "Babies" — now selling in a world market.

In his keynote address, Doctor Green focused on the need for parents to be confident when parenting their children. He remarked that perhaps he should have called his first book "Parent Taming", rather than "Toddler Taming".

After his address, Doctor Green answered questions from the 200 strong audience of parents and child care professionals, before mingling informally over lunch.

At the afternoon session of the conference, parents joined six workshops presented by Staff at the School of Early Childhood Studies, and professionals in the early childhood field.

Parents received advice about what to consider when selecting a Child Care Centre, how to foster helpful relations with caregivers and teachers, and how to educate children for health and safety.

Three other sessions gave advice on extending communication and providing positive self-images to young children, discussed the problems being faced by families in the 90s, and considered ways of enhancing and developing parent and child self-esteem.

Until January this year, the Melbourne University School of Early Childhood Studies was known as The Institute of Early Childhood Development. The School is Kew's only tertiary institution.

Dates for May

In this column it is not possible to list the date of every meeting and function held in Kew. Readers are advised to check short feature articles throughout the newsletter which provide such details, or the notices column on page four.

1

Nursing Mothers' Association discussion meeting at 8 p.m. Ring 817 5721 for venue and details.

2

Tuesday. Asthma Education Sessions at Asthma Foundation, 2 Highfield Grove, Kew, at 10.30 a.m. and 7.30 p.m. Talk by a specialist, video, and demonstration of techniques. Enquiries: Margaret Hampson, 861 5666.

3

Wednesday. Children's immunisation session, North Kew Maternal and Child Health Centre, 152 Peel Street, at 9 a.m. to 10.30 a.m. Note: Measles/mumps immunisation given only during 9 a.m. and 10 a.m. Enquiries: 861 9466.

4

To May 15, Rotary Club of Kew Art Show in Kew Library Complex Hall and the basement room in Kew Municipal Offices, off Cotham Road. Enquiries: Alan Fluck, 861 9002.

And May 25. Penguin Club of Australia meets at 7.30 p.m., at Kew Library Complex Hall, off Cotham Road. Enquiries: Margot Harrison, 818 6127.

10

Hyde Park Fellowship meeting at 1.30 p.m., Hyde Park Uniting Church, 152 Pakington Street, Kew. Enquiries: Mrs McMillan, 861 9243.

Wednesday. Kew Historical Society meeting at St. Hilary's Anglican Church, John Street, at 8 p.m. Tour of the Church and account of its history. All welcome. Enquiries: Sue Leong, 817 4660.

Kew Probus Club for Women meeting at Kew RSL Hall, 63 Cotham Road, 10.30 a.m. Reminder for members. Guest speaker: Mrs Mary Wells. Topic: Around the World on a Bicycle.

11

And May 25. Kew Branch, Save the Children Fund, meet in Kew Library Complex Hall, at 9.30 a.m. New members welcome.

Thursday. Kew Garden Club meets at Senior Citizens' Centre, 533 High Street, Kew, at 8 p.m. Topic: Chrysanthemums. New members and visitors most welcome. Enquiries: 861 7057.

15

Monday. Kew Auxiliary, Royal Victorian Eye and Ear Hospital at 1.30 p.m. For change of venue ring 817 3584.

16

Tuesday. Evening immunisation and adult rubella session at Kew Library Complex Hall, 6.30 p.m. to 7.30 p.m. Note: measles/mumps immunisation only given between 6.30 p.m. and 7 p.m. Enquiries: 860 5245.

17

Camberwell Film Society screening "Whitsun Excursion" at 7.45 p.m. sharp, Camberwell Library Theatre, off Camberwell Road. Enquiries: Jean Catford, 288 6299.

Wednesday. Children's immunisation session, East Kew Maternal and Child Health Centre, 21 Strathalbyn Street, between 9 a.m. and 10.30 a.m. Note: measles/mumps immunisation only given between 9 a.m. and 10 a.m. Enquiries: 859 1380.

Kew Arthritis Self-Help Group meeting at Kew Library Complex Hall, off Cotham Road, at 10.30 a.m. Guest speaker: Fay O'Brien, Arthritis Foundation Opportunity Shop. Gifts for shop appreciated. New members welcome; morning tea served. Enquiries: 862 2021.

Wednesday. Know your Community Lunch, Kew Community House, 6-8 Derby Street. Guest speaker, Christina Asquini, senior child protection officer with Community Services Victoria. Topic: Child protection in Kew and the inner Eastern region. 11.30 a.m. Stay for lunch for \$1. Enquiries: 862 3126.

24

Wednesday. Community Walk leaves Kew Community House, 6-8 Derby Street, promptly at 1 p.m. Visit to Hawthorn Parks. Cost: \$1 donation. Enquiries: 862 3126.

Nursing Mothers' Association morning tea. Enquiries: 817 5721.

25

Kew Probus Club for Men meets at Kew RSL Hall, 63 Cotham Road, at 10 a.m. Guest speaker: Mr Neil Smith of the Gas and Fuel Corporation. Visitors welcome with a member. Enquiries: Charles Hoare, 848 8122.

Thursday. Kew Auxiliary, Royal Women's Hospital, meets 1.30 p.m. in Kew Library Complex Hall. Enquiries: Mrs Dietrich, 861 6059.

26

Friday. First night for "Count of Luxembourg", Franz Lehár's operetta, by Viola Musical Comedy Society. Other performances May 27 and June 2 and 3. Enquiries: David Keane, 383 1486.

Useful Advice on Property Numbering

The number of your home or property is a vital piece of information for many people in the community.

Should you need to call an emergency service such as fire, ambulance or police, emergency service personnel need to locate your property as quickly as possible.

Trades and maintenance people, meter readers and delivery personnel all need to read the number of your property quickly and accurately. You may end up with unwanted repairs, incorrect accounts, or unwanted goods if these people cannot identify your property. And you could foot the bill if the taxi you've called has had to drive up and down the street looking for a non-existent number on a seemingly non-existent building.

Service personnel like "Meals on Wheels", home care and nursing agencies, and social welfare providers, can spend valuable time in an unfamiliar area looking for the number of a home. They could better utilise their time by spending it with the person or family in need.

Owners or occupiers of properties are required to identify them with the street number or numbers allotted by Council.

Numbers should be placed on the gate post or in a conspicuous position on the front fence adjacent to the main entrance from the street.

If a property does not have a front fence, the number should be placed immediately above the main entrance doorway where it can be clearly seen.

Numbers should be well placed, not obscured by foliage, and not faded or worn.

Property owners and tenants are advised to check property numbers now and repair or replace them where necessary.

KEW LIVING 1988

Kew Living 1988, a photographic record of Kew produced during Australia's Bicentennial year, is now available at the Kew Library and local newsagencies and bookshops.

The book, produced by the Kew Bicentennial committee under the auspices of Kew Council, documents in 66 black and white photographs, the inhabitants of Kew in a single year, 1988.

The book is priced at \$39.95 for Kew residents and \$48.00 for non-residents.

MEETING DATES

- May 9** Standing Committees, 7.30 p.m.
May 16 General Purposes Committee, 7.30 p.m.
May 23 Council, 8.15 p.m.

Meetings are held in the Committee Rooms and Council Chamber at the Municipal Offices in Charles Street and all are open to the public.

Copies of agendas are available in the Kew Library prior to each meeting.

Commentary

Residents will know, by now, that Council is committed to preserving the heritage of Kew. We intend to formulate a conservation strategy. The Kew Conservation Study we commissioned in 1986 and which was completed last year has given us suggested classifications and controls.

We are, however, acutely aware of concern in the community about the degree of planning control suggested by the Study. We have taken positive steps to take those concerns on board, and we place prime importance on consultation with those likely to be affected by the decisions we must make.

In late February, Council sponsored a public meeting on the Kew Conservation Study. At that meeting we were asked to appoint a small representative working party who could review the Study recommendations with the Kew Heritage Committee and propose an appropriate strategy.

We have asked the working party to propose suitable planning controls and ways in which Council might introduce these. We have asked them to do so in a way which reflects Council's own values — particularly its commitment to

thorough community consultation on this highly significant issue.

Conservation planning controls need not be implemented across the board. We could instead adopt an incremental approach where implementation involved small areas at a time, may be street by street, or areas commonly agreed to by the residents within them.

The working party is drawn from candidates who nominated for selection at the February meeting. When making our appointments we sought, as far as possible, to achieve representation from all historically significant properties (UCA1 and UCA2 in the Study) and we tried to achieve a reasonable geographical spread while acknowledging that most properties graded one and two are in Sackville and Studley Park Wards.

Because of the concerns expressed by schools and churches, we have suggested that the working party recruit representatives from those institutions.

The working party will be called the Kew Conservation Study Committee. We expect it to hold its first meeting within the next two



Cr. Allen Martin, Mayor of Kew

weeks, and we have asked for a **preliminary** report on its recommended strategy by the first week of July.

Copies of the Kew Conservation Study are available for examination and consultation in Kew Library.

Kew Statutory Planner, Brian Goyen, will help clarify points of interest or items of concern. You can ring him on 860 5249.

KEW CONSERVATION STUDY

In 1986, Kew Council commissioned a study of places with potential historic, architectural or landscape significance in Kew. The study was completed in May last year.

The Study identified, evaluated and documented the built and environmental heritage of Kew. It recommended a grading system which reflects the importance of a building or area, and the priority given to it for conservation.

The Study suggested a comprehensive program for the conservation of the City's heritage and its integration into the general planning framework of the Kew Planning Scheme.

If implemented as recommended, the Study would mean owners freedom to develop their land and maintain their property as they wished would be changed to some degree.

In August 1988, Kew Council embarked on a campaign to publicise the Conservation Study to residents. A community information bulletin was delivered to properties and further publicity for the Study was generated through Kewriosity and Progress Press. Copies of the study were made available for consultation in Kew Library.

In October, 1988, a second community information bulletin encompassing a questionnaire, was delivered to property owners.

Responses to this questionnaire, although small — and the many submissions received as a result of Council's publicity campaign — gave Council an overview of community opinion on the Study recommendations.

The following table summarises the questionnaire responses by property grading. It indicates the level of support for, or opposition to, conservation controls.

A Council sponsored public meeting on the Conservation Study in late February this year, asked Council to appoint a representative community group to review the study and find the most appropriate means of introducing conservation controls. The committee is expected to start its work early this month and present a preliminary report to Council in July.

Enquiries about the composition and work of the committee, or the Kew Conservation Study, should be directed to Brian Goyen, Statutory Planner for the City of Kew, 860 5249.

*Property Gradings as recommended by Conservation Study	Responses	Attitude to Conservation Controls generally		Attitude to Conservation Controls as recommended in Conservation Study	
		Support	Oppose	Support	Oppose
Grade A Properties	10	6	4	5	4
Grade B Properties	27	15	9	9	15
Urban Conservation Areas					
One and Two	55	38	11	35	11
Not Recommended	90	60	25	53	26
Not Stated	44	17	24	14	13
TOTAL	226	138	74	116	68

*This figure represents the grading respondents believed their properties to have, based on their understanding of the Study.

The gradings may not necessarily be the same as the actual gradings recommended by the Kew Conservation Study.

HERITAGE ADVICE FOR LOCAL HOME OWNERS

Kew Council is collaborating with the Heritage Branch of the Ministry for Planning and Environment, to provide the community with comprehensive advice on restoration and conservation of local properties.

Through the Heritage Advisory Service, residents can find out the most appropriate way to undertake restoration, repairs and alterations to their homes, and business people, to their premises.

Advice on the construction of new buildings in historically significant areas, the addition of new rooms to existing properties, and the selection of appropriate materials, will be available through the service.

Service advisors can help identify problems like damp walls or urgently needed drainage work that an inexperienced person might overlook. But residents should note that the service is not intended as an alternative to employing an architect or designer.

Service users can also seek advice on exterior painting, landscaping and replacing fences or verandahs.

From next week, the Heritage Advisor will be available for consultation one day in every three weeks.

Because of the nature of the service, it is necessary to make an appointment to see the advisor either at the Municipal Offices in Charles Street, or on site.

Appointments may be made by telephoning 862 2466 during Council's business hours.

The Heritage Branch of the Ministry of Planning and Environment is providing the Heritage Advisor, an architect experienced in restoration and conservation, to the Cities of Brighton, Essendon, Hawthorn, Northcote, Sandringham and Kew.

WHY WE SHOULD THINK AGAIN

by Keith Lodge,
Architect and Town Planner

A summary of Mr. Lodge's address at the public meeting on the Kew Conservation Study on February 27, 1989.

Mr. Lodge was invited by Kew Council to address the meeting and Council agreed to publish this summary of his address at the request of the meeting.

I do not oppose conservation of Kew's heritage and the preservation of distinguished and historically important buildings and places.

I believe I share this position with most, if not all, Kew residents.

But I do question the proposed methods to achieve this ideal.

Applying conservation controls requires responsible and sensitive planning administrators. Fortunately, Kew Council and Council Officers enjoy a very high reputation for planning responsibility which has been contributed to by open committees, direct consultation, and negotiation.

The conservation study is a magnificent record of Kew's built spaces and its authors are to be complimented. The buildings are well illustrated and recorded in Volume 2. It is a significant heritage study.

That does not, however, qualify it to be accepted in its total classifications and recommendations into the Kew Planning Scheme.

My objections are based on four criteria.

1. The conservation study lacks academic research to support the recommendations required for a planning document.

Private buildings classified "A" have their interiors rigidly controlled and owners carrying out the most minor works must act under the direction of a State, not Local Government, Authority.

None of the buildings with this classification and recommended to have rigid restrictions on their internal development were inspected internally or in detail, prior to inclusion in the Kew Conservation Study.

2. The planning recommendations lack consideration of the consequences of the planning controls on affected owners.

Greater consideration must be given to the impact of the "A" classification on the owner, particularly in an active building. Recommended "A" classifications must only be made after exhaustive research and consultation with the owner.

School buildings, some of which are classified "A", are subject to constant internal change as knowledge in education and educational methods grow. Their internal spaces have life and vitality. Many schools may have difficulty living with their proposed classification.

Similarly, with a family home, its internal spaces constantly change as the family develops through various stages.

3. The recommendations have not considered the possible financial loss to some affected owners.

Owners of classified homes will be controlled, or in some cases prevented from making changes. They may be directed to carry out their proposed changes in a different way. It is possible that an owner

may be prevented from re-roofing in any material but slate, or re-paving in any material other than imported tiles for the verandah.

Others will be prevented from extending or demolition and reconstruction.

These conservation costs may be extremely high to some owners.

To overcome objections to this possible imposed financial loss, it may be desirable to seek volunteers to be included in the planning. There may be sufficient owners who would be pleased to be a part of a conservation area or have their house classified.

If this were practical the scheme may be implemented with minimum financial loss and loss of personal freedom through controls and restrictions.

If not, some form of compensation should be considered.

4. The suggested number of areas and structures is unnecessarily large, over-specified, and a hindrance to the future orderly development of Kew.

Many structures seem to have been included for romantic nostalgia rather than carefully selected for their historic significance.

At present there are eleven structures in Kew which are classified "A". These have been judged by State and National Bodies to be of sufficient historical quality and of outstanding merit to be included on the government register.

The Kew study suggests eighty buildings with "A" classifications. Sixty-nine buildings not identified previously by responsible authorities have been included. The recommendations are not research based.

Of the 250 structures given "B" classifications, some have no architectural merit and many are nondescript and insignificant structures.

5. If Council surveys the community for endorsement of conservation the several thousand structures are classified "C". Although, each in itself will not be subject to any specific control, all will be affected in their development or upgrading under the proposed Urban Conservation Area Controls.

Vast areas of the municipality are to be zoned conservation areas. There appears to be over-preservation.

Some planning and control is essential if we are to live in harmony in a diverse community. But controls such as those advocated in the Kew Conservation Study have the potential for conflict. The complexity and difficulty of administering urban conservation controls may be reduced by:

1. Reducing the selection of classified structures and areas to the minimum and only to those that can be clearly and adequately justified.
2. Seeking volunteers for inclusion in the classifications from the current list.
3. Considering the substantial financial loss which may be incurred by some owners and making provision for compensation.
4. If a living functional building is agreed to be of such exceptional quality that it requires

"A" classification, considering facade only classification as an interim measure.

5. If Council surveys the community for endorsement of conservation the question to be asked is: "Do you support conservation and are you prepared to contribute to the cost?"

BOOKS FOR SALE

The Friends of Kew Library are continuing their monthly mini-sales of used books following successful sales in March and April.

The sales, on the third Sunday of each month, are held in the lobby of Kew Library, from 2.00-5.00 p.m.

One of the Friends' organisers, Mr. Eric Flynn, said "As the library is open on Sunday afternoons, our mini-sales offer patrons the ideal opportunity to buy good used books and to borrow from the library at the same time".

Mr. Flynn said a wide variety of books, including some for children, are available for sale at bargain prices. Proceeds from the mini-sales are used to purchase equipment and new books for Kew Library, acknowledged as one of the best municipal libraries in Melbourne.

Residents who want to donate books suitable for sale can leave them at the library's circulation desk during opening hours or can drop them in the book return chutes after hours.

Sale items should be clearly labelled and marked to "The Friends of Kew Library".

For information about membership of The Friends of Kew Library, or their social and fundraising activities, contact Eric Flynn on 859 6415.

1629 ON THE AM BAND

Retirement gives people the opportunity to indulge in a wide range of interests, some of them new ones.

Kew Planning for Retirement Group caters for the need to develop such interests by holding regular small group meetings and quarterly general interest meetings.

For its general interest meetings on May 25, the Group has invited Marjory Lane from 3RPH — Radio for the Print Handicapped — to address its members and interested Kew residents.

Kew residents and members of Kew Planning for Retirement Group who would like to hear about 3RPH, should meet at Kew Library Complex Hall, off Cotham Road, at 8.00 p.m. on May 25.

Marie Evans, Group secretary, can help with enquiries about the meeting or the Group's activities and membership. Phone 817 1814.

FESTIVAL MEETING

Kew Festival Committee, through Kewriosity, is issuing an open invitation to Kew residents to attend its Annual General Meeting on May 18.

The meeting, being held at the Municipal Offices in Charles Street, starts at 7.30 p.m. A light supper will be served at the conclusion of the meeting.

Kew Festival Committee is a group of volunteers who plan and run the Kew Festival each year.

The Committee wants to have as its guests at the meeting, residents who are willing to help plan and organise next year's Kew Festival, or residents who have some comments to make about this year's Festival.

It also wants to hear from people unable to attend the meeting.

Letters can be directed to the Kew Festival Committee, C/- Alan Chung, Executive Officer at Kew Council, or telephone 860 5202.

COMMUNITY HEALTH VISIT TO KEW

Two health professionals from Richmond Community Health Centre will be guests in Kew at the end of this month.

Audiologist, Donna Morris and Speech Therapist, Louise Bailey, have been invited to discuss the development of hearing, speech and language in babies and young children.

The discussion, arranged in conjunction with Kew's Maternal and Child Health Centres, will be held on Wednesday May 31, between 1.30 pm and 3 pm, in Kew Library Complex hall, off Cotham Road.

Mothers who need to arrange childcare for babies or young children can contact Kew Occasional Care Centre, on 859 6459, where quality care is provided for a moderate fee.

For enquiries about the discussion session, please contact Wanda Romanowski, Maternal and Child Health Sister at Strathalbyn Street Centre, 859 1380.

CRAIG WILL KEEP THE WHEELS TURNING

The newest member of Kew's Domiciliary Services Team is Craig Kenny, Supervisor of the Meals-on-Wheels Service and Senior Citizens' Centre Supervisor.

Craig, who completed his certificate of catering at William Angliss College, spent more than five years preparing food for the residents of Caulfield, Nunawading and Richmond, before joining the City of Kew.

His main aim, he says, is to make sure that the food provided to meals-on-wheels recipients is nutritious, wholesome, varied and acceptable.

But he also wants to be an active and effective member of Kew's Domiciliary Services Team, as well as a useful resource person for the Senior Citizens' Club Committee.



New Co-ordinator for People with Disabilities

Kew's new Recreation Integration Group Co-ordinator, Jan Bottcher, will promote recreation to people with disabilities and help them join in local recreational and leisure activities.

An important aspect of her job is that of helping research and identify the recreational needs of Kew people with disabilities.

There are many reasons which stop disabled people joining in mainstream recreation and leisure opportunities and Jan will identify these barriers before drawing up strategies to overcome them.

To do this, Jan will collaborate closely with disabled people and local recreation and leisure clubs.

People with disabilities who would like to join in local recreation activities, or would like further information on the Kew Integration Group, should contact Jan Bottcher at Kew Community House.

Jan is at the House on Wednesday and Thursday each week between 9.30 a.m. and 2.30 p.m. Phone 862 3126.

She also welcomes enquiries from local recreational clubs who would like people with disabilities to participate in the activities on offer.

Canterbury move for Care-Force

Care-Force Inner East has moved from its base in Hawthorn to new premises at 18 Balwyn Road, Canterbury. The new telephone number is 836 3311.

Care-Force has a variety of services available free of charge to families of dependent children. Individual and group services include counselling, practical help within the home, financial counselling and assistance with developing support networks for families under stress or feeling isolated.

CWA Not Just for Country Women

The Country Women's Association of Victoria, or CWA as it is fondly known, is not just for country women.

With branches in cities and towns throughout Victoria, the CWA is a service organisation open to women of all ages, from all backgrounds. It has affiliations with worldwide Country Women's Associations.

Women who want to widen their interests nationally or internationally, who want to contribute to community projects, or who want to develop new interests like handcrafts, music and drama, can all benefit from membership of the CWA.

Local branch meetings provide opportunities for women who are lonely or have spare time, to meet new friends and become involved in a worthwhile activity of their choice.

The Kew/Balwyn branch of the Country Women's Association meets monthly at East Kew Uniting Church Hall, 142 Normanby Road, at 12.30 p.m.

Guest at their meeting on May 1 is a speaker from Melbourne's Zoological Gardens. Members and interested Kew residents welcome.

Enquiries about membership of the CWA or its activities can be directed to Shirley Robinson, 819 1686.

NOTICES

On Sunday June 4 at the Royal Women's Hospital, members of the hospital's Kew Auxiliary are holding a fundraising stall.

Proceeds from the stall will go towards the purchase of a piece of equipment for the hospital. The equipment will be endowed to the memory of Kew resident, Miss Mary Plumridge and her brother, Richard, both of whom worked tirelessly for the hospital.

Mary Plumridge joined the Kew Auxiliary of the Royal Women's Hospital in 1959. She was Auxiliary secretary for 25 years, but is perhaps better known for her work with the hospital's Patient Library Service. Miss Plumridge started the service in 1970 when she set off on her rounds with a basket of books. Under her guidance the Patient's Library Service grew from that basket of books to the twice-weekly multi-language service that it is today.

To help make the stall a success, the Auxiliary is asking for donations of sale goods. These can be left at Kew Library Complex hall on May 25, between 1.30 pm and 3 pm when the Auxiliary next meets. Or a call to Mrs Dietrich on 861 6059, will help make alternative arrangements.

Kew Lioness Club have invited Patricia McNair to their May 25 meeting to display her china collection and to talk about it.

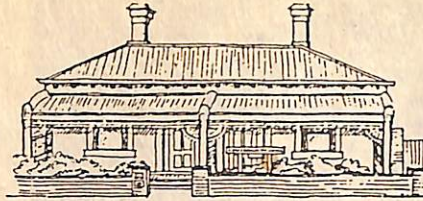
The meeting, at St. Martin's Church Hall, Ropley Avenue, Balwyn, starts at 11.00 a.m. A basket luncheon will be served. Tickets at \$6.50 are available by phoning 859 2758, before May 22.

Proceeds go to St. Andrew's Hospital Benevolent Fund.

Kew Lioness Club meets twice monthly on Monday evenings. Enquiries about membership and activities can be directed to Mrs. Molnar, 819 1561.

KEW COMMUNITY HOUSE

Co-ordinator: Judy Price



6 DERBY STREET, KEW, VIC. 3101
Telephone: 862 3126

We're taking bookings for our second semester classes now and we've got lots of exciting and interesting courses to tempt you.

If you enjoy writing or books — or both — join Lynne in our Book Discussion Group and Writing for Pleasure Group.

Learn how to arrange flowers, make posies and wire a corsage (now coming back into fashion), with Margaret.

Donald Cameron, a well known artist, is offering sessions in life drawing. The emphasis is on action poses and figure in movement. Suitable for any drawing mediums, wash and water colour.

On Monday afternoons you can join Kew Cottage residents and trained pastrycook in classes on cake icing and decorating. Look and learn, or join in if you want to.

Gourmet gifts are delightful giveaways. Let Judith teach you the principles of candying and how to make and present two varieties of gourmet mustard.

Tired of cooking the same old foods? Why not try some new food ideas from the USA by letting Linda teach you how to cook interesting family food for the cold weather?

Still on the subject of cooking — have you bought a microwave and don't know what to do next? In her evening classes, Marion will teach you lots of uses for your new microwave and each week you can eat what you've cooked. Be warned though — this course fills quickly, so book soon.

With increasing emphasis on the need for First Aid, we're jointly sponsoring a St. John's Ambulance First Aid Course with the Maternal and Child Health Centre in Strathalbyn Street, East Kew. Classes are from 7.00 p.m. to 10.00 p.m. at the Centre. At the end of the course you'll get a Senior First Aid Certificate.

If that's not enough to tempt you, we've got classes in Conversational German and Free Migrant English, and new Adult Literacy programs too.

As far as funding and space allows we try to provide childcare for most courses. Book when you book for your course. Cost? A small donation.

If you want more information about our classes and activities ring me, Judy Price, on 862 3126. Or drop in to see us at our House on Wednesdays between 11.00 a.m. and 3.30 p.m. or Monday, Tuesday or Thursday between 9.15 a.m. and 3.15 p.m.

A WELCOME HAVEN



Lynne Matheson outside Community House.

SECOND CHANCE AT READING AND WRITING

Kew's new Adult Literacy Co-ordinator, Lynne Matheson, wants to reach adults who are frustrated in their daily lives by difficulties in reading, writing or spelling.

Lynne, who started her new job in March, says there are several misconceptions about adults who have trouble reading and writing.

Contrary to popular opinion, young unemployed people are not illiterate as a result of poor teaching methods in schools, she said.

"A survey of adult illiteracy in 1977, showed that the majority of people seeking help were between 20 and 40, were employed, and wanted help to improve job prospects or to help their children with reading and writing."

Ms Matheson said people who seek help are often those who dropped out of school early or are those who speak English but do not write, spell or read with confidence. Many migrants fall into this category.

"As with most things, the motivation to improve reading and writing skills must come from the individual."

Some people are motivated by the desire to read story books to a child or to help children with school homework, some by increased demands on reading and writing skills in the work place, others by the need to develop the skills necessary to obtain a motor vehicle licence.

Some people are simply frustrated at not being able to cope with the literacy demands of our society, Lynne said.

To meet some of the needs of Kew residents, Ms Matheson is running a Writing for Pleasure Group and a Book Discussion Group at Kew Community House. The groups offer a small group supportive atmosphere for people who want to pursue their interest in writing or reading, or both.

Kew residents with a friend, neighbour, relative or workmate who has mentioned their literacy needs, can ring Lynne Matheson at Kew Community House on 862 3126.

Lynne is at the House on Monday, Wednesday and Thursday from 9.15 a.m. to 3.15 p.m.

WE WERE WRONG

In the April issue of Kewriosity we printed an article on Mrs. Ivy Smith, long-term resident of Kew and the number one ticket holder at Kew Recreation Centre.

We quoted Mrs. Smith's age as 79 when she is, in fact, 84 and we said that her husband, Jim worked at a Kew timber yard. In fact, Mr. Smith worked at Birds Timber Yard in Box Hill and Beachams Timber Yard in the City.

We apologise to Mrs. Smith for these errors made by our journalist.

A PLACE WHERE YOUNG PEOPLE CAN FEEL AT HOME

Kew Youth Resource Centre at 10-12 Derby Street, provides a variety of activities and services for local young people.

It is a place where young people can seek help with problems relating to home or school, problems of unemployment, or problems of health and accommodation.

It is a place where young people can join after school programs, can drop in when they feel like it, and can feel right at home.

Parents are welcome and can get help with young people's problems, too.

Renovations to part of the Centre are almost complete and the "new look" rooms need furniture. A couch, some chairs, a coffee table and some beanbags, would be a welcome addition. Donations may be made by ringing Maureen McLaughlin, Youth Services Development Officer, on 860 5223.

Residents with skills in music, drama, craft, woodwork, car repairs, cooking — or anything else which would interest young people — are invited to contact Maureen on the above number.

Music for children

There are several classes in Kew for children who like music and movement.

Betty Frey-Taylor is taking enrolments for her pre-school classes and five to seven year old after school classes, now.

You can contact her on 817 3044 for details and prices.

KEWRIOSITY

Kewriosity is a local newsletter which combines Kew Council and community news, and items of interest and importance to local residents.

It is produced and published by Olywn Eaton, Information Officer for the City of Kew, and a community-based volunteer Editorial Committee of (at present) three Kew residents.

Kewriosity is delivered monthly to every property in Kew, usually by community groups who use the deliveries as a fundraiser. If you do not receive your regular copy, contact Olwyn Eaton on 860 5204 or 862 2466.

Kewriosity is printed by York Press, 61-63 Burnley Street, Richmond, 3121. Telephone: 427 9700.

DEADLINE

Copy for the June edition of Kewriosity should reach the Municipal Offices by Monday, May 8.

Contributor should note that unused articles may be held over until the July edition. Items deemed to be of most importance will be given priority.



CALM Speaker for Kew

The Citizens' Against Lawlessness Movement — CALM — was formed to help people avoid criminal attacks and to help crime victims overcome the trauma of crimes inflicted on them.

Volunteers with CALM liaise closely with doctors and psychologists to help the victims of sexual assault, child abuse and personal assault.

They offer a free legal service, give advice on compensation and court procedures, and help with funeral arrangements. They also provide referrals to counselling services and advise on home security and personal safety.

CALM organiser Gayle McDonald, herself a victim of a vicious attack, will be guest speaker at the monthly meeting of Area H27 Neighbourhood Watch, on Tuesday May 30.

All Kew residents are invited to attend the meeting which starts at 7.30 p.m. in Kew Library Complex Hall, off Cotham Road.

Area H001 Neighbourhood Watch group meet on May 1 in Kew Library Complex Hall, off Cotham Road, at 7.45 p.m. Enquiries: 25 7270.

For details about your local Neighbourhood Watch area please ring the Co-ordinator of "H" district, on the above number.

NEW COURSES FOCUS ON BUSINESS SKILLS

New short courses in computer, word processing and desktop publishing skills are a major feature of Methodist Ladies' College community education program.

Mrs. Pamela Wells, program co-ordinator, said the expansion in the number and variety of business skills courses on offer by the College, was in direct response to local interest.

She said MLC's business courses in the community education program attract tremendous interest from local companies wanting to retrain staff. Enrolments from women keen to return to the workforce are high because most lack modern office skills in word processing and computer technology.

Business skills are not the only area covered by the community education program. MLC also offers short courses in basic Japanese, Chinese, French, German, Greek and Italian as well as classes in art, craft, recreation and fitness.

Year 11 Maths A students can join a revision course and children in years six to nine can choose from classes in Maths enrichment and remedial Maths.

Enquiries about enrolment forms, bookings and the community education program should be directed to Mrs. Pamela Wells on 810 1333.

A Letter to the Editor

On March 22 I was fortunate to be treated to an historical bus tour of Kew, a thoughtful idea of the Kew Historical Society organised as part of Kew Festival.

Seated beside me was Judy Grice, one of the Society's staunchest members. Judy's conversation was not only enjoyable, but was the longest conversation I've had since becoming a Kew resident in mid-February.

From the pages of the March edition of Kewriosity, I observed that March was highlighted by a week-long Community Festival with a program only the indefatigable efforts of volunteers in the community could have planned and implemented.

I come from Kuala Lumpur (in Malaysia). I have come across a number of people in Kew who look like me and whom I have spoken to at the shops which they operate. I wonder if they participated in any of the Kew Festival's activities?

None beside me were on that bus tour, but perhaps a few were attracted to events on other days.

Why do I ask the question? "Kewriosity", but unlikely to be typical, I suppose.

I'm hoping I'll find the answer to this question and many others after a visit to Kew Community House.

Be you volunteers or other Kewites, fear not.

Charles Ng
Kew

SMALL GROUP SUPPORT FOR FAMILY CAREGIVERS

Family members caring for dependent elderly relatives often need care and support themselves.

A local project, funded by the Victorian Health Promotion Foundation, supports family caregivers in a series of nine small group sessions.

Topics covered included issues such as overcoming communication difficulties, understanding the ageing process, and understanding one's own grief.

Trained volunteer caregivers are available to look after dependent relatives while family caregivers attend the sessions.

The project, called "As People Grow Older", is conducted under the auspices of East Kew Uniting Church by project director and Minister at the Church, Reverend Doctor Noel Schultz.

Dates and prices for the May sessions of "As People Grow Older" may be obtained by contacting Doctor Schultz on 859 1206 or 890 4221.

FOOTY NEWS

Kew Football Club's new senior coach, Stephen Pirie, has warned players that the pressure of playing A grade amateur football will test them in this season's opening matches.

His comments came after a round of pre-season practice games when Kew won against Port Melbourne, Old Scotch and Diamond Creek, but lost to Echuca and North Old Boys.

New recruits showing good early form are Brett Fitzpatrick (ex-Port Melbourne forward), Peter Burke (ex-Richmond utility) and Dallas Moore (ex-Bendigo ruckman).

Under new coach, Bill Burke, Kew's Reserves had three good pre-season wins against Old Scotch, North Old Boys and Diamond Creek.

Reserve players rewarded with a run in the Seniors after showing good pre-season form, were Mick Peric, Rob Barry, Rob Bruno, Craig Bradley and Ashley Royston.

Footballers from Kew and surrounding suburbs — former country and interstate players — are welcome at the Club's Victoria Park headquarters.

Players of all ages and abilities can join the Club's three open-age Senior teams in graded amateur competition, or the five under 10 to under 18 junior teams.

Club Secretary, Ted Jenkins, can help with enquiries on 439 6059, or information can be obtained by ringing the Club pavilion on 817 1118.

Coming games: May 6 — Collegians (home); May 13 — Parkside (away); May 20 — Marcellin O.C. (home); May 27 — North Old Boys (away); June 3 — University Blues (Elsternwick Park).

For players, club members, supporters and their families, the Club arranges several social functions throughout the year.

Last month it held a sportsmen's evening when sporting broadcaster and radio personality Graeme (Smokey) Dawson, hosted a sports quiz. Footballing panellists Dermot Brereton and Tim Watson, cricketer Merv Hughes, and Australia II yachtsman, Brian Richardson, pitted their sporting knowledge against that of the audience.

KEW'S "EAGLES" NEED CARETAKER

A local soccer club with limited funds to spend on advertising, has appealed to Kewriosity for help in finding a new caretaker.

The Club, Kew Eagles Soccer Club, plays at Stradbroke Park, corner of Harp Road and Burke Road, East Kew.

One Saturday in each fortnight the Club needs a caretaker to run its pavilion, set up nets, mark grounds, prepare drinks, and wash jumpers after the game.

The caretaker would work between 11.30 a.m. and 5.30 p.m.; salary will be negotiated. Age is irrelevant, but the job would suit someone who can start immediately and who has a love for, or interest in, soccer.

Enquiries should be directed to Tony Cerasa, 882 5559 or Bruno, 429 4496.



NOT JUST FOR THE BOYS

If you glance around suburban football ovals on a Saturday afternoon, it seems obvious that footy's a game for the boys.

But look more closely and you'll see an increasing number of girls playing the game, especially at junior level.

In Kew, Hays Paddock Junior Football Clinic helps girls and boys learn football skills, develop their co-ordination, and have lots of fun at the same time.

Now in its ninth season, the Clinic caters for children aged five to twelve, from Kew, Hawthorn and surrounding suburbs.

Parents are welcome at the Clinic and can join in the activities if they wish.

Hays Paddock Football Clinic is held each Saturday during the season, from 8.30 a.m. to 10.30 a.m. Hays Paddock is off Kilby Road, East Kew.

A moderate seasonal fee is charged. This includes VFL insurance and registration.

For enquiries or to book, ring Max Berger, 898 1489, or Brian Fricke, 859 3693, after hours.

Time on your hands?

Bodalla Nursing Home in Barry Street needs volunteers to help feed frail, aged patients at lunchtimes and early evening. Training given. Enquiries: Di Jewell, Red Cross, 616 9999.



KEEPING YOU INFORMED

In two previous editions we have dealt with the origin of the Citizens' Advice Bureau movement in the United Kingdom, and its spread to Victoria in 1962. This final article briefly relates the story of our own Citizens' Advice Bureau in Kew.

The first move came at a meeting of Kew's Inter-Church Council in March 1971. The meeting called on the Mayor of the day to hold a public meeting to determine the degree of interest for a local Citizens' Advice Bureau.

Following a strong response, a committee was formed and the first twenty volunteers undertook a 15 week training course. With the help of other suburban bureaux, rooms provided by Kew Council were prepared and furnished in time for the Bureau's opening in February, 1972.

Since then, at the request of the Hawthorn City Council, a similar Bureau was launched in Hawthorn. It opened in 1976 and continues to operate in association with the Kew Bureau. The same group of volunteers service both bureaux.

If you need information on any subject, advice on legal matters, or the services of a qualified counsellor, just call at Kew Citizens' Advice Bureau between 10.00 a.m. and 3.00 p.m. on weekdays, or telephone 861 5244.

You will receive a friendly welcome and all services at the Bureau are free and confidential.