

# KEWRIOSITY

Municipal Offices, Charles St., Kew 3101  
Telephone 862 2466

December 88/January 89



Disabled athlete, Wayne Johnson (in wheelchair) practices Aikido on his colleague, Brian Gardam. Photo: courtesy Leader Newspapers

## COME AND TRY — RECREATION FOR ALL

**Have you often thought you'd like to try a certain sport or recreational activity but haven't been game enough or haven't got around to it?**

If so, you'll have your chance on Saturday December 10, at Genazzano College in Cotham Road, Kew, between 10 a.m. and 4 p.m.

Kew Recreation Integration Group have organised a 'Come and Try Day' — a day where people can experience new leisure and recreation options.

It's a day to join in the fun, have a go at something new, and meet new people from the local community.

You can try rock climbing, scuba diving, aquaerobics, aerobics, chess, croquet, live music, face and body painting, bike riding, judo, theatresports, marching girls, kite flying, or a host of other activities.

More than 20 groups will hold demonstrations and displays throughout the day and refreshments will be available.

Free parking is available but access to Genazzano College is from Cotham Road only.

Kew Recreation Integration Group Incorporated is a group of volunteers whose aim is to promote the positive integration of disabled people into recreational activities within the City of Kew.

The 'Come and Try Day' is designed to promote recreation and leisure options for everyone — able-bodied or disabled.

Further details can be obtained by ringing 859 3387.

## Household Garbage Collection

### A Reminder

All household rubbish should be placed in galvanised or PVC bins not more than 55 litres in size. Householders can use more than one bin.

Each bin must have a tightly fitting lid and should be left outside the property, or in the garbage corral if provided, by 5.30am on collection day.

Liquid wastes, slops, building materials, excreta and harmful substances likely to injure or harm a person, are definitely NOT ALLOWED.

Neither are chemicals, bottles, trade waste, garden waste, hard rubbish, or large quantities of newspaper.

Moist refuse, dust ashes, hair and small quantities of broken glass will be collected, but only if suitably wrapped.

Disposable nappies will only be collected if the faeces is removed and the nappies suitably wrapped.

During the festive break, household garbage collections remain the same as usual.

Council's staff, on 861 5148, will answer any queries about rubbish collection.

Glass bottles and jars and aluminium cans should be left for collection in the special bags provided by Council. These will be collected from 6am on the first garbage collection day of the week.

At Council's Recycling Centre at its Princess Street Depot (near Chandler Highway), residents can deposit glass bottles and jars, paper, and cardboard.

The Centre is open from 8am to 3pm weekdays and from 10am to 2pm on Saturdays and Sundays and on all public holidays except Good Friday, Christmas Day and Anzac Day.

## Rates reminder

**In a few days time, Kew ratepayers will be receiving their Rate Notices for the 1988/89 year.**

Ratepayers are reminded that the first municipal rate instalment is due on December 31, 1988.

Failure to pay the rate instalment by this date means that interest at the annual rate of 17.25 per cent will be charged from December 10, 1988 — the date the rates became due and payable.

The interest charge is a requirement of the Local Government Act.

Residents should note that the Municipal Offices will close on Friday, December 23 at 4.30 p.m. and will re-open on Wednesday, December 28 at 8.30 a.m.

The offices will close again on Friday, December 30 at 4.30 p.m. and re-open on Tuesday, January 3 at 8.30 a.m.

## Dates for December/January

3

Kew Lioness' Club caravan in High Street for sale of cakes and gifts for Christmas. From 9 a.m. until 1 p.m. Enquiries: Mrs Molnar, 819 1561.  
Kew Citizens' Band end-of-year concert at Kew High School Community Theatre, off High Street, at 8 p.m. Bookings: Ian Mathers, 878 3132.

4

Boroondara Bushwalkers barbecue in Alexandra Gardens at 6 p.m. for all members and their families. BYO everything. Christmas cake supplied. Enquiries: Thelma McManis, 817 5548.

5

Nursing Mothers' Association evening discussion on 'Weaning' at 2/19 Munro Street, Kew. Enquiries: 817 5721.

Kew/Balwyn branch of Country Women's Association shared luncheon at noon, before the last meeting of 1988. Members and new members welcome. At Uniting Church Hall, 142 Normanby Road, East Kew. Enquiries: Shirley Robinson, 819 1686.

7

Children's immunisation session at North Kew Maternal and Child Health Centre, 152 Peel Street, from 9 a.m. to 10.30 a.m. Enquiries: 861 9466.

8

Kew Garden Club Christmas Party at 8 p.m. at Senior Citizens' Centre, High Street.

10

"Come and Try" recreation day at Genazzano College from 10 a.m. to 4 p.m. Enter from Cotham Road only. Enquiries: 859 3387. Details elsewhere in this issue.

15

Nursing Mothers' Association afternoon tea at 20 Lofts Avenue, Kew, between 1.30 p.m. and 3.30 p.m. Enquiries: 817 5721.

16

Kew Christmas Card shop closes at 4 p.m. Last chance until then to buy your Christmas cards. See article elsewhere in this issue for opening times.

18

Family Fun Day at 3 p.m. in Alexandra Gardens followed by barbecue and Carols by Candlelight at 8.30 p.m. at the Bicentennial Band Rotunda.

21

Children's Immunisation session at East Kew Maternal and Child Health Centre, 21 Strathalbyn Street, from 9 a.m. to 10.30 a.m. Enquiries: 859 1380.

### JANUARY

18

Boroondara Bushwalkers meeting at 8 p.m. in Kew Library Complex Hall, off Cotham Road. Enquiries: Thelma McManis, 817 5548.

Nursing Mothers' Association picnic lunch for parents and their children at 97 Normanby Road, East Kew, at noon. BYO everything. Enquiries: 817 5721.

Children's Immunisation session at East Kew Maternal and Child Health Centre, 21 Strathalbyn Street, from 9 a.m. to 10.30 a.m.  
Measles/mumps between 9 a.m. and 10 a.m. only. Enquiries: 859 1380.

## Conservation study

**Almost 90 residents attended a special meeting of Kew Council's General Purposes Committee on November 21 to discuss the recommendations made in the Kew Conservation Study.**

The meeting, held in response to community concerns about the Study, was addressed by several residents who wanted to make their views known to Councillors.

Most of the views expressed were in line with opinions already made known by residents in other written submissions to Council.

They ranged from fears that properties singled out for their historical, architectural and landscape significance which would therefore be the subjects of special planning and building controls, could lose value, may not be able to be demolished, or may not be able to be developed in the way that the owners would wish.

Others expressed support for the introduction of conservation controls either in total or in part.

A significant number of residents do want to see the historical, architectural and landscape significance of Kew preserved through special planning and building controls and want to make sure that this is done in a clearly defined, fair and flexible planning policy which incorporates the right of appeal.

Owners of significant buildings against conservation controls say that the costs of repair and maintenance could be dramatically increased, there could be delays in planning and building permission which increase overall building costs and commercial buildings could be the subjects of unwarranted or unnecessary restrictions.

*Continued Page 7*

## Carols by Candlelight

**At the end of Australia's Bicentennial year, it is appropriate that Kew's popular Christmas celebration, *Carols by Candlelight*, is being held in the Bicentennial Rotunda in Alexandra Gardens.**

Organised by Kew Ministers' Fraternal, *Carols by Candlelight* starts at 8.30pm and follows the Family Fun Day and picnic being organised by Kew Bicentennial Committee (see page 4).

Kew's award-winning band, Kew Citizens' Band, will lead the carols and carol booklets and candles will be on sale. Proceeds benefit Kew High School Chaplaincy Fund.

Organisers hope for a fine night so people can sit on the grass, but advise residents to bring folding chairs, rugs and cushions for maximum comfort.

Kew Ministers' Fraternal invites everyone, especially the children, to join them at *Carols by Candlelight* and wishes everyone a happy and holy Christmas.

Details of Christmas services are listed opposite.

## Christmas Services

### Anglican

Kew: Holy Trinity, High Street, 24th Dec. — 11.30 p.m.; 25th Dec. — 8 a.m. and 10 a.m. St. Hilary's, John Street, 24th Dec. — 11 p.m.; 25th Dec. — 9 a.m., 10.30 a.m.

East Kew: St. Paul's, Windella Avenue, 24th Dec. — 11.30 p.m.; 25th Dec. — 8 a.m. and 10 a.m.

### Baptist

Kew: Highbury Grove, 25th Dec. — 9.30 a.m. (combined with the Uniting Church, Kew, in the Baptist Church).

East Kew: Woodlands Avenue, 25th Dec. — 9.30 a.m.

### Catholic

Kew: Sacred Heart, Cotham Road, 24th Dec. — 7.30 p.m. and 10 p.m. Mass in Dutch. 25th Dec. — 8 a.m., 9.30 a.m. and 11.00 a.m.

East Kew: St. Anne's, Beresford Street, 24th Dec. — 7.30 p.m. for young families; 25th Dec. — 10.30 a.m.

North Kew: St. Joachim's, Barnard Grove, 25th Dec. — 9 a.m.

### Church of Christ

East Kew: Valerie Street, 25th Dec. — 9 a.m.

### Uniting Church

Kew: Highbury Grove, 25th Dec. — 9.30 a.m. (combined with Kew Baptist in the Baptist Church).

East Kew: Normanby Road, 24th Dec. — 11.30 p.m.; 25th Dec. — 9 a.m. Hyde Park, Pakington Street (near Earl Street) 25th Dec. — 9 a.m. and 7.30 p.m.

# Commentary

**Christmas is a time for giving, and for us at the City of Kew, it is a time to publicly acknowledge the hundreds of people who give up their time for the benefit of all Kew residents.**

Towards the end of each year, usually in November, we hold a Mayoral reception for Kew volunteer organisations where we, as a Council, recognise those who do so much for others in our community.

This year more than 70 people from 30 Kew charities and service organisations accepted our invitation to join us so that we could pay tribute to the work that they do and the time they give to others.

None of these volunteers seek recognition for their work and, as a community, it is fitting that once a year, at least, we let them know that their services are not taken for granted. Their

help is acknowledged and their efforts are commended.

Kew's Community Directory lists a host of different clubs and organisations which need volunteers to keep them going.

Kewriosity has numerous articles throughout the year which call for voluntary help.

And the Citizens' Advice Bureau in the Kew Library Complex has lists of organisations which need your help.

If you know you will have some time to spare in 1989, or if you know you have a worthwhile skill to offer and want to do something for others in the Kew community, spare a thought for those 30 charities and others who could do with your help. What a rewarding New Year resolution such a decision would be!

After all, giving is the simplest pleasure in life. Giving is the true celebration of Christmas.



Cr. Allen Martin, Mayor of Kew

## MEETING DATES

**December 6** General Purposes Committee 7.30 p.m.  
**December 13** Council 8.15 p.m.

Meetings are held in the Committee Rooms and Council Chamber at the Municipal Offices in Charles Street and all are open to the public. Copies of agendas are available in the Kew Library prior to each meeting.

There are no committee or Council meetings scheduled for January. The next round of meetings will be advertised in the February edition of Kewriosity.

## Christmas Cards

**Kew Christmas Card Shop in the foyer of Ed Credit at 22 High Street, Kew, closes on December 16.**

Until then, the shop is open from Tuesday to Friday from 9.30 a.m. to 4 p.m. It is closed on Mondays.

The shop is organised and staffed by volunteers from the Kew auxiliaries of St. George's Hospital, Kew and the Eye and Ear Hospital, East Melbourne.

Proceeds from cards sold at the shop benefit both hospitals.

## Bus volunteers

**Kew Community Bus provides an invaluable method of transport for those who are less mobile but still need to get around Kew.**

The bus transports people to the Senior Citizens' Centre, Day Centres, shopping, appointments, banks and Kew Library.

Twice a month, on a Thursday, the bus needs a volunteer driver from 1.45 p.m. to 4.30 p.m.

Volunteer drivers need nothing more than a current driver's licence to drive the Toyota Hi-Ace van.

Joy Thomas or Wendy Rahaley will help with enquiries on 862 2466.



## Summer Holiday Awareness

**Co-ordinators of Kew's Neighbourhood Watch areas are urging residents not to relax their vigilance over the summer holiday period.**

They are concerned that during the Christmas, New Year and school holiday break, many homes left unattended are easy prey for burglars.

Added to this is their concern about the declining numbers of active Neighbourhood Watch members and the failure of many residents to attend regular monthly NHW area meetings.

One co-ordinator said "We only get a handful of people at our meetings now: compare that with the enthusiasm displayed by residents at our inaugural area meetings."

Police statistics reveal that crime has been reduced in areas where Neighbourhood Watch schemes have been introduced.

But those same statistics also show that once the schemes are found to be effective, residents are often lulled into a false sense of security, become less vigilant than they were, and develop a degree of complacency in relation to neighbourhood crime.

Since crime prevention is the responsibility of everyone — not just the Police — Neighbourhood Watch has supplied Kew residents with the following tips for the holiday break.

### What to Do Before Leaving Home Cancel

- Newspapers
- Milk
- Bread
- Postal Deliveries
- Other Regular Deliveries

### Arrange

- Valuables into Bank
- Pets — Kennels or Home Pet Minding Services or for neighbours to care for pets
- Neighbours or Friends
  - Provide them with your forwarding address and phone number, or that of a "contact"
  - water garden
  - lawns to be cut during absence
  - spare key to "contact", including alarm keys
  - pick up letters and junk mail
  - neighbours cars to be parked in driveway
  - rubbish bin to be taken in when emptied

### Suggest

- Don't talk of trips in public
- Advise police if away for any length of time
- Leave garden hoses at rear tap in case of fire
- Mark all property with driving licence number preceded by the letter "V"
- Photograph jewellery and valuables
- Notify alarm monitoring station and give instructions
- Notify insurance company in extended absence
- Notify Neighbourhood Watch zone leader

### House

- Arrange curtains and blinds in normal open and closed positions.
- Set telephone bell "low", so that strangers outside cannot hear the telephone ringing.
- Lock garage and shed doors (cover windows), lock away all tools and implements which could be used to gain entry.
- Check all taps are turned off, remove plugs from baths, sinks etc.
- Check contents of refrigerator and deep freezer, noting that should there be a power failure, food will deteriorate.
- Turn off lights, electrical and gas appliances, and power points (TV, electric blankets, radio, washing machine, radiators, space heaters, other heating systems, and hot water service).
- Security lock all house windows and doors.
- Lock cars in garage and leave key with "contact".
- Padlock manhole covers.
- Set burglar alarms, light timing switches, check light bulbs etc.
- Place indoor plants in kitchen sink and leave bowl of water alongside for humidifying.
- Adjust pool time clock for filter, and arrange chlorination.
- Ensure house and surrounds look as normal as possible.

Do keep this checklist handy, take extra care on the roads, and have a safe, relaxing holiday.

# Christmas Celebrations at Cotham Village

**Traders at Cotham Village Shopping Centre — on Cotham and Glenferrie Roads — have joined together to organise some activities for local shoppers in the lead-up to Christmas.**

Children up to 12 years can enter a coloring competition and have the pleasure of seeing their work displayed in the local shops.

The competition which starts on December 1 is divided into two sections: Section 1 for children up to six years and Section 2 for children from seven to 12 years.

Father Christmas will announce the winners' names on Friday, December 23 at 2 p.m. and, at the same time, will draw the winner of the Cotham Village Christmas stocking.

Tickets for the stocking will be given free-of-charge to all local shoppers from December 1.

The contents have been donated by local traders in their efforts to engender some Christmas-spirit within their local community.

## Teenage holiday program

**Kew's Teenage Holiday Program, run in conjunction with Hawthorn Council, is planned for the last two weeks of the school holidays in January.**

11-14 year olds can choose from four daily outings during the two-week period — horseriding, motor bike riding, beach trips, and outings the students select for themselves.

Organisers of the 15's and over program are hoping to run two camps — one at Torquay with a skateboarding focus and the other a river or beach camp.

Students will also be able to choose between beach trips, motorbike riding and horseriding, held on two days each over the two-week period.

Bookings for all teenage program activities will be taken before the program starts and details are being circulated shortly to all local schools.

Parents, students and teachers with enquiries about the programs can ring Maureen McLaughlin in 860 5221 or 861 6828, or 'Wil' Wilson on 819 4295.

Kew's Youth Resource Centre at 10-12 Derby Street, will be open on Thursday evenings throughout the holidays from 4 p.m. to 8.30 p.m.

The Centre currently needs donations of tools suitable for working on engines and is looking for volunteers to share their skills with young people who are keen to learn.

The Centre would like volunteers who can give up their Thursday afternoons to teach woodwork, pottery, screen printing, the use of personal computers, how to play guitar, or any other skill you think would interest young people.

## Kew Lions' News



*Lions' District Governor, Ken Western (centre) pictured with Lyn Bell (left) and Noel Tatchell (right) on the steps of Victoria's Parliament House.*

**Kew Lions' and Lionesses celebrated Lions' World Service Day on October 8 by participating in a march from the steps of Parliament House to the Bourke Street Mall.**

Both clubs have wound up the year with busy fundraising schedules. The Lions' held a sausage sizzle to feed the 'hungry hordes' who participated in St Paul's School for the Blind 'Light for Sight' Walkathon in October, and the Lionesses raised money for the Asthma Foundation at their recent Art Show.

Kew Lionesses' Club will hold its final fundraising function for the year on December 3. Between 9 am and 1 pm in the Lions'

Caravan in High Street, opposite the Post Office, Lionesses will be selling cakes and gifts for Christmas.

Both Lions' and Lionesses will participate in Kew Recreation Integration Group's 'Come and Try Day' at Genazzano College on December 10 and will wind up their year with an Annual Dinner for members on December 12.

Women interested in joining Kew Lionesses' Club should contact Mrs Prue Molnar on 819 1561.

Men interested in joining Kew Lions' can contact Robert Ford on 850 7970.

## MUSIC BOOKINGS

**Bookings for 'Music in the Round', Melbourne's favourite chamber music festival, open on December 1 through all Bass outlets.**

The festival is being held on April 22 and 23, 1989 at Methodist Ladies' College, Barkers Road, Kew.

Ticket prices are \$15 and \$10 concession.

Young people who need help or information about accommodation, getting a job, financial assistance, hassles at home, relationships, or anything else they are concerned about, can get advice from the Centre.

During term time it is open on Tuesdays between 4 p.m. and 7 p.m. for 11-14 year olds. Activities include drama, sports, video games etc.

On Thursdays between 4 p.m. and 8.30 p.m., 15's and over can drop-in for coffee and a chat, music, table tennis, billiards or video games.

Once a fortnight, on a Sunday evening between 5 p.m. and 8.30 p.m., the Centre has an open-age drop-in session and organises occasional outings.

Maureen McLaughlin, Youth Services Development Officer for the Centre, can help with enquiries on 860 5221 or 862 2466.

## 'SENIOR' EXHIBITORS WANTED

**As people get older their talents for creative arts and crafts don't disappear or diminish.**

Instead, older people often find they've got more time to devote to art and craft activities than they did when they were younger. And their interest is often keener, too.

During Senior Citizens' Week each year, Kew's older residents display their talents in an exhibition of their art and handcraft.

Organisers of the 1989 exhibition would like to hear from local artists and craftspeople who want to contribute their works.

The exhibition, from Monday, February 27 to Friday, March 3, will be mounted at the Senior Citizens' Centre on the corner of High and Childers Streets, Kew. It will be open from 10 a.m. to 3.30 p.m.

On some afternoons during the exhibition, organisers hope to include artists demonstrating their skills.

Keith Williams on 862 2011, Ext. 51, or Barbara Moran on 846 2986, can help with enquiries.

# Bicentennial Christmas Celebrations

**Kew Bicentennial Committee is planning a day and evening of family activities on Sunday, December 18, to round off Kew's contributions to Australia's Bicentennial year.**

A 'Family Fun Day', starting at 3 p.m. in Alexandra Gardens, features tent displays of Bicentenary activities undertaken by Kew schools throughout the year.

The Bicentennial Band Rotunda will be used for musical performances by school children and a stage will be provided for them to perform their plays and pageants.

During the afternoon the Bicentennial Committee will hang the Kew Historical Tapestry in the Municipal Library.

The tapestry, designed by artist and former Kew resident Joy Stewart, has been painstakingly worked over the past six months by hundreds of Kew residents.

It depicts the history of Kew and is Kew's lasting contribution to Australia's Bicentenary.

The Committee will also place Kew's Time Capsule in the wall of the Council Chamber. The capsule, which contains records of some of the activities of community groups, will be opened in 100 years time.

The 'Family Fun Day' and Bicentennial activities will be followed by a family barbecue and colonial dancing which precede Carols by Candlelight at the Alexandra Gardens Bicentennial Rotunda at 8.30 p.m. (see page 2).

Kew Bicentennial Committee invites all Kew families to join in on Sunday December 18 for a truly memorable end to Australia's Bicentennial year.

## New Directory for Families with Children

**A new Family and Children's Services Directory produced by Kew Council's Community Services Department, and funded by Council, will be available to Kew families shortly.**

The directory provides families with comprehensive information about the services and support networks available to them in Kew and surrounding suburbs.

The directory will be distributed through Council kindergartens, Maternal and Child Health Centres, Kew Occasional Care Centre, Kew Library and the Municipal Offices.

It will also be available from community and private child care centres, playgroups, and Kew Toy Library.

Copies are restricted at the moment to one per family for Kew families with children up to five years.

New mothers will receive a copy from their Maternal and Child Health Nurse on her first visit to them.

Enquiries about the directory can be directed to Elizabeth Sullivan, Children's Services Officer, on 860 5221.



Senior Constable Robin Kristoff from Camberwell Police seen here 'arresting' the light-fingered pedlar, the not-so-very-wicked witch and the cow from 'Jack and the Beanstalk'.

## BICENTENNIAL BEANSTALK — AND JACK

**The Hartwell players are rounding off a very successful year with their Bicentennial production of 'Jack and the Beanstalk'.**

Written by local playwright and composer, Ric McInerney, the pantomime is a big, bright, colourful, all-singing, all-dancing Australian version of this well-loved favourite.

Jack is played in the traditional manner by a girl, and his mother, by tradition, a man; there's a not-so-very-wicked witch, a petulant, babyish giant who is always looking for something to eat — preferably Jack — and a chook who lays golden eggs.

Of course the cow, the harp and the weasel-faced pedlar, seen here being arrested by the local constabulary, all play their part in this popular story.

Jack and the Beanstalk is being staged in the Hartwell Uniting Church Hall on the corner of Eddy Street and Halley Avenue, Hartwell.

Performances are at 2pm on December 4, 10, 11 and 17 and at 8pm on December 1, 2, 3, 9, 10, 15, 16 and 17.

Tickets are \$6 for adults and \$3 for students and pensioners. Family and group discounts are available.

Patrons can stay behind, meet the cast and crew and join in a hearty supper at a Gala Supper Night on Saturday, December 10, at 8pm. Tickets are \$10 and \$7.

Contact Mrs Miller on 211 5297 for all enquiries and bookings.

The Hartwell Players is one of Melbourne's longest established theatre groups and this year, celebrated its 50th anniversary. The group has several members who live in Kew and a good following of Kew residents.

Its production of 'Jack and the Beanstalk', which is part of Camberwell's Bicentenary Celebrations, is sponsored by the Camberwell Bicentenary Committee and Camberwell Council who are underwriters for the project.

## Mature age students find TAFE supportive

**People of any age who have not completed a Year 12 course of study and want to further their education, should consider taking their Victorian Certificate of Education (VCE) at a local TAFE college.**

For mature age students, a TAFE college is much less threatening than a secondary school because of the number of students of all ages on campus.

In the TAFE system, a 'mature age' student is someone who has been out of school for at least one year and is someone who is aged over 18 and under 100!

Paul Gibson, lecturer in social sciences and humanities at Swinburne College of TAFE,

Kew's closest tertiary institution, says mature age students undertake VCE courses at the college for a variety of reasons.

"The obvious one is that they don't feel they're unusual because of their age. There isn't really an average age for students who do the VCE: we have a mixture of students. Some are people who are 18 and left school only last year and others haven't been to school for years."

"Most mature age students are a bit nervous about returning to study, but when they see others in the same situation, it makes them very supportive of each other."

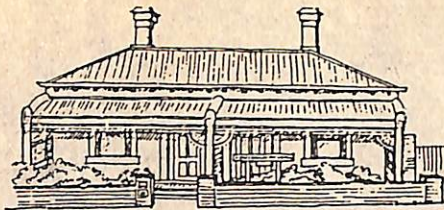
As well as VCE subjects, Swinburne offers preparatory and refresher classes for students who need help with English and Maths. Classes in study techniques are available for students returning to study.

Mr Gibson said flexible timetables combining day and evening classes have been designed to help students who also have to work and they mean a variety of options for mature age students.

For information about VCE, TOP and HSC courses at Swinburne, ring the Information Office on 819 8444.

## KEW COMMUNITY HOUSE

Co-ordinator: Judy Price



6 DERBY STREET, KEW, VIC. 3101  
Telephone: 862 3126

**Last month we had our Annual General Meeting at our House and, reflecting on 1988 for that meeting, a number of pictures crossed my mind. Here are a few.**

For an organisation like ours, there must always be 'downs' as well as 'ups'. Downs such as the disappointment at umpteen cheese cakes left over after a not-so-successful fundraising day at Kew Community Festival. And ups which more than compensate for such disappointments — like a fabulous fundraising lunch for 60 people which bought us a new microwave.

There have been many things that have made me smile during the year.

Dedicated voluntary tutors arriving, enthusiastically, with boxes of materials ready to teach their particular skill and the satisfaction on the faces of their 'students' proudly showing me what they have made.

The delight at finding that Kew Recreation Integration Group and Family Day Care want to work in and be part of our House and want to share all our experiences together week-by-week.

My occasional visits to Wednesday's Drop-In Day and not being able to hear myself think because of the number of interesting, animated and noisy conversations.

The happiness on the faces of four people from Kew Cottages who had baked, filled and decorated a 'Black Forest' cake in our kitchen and then triumphantly offered us a piece to eat with them.

And seeing the House changing before my very eyes with less and less need to rely on classes and more and more groups, like the Nursing Mothers' Playgroup, who find the House a perfect place for them to meet.

There have been a few things which have made me lose that smile, too.

Things like having to cancel a class because not enough people applied to join it and mentally questioning whether we were 'barking up the wrong tree' with some of the classes we'd organised.

None of the ups and downs could happen at all without a dedicated band of volunteers who run our House and I am grateful to them all: particularly my office volunteers who handle all that happens while I am not here and the Community House Committee who struggle to finish each meeting by 9.30 p.m. and never do because there are so many facets of a Community House which they have to consider.

By the time you read this, we will be close to finishing our regular program for the year.

But we will re-open in mid-January and we hope you will drop-in for a cup of coffee and a chat.

Next year we hope to bring you some exciting and different programs and in the meantime, we wish you a safe and Happy Christmas and holiday period.

We look forward to seeing you at our House in 1989.

Parents of special needs children should contact Joanne Thodis at the Municipal Offices on 860 5218, as soon as possible, so that she can cater for them.

Joanne can also answer questions about prices and concessions for families with more than one child or families eligible for special consideration.

For a fee of only \$1.60 per child, parents can take their children to Kew Traffic School in Cotham Road.

Open from January 3 to January 27 between 10 a.m. and 3 p.m., the School will be used as a drop-in centre where children can come and go as they please.

As no supervision and no catering is provided, parents must stay with their children at all times and can take a BYO lunch to picnic in the new Gazebo.

Some bikes will be available for those children unable to bring their own and the "Life. Be In It" games trailer will operate daily.

A detailed brochure on Kew's School Holiday Program can be collected from the Municipal Offices, Charles Street.

Telephone enquiries should be directed to Joanne Thodis on 860 5218 or, during the holidays, to Michelle Bourke on 862 3781.

Details of the Teenage Holiday Program appear elsewhere in this issue.

## 25 years for local CWA

**Kew/Balwyn branch of the Country Women's Association last month celebrated their Silver Jubilee.**

The branch, formed in 1963, still has four active foundation members, all of whom were at a special luncheon on November 7 to mark the occasion.

Club President, Mrs B. Loft, welcomed Mrs B. Burgess from the CWA Executive; Mrs B. Mitchell, Fraser Group president; Miss B. Kidd, group secretary; guests from other Fraser Group branches, and Kew/Balwyn branch members.

After the luncheon the minutes of the inaugural meeting were read and a beautifully decorated cake was cut. Guests and members were then entertained by the Pocket Theatre Group.

The Country Women's Association, a non-party political, non-sectarian service association, was formed in 1928.

New members are always welcome and should contact branch secretary, Shirley Robinson, on 819 1686, for details.

## BOWLS NOTES

**Kew Ladies' Bowls team recently reached the final eight in competition for the premier ladies bowls event, the Helan Bridford Shield.**

Glad Pendry, Betty Osmond and Margaret Rankin were skippered in their success by Grace Pagram.

Women who would like to join the social, happy atmosphere of Kew Bowling Club should contact Lorna Marks on 861 9650 or 818 4153.

## Children's Holiday Programs

**The summer school holiday break can seem like an eternity to bored primary schoolers — not to mention mums and dads who are trying to amuse them.**

Kew Council's holiday program might be the answer.

From Tuesday, January 3 to Wednesday, February 1 — between 10 a.m. and 4 p.m. — children can join in a wide range of art and craft and sporting activities, daily swimming, and exciting excursions to the zoo, rollerskating, trout fishing and other local attractions.

For working parents, fully supervised day care is available between 8 a.m. and 6 p.m.

Children participating in the program need only enrol at each session they attend and should take BYO lunch, bathers and towel with them.

Kew Council encourages special needs children to participate in its integrated holiday programs, but special arrangements often need to be made.

## MUSICAL COMEDY PLAYERS WANTED

**Viola Musical Comedy Society which rehearses at St. Hilary's Church, John Street, Kew, is looking for new players.**

Buoyed by the October success of its production of Franz Lehar's "Gipsy Love," the Society plans to stage its next Lehar operetta "The Count of Luxembourg," in May next year.

The Society's production of "The Count of Luxembourg" is timely, as almost 70 years after its premiere in Vienna, Sadlers Wells Opera Company recently revived the production in London.

Singers, dancers, and musicians are all needed for the production and newcomers to the Society will receive a very friendly welcome.

Rehearsals will be at St. Hilary's, Kew, for one night per week, commencing in the New Year.

Details of the production and the modest membership fee of the Viola Musical Comedy Society, can be obtained from David Keane on 383 1486.

## Long History for Local Bank

**The National Australia Bank at 185 High Street, Kew, is deeply conscious of its heritage and is proud of its place in the history of Kew.**

The bank, on the corner of Walpole and High Streets, is a dignified, imposing building which, after 103 years, is still serving the needs of the people of Kew.

The bank opened its doors as the National Bank of Australasia in August, 1885, just 82 years after Kew was first sighted by Acting Surveyor Grimes.

The first branch, at 87 High Street, was managed by Mr. T. E. Ochiltree J.P. But by 1891, new premises were built at 185 High Street where the present building still stands.

One of the new bank's managers was Mr. H.C. Davis, a noted athlete and champion hurdler.

He was succeeded, in 1908, by Hugh Trumble, an Australian Test Cricketer who later resigned from the bank to become Secretary of the Melbourne Cricket Club — a job he held for 27 years.

Carl Sherman, the present branch manager, said his branch is proud that many of its records have been preserved intact.

As well as information on some of its staff, the bank still has its first ledger showing that William Woodard, a boot manufacturer of Bulleen Road (now High Street) opened the first account.

Other early customers were store-keepers, blacksmiths, bakers and dairy farmers.



In 1977, the Bank donated to the Kew Historical Society, two of the first signature books used by the Kew Branch.

The books, which date from 1885, contain the names and occupations of the Bank's customers from 1885 to 1922.

The present National Australia Bank is built on the foundation of two of Australia's oldest banks — The Commercial Banking Company of Sydney founded in 1834, and the National Bank of Australasia Limited founded in 1858.

The original fortunes of the Commercial Banking Company of Sydney came from extensive pastoral expansion in Australia in the 1830s and 40s, and the National Bank of Australasia based its fortunes on the Victorian goldrushes of the 1850s.

*The National Australia Bank building at 185 High Street, Kew. Built 1891.*

*Photograph: Courtesy Archives Department, National Australia Bank Limited*

Today, the National Australia Bank boasts a network of 2,000 offices and branches, representation in 16 countries, and more than 34,000 employees, yet it still has a strong sense of belonging in Kew.

This article is the last in our series of Bicentenary articles on Kew. It was prepared by Olwyn Eaton, Council's Information Officer, from material supplied by the Marketing Services Department of the National Australia Bank at 271 Collins Street, Melbourne.

## Special Camps for Young Asthmatics

**Many young asthmatics have never been allowed to experience the joys of camping and other sporting activities.**

Over-protection by parents, teachers or activity leaders is probably to blame, but many young asthmatics never express an interest in such activities because, secretly, they are scared.

They often don't know they can enjoy a wide range of indoor and outdoor activities in the reassuringly safe environment of the Asthma Foundation's Camping and Recreation Program.

The program includes a wide range of summer and winter activities at a cost which most families can reasonably afford.

From December 12 to 16, children 8 to 12 years old can enjoy a tennis camp at Mount Eliza.

In January there are two adventure camps at a farm near Mansfield in Victoria — From

January 7-12 for 10-12 year olds and from January 21-26 for 13-16 year olds.

Trained volunteer leaders and qualified medical staff supervise all programs and their presence means that any emergency can be dealt with immediately.

Children and teenage asthmatics are encouraged to understand their own treatment programs and to start accepting responsibility for their own self-management and lifestyle.

Medical staff monitor the management of each prescribed program and offer guidance to the child where necessary.

Sally Keegan, organiser of the Camping and Recreation Program, says children who have attended the Foundation's camps have been relieved to find they can play sport and enjoy outdoor activities like everybody else.

Parents too have often been surprised at the growth in their child's confidence and understanding of asthma once they've attended a camp. And they're often surprised by the child's increased physical proficiency as well.

Bookings for all camps are being taken now and enquiries should be directed to Sally Keegan on 861 5666.

## CONSERVATION STUDY

*Continued from page 2*

Others are concerned that expensive or difficult to obtain materials could increase renovation costs, that delays and disagreements about the form of developments or degree of restoration could increase costs and that individual owners will bear all costs for the benefit of the whole community.

Some owners thought Council staff were no better placed to make informed decisions — despite their training and expertise — than themselves, that their freedom to do with their property as they wished was continually being eroded and that more controls could bring more inflexibility in bureaucratic decision making.

In view of these concerns, and because Council is not satisfied that residents have been given adequate opportunity to understand the implications of the Study recommendations, Council has decided to broaden its discussions with the community.

A public forum will be held late in February and Council's information program will continue through a second approach to residents and through Kewriosity.

Council has deferred further consideration of the Conservation Study recommendations until its consultative processes have been finalised.



## Keeping you informed

**The year just passed has been a busy one for Kew Citizens' Advice Bureau. One which has seen the nature and volume of enquiries so often reflect changing social and economic conditions in our community.**

Our busy volunteers now intend to share in a well-earned holiday break and our Bureau hours will be reduced from Christmas until the end of January.

Kew and Hawthorn Citizens' Advice Bureaux work in partnership and will provide full week-day services from now until December 23, but will close from then until January 2.

Between them the Bureaux will provide a continuous service from Monday, January 2 until Tuesday, January 31, when normal services resume.

Kew Citizens' Advice Bureaux will close on December 23 and re-open on January 3 when it will provide a week-day service between 10 a.m. and 1 p.m. until Friday, January 13.

Hawthorn Citizens' Advice Bureau will close on December 23 and re-open on Monday, January 16.

From that date until January 31, the Bureau will open from 10 a.m. to 1 p.m. and will operate on alternate week days: Hawthorn on Mondays, Wednesdays and Fridays and Kew on Tuesdays and Thursdays.

From January 31 the Bureaux will resume normal hours — Monday to Friday from 10 a.m. to 3 p.m. — and full services including the free legal service which is in recess from December 31 to January 30.

Volunteers at the Bureaux extend good wishes to all their friends and a promise of helpful advice in the coming year.

Kew Citizens' Advice Bureau is in the Kew Library Complex, off Cotham Road, with access from the Library or a ramp at the rear of the building.

Hawthorn Citizens' Advice Bureau is in the RSL Building on the corner of Glenferrie and Manningtree Roads, Hawthorn.

You can ring Kew CAB on 861 5244 or Hawthorn on 819 2722.

# Music for Children

**There are several Kew groups which cater for children who like music and movement.**

One group, for five to seven year-olds, has been operating after school for several months now, and in 1989 would like to expand its membership.

Betty Frey-Taylor, a music and movement teacher who runs the group, teaches by the Kodaly-Orff method — a method which includes beat, rhythm, pitch, movement, singing, musical games and instrumental experiences.

Betty is now taking enrolments for this group and for her pre-school music and movement classes which begin mid-February.

You can contact her on 817 3044 for details and prices.

## Better Access to Gardens for Disabled

**From March next year, disabled people will have better access to Alexandra Gardens and its facilities under a plan just approved by Kew Council.**

The plan, a Bicentenary Project of Kew Rotary Club, was developed in conjunction with the Department of Sport and Recreation's working party on outdoor access for all, the Ministry for Planning and Environment's urban design team, Kew Recreation Integration Group and Council staff.

Designs for the changes include better access to the gardens via a new path from the Kew Library car park, the installation of handrails at the northern entrance to allow wheel chair access and wider pathways which will accommodate benches and rubbish receptacles more suitable for use by disabled people.

Access to the newly constructed Bicentennial Rotunda will be gained via a newly constructed path and forecourt area and barbecues will be rebuilt to provide full access for everyone.

New seats and tables will be built, a handrail installed on the bridge over the pond and a new stone wall built around it.

There will be new drinking fountains, improved signing and scented planting areas included. Pram crossings will give access to the lawns, and the toddlers play area will be rebuilt.

An information pamphlet outlining the plans is being prepared by the Rotary Club of Kew and the Ministry for Planning and Environment, and will be available soon.

The project is being funded jointly by Kew Rotary Club and the Department of Sport and Recreation.

Work on the project will start late this year and should be completed by March next year.

Enquiries about the project can be made by ringing Council's Engineering Department on 862 2466.

# Kew Festival

**Kew Festival Committee is busy planning Kew's Community Festival for 1989.**

The Committee wants to hear from community groups and organisations who would like a stall or tent in the Alexandra Gardens on Festival Day, Saturday, March 18.

Bookings for available stalls and tents are filling fast so organisers of activities are being advised to fill in the coupon reproduced below and return it, immediately, to avoid disappointment.

Coupons can be lodged at the Municipal Offices in Charles Street, or can be sent to the Kew Community Festival Committee, c/- P.O. Box 42, Kew, 3101.

Enquiries about the Festival can be directed to Alan Chung, Council's Administrative Officer, on 860 5202.

### COUPON

Name of organisation: .....

Contact person: .....

Address: (for correspondence) .....

Phone: (w) .....

(h) .....

Brief details of activities planned: .....

Please tick if you need: Trestle table

Power

Tent

Fee for tent hire (paid to the Scouts) is \$10. The number of tents is limited, though, and the committee cannot guarantee one.

## DEADLINE

**Kewriosity is produced by the Information Officer, Olwyn Eaton, and a community-based Editorial Committee.**

This is the last edition for 1988. Copy for the February edition should reach the Municipal Offices by Monday, January 9, 1989. Contributors should keep in mind that the March edition is given over, almost entirely, to the Kew Festival Program.