

KEWRIOSITY

Municipal Offices, Charles St., Kew 3101
Telephone 862 2466

April 1988

New ward boundaries for Kew

Plans for the re-subdivision of Kew's ward boundaries have, after months of negotiation, been accepted by the Minister for Local Government, Jim Simmonds.

The changes will mean a reduction in the number of councillors from 15 to 12 and a reduction in the number of wards from five to four.

In October 1986, Council decided to have a ward boundary review to investigate the variation in the distribution of voters between electoral subdivisions.

The following month Kew — in common with most other councils — was asked by the Minister to review its ward boundaries and to correct any imbalance in voter distribution.

The Minister's request was based on the principle of one vote, one value.

Kew is one of the few metropolitan municipalities with five wards and fifteen councillors. Most councils have three or four wards and nine or 12 councillors.

When Council reviewed its boundaries, it originally recommended to the Minister that slight changes to Studley Park and North Ward boundaries would achieve more equitable electoral representation without changing the number of wards and councillors.

Council's recommendation was based on the view, that in Kew, more comprehensive and higher quality representation was available to residents because of the number of councillors.

Mr Simmonds, while he shared this view, repeated his request for a reduction in the number of wards and councillors and suggested a three ward, nine councillor arrangement.

Council, however, disagreed. It believes that the form of representation and the style of government is critical to the adequate expression of community opinion. It felt that the lesser number of wards and greater number of constituents per councillor would mean that residents would be inadequately served.

The Minister, acknowledging that the government wanted to achieve a spread of electoral representation which was not only effective but consistent with the principle of local choice, finally compromised with Council and accepted a four ward, 12 councillor arrangement.

Mr Simmonds, when he accepted Council's proposal, agreed that the arrangement was "the most acceptable solution to the current imbalance".

The ward boundary changes and the reduction in the number of councillors will take effect at the next Council elections on August 6 this year.

The changes mean that all councillors will go out of office at the next elections. All sitting councillors will be able to stand for office again on August 6.

The new ward boundaries have been decided on but the four new wards have yet to be named.

The new wards have been allocated under the conditions laid down in the Local Government Act which stipulates that the number of voters in each subdivision must, wherever possible, not vary by more than five percent from the average number of voters for all the subdivisions.

Community recreation

Second term community recreation programs get underway between April 11 and 15.

Water exercises and swimming classes are designed to improve water confidence, swimming skills and breathing, while relaxation exercises in the water help joint mobility.

Water playgroup helps children and parents gain water confidence and gentle exercises to music improve fitness and flexibility.

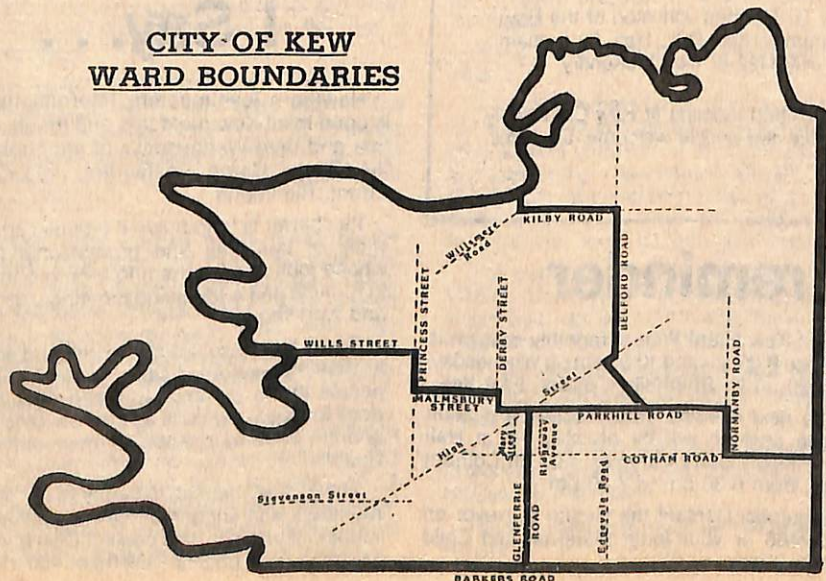
There's also tennis for fun where you can improve your game and meet new people. Classes are open to residents of all ages and abilities.

Fees for all classes are \$30 per term and \$25 concession.

For more information or to book, ring Donna Morton on 862 2466.



CITY OF KEW
WARD BOUNDARIES



Cab reminder

We want to remind our residents that the Kew Citizens' Advice Bureau is now behind the Kew Library. You can enter either from inside the Library or from the rear entrance at the back of the Library building.

There is a wheelchair access there, too.

All our services are free and confidential. They include community information; professional counselling for individuals, couples and families; and a legal service one evening per week.

Call in from 10 am to 3 pm Monday to Friday or ring 861 5244 during opening hours.

Dates for April

- 5-9** Vacation Bible School for boys and girls. Activities such as games, painting, films and handcraft, competitions, quizzes, story sessions, prizes, singing and great fun, at East Kew Baptist Church, Woodlands Avenue, Kew. Details from Frank on 859 3751 or Con on 848 3585.
- 11** Kew Community Action Group meets at Kew Community House, 6 Derby Street, at 8.00 pm. All welcome. Details: Rhonda McCaw 817 2940.
Breast cancer and breast self-examination is the subject for discussion by Kew Nursing Mothers' meeting at 47 Spruzen Avenue, East Kew, at 8 pm. Leading the topic is guest speaker from Box Hill Community Health Unit. Details: 861 9665 or 817 5721.
- 12** Inspector Ian Galt from the Police Air Wing, will speak to area H66 and area H28 residents about how Helicopter Police work, at the combined meeting for those areas at 7.45 pm in Hall no. 3. of the Kew Library complex. All welcome.
- 13** Hyde Park Fellowship monthly meeting at 1.30 pm with Guest speaker, Daphne Arthur, from the World Council of Churches. Details: Mrs McMillan, 861 9243.
Kew Historical Society meets 8.00pm in the Auxiliary Room behind the Municipal Offices — temporary venue only. Guest speaker is Mr Batson whose subject is Trinity Grammar — a history.
Boroondara Bushwalkers Annual General Meeting at 8 pm, Hall no.3, Kew Library complex. Send agenda items to Secretary, one week before, please Members.
- 14** Maurice Stratton is showing films of 'Beautiful Gardens' at the Kew Garden Club meeting in the Senior Citizens' Centre at 8 pm. All interested people welcome.
- 17** Missionary Sisters of St Peter Claver annual Mission Concert at Sacred Heart Parish Hall, 116 Cotham Road, at 2.30 pm. Admission Free. Varied program includes Genazzano Choir, Indian dancing, Irish ballet.
Tea Dance in aid of Lioness Community Projects at Vasey House, Lisson Grove, Hawthorn. Tickets \$10 each from Kew Lioness Club, Mrs Joyce, 859 2758. Display of paintings and pottery also on sale.
- 18** Royal Victorian Eye and Ear Hospital Kew Ladies'; Auxiliary meeting in Hall no. 3, Kew Library complex at 1.30 pm. New members welcome. Enquiries: 817 4671.
- 20** Kew Legacy Widows' Club meets RSL Hall, 63 Cotham Road, at 11 am. Enquiries: 859 2097 or 817 5097.
Kew Community Walk leaves from Kew Community House, 6 Derby Street, promptly at 1 pm. Cost \$1. Community Bus takes you to Heidelberg and Camberwell for mystery walk.
Kew Arthritis Self-Help Group monthly meeting in Hall no. 3., Kew Library complex, at 10.30 am. Guest speaker on Market Research. Visitors welcome. Morning tea served. Enquiries: 862 2021 or 836 8794.
- 21** Nursing Mothers' coffee morning at 36 Young Street 10 am to noon. Babies and toddlers welcome. Enquiries: 861 9665 or 817 5721.
- 24** Kew Probus Club will be addressed by Dr Norman Johnston of the Boy Scouts movement at its meeting at 10 am at Kew RSL, Hall, 63 Cotham Road, Kew. Enquiries: Charles Hoare, 818 4122 or Don McKendry, 859 2630.
- 25** Kew Emergency Housing Steering Committee meeting at Kew Community House, 6 Derby Street, at 8.00 pm. Interested people welcome. Enquiries to Rhonda McCaw, 817 2940.

Immunisation reminder

Our school immunisation program starts on April 18 and finishes on April 22.

Absentees will be immunised at a special session organised by the school, so please contact your child's Principal if your child is away on the immunisation day.

North Kew Infant Welfare monthly session is between 9.00 am and 10.30 am on Wednesday, April 6, at 152 Peel Street, Kew.

East Kew Infant Welfare monthly session is between 9.00 am and 10.30 am on Wednesday, April 20, at 21 Strathalbyn Street, East Kew.

The next evening immunisation and adult rubella session will be on May 17, in Hall no. 3, Kew Library complex, just off Cotham Road, from 6.30 pm to 7.30 pm.

Enquiries: Contact the Health Surveyor on 862 2466 or your local Maternal and Child Health Sister.

News from the friends



The Friends of Kew Library have an innovative idea. They're writing and publishing regular book reviews for borrowers at Kew Library.

Copies are available at the circulation desk at the Library and feature reviews of some of the books recently added to the Library's collection.

Alex Tarr, Kew's Librarian, said "The reviews are a great idea. They're enjoyable and informative and they add an extra dimension to borrowers when they're selecting their books."

If you think you would enjoy the fellowship and stimulation in all things literary, and at the same time help Kew Library, why not join the friends?

The joining fee is inexpensive and think of the friends you'll make and the fun you'll have.

Ask for information at the circulation desk or ring Eric Flynn on 859 6415.

I Say, I Say, I Say...

Hawthorn Toastmasters' International Club is open to all Kew residents and meets on the first and third Wednesdays of each month at the Gypsy Baron Restaurant, 433 Church Street, Richmond.

Its charter is to improve the public speaking skills of business and professional people whose jobs require them to be more involved in running and addressing meetings, seminars and workshops.

Diane Hall, the Club's publicist and editor of its monthly newsletter, said, "We find that many people in the community these days have a need for speaking skills as they become office-bearers of various clubs, or even enter local Council."

Diane said the club is happy to accept new members and suggests that if you would like further information, you contact Club president, Malcolm Faul, on 862 1369 (h) or 480 1122 (w).

Commentary

In this edition, I thought I would give due prominence to the powerline debate since it has received considerably more media attention of late and since I have agreed to chair a very important public meeting on the issue on March 28.

The meeting is being organised by Kew residents who oppose the erection of the 220kv line which will run through Kew on its way from Brunswick to Richmond.

It is being held in the Kew library complex hall, off Cotham Road, on Monday, March 28, and starts at 8.00 pm.

The meeting will enable residents who are interested in the powerline issue to become better acquainted with recent events and developments, to demonstrate their opposition to the line, and, hopefully, to form some

resolutions on their preferences for undergrounding the line.

Council has always objected to the powerline because of the environmental damage the line will surely cause to sensitive bushland areas like Yarra Bend Park.

Council has consistently held the view that the powerline should go underground for this reason and for aesthetic reasons and has always supported residents and environmental groups who also share these views.

Council has also offered financial support to publicise the public meeting and to help meet other organisational costs associated with it.

John Moore of the Powerline Action Group, Dr John Colebatch, an oncologist and former Kilpatrick Cancer Research Fellow, and our own councillor, Professor Peter McIntyre,



• *Jim Tutt, Mayor of Kew.*

former chairman of the Merri Yarra Municipal Protection Committee, will be the main guest speakers at the meeting.

They've made it

After a 12 month painstaking search and the feeling that they'd never make it, Kew Emergency Housing Steering Committee has finally bought a flat which will provide emergency housing for Kew families.

Rhonda McCaw, the Committee's co-ordinator, said "We're so excited. We went to the auction with the Ministry of Housing official who had to bid on our behalf and we held our breaths as the auctioneer set the bidding going."

"There were a couple of strong bidders to start with and we thought we had no chance of success, but they dropped out and we couldn't believe it when the auctioneer knocked the flat down to us."

"The committee has worked very hard since last August when we first found out that the Ministry of Housing was prepared to give us a grant to find an emergency house for Kew families."

"Some people might think that Kew families wouldn't experience a housing crisis, but Inner East Housing Ministry figures for 1987 tell a different tale."

"This type of accommodation is absolutely necessary in Kew. In the past year in the Kew/Hawthorn area, more than 100 requests for short-term emergency housing for families were received by the Housing Ministry's Inner Eastern Region."

Rhonda said that of these requests, the greatest need was for single parents with children and couples with children. Most applicants were on supporting parents' benefits or unemployment benefits, and most cited inadequate or unsuitable housing, or very high rents in the private sector, as their main reason for needing emergency help.

Kew's emergency house is actually a flat. It has two bedrooms, one with built-in robes, and is light, bright and airy. It also has a lounge/dining and kitchen/meals area, a large bathroom with laundry facilities, and is close to public transport and Willsmere shops.

The flat is on the ground floor and has a carport.

Rhonda said the committee of management will give preference to Kew families, but if the flat is vacant at any time, families from neighbouring suburbs could be accommodated.

The flat will be available to one family at a time for up to three months. It is not a half-way house but a house which can give a family breathing space while they look around for a suitable house in which to live.

"We aim to keep people's lives as normal as possible", Rhonda said. "Just because a family has housing problems shouldn't mean that they have to take their kids out of school or interrupt their working lives while they sort out their housing situation. They need the security that we can offer them and we think our house will always be full."

Once the Housing Ministry prepares the flat ready to take its first family — and that should be in early August — it will need to be furnished.

That's where the larger Kew community can help.

If you know that you're moving in a couple of months time and there'll be things you won't want to take with you — or if you know that you'll be buying a new household item or piece of furniture soon and don't know what you'll do with the old one — spare a thought for those families who could do with your help.

The committee needs lounge, dining and kitchen furniture, a wardrobe, a double bed, single bed, cot, and preferably, bunk beds, a fridge and a washing machine.

It also needs all household items like linen, blankets, pots, pans, crockery, cutlery and small electrical appliances.

You can find out more about who is eligible to use the emergency house by ringing Rhonda McCaw on 817 2940.

You can also ring her if you have goods to donate.

COUNCIL MEETING DATES

April 5	Easter Tuesday (no meetings)
12	Standing Committees 7.30 pm
19	General Purposes Committee 7.30 pm
26	Council at 8.15 pm

Meetings are held in the Committee Rooms and Council Chamber at the Municipal Offices and all are open to the public. Copies of agendas are available in the Kew Library, prior to each meeting.

New personal counselling service for Kew

St Hilary's Anglican Church, Kew, has a new personal counselling service.

Called Keriva, the service provides professionally competent counselling for people with personal struggles and those with difficulties in relationships with others.

Elizabeth Conway, Director of Keriva, said "Counselling is arranged by appointment and takes place in a confidential, professional relationship. We focus on understanding, the taking of appropriate responsibility, and change — in the context of support."

Elizabeth said that to help meet the cost of the service, participants would be asked to pay a small fee, based on their ability to pay. She was quick to point out, however, that no-one would be excluded from access to the service for financial reasons.

If you think you could benefit by contacting Keriva, ring 817 5416, or call in at St Hilary's, 12 John Street, Kew.

NOTICES

Boroondara Bushwalkers will hold their monthly meetings on the second Thursday of each month from May onwards, instead of the second Wednesday as previously. The meetings are held in Hall no. 3, Kew Library complex, off Cotham Road, at 8 pm. Details: Fritz Schaumburg, President, on 817 1640.

★ ★ ★

Care-Force Family Support Services are holding a film luncheon at the Rivoli Theatre, Camberwell, on Monday, May 23 at 11.00 am.

Tickets are now available. The price of \$8.50 includes luncheon and the film "Radio Days" — an enjoyable Woody Allen comedy which recalls family life and entertainment in the Thirties.

A trading table will be set up in the foyer — donations of suitable goods welcome. Enquiries and bookings: Contact Care-Force on 882 2523 or Sandra on 299 1365 after hours.

★ ★ ★

Kew Philharmonic Society's first subscription concert for 1988 is on Tuesday, May 3 at 8 pm, in Kew Uniting Church, Highbury Grove.

The orchestra program includes Schubert's Symphony no. 4 in D minor and the Hebrides overture by Mendelssohn.

And the choir will perform three songs of farewell by Parry, two songs by Henry Purcell and a madrigal by Morley.

Tickets \$6. Concession \$4, from Valda Fouvy, 817 1881, or Lola Stokes, 817 3186.

★ ★ ★

The Hartwell Players are presenting 'Life with Father' — a very funny play which will appeal to the whole family — in the Kew High School Community Theatre, High Street, East Kew, from Wednesday, April 27 till Saturday April 30.

Performances commence at 8.15 pm and there will be a matinee on Saturday, April 30 at 2.00 pm.

Adults \$8; Students, Pensioners and Matinee tickets \$5; a family ticket \$21.

Tickets for the gala first night performance on April 27 are \$12 and \$9. A substantial supper with the actors after the show is included in the price.

To book, ring Mrs Clementson on 29 5998.

★ ★ ★

Camberwell Music Society's Concert Season for 1988 gets underway with the Wednesday morning series on April 20 at 10.30 am and the Saturday series on April 23, at 8.15 pm.

The concerts are held in St John's Hall, 522 Burke Road, Camberwell Junction.

Single concert rates are \$9 and \$4 for evenings and \$3, \$1 and 60 cents for the morning series. Subscription rates are from \$20 to \$40 for 11 concerts.

Enquiries: Margaret Sharp, 29 3935 or Dorothy Thorpe, 288 2200.

Bicentennial fashion parade

The Friends of Bodalla are holding a mannequin parade with a difference in the Hartwell Uniting Church Hall, Eddy Avenue, Hartwell, on Tuesday, April 19 at 11 am.

Church members will model the gowns of their mothers and grandmothers accompanied by the songs of the period — hopefully with audience participation!

A basket lunch will be provided at a cost of \$6, with the proceeds providing shower chairs for frail, elderly patients at Bodalla, a Uniting Church hospital in Walpole Street, Kew.

A trading table at the parade will give everyone another opportunity to contribute to the purchase of the chairs which cost about \$500 each.

Four of them are needed now.

The Friends of Bodalla come mainly from the relatives and friends of Bodalla's residents.

From the beginning, it was obvious that funds, amenities and voluntary help would be needed at Bodalla, and since 1974, the Friends have been providing their help in these ways.

If you think you would like to join the Friends of Bodalla or would like to go to their fashion parade, please ring 25 6298, 859 8016 or Bodalla itself on 862 1355.

Second newsletter for parents

In June last year, a highly successful and much-praised newsletter for parents was published and distributed by Kew Children's Services Consultative Committee.

The committee has funding for publication of a second newsletter — only articles and advertisers await.

What the committee needs is interested members of the Kew community to form an editorial committee.

For further information or to offer your help, please contact: Alison Dalziel on 859 2585 or Elizabeth Sullivan on 862 2466 on Mondays, Wednesdays and Fridays.



Aids seminar for Kew

A day seminar, "How does Aids affect us?" will be held at St Hilary's Anglican Church, 12 John Street, Kew, on May 23.

Sponsored by the Anglican Mothers' Union, the seminar's speakers include Dr John Roffey, Anglican Aids Education and Policy Officer; Sister Hilda, Anglican Chaplain to people with Aids; Mrs Judith Jones of the Social Biology Resource Centre; Mrs Jenny Ross of the Haemophilia Foundation of Victoria and NACAIDS, and Mrs Joan Watson, Senior Social Worker at Fairfield Hospital.

The seminar starts at 9.30 am and finishes at 2.30 pm. BYO lunch, but tea and coffee will be provided.

Donation is \$2 and enquiries can be made on 762 3852 or 45 2321.

Notes from the Bicentennial Authority



So far, over 150 Australians, 100 years and over, are participating in the Bicentennial Centenaries project.

If you are 100 or over — or know someone who is — and you would like to receive a commemorative certificate, contact Norma Cowper or Kate Agnew at the ABA on (02) 236 1988.

If you are organising a Bicentennial event, don't forget you need to cater for the needs of all people — including those with disabilities.

The ABA publication, ACCESS HANDBOOK, will help you choose your venue and plan your project.

Write to the ABA, GPO Box AUS 1988, Melbourne, 3001.

500 Australian schools have already joined *Schoolmates*, a project which matches schools in Australia with those from the United States. But there's still room for 300 more Australian schools to join in.

Talk to your teachers, or your Principal, and ask them to find out more about the project from Kathy Jones at the Australian Bicentennial Authority on (02) 236 1988.

Wednesdays at HKC

By Chris Finkelstein

Bob and Ted and Carol and Alice; Jack and Jill; Dave and Mable; Tom, Dick and Harry. They're all at HKC on Wednesdays.

HKC is an activities day centre set up to cater for the needs of elderly people in the Hawthorn, Kew, Camberwell areas.

The participants meet in the Kew Baptist Church Hall each Wednesday from 9.30 am till 2.30 pm.

HKC is run by a dwindling number of devoted volunteers. If you like to talk, can play the piano or sing, can turn out a batch of scones, or would like to help with the sandwiches, carpet bowls, bingo or dishes, ring us or just come to the Kew Baptist Church Hall, Highbury Grove, Kew, on any Wednesday between 9 am and 3 pm.

HKC needs voluntary help and its co-ordinators want to keep HKC the pride of the area. You don't need any special skills and you don't need to commit yourself. If you are interested in people and have an hour or two, go along and see if you like the group.

Activities at HKC are co-ordinated by a staff of two — Chris and Robyn.

"Some weeks we just make it, by running ourselves ragged, one volunteer said. There can never be too many volunteers."

Chris and Robyn agree. "Sometimes there's a real party atmosphere in the kitchen", said

Chris, "with volunteers meeting each week and enjoying each other's company. And when the kitchen duties are finished, the volunteers sit and talk to the participants, play a game, or supervise an activity".

Robyn, particularly, would like some help. As recreation officer, she has a number of ideas for programs she would like to implement.

Chris, a writer, would like help with an oral history program.

"Everyone here has a life story. I want to tape these stories, collate them, and ultimately get them published. There are people coming here who were born in other countries; people who spent their lives on the land; and those who spent their lives in cities."

"Everyone has seen a lot of changes and has had to make a lot of changes themselves. Even getting used to getting older and getting used to losing some skills is a story. But I need help. We need help — to run the program and to follow our special interests."

Volunteers of any age and either sex are welcome at HKC.

"Don't feel shy or intimidated," says Chris. "And don't feel you will commit yourself. Come and try us. Then come as often as you want. An irregular commitment is alright too."

Those interested can contact Bev or Eileen at Hawthorn Day Hospital to make more enquiries, on 818 1386.

Smoke. It's no joke



Picture for a moment, Autumn.

It's a beautiful time of the year. Crisp mornings, sunny afternoons, and blue skies with fluffy clouds.

Gentle breezes, warm sunshine, occasional showers.

Trees whose vibrant green leaves turn slowly red or golden to a rich, darker brown and fall to earth to form a crisp, crackly carpet.

It's a beautiful image isn't it? But all too often, that image is shattered by smoke. Smoke that pollutes our air and our neighbours' properties.

Incinerators and burning off contribute needlessly to Melbourne's air pollution and ruin Autumn for everyone.

Burning any substance releases particles into the air and produces gases which pollute our air.

It is this pollution which people complain to us about. And so they should.

Our by-law, number 115, prohibits burning off at any time on a Sunday or Monday or on any other day outside the hours of 8 am and 6 pm.

It also prohibits the burning of any substance which causes toxic or offensive fumes and excessive smoke.

And it prohibits the burning of any substance which is either not in a properly constructed fireplace inside your home or a properly constructed incinerator outside.

The incinerator outside must be brick or concrete and it must have a tight-fitting lid and a spark arrester which will stop sparks or the spread of fire.

Penalty for an offence against this by-law is \$400.

There is simply no reason to continue burning substances when Council provides two rubbish collections each week; a recycling service for papers, boxes and bottles; issues four free tipping vouchers per year for garden and other hard-to-dispose-of rubbish; and has two hard rubbish collections per year. Council can also provide information on composting substances like dried autumn leaves and other light prunings, weeds, grass clippings, old tea leaves and kitchen wastes such as vegetable and fruit matter.

If you must burn off, remember your responsibilities to your neighbours. Be especially alert and especially considerate on forecast smog alert days when polluted air can cause severe distress to children, the elderly, and those with respiratory problems.

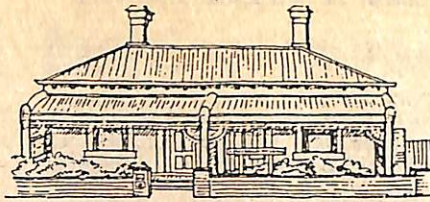
So think about it and think about what you can do to clean up your act and clean up our air.



• PEG (left) and ROBYN (right), volunteers at HKC Activity Centre, Kew, prepare Wednesday's lunch.

KEW COMMUNITY HOUSE

Co-ordinator: Judy Price



6 DERBY STREET, KEW, VIC. 3101
Telephone: 862 3126

Short courses for term one are now well underway.

Among them are home maintenance, entree cooking, simple cross stitch and relaxation.

Longer courses that go for the whole year include conversational German, Italian and Migrant English. These can be joined during the year.

Our parenting course centred around the STEP program — Systematic Training for Effective Parenting — is full, but we hope to run another later in the year. Get yourself on the waiting list if you are interested.

Other courses starting after Easter are calligraphy, flower pressing and, hopefully, drawing out your creativity and leadlighting.

As well as our program copies in the Library, some shops, kindergartens and infant welfare centres, some copies are posted on the verandah notice board at Community House for you to pick up anytime.

New groups using the House for meetings are Very Special Kids, Literacy Tutoring and a playgroup.

Our very successful Drop-In group meets every Wednesday. Some people take turns to prepare lunch which is available for \$1 per person. Nationalities of group members so far are Canadian, South American, Polish and Filipino.

All ages are represented, the atmosphere is very friendly and the group open to all. Come and join us each Wednesday between 11 am and 4 pm.

Once a month on drop-in day we have a program called 'Know your Community'. We still prepare and serve lunch, but we also have a guest speaker. Details are advertised in Kewriosity's Dates for the month.

Once a month, also on a Wednesday, we have an enjoyable and easy community walk. We also advertise details of this in Kewriosity's dates for the month.

Kew Community House is your house and is open to the whole community.

If you want to know more about us just come along, or ring me on 862 3126.

Kew Easter School Holiday Program

The City of Kew is running a school holiday program for children during the Easter holidays, in conjunction with East Kew and Kew Primary Schools.

The program consists of three full-day excursions on Wednesday April 6, Thursday April 7, and Friday April 8.

All excursions depart from 'The Pavilion', Kew Primary School, Peel Street, at 9am and return at 5pm.

Children can arrive at 8am and can be collected up to 6pm each day of the program.

On Wednesday the excursion is to Animal Kingdom. The cost of \$16.50 includes a barbecue lunch.

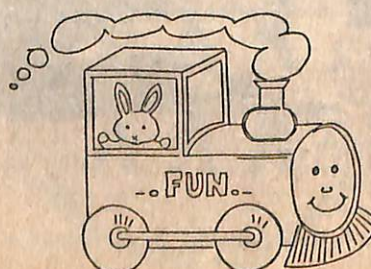
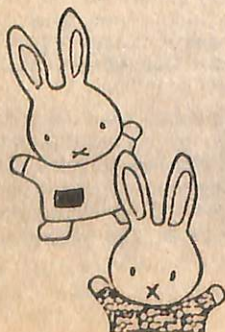
On Thursday, the children will be taken on an exciting journey to Sovereign Hill Goldmining Township, near Ballarat. At \$17.50 the cost includes a tour of the mine. Children should take a BYO lunch.

Friday's journey is through the Dandenongs on 'Puffing Billy' and a trip to the model rail exhibition. Cost is \$18 and BYO lunch should be provided.

Concessions on the cost are available on request.

Places on the program have been filling rapidly but if you enquire at the Social Development Department on 862 2466, there may still be a place available for your child.

Ask for Donna Morton or Stig Vertanen.



Tenants information service for Kew residents

Are you a tenant?

Are you having trouble getting your bond returned?

Are you having problems getting repairs done on your house or flat?

Do you want to know your rights as a tenant?

Have you received a notice to vacate and want to know what you can do?

Have you ever tried ringing the Tenants Union and can't get through?

If the answer is YES to any of these questions, or you want any other tenancy information, you can contact the *Inner East Tenants Information Service*.

The Inner East Tenants Information Service is a service provided for private and public tenants in the areas of Kew, Camberwell, Box Hill, Waverley, Hawthorn and Doncaster/Templestowe.

The service also provides tenancy education sessions to any interested groups.

So... if you want any information concerning your tenancy, or are interested in having an education session, just give Deb or Denise a call on 890 5411, or call in at 12 Rutland Road, Box Hill.

The service is open Monday to Friday 9.30am to 1.30pm.

And... how about keeping this information in a safe place. You never know when you might need it.



Asthma education

The Asthma Foundation conducts regular educational forums at its Advisory and Education Centre, 2 Highfield Grove, Kew.

The educational sessions are free and are for small groups of patients with asthma, and their families.

Other interested persons such as health providers, youth leaders, teachers or community workers are also welcome to attend.

The sessions are conducted by a specialist physician.

They include an introductory educational session using specially prepared audio-visual material; demonstrations of techniques to make sure that inhalers, compressed air nebulizers and other devices are used correctly.

And a question and answer session where individual concerns can be raised either in a group setting or on a more personal one-to-one basis.

Margaret Hampson, Education Officer for the Foundation, said "We educate and explain the appropriate treatment regimes prescribed and the aims of preventive medication".

"As well, we try to create an awareness of the possible preventable side effects of

treatment and concentrate on the patient as the responsible person in the management of overall treatment programs advised by individual doctors".

"Experience has shown that these sessions are valuable learning times. Asthmatics can appreciate the basic clinical insights provided so they become better self-managers of their asthma. Their doctors have frequently found that managements have been better understood and complied with by their patients following an Asthma Foundation education session."

Margaret said that no direct medical referral is required and there is no charge for the service. It is made possible through the generous support of the Lord Mayor's Fund for Metropolitan Hospitals and Charities.

Anyone interested need only contact the Foundation to find out the dates for each session. The telephone number is 861 5666.

April sessions are on Tuesday 12th at 10.30 am and 7.30 pm.

The Foundation can provide similar presentations on request to community groups, community health centres, hospitals and doctors' surgeries. Ring the Education Officer, Margaret Hampson, to enquire, on 861 5666.



• Mrs Margaret Hampson, Education Officer with The Asthma Foundation of Victoria, giving an education session at a local school.

Relics from the outer circle

By Barry Butcher

Recent excavations during the construction of the traffic roundabout at the intersection of Willsmere Road and Earl Street, brought to life an interesting relic of the Outer Circle Railway.

An iron girder bridge carried Willsmere Road traffic over the railway line and it was a portion of the now buried bridge which was rediscovered during the roundabout's construction.

Willsmere Railway Station was formerly sited next to the bridge in Earl Street.

Passenger services on the Outer Circle Railway ran from April 24, 1891 until April 12, 1893.

The line ran from Fairfield Park to Oakleigh and always operated at a loss. Essentially a shuttle service from Oakleigh through Camberwell to Fairfield, it was comparatively expensive for the time and had an inconvenient timetable.

The area the railway served was not developed at that stage and with the depression of the mid-1890s, there was no prospect of a traffic increase.

The major reason for building the Outer Circle line was to run goods trains from Gippsland to the Spencer Street terminal, but the route was never used.

The line itself was partly used in 1893 even though the Kew section was in disuse. The well-constructed Fairfield Road Bridge, now known as the Chandler Highway road bridge, which joins Kew and Heidelberg, was originally over the Outer Circle line.

This is the bridge which carries much modern traffic in and out of Kew now, but it almost languished for lack of funds at the time.

In 1913, Kew and Heidelberg Councils proposed to use the Fairfield Bridge over the Outer Circle line as a road bridge between the two districts, however the perennial problem of lack of funds meant that this was not done until 1929.

Another railway bridge whose foundations still support modern road traffic was at the junction of Harp Road and High Street.

The east side is still clearly visible.

In this age of high technology, it is interesting to know that the foundations of the Willsmere and Harp Road bridges, and the original Fairfield Road Bridge, are still carrying heavy modern traffic even though they are nearly one hundred years old.

★ ★ ★ ★ ★

This information was supplied to Kewriosity by Barry Butcher, secretary of the Willsmere Village Traders Association.

In this Bicentennial year, we hope to bring you a regular column on interesting facts associated with the history of Kew.

Kew hockey news

Winter competitions of the Victorian Hockey Association start in mid-April, and this year, Kew Mens' Hockey Club is fielding six teams and Kew Womens' Hockey Club two teams.

The Kew Junior Hockey Club is fielding 14 teams from the under nine's to the under 17's.

Last year, Kew's Senior first team had a very successful year in the State Division League One and is aiming to improve its ranking among Victoria's top eight teams in 1988.

The higher grades train and play matches almost entirely on one of six synthetic surfaces around Melbourne, but the rest of the Club's teams use Victoria Park as their home ground.

The juniors play at Willsmere Park each Saturday morning and last year, eight of the junior teams finished in the top four of the competition.

The Club also had six players selected in State representative teams.

If you would like to find out more about hockey in Kew please contact.

Juniors: Ken Brick, 817 5506

Women: Shona Gilchrist, 836 1976

Men: Noel Kelly, 859 9325

Kew band notes

Kew Citizens' Band is busily rehearsing and preparing for the Australian Bicentenary Band Championships being held in Sydney over Easter.

This follows a busy few months when the band successfully participated in Australia's Bicentennial Celebrations in Melbourne on Australia Day, and led the parade in the annual Kew Festival just last month.

The band's junior group has some instruments available so beginners are welcome. The group meets at 6 pm on Monday evenings.

The band's newly-formed Youth Band also rehearses on Monday nights from 6-8 pm. Players up to the age of nineteen are welcome to join and to know the thrill of performing in a wide range of musical activities within the City of Kew and outside in the wider community.

For more information ring Ian Mathers on 729 4988 (p) or John Naismith on 481 1056 (p).

Footy News

Kew Football Club Coach, Brett Burden, is pleased with the players progress so far this season — especially the enthusiasm shown by last year's under 16 players led by Captain, Tom Gourdoulis.

Brett said that established players like Joey Busuttil, Matthew Cavanagh, Robert Love, Paul Clayton and Neil Duncan, are setting a great example to the under 16 youngsters this year and to other new recruits such as Owen Greenwood from Hawthorn Citizens.

Club President, Ted Kelly, at the 'Meet the Recruits' barbecue held in March, said the club's progress so far in its pre-season matches certainly points to a successful season in 1988.

April fixture is: April 9 — Kew v University Blacks at Victoria Park. April 16 — Kew v Monash Blues — away. April 23 — Kew v Therry C.C.O.B. at Victoria Park. April 30 — Kew v Caulfield Grammarians at Victoria Park.

The Kew Football Club History currently being compiled, is of great interest to supporters and to the community generally. But Ian Job, Vice-President of the club, needs supporters and former supporters with knowledge of the 1920s and 1930s or earlier, to contact him.

You can ring Ian on 418 3223 (w) or 859 4706 (h).

New service club wants Kew members

IMPACT — a club interested in serving others, would like new members from Kew.

The club, sponsored by the Rotary Club of Camberwell, wants members over 28 years of age who are interested in doing community work and in widening their circle of friends.

Impact helps the underprivileged with practical assistance and fundraising. It helps the senior citizens in our community with gardening and routine household maintenance. Its members visit the sick in hospital.

Impact Clubs operate in Melbourne, country Victoria, in other states, and in New Zealand.

The joining fee is minimal, monthly meetings are usually held on the last Tuesday of the month in Camberwell, and the club is open to men and women.

The club also organises lots of social activities — car rallies, restaurant evenings, progressive dinners, film and theatre nights, weekends and day trips to country Victoria — for members and their friends.

If the idea of membership of the Impact Club appeals to you, you can make further enquiries by contacting: Grant Davies, Club President, 569 5942 or Hans de Koster, Club publicist, 857 9061.

Deadline

Kewriosity is prepared and edited by Olwyn Eaton, Information Officer for the City of Kew, and a community-based editorial committee. Copy for the May issue should reach the Municipal Offices by April 6.

Keeping you informed

Have you ever wondered who should pay the bills or what would happen to your property or investments if you became temporarily or permanently disabled?

Or who would look after your affairs while you took the extended overseas trip you've always dreamed of, or have been planning?

In either case, the grant of *Power of Attorney* to a trusted friend or relative is a useful way to solve the problem.

In Victoria there are now two distinct types of *Power of Attorney*. You need to decide which best meets your needs.

In its simpler form, a *Power of Attorney* stops being effective if you become physically or intellectually disabled. On the other hand, 'Enduring' power only becomes invalid when you revoke that power or when you die.

Kew Citizens' Advice Bureau can tell you where you can get standard *Power of Attorney* forms. If you need help and advice in completing them, the Bureau can help you then, too.

You can get free legal advice at the Bureau on Tuesday evenings. One of the Bureau's solicitors is available between 7.30 and 9 pm each Tuesday to help with this or any other legal problem.

The Bureau is open for general enquiries weekdays between 10 am and 3 pm. It is at the rear of the Kew Library complex, just off Cotham Road, or you can call during opening hours on 861 5244.



Community Directory 1988

You should by now have received your City of Kew Community Directory 1988.

Copies are delivered free to households or are mailed direct to institutions.

If your copy hasn't arrived, please contact the City's Information Officer, Olwyn Eaton, who will arrange to get a copy to you. Telephone: 862 2466.