

KEWRIOSITY

Municipal Offices,
Charles St., Kew, 3101

FEBRUARY, 1988

Govt. plans for Willsmere vital to Kew

THE State Government's plan to redevelop the Willsmere Hospital complex is of vital interest to the City of Kew.

By the end of 1988, the Government's Major Projects Unit hopes to have sold the Willsmere site to the private sector for redevelopment.

The New Willsmere plan is one of eight similar projects being managed by the Minister responsible for major projects, Mr Evan Walker.

Mr Walker has set up the Willsmere Advisory Committee to act as a focus for community input into the project. His department is also seeking community reactions to proposals which emerge for the site's redevelopment.

Council, with a representative on the Committee, has adopted some broad objectives in relation to the site.

It wants to protect surrounding residential areas, particularly against inappropriate buildings

and excessive traffic volume.

It wants to protect the environmentally sensitive river corridor along the site.

It wants to protect and enhance Yarra Bend Park — 500 acres of bushland of unique environmental and recreational importance to Kew.

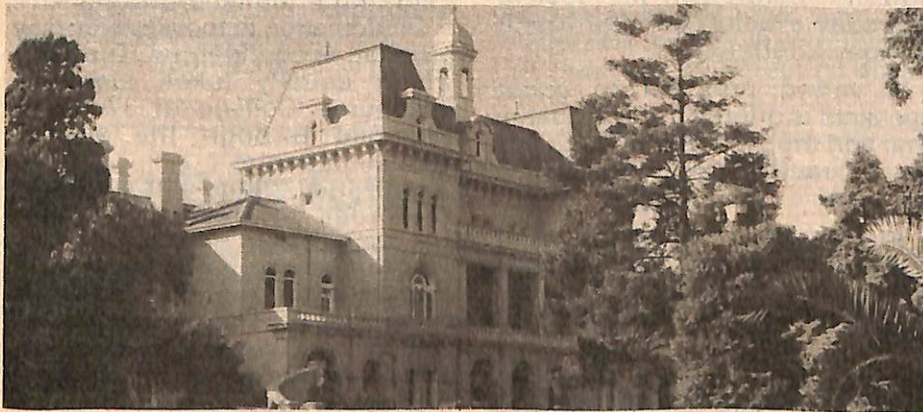
Council also wants to preserve the existing main building complex, the status of The Boulevard as a scenic route and to increase its rating base.

Progressive closure of the hospital means it should be empty by December. Replacement services are being provided throughout the Melbourne metropolitan area at a total cost to the government of about \$35 million.

These cover the complete range of care: acute inpatient services, psychogeriatric nursing home services, cluster housing and community-based mental health services.

Representatives of the major projects unit have been asked to address Council's General Purposes Committee on February 16.

Local residents who are interested in the project, or who have special concerns, should ring the Chief Executive, Adrian Halliday on 862 2466, or write to him at the Municipal Offices, P.O. Box 42, Kew, 3101.



● *Willsmere Hospital facade and entrance*

Kew Festival nears

THE next edition of Kewriosity will contain your Bicentennial Kew Festival program. But a few of the highlights will enable you to look ahead to get the maximum benefit from the many planned activities.

The Kew Festival, from March 18-27, is organised by the community, for the community. Most of its activities are free of charge or the charges are minimal. It's made for families so bring the children along and join in the fun.

March 19 — the Fabulous Fun day. Highlights are a street parade, free entertainment, giant slide, Caritas Christi's bed race and at

night, a gigantic fireworks display.

March 20 — Ecumenical Service at the Carmelite Monastery.

March 25 — Fancy Dress Ball at Sacred Heart.

March 26 — The Kew City Triathlon; Billy Cart and Skate Board Derby.

March 27 — Family Day at the Yarra Bank — children's entertainment, food and discounted boat hire.

'Images of Kew', photographic competition and exhibition in the Kew Library during Kew Festival fortnight.

Rates due

WE want to remind our ratepayers that the second municipal rate instalment is due on February 29, 1988.

Failure to pay the rate instalment by this date means that interest at the annual rate of 17.25 per cent will be charged from December 10, 1987 — the date the rates became due and payable.

The interest charge is a requirement of the Local Government Act.

Dates for February

11

Kew Garden Club meets at Senior Citizens' Centre at 8.00 p.m. Guest speaker is Frank Cole of the Australian Daffodil Society.

16

Nursing Mothers' afternoon tea. 1.30 to 3.00 p.m. Babies and toddlers welcome. Ring 861 9665 or 817 5721 for details.

17

Kew Arthritis Self-Help Group meets in Hall No. 3. Library complex, Cotham Road, at 10.30 a.m. Morning tea. Visitors welcome. Contact 862 2021 or 836 8794 for more information.

22

First meeting for Kew Daytime Garden Club for 1988. 1.30 p.m. at Senior Citizens' Centre. Topic: General gardening. Ring 859 2977 for more details.

25

Kew Probus Club Inc. meeting, 10 a.m., RSL Club Rooms, 63 Cotham Road. Guest speaker, The Hon. Joseph Rafferty, former Agent-General for Victoria in London.

Garden Club award

KEW Garden Club member, Bill Pascoe, has been given the Royal Horticultural Society's highest award, the John Pascoe Fawkner Bronze Medal.

Bill received his award at the Kew Garden Club Christmas party held at the Senior Citizens' Centre in High Street.

The award acknowledges his contribution to Kew Garden Club since its inception in 1978 and was presented to him by club President, Alex Mackay.

The Kew Garden Club holds two

meetings each month in the Senior Citizens' Centre: on the second Thursday evening and the fourth Monday afternoon.

A varied program of guest speakers is offered throughout the year and trips to some of Victoria's most beautiful gardens are also arranged.

For more information regarding the evening group contact Alex Mackay on 859 6086. For the afternoon group, contact Win Fearon on 859 2977.



● Bill Pascoe (left) of Kew Garden Club with Club President, Alex Mackay.

Back to basics

"MANY adults have difficulty writing, spelling and reading with confidence. They often don't realise that it is possible to make a fresh start at their basic education."

That's the opinion of Mary Sutherland who co-ordinates the volunteer tutor program for adult literacy at Swinburne College of TAFE.

Mary said that many adults experience difficulties in these basic skills which can often be embarrassing for them and can sometimes be very limiting at work.

"Often the only way people hear about the opportunity to improve their writing, spelling and reading skills is through a trusted friend or family member. Someone who understands their dilemma."

If you know someone who may be interested in the program, Mary would like you to pass on the following information to them.

Participation in the adult literacy program is confidential. Tutoring, which usually takes place at Swinburne College of TAFE, is arranged through the access education centre.

Individual tuition with a trained volunteer in day or evening sessions is also possible.

For those who prefer studying in a small group, English workshops are offered in cycles of ten weeks.

These sessions are held on either Monday mornings or Wednesday evenings.

The only requirement for entry to both programs, Mary said, is that students should be able to speak fluent English.

For more information, details on enrolment, or on individual needs, you can contact Mary Sutherland or Robyn Thomas on 819 8816. You can leave a message on 819 8118 and your call will be returned.

KEW Ballet Class, formerly at Kew Uniting Hall in Highbury Grove, has moved.

The class is now located at the Bulleen and Templestowe Youth Club Hall on Thompsons Road, Bulleen. It is held each Wednesday at 5 pm.

For more information contact Ms. F. Corlass on 842 7326.

Commentary

IN the last edition of Kewriosity, I referred to two very important issues facing our community and asked for your support to resolve them.

The first, the possible closure of St George's Hospital as a public facility, remains undecided. News of the State Government's decision is due soon.

The second, the construction of the State Electricity Commission's high voltage transmission line from Brunswick to Richmond, continues unabated.

In early December, Council was told that construction of the 220kv transmission line would start in the New Year. That work has since begun.

At our last meeting — on December 15, 1987 — we discussed the issue. We decided to ask the Minister for Planning and Environment, Mr Tom Roper, to impose a blanket Interim Development Order over land in Studley Park Ward which will be directly affected by the construction.

We are waiting for Mr Roper's decision.

The land, a privately owned market garden and one other private property near Young Street, covers 95 hectares.

It will house two new giant poles 34 metres and 27 metres high.

Six other poles, about nine storeys high, will replace existing towers in Yarra Bend Park along the transmission line's route.

Council is not only concerned about the possible effects of electro-magnetic radiation from the line, the intrusion into private property, and the permanent visual effects in Studley Park and in the municipality generally.

It is also concerned about the effect of the line's construction on the sensitive river environment of Yarra Bend Park. An environment of great ecological and historical significance to Melbourne and to Victoria.

The park is home to eight plants of State significance, 50 of regional significance and 218 indigenous plants which could be threatened by construction of the line.



● *Jim Tutt, Mayor of Kew.*

Only four kilometres from the centre of Melbourne, Yarra Bend Park, with its 500 acres of bushland, is one of the city's unique and valuable environmental and recreational assets.

Council fully supports the work of the Merri Yarra Municipal Protection Committee, Studley Park Conservation Society Limited and other concerned residents groups. Together we will continue to fight for the protection of individual property and the preservation of our parkland.

An urban forest for Kew

THE City of Kew, in association with the Rotary Club of East Kew, is to develop an urban forest in Stradbroke Park.

The project is part of the Council's commitment to create significant and permanent reminders of Kew's involvement in Australia's Bicentennial year.

Council plans to turn a significant proportion of the existing treed grassland which surrounds the Stradbroke Park sporting facilities and extends through to High Street, into an open bushland area.

The planting involves about 3,500 trees and shrubs in both open grassland and group plantings.

Most of the work will be concentrated along the northern arm of the park, the western side of the playing fields, and the south arm of the park.

Council hopes that eventually Kew will have an area of light forest which can not only maintain itself through natural re-vegetation, but will also attract a diversity of wildlife and native flora which has long since disappeared from the Kew area.

Some areas of treed grassland will be left but Council hopes that the treed canopy will be much denser than it is now.

Future plans include more seating and pathways, nature trails and visitor information areas.

Weed eradication in the areas to be planted has already begun but Council and East Kew Rotary Club have yet to decide the extent of the club's involvement in planting.

Initial planting is expected to start in Autumn/Winter.

Further information can be obtained by contacting Bruce Schroder, Superintendent of Parks and Gardens, on 862 1773.

Council meeting dates for February:

- 9 Standing Committees 7.30 p.m.
- 16 General Purposes Committee 7.30 p.m.
- 23 Council 8.15 p.m.

Meetings are held in the Committee Rooms and Council Chamber at the Municipal Offices and are open to the public.

Kewriosity deadline

Kewriosity is prepared by the Information Officer, Olwyn Eaton, and a community-based Editorial Committee. Copy for the March issue which features the Kew Festival program should reach the Municipal Offices by February 3. Priority will be given to the most important issues/information and other copy held over until the April issue.

Notices

Kew Historical Society's first meeting for 1988 is on Wednesday, February 17, at 8.00 p.m. in Hall 3 of the library complex.

Guest speakers are Mr and Mrs Canham who will reminisce about Kew. Visitors are welcome.

Members are reminded that all meetings during 1988 will be held on the third Wednesday of the month, not the second Wednesday of the month as in previous years.

Contact Sue Leong on 817 4660 if you have any queries.

Kew Chinese Christian Church Inc., 20 Union Street, would like residents to know they are welcome to join in the Chinese New Year celebrations at the church on February 17.

The festivities start with a dinner at 6.00 p.m. At 7.15 p.m. a short talk follows and then the Sunday School children will present a concert featuring Chinese music and dancing.

To book, ring 859 2475.

Kew Occasional Care Centre in Strathalbyn Street, East Kew — behind the Infant Welfare Centre — has re-opened for 1988.

The Centre provides a safe and caring environment for children from birth to six years of age, for up to four hours at a time, whilst parents attend appointments and other engagements.

Bookings need to be made in advance wherever possible.

Ring Margaret Farnfield or Dale Black on 859 6459 for further details.

Play Scrabble?

OR HAVE trouble finding a partner?

Then you might like to join the new Kew Scrabble Club which meets each Wednesday at 7.30 p.m. at Kew Community House, 6-8 Derby Street, Kew.

Any standard player or beginner is welcome and the club would particularly like to see some disabled players join in.

There's wheelchair access to Community House from the rear.

Enquiries should be directed to Leslie Mack on 578 6767.

Kew Friends

FOR the Friends of Kew Library, the highlight of 1987 was the mid-year opening of the new library complex.

The move to the new library premises and the library opening in June was the culmination of a very active and successful year for them.

Since then, the Friends have donated two microfiche readers to the library's genealogy section, a glass display cabinet for the lobby and three equipment tables.

Each year the Friends organise a number of activities and members should watch the Friends notice panel on the outgoing side of the library circulation desk for news of them.

In February, the Friends have planned a visit to the library of the National Gallery of Victoria. The library, which is seldom open to the public, has a unique collection of books covering the whole fine arts field. It also has some old and rare volumes.

If you would like to become a Friend of Kew Library and go on the National Gallery Library tour, please contact Mr Coleman on 859 6415.

Traffic

AS a result of Council's review of the traffic management scheme in area 5 — bounded by High Street, Valerie Street, Asquith Street and Princess Street — some changes will take place later this year. We'll bring you details of those changes as soon as we can.

Many of you will have noticed that work has already started on traffic management within area 6 — bounded by Cotham Road, Burke Road, Harp Road, High Street and Carlisle Street — and should be finished by April.

Area 7 residents — bounded by Barkers Road, High Street, Studley Park Road, Walmer Street and the Yarra River — may like to know that traffic engineering consultants will begin their review in the area in March or April. The consultants will be asking for residents involvement in their study.

Further details on traffic management in either of these



COUNCIL'S popular community recreation program is about to get underway.

The program of gentle exercise, tennis, swimming classes and water playgroup, starts on Monday, February 8.

All classes are run by experienced and qualified instructors in an atmosphere of fun and friendship. The exercise classes are gentle. They are aimed at improving flexibility and fitness.

Swimming classes are designed to improve water confidence, swimming skills and provide water exercises for relaxation. Tennis classes are for beginners — with some experience — and people just interested in 'having a go'.

The program has been running for a few years now and is very popular, so don't miss out. Ring Donna Morton at the Social Development Department to inquire or to book, on 862 2466.

areas, or anywhere else in the municipality, can be obtained by ringing the Traffic Engineer, Don Robertson, on 862 2466.

Images of Kew

FOR all you very late snap happy Kewites, entries in the bicentennial photographic competition and exhibition, 'Images of Kew', close on February 19 at 5.00 p.m.

Judging takes place on February 27. An exhibition of suitable entries starts in the Kew Library on March 12. It finishes on March 26.

Remember, all entries must be mounted ready for exhibition.

If you have a last minute contribution, entry forms showing conditions of entry are available from the Municipal Offices, Charles Street Kew.

You can also ring Rhys Williams on 861 7566 if you have any questions.

Nursing Mothers'

By Carina Buttner

ARRIVING home with a new baby can be a rude shock — particularly if it's your first.

Your so-called "bundle of joy" seems to cry out for attention 24 hours a day, wanting to be fed, bathed, changed and often just cuddled.

Then there's the seemingly endless piles of housework. It's hard to imagine how you ever filled in a day before the long-awaited arrival of junior.

As the constant demands of being a wife and mother mount up,

it's often easy to become lost among your new worries.

But believe it or not, thousands of other women have been through most of it all before — and some of them live in Kew.

The Kew group of the Nursing Mothers' Association of Australia offers new and experienced mums the chance to meet others facing similar problems and joys — there are some!

Coffee mornings, afternoon teas, playgroups and evening discussion meetings in private homes, provide valuable contact for breastfeeding mothers and their babies. Regular social outings include fathers too.

Mothers having problems breastfeeding their baby, or those wondering whether or how long to continue, can call on the expert

help of the group's trained breastfeeding counsellors.

The Nursing Mothers' Association of Australia recognises that not all women may be able to breastfeed their children. But it would like to see support given to mothers who wish to do so.

After a few hard days and sleepless nights, some new mums may feel inclined to abandon breastfeeding. But meeting other women in the same boat may provide the necessary impetus for them to continue past these difficult times.

It does get easier!

Kew's nursing mothers and their babies are keen to meet and share their experiences with new — and old — mums. Don't be shy, give us a call on 861 9665 or 817 5721.

Litter bugs beware

VICTORIA'S new Litter Act which came into force late last year, means that "litter bugs" found guilty of serious offences could face fines of up to \$4,000 plus jail.

Minor offenders could find themselves paying on-the-spot fines of up to \$100.

The Litter Act not only sets tough penalties for those found littering, but closes loopholes in earlier legislation and widens enforcement provisions.

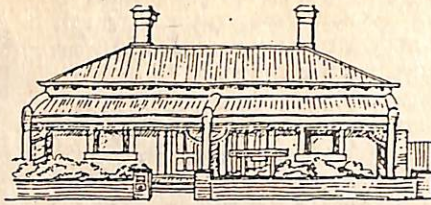
To make sure you know what

you could pay if you're found guilty of littering, we've reproduced some information from the Environment Protection Authority's latest brochure.

- Don't litter
- Don't rubbish your environment
- And don't rubbish Kew

 <p>ON THE SPOT FINES</p> <p>Failure to pick up your litter</p> <p>\$100 <small>(or up to \$2000 in court)</small></p>	 <p>Setting fire to a litter receptacle</p> <p>\$100 <small>(or up to \$2000 in court)</small></p>	 <p>Having an unsecured load on a vehicle</p> <p>\$100 <small>(or up to \$2000 in court)</small></p>	 <p>Littering waterways</p> <p>\$100 <small>(or up to \$2000 in court)</small></p>
 <p>Depositing small items</p> <p>\$20 <small>(or up to \$2000 in court)</small></p>	 <p>SERIOUS OFFENCES (aggravated littering)</p>	 <p>Intentionally depositing litter such as glass, earthenware, metal or crockery up to</p> <p>\$4000 plus imprisonment</p>	 <p>Depositing litter generally</p> <p>\$100 <small>(or up to \$2000 in court)</small></p>
 <p>Defacing litter receptacles</p> <p>\$100 <small>(or up to \$2000 in court)</small></p>	 <p>Depositing litter that is dangerous to people, animals, vehicles, land or water up to</p> <p>\$4000 plus imprisonment</p>	 <p>Intentionally depositing litter in, on, from or towards any vehicle up to</p> <p>\$4000 plus imprisonment</p>	 <p>Depositing litter generally</p> <p>\$100 <small>(or up to \$2000 in court)</small></p>
 <p>Littering from vehicles</p> <p>\$100 <small>(or up to \$2000 in court)</small></p>	 <p>Littering on or in cars</p> <p>\$100 <small>(or up to \$2000 in court)</small></p>	 <p>Misuse of litter bins (e.g. depositing domestic rubbish)</p> <p>\$100 <small>(or up to \$2000 in court)</small></p>	 <p>Dumping rubbish</p> <p>\$100 <small>(or up to \$2000 in court)</small></p>

KEW COMMUNITY HOUSE



6 DERBY STREET, KEW, VIC. 3101
Telephone: 862 3126

HI EVERYONE. What better way to start off the year than by telling you what a lovely Christmas Day we had at our house on December 9.

I don't think there would be many people in Kew who could say they had 75 people home for Christmas lunch. I did. Not without a tremendous amount of help from all my volunteers though.

It was a wonderfully happy time for us and our guests. The culmination of a very happy year for me as the new Community House Co-ordinator.

Again I need some help. After some major surgery in the New Year, I've been trying to get our short courses organised for term one. I've certainly done that, but now I need people to help fold and distribute course leaflets for me. Ring me on 862 3126 if you can offer your services.

Term one courses on the creative side are: flower pressing; art — a life and portrait class; patchwork cushions; cross stitch and crochet.

For practical use are: basic

typing skills; survival maintenance — especially for women without a handyman around, or for men who need home survival skills too; German conversation and Italian conversation.

On the personal development side are: parenting skills, dealing with personal relationships and relaxation. Drawing out your creativity sounds interesting too.

Those with a more unusual slant are: writing those difficult but important letters and entree cooking.

As well as our courses there's Drop-in Day each Wednesday at 11.00 a.m. with a monthly lunchtime guest speaker. We've also got a monthly program of Community Walks — the community bus usually picks up participants and takes them to the starting point.

We've got lots of facilities you can use and lots of opportunities for making new friends, so why not give us a ring on 862 3126 or call in and see us.

Judy Price
Co-ordinator

Belford Oaks

AT long last we're delighted to bring you the news that our new full day care centre, Belford Oaks, at 3 Belford Road Kew, has been completed and will be opening in mid-February.

The Centre's newly-appointed co-ordinator, Joy Nicholson, has been busily interviewing staff and ordering equipment over the past month in readiness for her new little charges. Joy is excitedly preparing for their 'invasion' in a couple of weeks time.

Joy, originally from Ireland — and her laughing eyes, sense of humour and accent all confirm it — has lived in Australia for the past five years. She gained her Diploma in child care in 1979 and brings to Belford Oaks 13 years experience in the child care field. The position as Full Day Care Co-ordinator is Joy's first.

Joy says she's really looking forward to helping create and maintain a loving, happy and stable environment in which both children and parents feel secure.

She is very happy to answer queries so please don't hesitate to contact her.

Parents who have accepted a place for their child will soon be told of the child's exact starting date. Those who want to place their child's name on the waiting list should contact the centre on 859 7149.

Judging by the interest shown in the centre and the fact that almost all available places have now been filled, parents are advised to put their child's name on the waiting list to avoid possible disappointment later.

Belford Oaks, run by a committee of management, wouldn't exist if it hadn't been for the hard work, dedication and persistence of both past and present committee members. They deserve the community's support and thanks.

There are plenty of opportunities for those who feel they would like to help the committee or want to become a member of it.

It currently meets on the 4th Monday of each month at Strathalbyn Street Infant Welfare Centre at 8.00 p.m. and its president, Yvette Poznanski, would love to hear from you. You can ring her after hours on 898 6253.

Recreation Centre update

FOR those who are regulars along High Street, the earthworks at the new Recreation Centre site are no surprise.

They started before Christmas and are expected to finish soon.

The cement contractors will then move in and it won't be too long before you'll get a better picture of the facilities your new Recreation Centre will have to offer.

Tenders have been let for the ozone-based water treatment plant — the latest in swimming pool technology which does away with

the need for chlorine. You can throw away your goggles too.

The gymnasium and aerobics floors will go in next and the base for the two new public tennis courts. These outdoor courts, with a synthetic playing surface, will be the only public courts available for hire in Kew.

For those with a soft spot for the giant palm — it is being retained. And the whole outdoor area will be landscaped with picnic grounds and barbecue facilities.

We'll have more news for you soon.

All get equal hearing at MLC Kew living 1988



● Kew's Mayoress, Mrs Helen Tutt (left) with Mrs Helen Badcock and Principal of MLC, Mr David Loader.

A NEW book to raise funds supporting a special education program at Methodist Ladies' College, Kew, was launched late last year by Kew's Mayoress, Mrs Helen Tutt.

The book, *The Cookery Collection*, is being sold to raise funds for the school's program of equal opportunity for deaf girls in education.

It was produced by the school's Deaf Integration Support Group, made up of parents and staff involved with the 11 deaf girls who attended the school last year.

Without money raised by the support group the program would probably cease.

Mrs Tutt said the program is fantastic. "It ensures the profoundly deaf and hearing impaired students get equal opportunities in education with their hearing colleagues."

Each deaf student is supported

by a note-taker or sign language interpreter so her classroom access to language is equal to that of her colleagues.

"Its a two-way method of communication where both girls benefit. On the one hand, the deaf student is helped to improve her subject understanding. On the other, the assisting student gains an insight into the difficulties experienced by the profoundly deaf and hearing impaired."

Teacher of the deaf at the school, Mrs Helen Badcock, said the School's commitment to the program was significant. Both in the employment of specialised staff and in general support.

Of the 13 hearing impaired students enrolled at the school for this year, 10 are profoundly deaf, she said.

Copies of the book are on sale through M.L.C. on 819 2599.

IN 100 years when Australia is celebrating its tricentenary, Kew residents may wonder about Kew in 1988.

They may want to know what Kew families were like, where they lived, worked and played. What quality of life they had.

To answer these questions, Kew Bicentennial Committee plans to publish a photographic record called *Kew Living 1988*.

The book, a limited edition, will be available for sale later in the year, but organisers are taking advance orders now.

Vice-President of the Kew Historical Society and a member of the Kew Bicentennial Historical sub-committee, Sue Leong, said "Our aim is to publish a collector's item at a very affordable price."

"We know that other books like this have, in later years, become very valuable indeed. Not only for research purposes, but also as collectors items."

The idea for the book came from the Kew Conservation Study, commissioned by Kew Council, the results of which will be published in March.

"Researchers were hampered by a significant lack of early Kew photographs. These are normally an invaluable primary resource in studies like this."

"They are also a unique record for families to hand down, one generation to another."

Consultant, Pru Sanderson, who spearheaded the Kew Conservation Study, said she suggested the *Kew Living* project so that future researchers would not be disadvantaged by a lack of photographic data.

Pru, who is co-ordinating *Kew Living 1988*, plans to photograph six theoretical families, their homes, places of work and recreational interests. She will use as her background information, the latest census material on Kew.

To place your advance order or obtain more information, contact Sue Leong on 817 4660.

Immunisation reminder

A REMINDER that evening immunisation and adult rubella sessions will be held in Hall 3, library complex, Cotham Road, on February 16 from 6.30 to 7.30 p.m.

Children's daytime sessions will be held at North Kew Infant Welfare Centre, 152 Peel Street, on February 3 and March 2 from 9.00

to 10.30 a.m.

East Kew Infant Welfare Centre, 21 Strathalbyn Street, will have its sessions on February 17 and March 16 from 9.00 to 10.30 a.m.

Enquiries can be directed to your local maternal and child welfare sister or to the chief health surveyor on 862 2466.

Footy fever's on again

AFTER the warm weather of the last few weeks it's hard to imagine that Kew Football Club is gearing up for a challenging season in the B Grade Amateur competition.

After finishing runners-up last year, Coach, Brett Burden, is adamant that Kew will be the 1988 Premiers. Along with Athletics Fitness Advisor, John Smith, Brett has set-up a demanding training program with pre-season training on Mondays and Wednesdays at 6.00 p.m. at the Club's ground in Victoria Park.

Pre-season training commenced on February 1 and four practice matches have been arranged against Old Melburnians, Old Brightonians, Balaclava and a local Derby versus Balwyn.

Local youngsters Sam Bruno,

Andrew Price and Ashley Royston all settled into the club last season, while country boys Neil Duncan (Yarrowonga) and Nigel Griffiths (Queensland) made their mark too. Local and country recruits are always welcome to training.

Office bearers elected at the recent A.G.M. were E. Kelly (President), M. Bollman (Secretary), I. Job, D. Mullin, R. Wailes, J. Bradley, A. Peric, G. Toogood and R. Barry. The committee is particularly interested to hear from those who have a love of the game or an interest in football and who would like to serve on the committee.

Any enquiries can be directed to Michael Bollman on 818 6536 after hours, or 653 0481 during the day.



FROM Monday February 3, Kew Citizens Advice Bureau and its neighbouring bureau in Hawthorn, are back in operation after the Christmas break.

Both will be open from 10 a.m. to 3 p.m., Monday to Friday. The free legal service resumes 7.30 p.m. to 9 p.m. each Tuesday at Kew and each Wednesday at Hawthorn.

Among the services the Bureaux provide, is confidential consultation from a qualified social worker. Residents can get help with all sorts of family and personal problems free of charge.

As well, we can offer limited help which is outside the scope of other welfare organisations. This consists of emergency relief for people with immediate needs.

Sometimes we need you to help us. The Hawthorn bureau is looking for a volunteer typist to help maintain its information records. If you can spare about two hours each week, at a time to suit you, you can ring either bureau: 861 5244 for Kew or 819 2772 for Hawthorn.

Boroondara bushwalkers

BOROONDARA Bushwalking Club members are elated about the success of their newly-formed club.

Thelma McManis, the club's publicist, said that "Judging by the enthusiasm shown so far, the club is obviously meeting a need for healthy outdoor activities for more than 100 members."

She said the get-to-know-you barbecue and walk held at Cape Schanck in November was a great success and since then, members have enjoyed several day and overnight walks.

Thelma said that age and fitness are no barriers to participation in the club's activities. On one recent walk, 76 people whose ages ranged from five to 78, split into three groups according to ability. Everyone thoroughly enjoyed themselves.

An enthusiastic committee has prepared a comprehensive program of graded walks for 1988: easy; medium; and for the fit, hardy and experienced, difficult walks.

During February the club has planned an easy walk to Mount Honda/Dindi Hill/Wilhelmina Falls

— February 6 to 7; an easy/medium walk at No. 1 base camp in Wilson's Promontory National Park and a medium overnight walk at the same venue on the weekend of February 13 to 14.

From February 20 to 21, Fritz Schaumburg, founder and president of the club, will lead a difficult walk to Mount Feathertop.

Boroondara Bushwalkers meet on the second Wednesday of each month in Hall 3, Kew Library Complex, at 8.00 p.m.

If you would like to join the club or nominate for one of the walks, go along to their next meeting on February 10, or contact Thelma McManis on 817 5548.

The club is looking for people with experience who are prepared to lead walks, or those who want to be trained to do so. If you feel you have a skill to offer the club then why not share it with other enthusiastic members?

For those who would like to go on one of the overnight walks but don't feel they have enough knowledge of camping, a speaker at each monthly meeting lectures on some aspect of bushcraft.

Kew footy history

KEW Football Club is compiling a club history and already some interesting facts have emerged.

In 1929, Kew played East Brunswick at the MCG as a curtain-raiser to the Victoria v South Australia match.

If you have some interesting trivia, copies of articles, or photographs which would help the club with its project, please ring Michael Bollman, on 818 6536 or 653 0481.

All memorabilia will be treated respectfully and returned promptly.